

2025 Community Safety RFP

Tanya Kim, Human Services Department (HSD)

Erika Pablo, Human Services Department

Owen Kajfasz, Human Services Department

Dr. Lee Hunt, Seattle Police Department



City of Seattle

Agenda

1. One Seattle Restoration Framework
2. Community Safety Request for Proposal (RFP)
3. Questions



One Seattle Restoration Framework

Our Vision

The **One Seattle Restoration Framework** is a comprehensive approach to creating a safer Seattle. It sets the City's north star as safety for every person in every neighborhood and charts an actionable path to address the very real challenges we face through investments, innovations, partnerships, and new and expanded programs.



To achieve this vision, the City will focus on 6 key strategies

1

Reduce Gun Violence



2

Prevent and Reduce High-Impact Crime



3

Respond to 9-1-1 Calls Efficiently and Appropriately



4

Confront the Opioid Crisis with a Public Health and Safety Approach



5

Activate and Enhance Neighborhoods



6

Tackle the Root Causes and Impacts of Violence



Community Safety RFP: Background

Research

- Site visits with other cities
- Technical materials from DOJ, Johns Hopkins, etc.
- Technical advisors (e.g., Cities United)
- Community feedback

Infrastructure

- Expanded data and evaluation capabilities within HSD
- Developing a database to track participant referrals, services, and progress
- Committing to have an external evaluator

Coordination

- Partnering with SPS, DEEL, SPD for data and policy analysis
- Developing cohesive referral process for community, schools, SPD
- Implementing a provider network model to include all contracted agencies

Accountability

- Aligned to the One Seattle Restoration Framework
- Developing shared contract measures
- Implementing new workforce development standards and support



Community Safety RFP: What's New

Current

1. Portfolio includes disparate contracts from direct adds and 2019 RFP
2. No single coordinating network/referral process
3. Met emerging needs informed by evidence-based practices
4. Place-based interventions are in Central District, Southwest Seattle, and Southeast Seattle



2026

1. Consolidate community safety contracts under one model and shared outcomes
2. Coordinate and align key partners – DEEL, SPD, SPS, Provider Network (all contracted providers), etc.
3. Informed by evolving evidence-based practices and other successful models across the country
4. Committing to external evaluation
5. Expanding to North Seattle



2025 Community Safety RFP: Guidelines

HSD will invest in services across a continuum of prevention, intervention, and restoration strategies with the goal of further reducing gun violence.

- **Funding Available:** Up to \$14.7 million
- **Priority & Focus Population:** Youth and adults (ages 10-35) and their families impacted by and/or involved in gun violence in Seattle, and those of Black/African American/African Descent
- **Place-based Service Areas:**
 - North Seattle
 - Southwest Seattle
 - Central District
 - Southeast Seattle



2025 Community Safety RFP: Guidelines

Lasting community safety cannot be achieved through a single approach, therefore, this RFP will invest in a service model comprised of the following three strategies:

Strategic Investment Areas

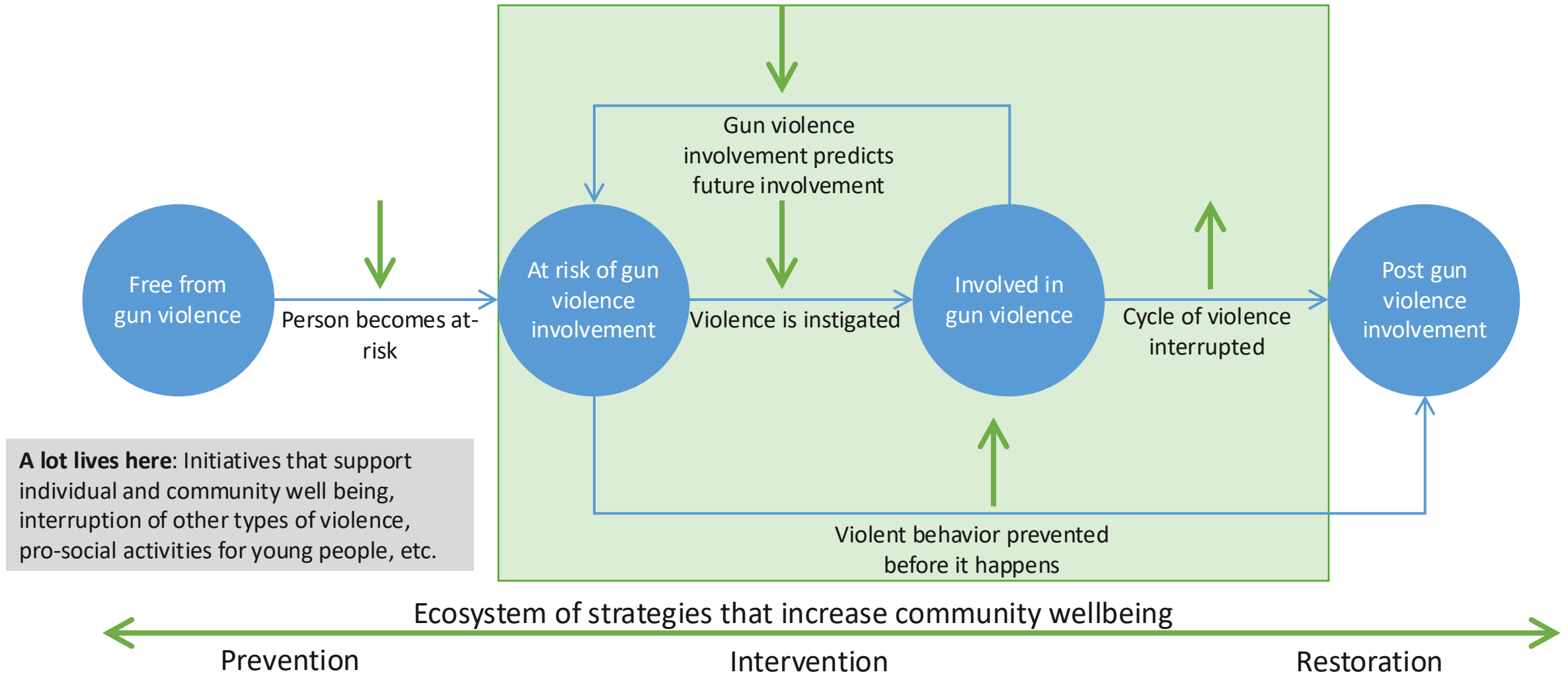
1. Intervention Services
2. School Safety Services
3. Supportive Services

Outcomes

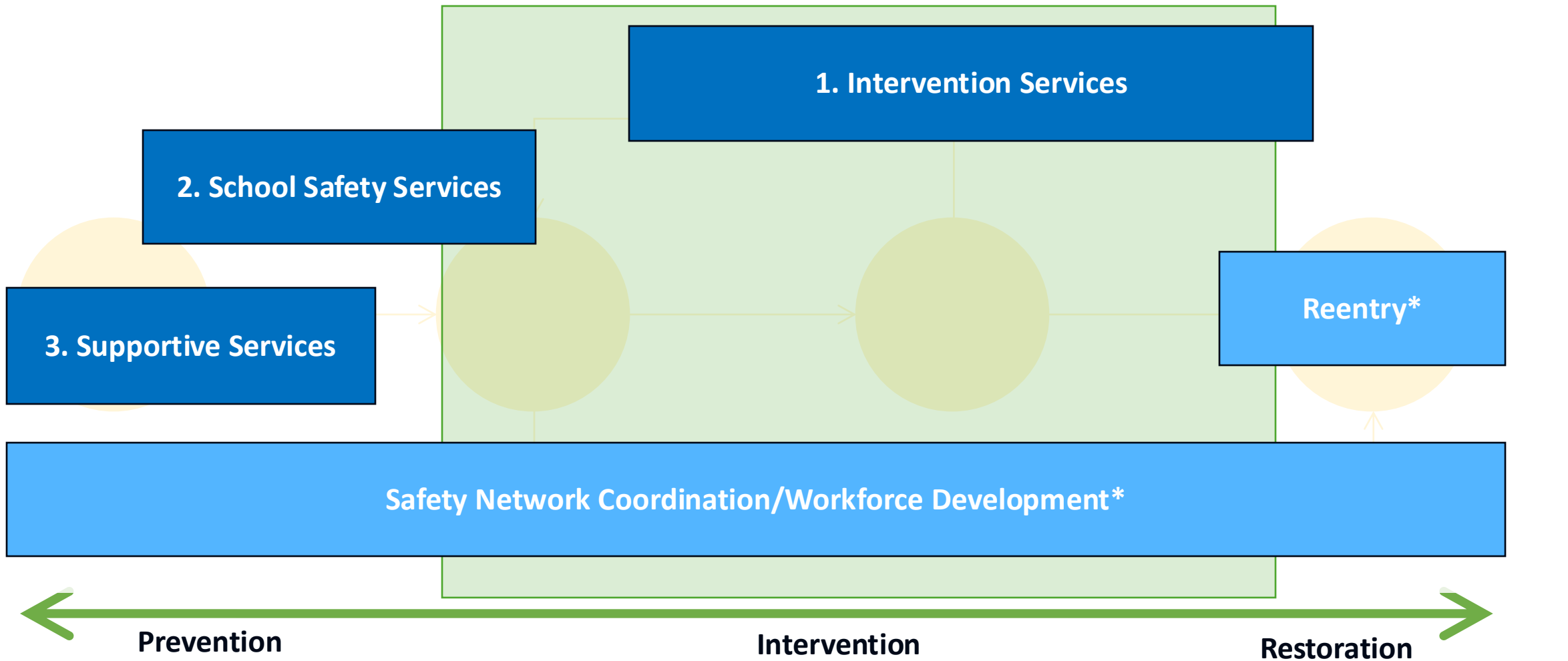
- Decreased involvement in gun violence
- Increased sense of safety
- Increased sense of wellbeing
- Students are safer at school



Community Safety Model



Community Safety RFP Strategies



*separate process

1. Intervention Services

- Hospital-based intervention
- Intensive individual services
- Place-based interventions

John lives in Southeast Seattle. John's close friend is shot outside his home and transported to Harborview Medical Center in serious condition. At the hospital, John expresses a strong desire for revenge, setting off a series of interventions.

John is immediately connected with a conflict resolution team in Southeast Seattle, to help him work through his anger. John's case manager provides ongoing mental health support as he continues to process the shooting. Assistance with food, housing and other basic needs continue so John can maintain stability in his life at home and school.



2. School Safety Services

- Onsite safety teams
- Safe passages
- Case management
- Family resource fund

Paige attends one of the 11 schools that partner with the City on **School Safety**.

At school, a safety specialist helps mediate a spiraling conflict between Paige and another student. That worker also gets Paige extra food to take home over the weekend and connects her to after-school activities. A teacher tells Paige about the safe passages program, and she and a friend check in with the safety specialists and other students from the neighborhood.

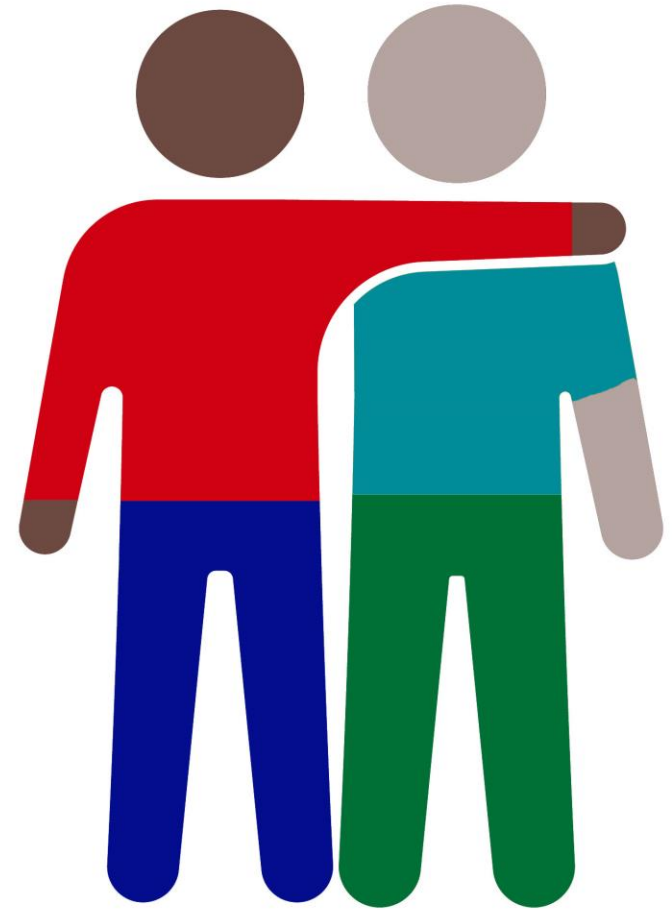


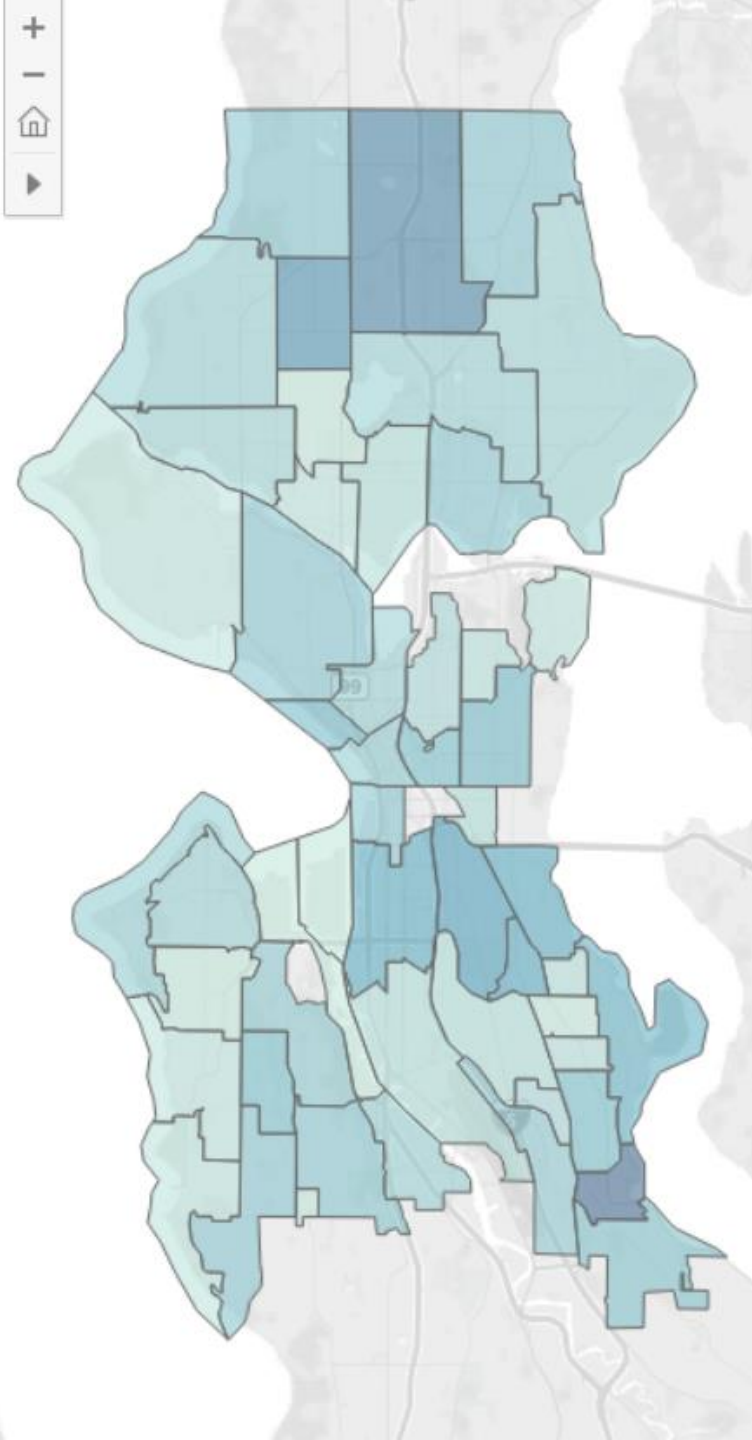
3. Supportive Services

- Mentorship/coaching
- Peer support
- Legal aid
- Therapy
- Resource navigation
- Food/rent assistance

Jamie is a young adult who lives in a neighborhood impacted by gun violence. He doesn't have a weapon, but some of his peers do, and he has considered obtaining a gun for protection. Jamie has a close relative who survived a shooting and is struggling.

Supportive Services will help Jamie maintain a sense of stability and avoid becoming involved in gun violence.

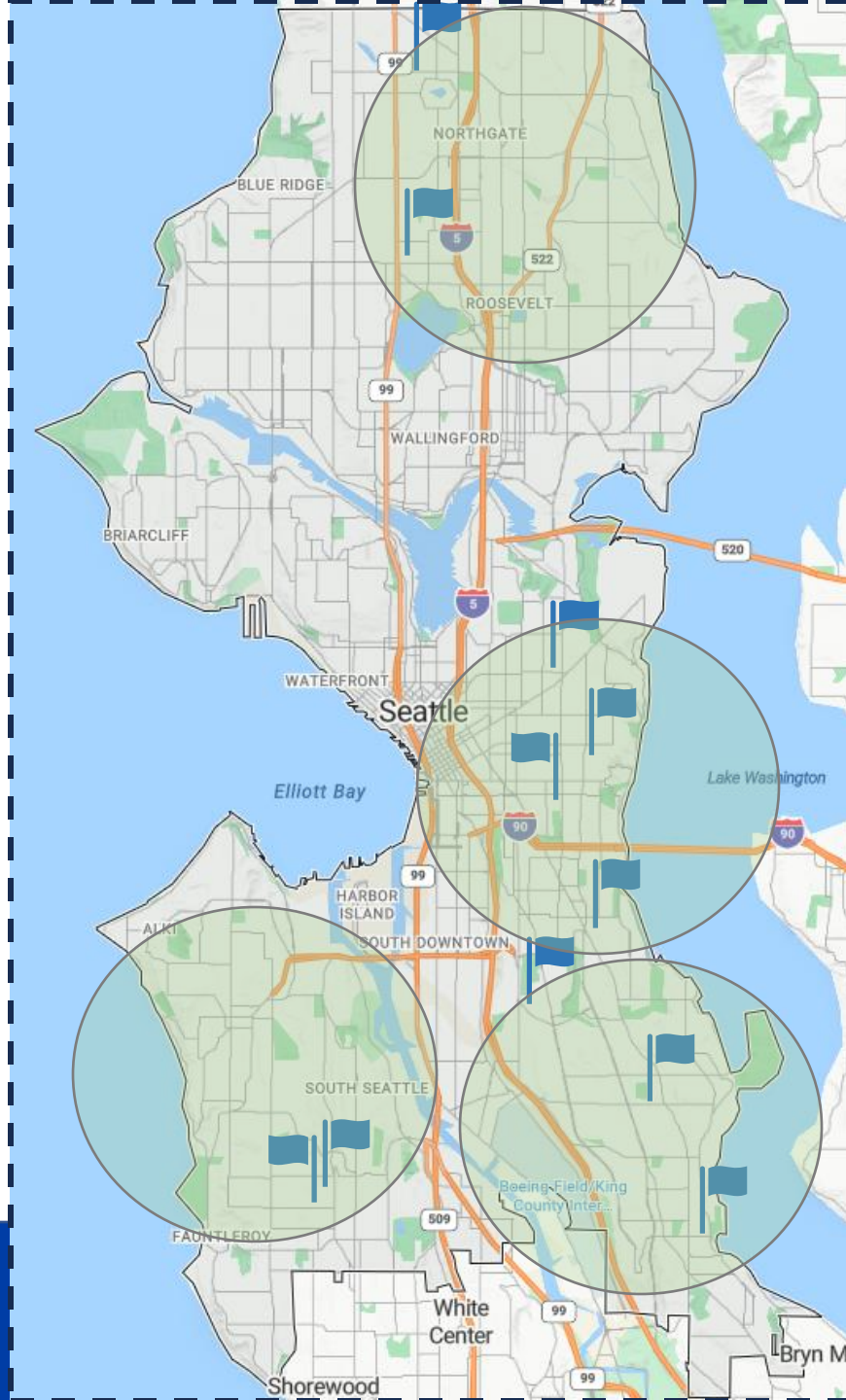




Shootings & Shots Fired in 2025*

- 456 occurrences this year, down 17% from this time last year
- Shots fired are not uniformly distributed
- Highest counts in
 - Rainier Beach and Northgate/Aurora areas followed by Delridge/Southwest Seattle

The Distribution of Community Safety Services Across Seattle



1. Intervention Services

- Hospital-based intervention
- Intensive individual services
- Place-based services

2. School Safety Services

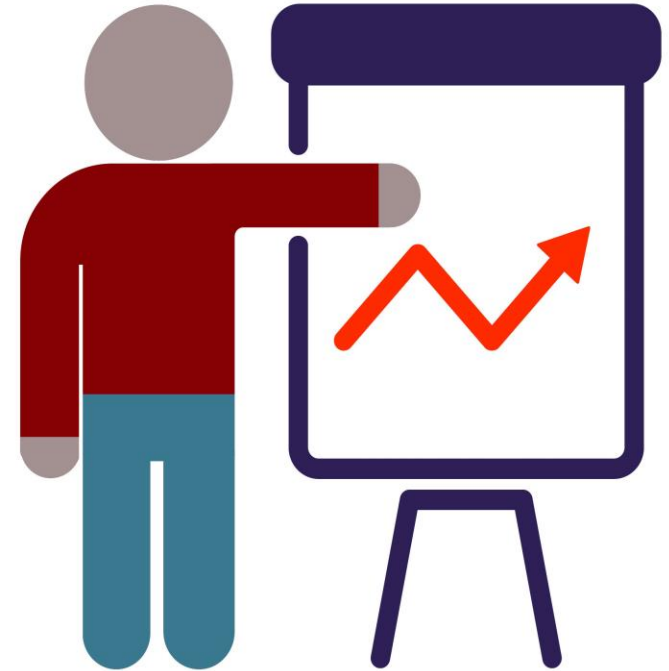
3. Supportive Services

Safety Network Coordination & Workplace Development

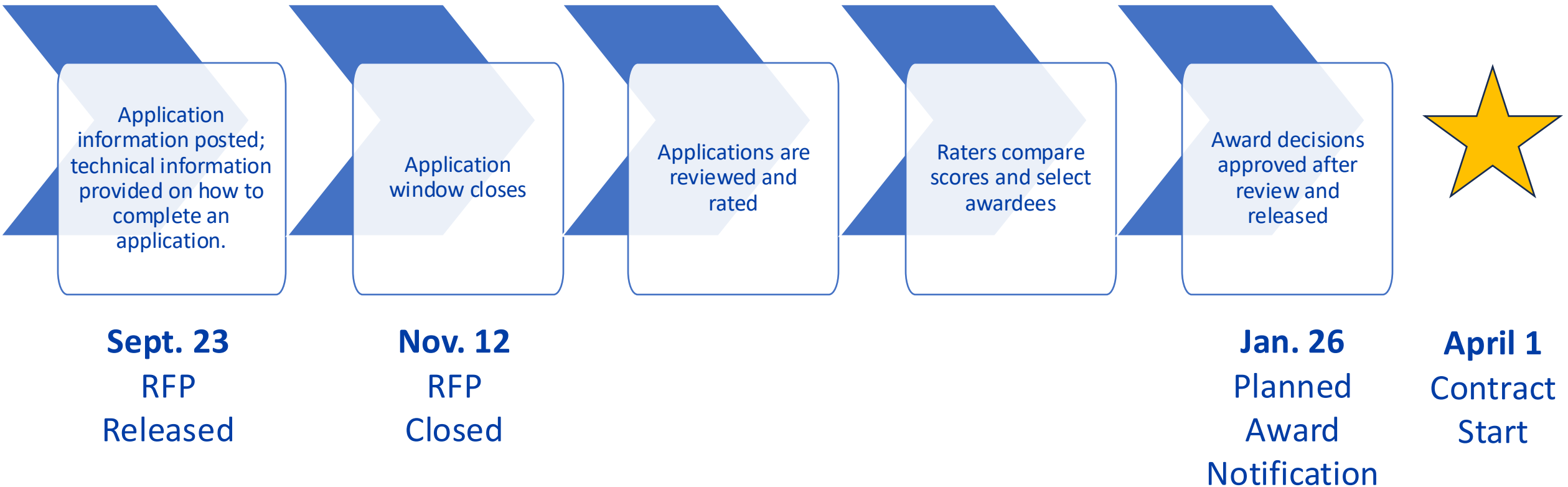
- Training certification
- Information-sharing
- Referral support
- Technical assistance
- Skills development

Through **Safety Network Coordination & Workforce Development**, those working to keep Seattle safe have training/certification, information-sharing and referral support, and technical assistance to professionalize the workforce and build up skills.

This holistic approach also means that each mentor working with John, Paige, and Jamie know what resources their families have accessed and what further supports are available through other funded agencies.



RFP Process & Timeline*



**HSD reserves the right to change any dates in the 2025 Community Safety RFP timeline*



Questions