

# Commercial E-Cargo Bike Legislation and Program

Council Transportation Committee

September 2, 2025



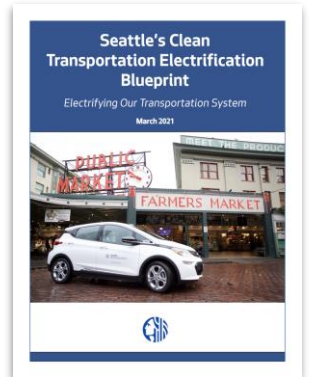
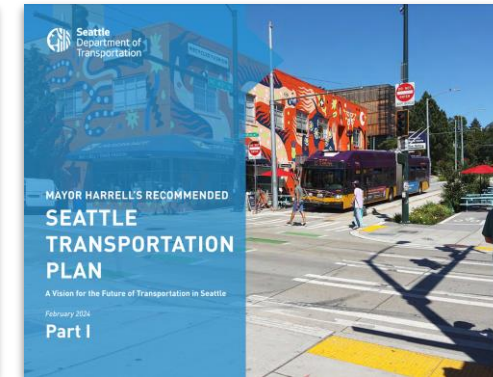
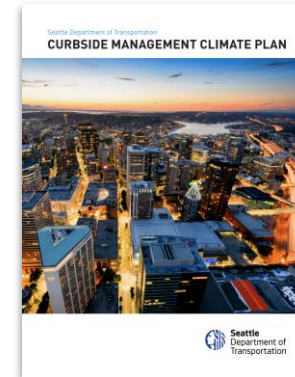
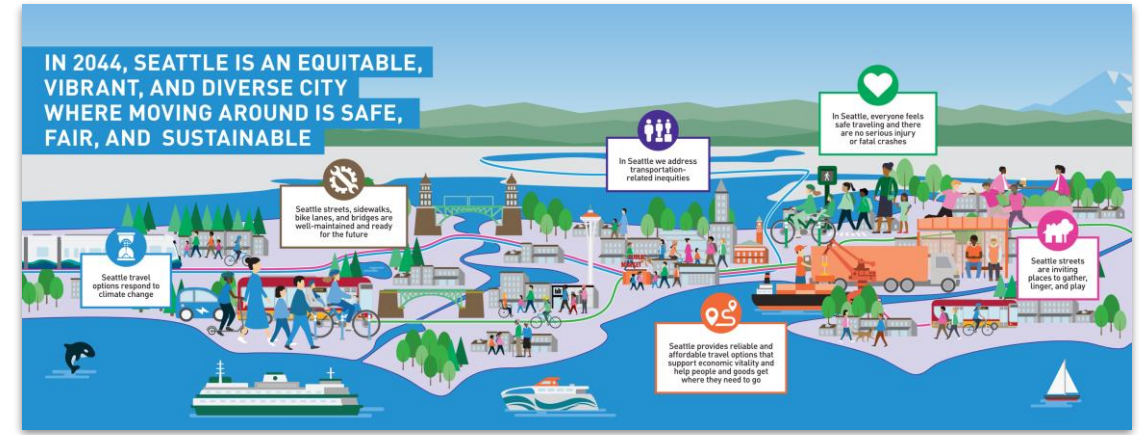
# Presentation Outline

- Connection to citywide goals
- Draft legislation and permit overview
- Partnership opportunities
- Next steps



# Establishing Commercial E-Cargo Bike program supports achieving zero-emission delivery targets + advancing City climate agenda - aligns with

- Priorities in 2022 and 2025 Climate Executive Orders
- SDOT Climate Change Response Framework strategy and tool in Low Pollution Neighborhoods



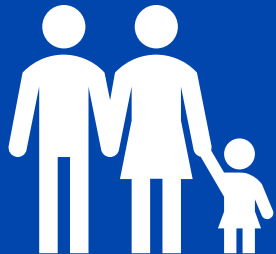
THE TRANSPORTATION  
ELECTRIFICATION BLUEPRINT  
**30%** zero-emission  
delivery by 2030

# Why E-Cargo Bikes?



Decrease emissions and enable growth of zero emission freight modes

Decrease congestion from commercial vehicle circling and traffic



Create safer streets and support our Vision Zero goals

Opportunity to build partnerships with Seattle business community





# What will this program address?



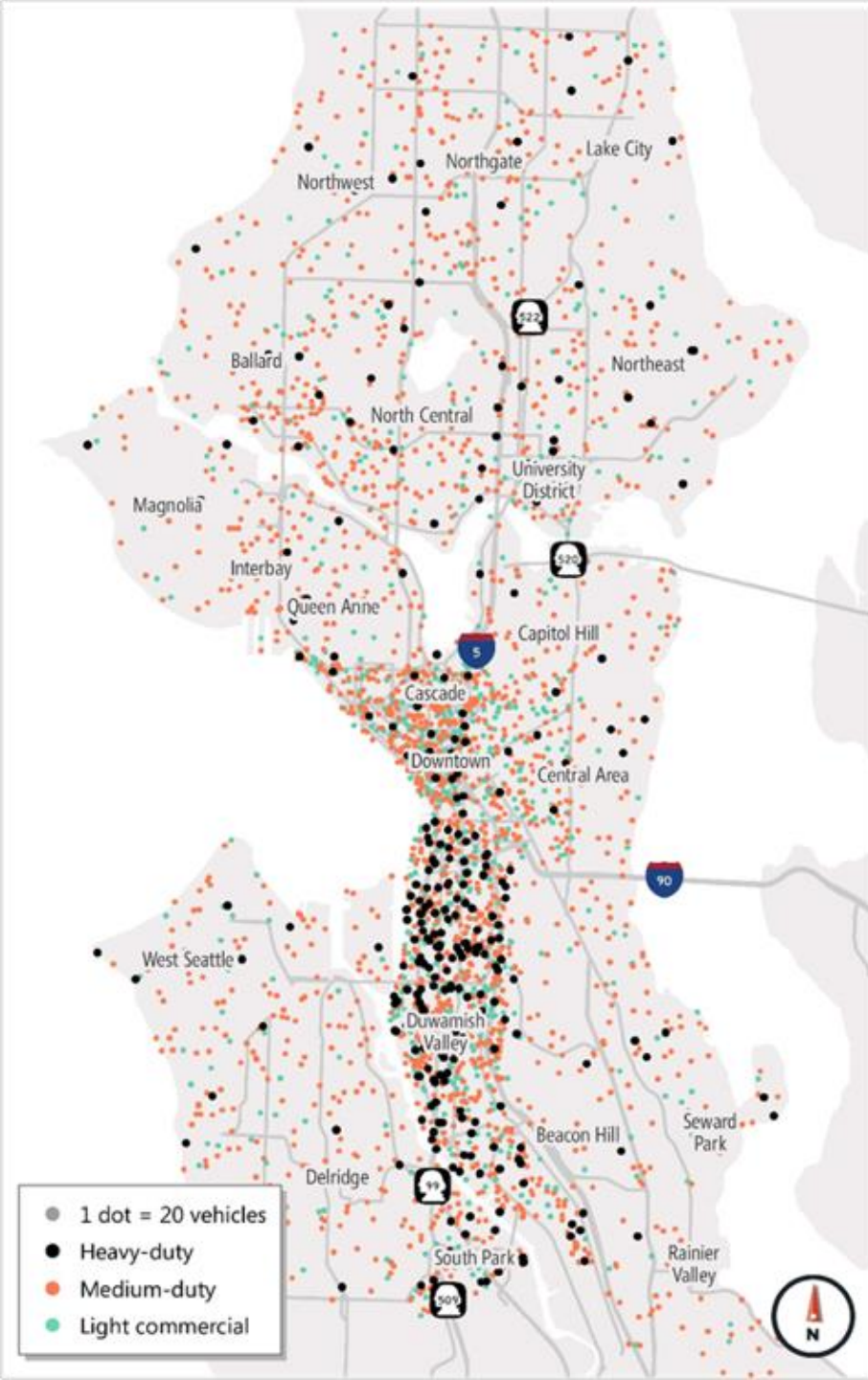
- Delivery activity continues to grow in Seattle
- Businesses and freight partners are interested in using e-cargo bikes



- E-cargo bikes offer efficiency and cost benefits for operating businesses
- Potential to improve curb management experience



- Provides legal framework to guide and encourage interested delivery operators



## PROPOSED LEGISLATION

# E-Cargo Bike Program - Key Elements

SDOT's proposed legislation takes three actions to help catalyze the City's commercial e-cargo bike ecosystem



Establish a legal  
**vehicle definition**



Open up **curbside  
access**



Create a formal  
**permit structure**

# Establishing e-cargo bike form factors

Legislation will set a definition for e-cargo bikes while keeping things flexible for continued vehicle innovation

Vehicle definition informed by peer city collaboration among New York City, Washington D.C., and Boston

## PROPOSED VEHICLE DEFINITION



### Format & Dimensions

- Two, three, or four wheels
- MAX bike width: 48" (no max length)

### Powertrain

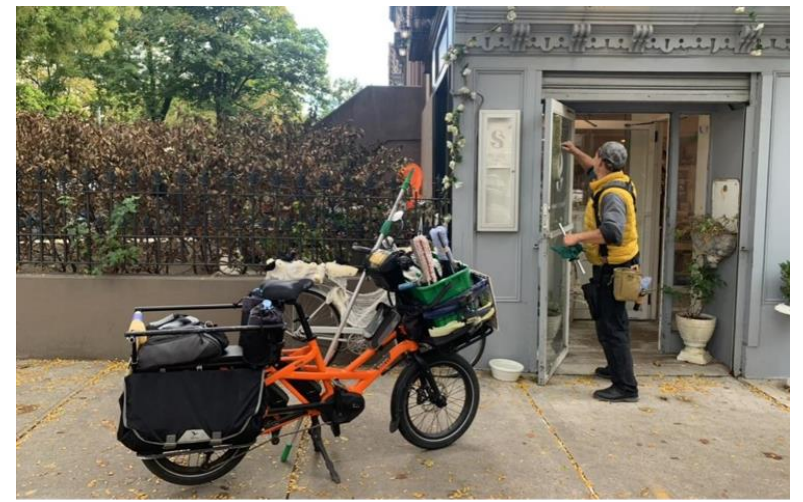
- Operable pedals
- Electric assistance or electric drive
- MAX power output: 750 watts

### Operating Parameters

- Can operate in roadway or bike lane
- MAX speed: 15 MPH



# Examples





# Expanding curb access for e-cargo bikes

Quick access to the curb is essential for keeping e-cargo bikes moving while avoiding conflicts with other road users

Permitted e-cargo bikes would be able to park and load along curbspace in business/residential areas

PROPOSED CURB ZONE  
ACCESS



**With a valid permit, Commercial E-cargo Bikes can load without additional cost in:**

- Time limit signs and most load zones
- Paid parking areas
- Restricted Parking Zones (RPZs)
- Unrestricted parking areas

# Streamlined permit program

Permits available through SDOT's Traffic Permit Counter

Permitted businesses will be required to provide quarterly data:

- Packages delivered
- Vehicle Miles Traveled
- Zip code specific operation areas served by e-cargo bikes

## PROPOSED PERMIT QUALIFICATIONS



### Permittees must:

- Have valid Seattle business license
- Place permit plate on back of bike/trailer displaying unique permit #
- Pay fee of \$100/bike starting after 6 months

### Permit will provide SDOT:

- Data from participating companies
- Coverage of some administrative program costs



## OPPORTUNITIES

### Stakeholders are ready to work with SDOT and move forward with e-cargo bike programming

- Working with SDOT Safety Team to develop e-cargo bike program for incident response
- Ready to uplift local ambassadors and early adopters such as:
  - Large freight partners
  - Small logistic businesses
- Reducing adoption barriers for small and medium-sized businesses - SDOT exploring e-cargo bike lending library concepts



# What's Next?

Timeline	Task
Now	Transportation Committee review and adoption of <a href="#">Commercial E-cargo Bike Legislation</a>
Now-October	Accela permitting development
Fall 2025	Outreach and engagement with partners to confirm participating businesses
Q4 2025	Launch program (pending legislation)





# Thank you!



**Seattle**  
Department of  
Transportation



# Questions?

Katherine Rice, Electric Vehicle Charging Senior Planner,  
Levy Electrification Program



[katherine.rice@seattle.gov](mailto:katherine.rice@seattle.gov)



206.256.5495





2022 - 2025

# Path of Program Development

Two Zero Emission Freight grants from C40 Cities supported program design and launch campaign creation.

Peer city and freight operator interviews conducted to learn where pilots have been successful and incorporate learnings.

Outreach conducted to local Seattle business community to gain support and inform program design.

**Pedal your business forward**  
E-cargo bikes can help Seattle businesses:

- Boost your brand
- Cut through congestion
- Reduce delivery costs

Electric cargo bikes are sustainable vehicles that can replace cars, vans, and trucks for goods movement

**Key Features**

- Advertising space to showcase your brand
- Travel in the bike lane
- Hold up to 1,000 lbs of cargo
- Charge using a standard wall outlet
- Pedal with electric assist or throttle
- Zero tailpipe emissions

Add custom branding & vehicle wraps to your e-cargo bike

Seattle Department of Transportation

With many models to choose from, e-cargo bikes are a great solution for businesses of all types

Small Capacity Medium Capacity High Capacity

**The Seattle Department of Transportation is launching a program to promote e-cargo bikes**

**Here's Why**  
Seattle has set ambitious goals to reduce transportation emissions and make streets safer

- 30% City goal for share of zero-emissions delivery by 2030
- 70% 1/3 of Seattle's medium-duty delivery trips that are 10 miles or less

STAY TUNED!

Reach out to learn more!  
katherine.rice@seattle.gov  
Katherine Rice, SOCT Carshare Management Division

Seattle Department of Transportation

