

SR520/I-5 connection and SR 520 Portage Bay Bridge and Roanoke Lid Projects update

Seattle City Council
Transportation and SPU Committee

June 20, 2023

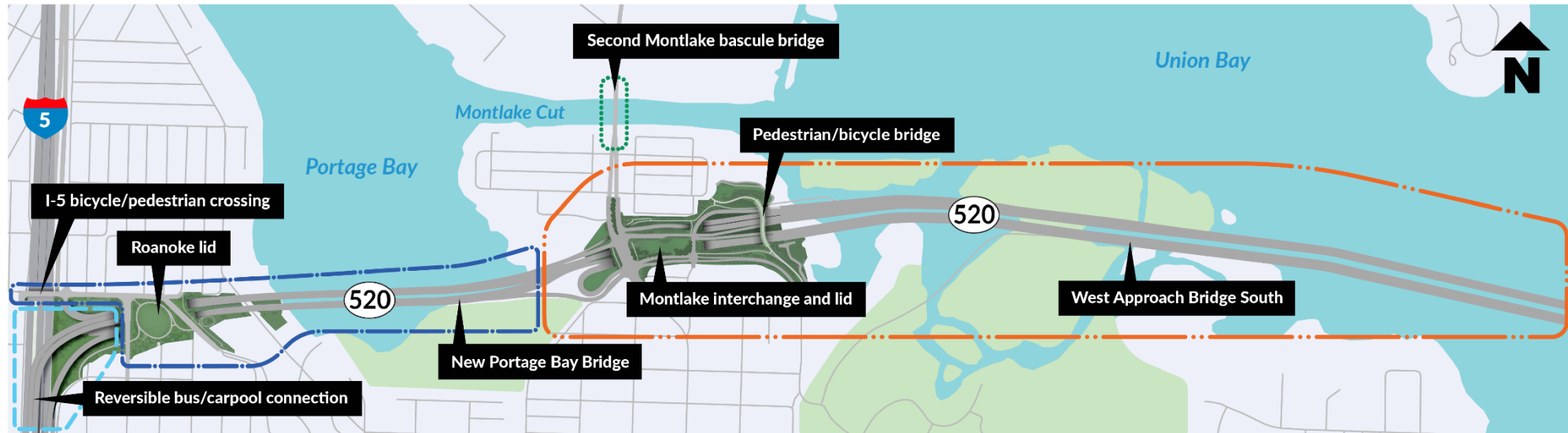
Dawn Yankauskas, P.E.
Deputy Program Administrator,
SR 520 Program & AWV Program

Ganth Lingam, P.E., PMP
Manager, Interagency Programs
Seattle Department of Transportation

Layne Cubell
Deputy Division Director/Operations
Real Estate Services Division
Finance and Administrative Services

David Graves
Strategic Advisor
Seattle Parks and Recreation

SR 520: Rest of the West project overview

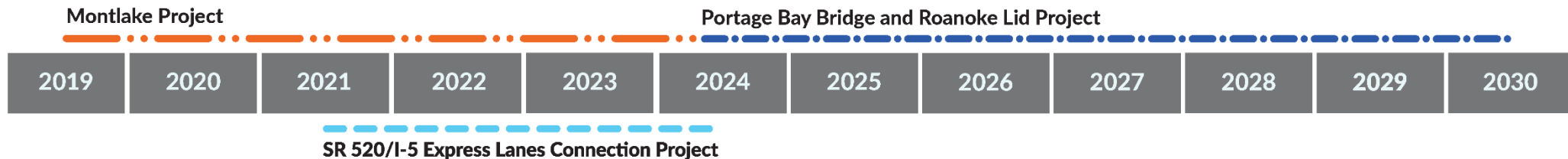


SR 520/I-5 Express Lanes Connection Project
 Construction started: 2021
 Estimated duration: 3 years

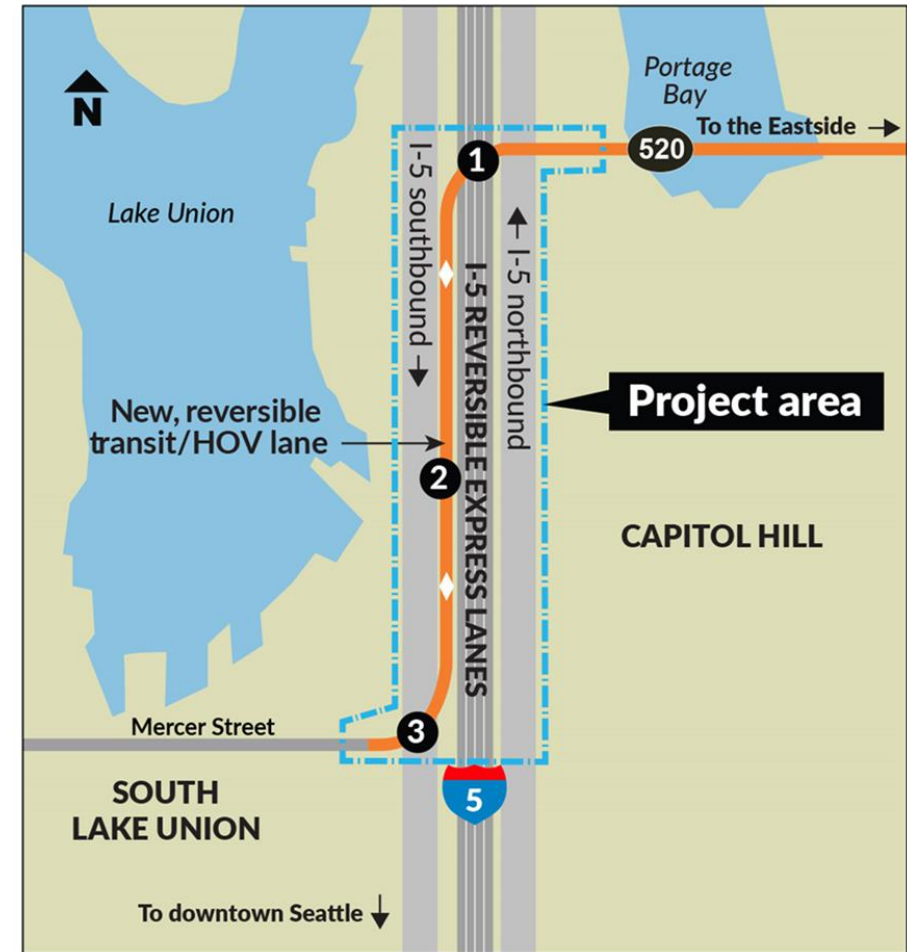
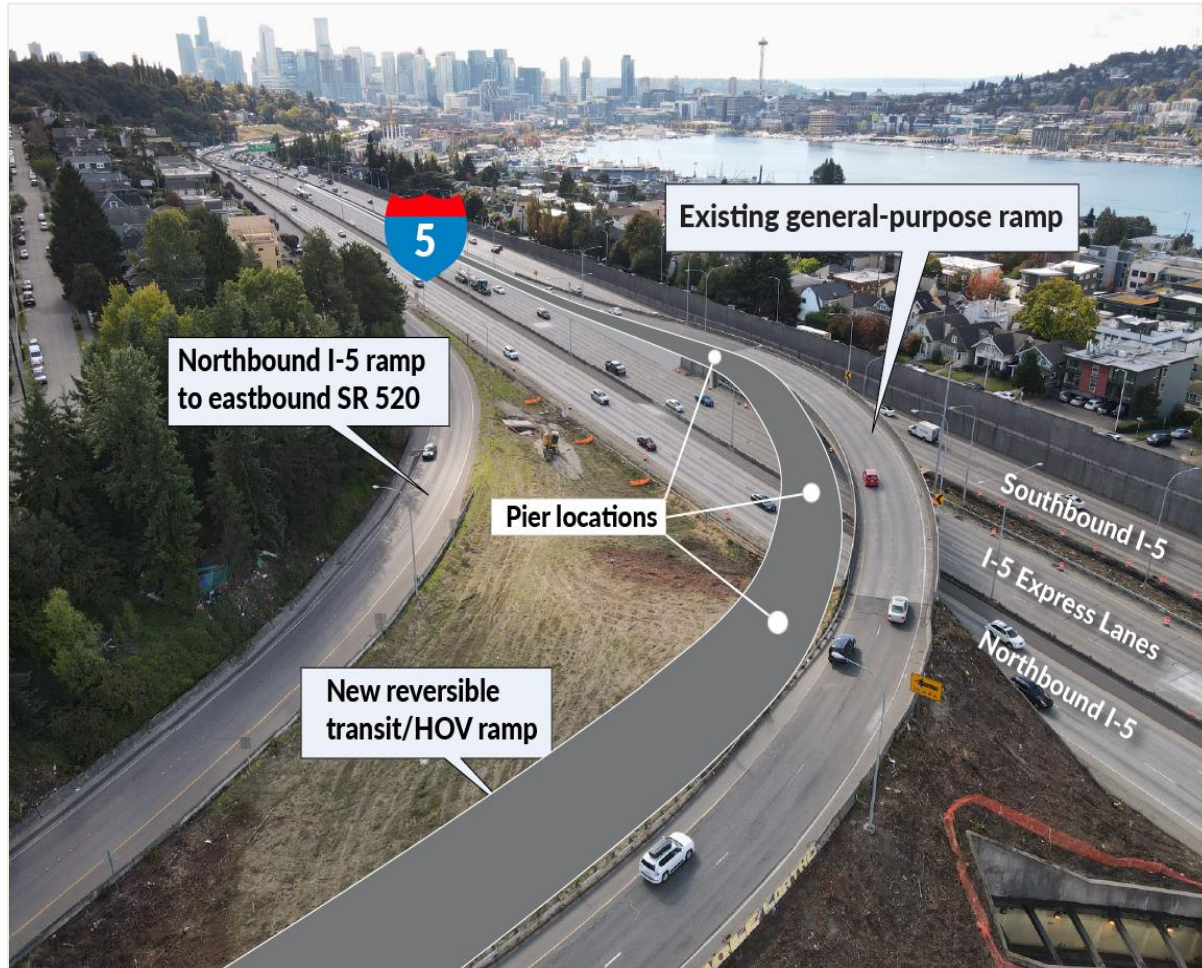
Portage Bay Bridge and Roanoke Lid Project
 Construction estimated start: 2024
 Estimated duration: 6 years

Montlake Cut Bascule Bridge Project
 Unfunded

Montlake Project
 Construction started: 2019
 Estimated duration: 5 years



SR 520/I-5 Express Lanes Connection Project



Roanoke ramp and wall work



Key elements of Fire Station 22 easement (CB 120596)

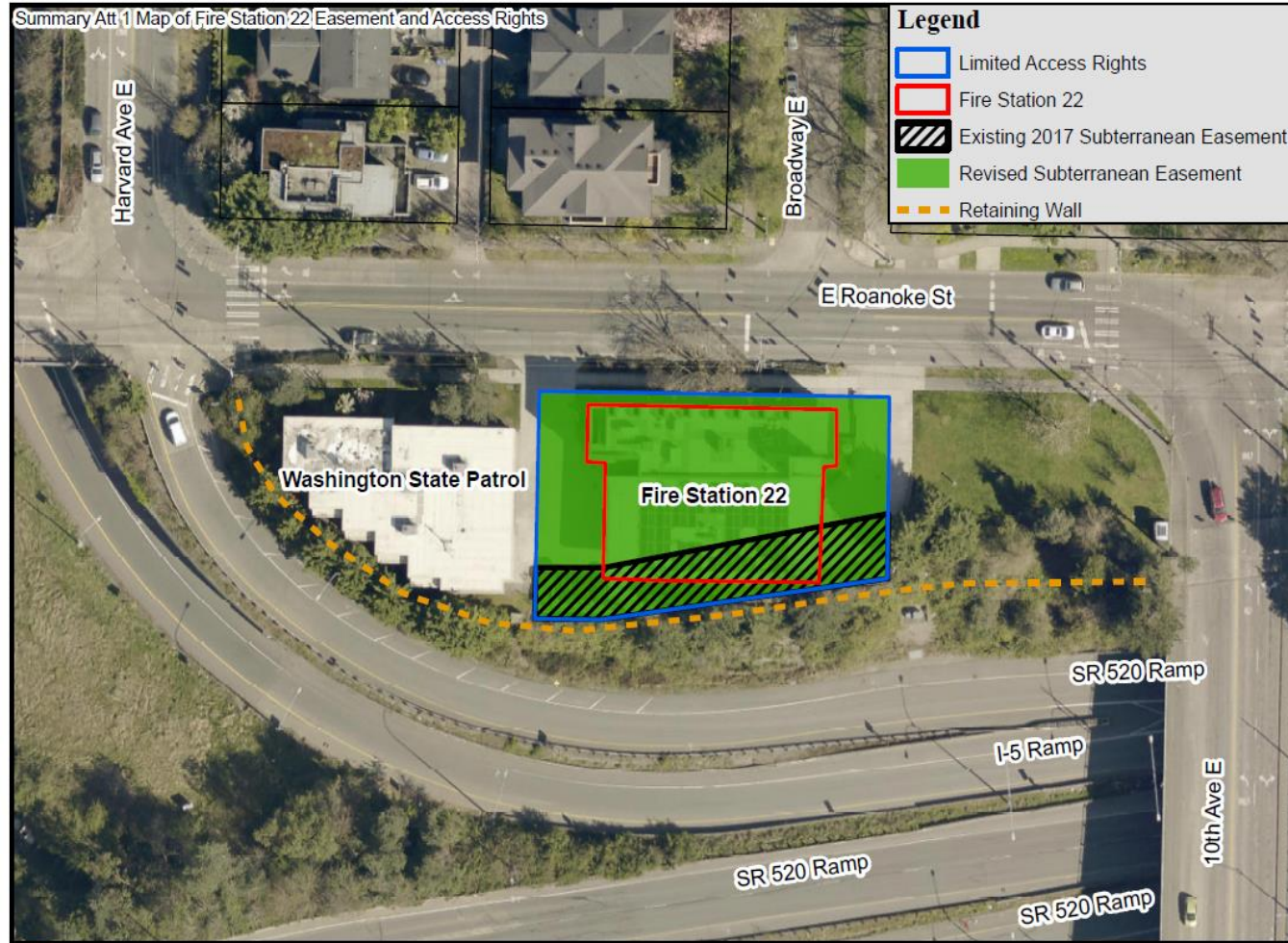
- FAS maintains Fire Station 22 on East Roanoke Street for SFD, opened in 2018 and operates 24/7.
- In 2017, FAS provided WSDOT a partial subterranean easement for retaining wall tiebacks on a portion of the fire station site.
- Finalization of design work in 2022 by WSDOT prompted request for new expanded subterranean easement under full site & replaces 2017 partial subterranean easement.
- The easement also allows for temporary construction access.

Key elements of Fire Station 22 easement

- Legislation package includes 2 documents:
 1. Easement – permanent subterranean under full site for retaining wall tiebacks and temporary construction access and shoring.
 2. Quitclaim Deed – for limited access rights to SR 520 highway, part of WSDOT's 2017 Limited Access Plan for the SR 520 Corridor.
- City/FAS will receive \$111,080 from WSDOT as the mutually agreed upon value for the Easement and Quitclaim Deed.

Map of Fire Station 22

Easement and Access Rights



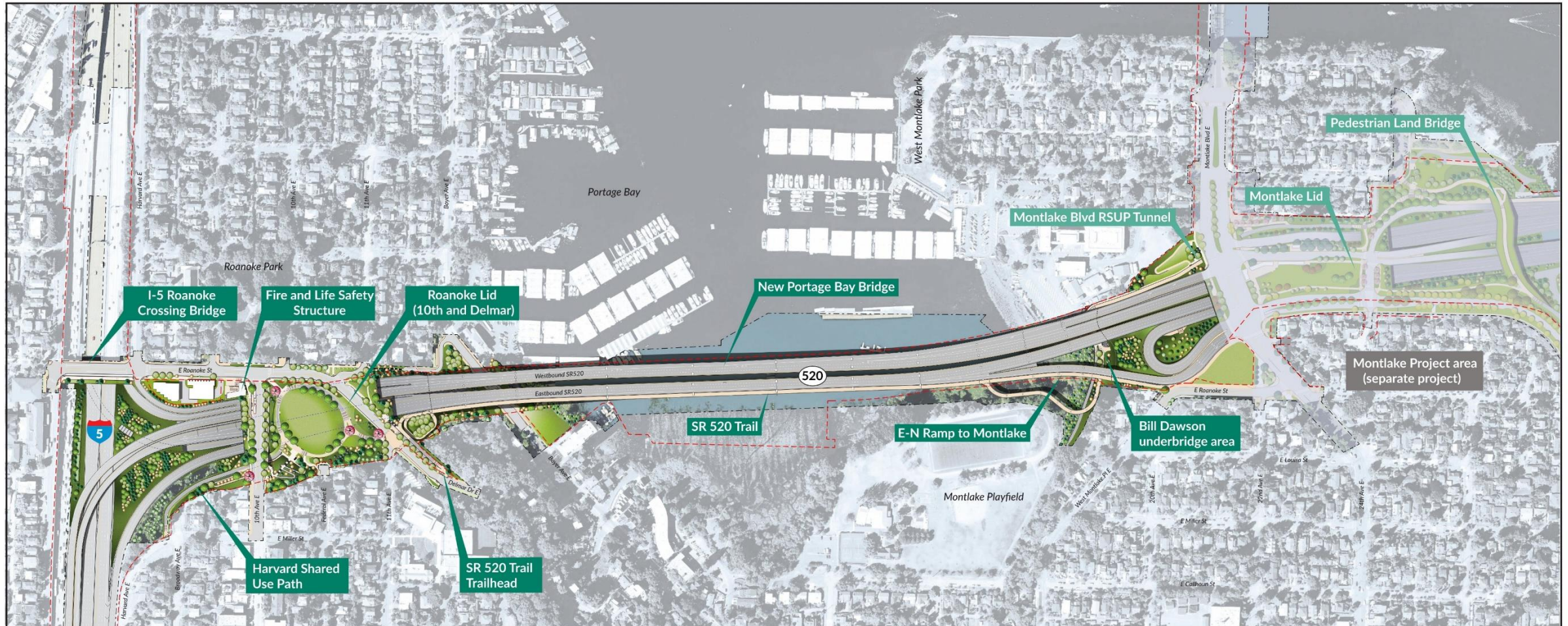
Produced by FAS - Real Estate Services Division, April 2023. Map is sourced from City's 2021 Orthophoto.

0 37.5 75 150 Feet



Portage Bay Bridge & Roanoke Lid Project

Major project elements



Note: concepts and materials shown are draft ideas for discussion purposes only, and are subject to change.

Portage Bay Bridge & Roanoke Lid Project: Design coordination



Rendering of future SR 520 bridge stretching across Portage Bay



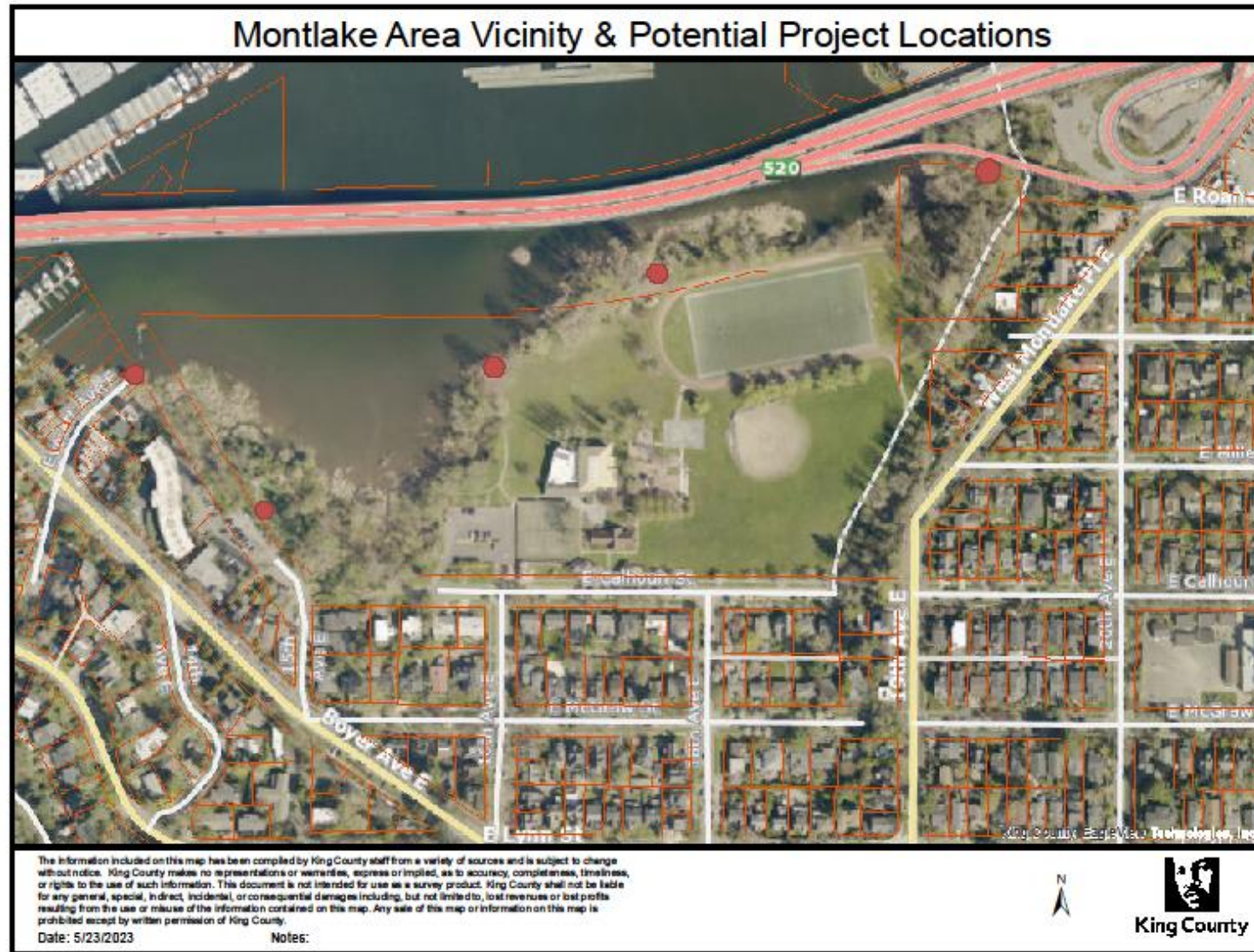
Rendering of future Roanoke Lid, looking southeast

Key elements of Shoreline Substantial Development Permit Recreation Mitigation Fund (CB 120598)

Potential Improvements to be funded with the Mitigation Payment from WSDOT:

- Park improvements at the Everett Avenue East Shoreline Street End,
- Improvements to the shoreline nature trail from the Montlake Playfield boat launch to the Bill Dawson Trail,
- Widen and harden the 15th Avenue East trail and nearby meadow loop trail,
- Improvement of Montlake Playfield kayak launch,
- Improved link to Portage Bay shoreline with upland areas and nearby neighborhoods,
- Trail connection from Montlake Playfield to West Montlake Park

Location of potential recreation improvements



Questions?



Conceptual rendering of outlook at Federal Ave, looking north