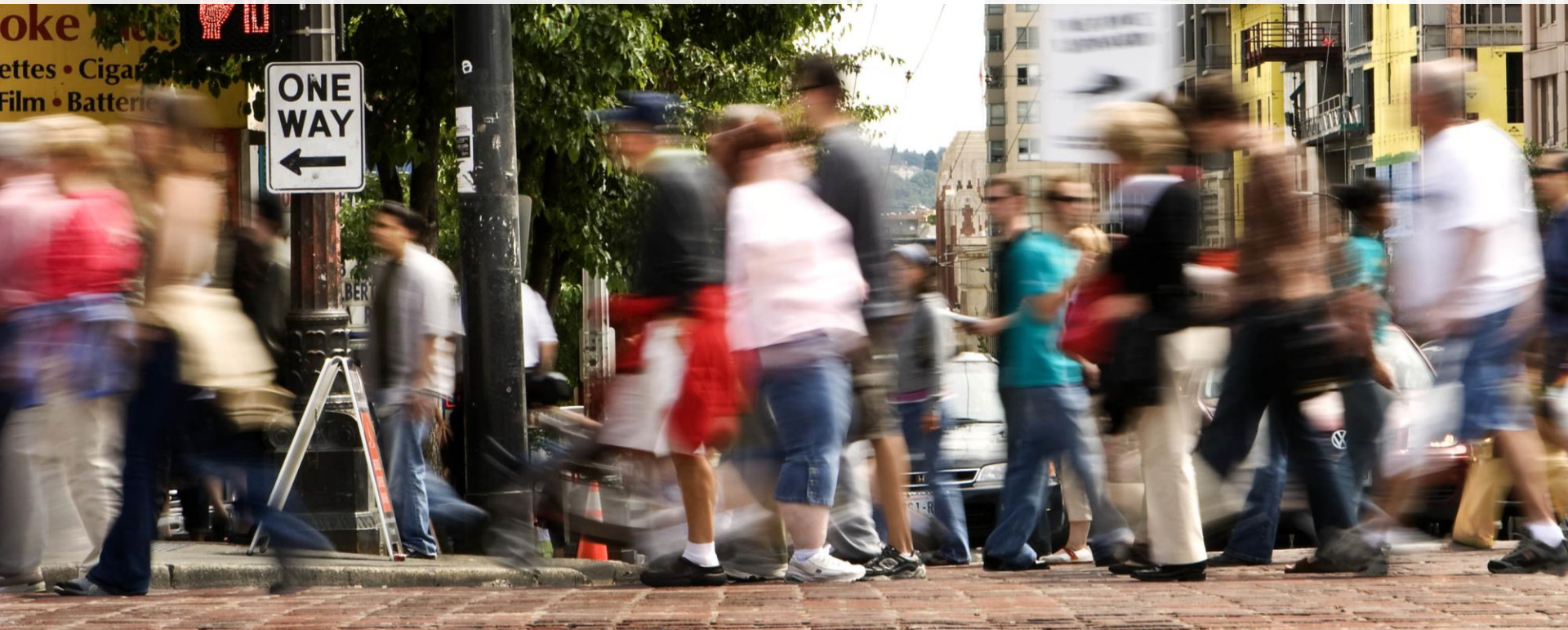


# FIRST HILL STREETCAR EYEBOLT EASEMENTS ACCEPTANCE ORDINANCE



Council Transportation Meeting

Larry Huggins

February 24, 2015

# SDOT's mission & vision

Mission: delivering a first-rate transportation system for Seattle.



Vision: a vibrant Seattle with connected people, places, and products.

# SDOT's core principles

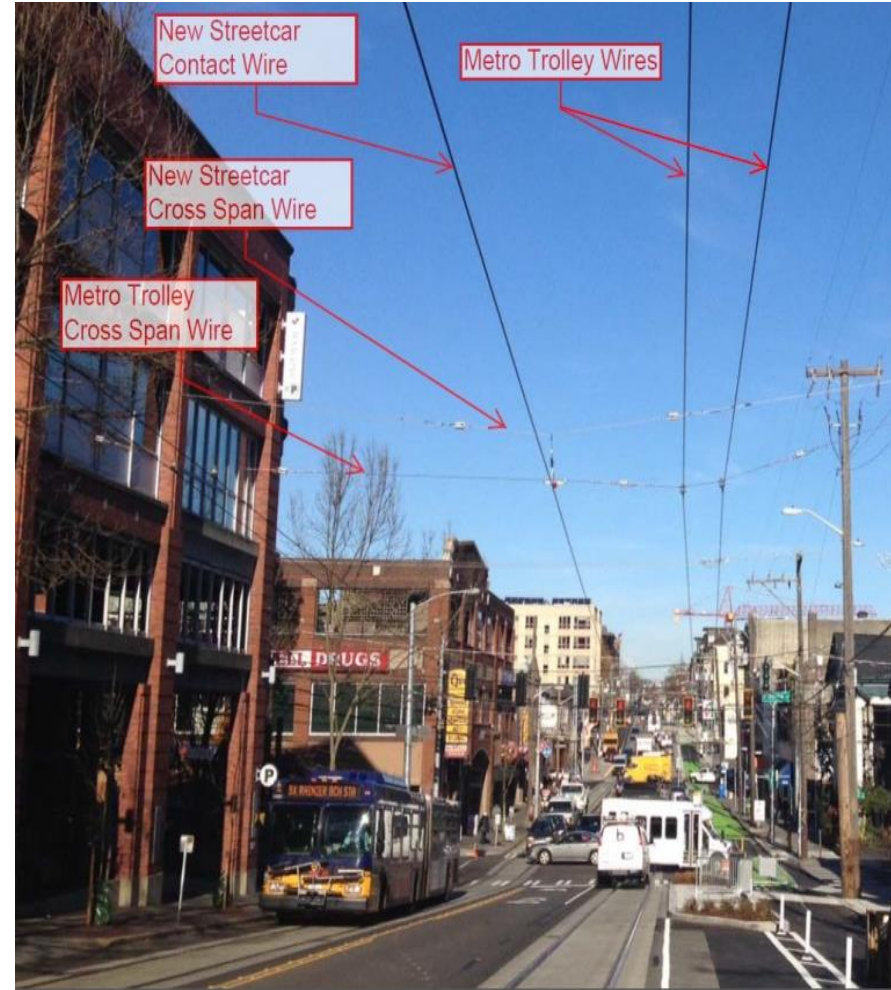


# Presentation overview

- Background
- Project area
- Existing conditions

# Background

- The City is building a modern low-floor streetcar network to support King County Metro Transit and Sound Transit's Regional Link Light Rail system.
- The First Hill Streetcar Project provides for a modern streetcar line approximately 2.5 miles long that will operate primarily along Broadway, Yesler Way, and South Jackson Street.
- This modern streetcar line linking First Hill employment Centers with Sound Transit's Regional Link Light Rail system by connecting Capital Hill, First Hill, and the International District neighborhoods.

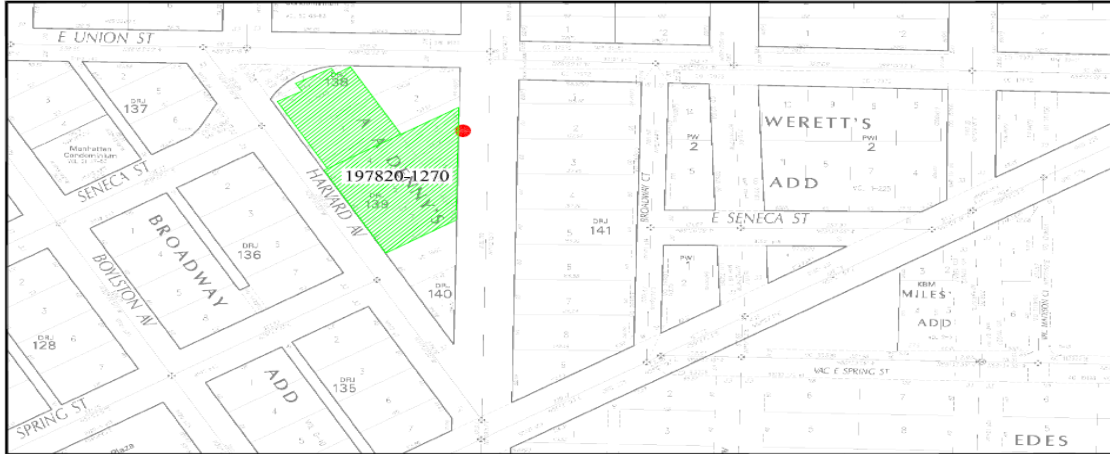


# Background

- The First Hill Streetcar Eyebolt Easements Acceptance Ordinance authorizes the City to acquire permanent easements for the installation and maintenance of 11 eyebolts affixed to various buildings or structures.
- The project was designed to minimize the installation of new overhead facilities, maximizing the “joint use” of existing steel poles that support traffic signals and the electric trolley system.

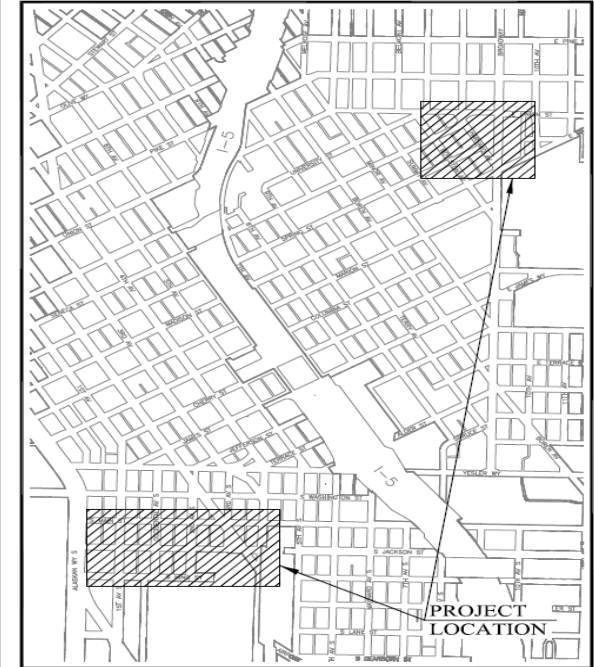


# Project area



**LEGEND:**

- EXISTING BUILDING
- PERMANENT EASEMENT



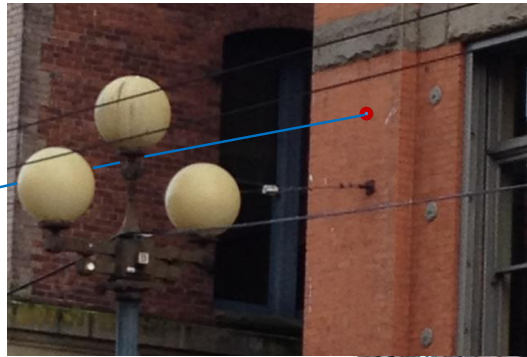
VICINITY MAP  
SCALE: 1" = 1,000'



**FIRST HILL STREETCAR  
PERMANENT EASEMENTS**  
SCALE: 1" = 150'

# Existing conditions

## New Streetcar Eyebolt (Washington Shoe Building)



New eyebolt and Streetcar wire



New eyebolt and Streetcar wire



# Questions?

Larry.huggins@seattle.gov | (206) 684-5001

<http://www.seattle.gov/transportation/bike.htm>

<http://www.seattle.gov/transportation>

