

# Briefing on Seattle Parks and Recreation's Role in Urban Forestry

City Council Parks, Public Utilities and Technology Committee

June 12, 2024

Seattle Parks and Recreation



City of Seattle

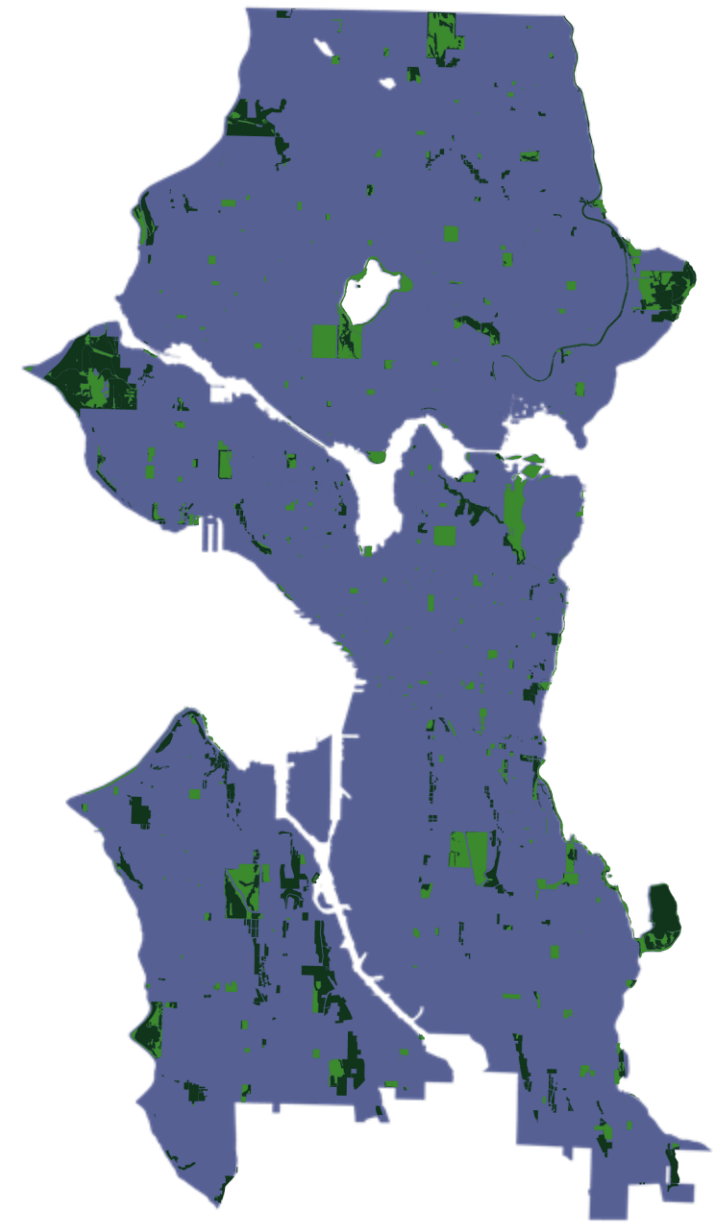
# Briefing Agenda



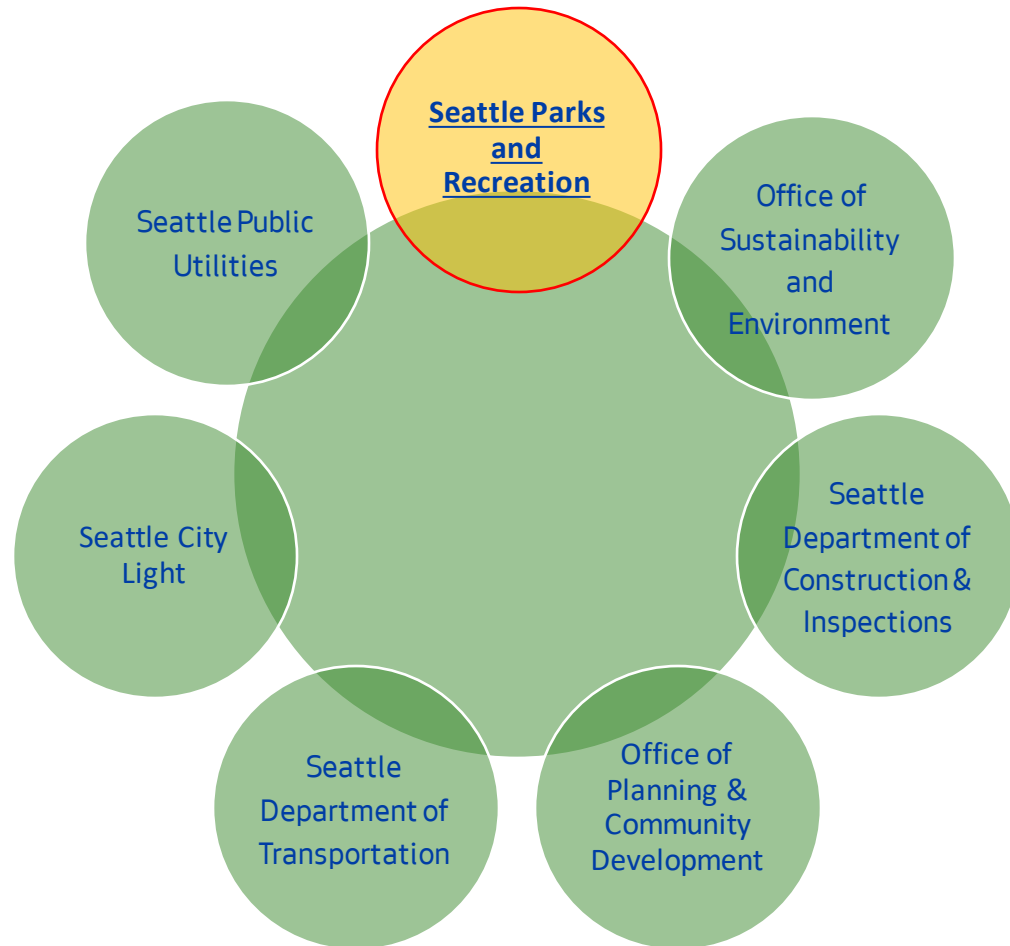
- SPR's Role in Citywide One Seattle Tree Plan
- Tree Canopy Assessment in SPR managed land
- Urban Forestry Programs – Developed Parks and Natural Areas-Green Seattle Partnership
- Canopy Restoration: Programs, initiatives and funding
- Questions

# Context: SPR Parks & Natural Areas

- 12% of city land area (6,400 acres)
  - Major canopy contributor (19% of citywide canopy)
- Critical space for people, ecosystem services, and wildlife habitat
- Two core programs using data-driven stewardship
  - Developed Parks
  - Natural Areas
- Equity – justice-based work programs
- United Nations Role Model City, national leader



# One Seattle Framework: Urban Forestry Vision



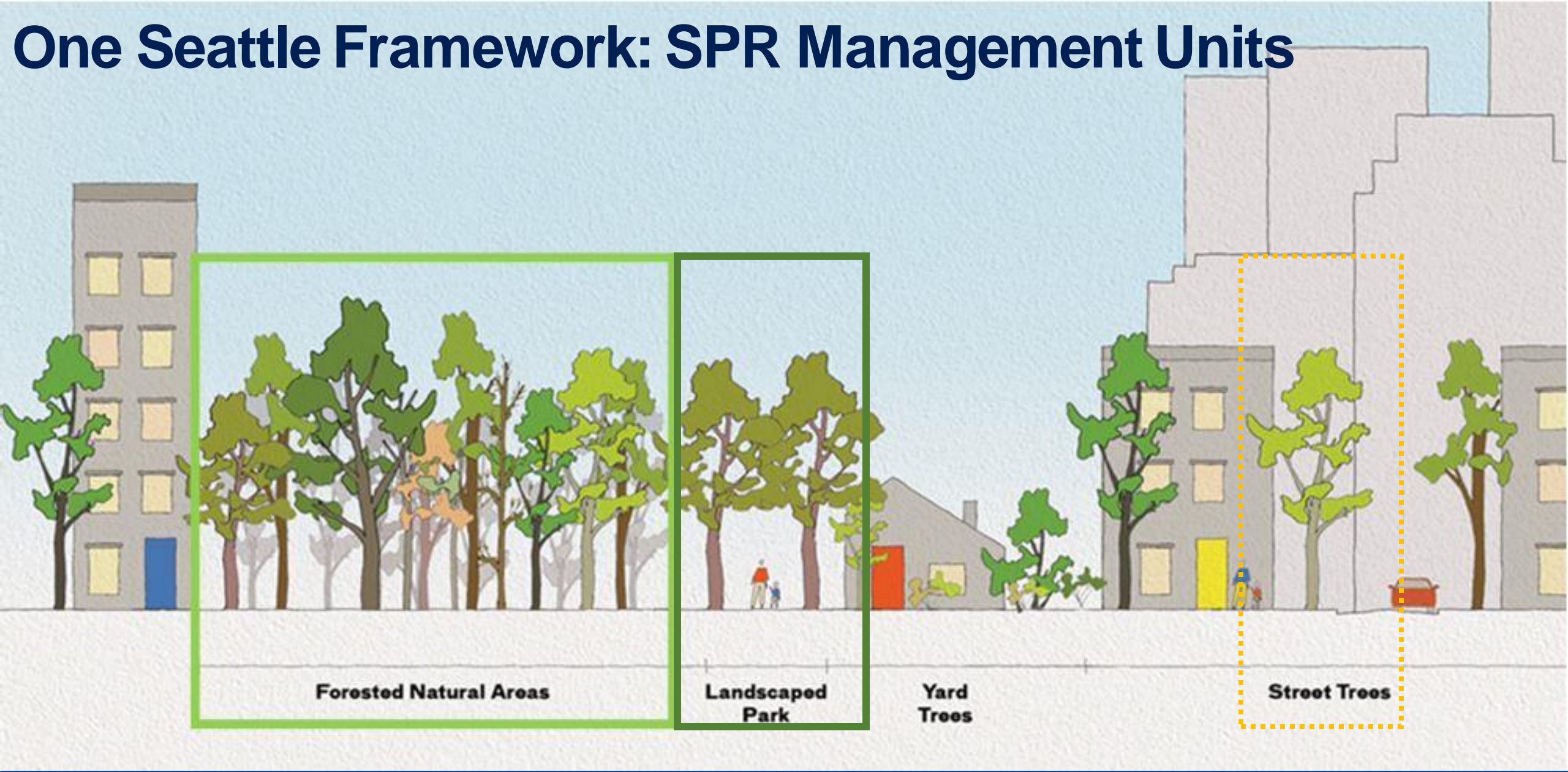
- Framework for setting urban forest vision and goals with an Action Agenda that drives near-term strategy and management
- Underscores the unique management needs for landscape types and the opportunities for collaborative cross-department work under OSE
- 2023 Mayor's Executive Order One Seattle Tree Plan reinforces need and builds new strategies for urban forestry efforts

# One Seattle Framework: Tree Plan (Executive Order 2023-03)

- 2:1 and 3:1 tree replacement ratios
- Post-planting care change to 5 years
- Native and climate-adapted trees
- Public-private partnerships
- Prioritize tree planting in BIPOC communities, areas of low canopy cover and High Heat Island impacts
- No tree size minimum (revised 2" caliper)
- Accountability reporting



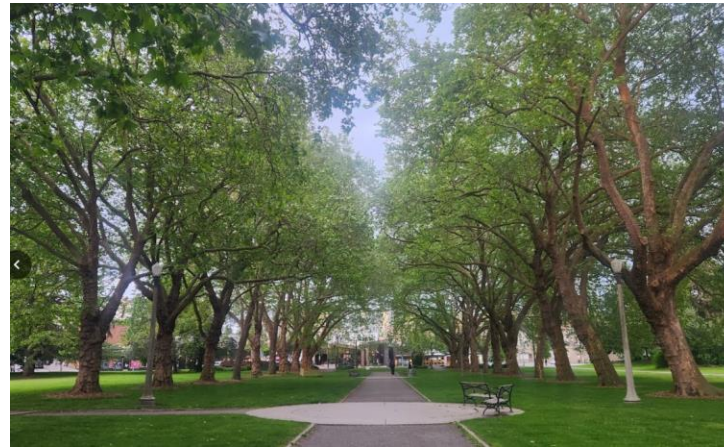
# One Seattle Framework: SPR Management Units



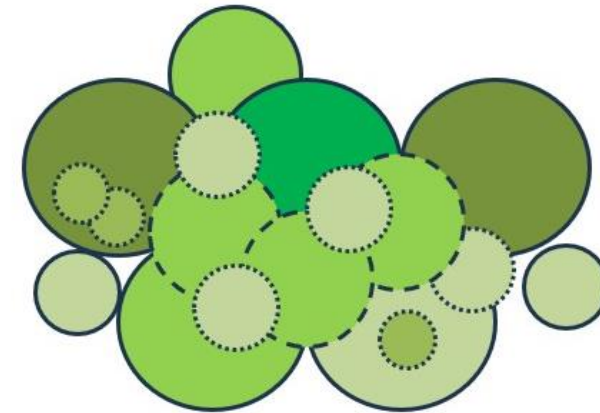
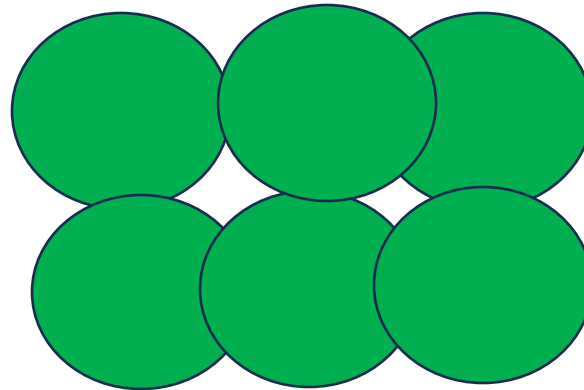
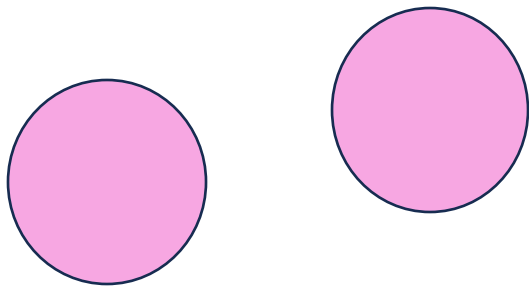
# Tree Canopy Assessment – SPR Management Units



# Tree Canopy Assessment: Considerations



- Tree cover varies
- Healthy urban forests have vertical layers





# Tree Canopy Assessment: SPR Management Unit



## APPENDIX A: CANOPY LOSSES AND GAINS BY MANAGEMENT UNIT

Management Unit	2016 Canopy Area (Acres)	Canopy Loss		Canopy Gain		Net Change		2021 Canopy Area (Acres)
		Acres	Percent	Acres	Percent	Acres	Percent	
Parks Natural Areas	2,176	182	8%	71	3%	-111	-5.1%	2,065
Developed Parks	708	60	8%	54	7%	-5	-0.8%	702

Management Unit		Land Area (% of City)	2021 Canopy Cover	% Contribution to City's Canopy Cover in 2021
Public	Developed Parks	4%	30%	5%
	Parks Natural Areas	5%	82%	14%
Right of Way		27%	24%	23%
City Total		100%	28% <sup>16</sup>	100%



# Urban Forest Health: Failure and Canopy Loss Drivers

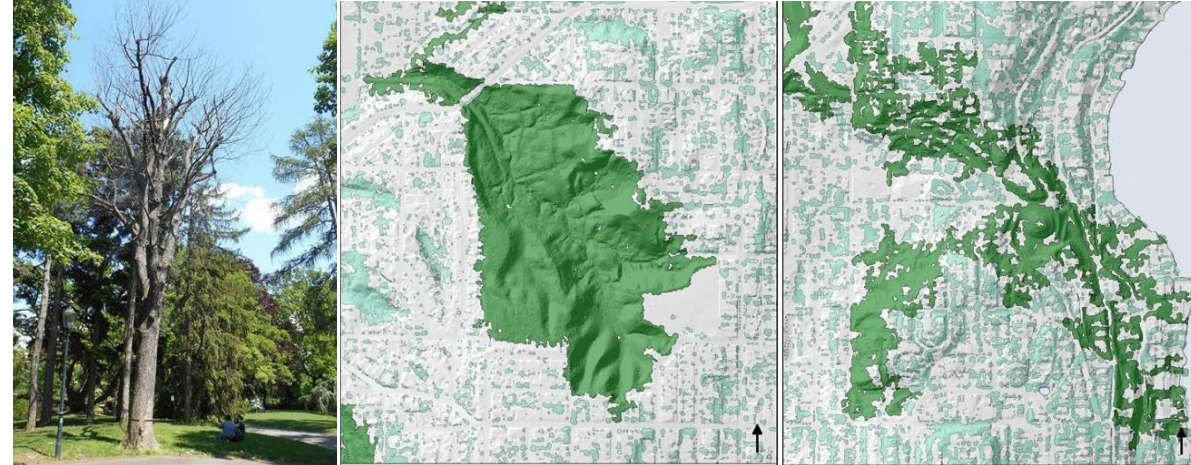
## All SPR Management Units

Climate change

- Pest and disease impacts
- Stress from high heat and drought
- Wind and storm events
- Aging deciduous trees

## Developed Parks (pre-2022)

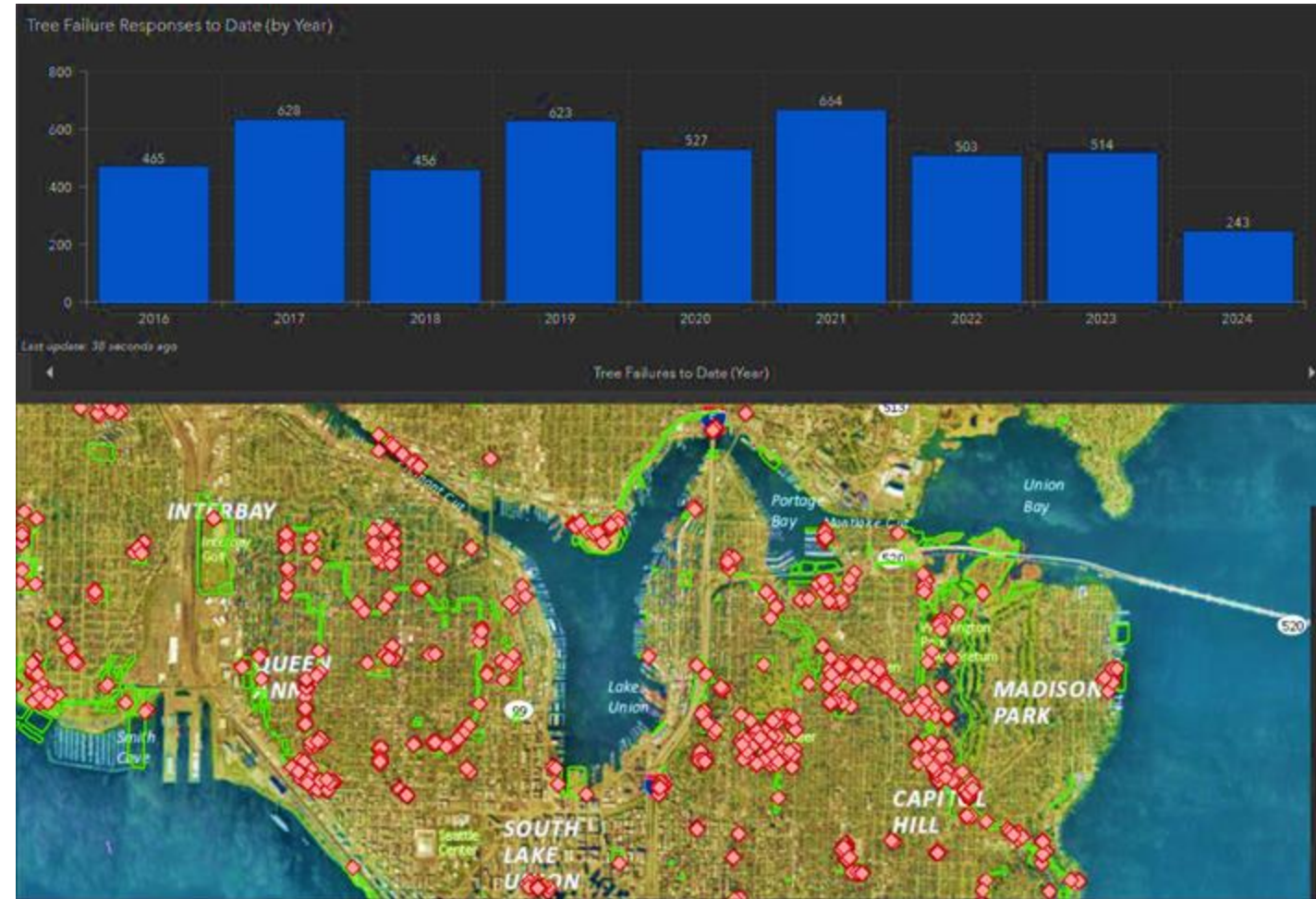
- Competing Objectives
- No formal replacement program
- No post-Establishment care



# Urban Forest Health: Canopy losses and Gains

## Tree Failure Responses (2016-to date)

- Removals rate roughly consistent
- Average 548 trees removed annually
- Only trees posing public safety risk
- Dead trees in natural areas retained



SPR's Urban Forestry Database: supporting data informed management

# Canopy Restoration Programs

To protect, preserve and grow the urban forest of Seattle



Public Safety



Tree Inspections

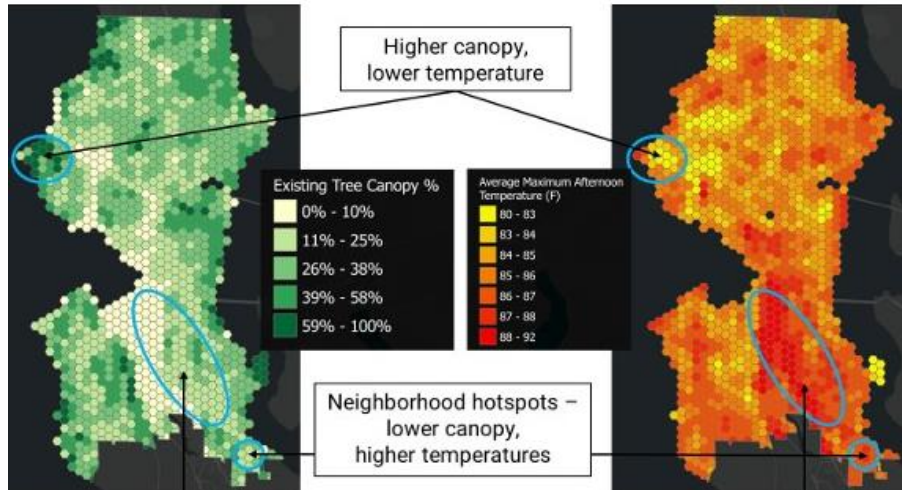
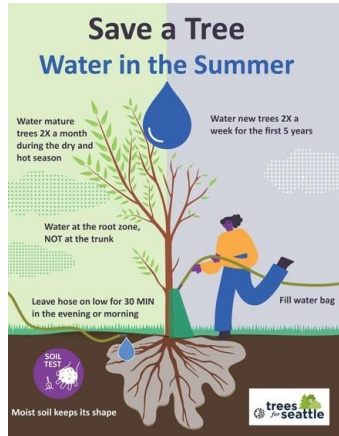


Tree Preservation



Tree Planting

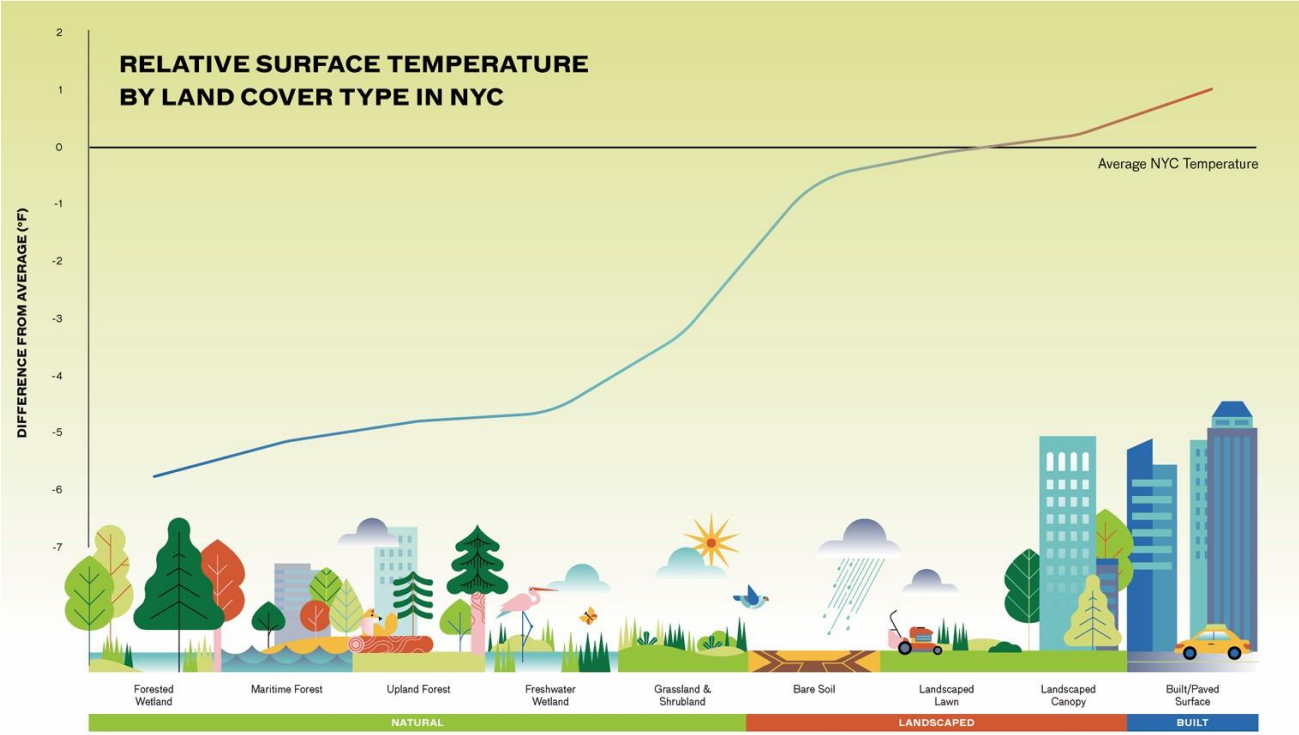
# Developed Parks Program: New Tree Planting Initiative



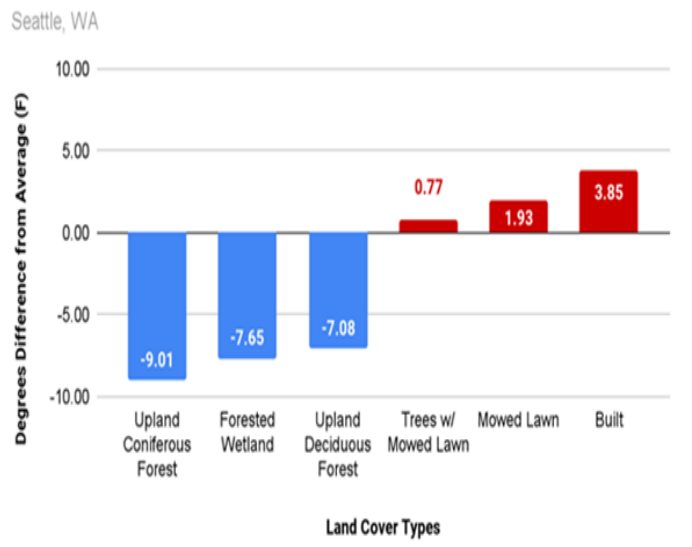
- Park District Cycle 2 expanded capacity of SPR's urban forestry teams to respond to climate change through tree planting and extending the tree care establishment period
- Uses RSJI and Heat Island prioritization (75%)
- Builds new systems for site and species selection planning
- Improves post planting care (5 years)
- Expands data collection and metrics reporting
- Meets tree replacement policy
- Emphasizes iterative learning

# Developed Parks Program: Site Considerations

## Trees and Heat Island Mitigation



### What land cover types are the coolest?



- Forested areas reduce citywide temperatures by 7-9 degrees
- Green and white roofs can be sustainable strategies for structures

# Developed Parks Program Tree Establishment Care (5 years)

- Tree planting outside of CIPs is new (2023)
- New tree mortality monitoring to be initiated in 2024
  
- One Seattle Tree Plan Reporting metrics
  - Number of trees planted
  - Trees removed
  - Tree mortality and cause
  - Survivorship
  - Final EO reporting details are being refined (OSE)



# Developed Parks Program: 2023 - 2024 Goals



- Initiate Tree Planting program
- Hire 4 Maintenance Laborers
- Confirm planning model and budget
- Build out data collection and monitoring
- Improve species and site selection
- Plant 500 large caliper trees
- Care for establishing trees
  - Mulch 300 trees
  - Water 500+ trees 2x per week
  - Prune 100 young trees



# Developed Parks Program: Accomplishments 2023+



**80%**  
Planted in  
Equity Zones

Seattle Tree Canopy 2016 2021 RSE Census Tracts

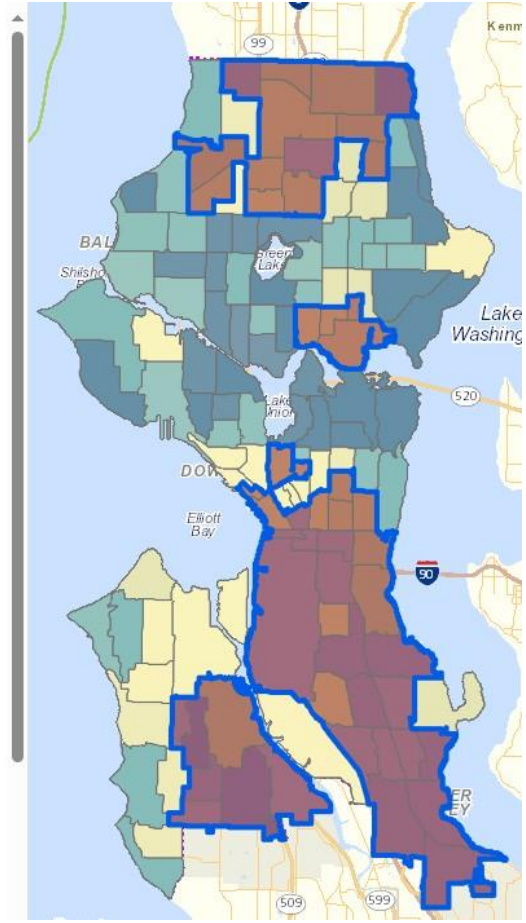
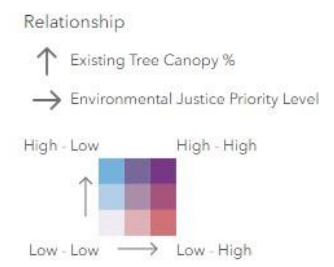
Environmental Justice Priority Areas



Census Tracts Composite Quintile



Existing Tree Canopy % and Environmental Justice Priority Level



# Developed Parks Program: Canopy Gains



## APPENDIX A: CANOPY LOSSES AND GAINS BY MANAGEMENT UNIT

Management Unit	2016 Canopy Area (Acres)	Canopy Loss		Canopy Gain		Net Change		2021 Canopy Area (Acres)
		Acres	Percent	Acres	Percent	Acres	Percent	
Developed Parks	708	60	8%	54	7%	-5	-0.8%	702

- 6 acres of future canopy planted in Year 1 of new Tree Crew initiative
  - (Canopy by 2055 maturity)
- 500 trees/year with 5 years management
  - (2500 in establishment care by 2028)

# Natural Area Program: Green Seattle Partnership

A collaborative effort to restore and enhance the forested parklands of Seattle



Improving human health through access to nature



Building wildlife habitat and improving Puget Sound health

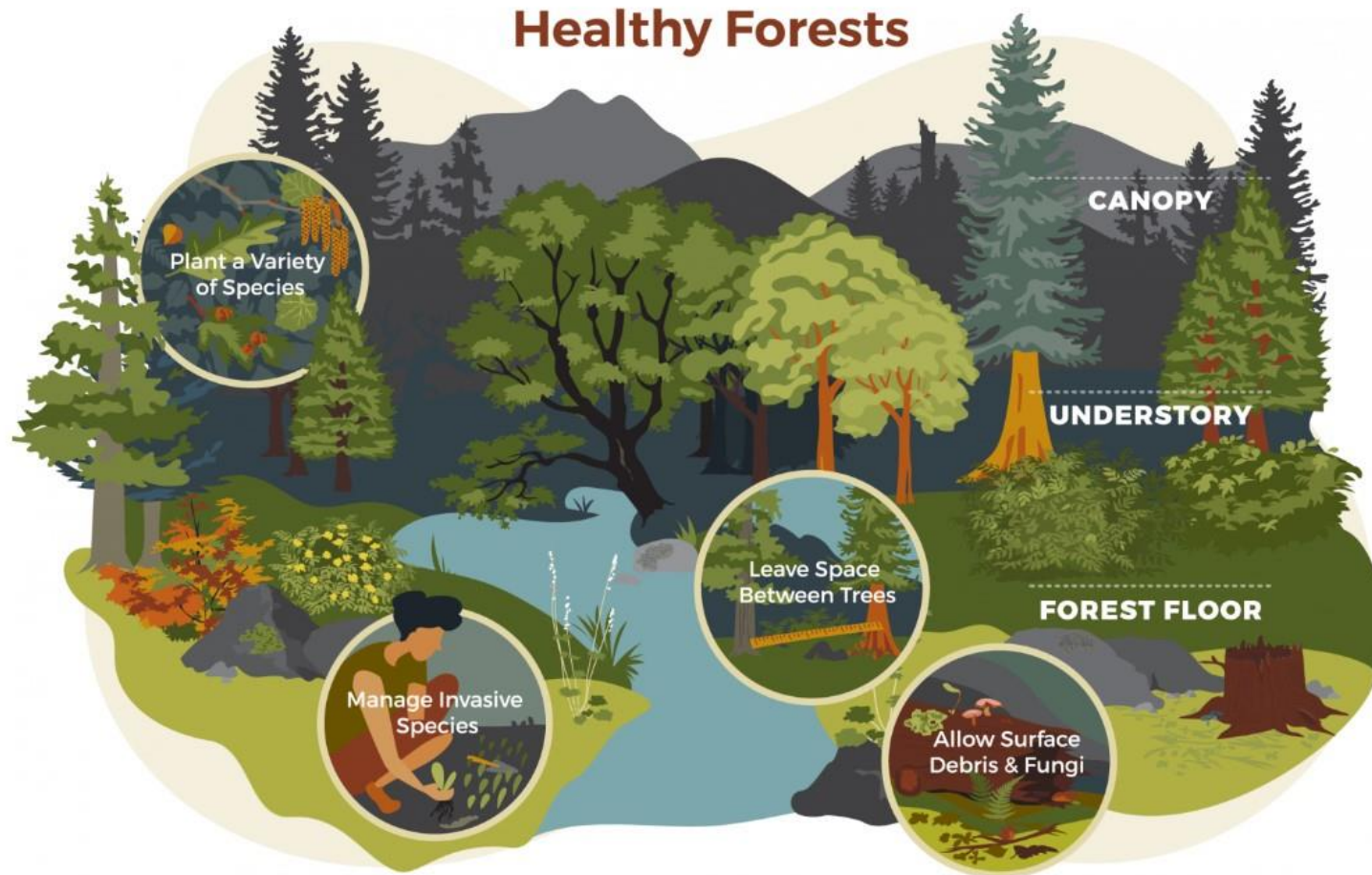


Strengthening neighborhood cohesion



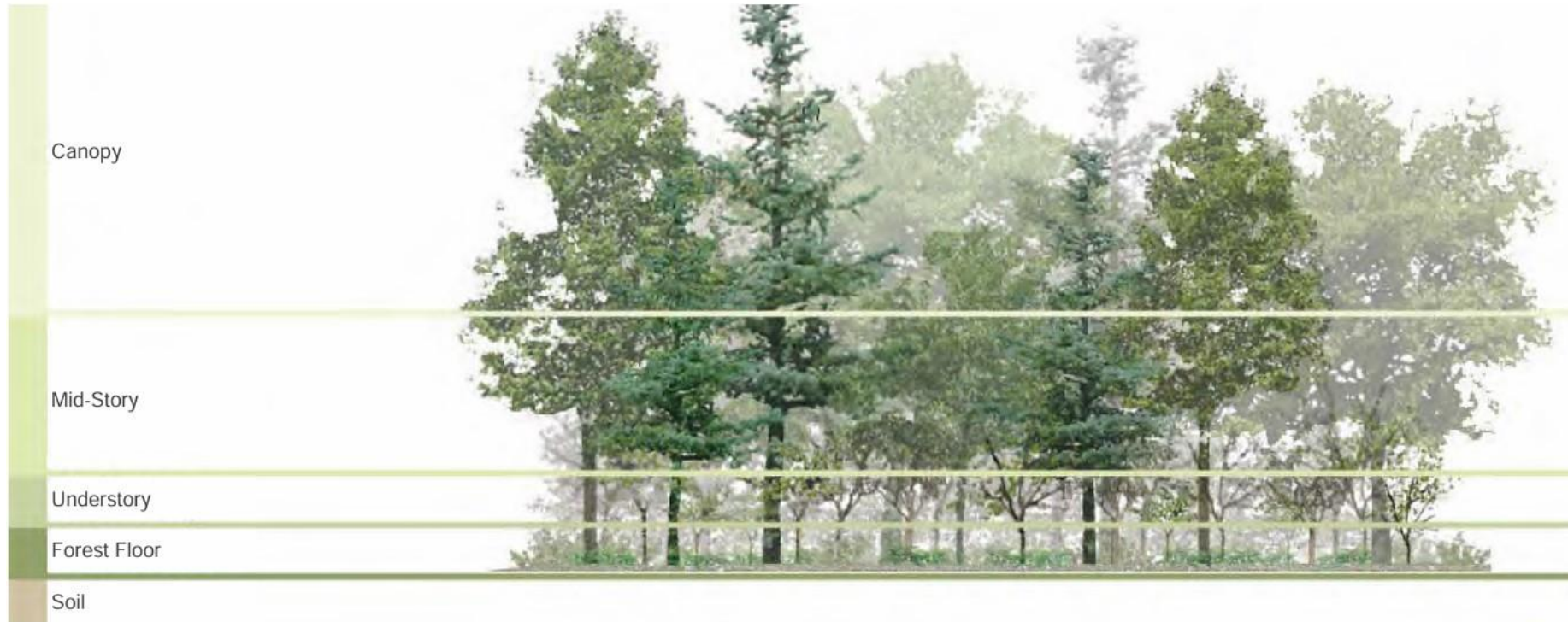
Increasing climate adaptation and resiliency

# Natural Areas: Measuring Healthy Urban Forests



[seattle.greencitypartnerships.org/event/calendar/](https://seattle.greencitypartnerships.org/event/calendar/)

# Natural Areas: Urban Forests Structure and Stewardship



The different layers of the forest are constantly interacting with various biotic and environmental elements.

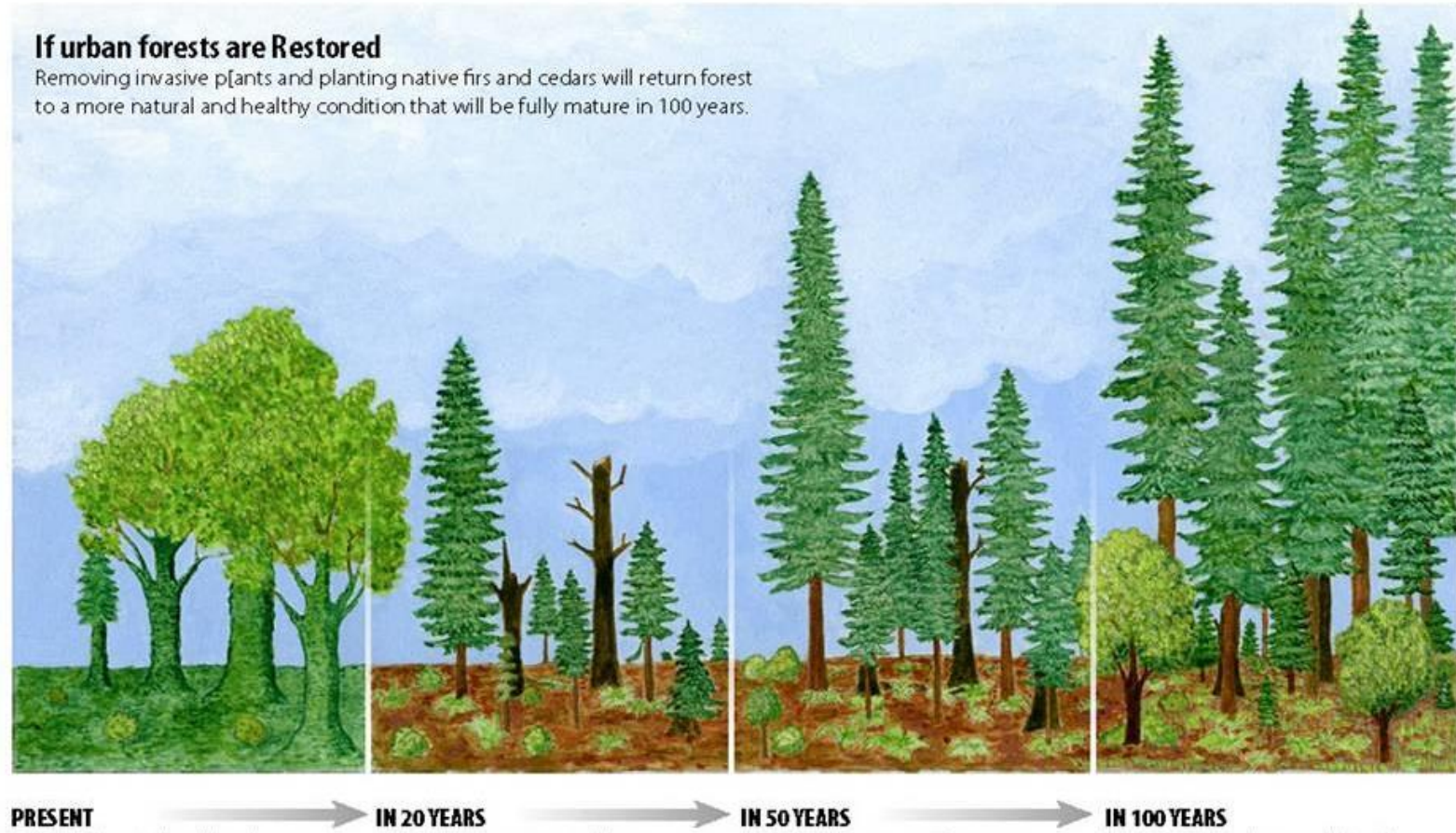
- 10,000 seedling trees planted annually
- New trees under existing canopy
- Stewardship actions allow forest succession (natural seedling regeneration)

# Natural Areas: Monitoring



## If urban forests are Restored

Removing invasive plants and planting native firs and cedars will return forest to a more natural and healthy condition that will be fully mature in 100 years.



- Tree regeneration increases (seedlings per acre)
- Tree diversity increases
- Weed species decreased
- Native species increased 9.7-13.5 species per plot

# Natural Areas: 19 Years of Transformative Programming



- 2,008 acres in ongoing restoration undergoing weed management and planting
- 1.37M volunteer hours since 2005
- 1.4M plants including 339K trees
- Nearing 50K trees freed from vines
- 164 active Forest Stewards in 75 parks leading their communities
- In 2023, 132 paid and stipend participants received on-the-ground restoration and community-building experience

# Natural Areas: Community Forest Steward Program

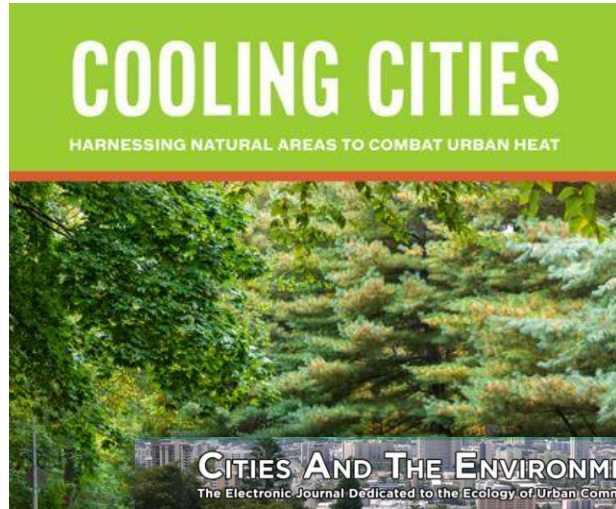


Forest Steward-led event in the East Duwamish Greenbelt

- Leadership role design and implement site restoration and community and volunteer engagement
- Currently 164 active in 75 parks and 75 volunteer Forest Stewards have provided 10+ years of service
- June 2024 Orientation as well as "On-Ramp" Training Series in Fall 2024 and January 2025 Orientation
- 2-year workplan coordinated by Seattle Parks and Recreation Ecology Team



# Summary: Model Program Leadership



**Caring and Cooling: Seattle's Forests in a Warming World**  
 by Michael Yadrick | Jul 31, 2023 | Science and Research  
 Recently, I went to see a movie with my family during a sizzling summer afternoon. The irony isn't lost on me that the movie's main message...

**Seattle awarded \$12.9 Million to plant trees, create jobs, advance climate justice, and restore forested places near schools, parks and low-income housing**

September 18, 2023 by David Benedict



**Seattle Selected as Role Model City for International Ecosystem Restoration Cohort**  
 by Callie Craighead on October 31, 2023



**Event Recap: A Conversation with Indigenous-led Organizations on Restoration Efforts**

by Barbara Mendez | Nov 2, 2023 | Event Spotlight  
 On Saturday, October 7th, GSP joined indigenous-led organizations at...



Fig. 2  
 Cities represented in the Forests in Cities network

**Washington Launches Statewide Partnership for Tree Equity, Aiming to Expand Canopy Cover and Promote Healthier Communities**

by David Benedict on May 9, 2023



On Thursday, April 13, Seattle Mayor Bruce Harrell and OSE Director Jessyn Farrell joined the Department of Natural Resources and American Forests at Roxhill Park to launch the Washington Tree Equity Collaborative, a statewide partnership to achieve Tree Equity across Washington State by expanding and fortifying neighborhood tree canopy cover.  
 The Washington Tree Equity Collaborative aims to enhance urban forestry programs over the next three years, with a focus on increasing tree canopy equity and engaging cities, community organizations, and stakeholders. The collaborative supports projects...

# Canopy Restoration: SPR Funding

<b>SPR Investments</b>	<b>2023 Actuals</b>	<b>2024 Budget</b>
Urban Forestry	\$2,252,483	\$2,382,935
Tree Crew Plus	\$763,611	\$861,092
Green Seattle Partnership	\$3,801,329	\$4,656,705
Natural Area Crew	\$1,041,092	\$1,519,430
<b>Total</b>	<b>\$7,858,515</b>	<b>\$9,420,162</b>

**Includes new Cycle 2 of the Park District (2023-2028) with additional Tree and Urban Forestry Investments**

- \$960K plus 5.0 FTE to support new tree program in developed parks (slightly less in year 1 due to ramp up)
- \$970K restored to Green Seattle Partnership funding to support urban forest health

**High level six-year goals of the investments over Cycle 2 (2023-2028)**

- 1,800 2-inch caliper trees planted (1,440 in High Priority Zones)
- 4,000 trees inspected and maintained (annual goal)
- 360,000 native plants installed (Green Seattle Partnership, excluding trees)
- 60,000 seedling trees planted (Green Seattle Partnership)

# Questions?

