

Westlake Park Improvements

Presentation to Seattle City Council

August 13th, 2025



Presentation Overview

Purpose: Today's legislation authorizes the Superintendent of Parks and Recreation to accept improvements at Westlake Park as a donation from the Seattle Parks Foundation

Agenda

- Project goals
- Partnership with Parks Foundation
- Project Background
- Project scope
- Public engagement
- Project schedule



Project Goals

- Improve guest experience
 - Enhance accessibility
 - Expand green spaces
 - Improve community amenities
 - Enhance sustainability.
- Address safety and security needs
 - Lighting
 - Vehicular Crash Mitigation
 - Reset Uneven Paving
- Address aging infrastructure
 - Including removal of the fountain and arch, modification of the stage
- Set the stage for future improvements
- Part of the Mayor's Downtown Activation Plan (DAP)



Agreement Between SPR and Seattle Parks Foundation

Key Terms

- Parks Foundation to be granted use of Westlake Park for the project duration
- Parks Foundation to execute the baseline project scope and transfer completed improvements to the City
- Project to be completed in accordance with City standards that are applicable for inclusion and fair labor practices
- SPR to provide fixed funding to the project (city funding added during 2025 budget process to SPR's 2025-2030 CIP)
- Parks Foundation to pursue non-SPR funds, including grants, to support the project
- City resumes management and maintenance of Westlake Park once the improvements are completed and accepted by the City



Baseline Project Scope

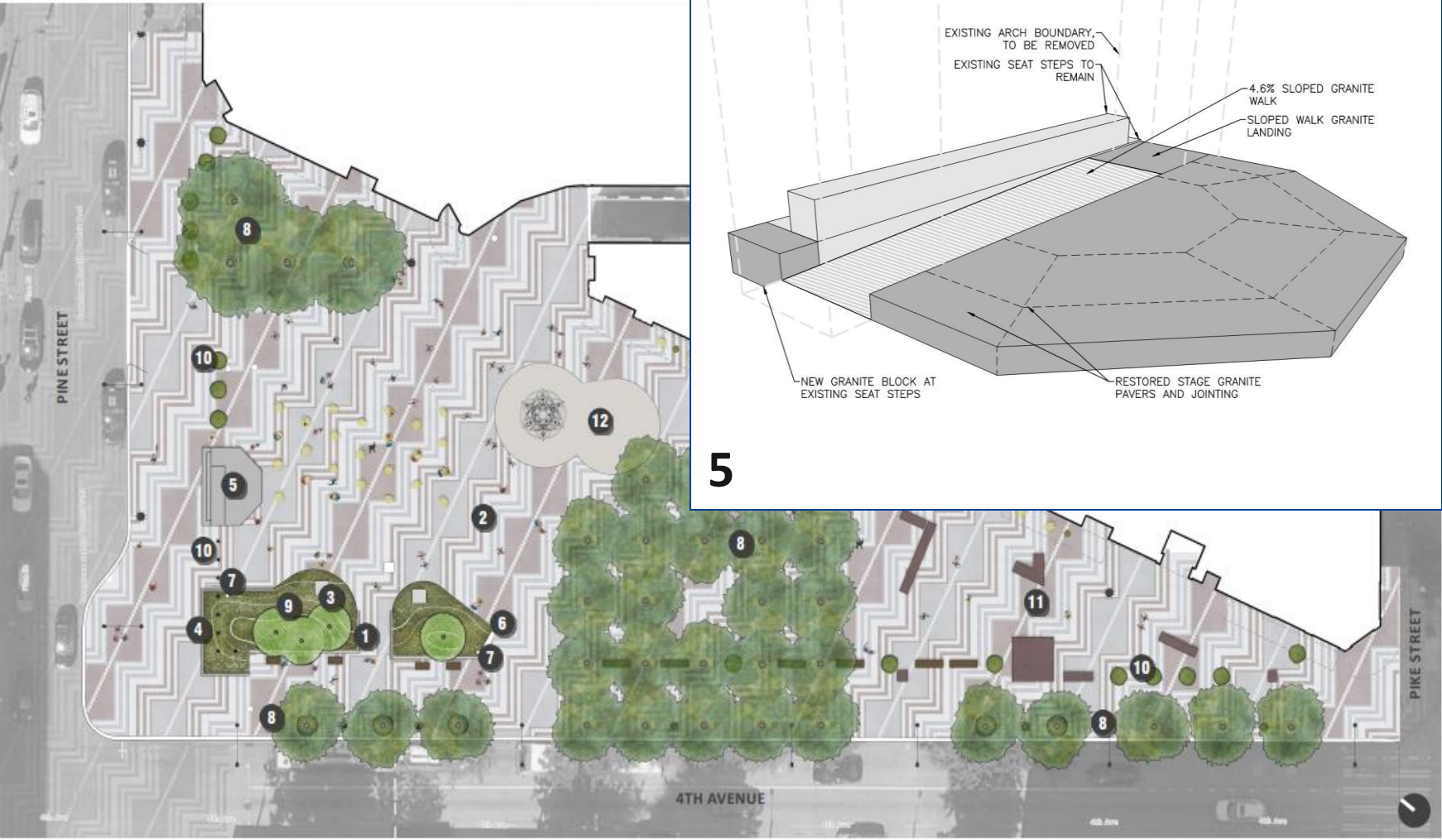
- Removal of out-of-commission fountain and arch
- Modify the stage for accessibility and functionality
- Electrical improvements, including infrastructure to support lighting
- Paving restoration
- Vehicle crash protection
- Installation of planting areas

Estimated Total Project Cost: \$4.8M



Westlake Park Improvement Project

SITE PLAN UPDATES



WESTLAKE PARK



Park improvement legend

- 1 The fountain is removed
- 2 The existing Coast Salish basket weave pattern is maintained. Uneven pavers are leveled and restored
- 3 Carved granite from the arch is salvaged and incorporated into the park
- 4 Portions of the granite curb, surrounding the fountain, are preserved
- 5 The existing podium is modified for ADA accessibility, to maintain history of gatherings, free speech and events
- 6 Electrical upgrades are made for improved site lighting and seasonal events
- 7 Two new power pedestals for food trucks and event power
- 8 Conditions for the existing trees are improved to increase longevity and address uneven pavement
- 9 New landscaping and irrigation are added to enhance the gathering plaza and park
- 10 Crash rated bollards and deterrants are added at the perimeter of the park for pedestrian safety
- 11 Existing Seven Hills art installation to remain
- 12 Existing play area to remain

Improvements Continued



Public Engagement

- Re-Imagine Westlake Charette: July 2024
- Stakeholder meeting: October 2024
- Public Open House: Nov. 2024, Concept Design
- Public Online Survey: Dec. 2024
- Public Open House: April 2025, Design Development
- Project Update: Planned for August 2025



Community Stakeholder Group

Group participants:

- Residents of nearby and adjacent buildings
- Property managers and property owners of nearby and adjacent buildings
- Downtown Community Council
- Belltown and Denny Triangle representatives
- Service providers
- Downtown Seattle Association
- Sound Transit
- City Departments including Seattle Center, SDOT, OED, DON, and ARTS
- Amazon
- The Seattle Kraken
- Friends of the Waterfront



Project Schedule

Phase 1: July 1, 2024 – November 1, 2024 - complete

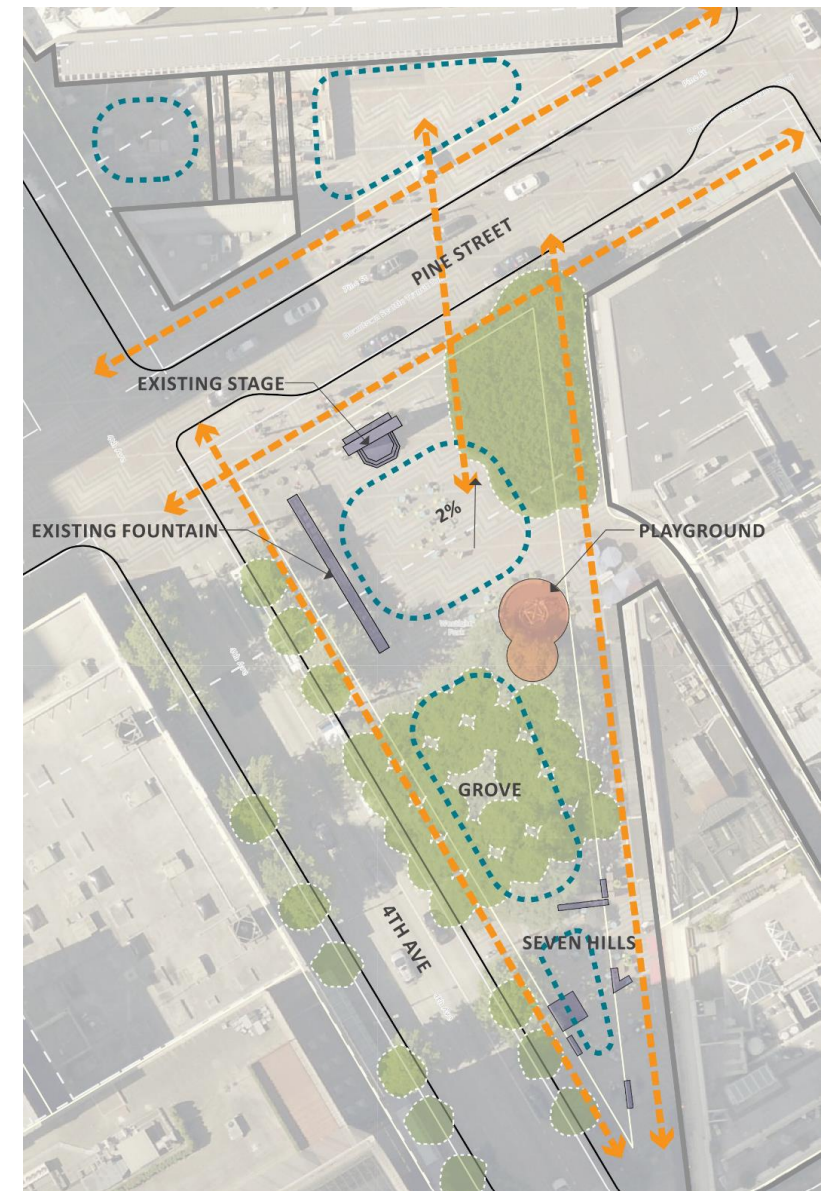
- Planning and Concept Design
- Public Outreach and Stakeholder Engagement

Phase 2: November 2024 – September 2025

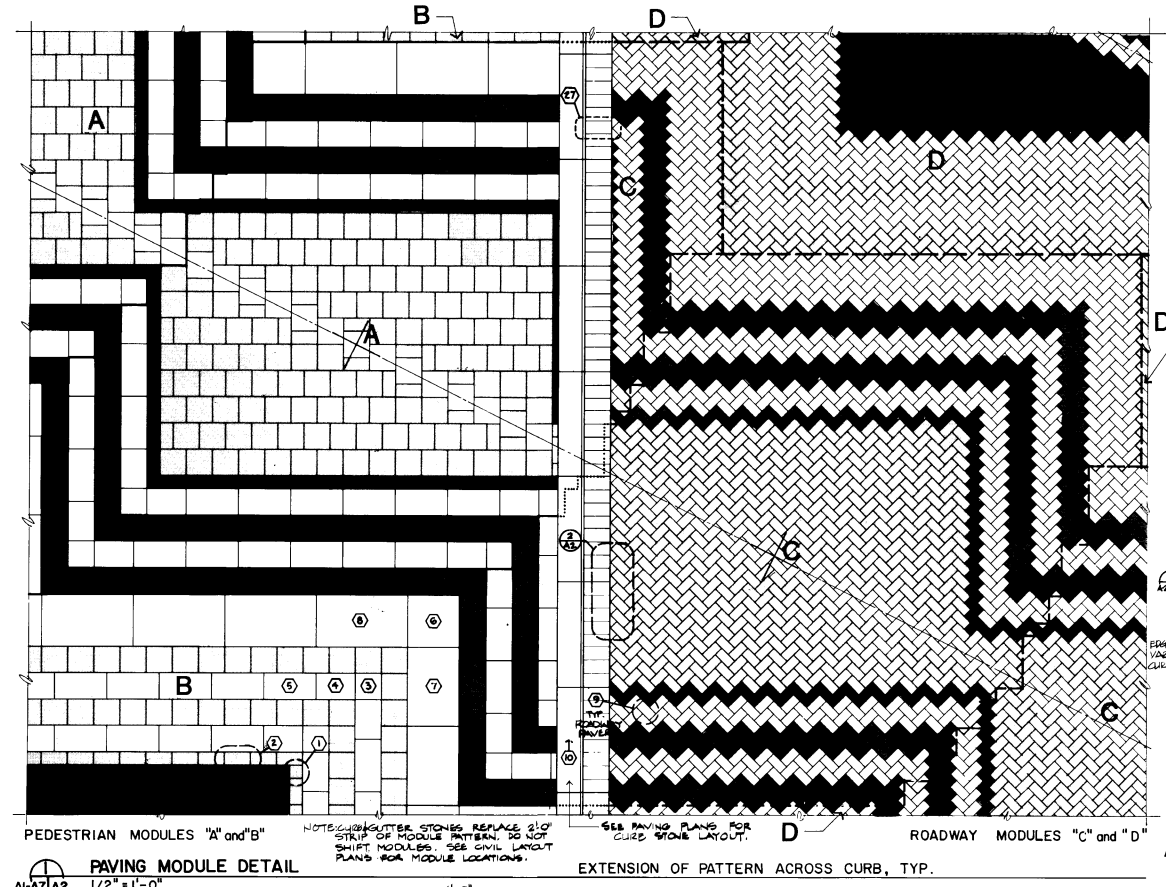
- Community Engagement including Public Open House
- Design, Engineering and Permitting
- Construction Documents and Contracting for Construction

Phase 3: September/October 2025 – April 2026

- Construction – Completion Prior to FIFA World Cup Games



Questions?



**A snip from the original 1987 Westlake Park hand-drafted plans showing the intricate Coast Salish inspired basket weave paving pattern. This project will preserve this granite paving and address areas where the pavers have heaved.*