

Exhibit A – Easement Maps

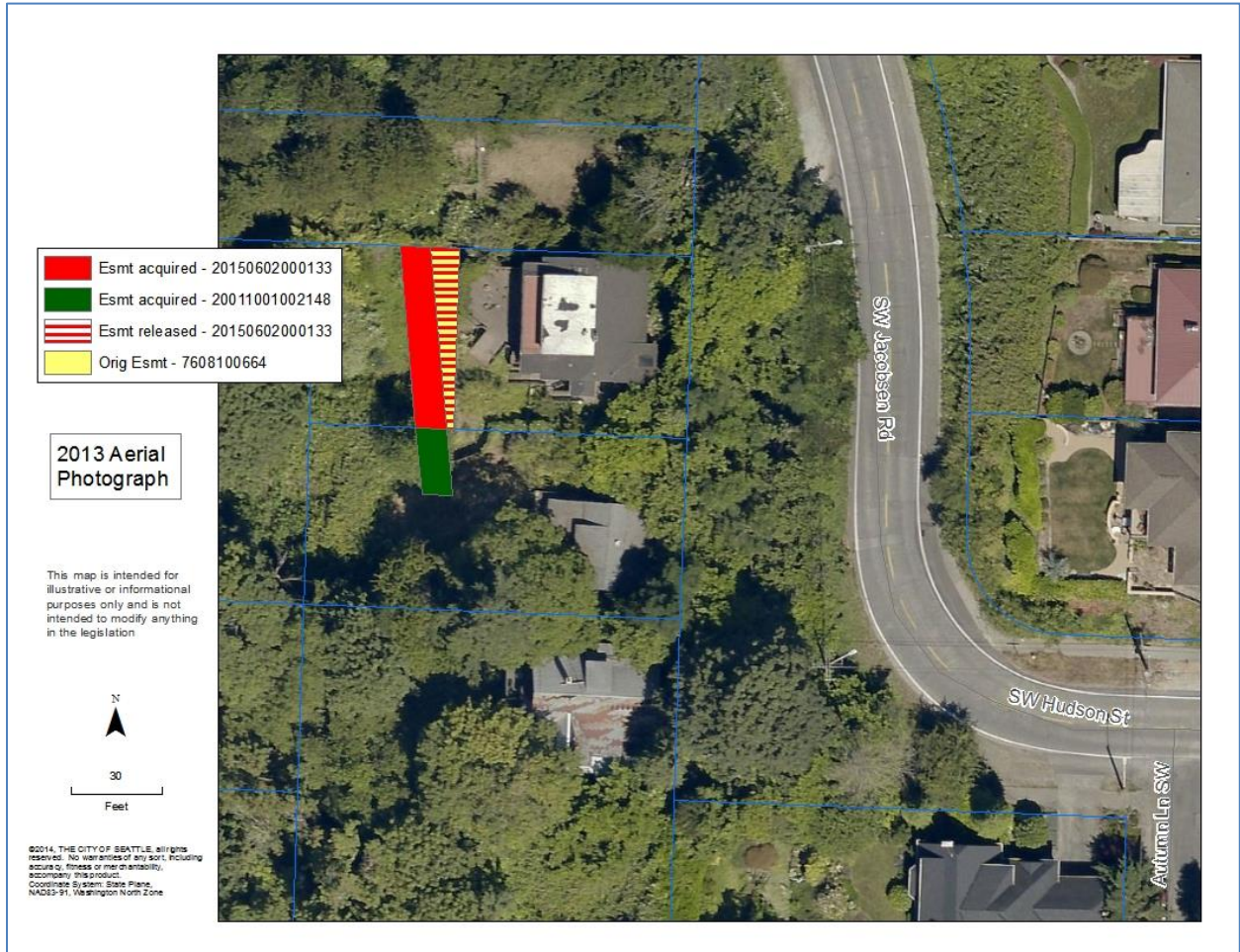
Note 1: Paragraph numbers match the paragraph numbers in Attachments 1 and 2 to Ordinance.

Note 2: These maps are intended for illustrative or informational purposes only and are not intended to modify anything in the legislation.

Paragraph 1, Attachment 1 & Paragraph 1, Attachment 2: Map of property rights transferred by document with King County Recording Number 20011023000854. (SPU file numbers 2001-020-01 and 2001-020-02)



Paragraph 2, Attachment 1 & Paragraph 2, Attachment 2: Map of property rights transferred by document with King County Recording Number 20150602000133, re-record of 20011005000211. (SPU file numbers 7508-03 and 2001-008-A)



Paragraph 3, Attachment 1 & Paragraph 3, Attachment 2: Map of property rights transferred by document with King County Recording Number 20010330002175. (SPU file numbers 8130 and 2001-005)



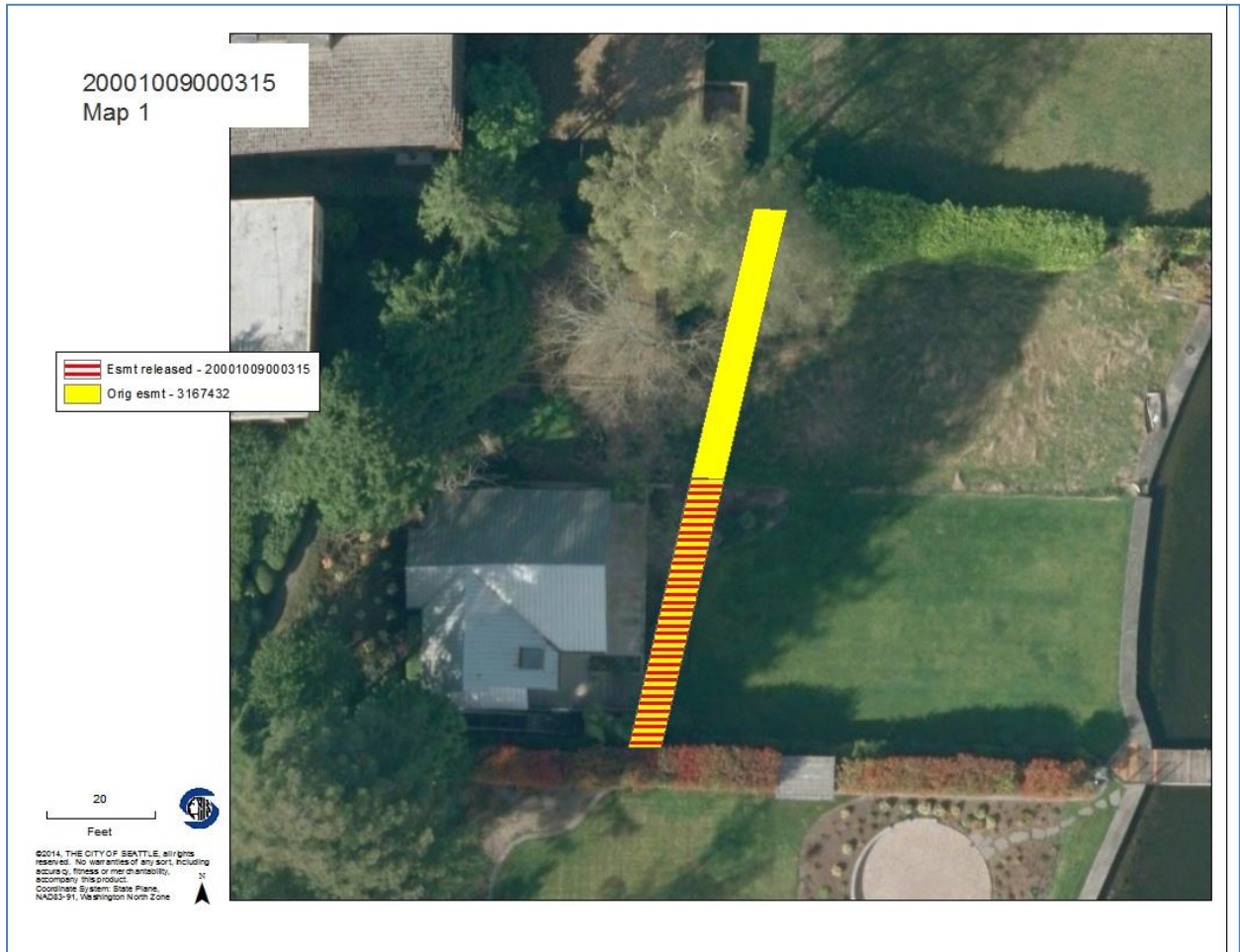
Paragraph 4, Attachment 1 & Paragraph 4, Attachment 2: Map of property rights transferred by document with King County Recording Number 20010122000592. (SPU file numbers 7531 and 2000-011)

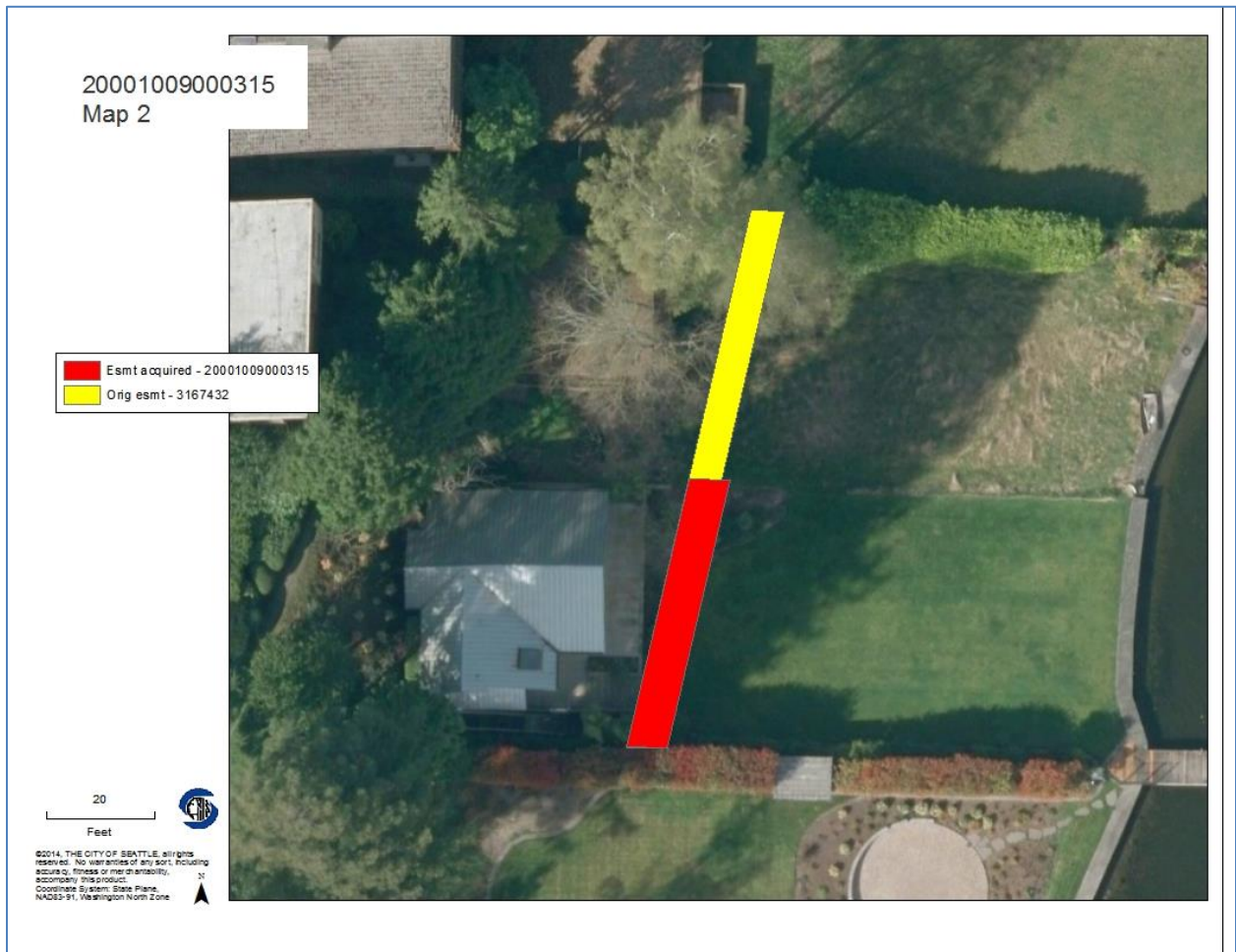


Paragraph 5, Attachment 1: Map of property rights relinquished by document with King County Recording Number 20011018000347. (SPU file number 2000-010)



Paragraph 6, Attachment 1 & Paragraph 5, Attachment 2: Two maps showing property rights transferred by document with King County Recording Number 20001009000315. (SPU file numbers 2000-001-001 and 2000-001)





Paragraph 7, Attachment 1 & Paragraph 6, Attachment 2: Map of property rights transferred by document with King County Recording Number 20000727000699. (SPU file numbers 1512-48 and 2000-003-01)



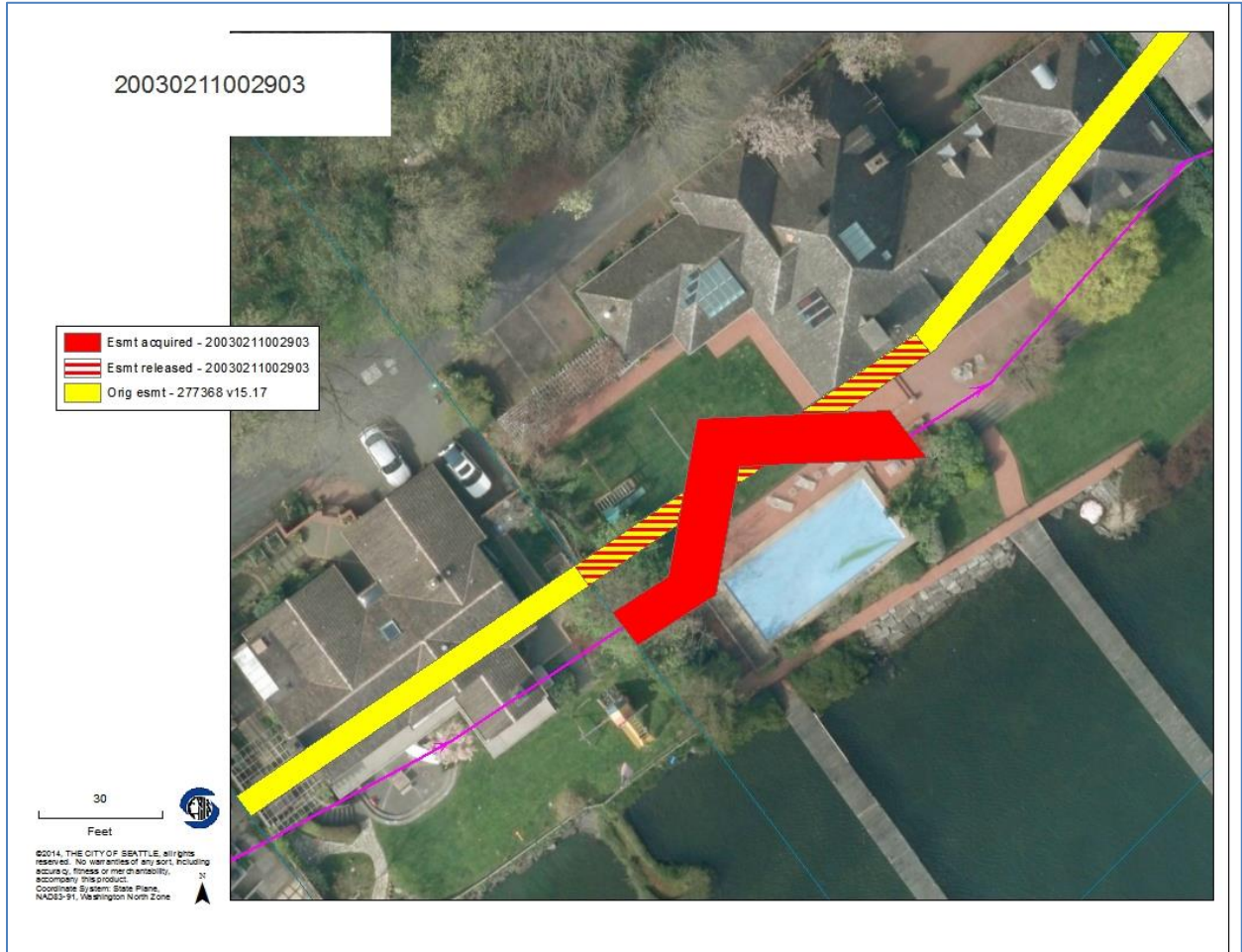
Paragraph 8, Attachment 1 & Paragraph 7, Attachment 2: Map of property rights transferred by document with King County Recording Number 20000727000700. (SPU file numbers 1512-31 and 2000-003-02)



Paragraph 10, Attachment 1: Map of property rights relinquished by document with King County Recording Number 20000727000702. (SPU file number 2000-003-03)



Paragraph 11, Attachment 1 & Paragraph 8, Attachment 2: Map of property rights transferred by document with King County Recording Number 20030211002903. (SPU file numbers 96033-001 and 96033)

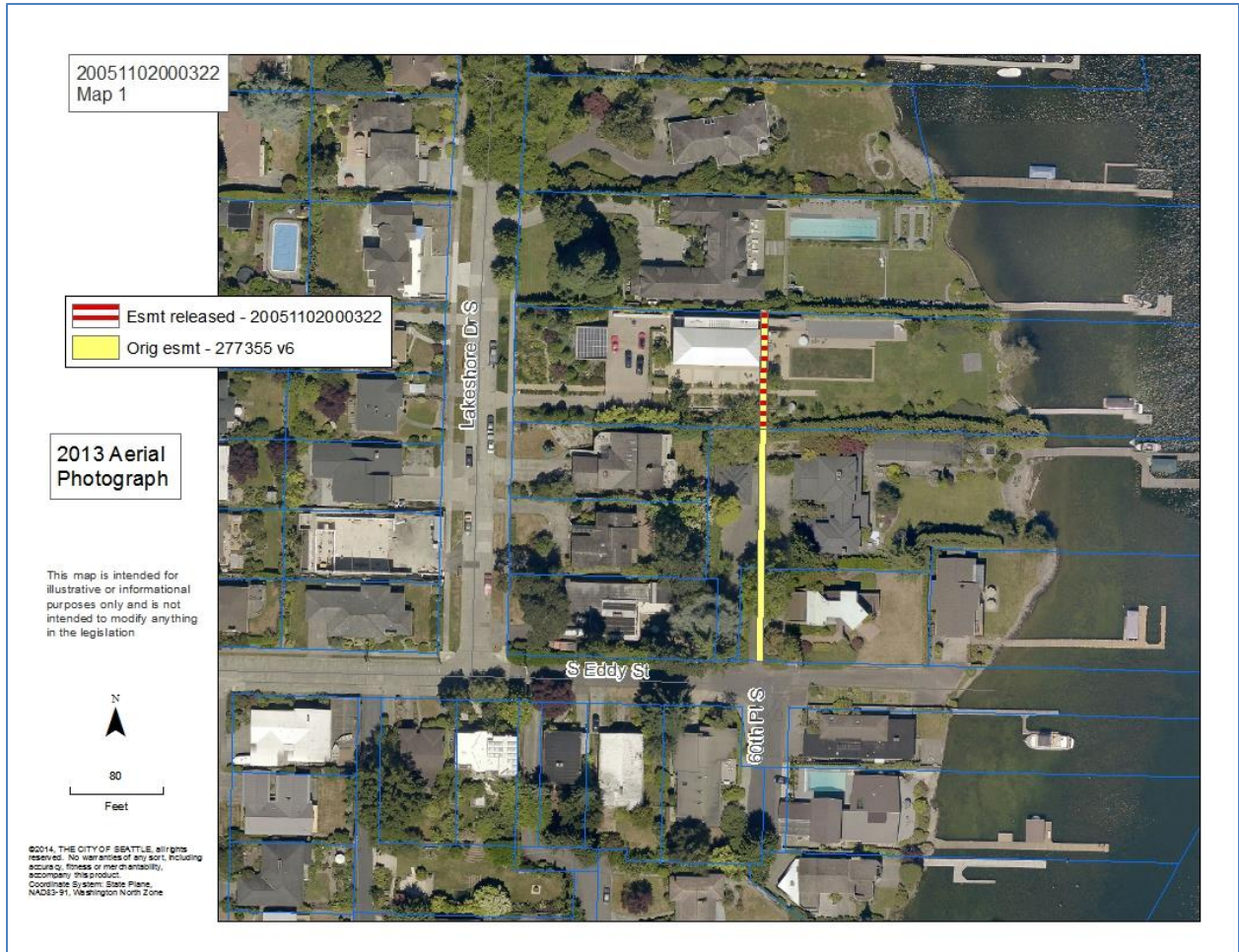


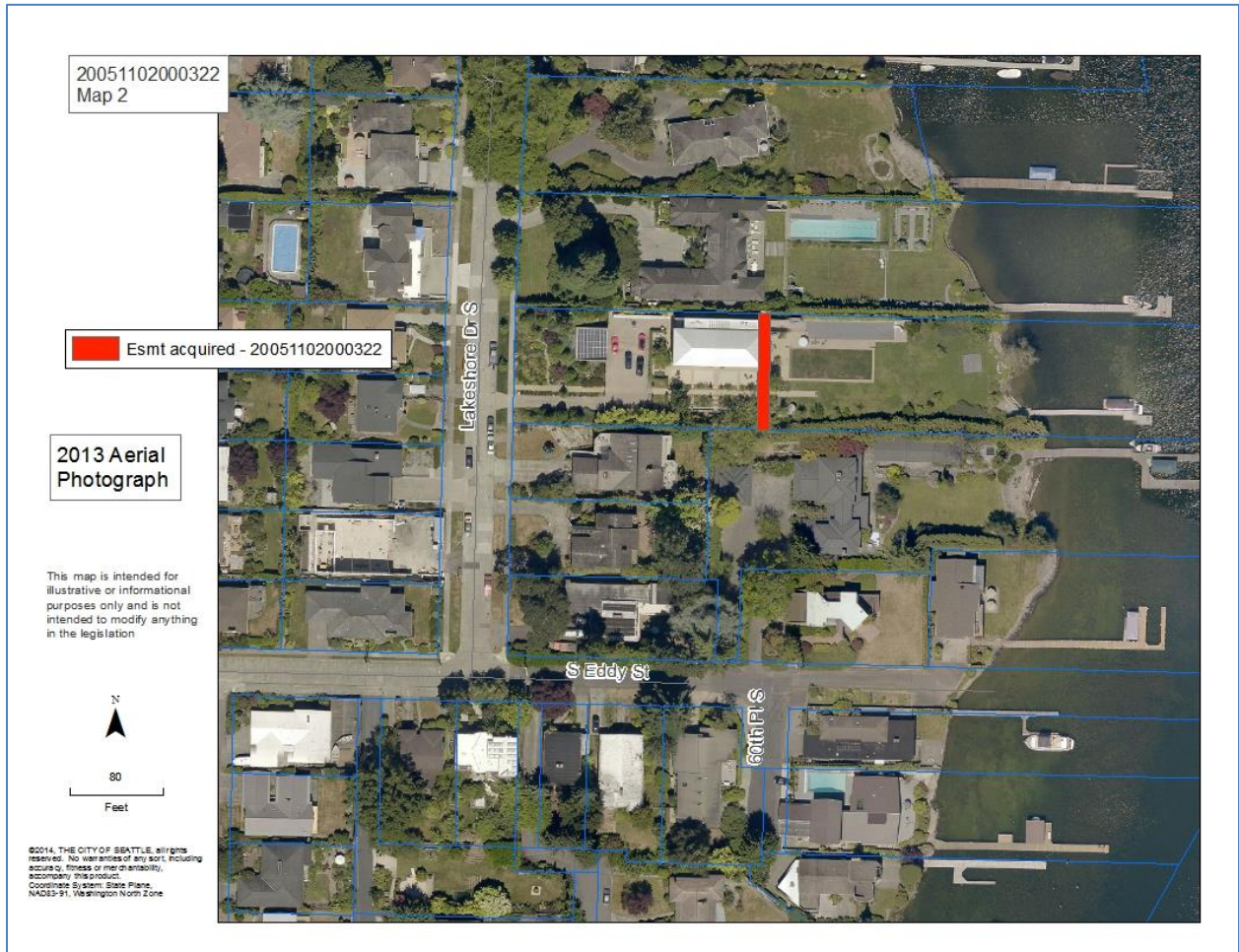
Paragraph 12, Attachment 1 & Paragraph 9, Attachment 2: Two maps of property rights transferred by document with King County Recording Number 20150223000090. (SPU file numbers 8604-07 and 2014-013-001)





Paragraph 13, Attachment 1 & Paragraph 10, Attachment 2: Two maps of property rights transferred by document with King County Recording Number 20051102000322. (SPU file numbers 2005-08-003 and 2005-08-002)



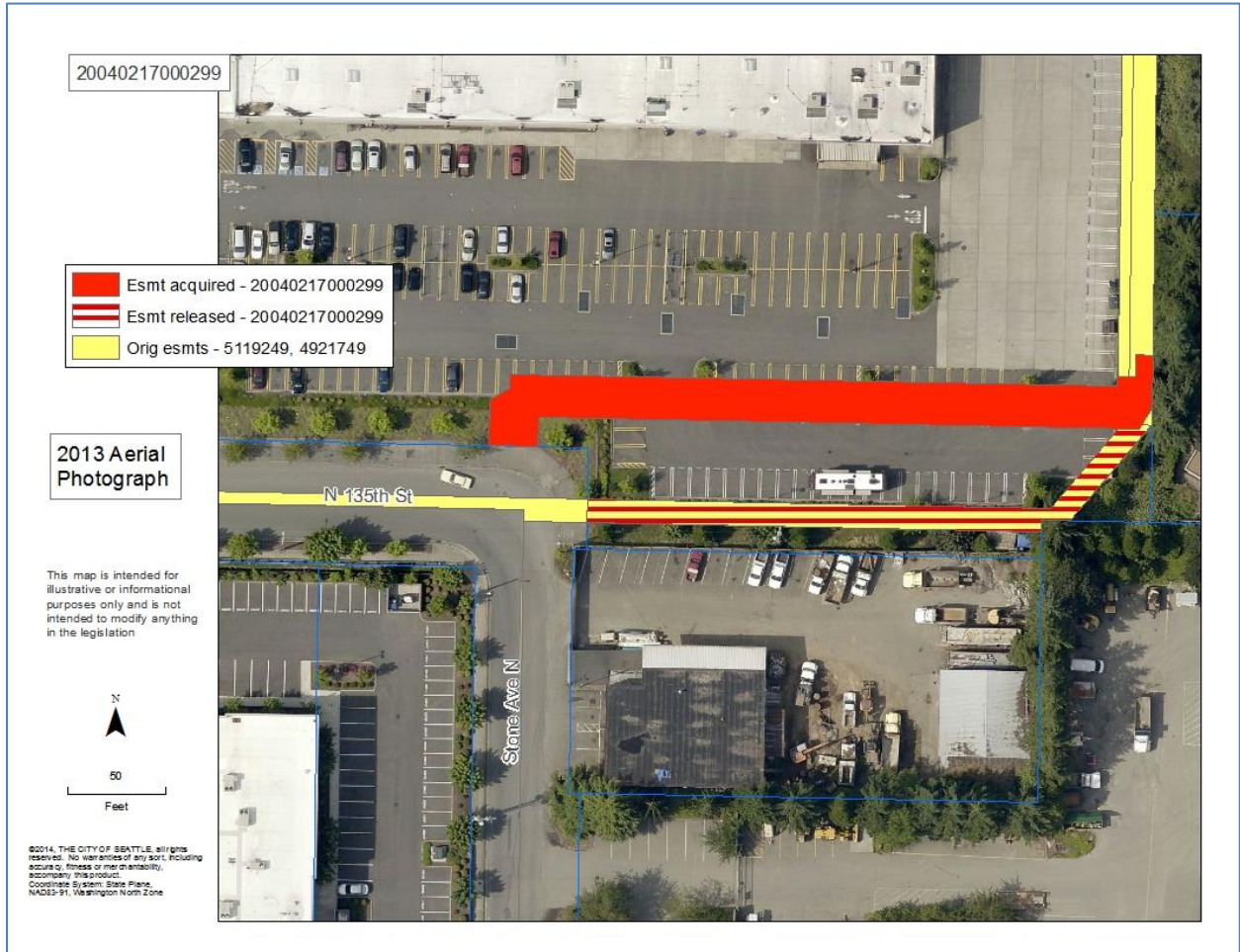


Paragraph 14, Attachment 1 & Paragraph 11, Attachment 2: Maps of property rights transferred by document with King County Recording Number 20011206000969. (SPU file numbers 2001-027-B and 2001-027)





Paragraphs 15 & 16, Attachment 1 & Paragraph 12, Attachment 2: Map of property rights transferred by document with King County Recording Number 20040217000299. (SPU file numbers 2003-31-003 and 2003-31-002)



Paragraph 17, Attachment 1 & Paragraph 13, Attachment 2: Map of property rights transferred by document with King County Recording Number 20020924000654. (SPU file numbers A0076-01 and 2002-23-001)



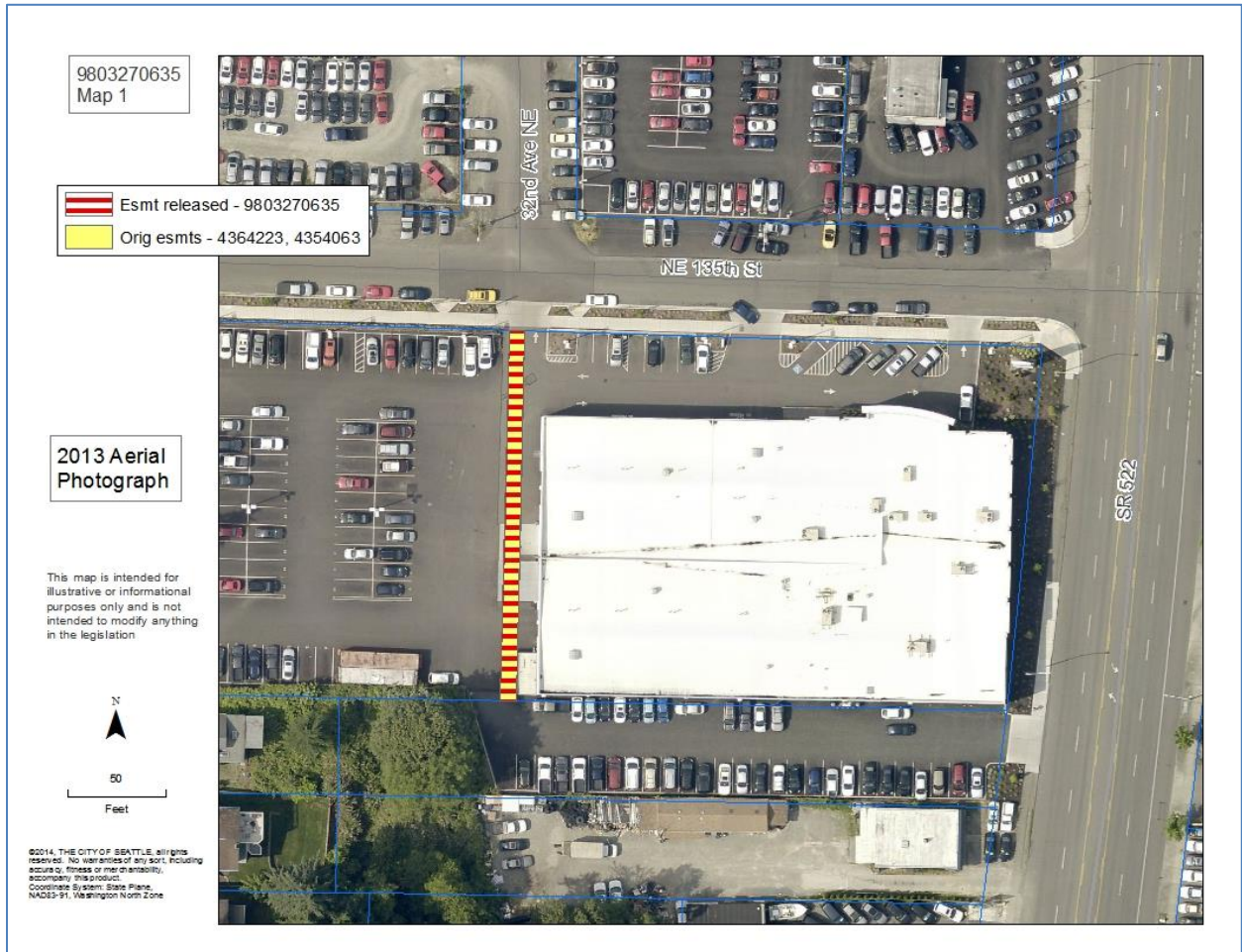
Paragraphs 18 & 19, Attachment 1 & Paragraph 14, Attachment 2: Map of property rights transferred by document with King County Recording Number 20031208001638. (SPU file numbers 2002-22-001 and 2002-22-003)



Paragraph 20, Attachment 1 & Paragraph 15, Attachment 2: Map of property rights transferred by document with King County Recording Number 20020927000102. (SPU file numbers 2002-10-D and 2002-10-B)

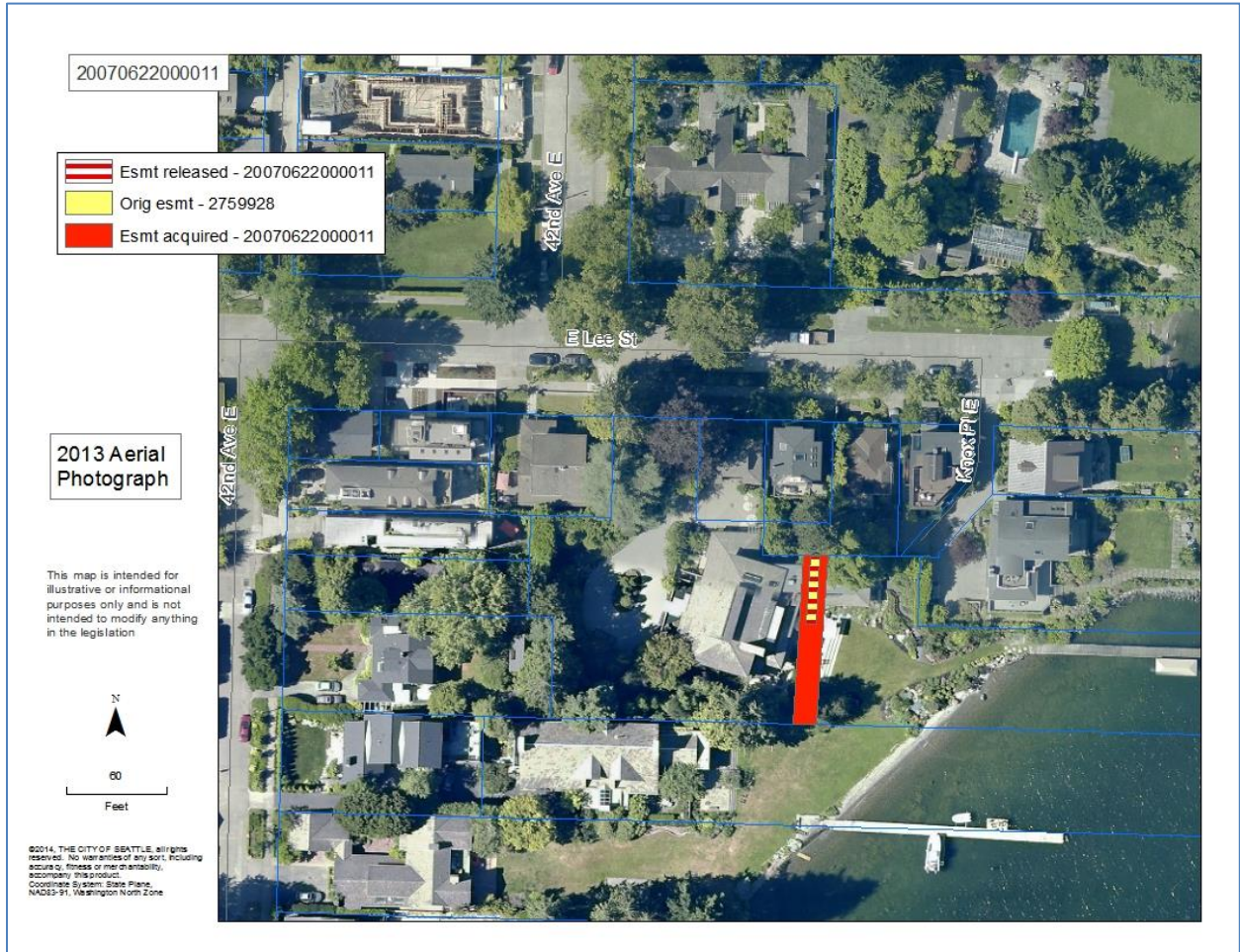


Paragraphs 21 and 22, Attachment 1 & Paragraph 16, Attachment 2: Two maps of property rights transferred by document with King County Recording Number 9803270635. (SPU file numbers LC06-01 and 97039)

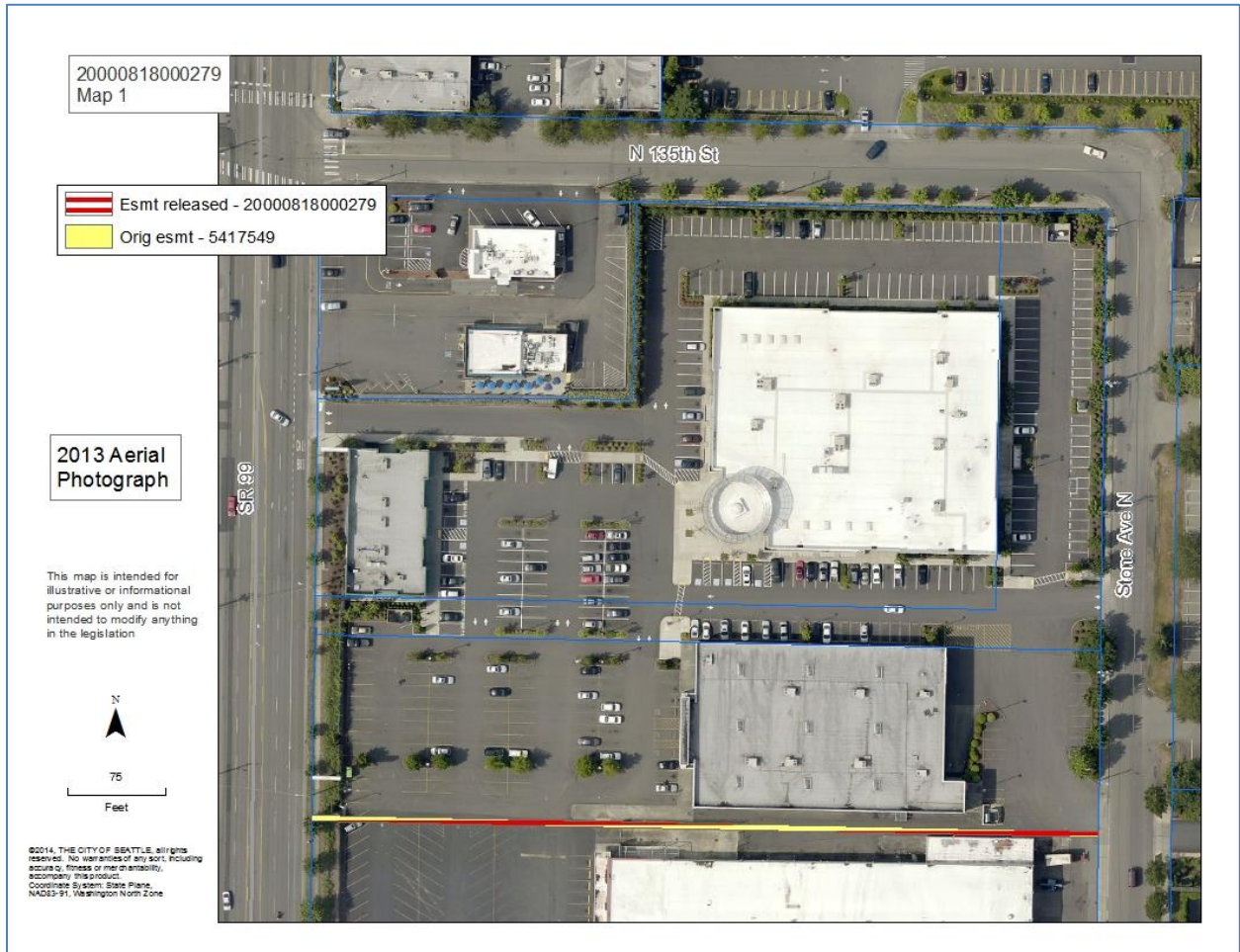


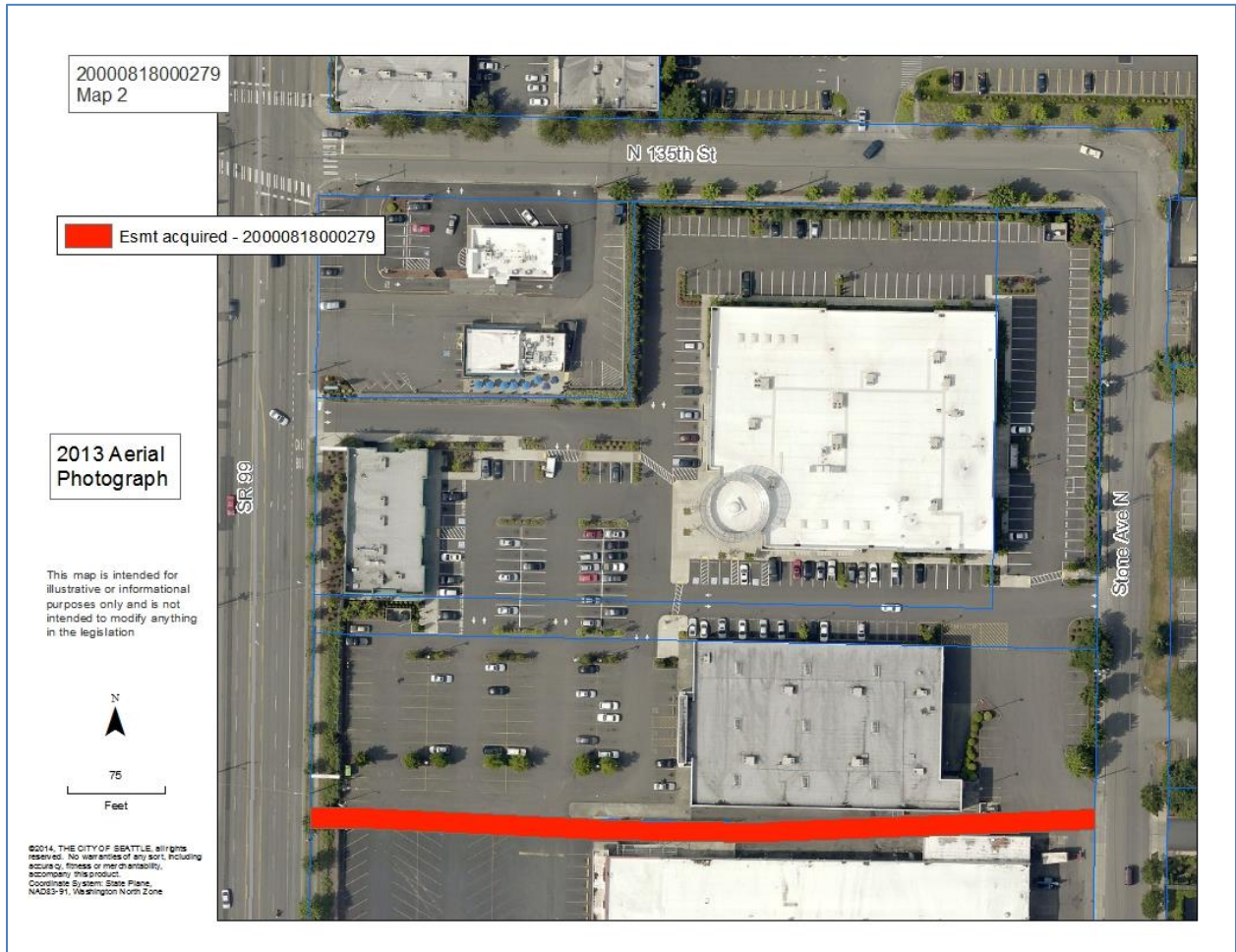


Paragraph 23, Attachment 1 & Paragraph 17, Attachment 2: Map of property rights transferred by document with King County Recording Number 20070622000011. (SPU file numbers 8622-03 and 2007-002-001)



Paragraph 24, Attachment 1 & Paragraph 18, Attachment 2: Two maps of property rights transferred by document with King County Recording Number 20000818000279. (SPU file numbers 862-02 and 99006)





Paragraph 25 & 26, Attachment 1: Map of property rights to be transferred. (SPU file numbers 98017-A and 98017-B)

