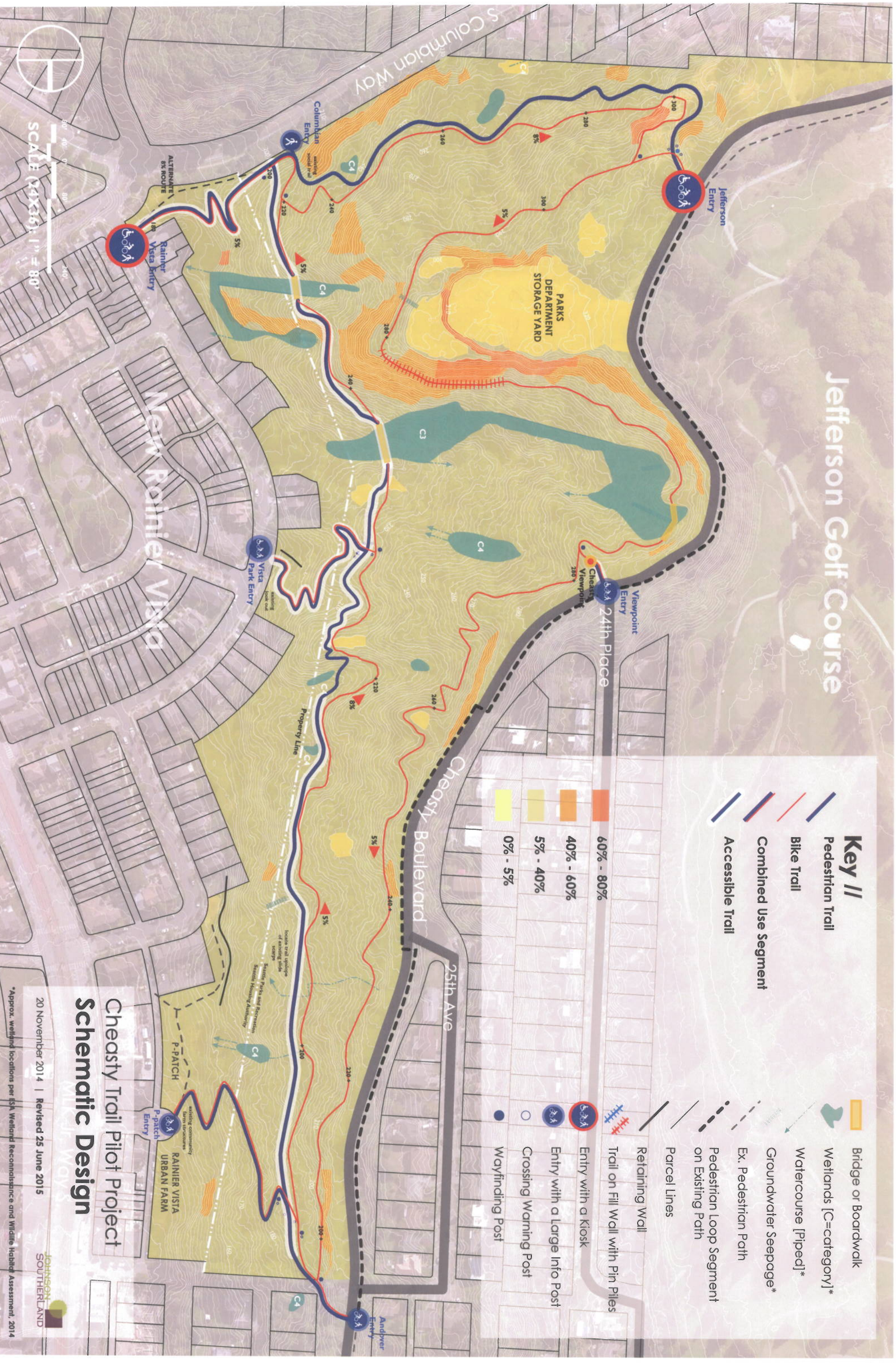


Jefferson Golf Course



Key //

- Pedestrian Trail
- Bike Trail
- Combined Use Segment
- Accessible Trail

- 60% - 80%
- 40% - 60%
- 5% - 40%
- 0% - 5%

- Bridge or Boardwalk
- Wetlands [C=category]*
- Watercourse [Piped]*
- Groundwater Seepage*
- Ex. Pedestrian Path
- Pedestrian Loop Segment on Existing Path
- Parcel Lines
- Retaining Wall
- Trail on Fill Wall with Pin Piles
- Entry with a Kiosk
- Entry with a Large Info Post
- Crossing Warning Post
- Wayfinding Post

Cheasty Trail Pilot Project Schematic Design

20 November 2014 | Revised 25 June 2015

*Approx. wetland locations per ISA Wetland Reconnaissance and Wildlife Habitat Assessment, 2014

