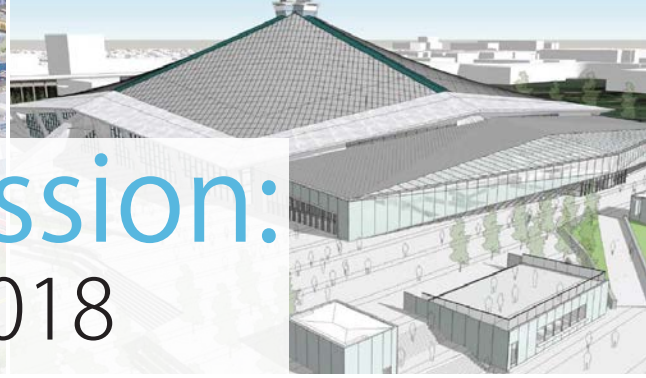


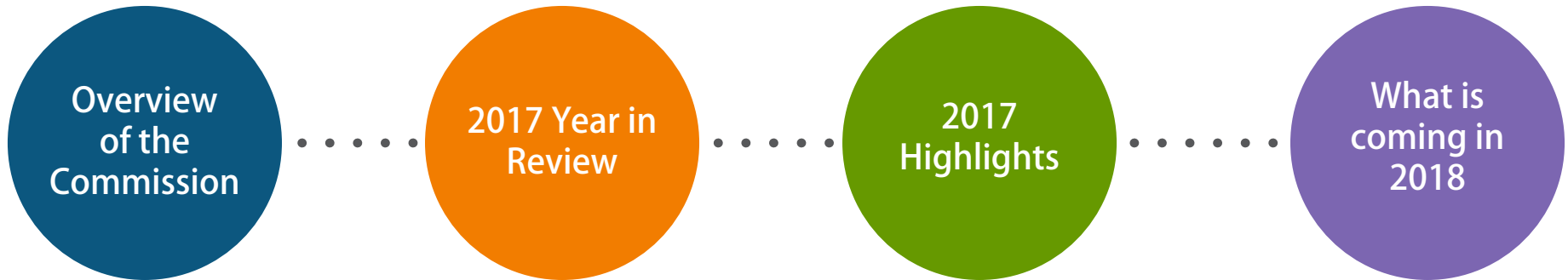
Seattle Design Commission:

Year in review and outlook on 2018

Planning, Land Use & Zoning Committee
March 7, 2018



PRESENTATION OUTLINE



OVERVIEW OF THE COMMISSION

- **Established in 1968**
- **Advise the Mayor and City Council on projects affecting the public realm, including:**
 - Capital Improvement Program projects (CIP)
 - Right-of-Way projects (ROW)
 - Street and alley vacations
 - Skybridges
 - Long-term street use permits
 - Major transportation projects (M)
 - Plan or policy reviews (P)
 - Light Rail Review Panel (LRRP) - **Completed its reviews in 2016**
 - Members from Design, Arts, and Planning Commissions
 - Focus: review of light rail stations and neighborhood integration

OVERVIEW OF THE COMMISSION

Mission

- **Inspired Design** - Inspired design unifies the public realm and inspires the community by embodying state-of-the-art practices.
- **Contextual Integration** - Integrated design responds to its context and enhances its neighborhood.
- **Innovative Sustainability** - Sustainable design minimizes environmental impact and provides long-term self-sufficiency.
- **Social Inclusion** - Inclusive design seeks to elevate the quality of life for all and responds fluently to its cultural context.
- **Exemplary Partnerships** - Design partnerships leverage public, community, and private resources, integrating design efforts across multiple disciplines and agencies to achieve greater results with the same resources.
- **Effective Investments** - Effective design provides high value for the investment by thoughtfully considering flexibility, longevity, and total life-cycle costs.

OVERVIEW OF THE COMMISSION

Commission Structure



4 required appointments:

- 2 Architects
- 1 Fine Artist
- 1 lay member



5 additional appointments from the following professions:

- Urban Planner
- Urban or Environmental Designer
- Licensed Engineer
- Landscape Architect



1 member from the Get Engaged Program



Commission Staff:

- Director
- Coordinator
- Planner
- Administrative Staff



Commission meets 1st and 3rd Thursday of each month



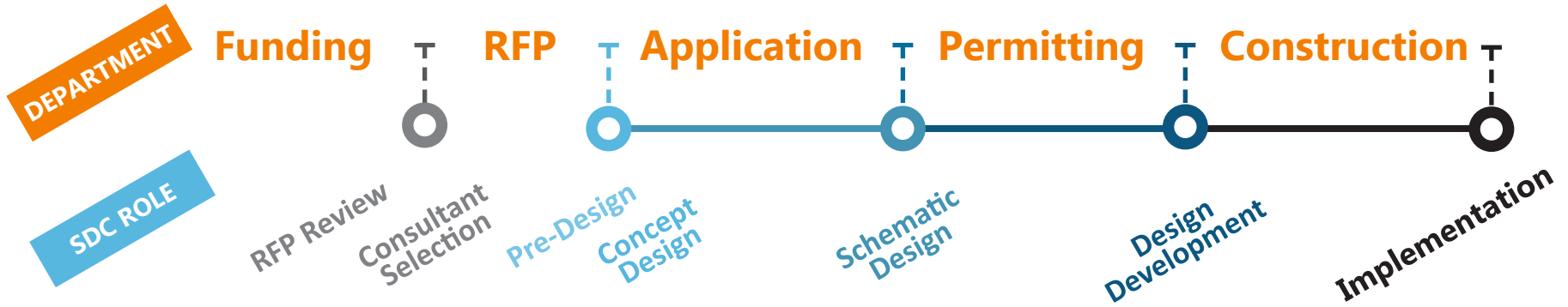
15-20 hours per month



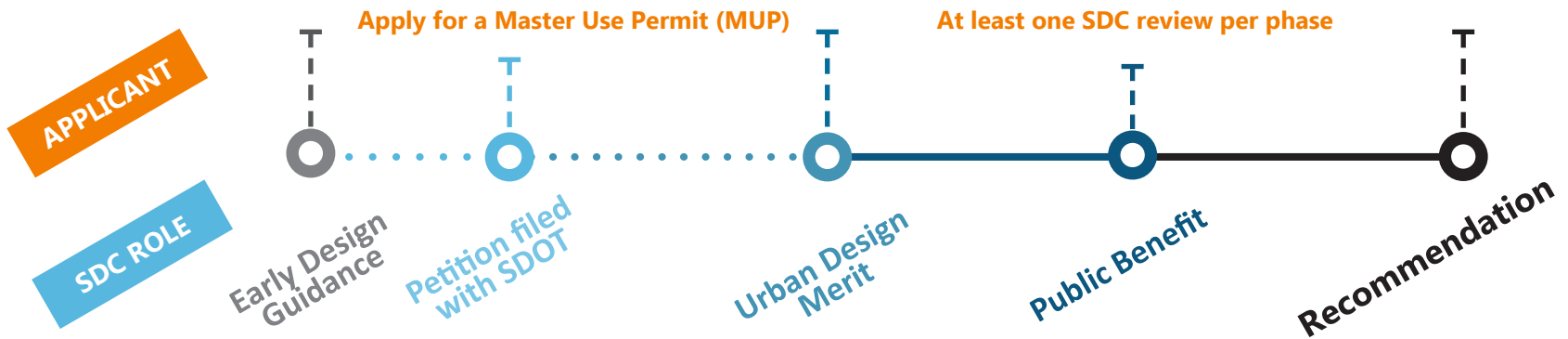
Hourly compensation

OVERVIEW OF THE COMMISSION

Capital Improvement Program



Street & Alley Vacations and Skybridge reviews



OVERVIEW OF THE COMMISSION

2017 YEAR IN REVIEW

Downtown / SODO / CID

7 projects | \$3.35 billion

Capitol Hill / First Hill

4 projects | \$93.7 million

Ballard / Interbay / Magnolia

3 projects | \$36 million

Southeast Seattle

2 projects | \$3.95 million

South Park / Georgetown

1 project | \$20 million

South Lake Union / Queen Anne

2 projects | \$662.5 million

North Seattle

3 projects | \$27.1 million

U-District

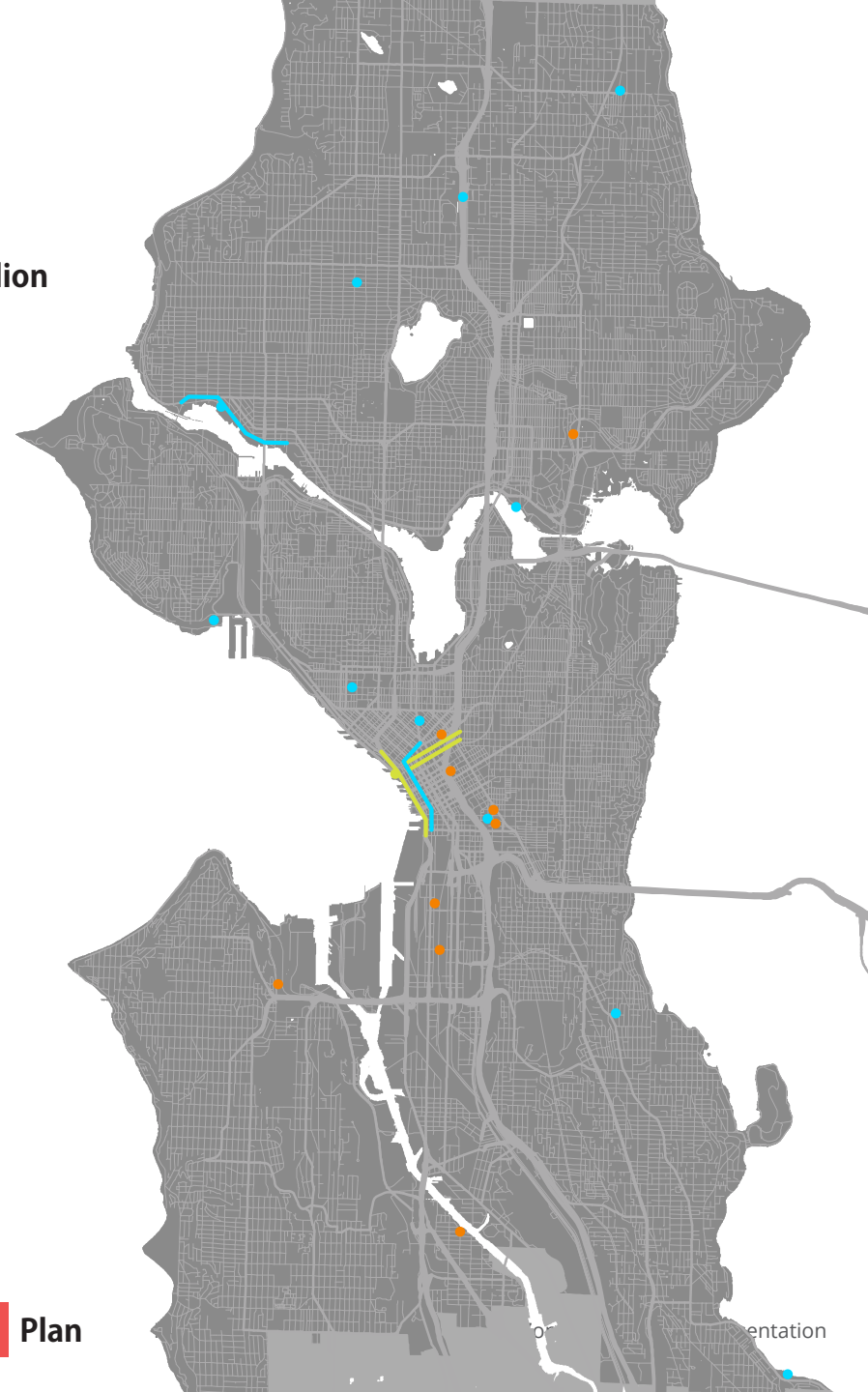
2 projects | \$36.3 million

West Seattle

1 project | \$225,000

Citywide

3 projects



CIP

ROW

Major Project

Plan

2017 YEAR IN REVIEW

Downtown / SODO / CID

Center City Connector

One Center City

Pike Pine Renaissance Plan

Seattle Arena

Seattle Waterfront

South Lander St. Bridge

WSCC Expansion

Capitol Hill / First Hill

1101 8th Ave Alley Vacation

Yesler Park

Yesler Terrace Pocket Park

Yesler Terrace Pocket Park II

Ballard / Interbay / Magnolia

Ballard Pump Station

Burke-Gilman Trail 'Missing Link'

Smith Cove Park

Southeast Seattle

North Rainier Park Development

Taylor Creek Culvert Replacement Project

South Park / Georgetown

7th Ave S Street Vacation

South Lake Union / Queen Anne

Seattle Center Arena

Westlake & Lenora Park

North Seattle

Greenwood-Phinney Park Development

Lake City Park Development

Northgate Pedestrian Bridge

U-District

Portage Bay Park

Trailside Vacation

West Seattle

29th and City View St. Vacation

Citywide

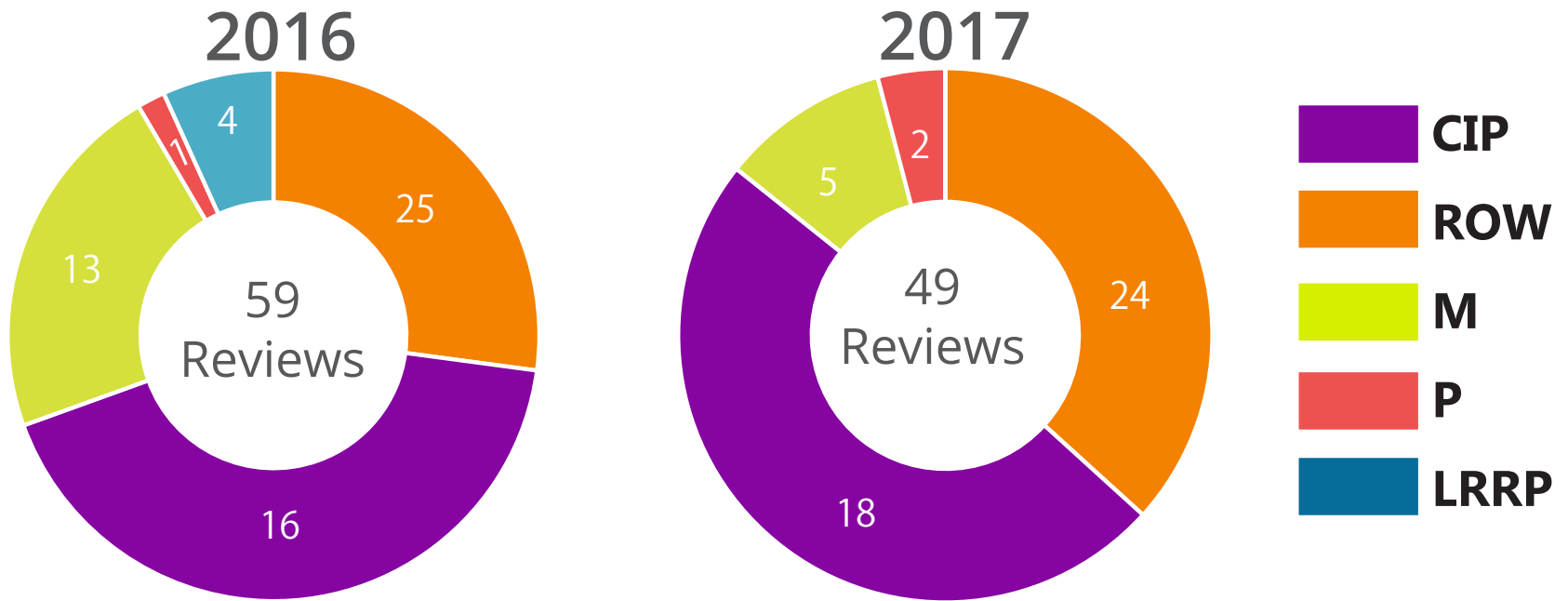
Shared Mobility Hubs

ST3 Briefing

SPU Art Masterplan

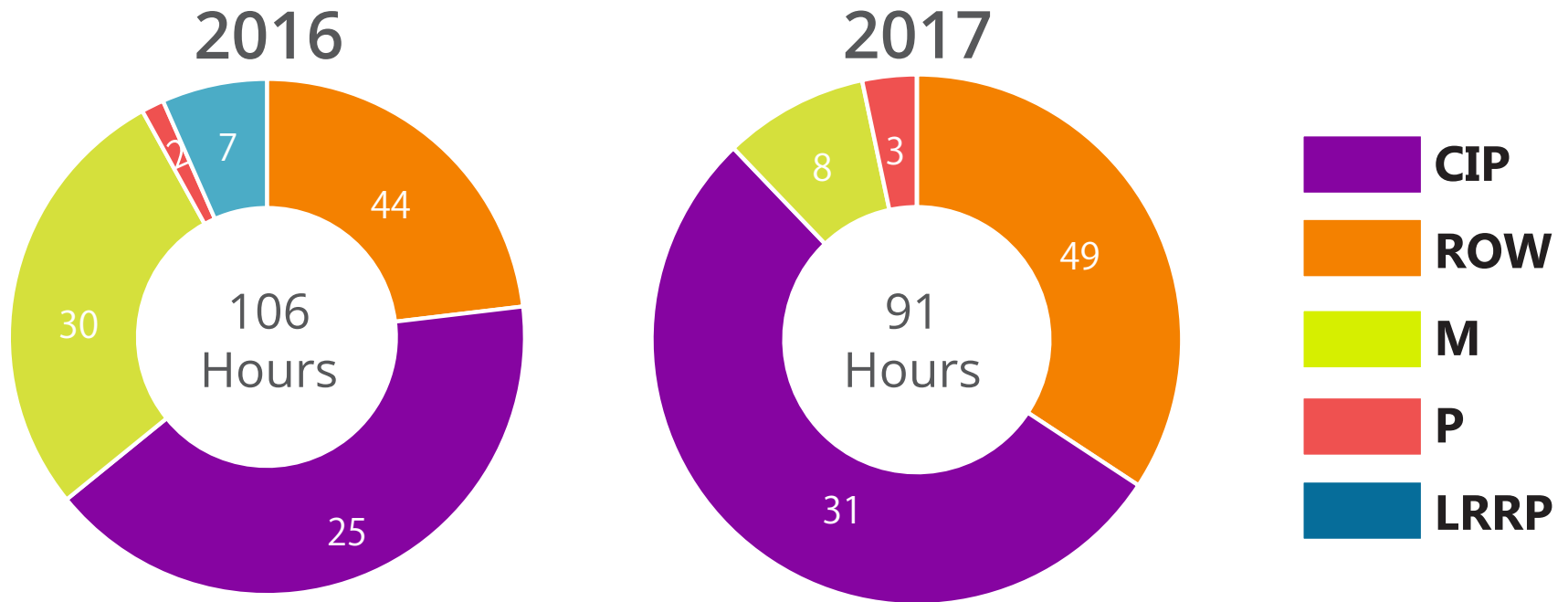
2017 YEAR IN REVIEW

Number of reviews by project type



2017 YEAR IN REVIEW

Hours by project type



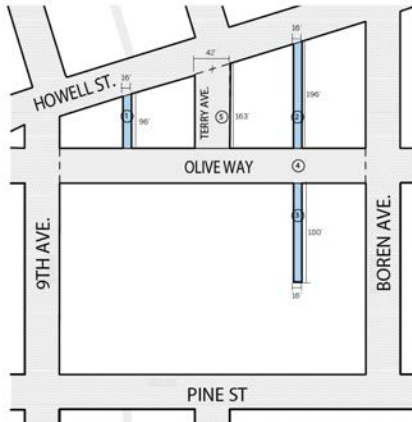
2017 Highlights

- Washington State Convention Center Expansion
- Waterfront Seattle
- Seattle Center Arena
- Greenwood-Phinney Park Development
- Design Excellence Awards

2017 Highlights

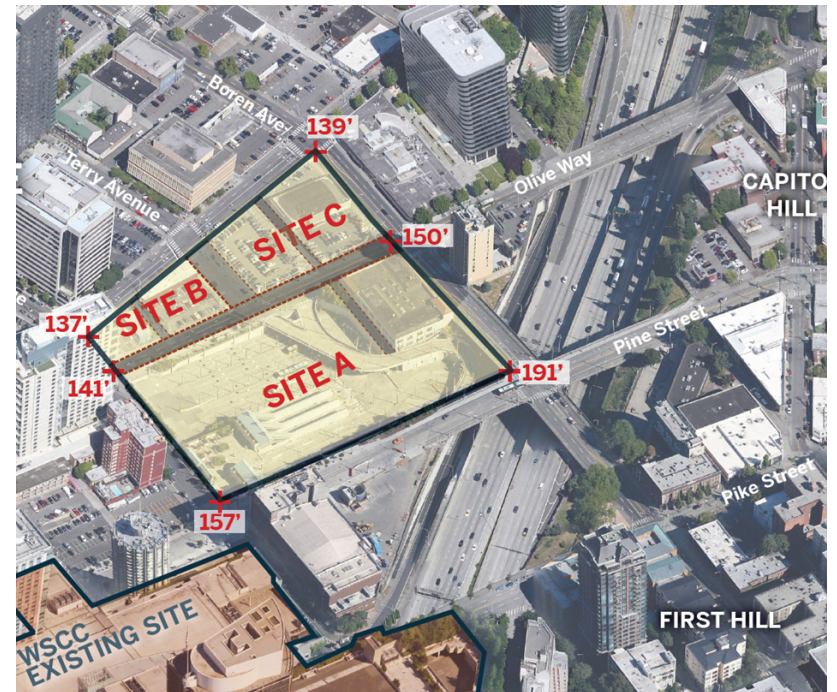
Washington State Convention Center Expansion

PROPOSED VACATIONS



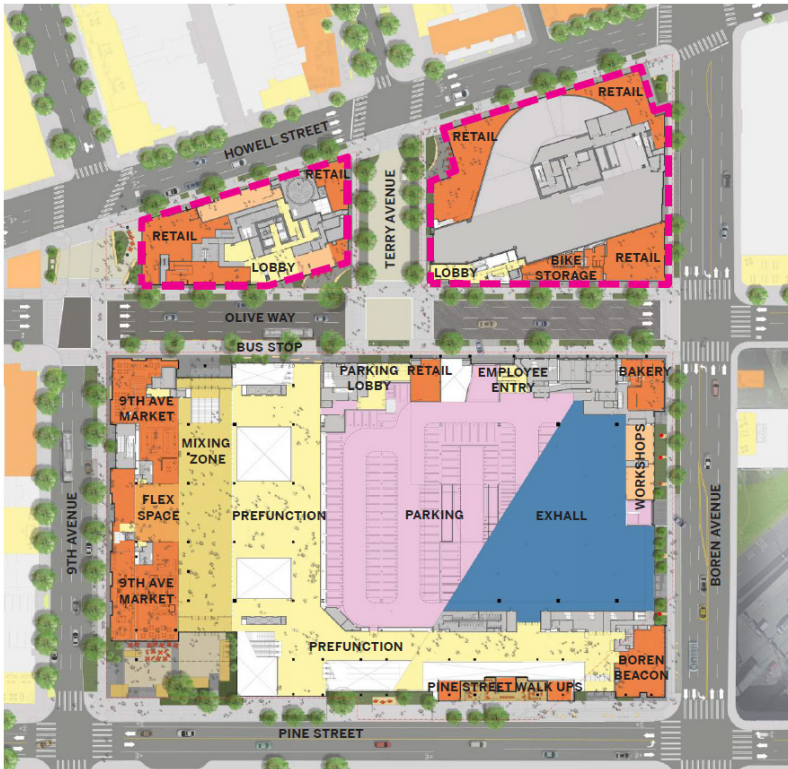
 FULL VACATION
 SUBTERRANEAN VACATION

- ① BLOCK 33 - MID BLOCK ALLEY (MUP PROJECT # 3018096)
1,601 SQ. FT.
- ② BLOCK 43 - MID BLOCK ALLEY (MUP PROJECT # 3020177)
3,186 SQ. FT.
- ③ BLOCK 44 - MID BLOCK ALLEY SEGMENT (MUP PROJECT 3020177)
2,879 SQ. FT.
- ④ OLIVE WAY (MUP PROJECT # 3020176, 3018096, AND 3020177)
38,109 SQ. FT.
- ⑤ TERRY AVE (MUP PROJECT # 3020176 AND 3018096)
9,874 SQ. FT.

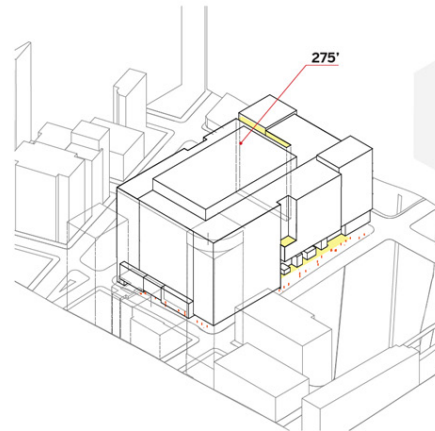


2017 Highlights

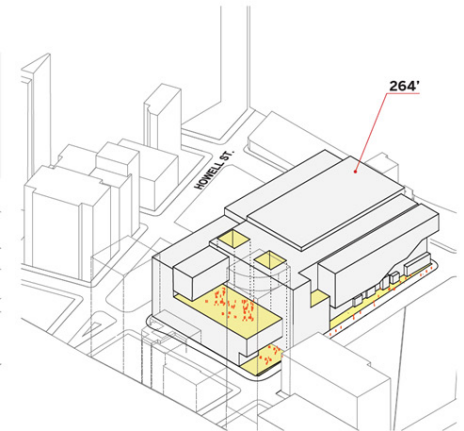
Washington State Convention Center Expansion



WITHOUT VACATIONS

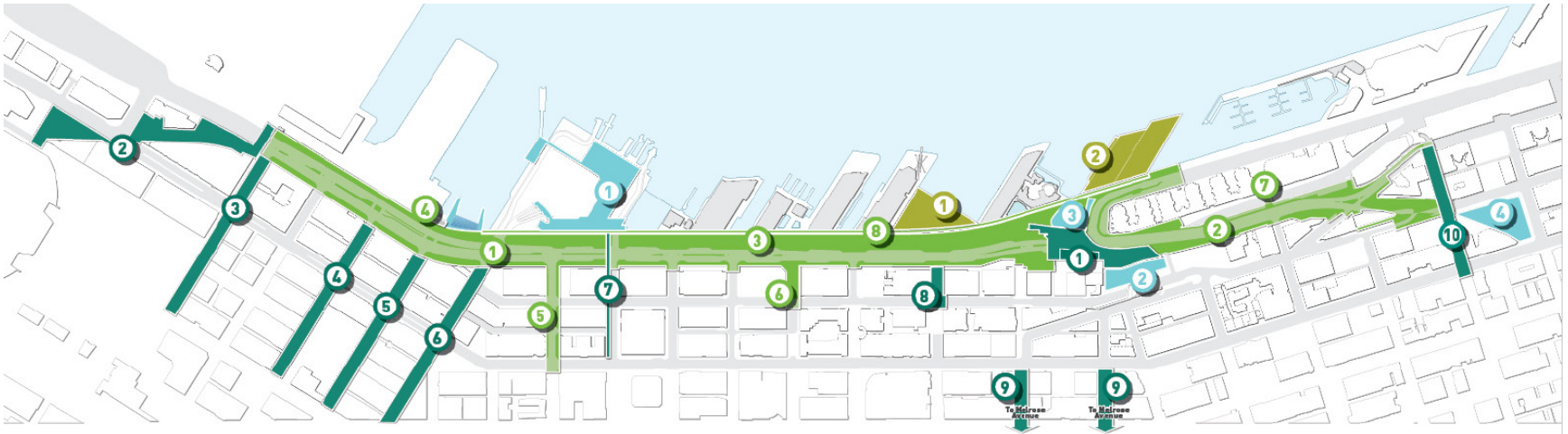


WITH VACATIONS



2017 Highlights

Waterfront Seattle



MAIN CORRIDOR	EAST/WEST CONNECTIONS	PUBLIC PIERS	PARTNER PROJECTS
① ALASKAN WAY (KING TO PIKE ST.)	① OVERLOOK WALK	① WATERFRONT PARK REBUILD	① COLMAN DOCK TERMINAL REPLACEMENT (WA STATE FERRIES)
② ELLIOTT WAY (PIKE TO BELL ST.)	② RAILROAD WAY	② PIER 62/63 PHASE 1 REBUILD	② MARKETFRONT (PIKE PLACE MARKET)
③ WATERFRONT PROMENADE	③ KING ST.		③ OCEAN PAVILION (SEATTLE AQUARIUM SOCIETY)
④ WASHINGTON STREET BOAT LANDING	④ MAIN ST.		④ PORTAL PARK (SEATTLE PARKS)
⑤ COLUMBIA ST.	⑤ WASHINGTON ST.		
⑥ SENECA ST.	⑥ YESLER WAY		
⑦ LENORA ST. BRIDGE RETROFIT	⑦ MARION ST. BRIDGE REPLACEMENT		
⑧ ELLIOTT BAY SEAWALL REPLACEMENT (SEATTLE DOT)	⑧ UNION ST.		
	⑨ PIKE AND PINE STS (PIKE PLACE TO MELROSE AVENUE)		
	⑩ BELL ST.		

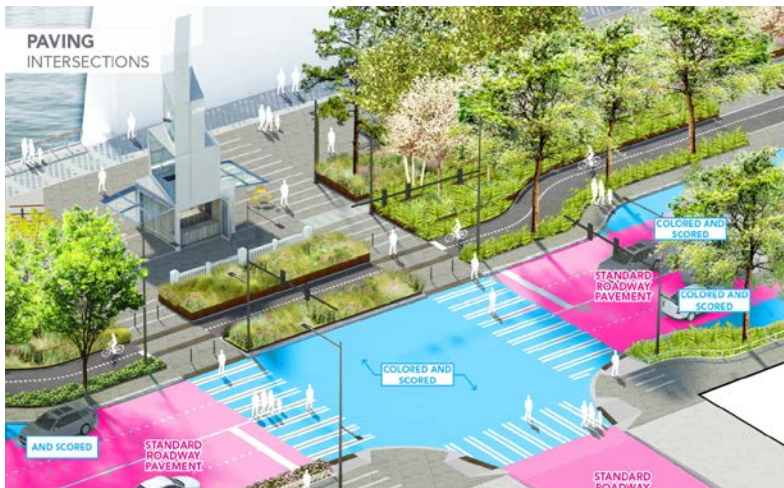
2017 Highlights

Waterfront Seattle

CONTINUOUS ELEMENTS
PUBLIC REALM



- LEGEND**
- PAVING
 - PLANTING
 - FURNISHING
 - LIGHTING



2017 Highlights

Waterfront Seattle

HISTORIC DISTRICT,
MULTI-CULTURAL +
WATER ACCESS

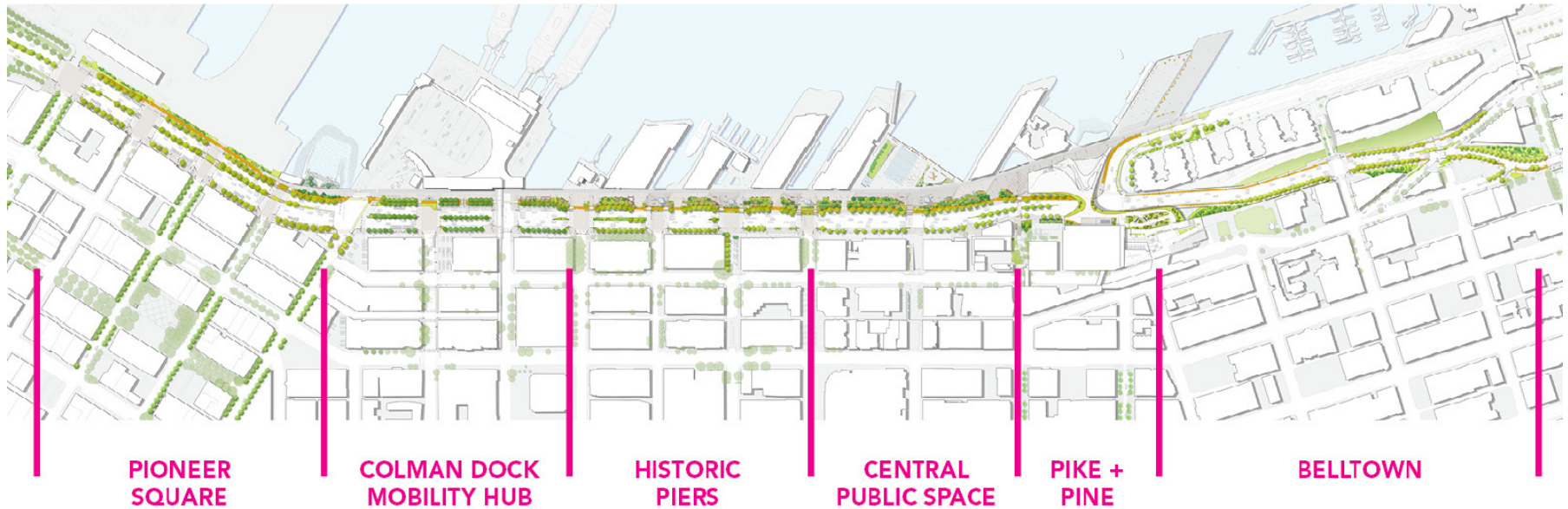
MULTI-MODAL,
URBANITY +
ORIENTATION

COMMERCIAL,
PIER ACCESS +
GARDENS

CIVIC,
OPEN VIEWS +
ACCESS TO WATER'S
EDGE

CONNECTION TO
PPM +
AQUARIUM

BLUFF +
RESIDENTIAL
NEIGHBORHOOD



2017 Highlights

Seattle Center Arena

SITE VIEWS
SOUTHWEST CORNER

04 PROPOSED SITE STRATEGIES



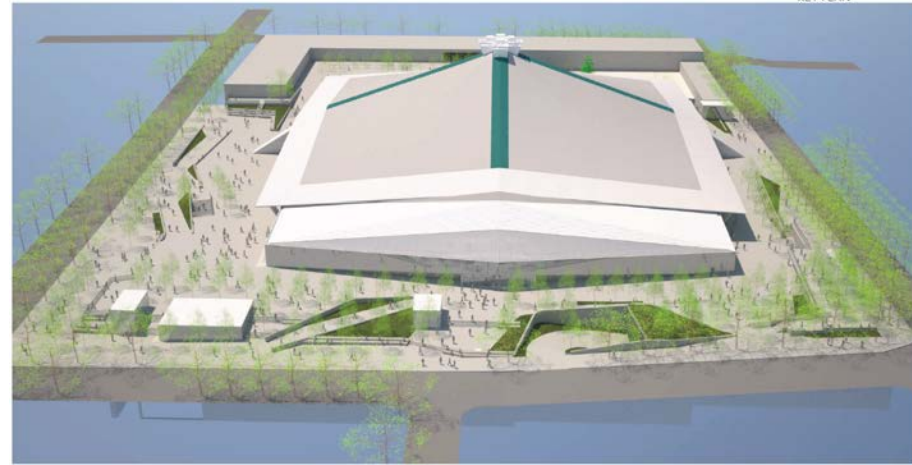
SEATTLE CENTER ARENA |

Preliminary Conceptual Design

SDO Project No.: 3029061 | Jan 18, 2018 | 61

SITE VIEWS
SOUTH PLAZA

04 PROPOSED SITE STRATEGIES



SEATTLE CENTER ARENA |

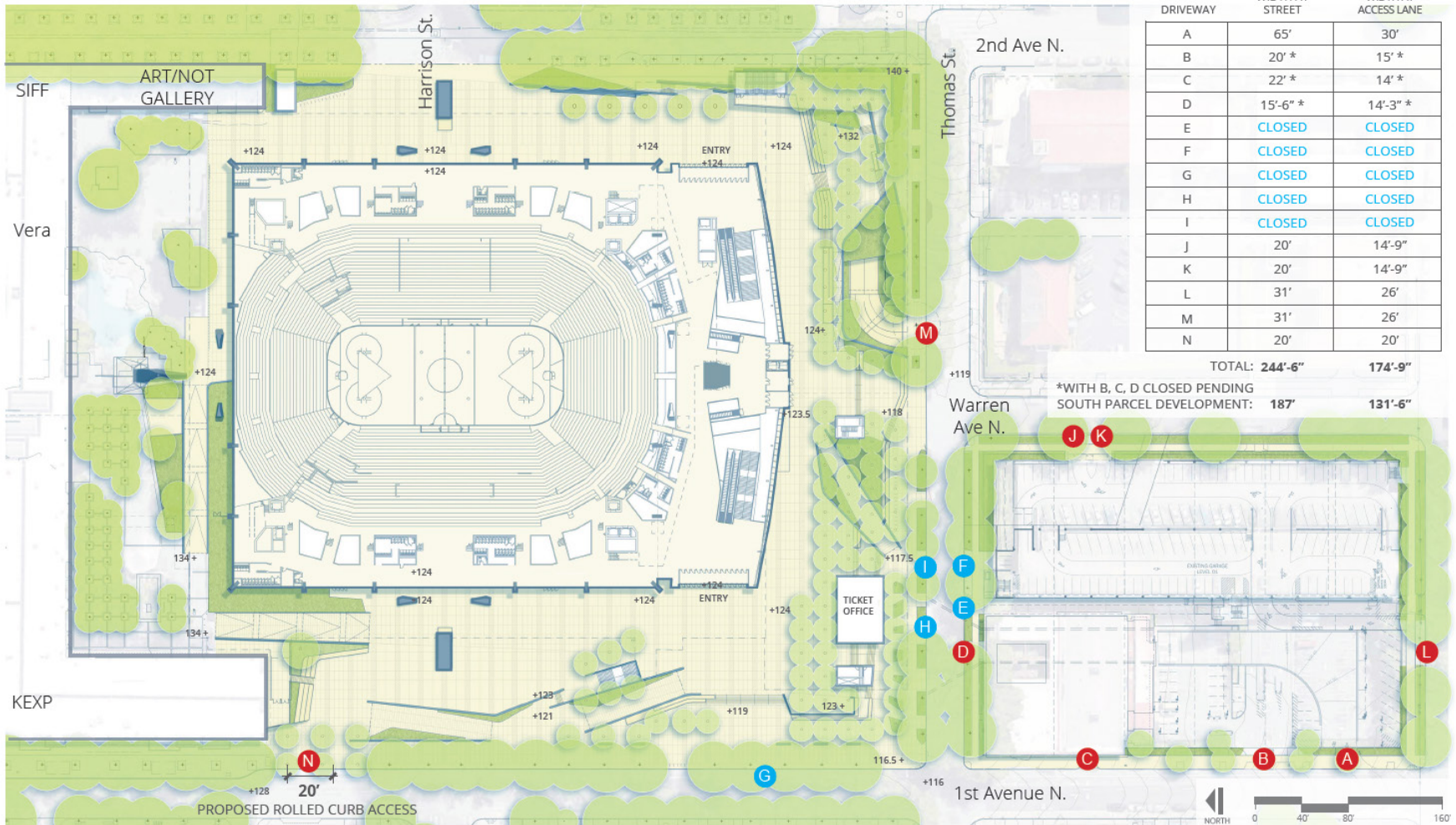
Preliminary Conceptual Design

SDO Project No.: 3029061 | Jan 18, 2018 | 62

2017 Highlights

Seattle Center Arena

PROPOSED CONDITIONS



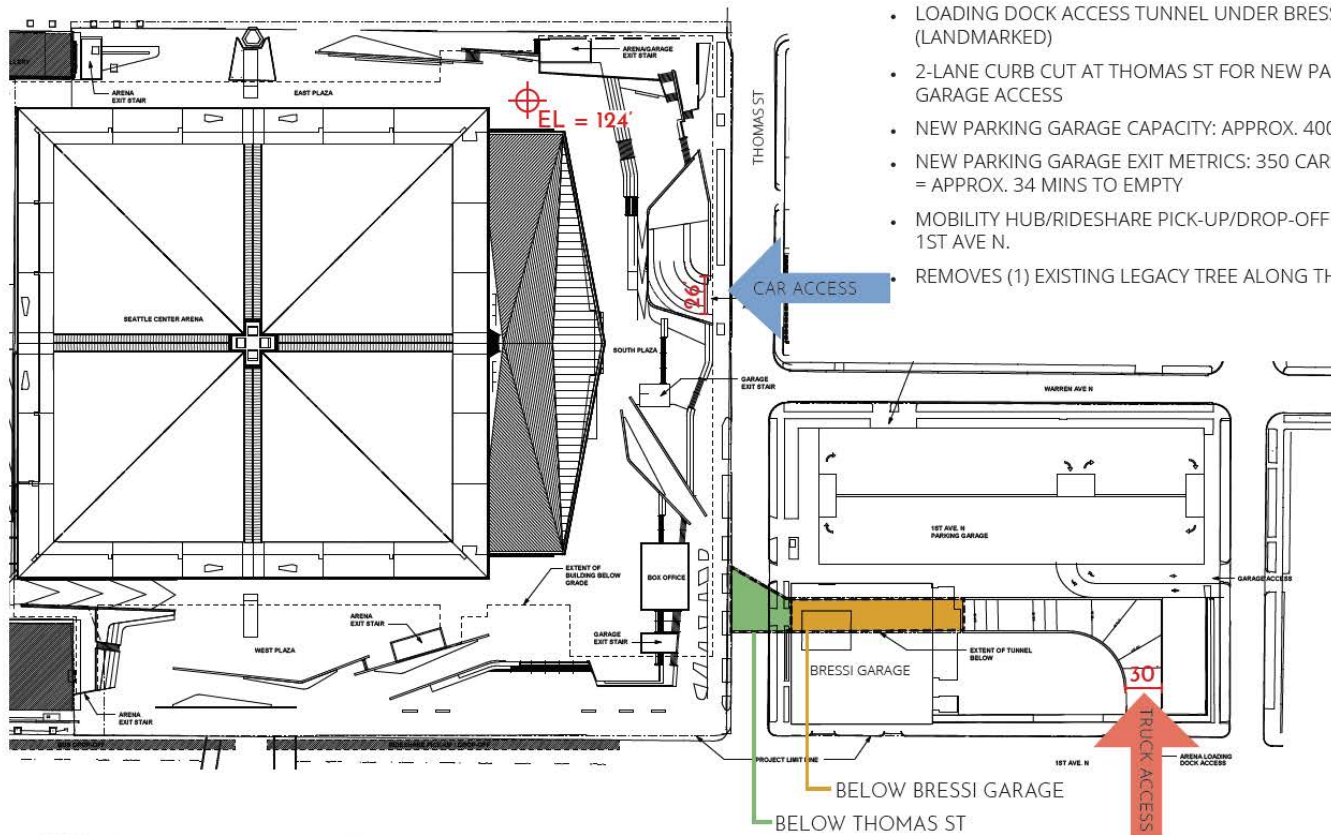
2017 Highlights

Seattle Center Arena

TRUCK & VEHICLE ACCESS

PREFERRED CONCEPT SCHEME

U4 PROPOSED SITE STRATEGIES



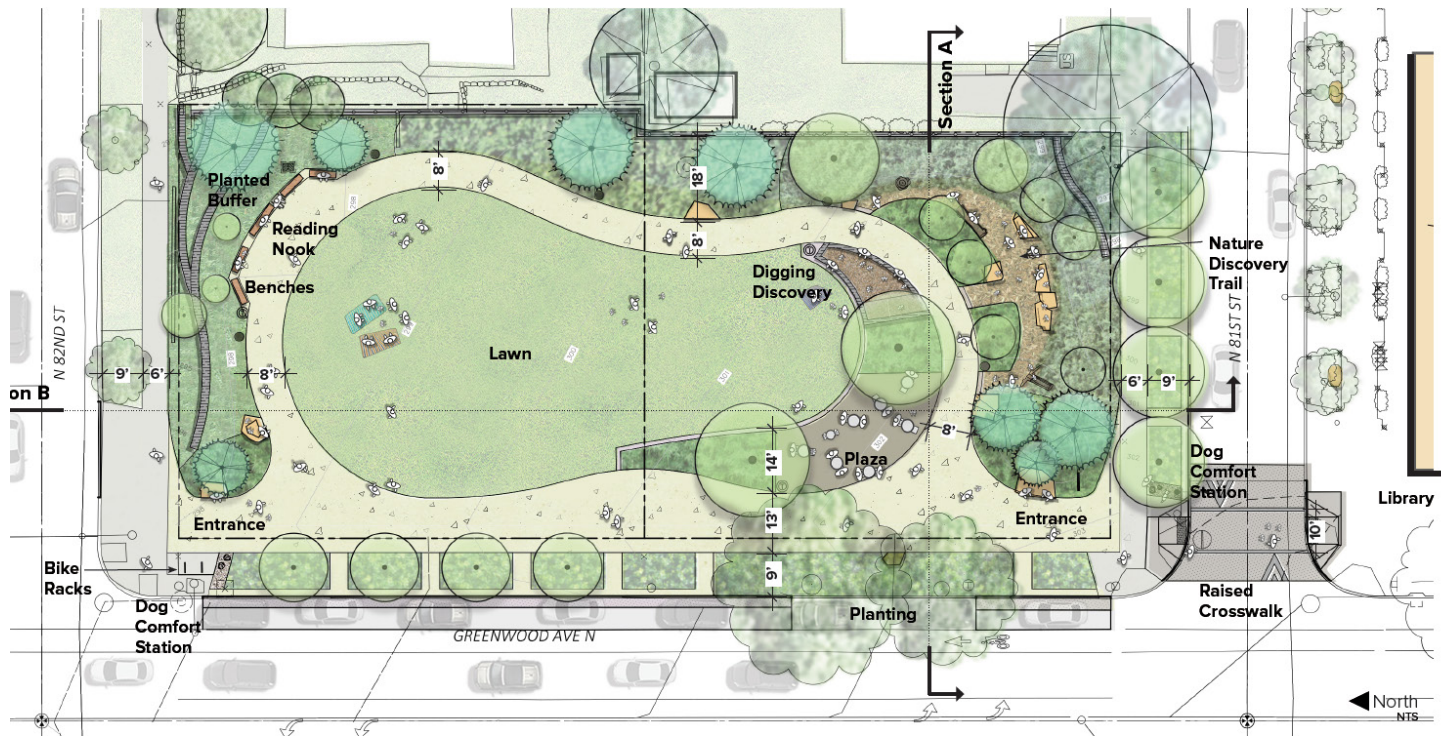
PREFERRED CONCEPT SCHEME:

- LOADING DOCK ACCESS TUNNEL UNDER BRESSI GARAGE (LANDMARKED)
- 2-LANE CURB CUT AT THOMAS ST FOR NEW PARKING GARAGE ACCESS
- NEW PARKING GARAGE CAPACITY: APPROX. 400 CARS
- NEW PARKING GARAGE EXIT METRICS: 350 CARS/LANE/HOUR = APPROX. 34 MINS TO EMPTY
- MOBILITY HUB/RIDESHARE PICK-UP/DROP-OFF LANE ALONG 1ST AVE N.
- REMOVES (1) EXISTING LEGACY TREE ALONG THOMAS ST.

2017 Highlights

Greenwood-Phinney Park Development

Illustrative Site Plan



2017 Highlights

Greenwood-Phinney Park Development

Conceptual Design Phase 1 + 2

Conceptual Design

- Conceptual Design will include the two parcels and the 3 street's rights-of-way including sidewalk, planting strips, curbs and the raised crosswalk to the library.
- Assumed total construction budget for concept design is \$1,073,285



2017 Highlights

Greenwood-Phinney Park Development

Demographics, Social Justice and Public Outreach

City of Seattle Race and Social Justice Initiative toolkit was created to assess the accessibility of projects/programs and eliminate barriers to access.

SITE	TOTAL POPULATION	% of POPULATION < 18	PERCENTAGE of UNDERSERVED POPULATIONS ¹	ELEMENTARY SCHOOL CHILDREN RECEIVING FREE OR REDUCED LUNCH	RESIDENTS BELOW POVERTY LEVEL	CRIME RISK SCORE ²	HEALTH ³ (Childhood Obesity)	LOW FOOD ACCESS	PUBLIC TRANSPORTATION (Method used to commute to work)	YEAR ACQUIRED	WITHIN URBAN VILLAGE BOUNDARY	DESIGNATED 2011 OPEN SPACES GAP AREA	SCORE
SEATTLE	624,681	15.4% / SCORE	33.3% / SCORE	38% / SCORE	13.6% / SCORE	232 / SCORE	13% / SCORE	YES = 1 NO = -1	19.2% / SCORE	1 point per year owned	YES = 1 NO = -1	YES = 1 NO = -1	
Greenwood/Phinney RUV	47,019	13.8% / -1	21.5% / -1	26% / -1	8% / -1	286 / 1	12.2% / -1	NO / -1	20.3% / 1	2013 / 2	YES / 1	YES / 1	0

GREENWOOD ELEMENTARY DEMOGRAPHICS

- 62% of students are white.
- 38% are students of color.
- No students are identified as English language learners.
- 17% in special education programs.
- 22% receive free or reduced lunch

MEDIA OUTLETS

- Phinneywood Blog
- NextDoor
- Seattle Parks and Recreation Ethnic Media List
- Facebook
- Twitter

COMMUNITY GROUPS play a critical role as trusted community resources for public outreach and dialogue.

- Broadview Branch Library
- Greenwood Community Council
- Greenwood Elementary School
- Greenwood Senior Center
- Greenwood Branch Library:
- Lictonwood Seattle Housing Authority
- Phinney Neighborhood Council
- Phinney Neighborhood Association
- St. John's Elementary School
- Family Works Greenwood Food Resource Center

PUBLIC INVOLVEMENT GOALS: Materials and outreach strategies that are accessible and inclusive of all members of the Greenwood community.

PROCESS TO DATE

CHALKBOARD IN 3 LANGUAGES ASKED FOR DREAMS OF THE PARK On the site, multiple chalkboards created early buzz and allowed input from residents with limited English as well as both children and adults.

PUBLIC MEETING 1 AT GREENWOOD CAR SHOW The first public meeting was held at the popular Greenwood Car Show, and featured materials that encourage input from both children and adults.

PINTEREST A focus on images reduced barriers to access for people with limited English resulted in limited success, but some images were later on boards at the 1st public meeting where children could point to their favorite images.

SURVEYMONKEY SUEVEY provided access to people unable to attend meetings. The survey was successful with over 525 responses.

STAKEHOLDER MEETING additional support was garnered from the community and initial thoughts about the park shared.

PHONE CONVERSATIONS AND EMAILS include common themes of community gathers, play and safety.

2017 Highlights

Greenwood-Phinney Park Development

3 Concept Alternatives at a Glance

Option 1



- Curvilinear forms create a more traditional park form with a naturalistic feel in contrast to the orthogonal surroundings.
- Sculpted, sloped planting beds between the sidewalk and the park create a spatial separation for the gently sloping lawn and play area for a more level pathway through the park. The eastern buffer planting follows the pattern of the natural grade, resulting in lower retaining walls.
- Natural play trail meanders along the eastern edge of the site among native plantings and seating.
- The street-side overlook with movable tables and chairs offers a convenient spot to linger, read, enjoy views into the park, and meet your neighbors.
- Seating surrounds the central lawn at the edges of the path, lawn and nature play area.
- Within the park, native plant species offer an open space which reflects the original Pacific Northwest lowland forest. The lawn could be an eco-turf.

Option 2



- The orthogonal design
- The planting areas at the sidewalk follow the existing slope of the street, and a steeper accessible entry from the north leads to a more level lawn and seating area to accommodate community gatherings. The play area occupies a higher position with a sloped accessible path down to the lawn.
- Play area is separated from other areas by planting beds and seat walls, and contained with seatwalls and guardrails integrated into the surrounding planting areas.
- Stationary tables with seating on the sidewalk provide views of the park, and a bench near the library crossing accommodates passerby from multiple directions. A lending library at the northwest corner allows the community to donate materials for common use.
- Seating is offered throughout the park at the edges of the path, lawn and play area. Gathering occurs in distinct outdoor "rooms" at centered around play and the lawn.
- Within the park, planting is a combination of native and adaptive species that are drought tolerant.

Option 3



- Straight seat walls create a more geometric feel
- A terraced approach to grading in the north features stairs on the main path and universal access to 2 of the 3 terraces, lawn, play area and seating. Grading allows a small bioretention area in the southeast buffer planting.
- Play area is highly visible and integrated into the open lawn area but is separated from the street by seat walls and planting beds.
- Benches along the sidewalk provide resting spots along the street, but most seating and gathering areas are within the park itself.
- The terraces, with seatwalls, tables with benches, and a two long community tables with movable chairs concentrate gathering on an amphitheater-like space overlooking the lawn and play area. A canopy accommodates year-round use.
- Within the park, planting is a combination of native and adaptive species that are drought tolerant.



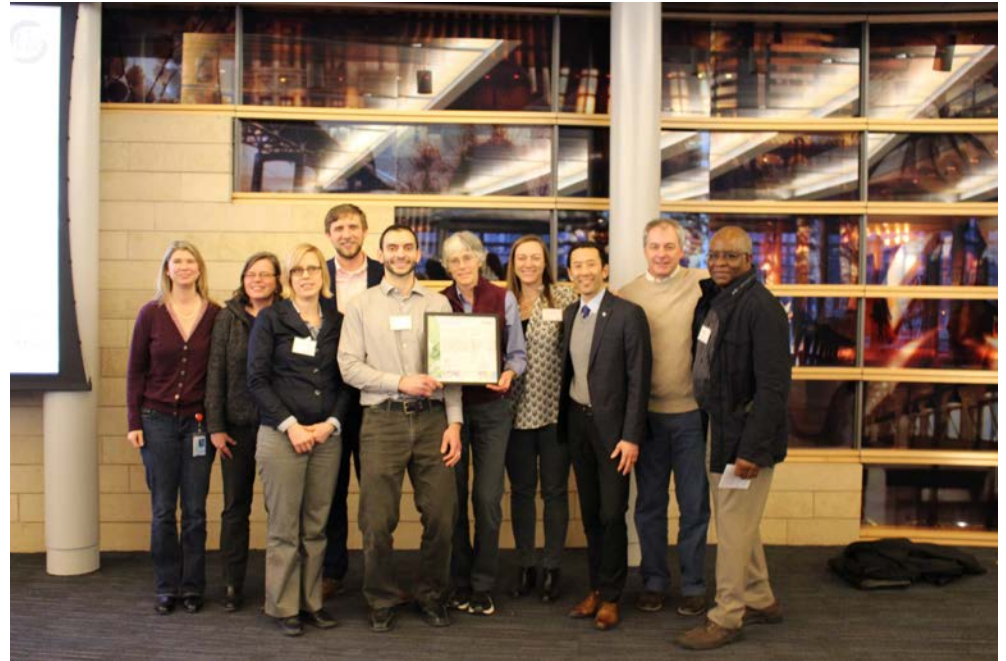
CASCADE
DESIGN
COLLABORATIVE

Greenwood Phinney Landbanked Site

2017 Highlights

Design Excellence Awards

- Held March 1, 2017
- 8th ceremony since 2001
- 29 eligible projects
 - constructed since 2015 awards
 - adopted plan or policy, completed or implemented
- Awards reflect success as measured by the Commission's mission statement:
 - Inspired Design
 - Contextual Integration
 - Innovative Sustainability
 - Social Inclusion
 - Exemplary Partnerships
 - Effective Investment
 - Impeccable Execution



2017 Highlights

Sound Transit - University of Washington Station



2017 Highlights

Fire Station 20



2017 Highlights

Mapes Creek Restoration



2017 Highlights

Bicycle Master Plan



2017 Highlights

Leaves of Remembrance



What is coming in 2018

- Update to Council vacation policies – implication for Design Commission role
- Commission report on WSCC
- Workshop – Sawhorse students
- Pivot to policies
- 50th Anniversary



Seattle
design
Commission