

Federal Affairs Update

Housing and Human Services Committee

SEATTLE
CITY HALL

Federal Landscape: Health and Human Services

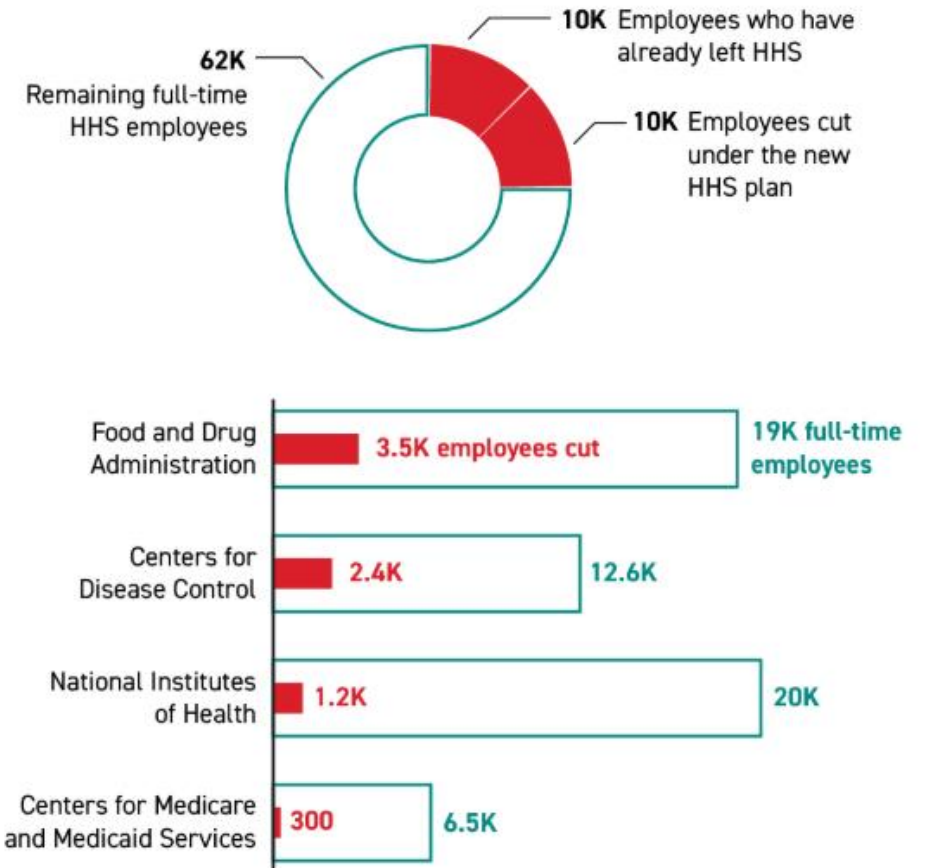
- President Trump nominated, and Congress confirmed Robert Kennedy Jr. as Secretary of Department of Health and Human Services (HHS)
- Pres. Trump announced slew of health related executive orders:
 - 1/20/25: Withdrawing the United States from the World Health Organization
 - 1/20/25: Guaranteeing the State Protection Against Invasion
 - 1/24/25: Enforcing the Hyde Amendment
 - 2/13/25: Establishing the President's Make America Healthy Again Commission
- On March 27th, the Trump Administration started campaign to eliminate roughly 25% of staff, totaling ~20,000 workers
- Congress currently aiming to pass spending bill that includes cuts to social services

Health and Human Services Cuts

- The first round of cuts started on April 1st through terminations, early retirement, and voluntary resignation offers
 - Estimated 10,000 workers have already left department
 - Included cuts across the board, particularly the Food and Drug Administration, Centers for Disease Control and Prevention, and National Institutes of Health
- The Administration is aiming to consolidate several agencies and create at least three new offices/divisions, including the Administration for a Healthy America
 - 10 of 28 current divisions are intended to be cut or consolidated

2 Staff reductions

HHS plans to reduce its overall size to about 62,000 full-time workers, down from 82,000. The Food and Drug Administration will lose 3,500 employees, though the cuts won't impact inspectors and drug, medical device or food reviewers.



HHS Region 10

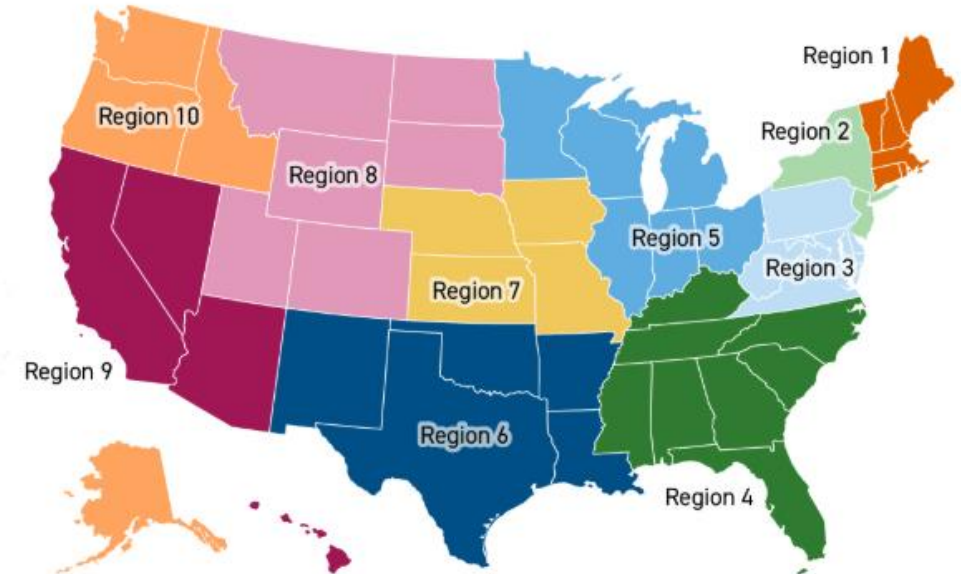
- The HHS Region 10 Office is located in Seattle and aims to address priority public health issues including immunization, health equity, and behavioral health
 - Represents Alaska, Idaho, Oregon, and 272 federally recognized tribes
- Region 10 was included in the initial round of layoffs, terminating around 200 employees
- Senator Murray, Vice Chair of Senate Health, Education, Labor and Pensions (HELP Committee) released statement:
 - *“Closing the Seattle Region 10 office will mean a drastically diminished HHS presence on the ground in our communities, no one to help seniors, families, and providers with Medicare and Medicaid issues or conduct site visits in the community, little-to-no collaboration with local and regional health leaders on emerging public health issues—and so much else..”*

3 Regional office consolidation

HHS will cut 5 of 10 regional offices around the country. Each office is based in one city within its region and serves multiple states in the same geographic area.



Region 1, for example, is based in Boston and serves Connecticut, Maine, Massachusetts, New Hampshire, Rhode Island and Vermont. The department has not yet announced which regional offices will be closed.



Note: Region 2 serves the Virgin Islands and Puerto Rico. Region 9 serves American Samoa, Northern Mariana Islands, Federated States of Micronesia, Guam, Marshall Islands and Republic of Palau.

Local Impacts

- Coordination and communication
- Issue-based misalignment
 - Medicaid and Medicare
 - Food Security
 - Medical and Infectious Disease Research
 - Immigration
- Potential Programmatic Concerns
 - Supplemental Nutrition Assistance Program (SNAP)
 - Low Income Home Energy Assistance Program (LIHEAP)
 - Head Start
 - National Institutes of Health (NIH) Grants

Questions?

SEATTLE
CITY HALL