

Seattle City Council  
Parks, Seattle Center, Libraries & Waterfront  
Committee

*September 20, 2017*

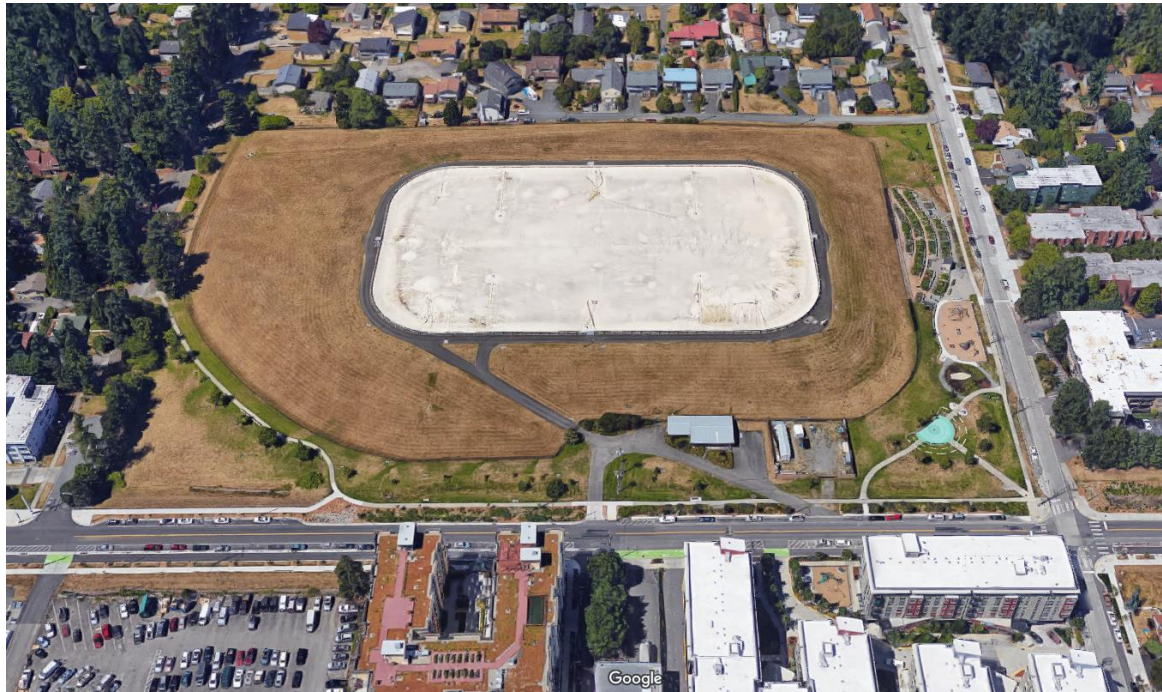
Bitter Lake Reservoir Covering Status

# Agenda

- **Background**
- **Status Update**

# Bitter Lake Reservoir

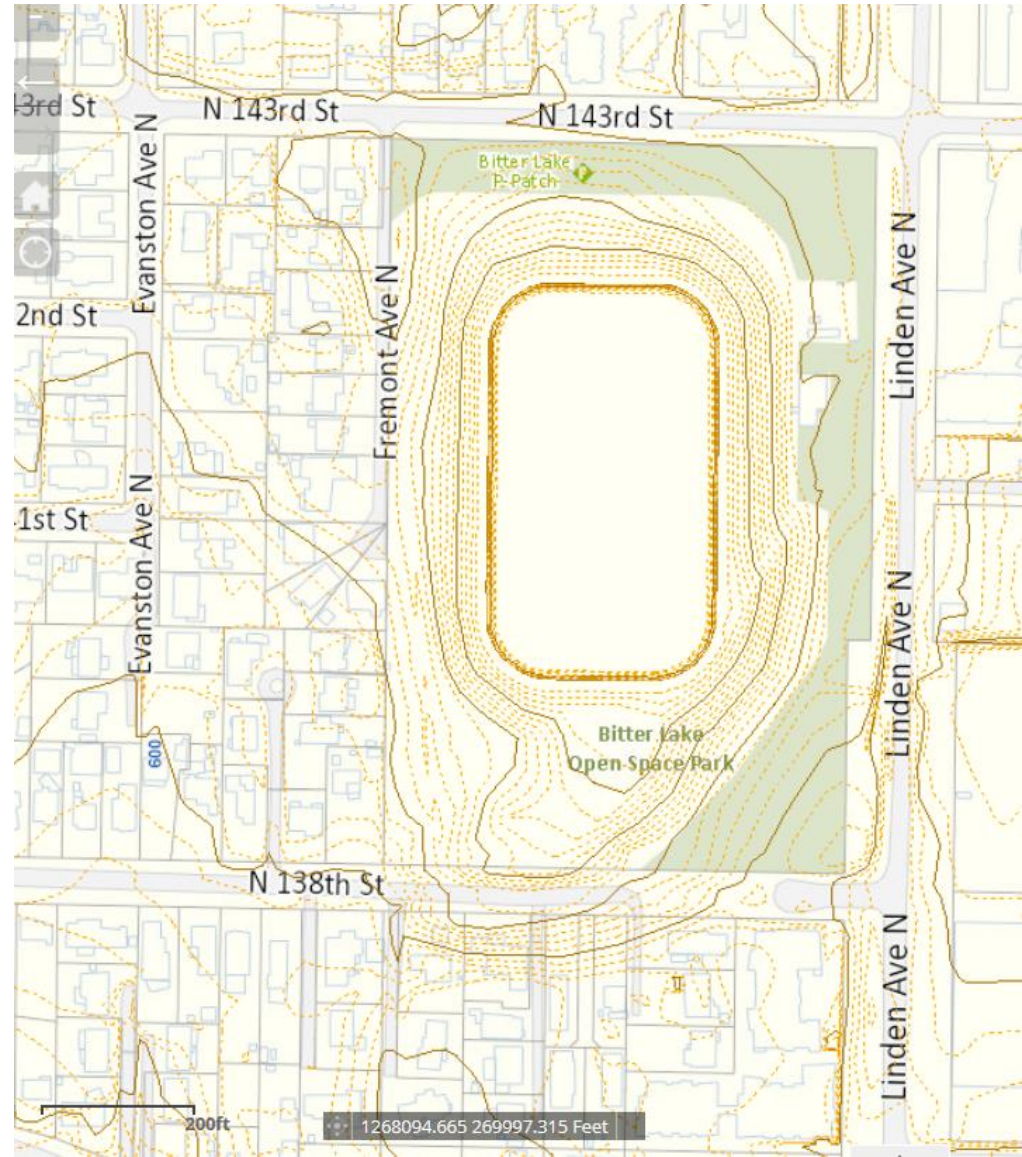
- **21.3 million gallons of storage**
  - Operating and emergency water storage for surrounding areas
- **Floating cover is in relatively good condition**
- **Construction projected 2022-23**



# Bitter Lake Reservoir



- **Surrounding elevation at streets ~480 feet**
- **Elevation at top of reservoir ~510 feet**



# Constraints

- **Need to keep top elevation similar to existing for water pressure zone management**
- **Need to keep total volume about the same**
- **Construction not needed until near the end of the floating cover's life**
- **Stormwater detention improvements**



# Exploring Site Options

- **Retained services of landscape architect, JA Brennan & Assoc.**
  - Early feasibility study
  - Exploring potential open space/recreational uses for cover replacement options
- **Close coordination with Seattle Parks and Recreation**



# Site Options Status

- **Completed site inventory, analysis, data collection**
- **Completed program definition/vision development**
- **Starting site options development**
- **Site options refinement to follow**
- **Report back to Council Q1 2018**



# Future Steps

- **2019-2021: Design, including public involvement**
- **2022-2024: Construction**



# Questions?