

A group of children wearing helmets are riding bicycles on a paved street lined with green trees. The scene is bright and sunny, suggesting a pleasant day for cycling.

# Bicycle Master Plan

2015-2019 Implementation Plan  
2014 Progress Report

Council Transportation Committee  
Scott Kubly and Kristen Simpson  
April 14, 2015

# Our mission, vision, and core values

**Mission:** deliver a high-quality transportation system for Seattle

**Vision:** connected people, places, and products

Committed to **5 core values** to create a city that is:

- Safe
- Interconnected
- Affordable
- Vibrant
- Innovative



# Presentation overview

- 2015 – 2019 BMP Implementation Plan
- Project outreach
- 2014 BMP Progress Report
- Questions



# BMP Implementation Plan

- Five-year implementation plan is intended to:
  - Serve as an accountability and reporting tool
  - Provide predictability for stakeholders by including a multi-year project list
  - Guide future budget requests
- Includes strategies and actions identified in the plan as well as project lists
- Annual updates (March of each year) for review by SBAB and City Council
- Progress reports to SBAB and City Council on status of projects, programs and actions annually (with six-month interim updates)

# 2015 – 2019 Implementation Plan

Changes from October 2014 Plan include:

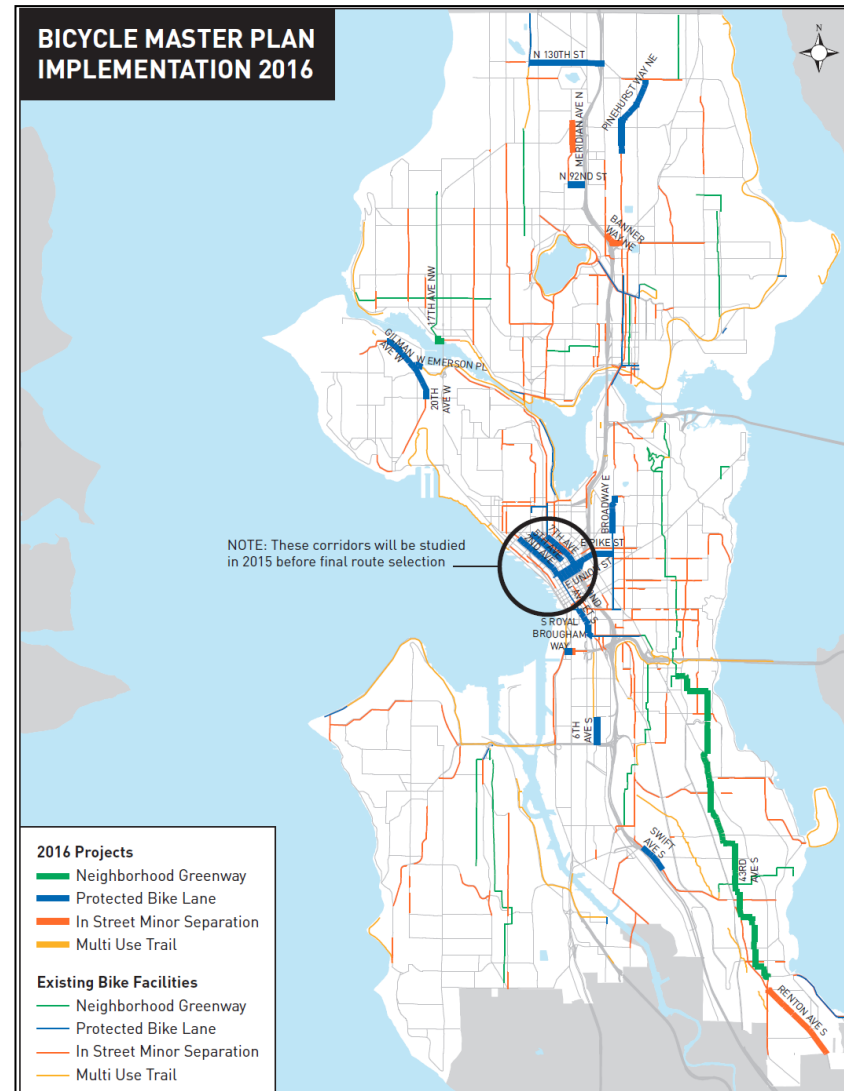
- Several new projects added
- Updated funding table
- Status column added to strategies and programs work plan
- Active Transportation program lead hired



# 2015 – 2019 projects added

Newly added projects include:

- Renton Ave S
- Roosevelt Ave NE and University Bridge
- Pinehurst Way NE (project length extended)





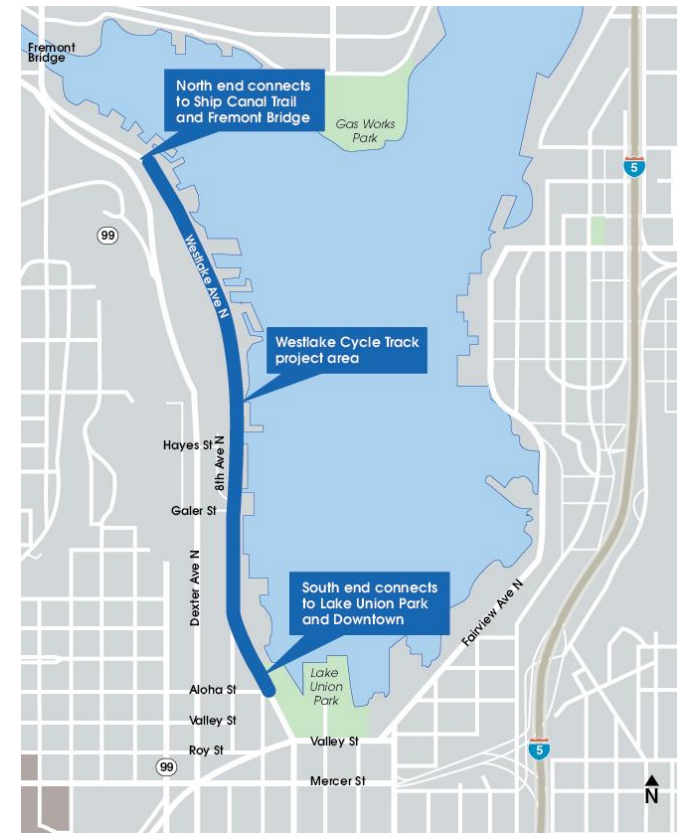
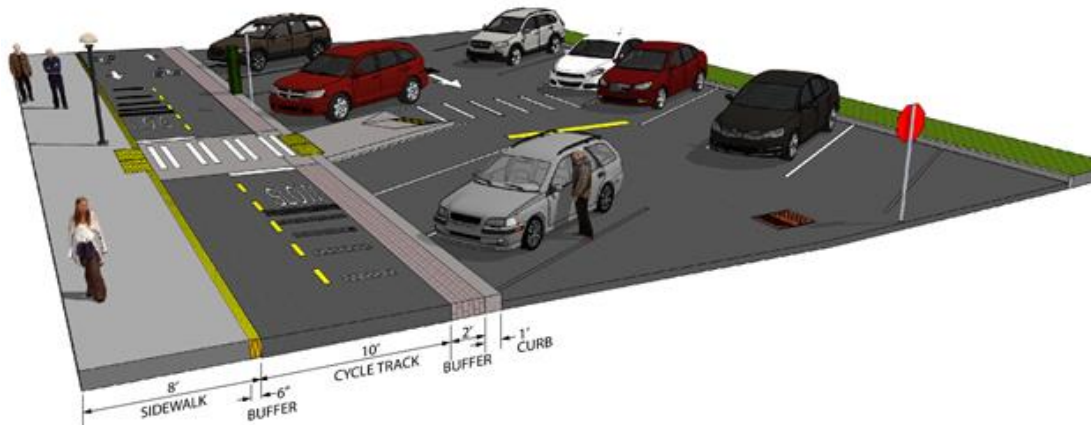
# 2015 project - Center City Network

- Protected bicycle lanes to and through downtown
- Conceptual design for downtown network
- Design for highest priority segments



# 2015 project – Westlake Cycle Track

- Design nearly complete
- Final Design Advisory Committee
- Construction in Fall 2015





# 2015 – 2019 program summary

Program activities include:

- Education and encouragement
- Bicycle parking
- Trails upgrade plan
- Safety reviews and spot improvements

Sample Programs	2015	2016	2017	2018	2019	5-year total
Education (schools reached)	12	14	16	18	20	80
Bike racks	225	200	175	150	125	875
Bike corrals	15	20	25	30	35	125
Wayfinding (miles)	25	25	25	25	25	25
Spot improvements	10	10	10	10	10	50

# 2015-2019 education and encouragement

- Bike commute workshops (March – May)
- Bike to Work Month promotions
- Seattle employer bike summit
- BikeLife Magazine
- Active transportation program



# Outreach considerations

What is the outreach goal? What are we asking of the community? Are we...



**inform**

Educate about the rationale behind a project or decision.

**consult**

Inform and ask for feedback.

**collaborate**

Work with public to identify problems, generate solutions, get feedback on recommendations.





inform

consult

collaborate

small

- Play street
- Parklet
- Sidewalk repair
- Curb ramp
- Bus bulb
- Bike rack

medium

- Block of new sidewalk
- Neighborhood Street Fund
- Safe Routes to School
- Transit spot improvements
- Summer Sts
- Nhood parking

large

- Capital projects
- Major projects
- Construction hub coordination
- Greenways
- Madison BRT
- Protected bike lanes
- Safety corridors
- Modal plans
- MM corridors

# Baseline for all\* projects/programs

1. Inclusive public involvement plan
2. Key activities
  - Up-to-date website
  - Social media posts (blog, FB, Twitter)
  - Fact sheet/brochure
  - Mailings, fliers, doorhangers (notification)
  - Project signage
  - Photos



\* Some exceptions for ongoing, citywide maintenance programs. E.g. pothole program has webpage, but doesn't necessarily warrant public involvement plan or notification. 13

# 2014 BMP progress report

- Bridging the Gap summary
- Project highlights
- Program highlights
- Ridership data





# 2014 Bridging the Gap

Deliverable	2014 Goal	2014 Actual
Neighborhood greenways	4 miles	4 miles
Bike lanes and sharrows	6 miles	6.3 miles
Bike parking	500 spaces	523 spaces
Bike route signs	25 miles	25.2 miles
Bike facility maintenance	60 miles	60.5 miles
Trail improvements	10 locations	10 locations
Trail inspection	40 miles	40 miles

# 2014 projects – protected bike lanes





# 2014 projects – protected bike lanes



Broadway



Linden Avenue North



# 2014 projects – greenways

Four miles of new Greenways including:

- Olympic Hills
- Wedgwood
- U-District
- Madison Park
- Jackson Place



# 2014 bike parking and wayfinding

- Total of 523 new parking spaces
  - 18 corrals = 152 spaces
  - Balance in standard racks
- 25 miles of wayfinding signs



# 2014 education and encouragement

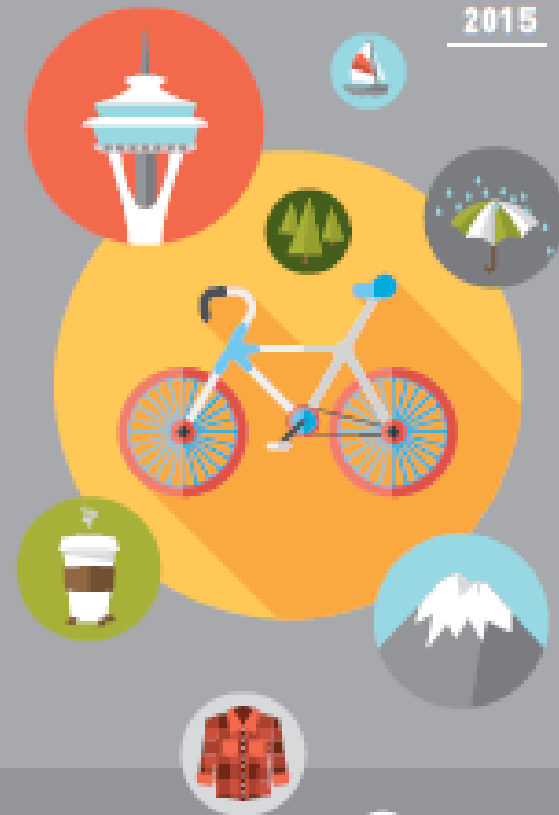


## SEATTLE BY BIKE

your easy-start guide to  
bicycling around Seattle

## SEATTLE BIKE MAP

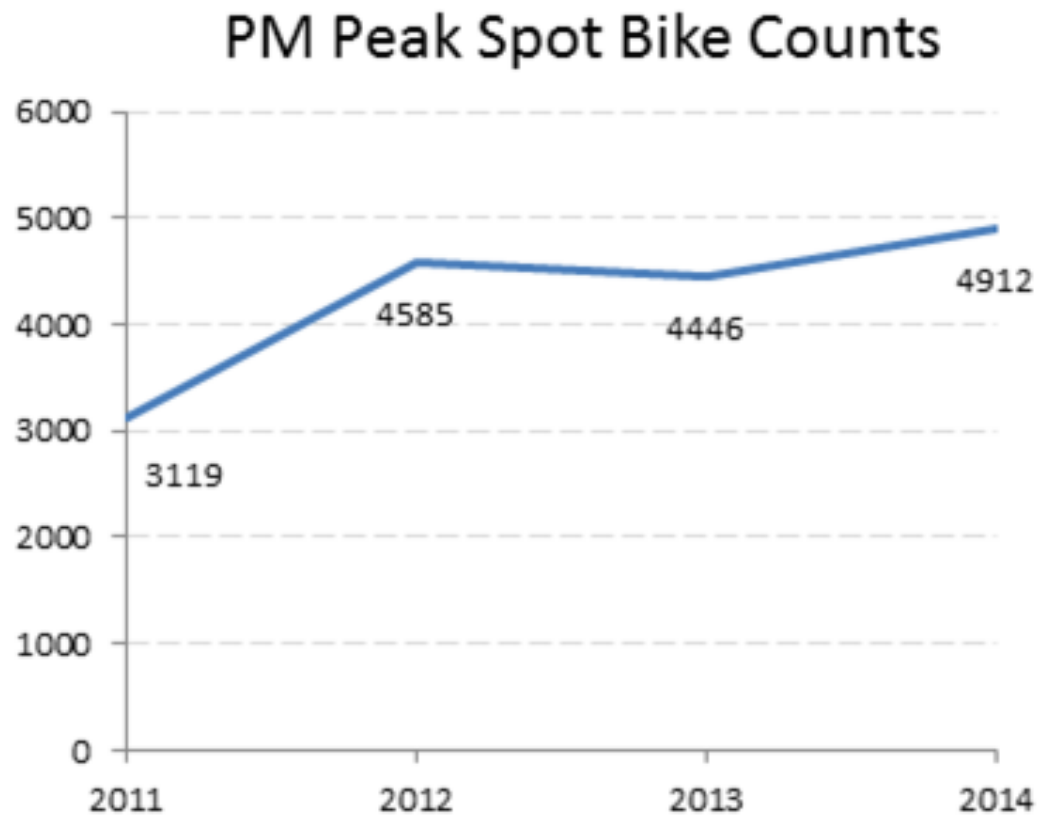
  
2015



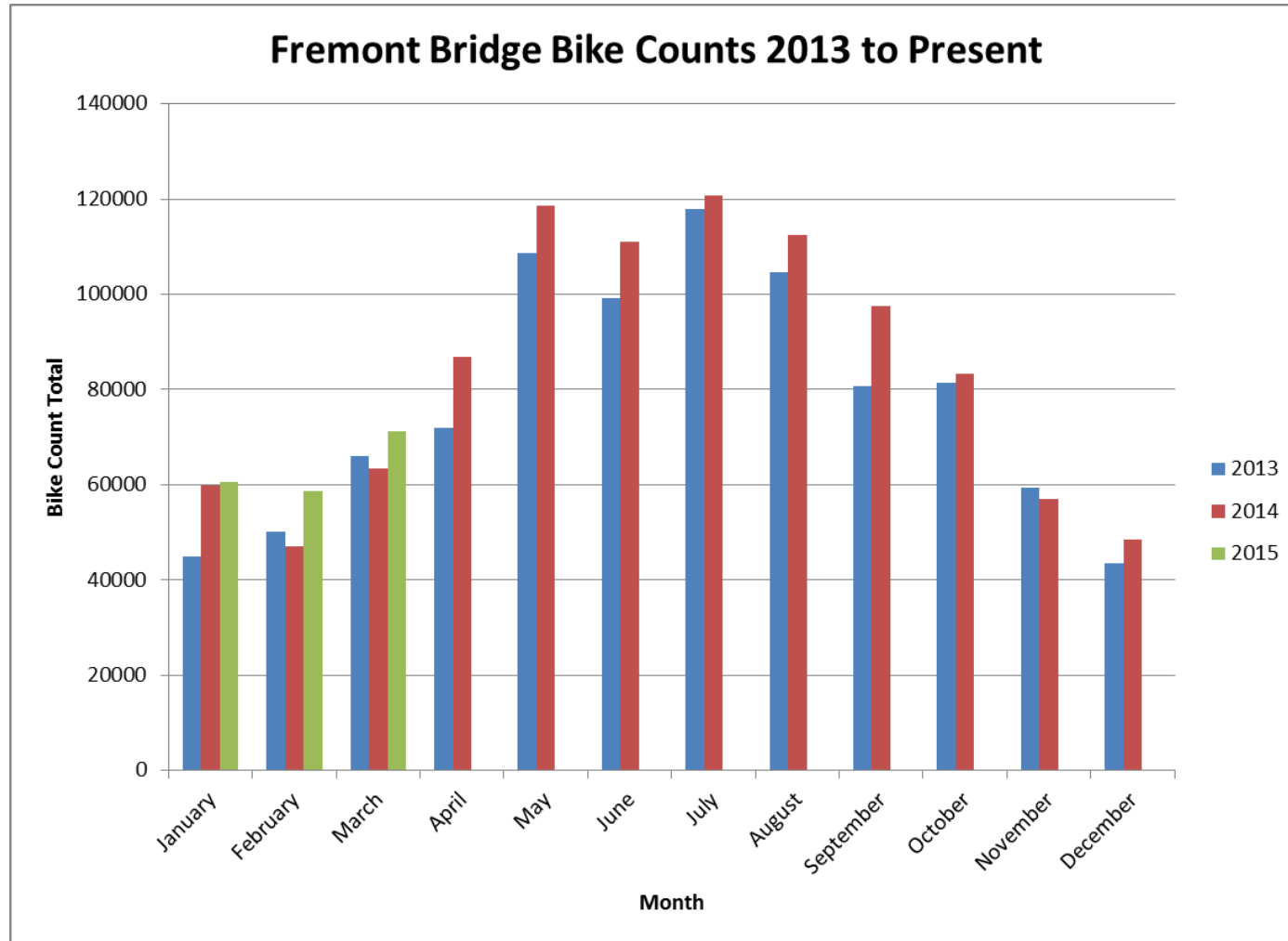
FREE



# 2014 data - citywide bike counts



# 2014 data - Fremont counts



# Questions?

Walkandbike@seattle.gov |(206)684-7583

<http://www.seattle.gov/transportation/bikeprogram>

<http://www.seattle.gov/transportation>

