

Amend Landscape Conservation and Infrastructure Program Funding Plan to include Westlake Park

Presentation: December 10, 2025



Presentation Overview

Purpose of today's legislation:

- Modifies the Landscape Conservation and Local Infrastructure Program (LCLIP) funding plan to include Westlake Park
- Appropriates LCLIP funding to support the Westlake Park Improvement Project



Approving this legislation helps the project stay on schedule and be completed by summer 2026



Vicinity: Westlake Park

Westlake Park Improvement Project

Project Overview & Goals

- Expands green spaces, improves accessibility and community amenities, addresses safety and security concerns, and removes aging/damaged infrastructure
- Seattle Parks Foundation to execute project scope and transfer completed improvements to City
- Following robust community engagement on design (in 2024 and 2025), construction began fall 2025

Previous Council Actions

- November 2024 – Approved \$3.7M for project
- July 2025 – Approved additional \$900K for project
- August 2025 – Authorized SPR to accept improvements at Westlake as a donation from Seattle Parks Foundation



Westlake Park Improvement Project

Baseline Project Scope:

- Remove fountain and arch, Modify the stage for accessibility
- Electrical improvements including lighting infrastructure
- Paving restoration and installation of planting areas
- Vehicle crash protection

Baseline Project Cost: \$4.6M

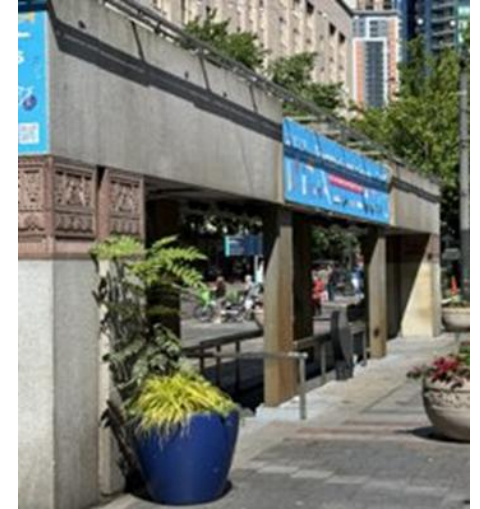
- Adopted 2025 CIP: \$3.7M REET
- Mid-Year 2025 Appropriation: \$900K CRS-U

Adjusted Project Scope (subject of this legislation):

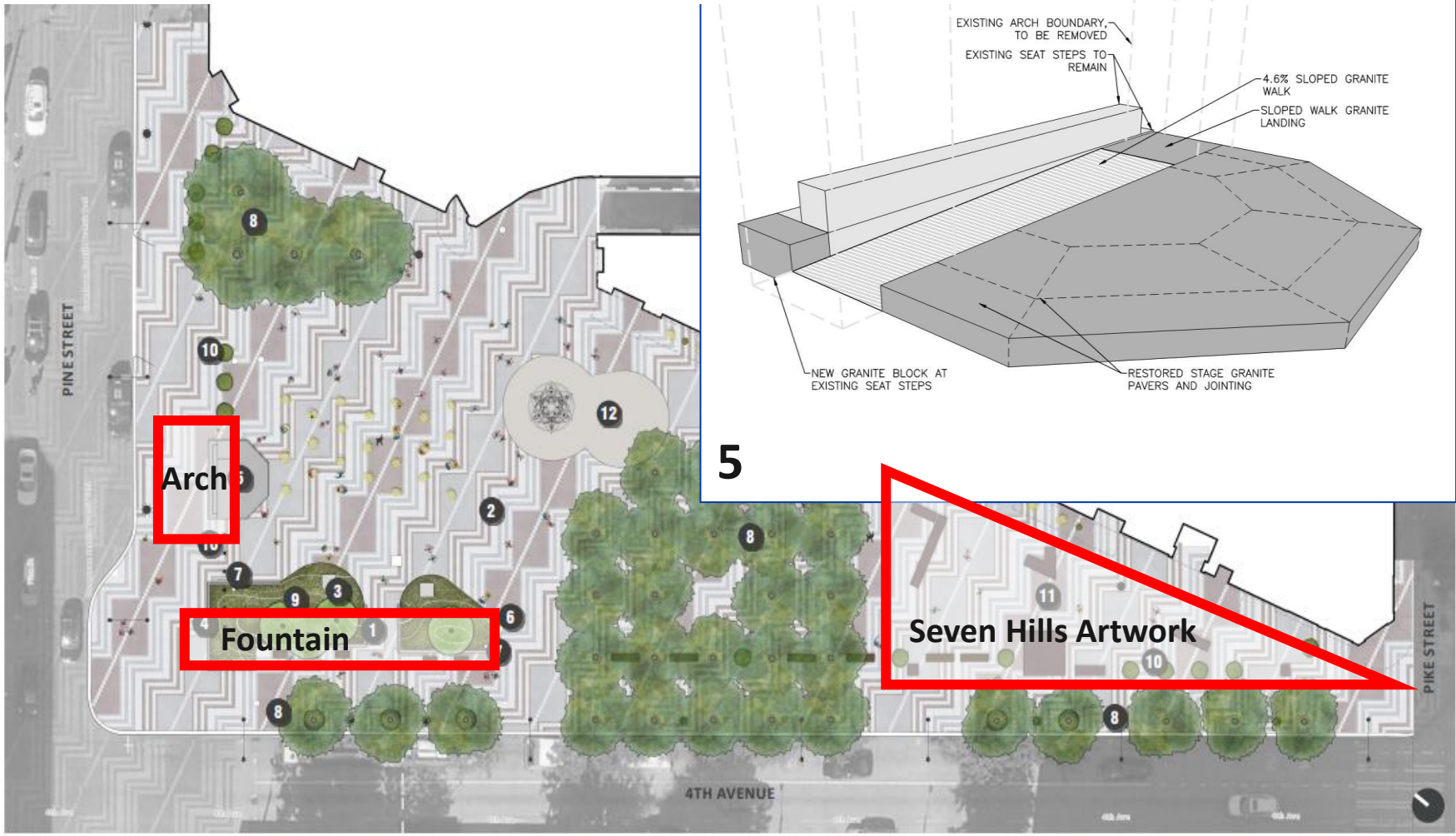
- Removal, transport, and storage of Seven Hills sculptures and certain elements of the waterwall and arch
- Paving improvements

Estimated Additional Cost: \$1M (Proposed to be LCLIP revenues)

Adjusted Estimated Project Cost: \$5.6M



Westlake Improvement Project



Park improvement legend

- 1 The fountain is removed
- 2 The existing Coast Salish basket weave pattern is maintained. Uneven pavers are leveled and restored
- 3 Carved granite from the arch is salvaged and incorporated into the park
- 4 Portions of the granite curb, surrounding the fountain, are preserved
- 5 The existing podium is modified for ADA accessibility, to maintain history of gatherings, free speech and events
- 6 Electrical upgrades are made for improved site lighting and seasonal events
- 7 Two new power pedestals for food trucks and event power
- 8 Conditions for the existing trees are improved to increase longevity and address uneven pavement
- 9 New landscaping and irrigation are added to enhance the gathering plaza and park
- 10 Crash rated bollards and deterrants are added at the perimeter of the park for pedestrian safety
- 11 Existing Seven Hills art installation to remain
- 12 Existing play area to remain

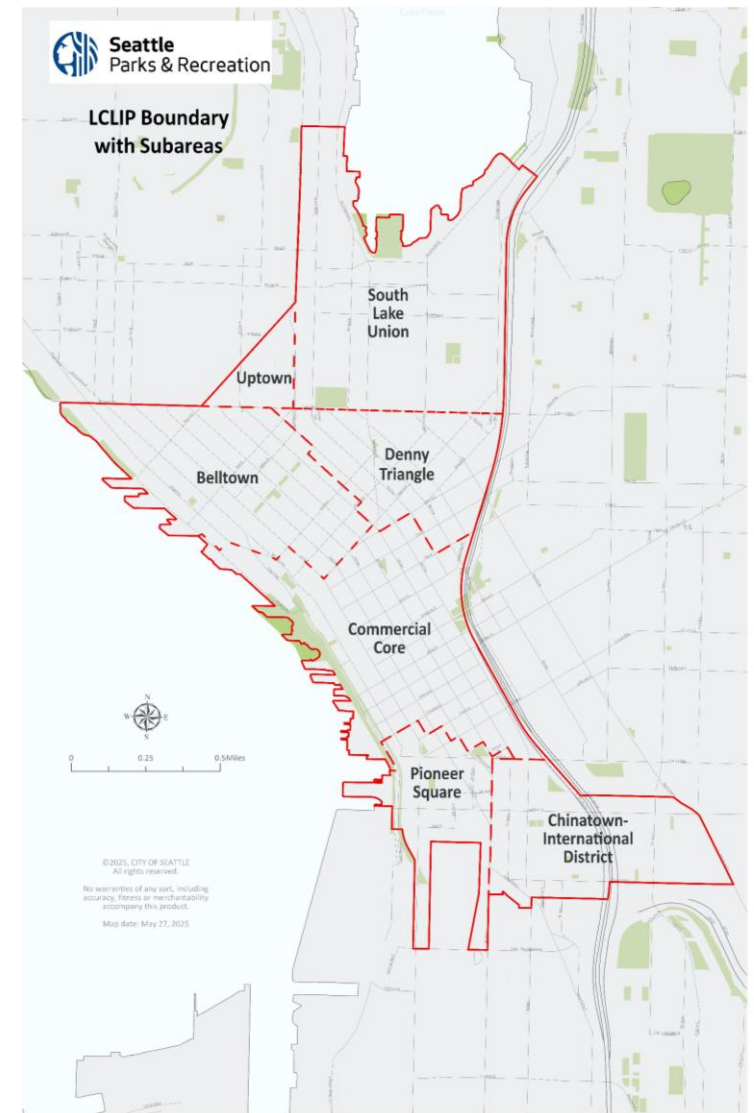
WESTLAKE PARK



LCLIP in Seattle

- 2013: City Council adopted LCLIP funding plan
 - Part of an Interlocal Agreement (ILA) between Seattle and King County to implement incentive zoning in Local Infrastructure Project Area (LIPA)
- Program runs through 2038 (25 years)
 - SDOT received annual funding for the first 10 years
 - SPR receives annual funding for second 10 years
 - SDOT receives annual funding for remaining 5 years
- 2025 is the first year for SPR to receive funding
 - Appropriated in SPR's Adopted 2025-2030 CIP
 - Initial revenues received July 2025
 - Second distribution expected December 2025
- In determining approach to address adjusted scope for the Westlake Project, SPR assessed LCLIP revenues
 - Projecting 2025 revenues will be above Adopted 2025 Budget

Local Infrastructure Project Area (LIPA)



Goals of Proposed Legislation

Further Project Goals through Adjusted Scope

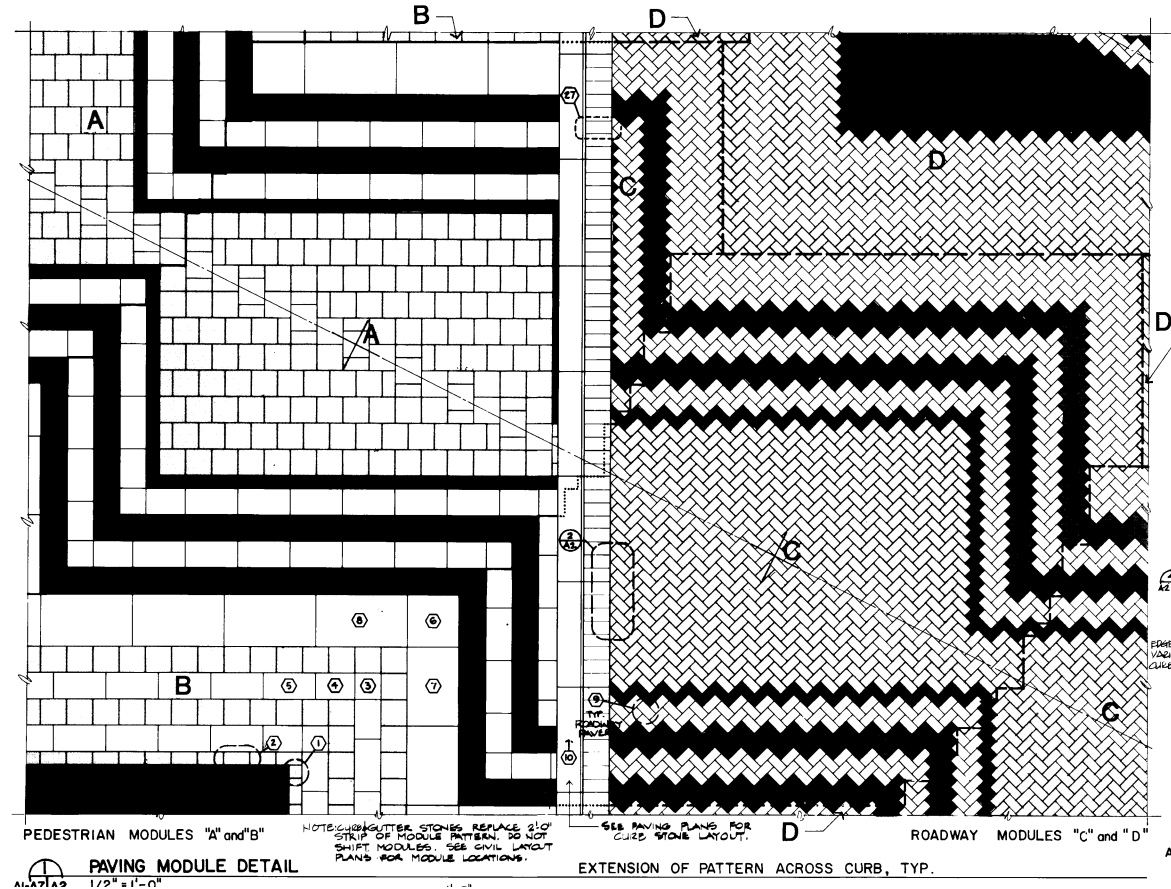
- Safety and Security (CPTED)
- Improved Guest Experience
- Addresses aging infrastructure
- Sets stage for future improvements to the Westlake Area
- Supports removal, storage and eventual relocation of art in a manner agreed to by artist

Keeps Project on Schedule

- **Phase 1 Complete:** July 1, 2024 – November 1, 2024
 - Planning, Concept Design, Public Outreach and Stakeholder Engagement
- **Phase 2 Complete:** November 2024 – September 2025
 - Community Engagement including Public Open House
 - Design, Engineering and Permitting
- **Phase 3 Underway:** Now – Q2 2026
 - Construction: Completion prior to summer 2026



Questions?



**A snip from the original 1987 Westlake Park hand-drafted plans showing the intricate Coast Salish inspired basket weave paving pattern. This project will preserve this granite paving and address areas where the pavers have heaved.*