

# Seattle City Council

Civil Rights, Utilities, Economic Development &  
Arts Committee

## Harbor Island Street Vacation Agreements

*November 28, 2017*

Seattle  
 Public  
Utilities

# Harbor Island – Terminal 18

THE NORTHWEST  
SEAPORT ALLIANCE  
SEATTLE HARBOR



Container Terminal Non-Container Terminal Rail Yard

# Council Request

Requesting authorization to sign four agreements related to 1998 Harbor Island Street Vacations and 1999 Redevelopment Agreement:

- A. Master Easement with 11 easements
- B. Asset Transfer Agreement
- C. Port Granted Access Agreement
- D. Easement with BP Products LLC

# Context

## Guiding Agreements

- 1998 Street Vacation Petition by Port to City
- 1999 Harbor Island Port-City Redevelopment Agreement

## Complicated location and project

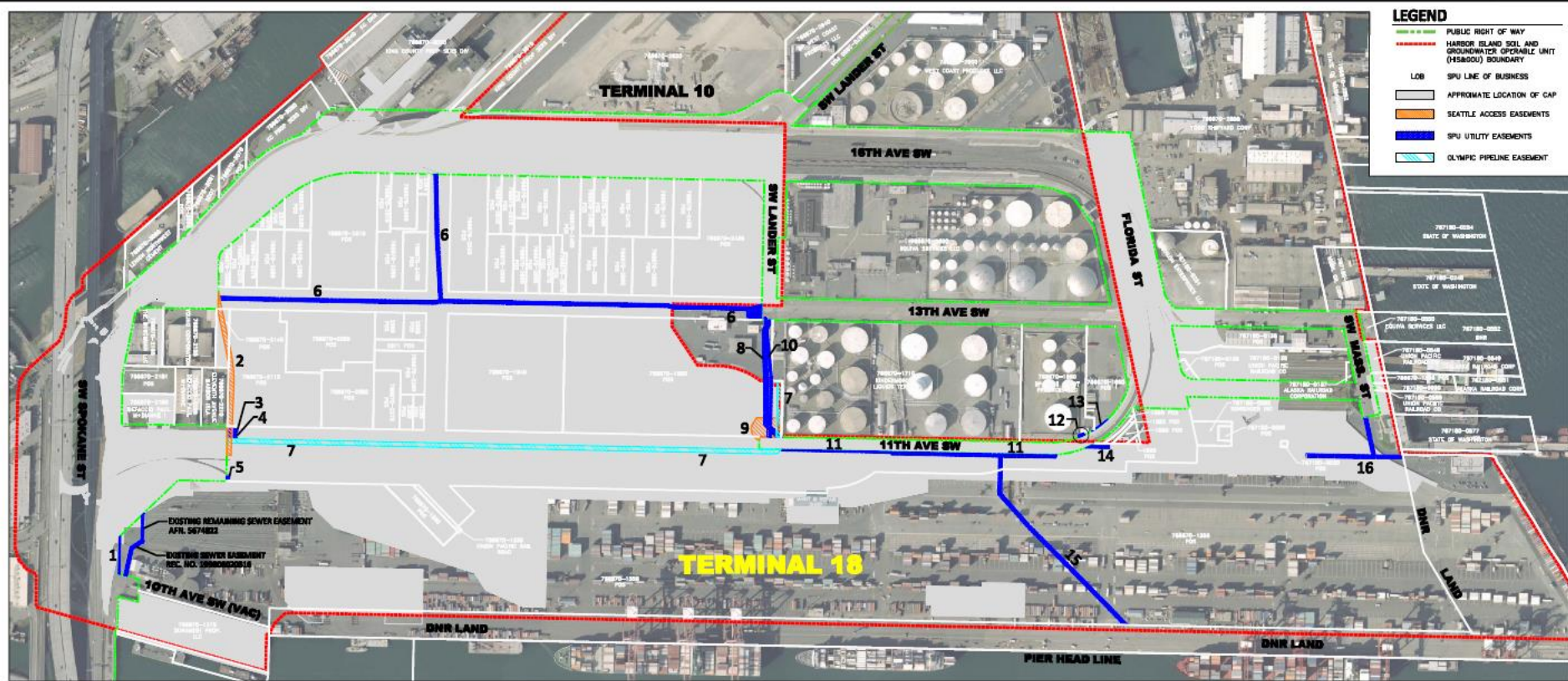
- Water/storm/sewer lines, contaminated soils, consent decrees and restrictive covenants, numerous landowners and Port tenants, past record keeping, staff turnover, old easements and encroachments, work priorities, etc.

## Atypical street vacation

- SPU typically part in SDOT vacation legislation



# Master Easement, BP Easement, Access Agreement Context



EASEMENT ID	GENERAL DESCRIPTION	LOB
1	STORM LINE ALONG SW SPOKANE ST	STORM
2	11TH AVE SW LOOP ROAD	ACCESS
3	SEWER LINE ALONG WESTERN EDGE OF 11TH AVE SW SPOKANE ST	SEWER
4	WATER METER AND HYDRANT ON 11TH AVE SW BY SW SPOKANE ST	WATER
5	SEWER LINE ALONG EASTERN EDGE OF 11TH AVE SW SPOKANE ST	SEWER
6	SEWER LINES, PUMP STATION, AND WATER LINE	SEWER/WATER
7	OLYMPIC PIPE LINE EASEMENT	FUEL
8	WATER LINE AND TEST STATIONS ON SW LANDER ST BETWEEN 11TH AVE SW AND 13TH AVE SW	WATER

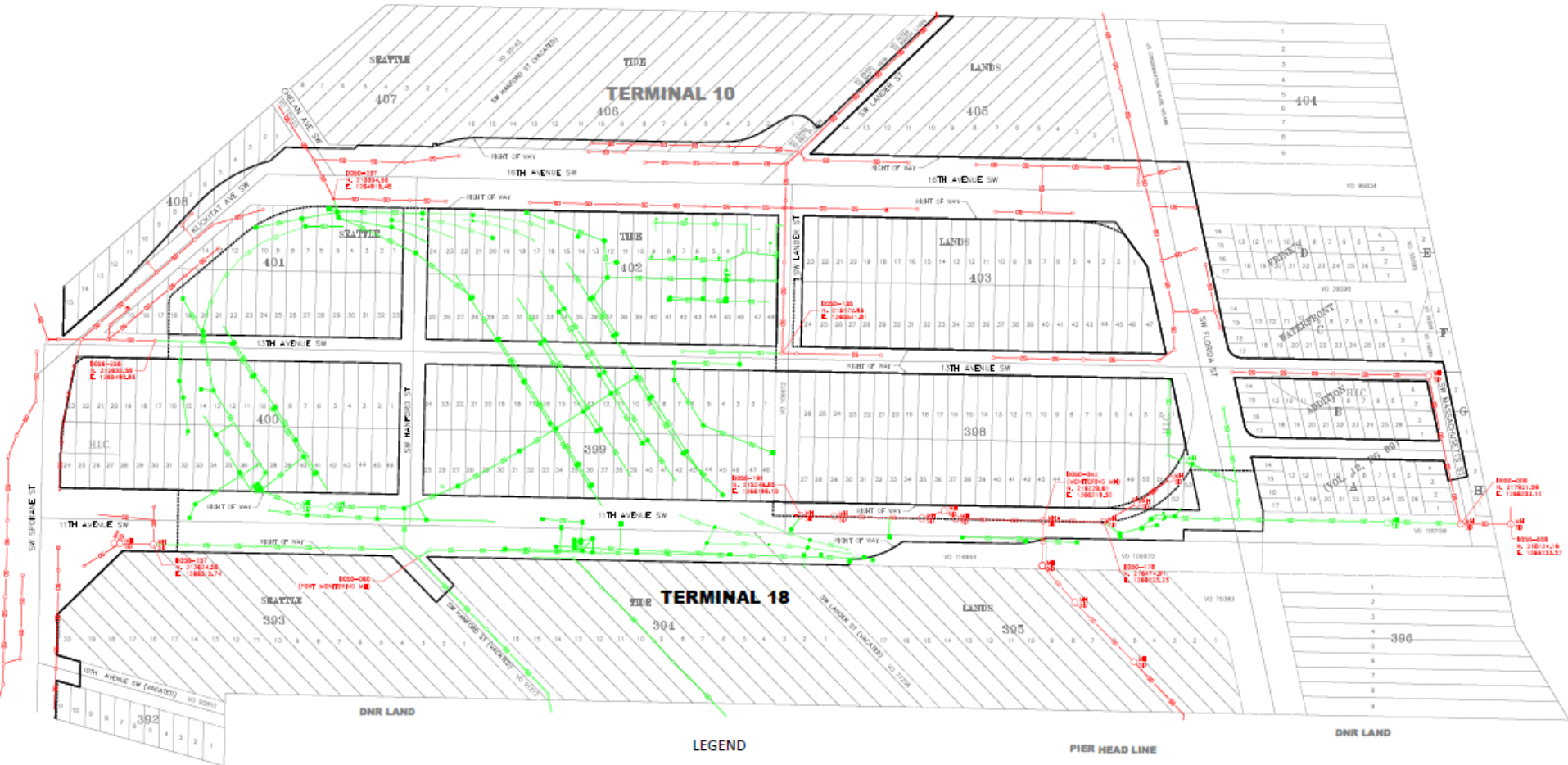
EASEMENT ID	GENERAL DESCRIPTION	LOB
9	TURNAROUND AT 11TH AVE SW AND SW LANDER ST	ACCESS
10	SEWER LINE AT SW LANDER ST (MIDWAY OF ONEST SHED)	SEWER
11	STORM LINE ALONG EASTERN 11TH AVE SW BETWEEN SW LANDER ST AND SW FLORIDA ST	STORM
12	WATER METER T&L RUN AND STORM MH (BP PROPERTY OWNER)	WATER/STORM
13	STORM LINE ALONG WESTERLY 11TH AVE SW AT CURVE BY SW FLORIDA ST (LOTS 90 AND 91, BLOCK 398)	STORM
14	SEWER LINE AT 11TH AVE SW	SEWER
15	STORM LINE ACROSS 11TH AVE SW (UNDER RAILROAD TRACKS)	STORM
16	STORM LINE FROM MASSA/JETTETS ROW LINE TO M4 JUNCTION AT 11TH AVE SW AND TO DNR	STORM



NOT TO SCALE  
CALL 48 HOURS BEFORE YOU DIG  
1-800-424-5555



# Asset Transfer Agreement Example



**STORMWATER NOTE:**  
 1) THE PURPOSE OF THIS EXHIBIT MAP IS TO SHOW THE LOCATION OF THE ABOVE LISTED STORM DRAIN AND STRUCTURES. ACCURATE STORM DRAIN AND STRUCTURE LOCATIONS ARE NOT SHOWN WITH THIS EXHIBIT MAP.

**SURVEY NOTE:**  
 1) GRID COORDINATES SHOWN ARE BASED UPON THE WASHINGTON STATE PLANE COORDINATE SYSTEM, NORTH ZONE (NAD 83/91). UNIT OF MEASUREMENT: U.S. SURVEY FOOT.



- LEGEND**
- SPU OWNED & MAINTAINED STORM DRAINS
  - PORT OWNED & MAINTAINED STORM DRAINS
  - EX RIGHT-OF-WAY LIE
  - NEW / MODIFIED RIGHT-OF-WAY LIE
  - H.I.C. HARBOR ISLAND EXHIBIT
  - DNR DEPARTMENT OF NATURAL RESOURCES

PIER HEAD LINE

# Next Steps

- Council Action
- SDOT to bring final street vacation legislation
  - Reference SPU legislation



# Questions

