



ROUTE 44 Transit-Plus Multimodal Corridor

Acquisition Acceptance Ordinance

Transportation & Seattle Public Utilities Committee

April 4, 2023

Our Vision, Mission, Values, & Goals

Seattle is a thriving equitable community powered by dependable transportation. We're on a mission to deliver a transportation system that provides safe and affordable access to places and opportunities.

Core Values & Goals:

Equity, Safety, Mobility, Sustainability, Livability, and Excellence.

Purpose

The proposed legislation:

- Accepts a deed for street purposes from a private property owner conveying a portion of property in connection with the Route 44 Transit-Plus Multimodal Corridor project
- Places the property under SDOT's jurisdiction
- Incorporates ("lays off") the property as City right-of-way

Metro's Route 44 Bus Route

Metro's Route 44 Bus Route (Route 44):

- One of the highest ridership routes in Seattle, serving more than 9,300 daily riders
- 10.7 mile east-west trolley bus route in North Seattle, serving Ballard, Wallingford, and University District neighborhoods
- Connects with Sound Transit's U-District and University of Washington Link Light Rail Stations and King County Metro's top 2 RapidRide routes: E Line and D line, and several major north-south transit routes, now and in the future



Route 44 Transit-Plus Multimodal Corridor Project

The City of Seattle partnered with King County Metro to improve transit reliability, reduce travel times, and enhance pedestrian safety and access along this transit corridor.

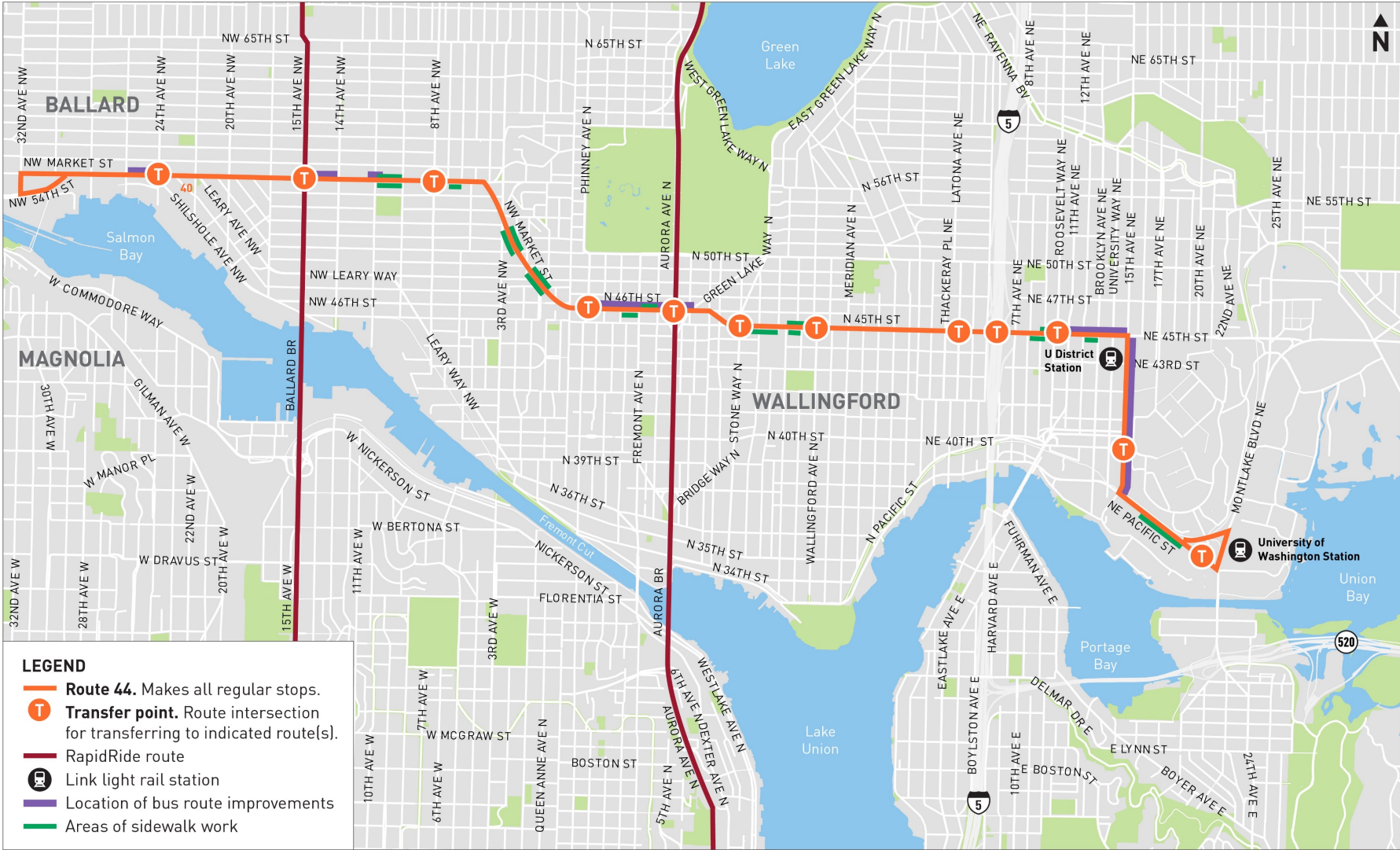
The project was designed to update various locations along Metro's Route 44 bus route between Ballard and the U-District to improve transit reliability and travel times, and to enhance pedestrian safety.



Route 44 Transit-Plus Multimodal Corridor Project

- Dedicated bus lanes
- Signal upgrades or optimization
- Channelization changes or turn restrictions
- Safety improvements
- Pedestrian access
- Intersection improvements
- Sidewalk upgrades

Project Area

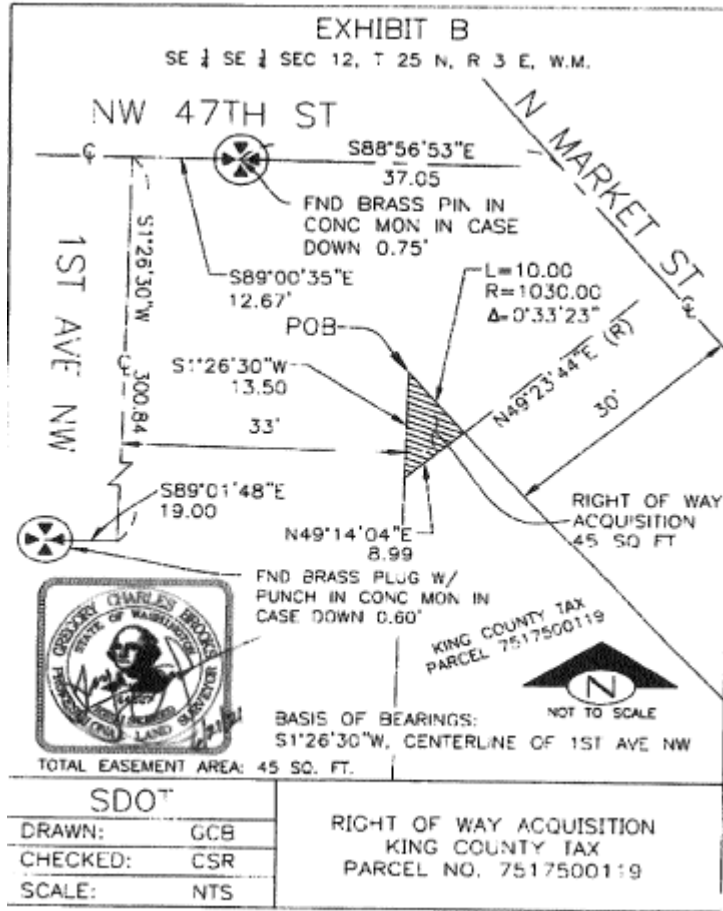


Property Acquisition

The acquired property totals approximately 45 square feet

The impacted intersection abuts 1st Avenue NW, NW 47th St, and N Market St

Impacted Parcel



King County Assessor's Office, King County GIS Center, King County, King County Assessor's Office, King County GIS Center, EagleView Technologies, Inc.



“Before” View of Impacted Parcel



“After” View of Impacted Parcel



Proposal / New action

Acceptance of this property is necessary to successfully construct the project as planned, specifically to widen the sidewalk and add an ADA curb ramp.

Questions?

Stay in touch:



Janet.Loriz@seattle.gov



206.615-0860



www.seattle.gov/transportation/projects-and-programs/programs/transit-program/transit-plus-multimodal-corridor-program/route-44---transit-plus



From the entire SDOT Team:
Thank you!