



Office of the Waterfront, Civic Projects and Sound Transit

COMMITTEE: Transportation, Waterfront, & Seattle Center

April 16th, 2026



Briefing Overview

- Waterfront
 - History & Background
 - Program & Projects
- What's next for Waterfront?
 - Elliott Bay Seawall Phase 2, North Waterfront
 - Pier 48 Opportunity
- Operations and Maintenance

PROGRAM TIMELINE



2001: Nisqually Earthquake – 6.8 magnitude damaged Alaskan Way Viaduct and Elliott Bay Seawall

2001 – 2009: Multi-agency Viaduct/Seawall replacement planning, design and environmental process (WSDOT, City, County, Port) – parallel City waterfront planning efforts

2009 – 2010:

- City/County/State decision on deep-bore tunnel replacement for SR99 viaduct structure
- Waterfront Committee and Team selection

2010 – 2012:

- Broad community engagement
- Concept Design, Framework Plan, Strategic Plan adopted
- Seawall design and ballot measure

2013 – 2019:

- Waterfront Office created, detailed design and permitting begins
- Seawall reconstructed
- City, State funding secured
- Philanthropy, Waterfront LID advance to final agreements
- Bore tunnel constructed (WSDOT)
- Viaduct demolished (WSDOT)

2019 – 2026: Waterfront Construction





Pier 62 Rebuild
(2017-2020)

Seattle Aquarium Ocean
Pavilion (2021-2024)

Seattle Multimodal Terminal
at Colman Dock Project
(2017-2023)

Seawall Project
(2013-2017)

SR 99 Tunnel Project
(2011-2019)

Pike Place Market's
MarketFront (2015-2017)

STADIUMS

PIONEER
SQUARE

WEST EDGE

RETAIL CORE

PIKE PLACE
MARKET

BELLTOWN

ELLIOTT BAY SEAWALL HABITAT IMPROVEMENTS

Completed in 2017





DEEP BORE TUNNEL
WSDOT
Completed in 2018





VIADUCT DEMOLITION
WSDOT
Completed in 2019

FOUR PEDESTRIAN BRIDGES



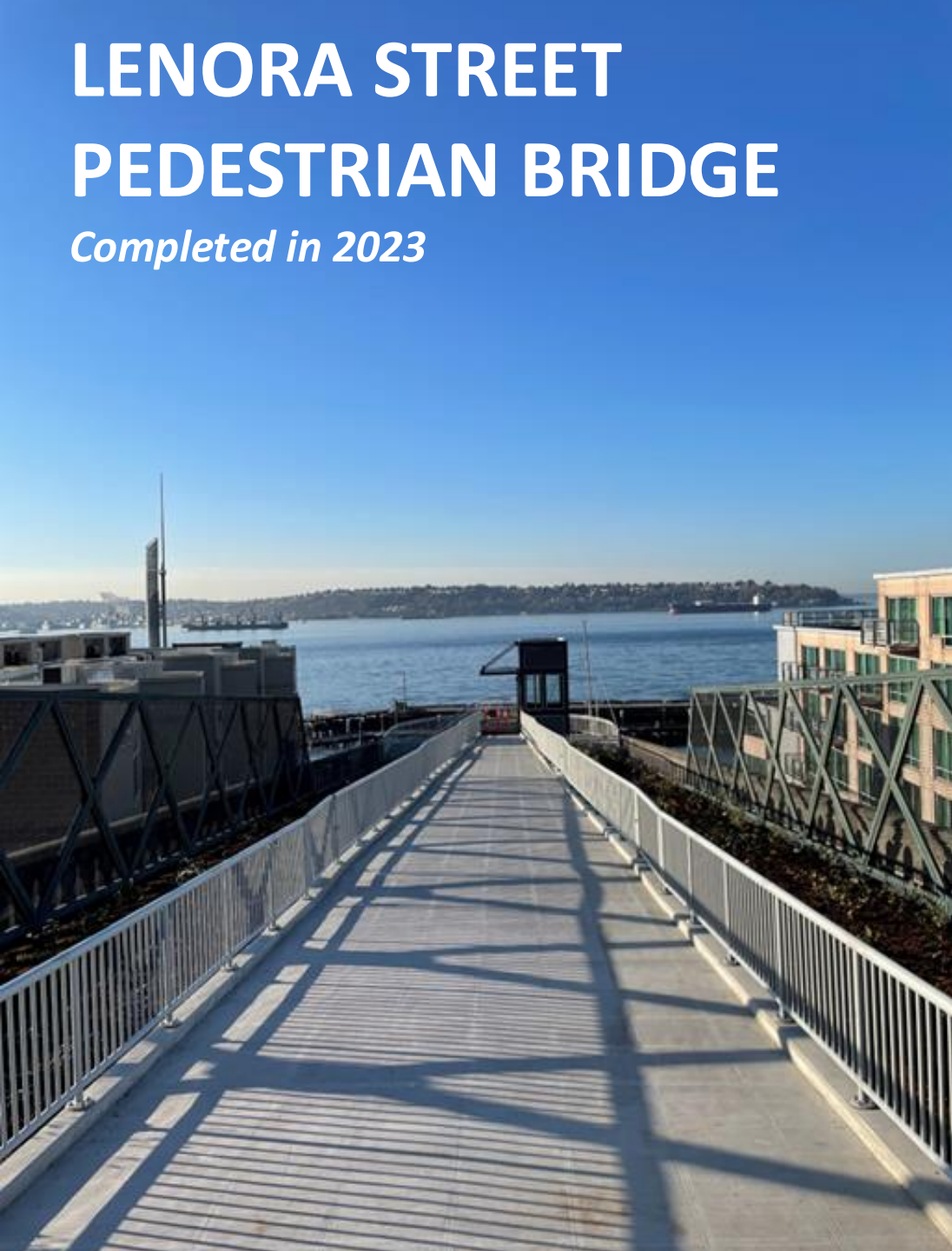
UNION STREET PEDESTRIAN BRIDGE

Opened in December 2022



LENORA STREET PEDESTRIAN BRIDGE

Completed in 2023



MARION STREET PEDESTRIAN BRIDGE

Opened in December 2023



OVERLOOK WALK

Opened in October 2024



EAST/WEST CORRIDOR IMPROVEMENTS



Railroad Way - Stadium
District



Pioneer Square historic
neighborhood



Pike Pine Corridors
connecting historic
market to Capitol Hill



Belltown neighborhood

RAILROAD WAY

Completed in spring 2023





PIONEER SQUARE IMPROVEMENTS

Opened in December 2024

PIKE/PINE IMPROVEMENTS



Opened in June 2025

A large group of people, including men in suits and women in business attire, are gathered under a large, green, arched metal structure. Many are waving and smiling. The scene is outdoors on a city street with trees and buildings in the background. The sky is clear and blue. The archway has a decorative, lattice-like top. The people are standing on a paved sidewalk. Some are holding red ribbons, suggesting a ribbon-cutting ceremony. The overall atmosphere is celebratory and public.

BELLTOWN IMPROVEMENTS

Opened in March 2026

ALASKAN WAY AND PARK PROMENADE





PIER 56

Seattle SHOP

MINERS LANDING

Public Storage

FEED YOUR FINE

PLANTINGS & GARDENS



VIEWS



PROTECTED BIKE LANE





PIER 62

Opened in September 2020

PIONEER SQUARE HABITAT BEACH

Opened in July 2023



PUBLIC RESTROOM



Opened in March 2025

PIER 58

Opened in July 2025



PERMANENT ARTWORKS

Arts and culture play a central role on the waterfront, through publicly sited commissions, live arts and entertainment and the creation of new cultural spaces for artistic production and presentation.

Responding to the history of the site, its ecology, economy and communities, the art program helps to create a sense of place on the renewed waterfront that acts as an invitation to residents and visitors alike.

These publicly sited artworks are funded by the 1% Art funds generated by the Waterfront Seattle program.

- 1 Stephen Vitiello
Land Buoy Bells
- 2 MTK Matriarchs
Grandmother's Basket
- 3 Ann Hamilton
Guests
- 4 Shaun Peterson
Family
- 5 Norie Sato
*Unfurling a Gesture
(The Nature of Persistence)*
- 6 Oscar Tuazon
*To Our Teachers
deq'aled (Houseposts)*
- 6 Randi Purser
*Looking At All Tomorrows
ʔaslaʔlabad k'ədi bək'dadatu*
- 6 Tyson Simmons & Keith Stevenson
*Honoring Our
Muckleshoot Warriors*
- 7 Buster Simpson
Migration Stage
- 8 Derek Bruno & Gage Hamilton
Sound to Summit
- 9 Laura Haddad & Tom Drugan
Seawall Strata



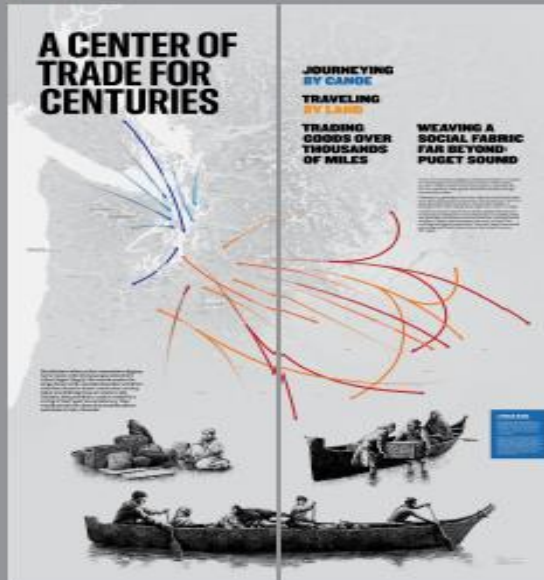
There are also two historic fountains that join other publicly sited artworks along the waterfront including the Joshua Green Fountain by George Tsutakawa on the Park Promenade and the Waterfront Fountain by James FitzGerald and Margaret Tomkins at Pier 58.

INTERPRETIVE AND OPERATIONAL WAYFINDING



Tri-Arm Display #1 Cargo Trade Routes & Working Wharves

WF-E-1
Side A



Side B



Side C



WATERFRONT PROGRAM - 2026 AND BEYOND





SEAWALL PHASE 2

North Waterfront

Virginia Street – Broad Street

Project Need: Reduce risks of coastal storm and seismic damage; protect public safety, critical infrastructure and associated economic activities; improve habitat

Status: Permits expire in 2031; design work in progress

Current Funding: \$5M in levy funding & \$1M federal earmark (pending congressional action)

Deliverables: Updated cost estimate, financing plan, concept design, and environmental documentation.

Schedule: Q1 2026 Project initiation activities; Q2 RFP process; Q4 Initiate concept design refresh & advancement

Olympic Sculpture Park

PHASE 2

Pike Place Market

SEAWALL

PHASE 1

Colman Dock/
Ferry Terminal

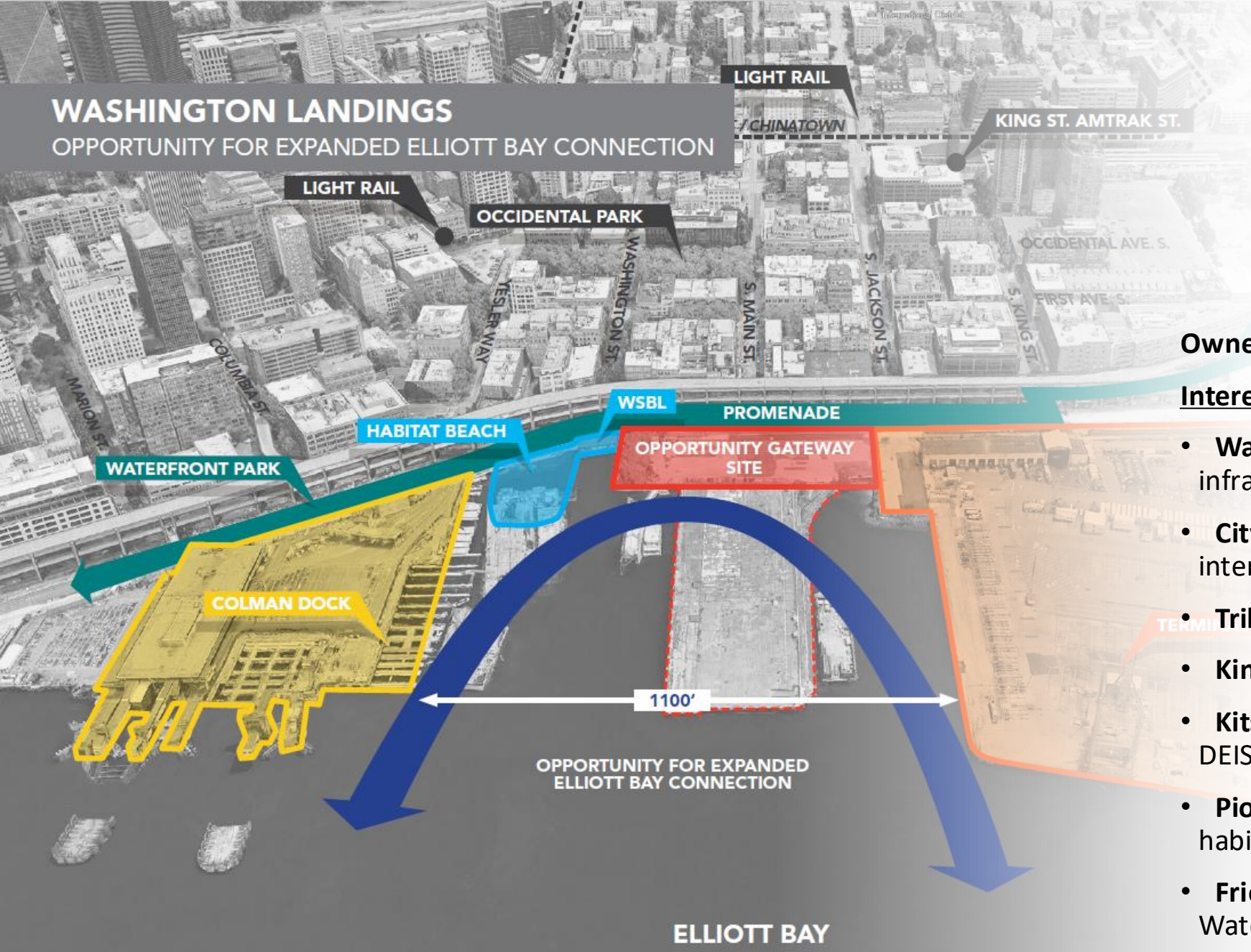


PIER 48 - FUTURE OPPORTUNITY



WASHINGTON LANDINGS

OPPORTUNITY FOR EXPANDED ELLIOTT BAY CONNECTION



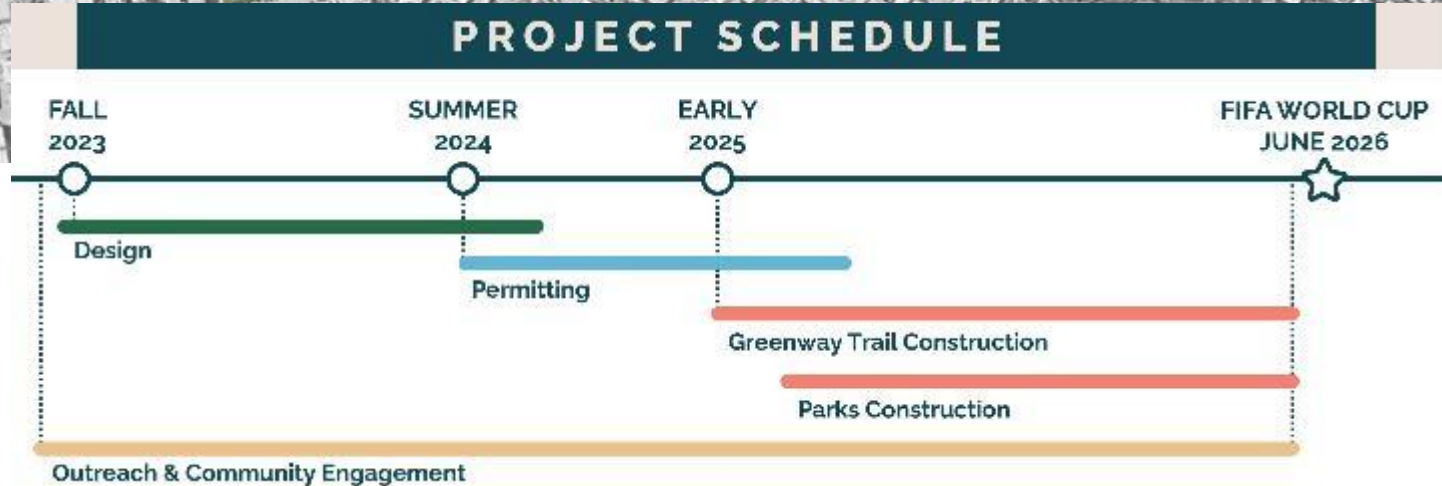
PIER 48

Owner: Washington State

Interested Parties

- **Washington State Ferries** – electrification infrastructure
- **City of Seattle** – OPCD attends quarterly interagency meetings
- **Tribes** – habitat restoration
- **King County** – passenger ferry dock
- **Kitsap County** – vehicle ferry alternative in DEIS
- **Pioneer Square Alliance** – expansion of beach, habitat restoration
- **Friends of the Waterfront** – continuity of Waterfront Park

Elliott Bay Pedestrian and Bike Connections to Open prior to FIFA World Cup





WATERFRONT PARK OPERATIONS

PARK OPERATIONS

- Partnership with non-profit Friends of Waterfront Park
- Dedicated, specialized City **maintenance** team from Seattle Center
- **Free public programming and activation** year-round through Friends
- **Public safety** and outreach services jointly provided
- Oversight Committee to ensure accountability and Mayor/Council reporting

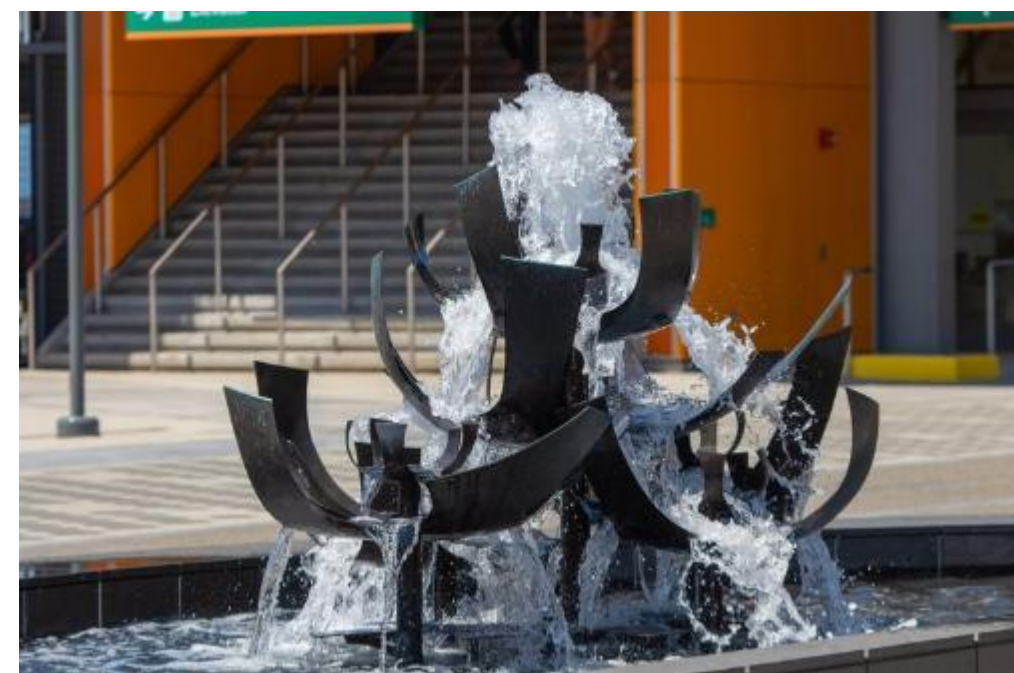


WATERFRONT OPS TEAM



WATERFRONT OPERATIONS TEAM

- Dedicated team that provides daily maintenance of the park
- Dedicated landscaping team
- Over 600 graffiti tags removed in 2025
- In 2025, over 450 Work Orders issued, outside of daily trash removal and litter picking

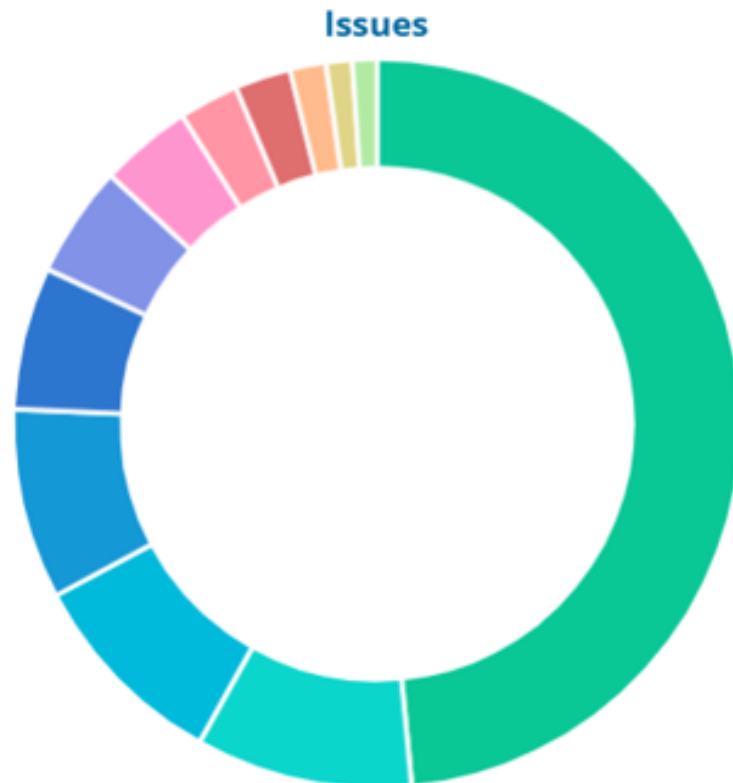


PUBLIC SAFETY TEAM



2025 PUBLIC SAFETY DATA

- Over 43,000 public interactions
- Less than 1% in relation to park rule violations
- 0 established encampments since 2023



Trespass	1057
Camping Attempt	210
Disturbance	198
Drug Use	184
Smoking	138
Welfare Check	108
Alcohol	89
Exclusion	58
Unauthorized Vehicles	54
Medical Assistance	35
Amplified Sound	25
Other	321
Total	2477

FIFA + Summer at Waterfront Park

Welcoming the world to Waterfront Park

- Soccer celebrations June 11 - July 6
- Partnership with Sounders/ Reign and LOC
- Friends free programming and activations (May – Sept)
 - Waterfront Markets
 - Food Trucks and Vendors
 - Movement Wellness and Play
 - Spotlight at Waterfront Park

Friends

Waterfront

Park



A stylized map of Seattle in shades of blue and green, overlaid with a white grid. A large white location pin icon is on the left. The text "FIND YOUR CELEBRATION" is written in large, bold, white capital letters, with "SEATTLE FAN CELEBRATIONS" in smaller white capital letters below it. Four purple circular markers on the map indicate event locations: SEATTLE CENTER, PACIFIC PLACE, WATERFRONT PARK, and VICTORY HALL. Each marker is connected by a white line to a small inset photo showing a scene from the event: a stadium tower, a colorful mural, a waterfront view, and a crowd at a hall. The word "SEATTLE" is written in large, bold, yellow capital letters at the top right of the map area.



QUESTIONS?

<https://www.seattle.gov/waterfront>

Contact us at: waterfrontseattle@seattle.gov