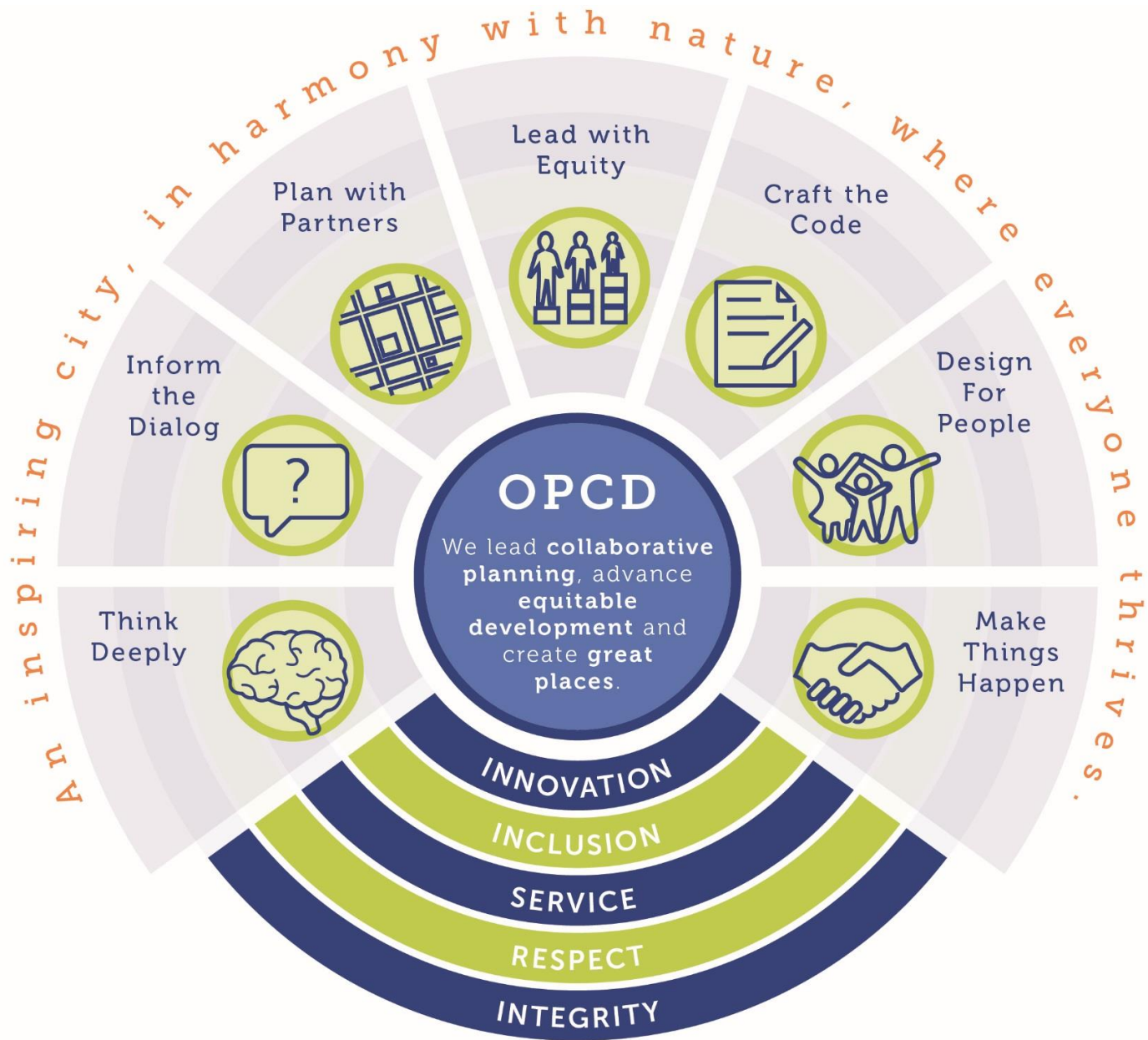


January 17, 2018

2018 OPCD Director's Report to Planning, Land Use, and Zoning Committee

A New Agency

- **Independent agency from DPD in June 2015 (Executive Order 2015-4)**
 - Planning and coordination functions to OPCD
 - Permitting, code enforcement, and inspections to SDCI
- **OPCD established by Council in November 2015 (Ordinance 124919)**
- **OPCD launched in January 2016**
- **Sam Assefa joined OPCD in June 2016**



Vision

An inspiring city, in harmony with nature, where everyone thrives.

Mission

We lead collaborative planning, advance equitable development, and create great places.

Key Responsibilities

- **Citywide and community planning**
 - Coordinate a vision for equitable development and growth consistent with Seattle's Comprehensive Plan
 - Partner with DON on community engagement for citywide and community priorities
- **Capital Cabinet coordination of City investments**
- **Coordinated planning with Seattle Public Schools**
- **Design Commission**
 - civic design excellence in capital improvement projects
- **Planning Commission**
 - broad planning goals, policies and plans for the physical development of the city

Organization

Citywide Initiatives

- Comprehensive and Regional Planning
- Land Use Policy
- HALA
- Research & Data

Community Planning

- Equitable Development Initiative (EDI)
- Community Planning

Placemaking

- Localized planning
- Urban design
- Redevelopment projects



2017 Staff Hires

- Deputy director
- Urban designer
- EDI fund manager
- Graphic designer
- Office assistant

Current recruitments

- Station area planning manager
- Community Planner



OPCD Budget

	2017 Adopted Budget	2017 FTE	2018 Adopted Budget	2018 FTE
Planning	\$6,680,471	40	\$6,576,613	39
Planning Commission	\$460,424	3	\$527,142	3
Design Commission	\$501,890	3.5	\$504,736	3.5
	\$7,642,785		\$7,608,491	

2017 Accomplishments

- **Community Planning-MHA rezones**
 - U District
 - Downtown / South Lake Union
 - Chinatown/ID
 - 23rd Ave nodes
 - Uptown
- **Design guidelines**
- **Citywide MHA FEIS**
- **ADU/DADU EIS Scoping**



2017 Accomplishments

- One Center City Public Realm
- ST3 coordination initiated
- Outside Citywide initiated
- DRAFT Duwamish Action Plan
- Kick off to 2020 Census
- City/school district agreement
- EDI Fund Round 1
- Community Engagement



Equitable Development Initiative Fund

Background: Investment in targeted place based strategies

FUNDING

- \$16M from City Plaza sale (one time)
- \$200K GF annually for consultant services (ongoing)
- 430K CDBG starting 2018 (ongoing)
- \$5M annually from AirBnB tax starting 2019 (ongoing)

WHY

Address historic and market inequities through investing in projects and programs that mitigate displacement and increase access to opportunity.

HOW

- Community Capacity Development
- Project Development
- Entrepreneurship and Talent Development

EDI Funding Round 1

- **SCIDpda/Friends of Little Saigon:** \$235K for capacity-building and predevelopment expenses for the Little Saigon Landmark Project.
- **Multicultural Community Center (MCC):** \$75K for capacity-building efforts and to further the development of the MCC in the Rainier Valley.
- **Rainier Beach Action Coalition:** \$75K for capacity-building efforts for the Rainier Beach Food Innovation District.

Community Engagement



Seattle
Office of Planning &
Community Development

Edward B. Murray, Mayor | Samuel Assefa, Director



Monthly news from the Office of Planning and Community Development

FEBRUARY 2017



Greetings from the Seattle Office of Planning and Community Development!

Here at OPCD, we are constantly seeking to improve our efforts to reach out to the community, share information, and learn more about issues important to you. This monthly newsletter will help us provide updates on the issues that are shaping our city.

Thanks for your interest. I look forward to working with you as we build a more equitable and vibrant Seattle for all.

Regards,
Sam

Samuel Assefa, Director



Join Us Urban Innovations OPCD Speakers Series

ARE WE THE VICTIMS OF OUR OWN SUCCESS?

West Coast cities seek
affordable housing solutions

TUESDAY
March 7, 5:30 p.m.

The Seattle Public Library
Central Library
1000 4th Ave
Free admission

Gil Kelley General Manager, Vancouver Planning, Urban Design and Sustainability
Joe Zehnder Chief Planner, Portland Bureau of Planning and Sustainability
John Rahaim Director, San Francisco Planning Department
Samuel Assefa Director, Seattle Office of Planning and Community Development
Steve Walker Director, Seattle Office of Housing

Moderated by KUOW's Joshua McNichols

KUOW The Seattle Public Library Seattle



OPCD

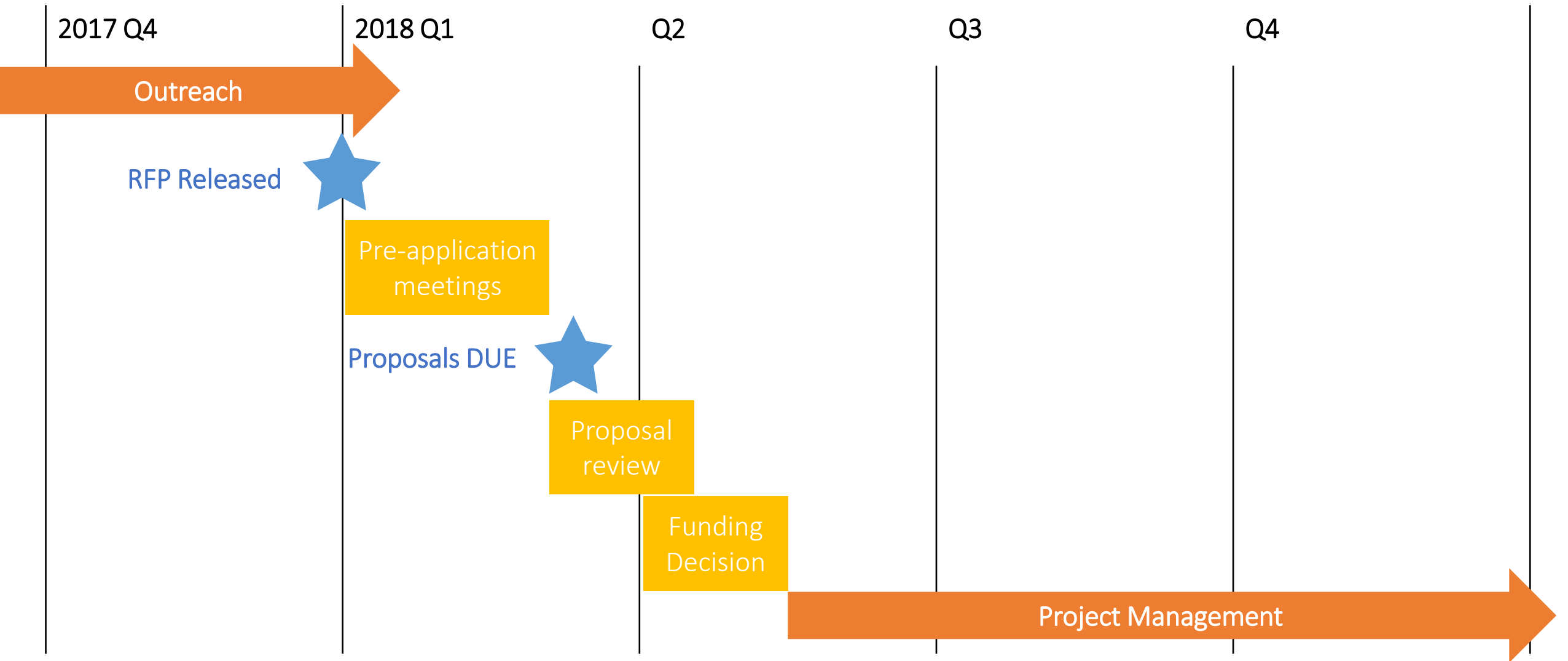
2018 Projects

- **Citywide MHA Implementation**
- **Comprehensive Plan amendments**
- **Accessory Dwelling Unit EIS**
- **Seattle Center Master Plan/Schools and coordinated planning with SPS**
- **Chinatown International District Planning/ISRD**

2018 Projects

- Duwamish Valley Action Plan
- Design guidelines: Capitol Hill, U District, Central Area, South Lake Union, Ballard, Uptown
- One Center City, Downtown public realm
- Sound Transit 3 station area planning
- EDI Round 2 funding process
- Community Planning

EDI Funding Round 2 - Timeline



COMPREHENSIVE PLAN CRITERIA FOR COMMUNITY PLANNING PRIORITIZATION

- Areas designated urban centers or villages in the Comprehensive Plan
- Areas with outdated community or neighborhood plans that no longer reflect current conditions, a citywide vision of the Comprehensive Plan, or local priorities

- Areas with high risk of displacement
- Areas with low access to opportunity and distressed communities
- Areas experiencing environmental justice concerns including public health or safety concerns

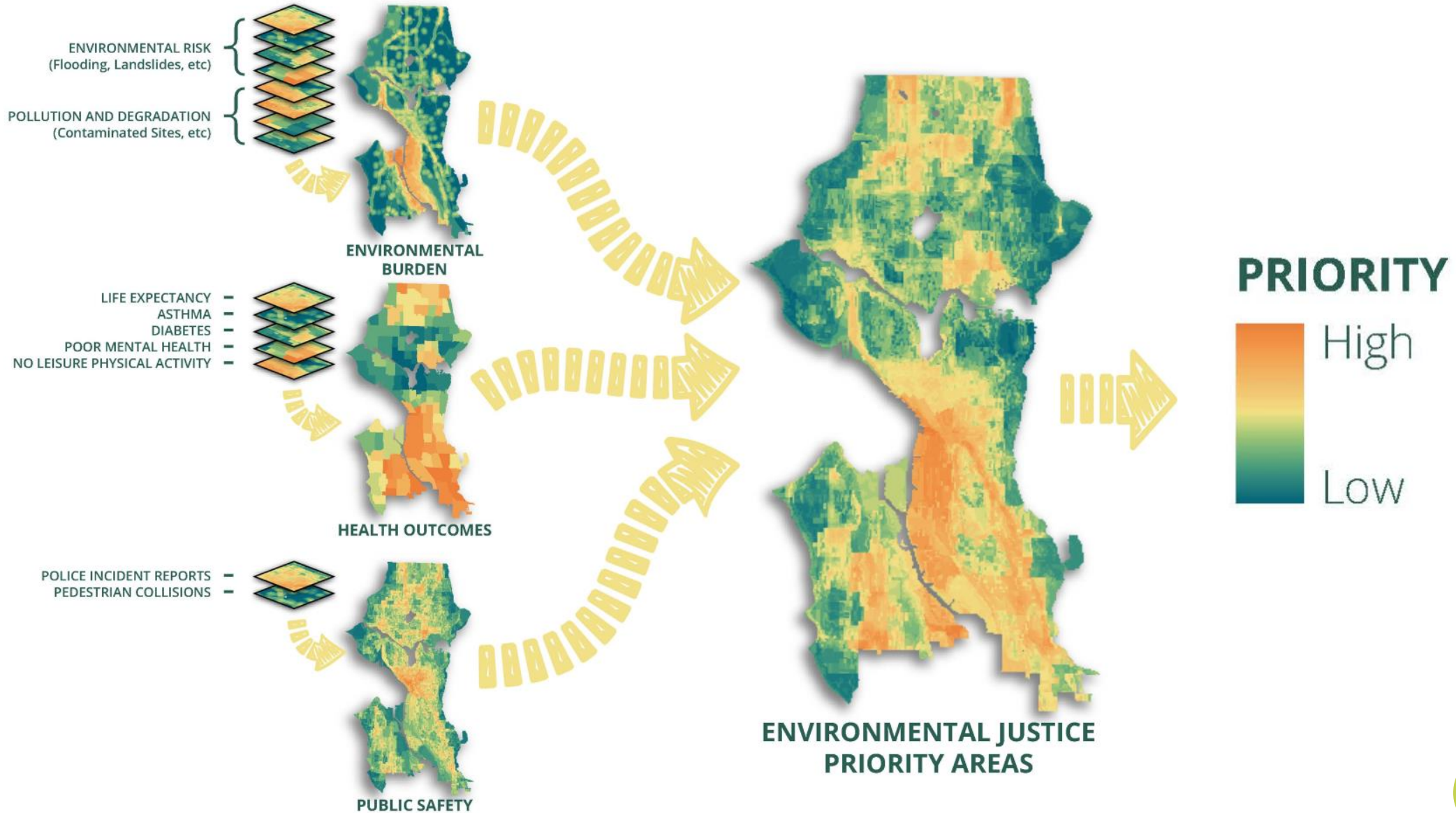
EQUITY



- Areas experiencing significant improvements in transit service
- Areas experiencing a growth rate significantly higher or lower than anticipated in the Comprehensive Plan
- Areas identified for multiple capital investments that could benefit from coordinated planning

GROWTH

CRITERIA: Areas experiencing environmental justice concerns including public health or safety concerns.



2018 Ongoing

- Capital Cabinet coordination
- Regional and Comprehensive Planning
- Population and Demographics
 - Fair Housing
 - Equity and Displacement analysis
- Equitable Development Monitoring
- GIS analysis

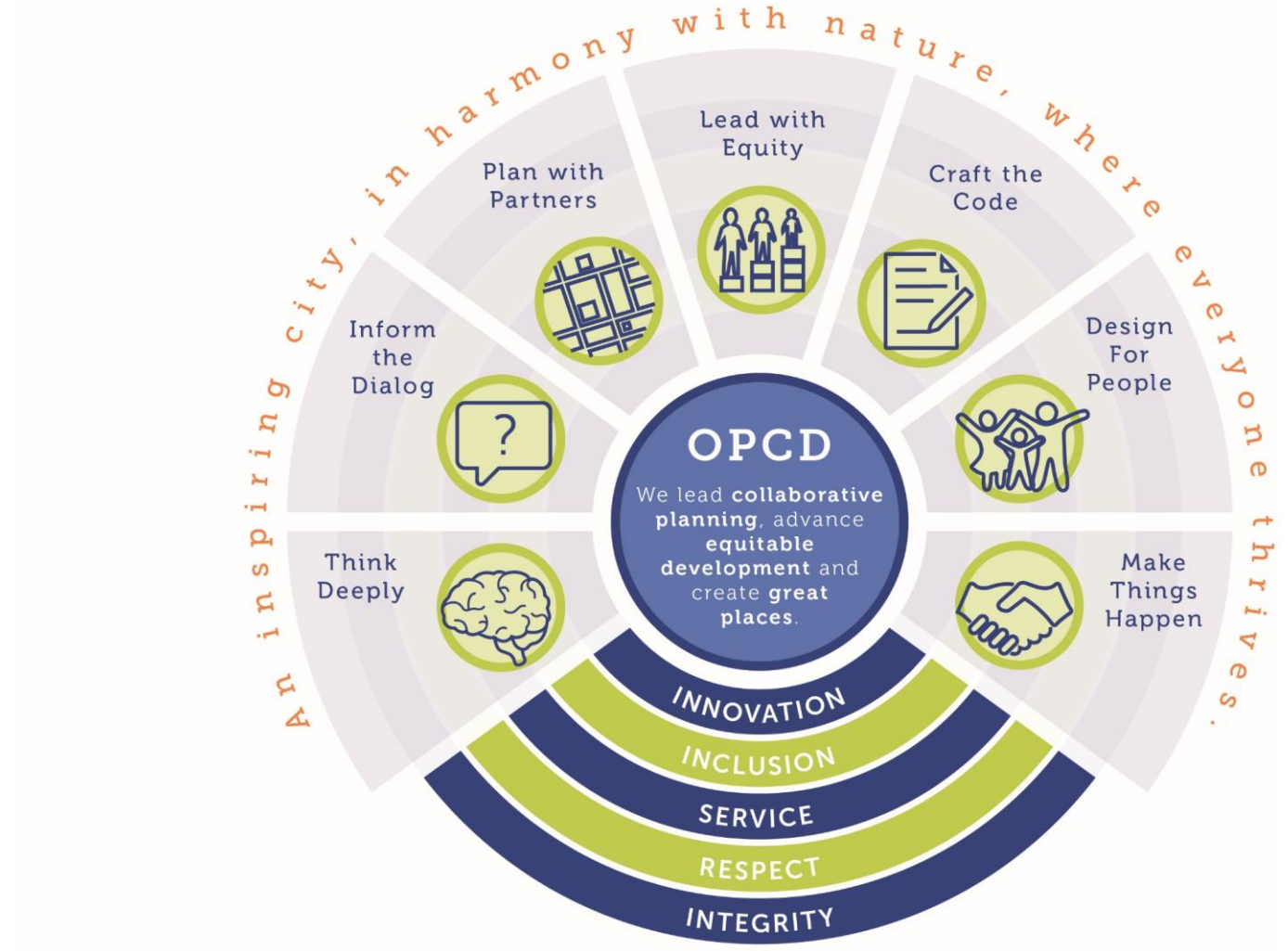


QUESTIONS?

Samuel Assefa, Director

Samuel.Assefa@seattle.gov

<http://www.seattle.gov/opcd>



OPCD

January 17, 2018

2018 OPCD Director's Report to Planning, Land Use, and Zoning Committee