



Introduction to SDOT

City Council Transportation Committee
February 6, 2024



Today's presentation

- SDOT mission & values
- Leadership & organization
- Lines of business
- How SDOT is funded

Our Vision, Mission, Values, & Goals

Seattle is a thriving equitable community powered by dependable transportation. We're on a mission to deliver a transportation system that provides safe and affordable access to places and opportunities.

Core Values & Goals:

Equity, Safety, Mobility, Sustainability, Livability, and Excellence.

Maintain a safe and functional public right of way



SDOT runs a 24/7 Transportation Operations Center in SMT



Signals

Traffic signal crews and engineers

- Optimize, operate and maintain >1,100 signals
- Install and maintain >500 Cameras
- Install and maintain over >1,000 Auxiliary Traffic Devices including DMS, Speed Signs, RRFBs, School Beacons and Overhead Warning Beacons
- Emergency response to damages 24/7
- Support for capital and SIP projects
- Support interdepartmental (SCL/SPU/KC Metro/Sound Transit) work





Transportation Ops, by the numbers

- ~150 Engineers, Planners, Data Analysis, Permit Specialist, Commercial Vehicle Enforcement Officers, Ops Center Operators and Signal Electricians
- Locations(s): Sunny Jim Traffic Shop & Seattle Municipal Tower 37th Floor
- Manage 24/7 operations of the transportation system including special event and emergency response
- In 2023 we:
 - Installed 99 Leading Pedestrian Intervals
 - Implemented over 73 intersections with No Turn On Red
 - Optimized five arterial corridors for improved operations for all users
 - Installed four traffic signals
 - Reviewed an Approved 1000s of Engineering and Traffic Control Plans
 - Completed Annual Traffic Report
 - Piloted Artificial Intelligence to support safety and data collection
 - Simulated and reviewed operation impacts for changes to the ROW
 - Received and review over 2300 customer service requests

Signs & Markings

Annual programs

- Restripe all arterials
- Remark 1,500 crosswalks
- Replace regulatory signs

Projects and maintenance

- Crash cushions
- Guardrails
- Decorative crosswalks
- Bike racks
- Protected bike lanes
- Red bus lane markings
- New sign install



Chief Safety Officer & City Traffic Engineer

Venu Nemani

- Key member of senior leadership team
- Provides clear voice for safety across department and the city
- Develops and implements safety plans and projects
- Guides traffic policy and influences national guidance
- Reviews claims and participates in Civil Court proceedings



Vision Zero Program

Launched in 2015, Seattle's goal to end traffic deaths and serious injuries on city streets by 2030

Key principles:

- Traffic deaths and injuries are unacceptable
- Humans make mistakes, are vulnerable and fragile
- Success hinges more on design of a safe system than on individuals
- Responsibility is shared
- Safety is proactive
- Redundancy is crucial

Highlights:

- Approaches safety in a responsive, proactive manner using data
- Leverages partnership and grant opportunities to promote safety
- Implements LPIs, NTORs, Traffic Calming etc.
- One major effort in the near-term is to implement Safe Streets and Roads for All - a \$25.654M federal grant



Customer Care, Dispatch & SDOT Response Teams

Customer service

- Manage Customer Care Center:
684-ROAD & 684-TREE
- Conduct outreach for crew projects
- Troubleshoot and respond to claims

24/7 operations teams

- Traffic incident management
- Seattle Response Team
- Radio dispatch
- Emergency response and hazard mitigation spill response and cleanup



Right of Way maintenance day & night shifts

- Snow and ice, windstorm, landslide response
- Street sweeping, Clean Streets Program
- Pothole repair
- Sidewalk shims
- Mowing vegetation
- Right of Way cleaning and maintenance
- Pavement crack sealing





Urban Forestry

Arborist Services

- Street tree ordinance and policy, permitting, inventory
- Claims investigation and response

Landscape Architect Services

- Design guidance /plan review
- Enforce land use requirements

Field Operations

- Maintenance and planting
- Customer service and safety
- Volunteer support program

SDOT's Emergency Operations mission essential functions

1. Maintain key arterial and waterway operations
2. Mitigate hazards in the public right of way (ROW)
3. Issue permits authorizing use of the public ROW
4. Disseminate critical transportation information

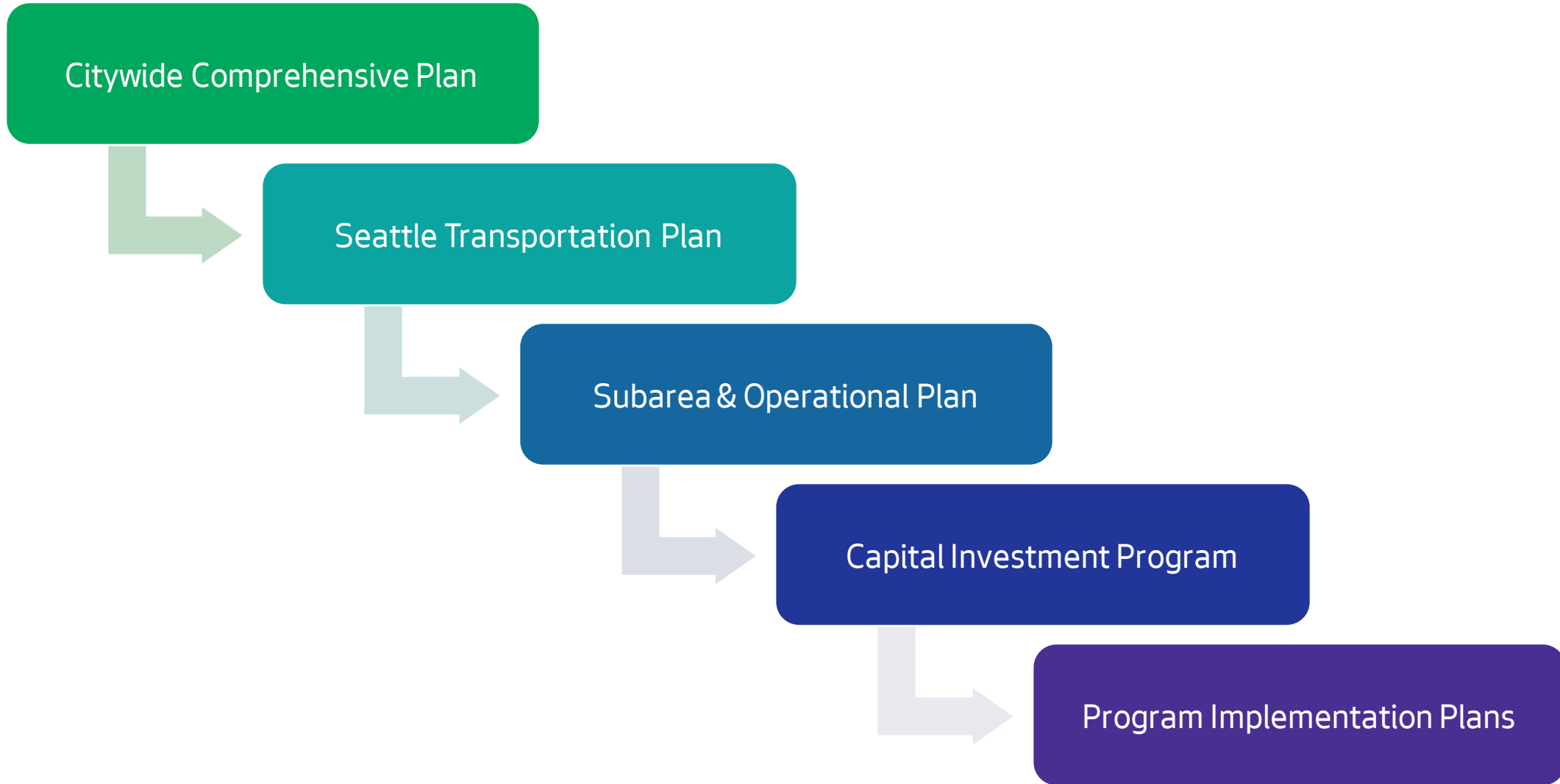


We train and prepare staff to implement response and recovery plans for Winter Weather, Emergency Bridge Closures, and other incident response needs.

Maintain and modernize transportation assets and infrastructure as stewards of public investments

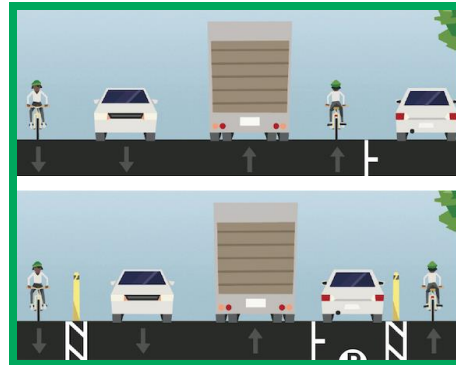


Visioning & Planning Tools



What is project development?

Project development is the process of scoping a project during 0-30% design. It is followed by 30-100% design and ultimately construction and project completion.



**Seattle
Transportation
Plan**



**Project
Development
(0-30%)**



**Project
Design
(30-100%)**



**Construction
and Completion**

Crew Project Delivery

- Designs and delivers 200+ crew-built projects annually
- Provides early design guidance and cost estimates
- Designs projects from roughly 30 to 100 percent design
- Coordinates construction with Maintenance Operations, Signal Operations, SPU, SCL, King County Metro, and others



Paving - Asphalt

- Asphalt shims
- Asphalt medium-large repairs
- Arterial and non-arterial paving
- Speed hump installment
- Utility cut restoration
- Pathway and alternative walkway construction



Paving - Concrete

- Street and sidewalk maintenance and restoration
- Concrete repairs
- Arterial and residential paving
- ADA ramp construction
- Sidewalk reconstruction
- Utility cut restoration
- Metro bus pad construction



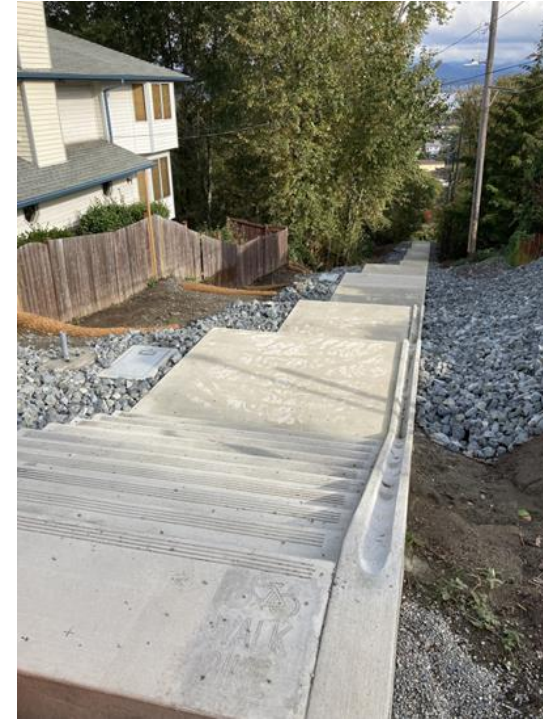
Capital Projects

Manage projects \$500,000 or more, and can include:

- Bridge repair, replacement, painting
- New bridges
- Major paving projects
- Major transit and multimodal projects
- Neighborhood walking and biking projects
- Seawall and retaining walls



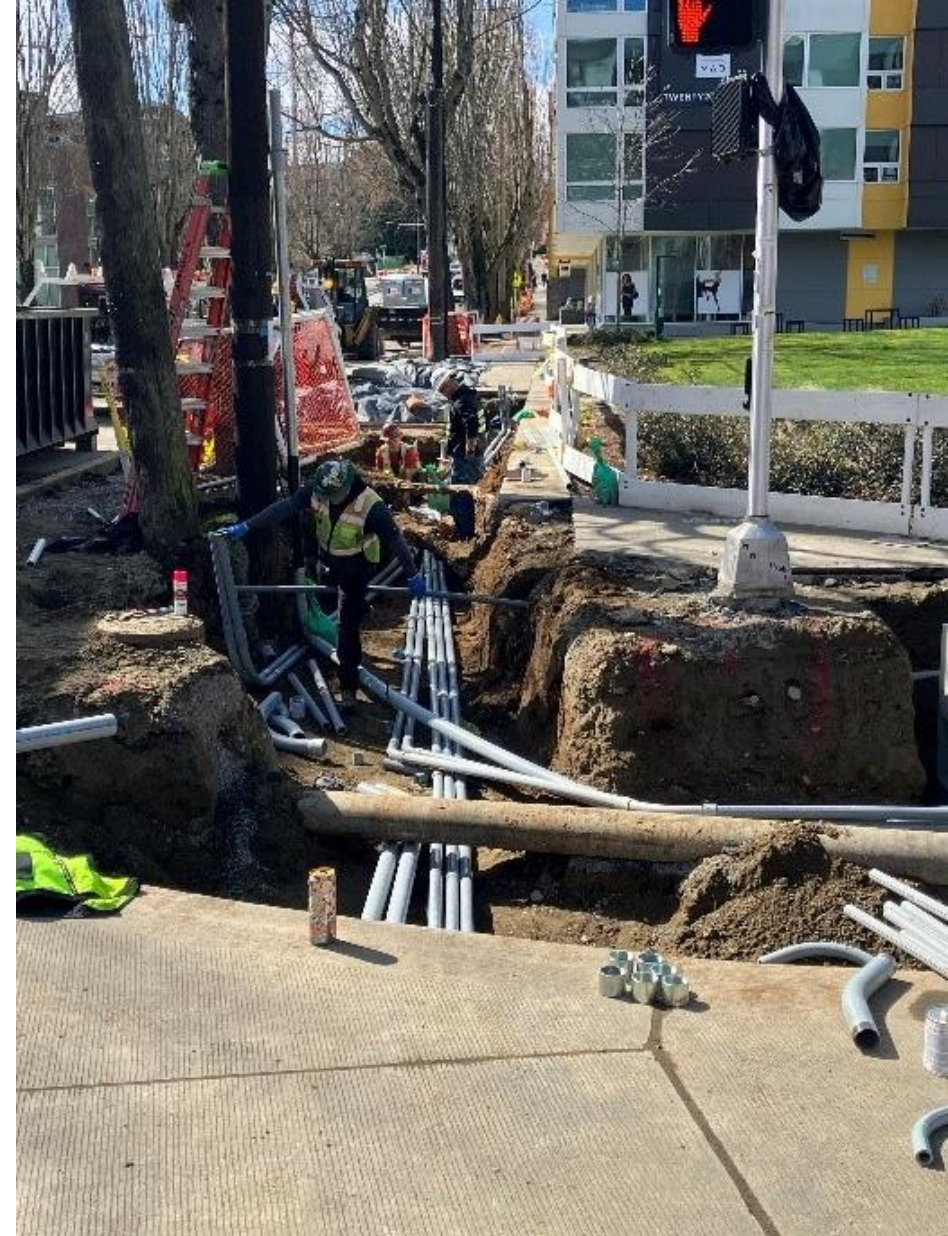
Capital Projects: recent projects



John Lewis Memorial Bridge, RapidRide H + Multimodal Corridor, S Henderson Stairs

2024 Capital Projects highlights

- Bridge Seismic Phase III projects
- Southeast Seattle Safety Projects
 - Martin Luther King, Jr
 - Beacon Hill
 - Georgetown to Downtown
 - Georgetown to South Park
- E Marginal Way Corridor Improvement Project
- RapidRide J + Multimodal Corridor
- 15th Ave Paving & Safety Project



E Denny Way westbound RapidRide station

Bridges and roadway structures, by the numbers



125

Bridges

\$7.53B



613

Retaining walls

\$1.3B



502

Stairways

\$79M



238

Areaways

\$208.5M



Manage assets valued at \$9.1 billion

Bridges & structures: metrics & accountability

- Average 14K movable bridge openings and 204 bridge inspections per year
- Average \$13M for non-levy capital program management, inspection, maintenance, and movable bridge operation per year
- Levy to Move Seattle deliverables include:
 - Bridge seismic reinforcement
 - Bridge spot repairs
 - Bridge planning
 - Public stairway rehabilitation and replacement



Enhance the transportation network and creating attractive places



Transit corridors & streetcars

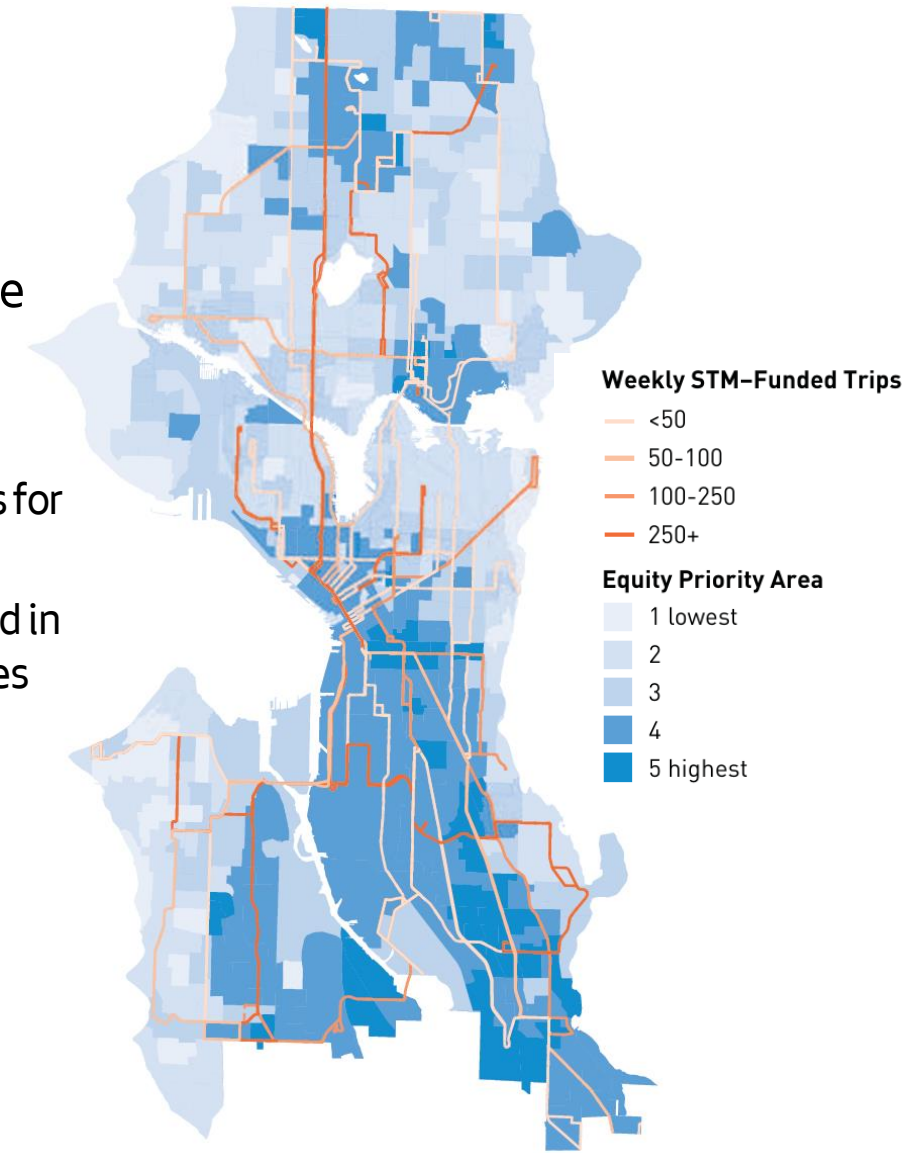
- **Streetcar System:** SDOT owned and Metro-operated. First Hill and South Lake Union streetcars; project owner for Culture Connector
- **Transit + Multimodal Corridors:** Levy to Move Seattle improves seven high ridership corridors
- **Transit Spot Improvements:** Capital improvements to support frequent reliable buses and streetcar service



Seattle Transit Measure

- 80% of voters approved, revenue collected 2021- 2027, supports:
 - 145,000 hours of Seattle transit service purchased from Metro
 - Transit capital improvements to support frequent, reliable bus service
 - Transit access subsidies and programming for youth, low-income residents, and seniors, including:
 - Seattle Housing Authority Transit Pass Program: fully subsidized ORCA cards for SHA residents; 6,850 ORCA cards distributed; ~100,000 boardings/month
 - Downtown Circulator: A free, fixed-route shuttle through downtown operated in partnership with Solid Ground, connecting low-income riders to social services
- **Development of transit policies and regional transit planning**
- **Maintain strategic regional partnerships**

Routes with STM Investments and
Equity Priority Areas - December 2022



Mobility Solutions

- **Bike, scooter and car share:** Policy and program management of up to 3,500 bikes, 7,000 scooters, and 350 hybrid cars
- **Emissions reduction:** Engage ~ 270 worksites in commute trip options; Work with stadiums/events to encourage less driving
- **Automation:** Anticipate and adapt to autonomous vehicle deployments - AV permit program!
- **Transportation electrification:** Support charging on streets and push for clean technology in partnership with OSE and City Light
- **Policy and strategies for emerging mobility**



ADA Program

- Oversee federal compliance requirements, training, and policy development
- Responsible for Dept. of Justice Consent Decree curb ramp oversight which requires SDOT to build 1,250 ADA curb ramps annually through 2035
- Respond to Customer Service Requests for curb ramps and audible pedestrian signals
- Liaison to Pedestrian Access Advisory Committee



Pedestrian Programs & Safe Routes to School

New sidewalks

- Builds about 25 blocks of new walkways annually and has delivered nearly 250 blocks through the Levy to Move

Safe Routes to School

- Delivered safety improvements at every public school through Levy to Move Seattle

Pedestrian crossing improvements

- Delivers new crosswalks, curb bulbs, and leading pedestrian intervals at a minimum of 16 intersections per year through Levy to Move Seattle



Kenyon Way S Before



Kenyon Way S After

Neighborhood Greenways + Home Zones

- **Neighborhood Greenways/Healthy Streets**
 - Creating safer, calmer neighborhood streets and arterial crossings where people walking and biking are the priority; SDOT will deliver about 60 miles of Greenways through LMS
- **Home Zones**
 - Working with communities to create holistic plans for traffic calming and more pedestrian friendly streets





Bicycle Program & Neighborhood Street Fund

- Protected Bicycle Lanes (PBLs)
 - Improve safety by providing dedicated space for people biking by delivering more than 40 miles of PBLs through the Levy to Move Seattle
- Urban Trails and Bikeways
 - Delivers maintenance and capital improvements for Seattle's multiuse trail system
- Neighborhood Street Fund
 - Community-driven program that builds a wide range of transportation projects

Urban design recent work

- **Detective Cookie Chess Park** - A space for youth in Rainier Beach
- **Portal Porch** - A new public open space in Belltown
- **Thomas St Redefined** - Landscaped bike/ped corridor to Seattle Center
- **Ballard Ave Café Street** - Activation and access on Ballard Ave
- **Wayfinding** - Support walking journeys during 2023 MLB All Star Game and 2026 FIFA World Cup
- **Public art** to support activation and walkability in equity priority neighborhoods
- **Third Ave and Yesler Way Safety Improvements** - Improving walking, biking, and transit access in historic Pioneer Square



Interagency programs & projects

- Engage with other cities, Sound Transit, the Port, and WSDOT
- Employ mix of engineering, public engagement, and utility and permitting expertise to guide projects with shared boundaries



SR 520 Bridge Replacement and HOV Program

Sound Transit 3 (ST3)

At \$12 billion, the W Seattle and Ballard Link Extensions are the largest infrastructure projects in City history.

These projects bring great opportunity for transformation, and potential for significant impacts as they are constructed through our communities.



Regulating the ROW



Parking

- Manage 12K on-street paid parking spaces; make regular data-driven rate adjustments to meet SMC target of 70 - 85% occupancy
- 75%+ of on-street paid parking transactions via mobile device
- Issued over 850 work instructions in 2023 in response to customer requests for changes to parking, loading
- Oversee Restricted (Residential) Parking Zones - 35 zones and 20k permits issued annually
- Prioritize critical access needs at the curb: loading for people, goods; restaurant and retail pick-up zones
- Addressing emerging needs at curb: e-cargo bikes, musician loading



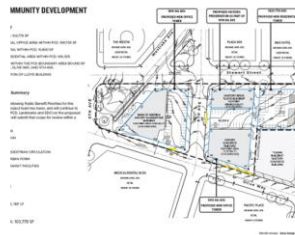
Street Use the stewards of public right-of-way (ROW)

Permit Services



- Customer service
- Permitting
 - ROW management
 - Minor utility
 - Maintenance

Operations



- Major infrastructure permits
- Shoring and landslide mitigation
- Development Review

Inspections



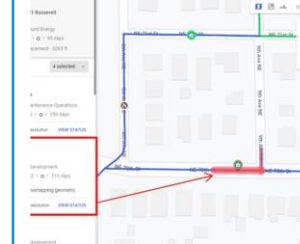
- Construction inspections
- Construction service request response
- Emergency response

Public Space Management



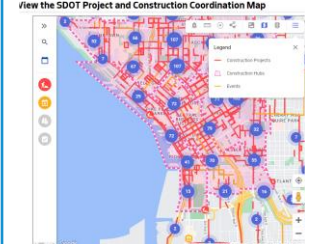
- Long-term uses and vacations
- Shoreline Street Ends
- Community-oriented public space use
- ROW enforcement

Data and Geographic Info Systems



- Reporting
- Performance metrics
- GIS and mapping

Construction Coordination



- ROW construction scheduling
- Construction Hubs

Street Use: by the numbers



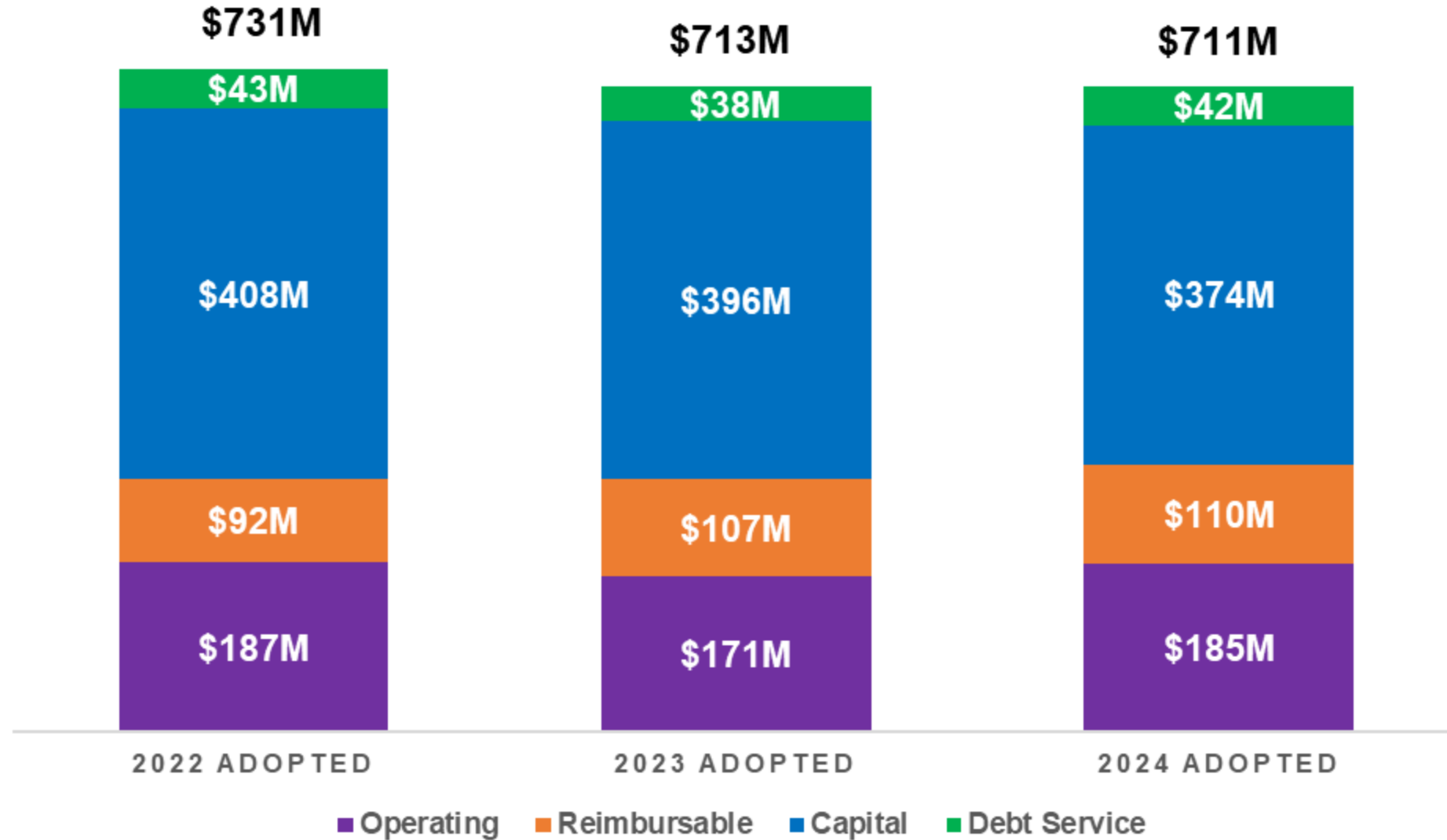
In 2023, we:

- Processed over 16,000 applications
- Issued over 12,000 permits
- Completed 38,000 inspections
- Scheduled & coordinated 2,000 construction closures in Hubs
- Reviewed over 700 Preliminary Assessment Reports
- Responded to over 2,000 Service Requests

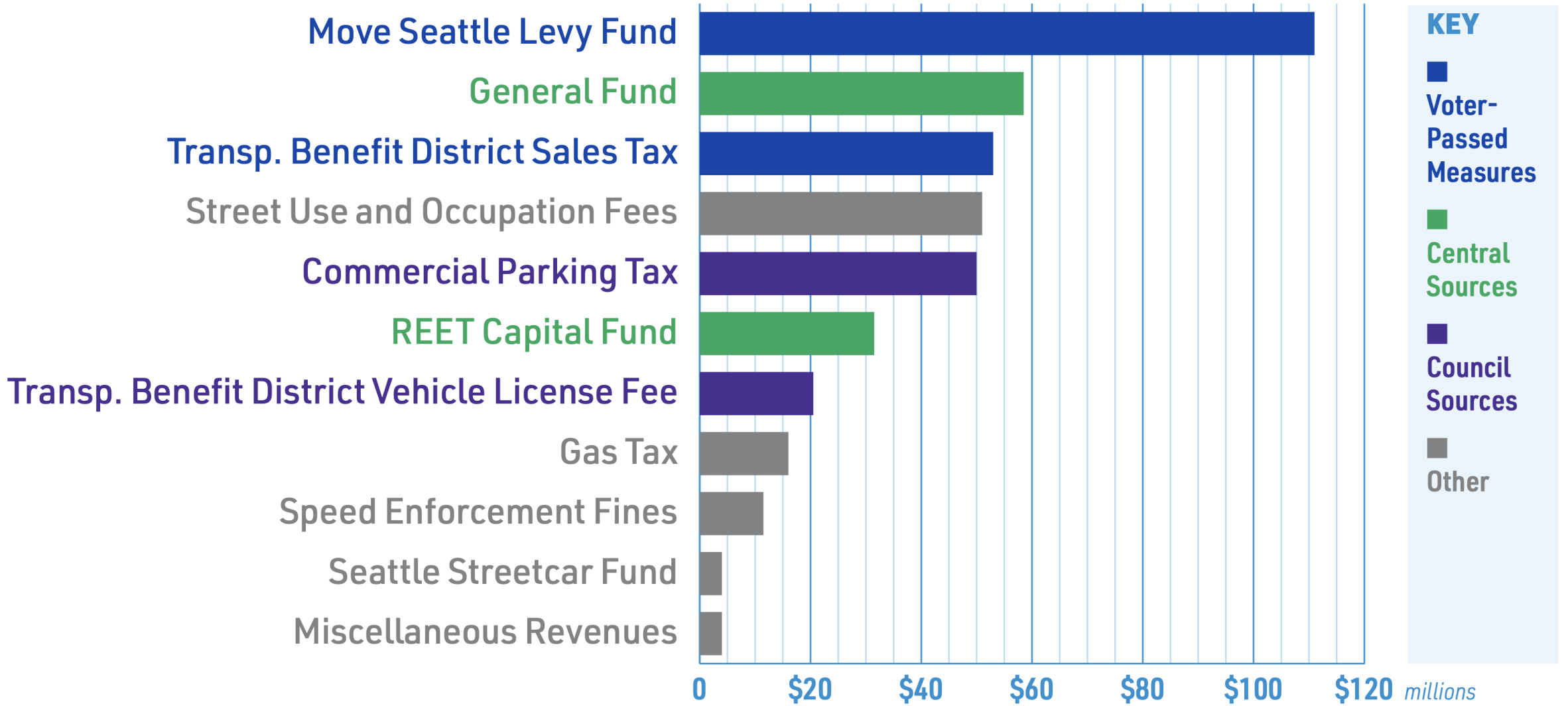
How SDOT is funded



SDOT Adopted Budget History (2022-2024)



SDOT's 2024 Budget by Funding Source



A large group of approximately 40 construction workers, including men and women, are posed for a group photo. They are wearing various safety gear, including hard hats in white, blue, and red, and high-visibility safety vests in orange, yellow, and green. They are standing on a paved surface in front of a line of white utility trucks. The trucks have various equipment mounted on their backs, including ladders and toolboxes. The background shows green trees and a clear sky. The entire image has a blue overlay.

From the entire SDOI Team:

Thank you!

