



Seattle City Light

A large concrete dam with multiple arches spans across a wide river. The dam is surrounded by lush green forest and mountains in the background. The water in the foreground is a vibrant green color. The dam has several decorative pillars along its top edge. The sky is clear and blue.

SKAGIT COUNTY INTERLOCAL AGREEMENT

City Light/Denise Krownbell

May 19, 2021

SKAGIT COUNTY INTERLOCAL AGREEMENT

- Transfers ownership of County lot (21,780 sq.ft.) to City at no cost
- Places lot under jurisdiction of City Light's Endangered Species Act Land Program
 - Lot adjacent to other City Light conservation parcels
 - SCL ownership facilitates restoration to meet ESA Land Program objectives of which grant funds are already in hand



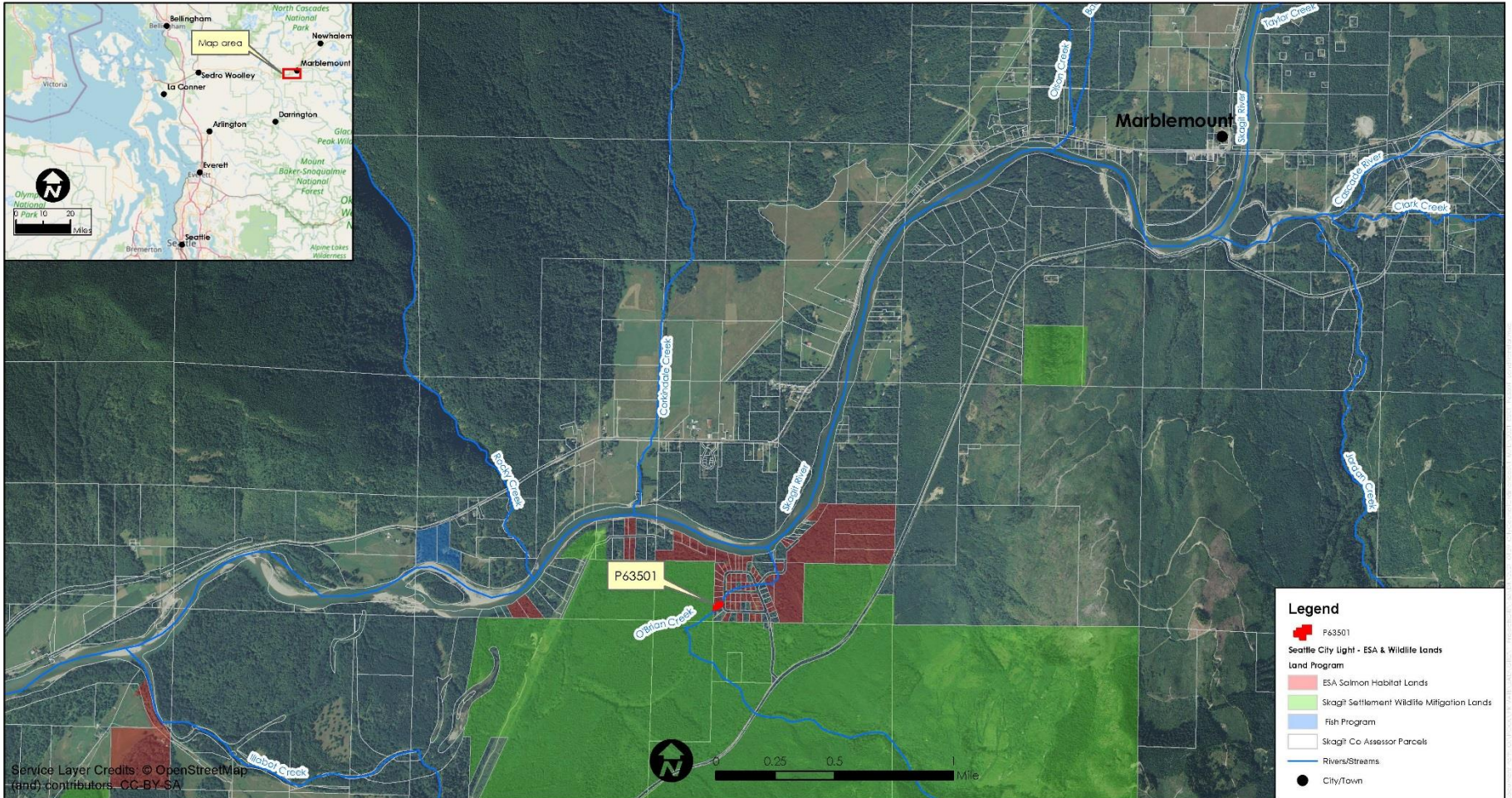
ENDANGERED SPECIES ACT LAND PROGRAM

- Began in 2000 with the ESA listing of Chinook salmon and bull trout.
- Focus on fish habitat in the Skagit and Tolt watersheds.
- Part of the mitigation for the ESA Incidental Take Statement for the Skagit License.
- 3,700 acres purchased and protected thus far.
- Since 2000, \$5.9M SCL funds and \$5.2M grant dollars spent in Skagit watershed.



Map of Parcel Property

This map is intended for illustrative or informational purposes only and is not intended to modify anything in the legislation.



Service Layer Credits © OpenStreetMap (and) contributors, CC-BY-SA