



SEATTLE CITY COUNCIL
CENTRAL STAFF

4726 15th Avenue NE Rezone (CF 314359)

Excerpts from the Hearing Examiner's Exhibits

LISH WHITSON
COUNCIL CENTRAL STAFF

PLANNING, LAND USE, AND ZONING COMMITTEE
SEPTEMBER 4, 2019

CLERK FILE 314359

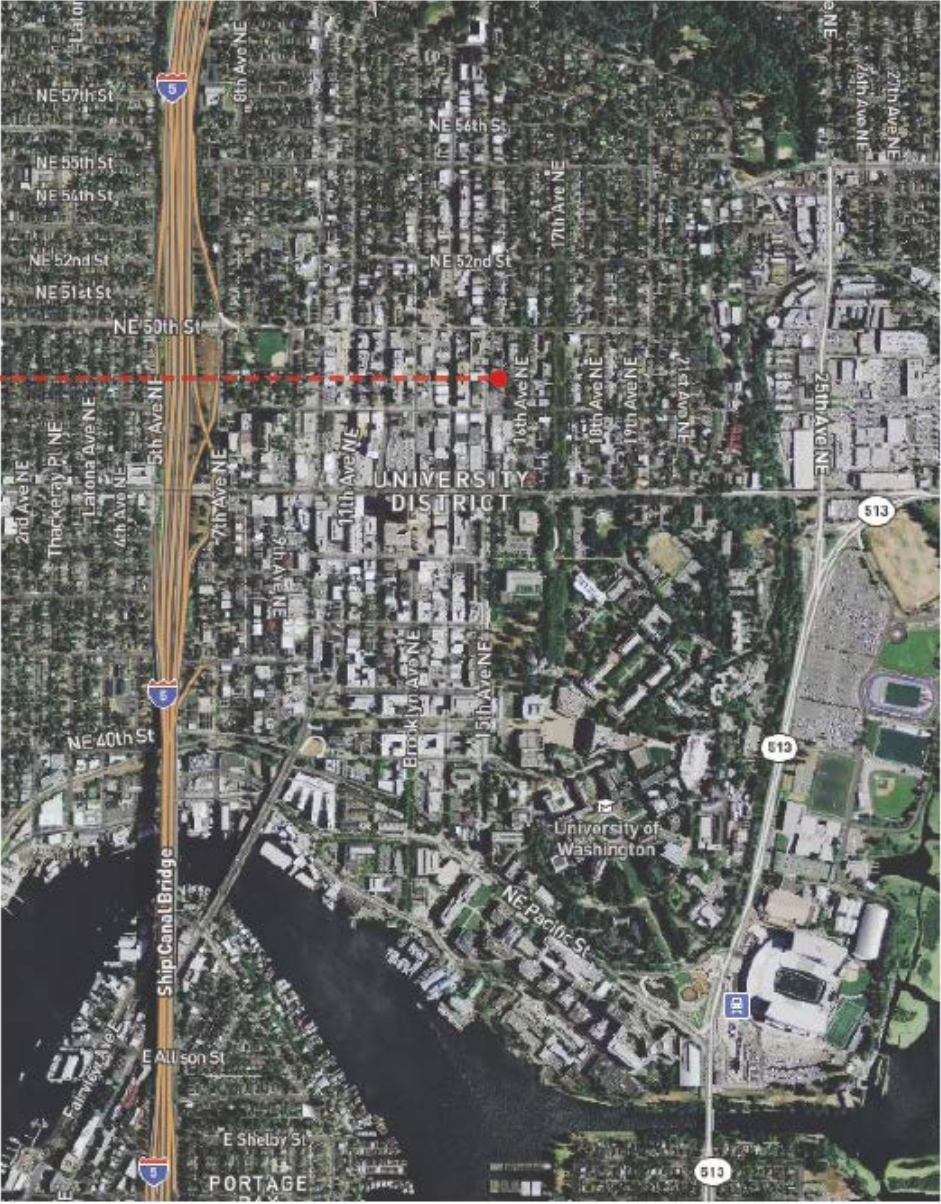
Was:

Application of Yuan's H&H Property, LLC to rezone an approximately 4,320 square foot site located at 4726 15th Avenue Northeast from Lowrise 3 (LR3) multifamily residential to Neighborhood Commercial 2 with a 65 foot height limit (NC2 65) (Project Number 3025193; Type IV).

Should be:

Application of Matt Driscoll to rezone an approximately 4,320 square foot site located at 4730 15th Avenue Northeast from Lowrise 3 (M) (LR3 (M)) multifamily residential to Neighborhood Commercial 2 with a 65-foot height limit (M1) (NC2-65 (M1)) (Project Number 3025193; Type IV).

LOCATION



CURRENT ZONING



© 2019, THE CITY OF SEATTLE, all rights reserved. No warranties of any sort, including accuracy, fitness or merchantability, accompany this product. Coordinate System: State Plane, NAD 83-81, Washington North Zone | Vertical Datum: North American Vertical Datum of 1988 (NAVD88). Map produced by DPD GIS Viewer | Department of Planning and Development - IT GIS.

7/2/2019

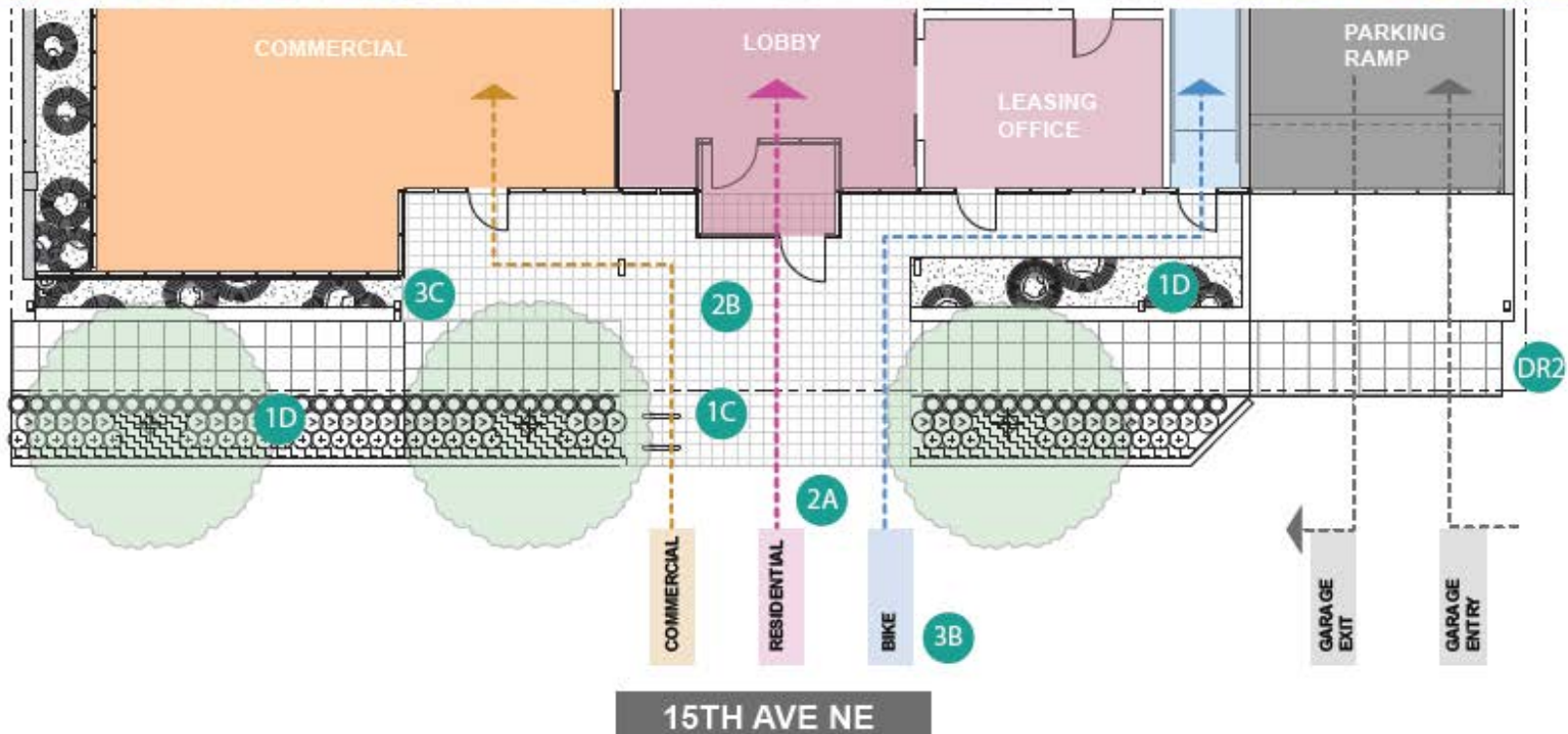
PROPOSED MASSING



PROPOSED STREETScape



STREET LEVEL DESIGN



Questions?

Lish Whitson

Seattle City Council Central Staff

lish.whitson@seattle.gov