



# Seattle Freight Master Plan

City Council Transportation Committee

Gabriela Vega and Ian Macek

September 11, 2015

# Our mission, vision, and core values

**Mission:** deliver a high-quality transportation system for Seattle

**Vision:** connected people, places, and products

Committed to **5 core values** to create a city that is:

- Safe
- Interconnected
- Affordable
- Vibrant
- Innovative

For **all**

# Presentation overview

- Plan framework
- Supply chain
- Future conditions analysis
- Freight network
- Next steps



# Policy framework

Vision	Goals
<p>A vibrant city and thriving economy connecting people and products within Seattle and to regional and international markets.</p>	<p><b>Economy</b> Provide a freight network that supports a growing economy for Seattle and the region.</p>
	<p><b>Safety</b> Improve safety and the predictable movement of goods and people.</p>
	<p><b>Mobility</b> Reliably connect manufacturing/industrial centers and business districts with the local, state, and international freight networks.</p>
	<p><b>State of Good Repair</b> Maintain and improve the freight transportation network to ensure safe and efficient operations.</p>
	<p><b>Equity</b> Benefit residents and businesses of Seattle through equity in freight investments and improve the health of communities impacted by freight movement.</p>
	<p><b>Environment</b> Improve freight operations in Seattle and the region by making goods movement more efficient and reducing its environmental footprint.</p>



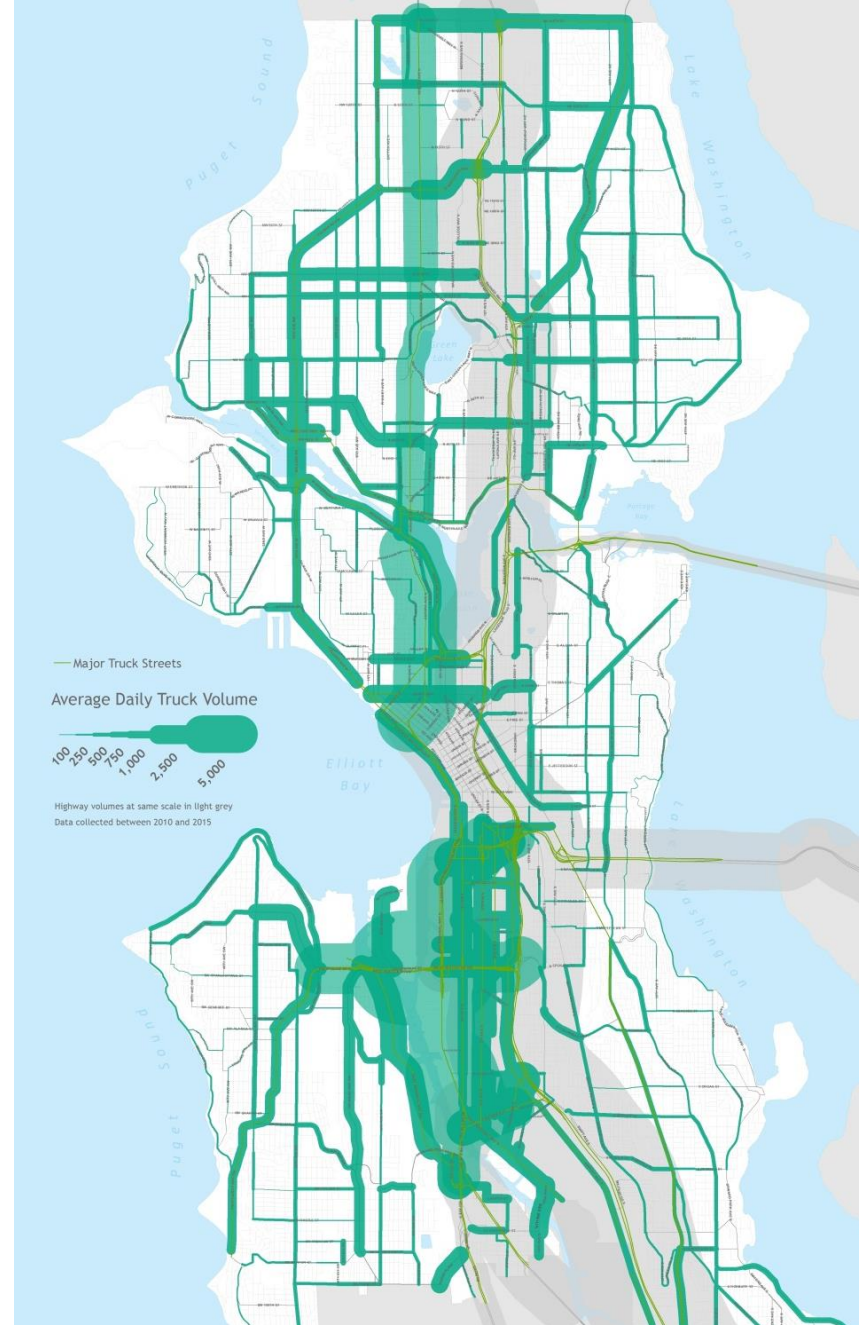
# Supply chain



SDOT is updating the city's Freight Master Plan and we want your input. Please visit [seattle.gov/transportation/freight\\_fmp.htm](http://seattle.gov/transportation/freight_fmp.htm) to learn more.

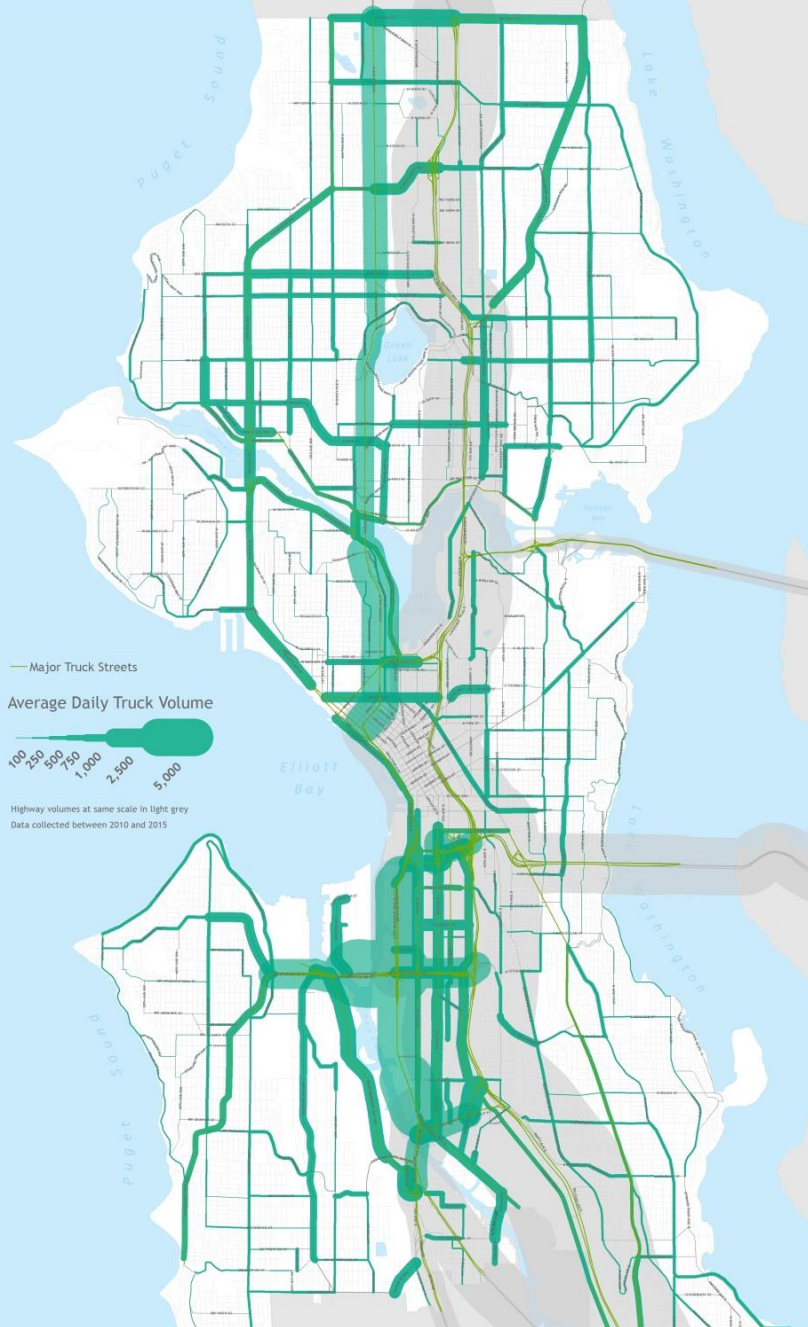
# Future conditions analysis

- Truck volumes over 4 years
- Establish baseline for Freight Master Plan
- Developed growth factors based on freight employment sectors

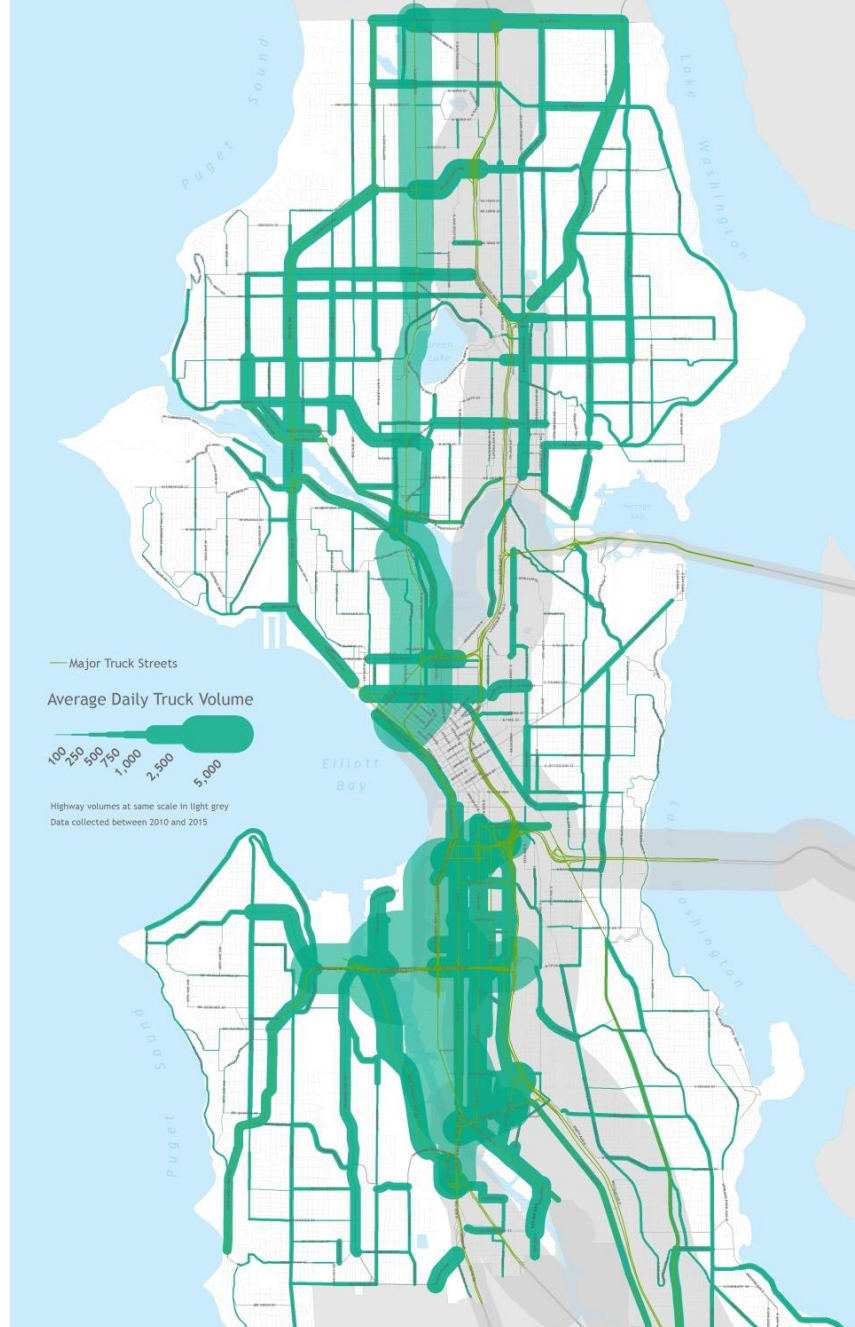


2035 truck volumes





2014 truck volumes



2035 truck volumes

# Purpose of freight network

- Define freight network to direct future investments
- Develop associated design guidelines





# Freight network criteria

Criteria	Limited Access Facility	Major Truck Street	Minor Truck Street	First/Last Mile Connectors
Functional Purpose	Long Distance Trips	Through Trips	To/Through	To Industrial Destinations
Supports Freight-Generating Land Uses	Primary connections between industrial centers and the rest of the region	Main connections between industrial land use (MICs and intermodal terminals), commercial districts and urban centers	Provides connections between urban villages; commercial distribution network	Access to industrial uses
Roadway Classification	Highway	Minor arterial or higher	Minor arterial or higher	Minor arterial or lower
Truck Volume	All Volumes	500+ trucks per day	500+ trucks per day	250+ trucks per day

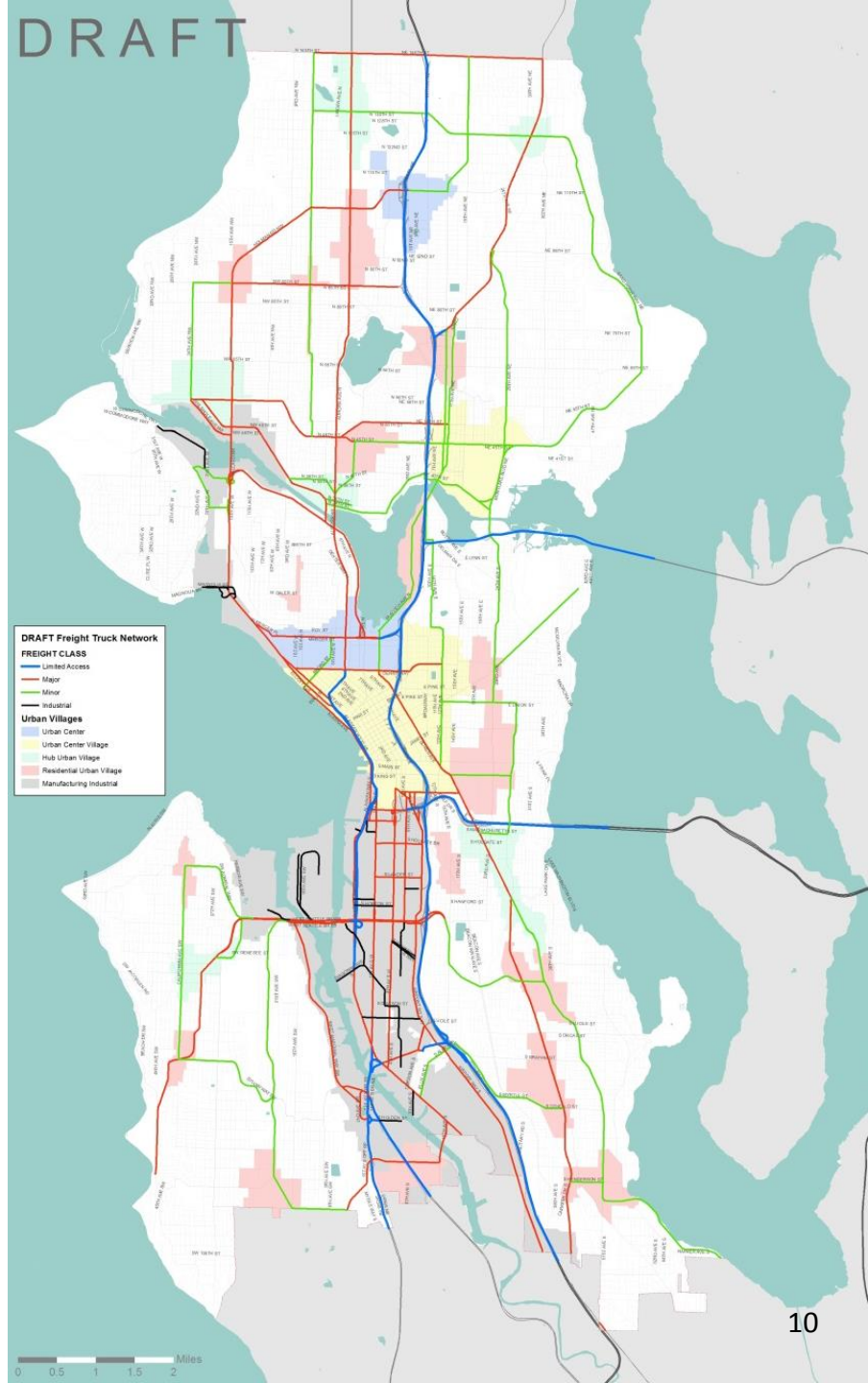
# Draft freight network map

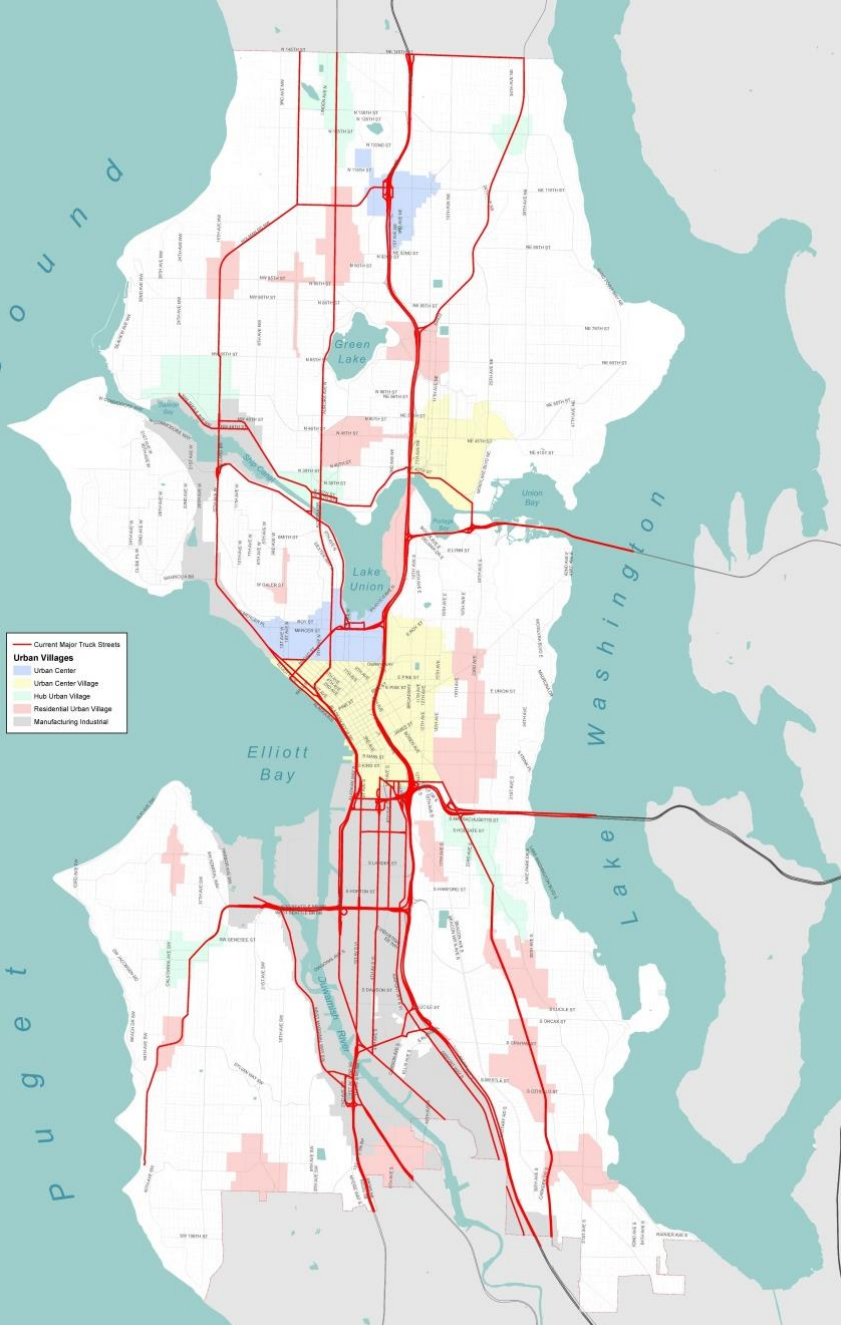
## Designation

- Limited Access
- Major
- Minor
- Industrial

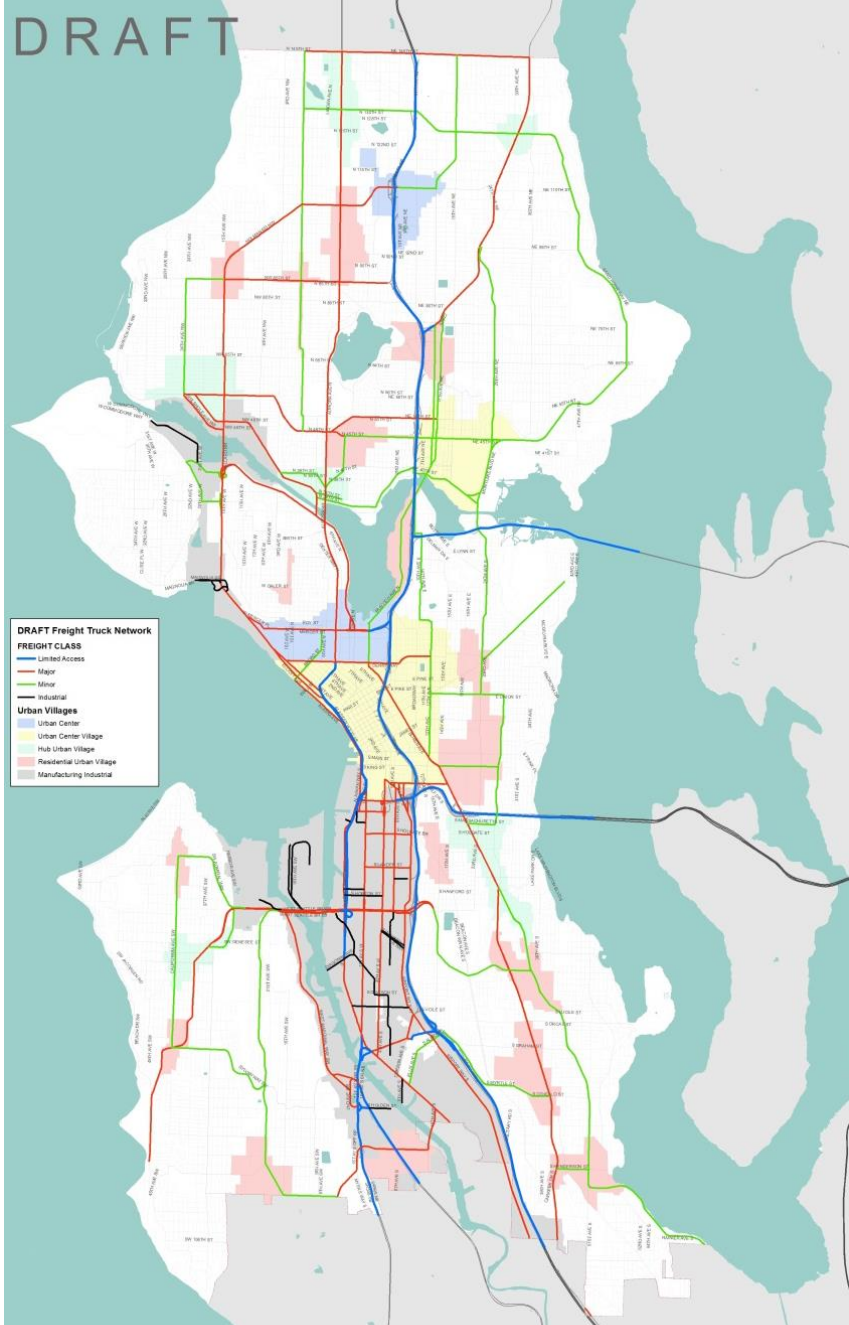
## Urban Villages

- Urban Center
- Urban Center Village
- Hub Urban Village
- Residential Urban Village
- Manufacturing Industrial





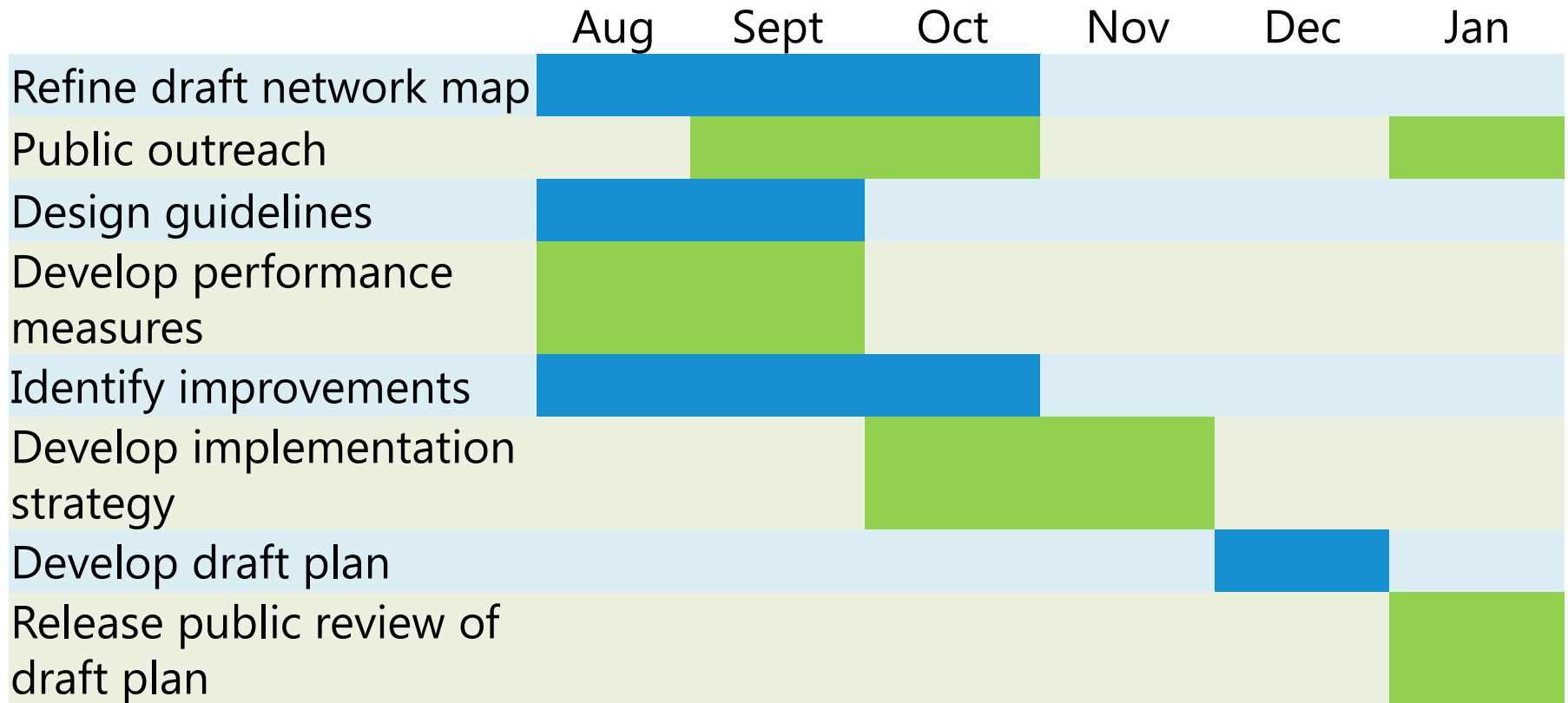
Current network



DRAFT network



# Next steps



# Open houses

## BALLARD

Monday, September 28

5:30 to 7:30 PM

Ballard Branch Seattle Public Library

Library Meeting Room

5614 22nd Ave NW

## GEORGETOWN

Tuesday, October 6

5:30 to 7:30 PM

South Seattle College Georgetown Campus

Building C, Room C110-111

6737 Corson Ave S

# Questions?

[gabriela.vega@seattle.gov](mailto:gabriela.vega@seattle.gov) | (206) 733-9029

[ian.macek@seattle.gov](mailto:ian.macek@seattle.gov) | (206) 684-7576

[www.seattle.gov/transportation/freight.htm](http://www.seattle.gov/transportation/freight.htm)

[www.seattle.gov/transportation](http://www.seattle.gov/transportation)

