



Seattle-Centric Policing

Policing Forward

June 2025

Seattle-Centric

Policing Forward

- Integrated partnerships
- Community Centered
- Crime and Harm Focused
- City Supported
- Service Oriented



Seattle-Centric

Policing Forward

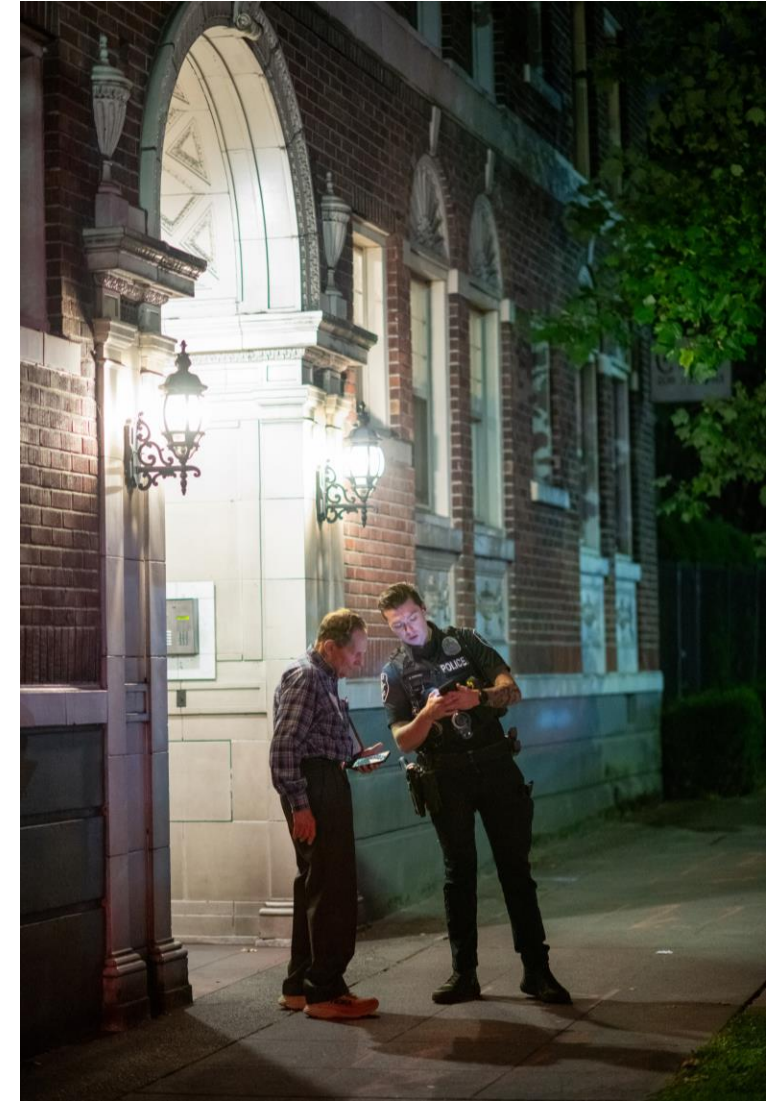
- Seattle-Centric Policing as a plan is a living document.
- With input from partners, it will be reviewed and updated every 18 months.



Police Crime Prevention

Seattle police will promote public safety and security through community problem solving and partnerships. The desire is safety and security. The means is through community-partnered problem solving.

“Policing is a public service that necessitates community and government engagement, trust, and cooperation to prevent and deter crime and disorder.” Chief Barnes



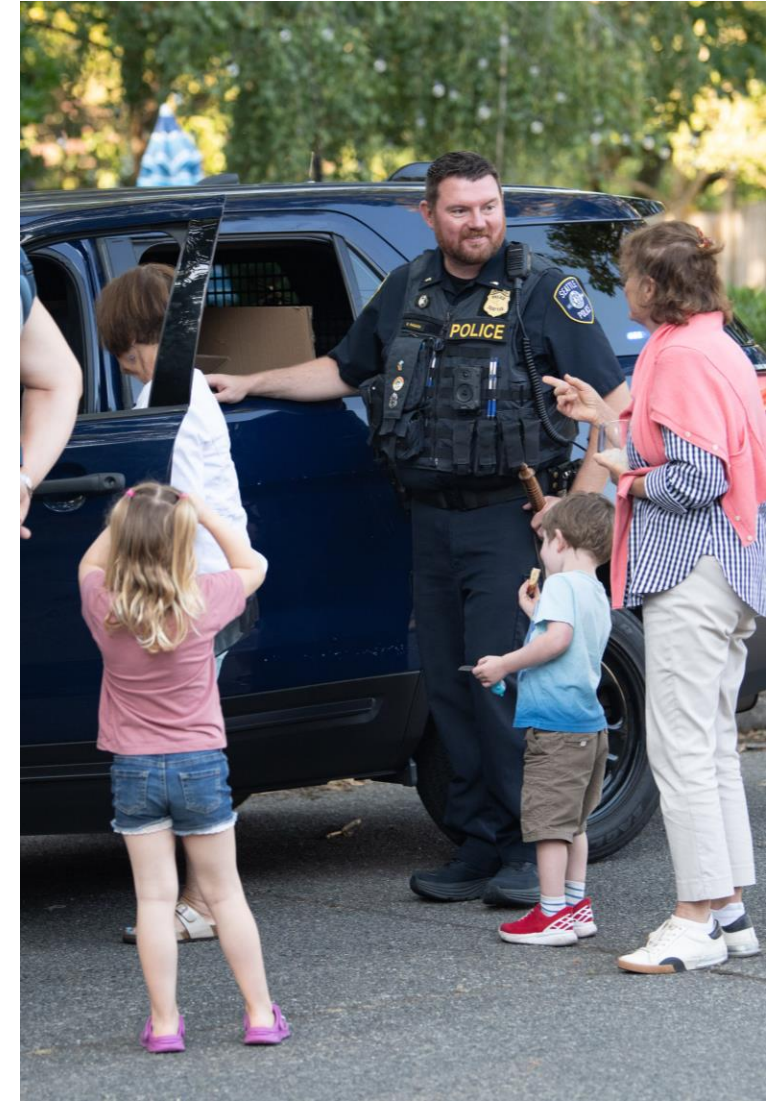
Police Crime Prevention

Evidence-Based Strategies Stratified Policing

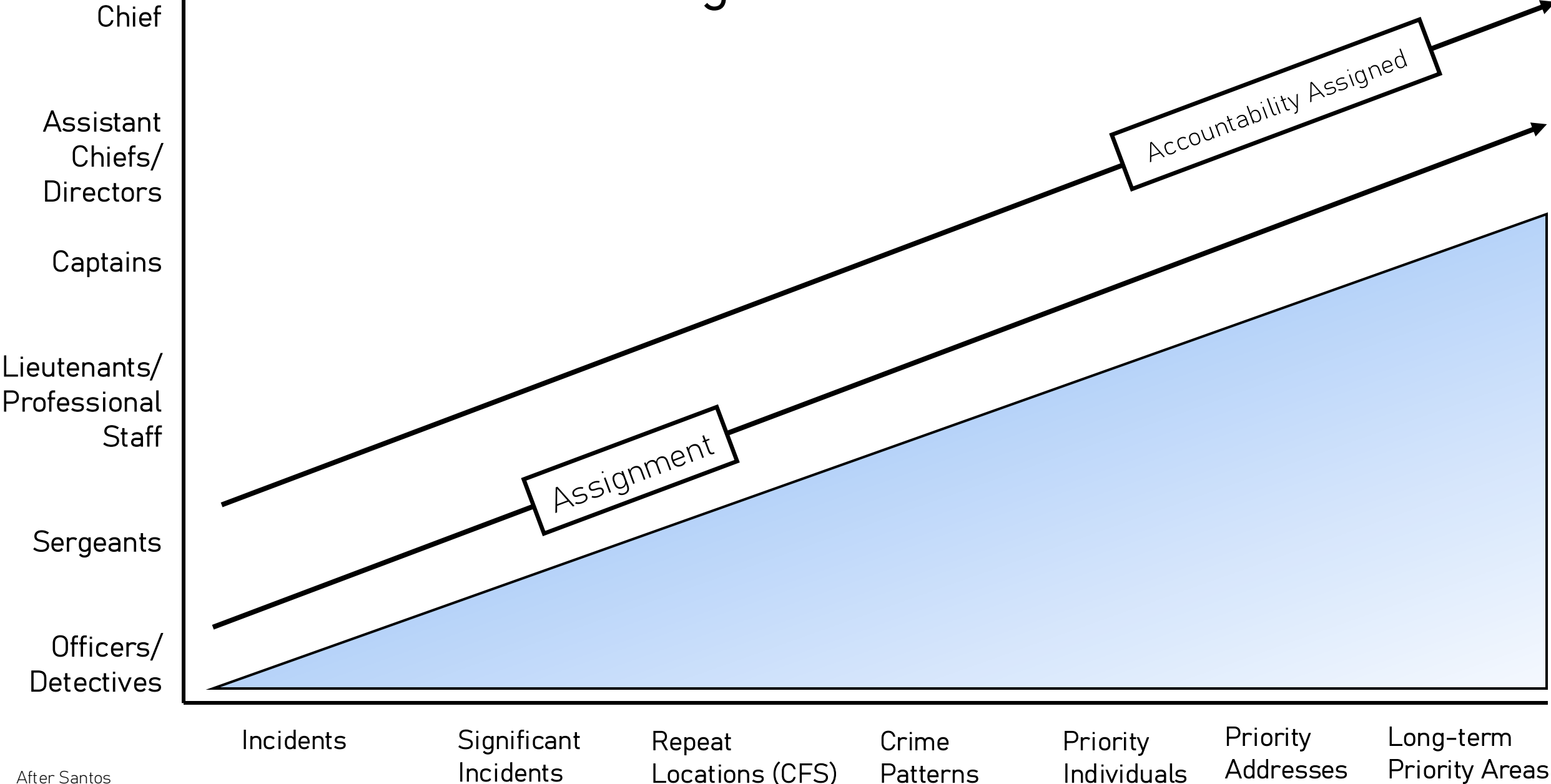
- Community-Oriented
- Problem-Oriented
- Focused Deterrence

Everyone within SPD has a role. Officer to the Chief.

“We commit ourselves to being a national model for expectational policing through the use of evidence-based policing strategies.” Chief Barnes



Stratified Policing: Seattle-Centric



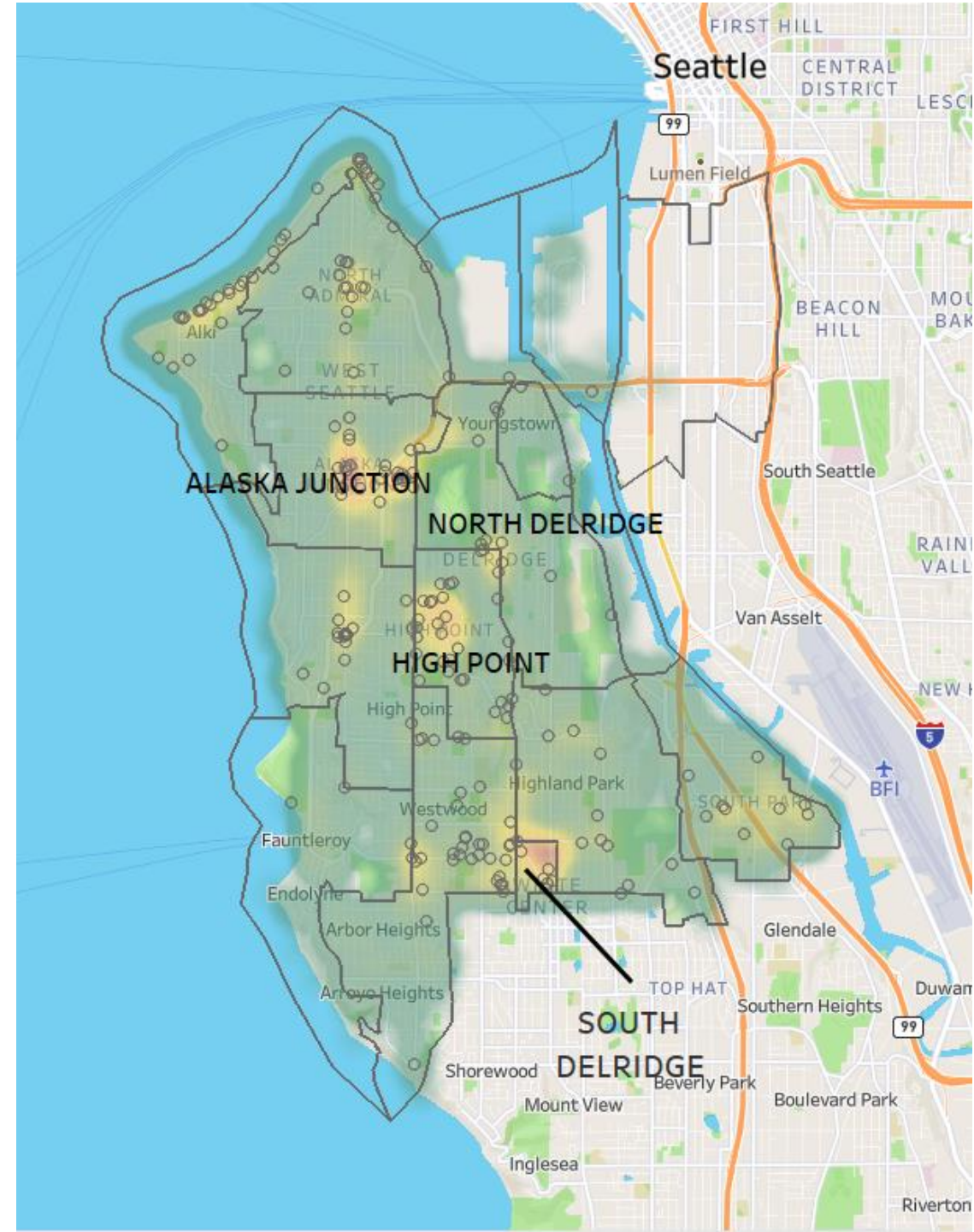
Example Priority Area Map for Southwest Precinct.

The boundaries are the Micro-Community Policing Plans

North Delridge, Alaska Junction, High Point, and South are the Priority Areas

The Precinct will systematically and proactively respond and engage with stakeholders in these communities.

The hotspots are YTD for violent and property crime. The small circles are locations of individual events.



Police Crime Prevention

Immediate Significant Incident Categories:

- Homicide
- Robbery
- Aggravated Assaults
- Stolen Vehicles
- Theft from Vehicles
- Burglary
- Firearm use

“Establishing Goals for our crime and harm and disorder categories”

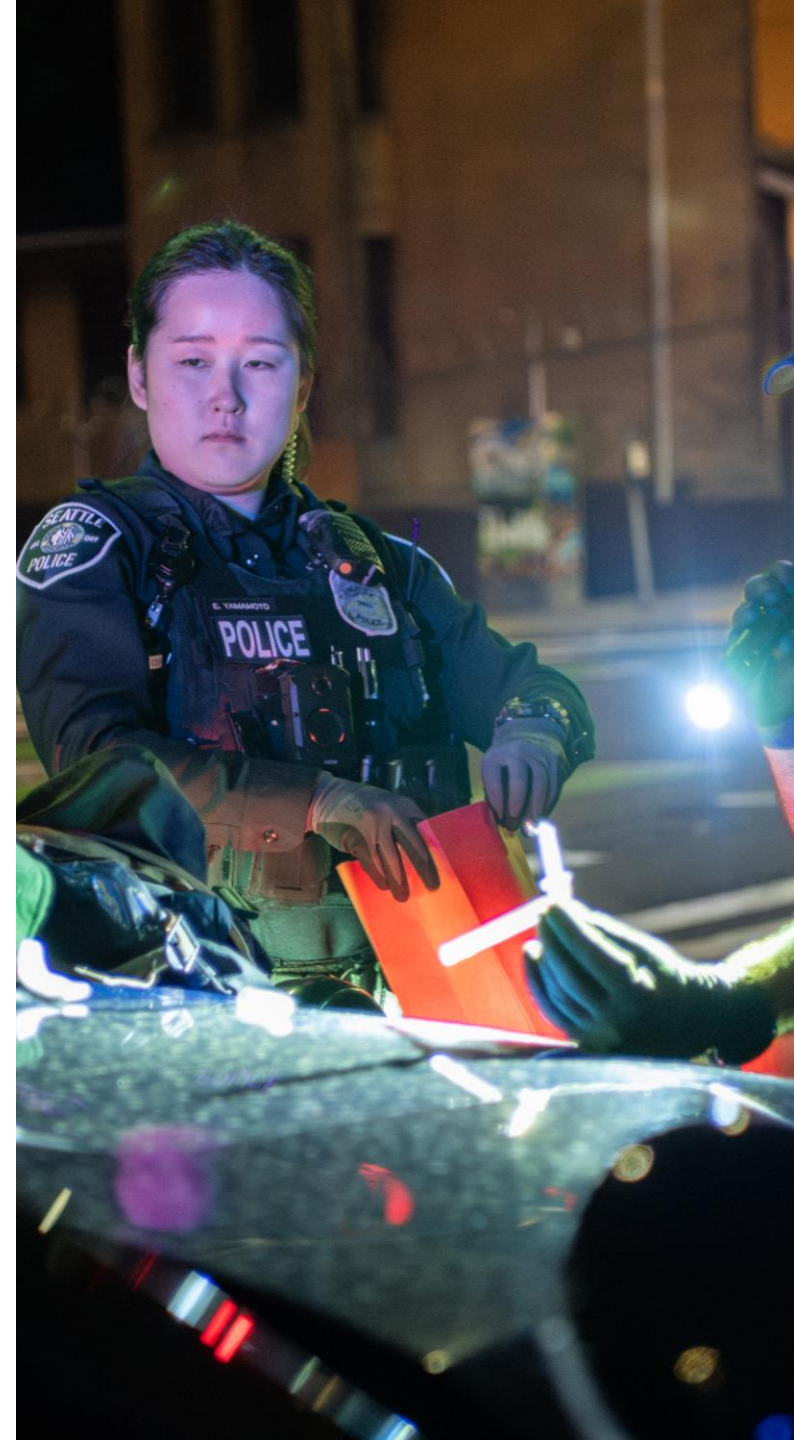


Police Crime Prevention

Long-term Priorities:

- Repeat Locations
- Repeat Offenders
- Priority Areas
 - Drug Markets
 - Human Trafficking

Requiring Strong
Partnerships for sustained
success





Who?

- Seattle Community

What?

- Use Evidenced-based Strategies

When?

- Now. This plan is underway

Why?

- Residents and Communities desire and demand improved quality of life

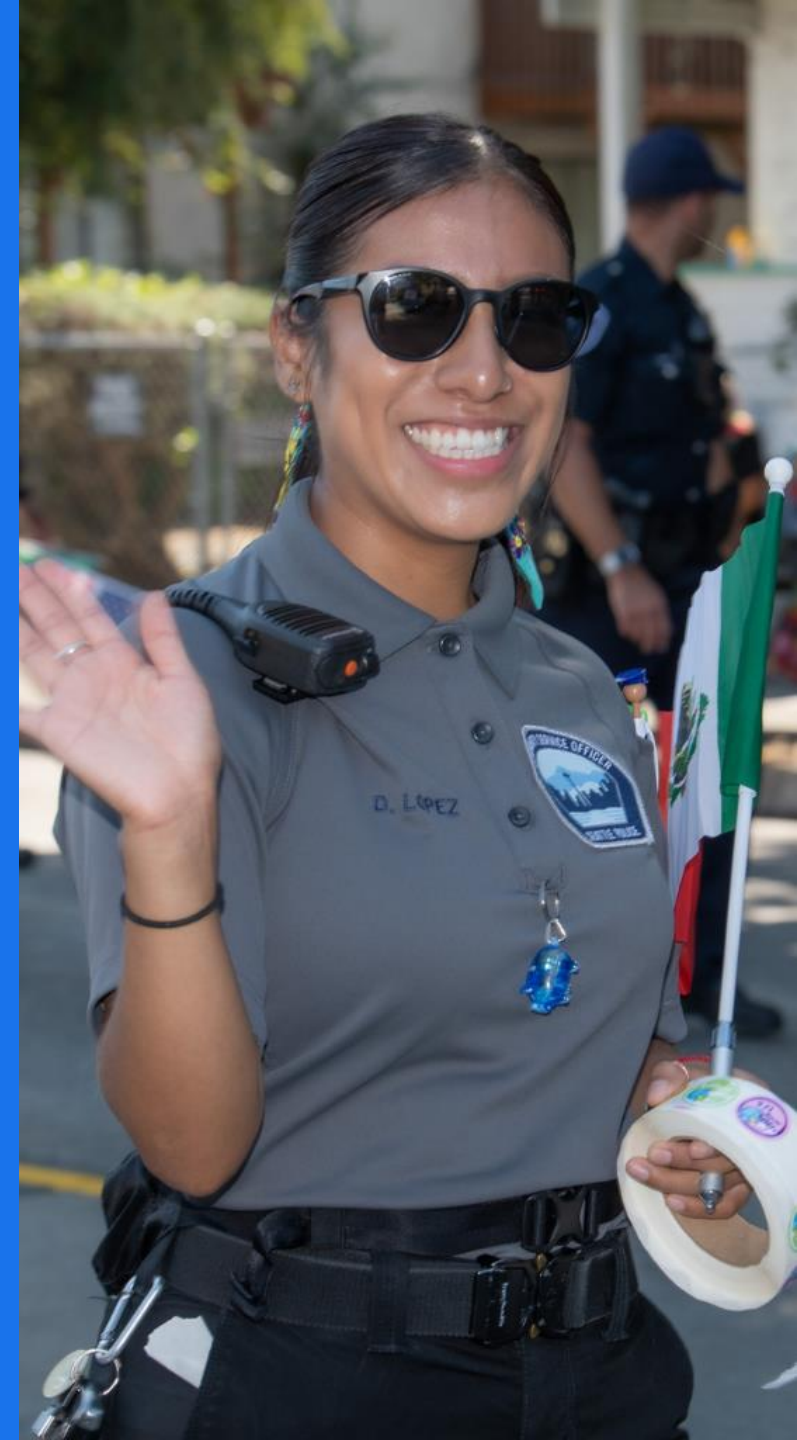




How?

1. Improving communication.

- Communications Director
- Community Concern Portal
- Expand Precinct Community meetings
- Coordinate with Relational Policing and Community Outreach and Demographic Advisory Councils
- Pilot a Police Neighborhood Resource Center





How?

2. Accountability.

- Re-organization of command and reporting structure.
- Units that support crime and harm reduction planning and analysis are combined and centralized
- SeaStat meeting format and content updated
- Create a community version of the SeaStat meeting that is held in communities



How?

3. Use of Evidence-based methods.

- Executive Director of Crime and Community Harm Reduction, an expert in crime and harm reduction strategies and is experienced implementation and evaluation
- Expansion of CPTED in crime reduction planning
- Real-Time Crime Center
- Implement recommendations from consultants and subject matter experts





How?

4. Retention & Recruitment of Officers.

- Health and wellness programs
- Expanded recruiting efforts
- Expand training and leadership development

5. Continuous Improvement



Community/ Business and Government

- Mayor's Priorities
- Legislative Action
- Policing Forward
 - Precinct Advisory Councils/Community Groups
 - Neighborhood Resource Officer Programs



Mayor's Priorities

One Seattle Restoration
Framework

"A well-staffed and well-trained police department is essential to effective public safety in Seattle. Our work to modernize recruiting and increase qualified applications is showing results through record hiring in 2025 – putting us on a path to restore Seattle Police Department staffing." Mayor Harrell



Mayor's One Seattle Restoration Framework



- Reduce Gun Violence
- Prevent High Impact Crime
- Respond to 911 Calls Quickly



- Public Health Approach to the Opioid Crisis



- Activate and Enhance Neighborhoods
- Address the Root Cause of Violence

Mayor's Priorities

“Leveraging these new evidence-based technologies will help our law enforcement officers have the information they need to respond quickly to crimes, helping us create safer environments in neighborhoods...” Mayor Harrell

Community
and
Government



Seattle-Centric supports the One Seattle Restoration Framework

- Partner with City Departments
- Increase Transparency
 - Revamp Public Records Process
- Focus on gun and violent crimes
 - Investigations Bureau

Mayor's Priorities



Seattle-Centric supports the One Seattle Restoration Framework

- Continue to develop relationships with communities
- Alignment with all three Public Safety Departments

The Downtown Activation Team (DAT) exemplifies this plan.

What?

DAT is a multi-disciplinary approach to address criminal and quality of life concerns in highly impacted communities. It is place-based activations, cleanings and safety operations. Community, City, and service partners all working together.

Why?

Public safety is the responsibility of every city department.

SPD has the authority to address criminal behavior, however...

A varied response will assist with long-term solutions which include area activation, thriving retail markets, and sustainable long-term growth.

Where?

DAT #1 is the areas of Pike-Pine ST at the intersection of 3rd AVE.

DAT #2 is the intersections of S. Jackson ST – S. King ST and 12th AVE S.

DAT #3 the intersections of James ST – Cherry ST and 3rd AVE.



The Downtown Activation Team (DAT) exemplifies this plan.

“We understand that communities in Seattle are certainly not homogenous and there are many interests and historical perspectives in our city. Policing forward means a renewed approach to collaborative partnerships with our community.”
Chief Barnes

- Each area receives two restoration actions each day.
- Action times vary depending on the specific needs of individual areas.
- DAT operations are currently staffed through a combination of patrol resources and non-patrol resources.
- The assigned SPD DAT Captain coordinates with other city, and non-governmental entities, to ensure that appropriate services and resources are available to perform this critical work.

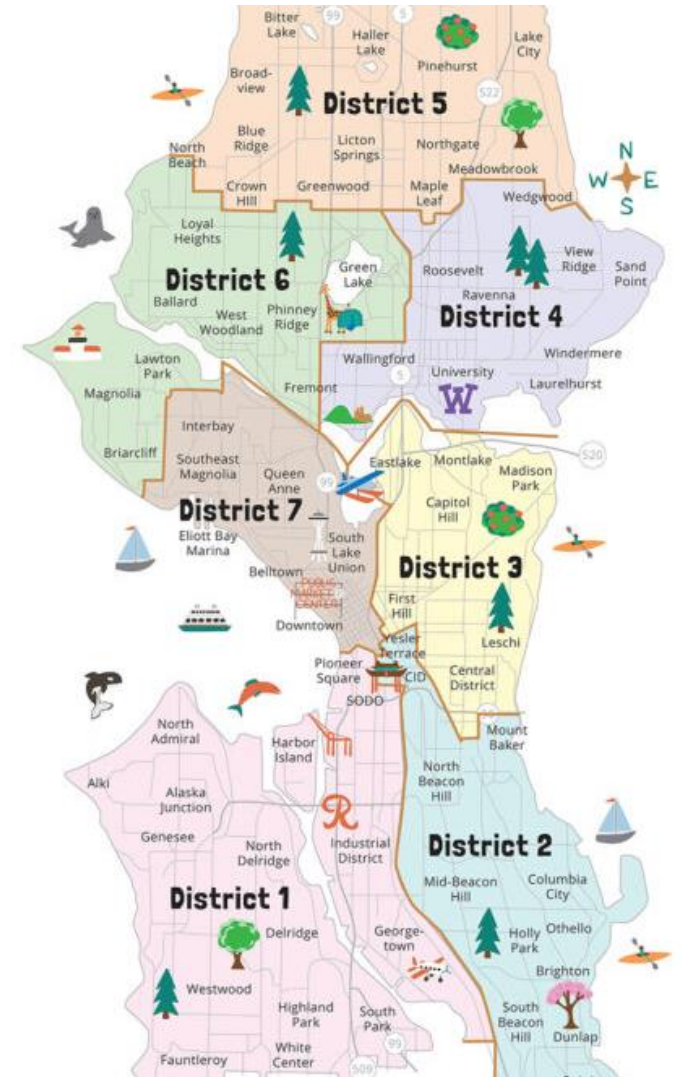


Community
and
Government

Legislative

Select Public Safety Legislation:

- CCTV & Real Time Crime Center
- Safety Regulations for After-Hours Lounges
- Hostage Negotiation Throwphone Technology
- Officer Recruitment Bonuses
- Automated License Plate Reader Technology
- Public Safety Unions Contracts
- SODA & SOAP
- Unlawful Street Racing



Community

**Community
Micro-Policing Plans**



**Community
SEASTAT**



**Precinct and
Community
Advisory Councils**



**Police
Neighborhood
Resource Center**





Community



Communication

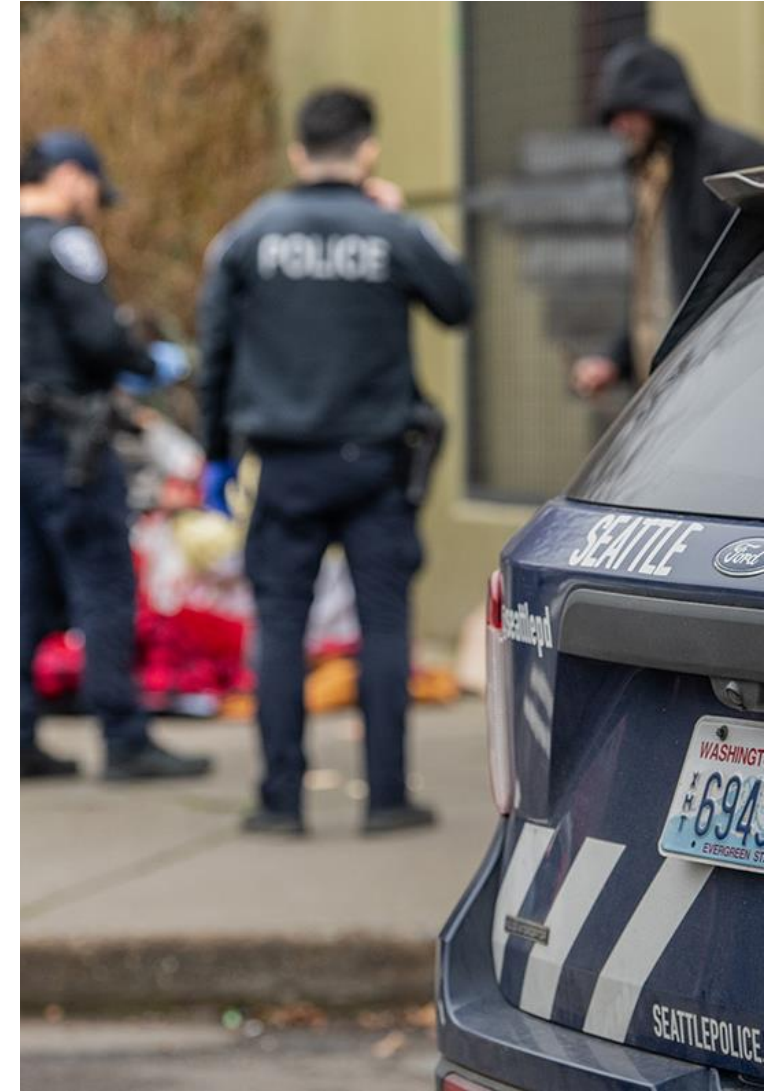
- Individuals
- Families
- Neighborhoods
- Businesses

Media and Social Media outreach to educate and engage with the public

Services and Support

Non-profit associations are significant partners working with unsheltered, mental health, substance abuse, domestic violence, criminal justice diversion and reentry programs.

- Focused on reducing harm
- Work directly with those in need and know what is most needed at any given time
- Needs are generally immediate or may be in response to a crisis
- Grant funded may generate instability.



Services and Support

Community Violence Interrupters.

- Street Community Violence Interrupter
- Community Outreach Worker
- Community Therapist

Business Associations seek to reduce harm and improve quality of life. Recovery from the Pandemic is ongoing and safety concerns have been voiced.

- The downtown and tourist zones are areas of focus.



Services and Support

The Faith Community is actively working in communities throughout Seattle and are working on homelessness, mental health, and substance abuse.

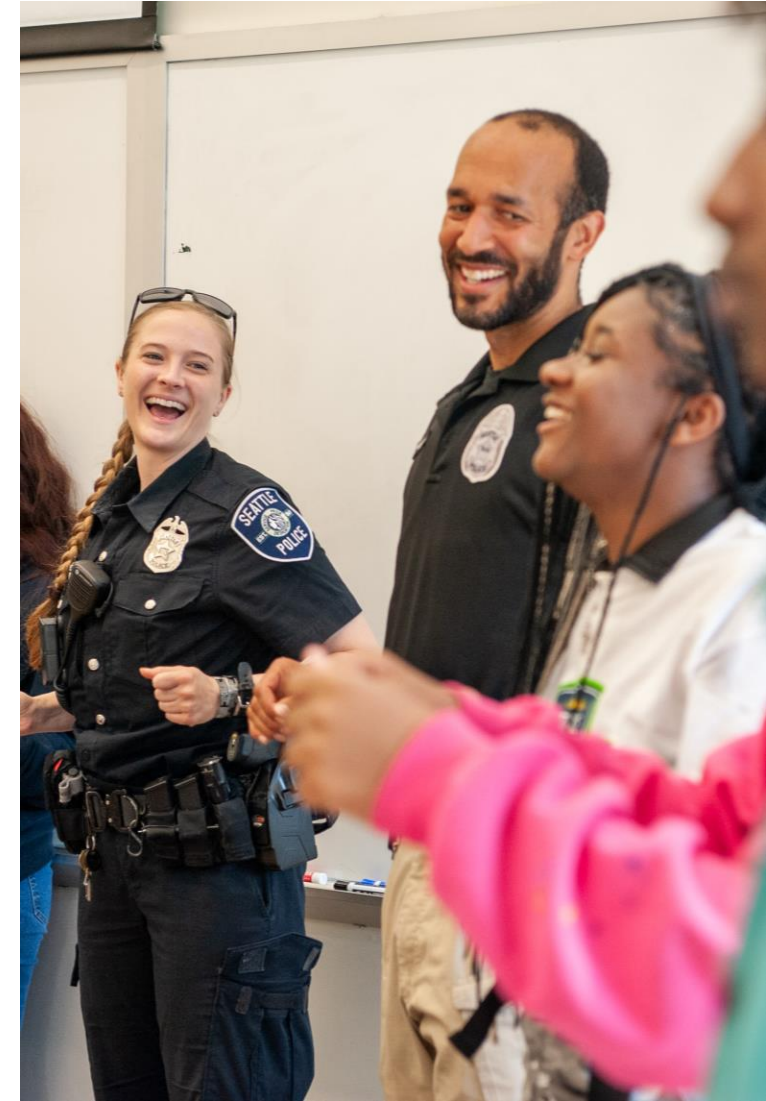
The Faith Community gives voice to many who are in need and work with multiple organizations.



Services and Support

City Services. The resources of all City departments are coordinated to assist where needed. Summer parks programming and kid's programs. Landscape and environment maintenance, etc. improve communities.

Grant and Foundation Support. Coordinated funding is critical to ensure all partners can participate.





Trust Building



These are fundamental and strategic partnerships that create the capacity to help people and simultaneously build trust across organizations. To help communities and reduce harm a network of collaborative organizations needs to be in place. **Long-term, sustained harm reduction requires stable, trusted relationships.**

Summary

Seattle-Centric Policing is more than just a plan—

- It is a citywide commitment to safety, trust, and community well-being.
- This initiative empowers every Seattleite to be part of the solution. in building a safer, more vibrant Seattle.
- We will partner with anyone and any organization to reduce crime and harm, and work to improve quality of life for Seattle residents.

