

# Seattle City Council Transportation Committee – Update from PSRC



Puget Sound Regional Council



# Presentation Overview

- Background on PSRC and Regional Planning in Puget Sound
- What's in the current 2022-2050 Regional Transportation Plan (RTP)?
- What's been happening since RTP adoption in 2022?
- Efforts underway for next RTP (2026-2050)



Puget Sound Regional Council



# Puget Sound Region 1960



Seattle population: **557,087**

Region population: **1,512,979**

WA: **2.866 million** | Iowa: **2.76 million**





# Population Growth 1960–1990

## Seattle

1960 557,087

1990 516,259

## Region

1960 1,512,979

1990 2,748,895

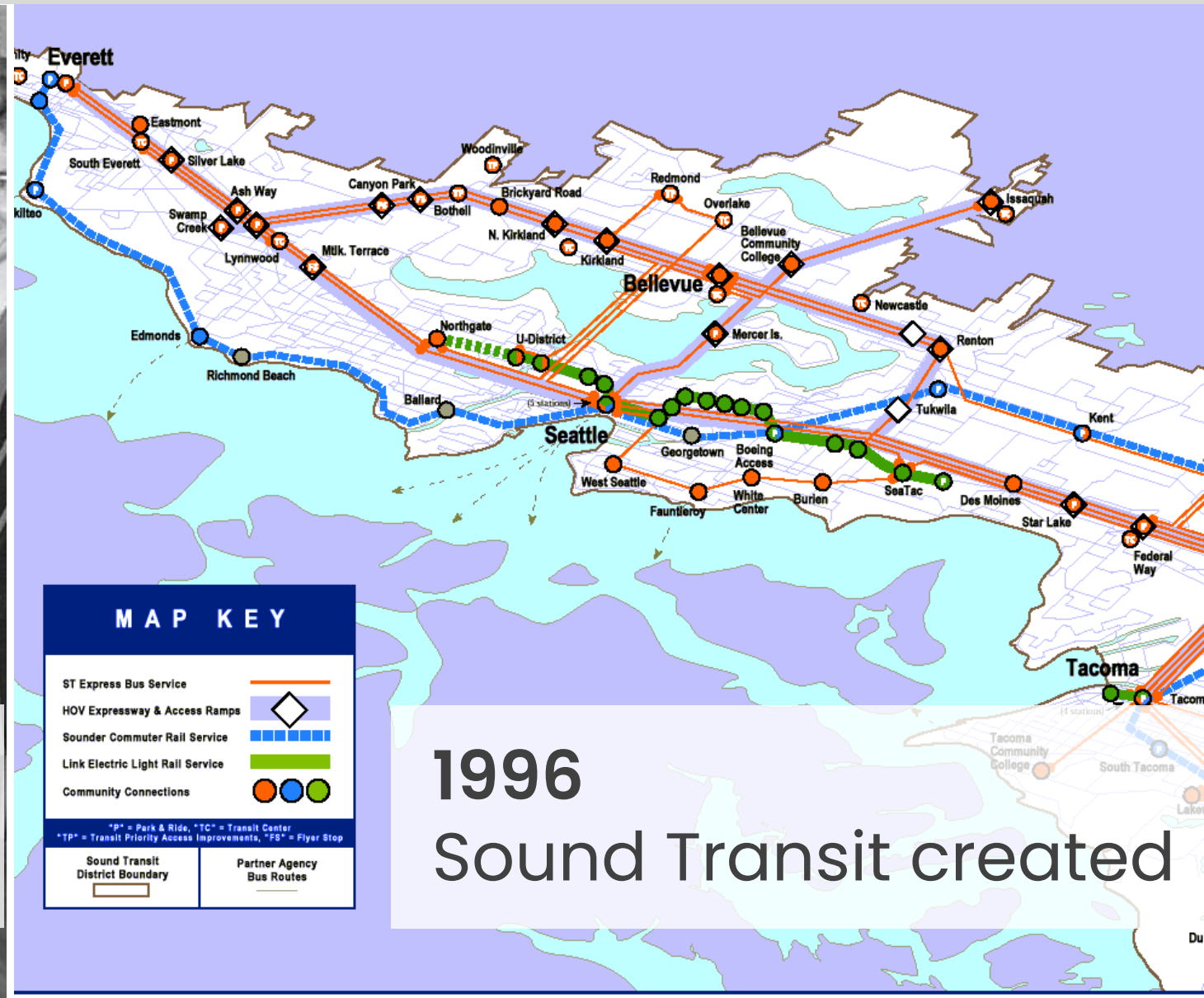




# Response From State of Washington



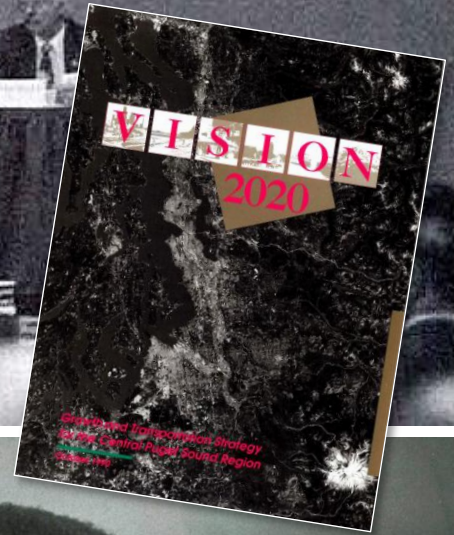
1990  
GMA adopted



1996  
Sound Transit created



# PSRC Formed in 1991





# VISION 2050

- Adopted in October 2020
- Regional plan for 5.8 million people
- Guide for a healthy environment, thriving communities, and strong economy



Environment

Housing

Jobs

Mobility

Equity

Climate





## REGIONAL POLICY DIRECTION

# VISION 2050

—Multicounty Planning Policies—  
—Regional Growth Strategy—

## DETAILED FUNCTIONAL IMPLEMENTATION PLANS

### Regional Transportation Plan

—Metropolitan Transportation Plan—

### Regional Economic Strategy

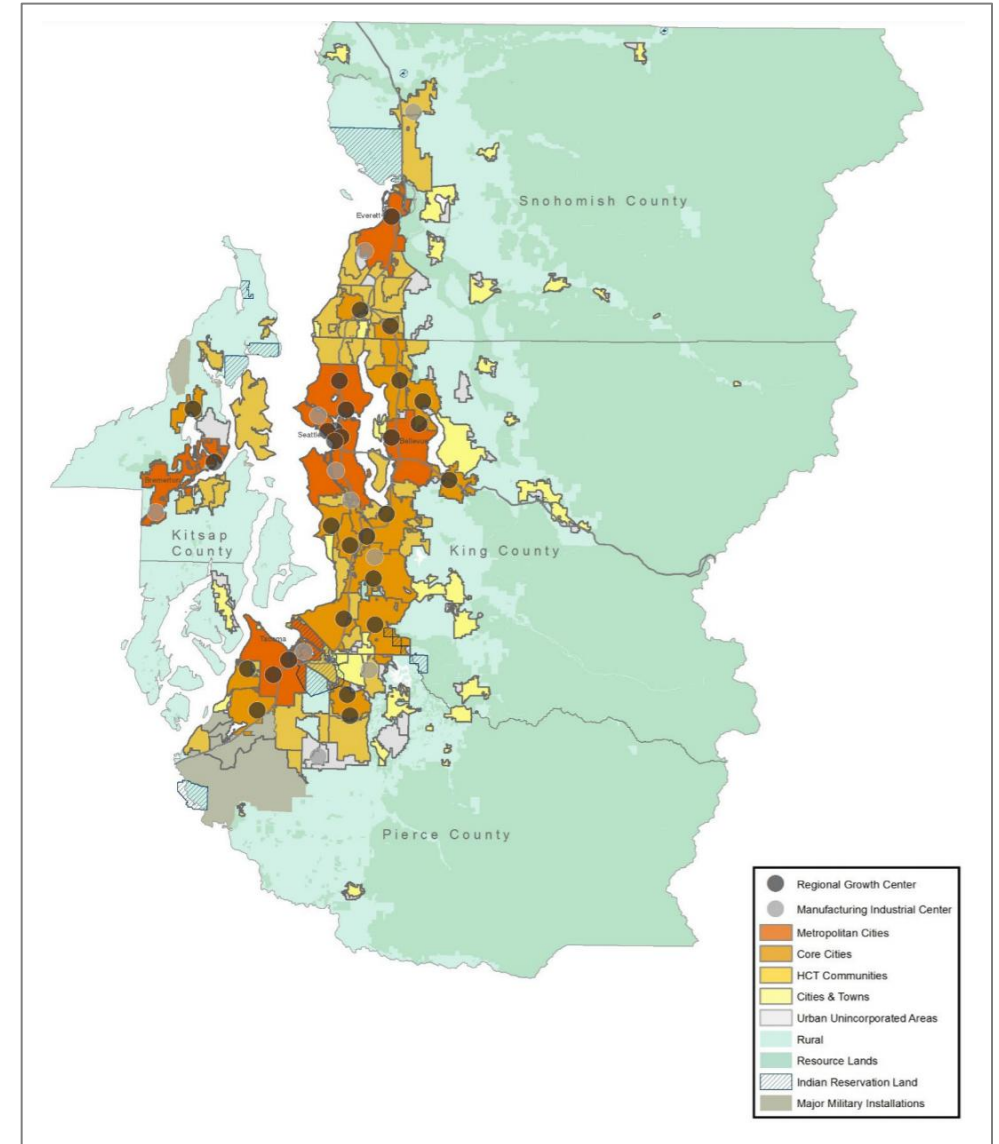
—Comprehensive Economic Development Strategy—





# Regional Growth Strategy

- Types of geographies
- Most growth in Metro, Core, and High-Capacity Transit (HCT) Communities
- **65%** of region's population growth and **75%** of employment growth in regional growth centers & station areas
- Lower growth allocations in urban unincorporated and rural compared with long-term trends
- Better jobs-housing balance by shifting employment allocation from King County







Bellevue



Paine Field



Port of Tacoma



South Lake Union







Community Transit Swift BRT



Sound Transit Sounder



Kitsap Transit Fast Ferry



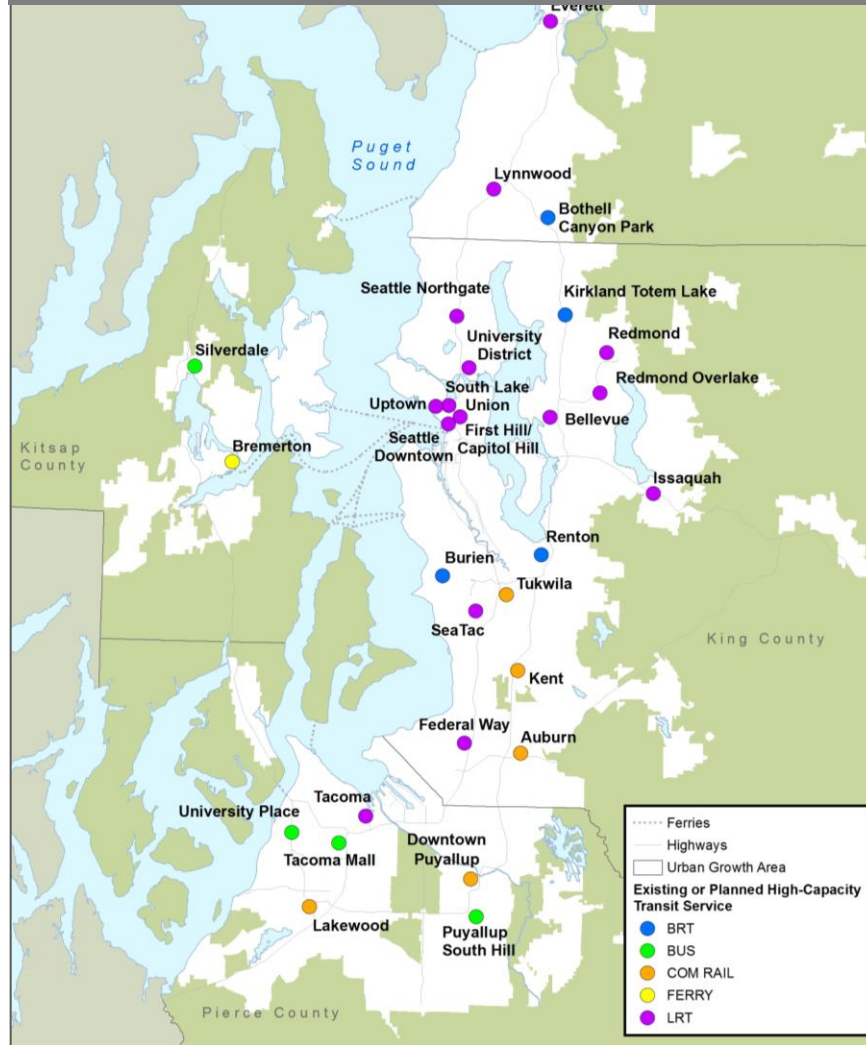
Sound Transit Link



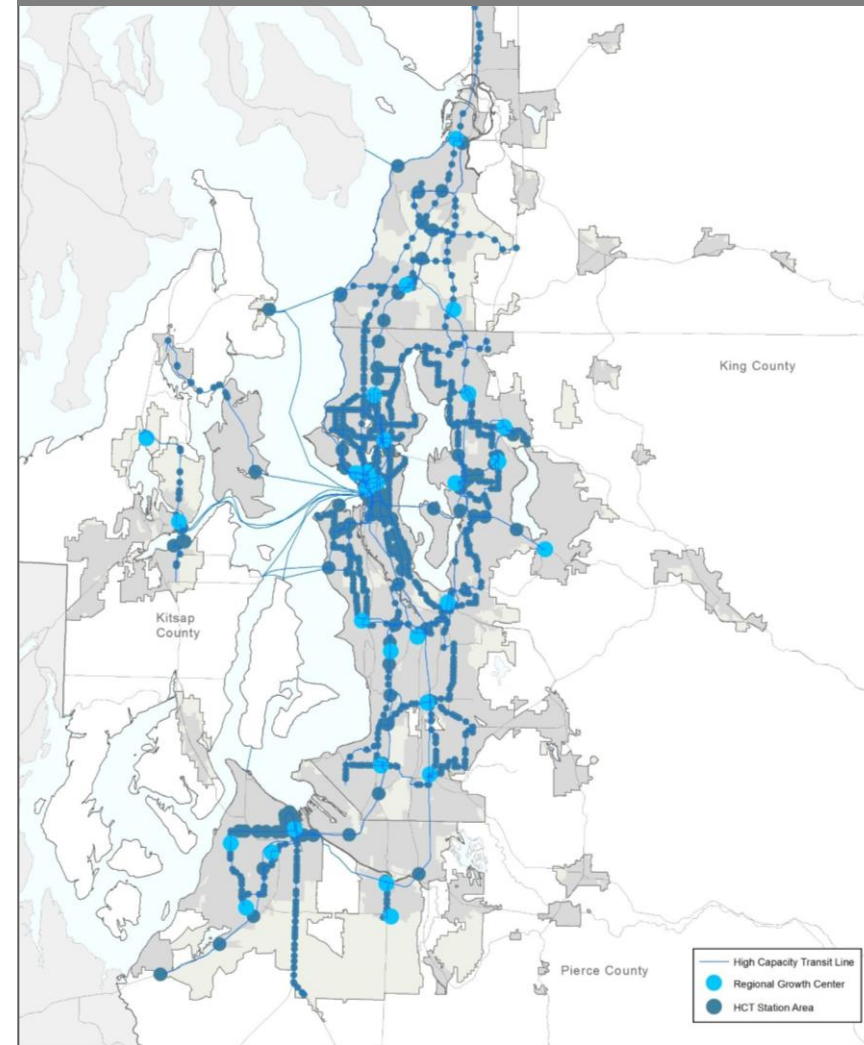


# Centers and Transit Areas

## Regional Growth Centers by Transit Service



## Regional Growth Centers and HCT Station Areas



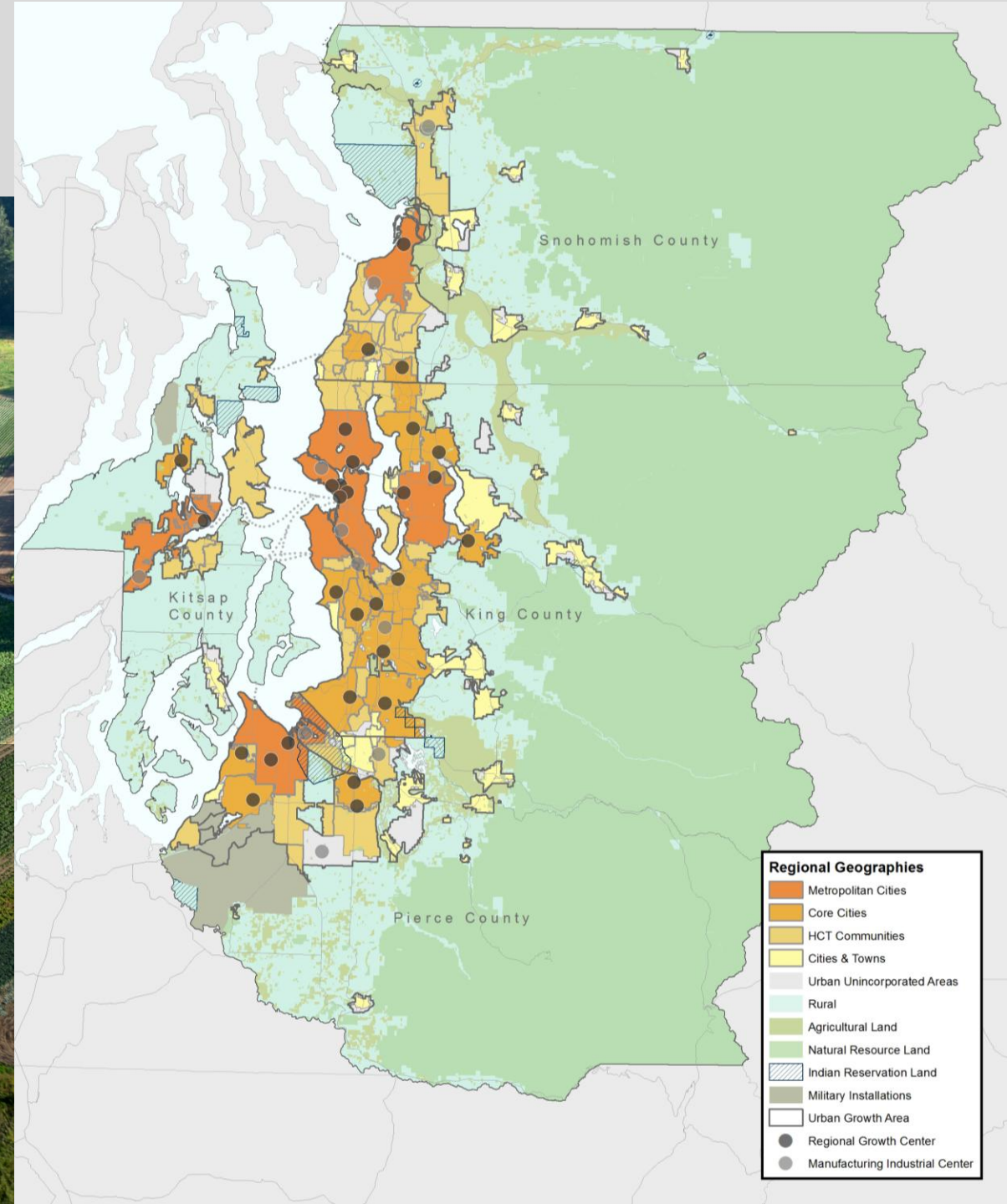


# PSRC's VISION 2050



Regionally, 97% of permitted housing units are in cities and urban areas

Compared to 72% in 1991



## Regional Geographies

- Metropolitan Cities
- Core Cities
- HCT Communities
- Cities & Towns
- Urban Unincorporated Areas
- Rural
- Agricultural Land
- Natural Resource Land
- Indian Reservation Land
- Military Installations
- Urban Growth Area
- Regional Growth Center
- Manufacturing Industrial Center



# Population Growth 1960–Present



Seattle

Region

1960 557,087

1960 1,512,979

1990 516,259

1990 2,748,895

2025 816,600

2025 4,534,300





# Population Growth 1960–Present



## Seattle

1960	557,087
1990	516,259
2025	816,600

---

## Boston

1960	697,197
1990	574,283
2024	673,458

---

## San Francisco

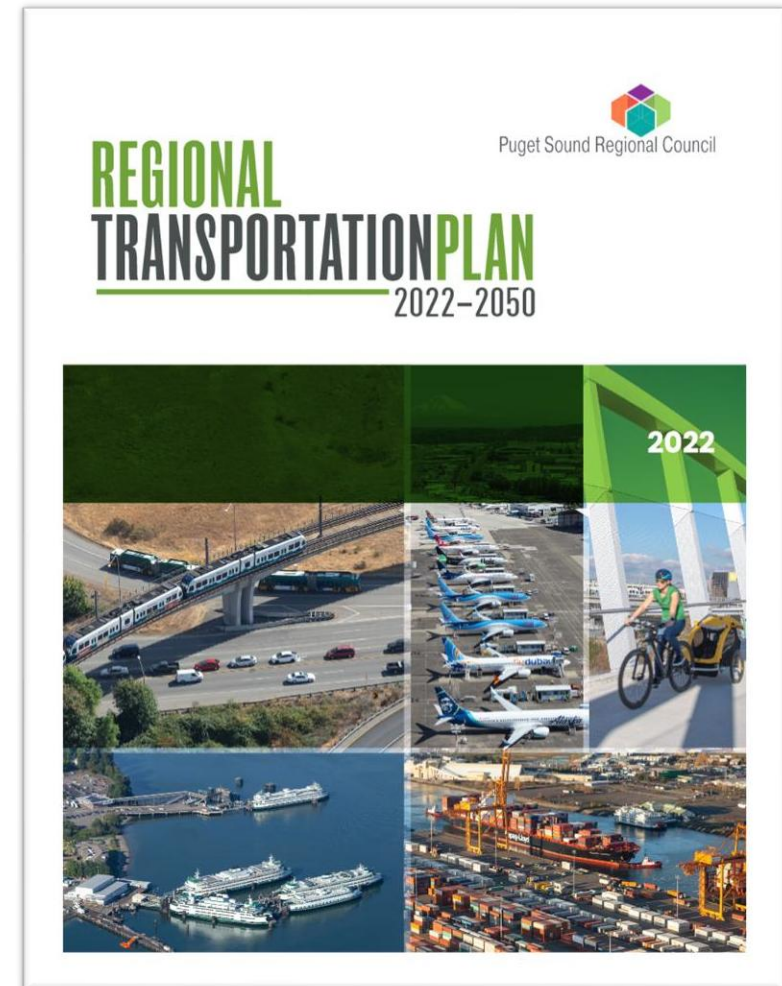
1960	740,316
1990	723,959
2024	827,526





# Regional Transportation Plan: Requirements

- Minimum 20-year planning horizon
- Updated every 4 years
- Integrated multimodal transportation system
- Reasonable financial strategy to fund investments
- Latest available estimates for growth, travel, and economic activity
- Performance measures and targets
- Address federal planning factors





# What's in The Plan?

- **\$300 billion of investment over 28 years**
  - 56% will maintain, preserve and operate the system
  - 70% of the plan's system improvements are for investments in local and regional transit
  - 84% of the plan funded with forecast current law revenues



**36**

Bus Rapid Transit  
routes



**10**

Passenger-only Ferry  
routes



**116**

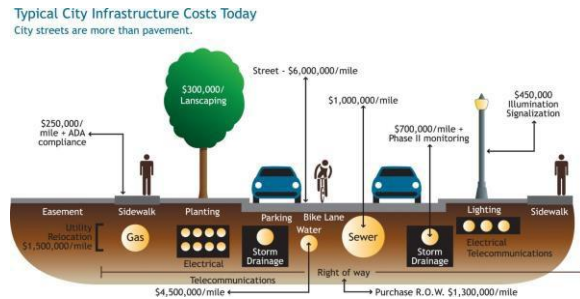
Miles of light rail and  
80+ stations





# Programs Included in The Plan

2022-2050  
**REGIONAL TRANSPORTATION PLAN**



Counties



Cities



Local Transit



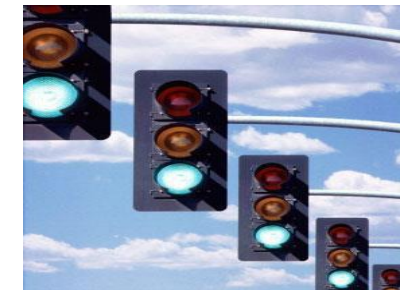
Sound Transit



State Ferries



State Highways



Other Regional





## What has been happening since 2022 Plan Adoption?

- Safety
- Equity
- Climate
- Transit access
- Transportation system inventories





# Safety: Work to Date

- **PSRC held first Regional Safety Summit June 2023**
  - Purpose was to convene stakeholders to advance the conversation on how to achieve zero roadway fatalities and serious injuries
  - Feedback from Summit informed development of the Regional Safety Action Plan
- **PSRC adopted Regional Safety Action Plan in May 2025 at the General Assembly. Effort funded by Safe Streets and Roads for All (SS4A) grant program**
  - Up to 25 jurisdictions will also develop local safety action plans under SS4A, in coordination with the regional program or through individual grants





- **FHWA Equity Pilot**
  - Goal was to develop innovative ways to improve equity in PSRC's project selection process
  - Equity Advisory Committee recommendations incorporated into project selection process
- **FTA Equity Formula Allocation**
  - New focused and intentional methodology to distribute regional FTA funds to improve transit services for equity focus area (EFA) populations





## **Building from VISION 2050 and the RTP:**

- 2030 climate analysis and sensitivity testing
- Convened a climate expert review panel

## **Partnership efforts with Puget Sound Clean Air Agency, other partners:**

- Updated regional GHG emissions inventory
- Climate Pollution Reduction Grant Program (CPRG) regional climate planning
- Regional EV Clearinghouse





# Transit Access: Work to Date

## Work Program:

- Review existing transit access tools/resources in conjunction with updated data to identify improvements and next steps
- Identify potential improvements to active transportation (walk/bike/roll) connectivity near transit stations
- Review and assess Mobility On Demand (MOD) in providing transit access
- Update PSRC's existing transit access resources
- Develop regional transit access needs assessment and potential recommendations to address those needs.





# Preparation and Next Steps: RTP (2026–2050)

**2024**

Engagement and  
Identification of Plan Priorities

**2025**

Analysis and Draft  
Plan Development

**2026**

Plan Adoption

Ongoing Public Outreach Informs the Plan





# RTP Scope of Work

Board feedback on policy priorities for the next plan have confirmed the commitment to:





# RTP Available Revenues vs. Proposed Expenditures

Gap between available revenues and proposed expenditures = 21%

Sponsor Type	NEEDS				REVENUES			Revenue Gap	% of Revenue Gap
	Maintenance, Preservation and Operations	System Improvements		Total	Current Law	New Revenue	Total		
		Regional Capacity Projects	Other Improvements						
Counties	\$17,900	\$5,200	\$2,800	\$25,900	\$16,600	\$0	\$16,600	\$9,300	12%
Cities	\$45,300	\$8,500	\$23,200	\$77,000	\$41,700	\$0	\$41,700	\$35,300	45%
Local Transit	\$52,700	\$2,800	\$19,200	\$74,800	\$52,400	\$0	\$52,400	\$22,500	29%
Sound Transit	\$49,500	\$41,600	\$34,500	\$125,700	\$125,700	\$0	\$125,700	\$0	0%
WSF	\$11,300	\$0	\$6,100	\$17,300	\$11,400	\$0	\$11,400	\$6,000	8%
WSDOT	\$23,400	\$14,500	\$6,700	\$44,600	\$39,400	\$0	\$39,400	\$5,200	7%
Subtotal		\$72,700	\$92,500						
TOTAL	\$200,100	\$165,200		\$365,300	\$287,100	\$0	\$287,100	\$78,200	21%

All costs in 2026\$





An aerial photograph of Seattle, Washington, showing the city skyline with numerous skyscrapers, the Space Needle, and the waterfront. The image is split vertically down the middle. The left side shows a more urban, lower-rise area with parking lots and industrial buildings. The right side shows the dense downtown skyline. The text is overlaid on the left side.

# Thank You!

**Josh Brown**

Executive Director

[jbrown@psrc.org](mailto:jbrown@psrc.org)



Puget Sound Regional Council