

Department of Education and Early Learning

Department Overview

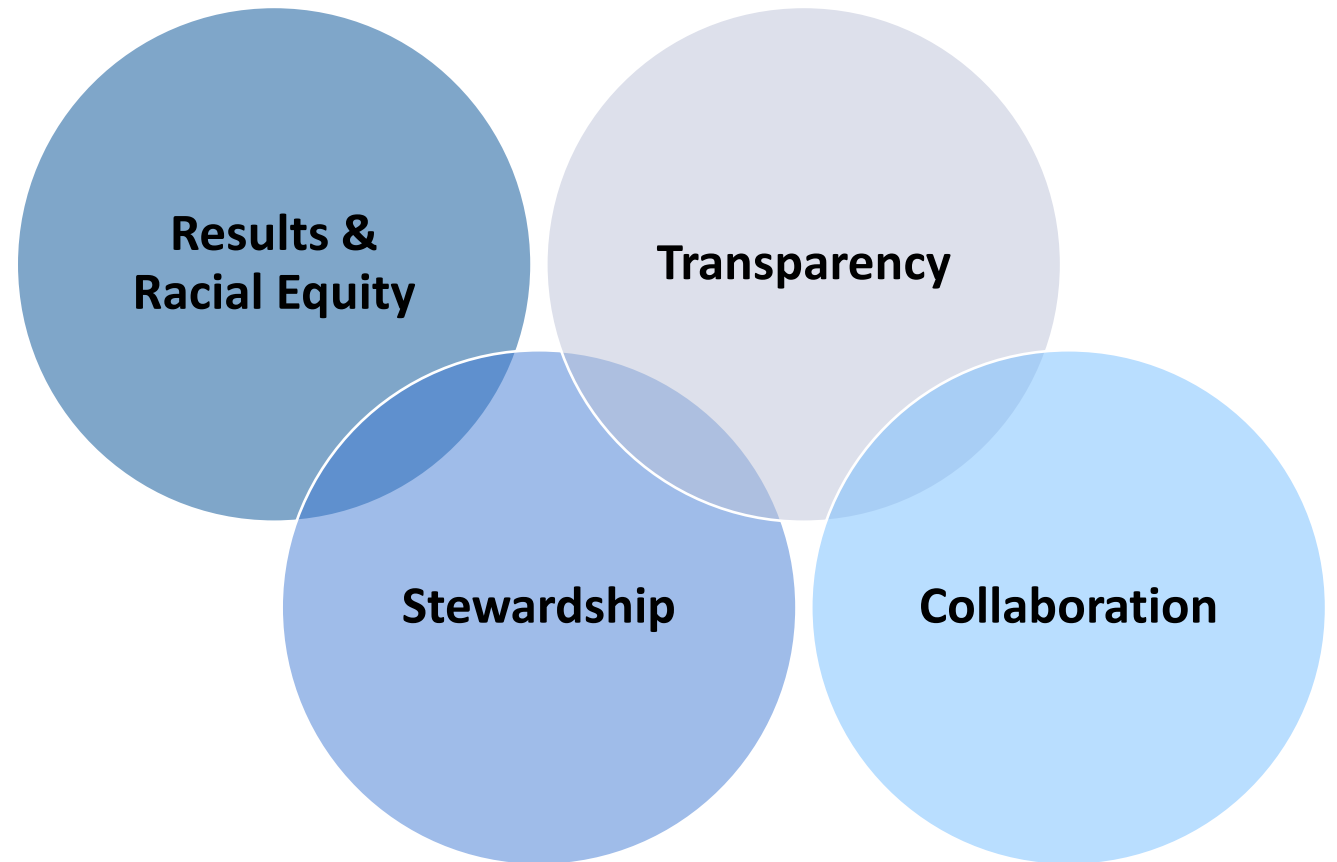
March 28, 2024



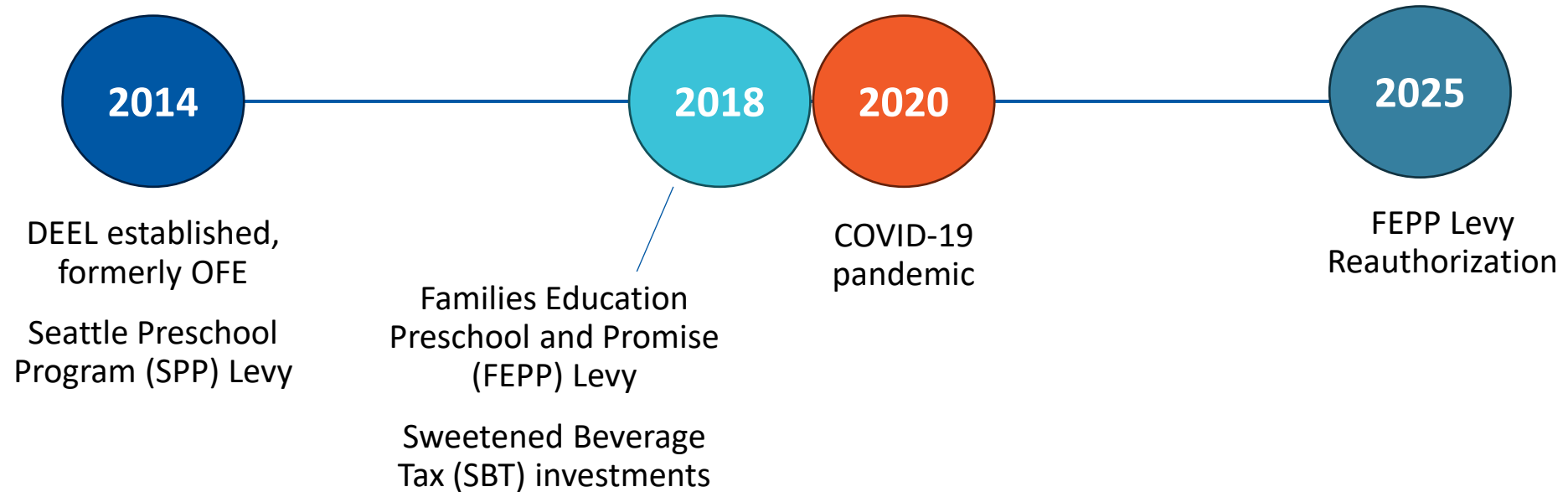
Mission and Values

The mission of the Department of Education and Early Learning is to transform the lives of Seattle's children, youth, and families through strategic investments in education.

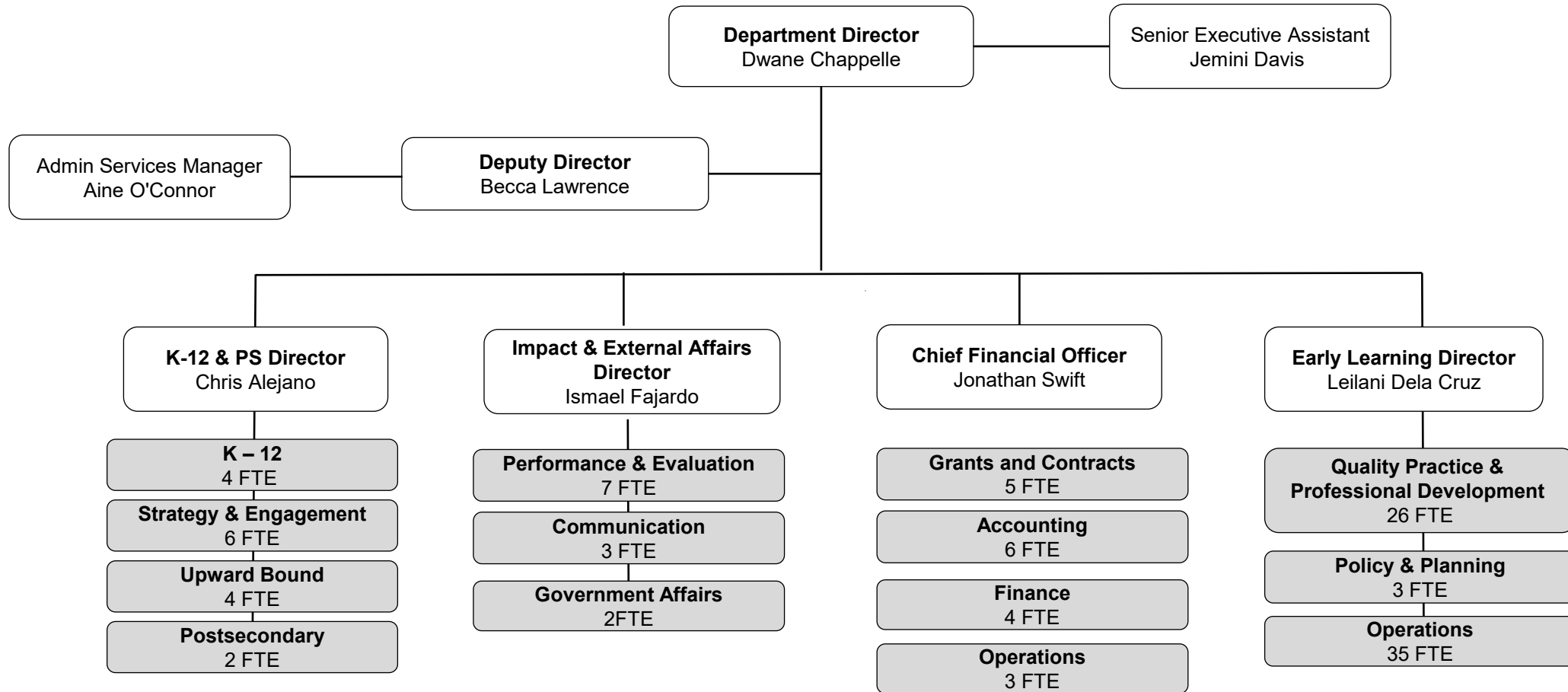
We envision a city where all children, youth, and families have **equitable opportunities and access to high quality education services, support, and outcomes.**



DEEL History

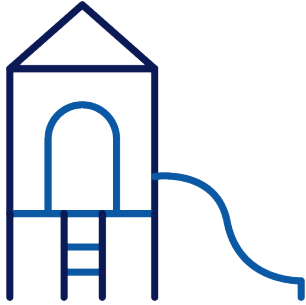


DEEL Organizational Chart



**3 deputy division directors not listed in FTE totals*

Goals



All Seattle families have access to affordable, quality childcare.



All Seattle children are kindergarten ready.



All Seattle students graduate high school college and career ready.



All Seattle students attain a postsecondary degree, credential, or certificate.

Core Strategies



Equitable Educational Opportunities



Student and Family Supports

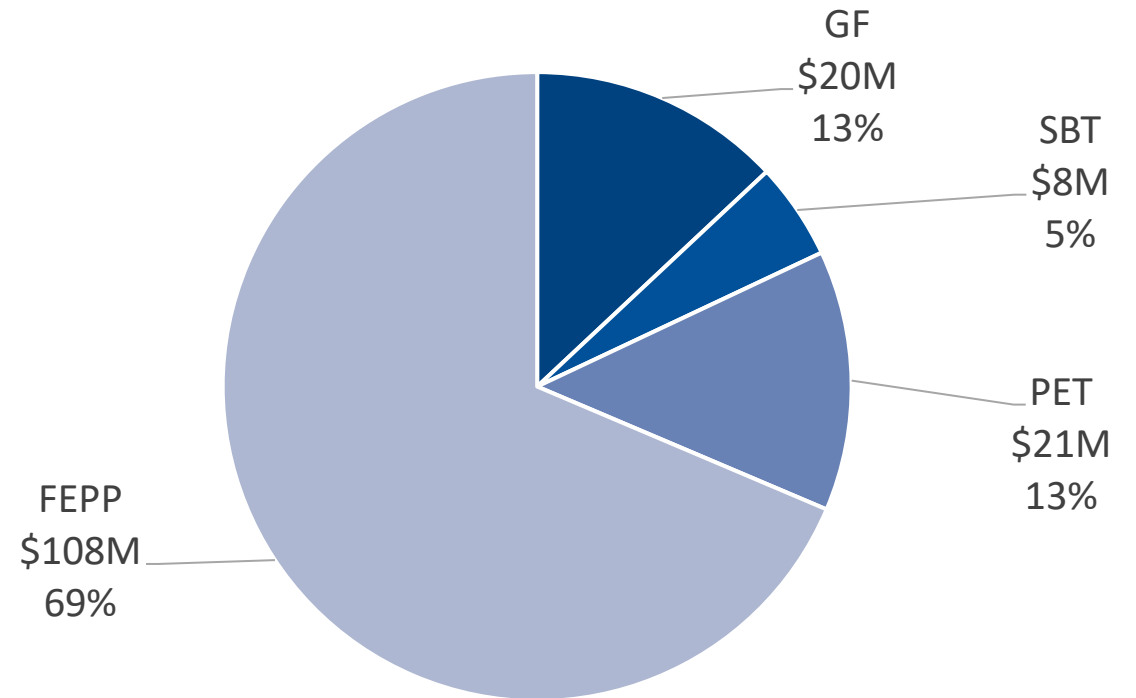


High Quality Learning Environments

Budget

- 2024 Adopted Budget = \$157M
- FEPP Levy funds 69% of total
- GF includes grants (\$6M)
 - Early Childhood Education and Assistance Program (ECEAP)
 - Upward Bound
 - Washington Student Achievement Council (WSAC)
- PET includes \$20M Council Add for K-12 Mental Health
- Staffing: 121.50 FTEs

2024 Adopted Budget by Fund Source



FEPP Levy Oversight Committee



Caption: FEPP Levy Oversight Committee members gather at the WNDR Museum for their 2023 end-of-year celebration

Appointed Members

1. Natalie Beauregard
2. Dr. Donald Felder
3. Dr. Stephanie Gardner
4. Marques Gittens
5. Kateri Joe
6. Susan Yi Lu Lee
7. Jennifer Matter
8. Erin Okuno
9. Manuela Slye
10. Evan Smith
11. Linda Thompson-Black

Required Members

1. Mayor Bruce Harrell
2. Councilmember Maritza Rivera
3. Dr. Rosie Rimano-Chareunsap, Seattle Colleges Chancellor
4. Dr. Brent Jones, Seattle Public Schools Superintendent
5. Gina Topp, Seattle Public Schools Board Director

Early Learning Investments*

- Child Care Assistance Program (CCAP) Subsidies
 - *Budget: \$4.3M (GF/SBT)*
- Seattle Preschool Program (SPP)
 - *Budget: \$52.0M (FEPP)*
- Prenatal-to-3 Community Grants
 - *Budget: \$1.5M (SBT)*
- Home Visiting
 - *Budget: \$4.2M (GF/SBT)*



Caption: Young scholars graduate from Creative Kids Preschool

**Not an exhaustive list*

Child Care Assistance Program Spotlight

Helps eligible Seattle families with children ages 1mo – 12 years old afford childcare through subsidies accepted by participating providers

- **History:** Created in 1970s as part of Model Cities federal funding initiative to eradicate poverty and expanded overtime with City General Fund support
- **Partners:** Over 250 participating licensed child care providers citywide
- **Eligibility:** Families 60.1-94% SMI
- **Quality:** CCAP providers serving children under age 5 required to participate in [Early Achievers](#)

CCAP By the Numbers - 2023	
Registered Providers	250
Sites Where Vouchers Used	191
Total Children Served (CY)	715

Seattle Preschool Program Spotlight

Award-winning preschool program serving 3- and 4-year-olds citywide with free or affordable high-quality learning environments to promote kindergarten readiness

- **History:** Launched in 2015-2016 SY with funding from 2014 SPP Levy
- **Partners:** Community-based organizations, Seattle Public Schools, and Family Child Care (FCC) programs
- **Quality:** SPP exceeds national averages for teachers meeting standards ([US DHHS](#), 2020)

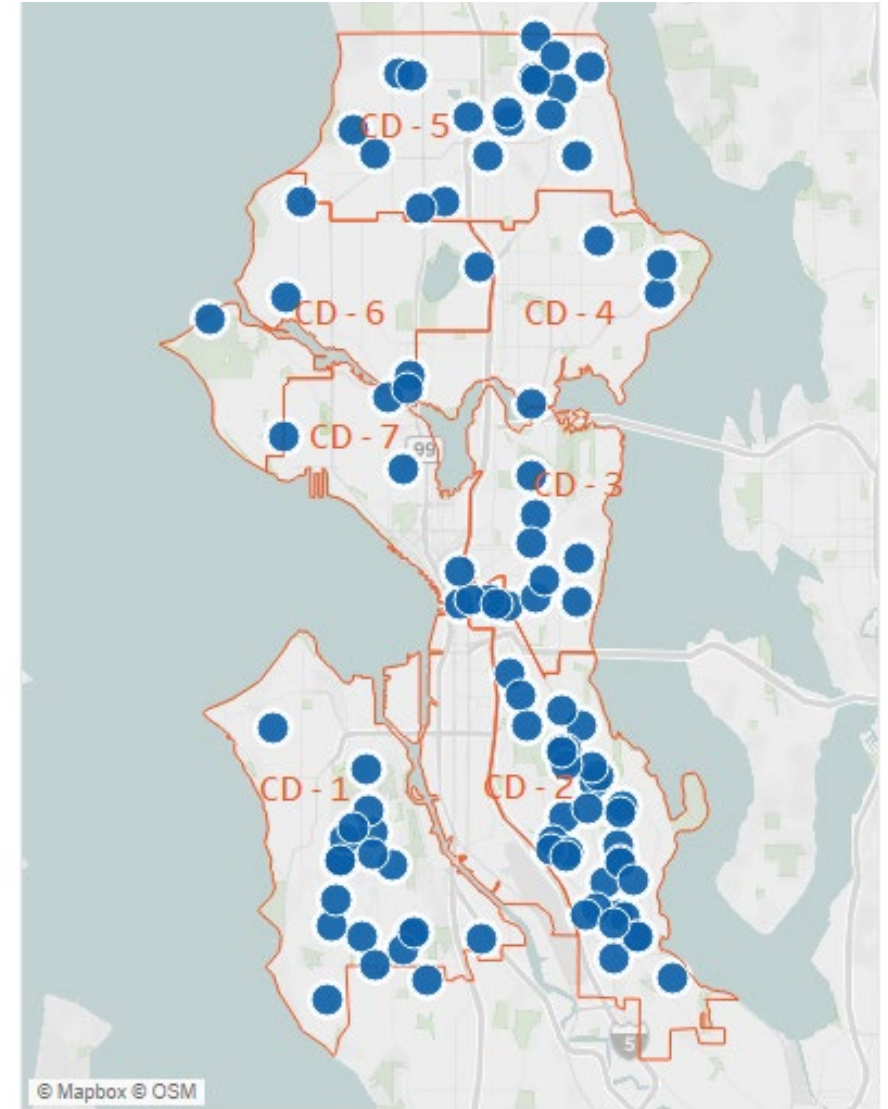
SPP By the Numbers – 7-Year Growth		
	SY 2015-2016	SY 2021-2022
Providers	5	26
Sites	13	87
Classrooms	15	130
Seats	280	2,040
Children Served	283	1,959

SPP Applications Now Open Now for 24-25 SY

- 27 partner organizations
- 97 sites citywide
- 151 classrooms
- Capacity to serve 2,470 children



SPP Locations – SY 2024-2025



K-12 Investments*

- School Based Investments
 - *Budget: \$16.3M (FEPP Levy)*
- Opportunities and Access
 - *Budget: \$2.3M (FEPP Levy)*
- School Based Health Centers
 - *Budget: \$9.3M (FEPP Levy)*
- Academy of Rising Educators
 - *Budget: \$782K (FEPP Levy)*



Caption: Students at Interagency Academy attend graduation

**Not an exhaustive list*

Opportunities and Access Spotlight

Increases youth access to expanded learning and college and career readiness programs through partnerships with community-based organizations

- **History:** While DEEL has a long history of investment in CBOs and youth programming, the O&A strategy began in SY 2020-21 with funding from the 2018 FEPP Levy
- **Partners:** Community-based organizations
- **Access:** Cycle 1 partners (14 CBOs) served more than 1,050 K-12 students annually; Cycle 2 is projected to serve 2,400+ youth per year

Opportunities & Access Cycle 2 Partners

- | | |
|--|--|
| 1. ACE Academy | 9. Friends of the Children |
| 2. Adult & Youth Learning Center | 10. Geeking Out Kids of Color |
| 3. Celebrating Roots | 11. The Good Foot Arts Collective |
| 4. East African Community Services (EACS) | 12. Kandelia |
| 5. Empowering Youth & Families Outreach (EYFO) | 13. Movimento Afrolatino Seattle (MAS) |
| 6. Eritrean Association in Greater Seattle | 14. School Connect WA |
| 7. FEEST Seattle | 15. South End Stories |
| 8. Financial Leadership Academy | 16. STEM Path Innovation Network |

Postsecondary Investments*

- Upward Bound
 - *Budget: \$684K (US Department of Education and General Fund)*
- Seattle Promise
 - *Budget: \$10.2M (FEPP Levy)*
- Regional Challenge Grant
 - *Budget: \$1.25M (Washington Student Achievement Council)*



Caption: Seattle Promise scholars collaborate during class

**Not an exhaustive list*

Seattle Promise Spotlight

College tuition and success program that guides students from high school to college and promotes completion of certificate, credential, degree, or transfer to four-year institution

- **History:** Builds from the success of the 13th Year Scholarship established at South Seattle College in 2008, and expanded to all campuses in 2017 with support from 2018 FEPP Levy
- **Partners:** Seattle Colleges and Seattle Public Schools
- **Impact:** Seattle Promise 3-year completion rates are roughly 16% higher than for non-Promise first-time students at Seattle Colleges

Seattle Promise By the Numbers – 5-Year Growth		
	# HS Applications	# College Enrolled
2018	589	191
2019	720	290
2020	1,739	689
2021	2,099	708
2022	2,248	830

2024 Priorities

Prenatal to Post-
secondary
alignment

Seattle
Preschool
Program growth

FEPP Levy
renewal

Equity and anti-
racism

Organizational
excellence

Youth mental
health



Youth Mental Health Overview

Student Mental Health Supports Network (\$4.5M)

- Pilot launched in 22-23 SY with 5 schools (Aki Kurose, Denny, Rainier Beach, Chief Sealth, and Ingraham; \$1M)
- Expanded to 7 schools in 23-24 SY (Garfield, Cleveland)
- \$250K annual grant per school through 24-25 SY; \$3.5M
- Supports culturally specific and responsive clinical care, screening and referrals, and social-emotional learning in partnership with CBOs

Council 2024 CBA DEEL-001-A (\$20M)

- City's Office of Innovation & Performance currently engaging stakeholders
- Mayor's Office will evaluate existing City investments with feedback from stakeholders
- Investment strategy expected Spring 2024

2024 Competitive Funding Processes



Up to \$3.00M

Release Date: Feb 2024

Eligibility: CBOs and City agencies



Up to \$1.49M

Release Date: Mar 2024

Eligibility: CBOs



Up to \$3.00M

Release Date: May 2024

Eligibility: Current SPP and SPP Pathway providers



Up to \$1.15M

Release Date: Sep 2024

Eligibility: New and existing SPP/Pathways providers

Looking Ahead

- FEPP Levy School Year 202-2023 (FEPP Year 4) Annual Report
- Councilmember site visits



Caption: Mayor Bruce Harrell, Councilmember Maritza Rivera, and DEEL Director Dwane Chappelle visit Causey's Learning Center in the Central District



Thank You and Questions