

SEATTLE TRANSPORTATION PLAN

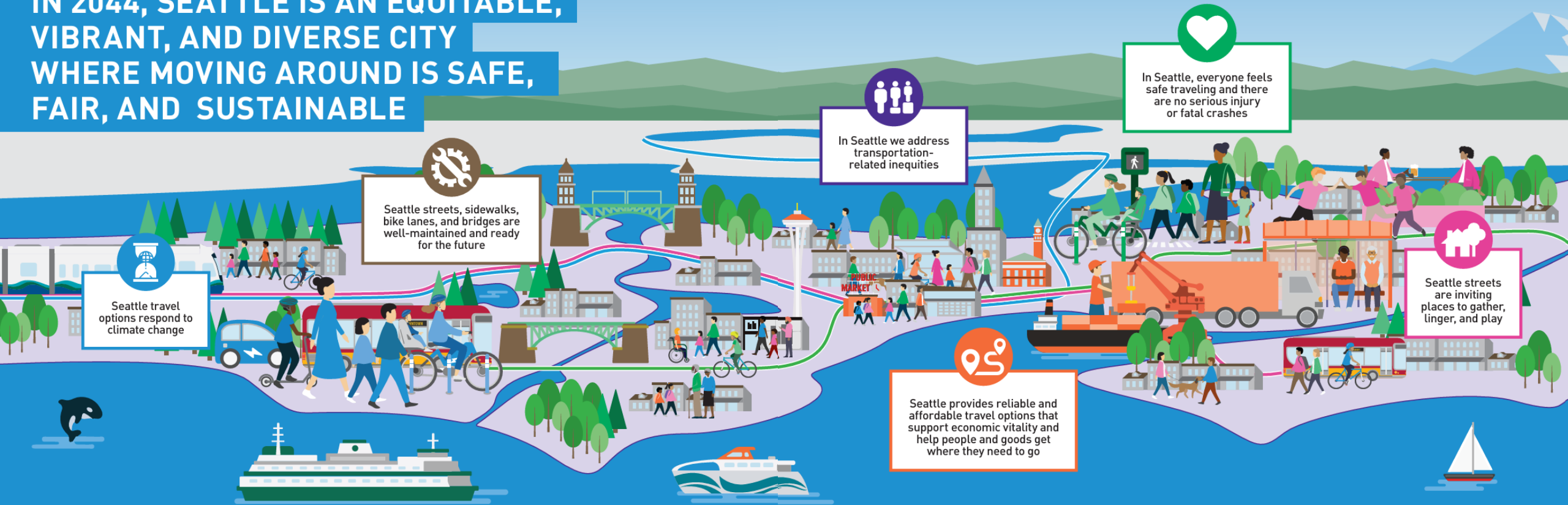
3-YEAR IMPLEMENTATION

TRANSPORTATION COMMITTEE
SEPTEMBER 16, 2025



Seattle Transportation Plan

IN 2044, SEATTLE IS AN EQUITABLE,
VIBRANT, AND DIVERSE CITY
WHERE MOVING AROUND IS SAFE,
FAIR, AND SUSTAINABLE



Purpose

Present the STP implementation report by September 2025 in compliance with Resolution #32131, which directed SDOT to:

- Identify near-term priorities (3-5 years)
- Be informed by adopted 6-year Capital Improvement Plan (CIP)
- Include information on programs like new sidewalks, transit passenger safety, and bridge maintenance
- Engage Bicycle, Pedestrian, Freight, and Transit Advisory Boards
- Update at least every 4 years to adjust to available resources and community input
- Continue to engage community and partners on STP planned progress



Seattle
Department of
Transportation

Long-Term Vision

- Set citywide goals and values
- Defines modal priorities, key moves, and system-wide strategies

Levy Commitments & CIP

- Voter-approved funding obligations
- Specifies projects, timelines, funding sources

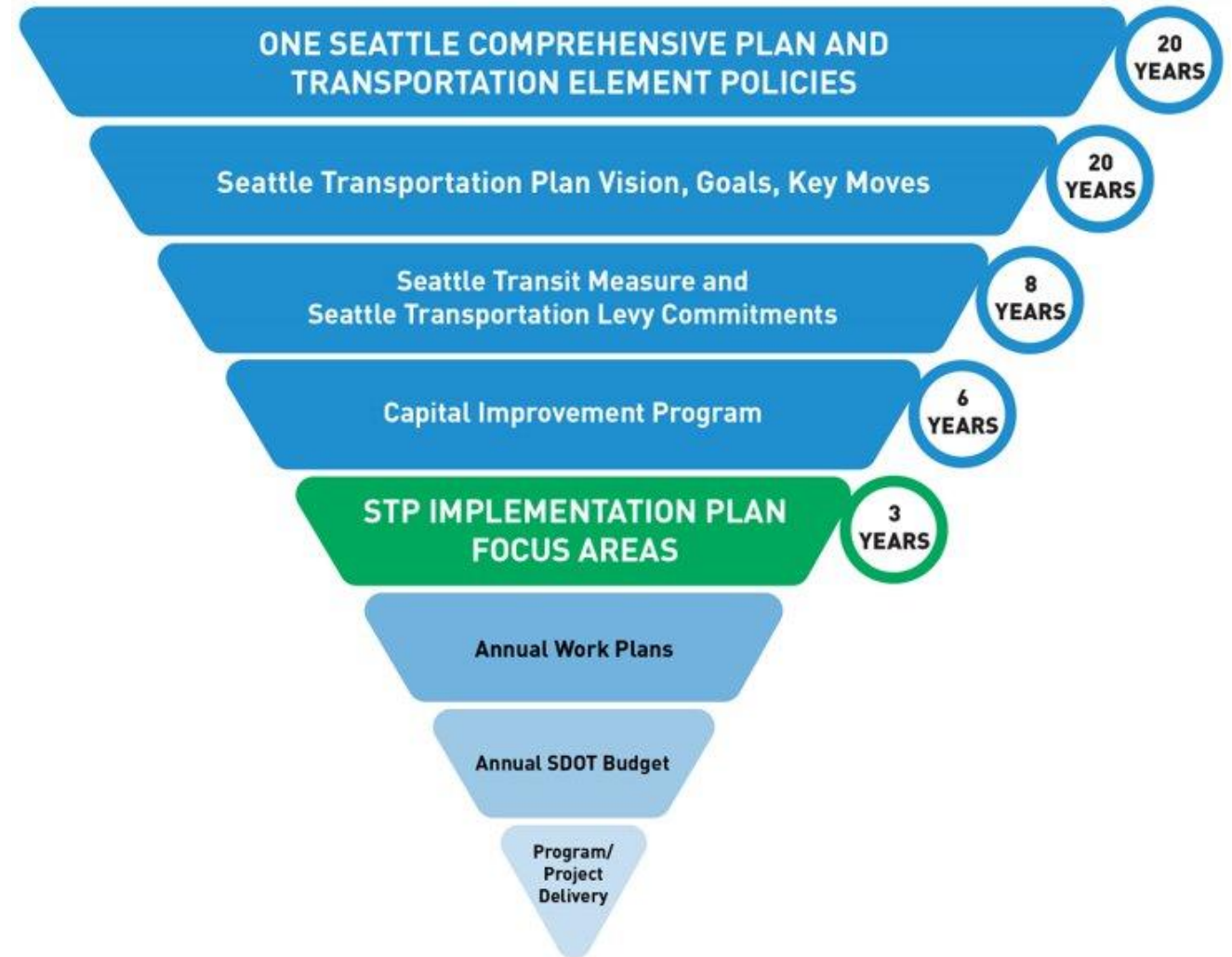
Implementation Focus Areas

- Bridges vision to near-term investments
- **Conveys programmatic emphasis, not capital delivery (no project lists)**

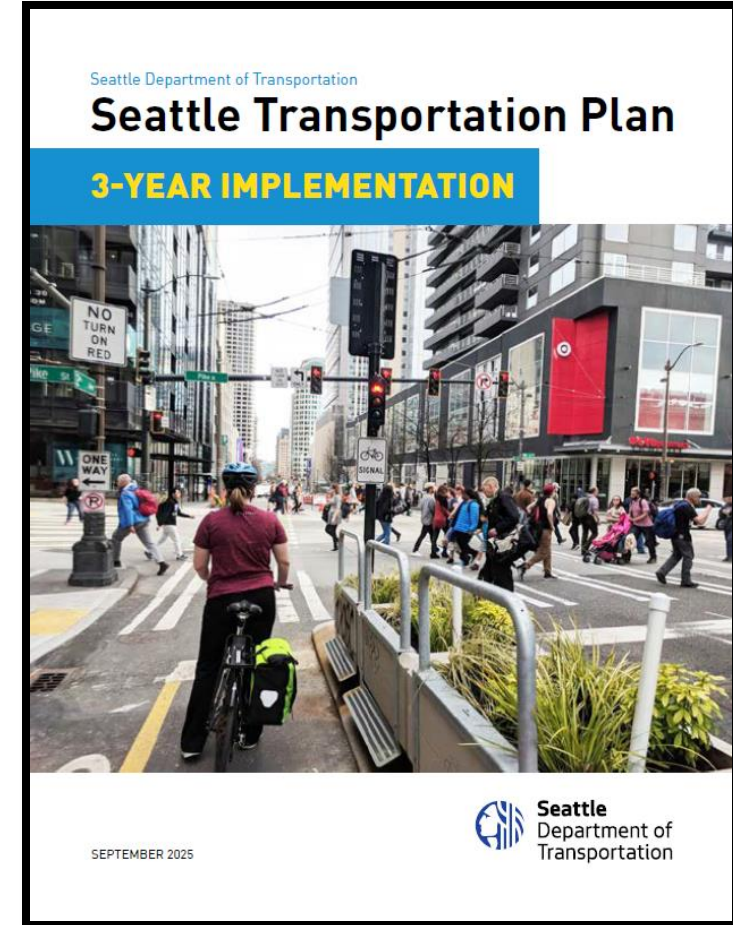
Work Plans, Budget, Project Delivery

- Reflects upstream policy, funding, and implementation priorities
 - E.G. Annual Levy Delivery Plan

From Plan to Implementation



From Plan to Implementation



Seattle Transportation Plan

By the Numbers: What's in the Seattle Transportation Plan (STP)?



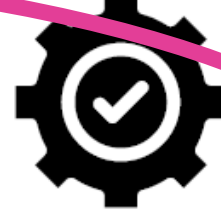
6

Guiding Goals



26

Key Moves



173

Implementing Actions



8

Functional Elements



4

Priority Investment
Networks



81

Large Capital Projects



3

Tiers of Performance
Metrics

STP Goals & Key Moves 🔑

SAFETY

Lead with Safety (S)

Goal: Prioritize safety for travelers in Seattle, with no serious injury or fatal crashes



1. Reduce vehicle speeding to increase safety.
2. Focus safety investments on high-collision areas.
3. Make all journeys safer from start to finish.
4. Provide safer routes to schools, parks, transit, and community spaces.
5. Maintain critical access routes and plan for a climate resilient network.

EQUITY

Transportation Justice is Central (TJ)

Goal: Co-create with community and implement restorative practices to address transportation-related inequities



1. Center the voices of underrepresented communities in planning.
2. Prioritize investments in disproportionately impacted communities.
3. Remove cost barriers so everyone can travel as needed.
4. Support shifts toward non-punitive transportation enforcement.

MOBILITY & ECONOMIC VITALITY

Connect People and Goods (PG)

Goal: Provide reliable and affordable travel options that help people and goods get where they need to go



1. Create seamless travel connections.
2. Make walking, biking, and rolling more convenient and enjoyable.
3. Improve access to frequent and reliable transit.
4. Support employment access, freight movement and delivery growth.
5. Manage curbspace to reflect city priorities.

LIVABILITY

Streets for People, Places We Love (PP)

Goal: Reimagine city streets as inviting places to linger and play



1. Reallocate street space to prioritize people while maintaining access for goods and emergency services.
2. Create welcoming community and mobility hubs.
3. Co-create and enhance public spaces for play and gathering.
4. Activate and maintain welcoming, age-friendly public spaces.

SUSTAINABILITY

Climate Action (CA)

Goal: Respond to climate change through innovation and a lens of climate justice



1. Improve air quality by promoting clean transportation options.
2. Green city streets with landscaping and trees.
3. Foster neighborhood vitality and health.
4. Support the transition to electric vehicles.
5. Encourage walking, biking, and transit trips.

MAINTENANCE & MODERNIZATION

Streets that Work, Today and in the Future (MM)

Goal: Improve city transportation infrastructure and ready it for the future



1. Maintain and modernize our transportation infrastructure.
2. Equitably provide neighborhoods with good-quality streets, sidewalks, public spaces, and bridges.
3. Prepare for emerging technologies and new mobility options.

Approach & Process


- 3-year Focus Areas framed by STP Goals & Key Moves
- Applies across all SDOT programs
- Non-exhaustive; showcases strategic priorities
- Aligns with Levy and adopted CIP (no new investments)



STP Implementation Focus Areas

Spotlight Initiatives

SDOT's cross-cutting, citywide priorities to advance the STP

 **Advancing STP Key Moves**
Demonstrating accountability and action on specific commitments

Celebrating Successes

Features on teams and initiatives that exemplify how we're implementing the key moves

Spotlight Initiatives

Responsible Stewardship

- Implement our Vision Zero Action Plan
- Cultivate Equitable Climate Solutions
- Deliver the 2024 Seattle Transportation Levy

Coordinated Operations

- Keep the City Moving 24/7
- Prepare for the 2026 FIFA Men's World Cup
- Minimize Revive I-5 disruptions and support travel alternatives

Transformative Impact

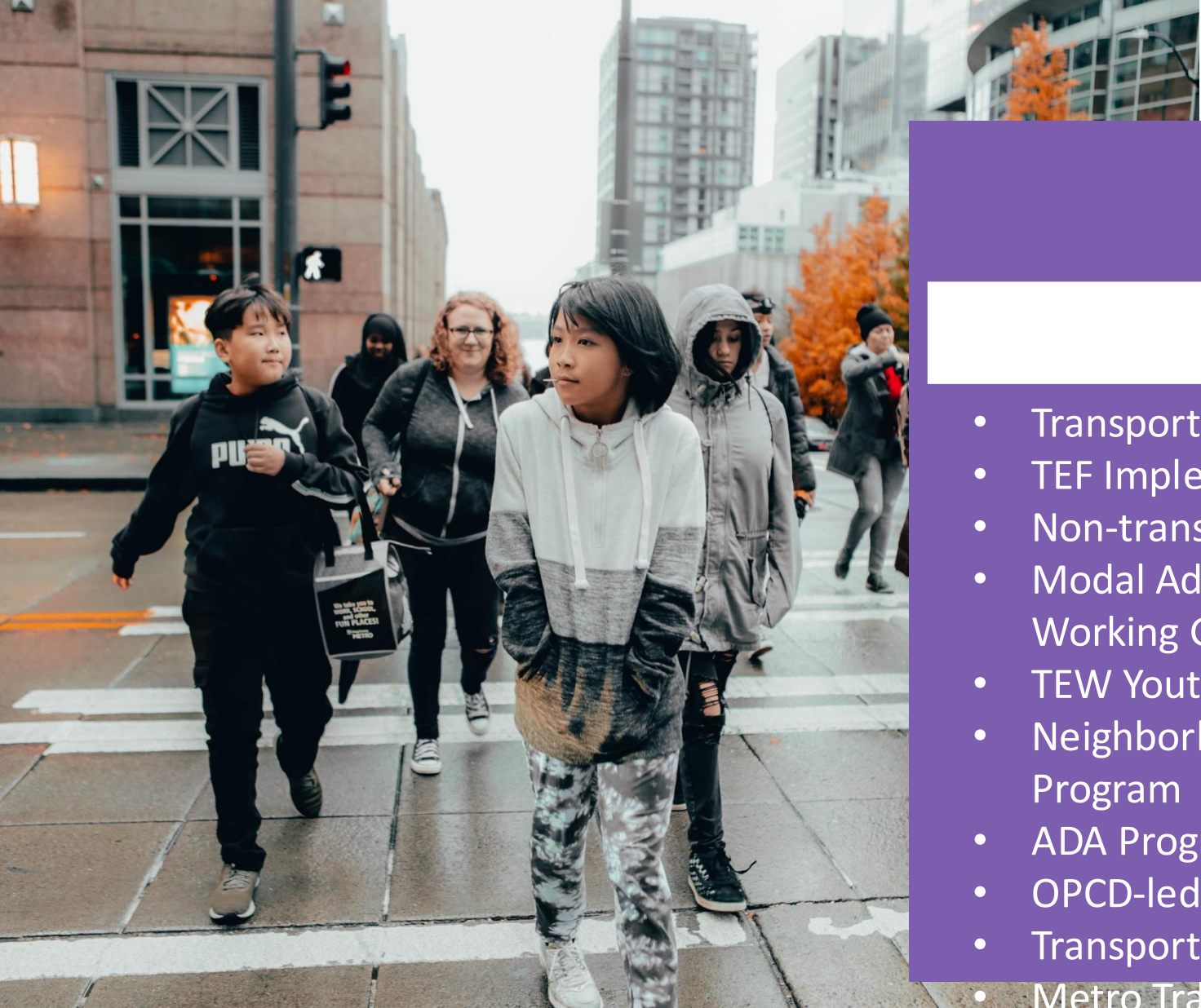
- Advance Aurora Avenue N
- Support Sound Transit 3 (ST3)



SAFETY

- Vision Zero Action Plan Update
- Safety policy and design guidance
- Automated Traffic Safety Cameras
- Data Tools (HIN/BPSA)
- Protected Bike Lanes, Better Bike Barriers
- Transit Passenger Safety
- Freight & Rail partnerships (e.g. Op Lifesaver)
- Street Use Permitting
- SRTS, School Streets
- SDOT Response Team, Snow & Ice Team, Traffic Operation Center





EQUITY

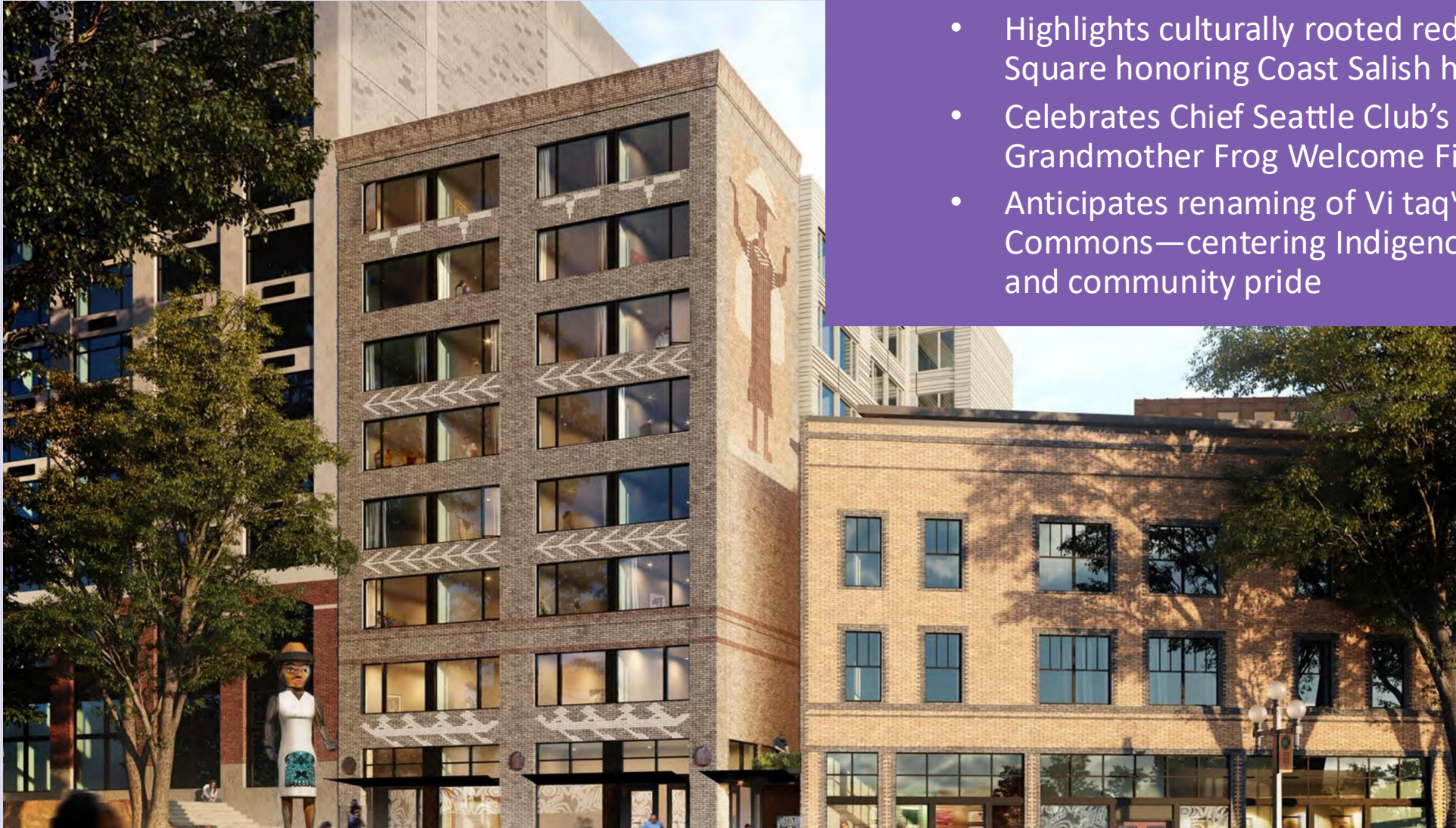
- Transportation Equity Framework
- TEF Implementation Plan Update
- Non-transactional Community Relationships
- Modal Advisory Boards & Transportation Equity Working Group
- TEW Youth Mentorship Pilot
- Neighborhood Initiated Safety Partnership Program
- ADA Program
- OPCD-led Anti-Displacement Work Group
- Transportation Access Programs (STM-funded)
- Metro Tra





Showcasing Projects & Programs

- Highlights culturally rooted redesign of Fortson Square honoring Coast Salish heritage
- Celebrates Chief Seattle Club's ʔálʔal building, Grandmother Frog Welcome Figure
- Anticipates renaming of Vi taqʷšəblu Hilbert Commons—centering Indigenous art, language, and community pride



Center the voices of communities of color and underrepresented groups in our planning and decision-making processes.



SUSTAINABILITY

- Advance Climate Change Response Framework
- Support Climate Action Plan Update (OSE-led)
- Low-Pollutions Neighborhoods
- Expanding tree canopy and manage stormwater
- Expand EV Charging Access
- Commercial E-Cargo Bike Program
- Transportation Demand Management programs
- Transit Spot Improvements
- Major events and construction coordination
- Healthy Streets, Shoreline Street Ends
- Paid Street Parking Program





Showcasing Key Partnerships



Foster neighborhood vitality and improved community health.



**3 LPNs by
2028**



**Community
Conversations**



**Learning
from
Partners**

Expanding EV Charging

Carshare Vendors



**Office of Sustainability
& Environment**



Seattle City Light



E-Cargo Bikes



*Support the transition from fossil fuel to electric vehicles
for personal, commercial, and delivery trips.*



MOBILITY & ECONOMIC VITALITY

- Delivering on Levy Investments
- Support West Seattle and Ballard Link Extensions
- Metro RapidRide Corridors
- Sidewalks and Crossings
- Bike Lanes and Even Better Bike Barriers
- Heavy Haul Network
- Freight-and-Bus (FAB) Lanes
- Port connections to I-90 and I-5
- Technology Programs (ITS, signals & optimization)
- Regional Center Plans
- Seamless Seattle Pedestrian Wayfinding
- Update Restricted Parking Zones
- Digital Tools for Dynamic Curb Management





LIVABILITY

- People Streets and Public Spaces program
- Seasonal street closures
- Neighborhoods Greenways
- Occidental Promenade
- Pike Place Market Pilot
- Downtown Activation Plan (DAP)
- SPARK Block and 3rd Avenue Activation
- Neighborhood and Community permits
- Public space management
- Streets Illustrated Update
- Community and Mobility Hubs
- Link station area planning and design





MAINTENANCE & MODERNIZATION

- Enterprise asset management and work order system upgrade
- ITS Modernization
- Digital Curb Asset Management
- New Mobility Options
- Autonomous Vehicles
- Bridge Preservation program
- Major Arterial Roadway Maintenance
- Construction Hub Coordination
- Community Response Dispatch
- Maintenance & Operations Programs





Showcasing Key Programs

- Maintenance & Operations
- Celebrates varied craft skills across SDOT crews turning plans into reality



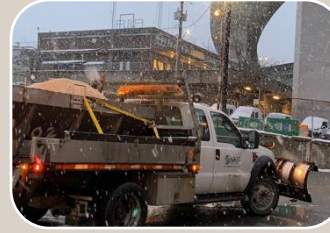
Bridges



Signs & Markings



Community Crossings



Snow and Ice Response



Bike Lanes



Parking



Urban Forestry



Signals & ITS



Public Space Mgmt



Paving



Concrete & Asphalt



Areaways



Street Maintenance



SDOT Response Team



Maintain our streets, sidewalks, and bridges and incorporate planned safety and network improvements with maintenance work.



What's Next

- **September 30: Target to Publish to Webpage**
- **Fall-Winter: Re-engaging with STP Partners**
- **January 2026 Annual Levy Delivery Plan**
- **Spring 2026 STP Performance Report**
- **2028 STP Implementation Plan & Performance Report (Combined)**

Questions & Comments

