

# Interlocal Agreements for Lake Washington/Cedar/Sammamish (WRIA 8) and Green/Duwamish & Central Puget Sound Watersheds (WRIA 9)



Seattle City Council  
Parks, Public Utilities & Technology Committee  
June 25, 2025





An underwater photograph showing several salmon swimming in clear, blue-green water. In the foreground, a large salmon with a prominent red side and dark spots on its back is swimming towards the left. Other salmon are visible in the background, some near a wooden pier structure. The scene is brightly lit, suggesting a sunny day.

# Legislation Today

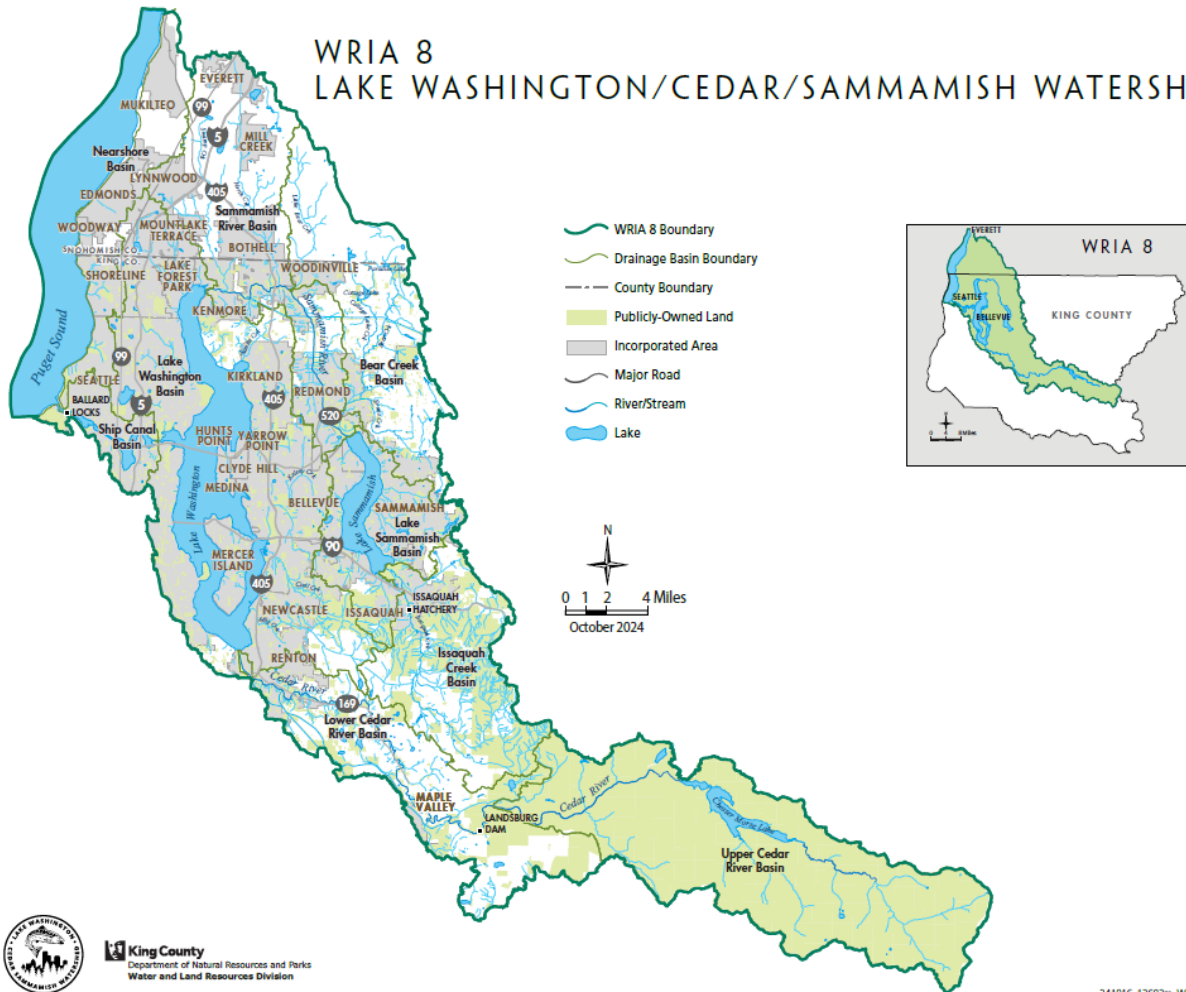
Authorizes SPU's General Manager to sign two interlocal agreements related to Seattle's participation in regional salmon recovery efforts for 2026-2035

- WRIA 8: Lake Washington/Cedar/Sammamish Watershed
- WRIA 9: Green/Duwamish & Central Puget Sound Watershed



# Watershed-Based Approach

WRIA 8  
LAKE WASHINGTON/CEDAR/SAMMAMISH WATERSHED



King County  
Department of Natural Resources and Parks  
Water and Land Resources Division

241016\_13503m\_WB-Watershed

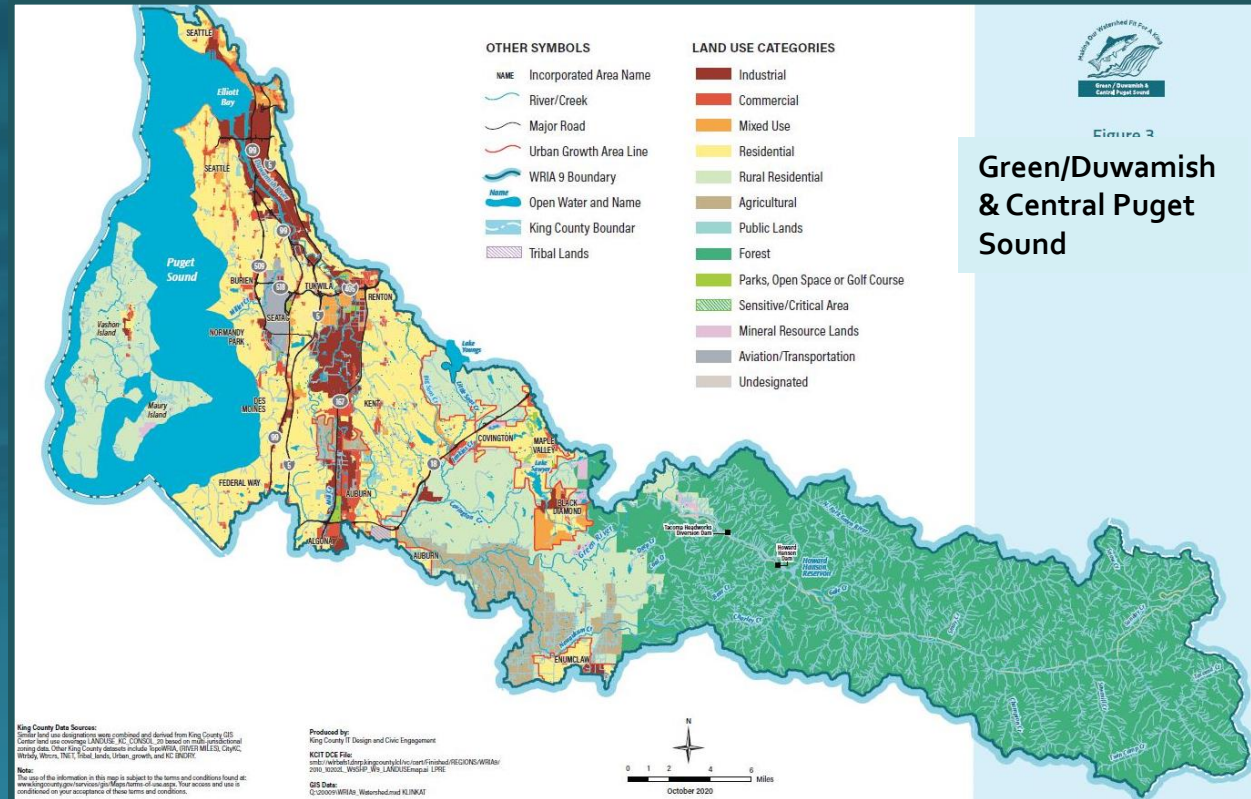


Figure 2

Green/Duwamish  
& Central Puget  
Sound

King County Data Sources:  
Similar land use designations were combined and derived from King County GIS  
Current data sources include: LAND USE, ZONING, and other data from various jurisdictions  
including cities, counties, and the state. Other King County datasets include: AERIAL, 10000 MILES, City of  
Whidbey, WRIA, DNR, State, Lands, Urban, Growth, and RZ, and RZ, and RZ.

Note:  
The use of the information in this map is subject to the terms and conditions found at:  
[www.kingcounty.gov/transportation/maps/terms-of-use.aspx](http://www.kingcounty.gov/transportation/maps/terms-of-use.aspx). Your access and use is  
conditioned on your acceptance of these terms and conditions.

Produced by:  
King County IT Design and Civic Engagement  
KCDI DCE File  
[www.kingcounty.gov/transportation/maps/terms-of-use.aspx](http://www.kingcounty.gov/transportation/maps/terms-of-use.aspx)

2020\_10000\_MILES\_WB\_LANDUSEmap\_LIFE

GIS Data:  
C:\2020\WRIA8\_Watershed.mxd KLMAT

0 1 2 4 6 miles  
October 2020



## ILAs for WRIAs 8 and 9

- ✓ Implementation & adaptive management of watershed salmon habitat plans
- ✓ Governance structure
- ✓ Funding mechanism
- ✓ Annual work plan & budget
- ✓ Technical & regional coordination
- ✓ Previous ILAs: 2001-2006, 2007-2015, 2016-2025

### Seattle Leadership

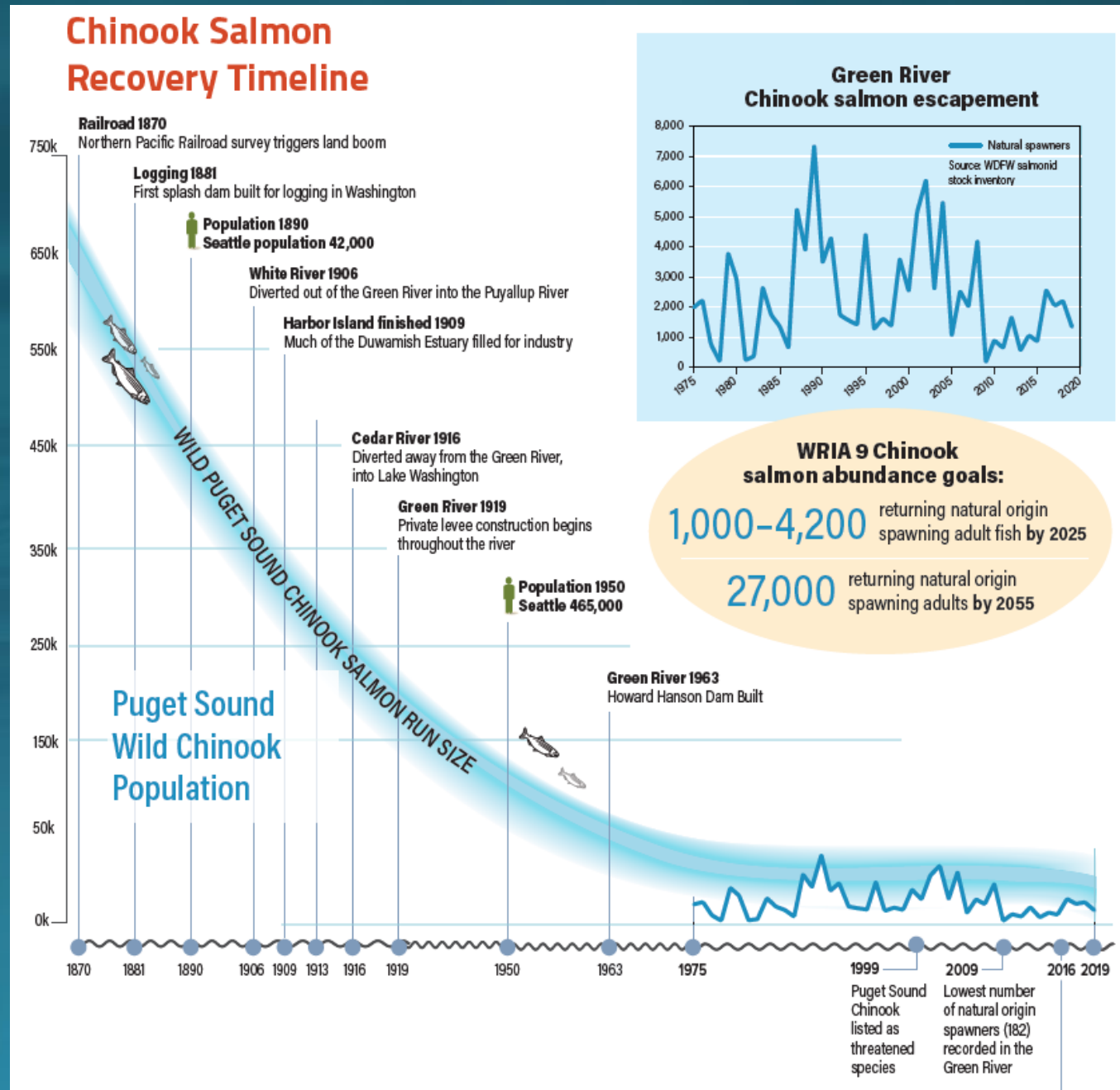
- WRIA 8: Councilmember Rivera
- WRIA 9: Councilmember Saka
- SPU staff lead and alternate
- SPU technical staff
- Coordinate with other departments, esp., Seattle Parks and Recreation



# Chinook Salmon Recovery Background

Regional problem; Regional solutions

- 1999 Chinook salmon ESA listed Threatened for Puget Sound
- 2001 Local governments start working together in watersheds
- 2005 WRIA 8/9 salmon habitat plans first approved; since updated
- 2007 Puget Sound Salmon Recovery Plan approved with local chapters
- Implementation ongoing



# Salmon Habitat Plans

Chinook salmon status assessment

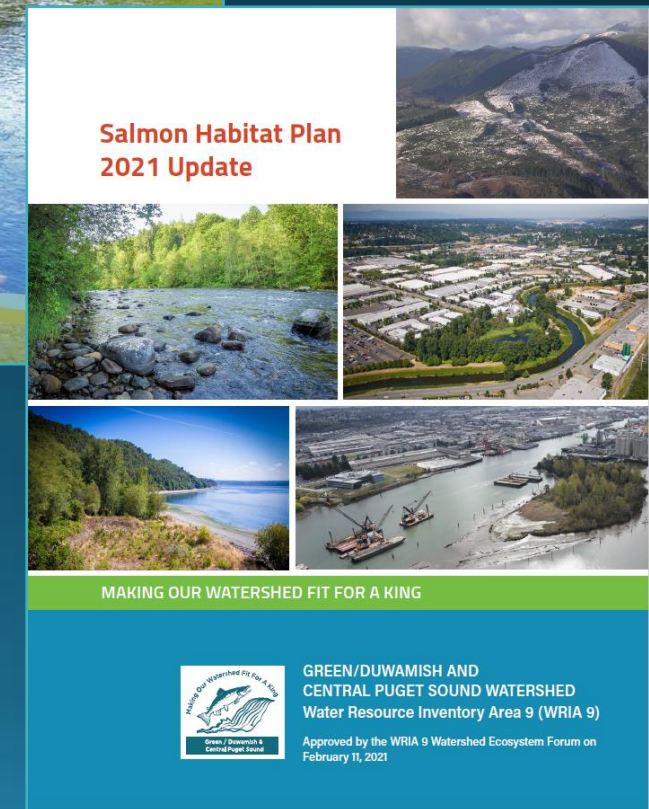
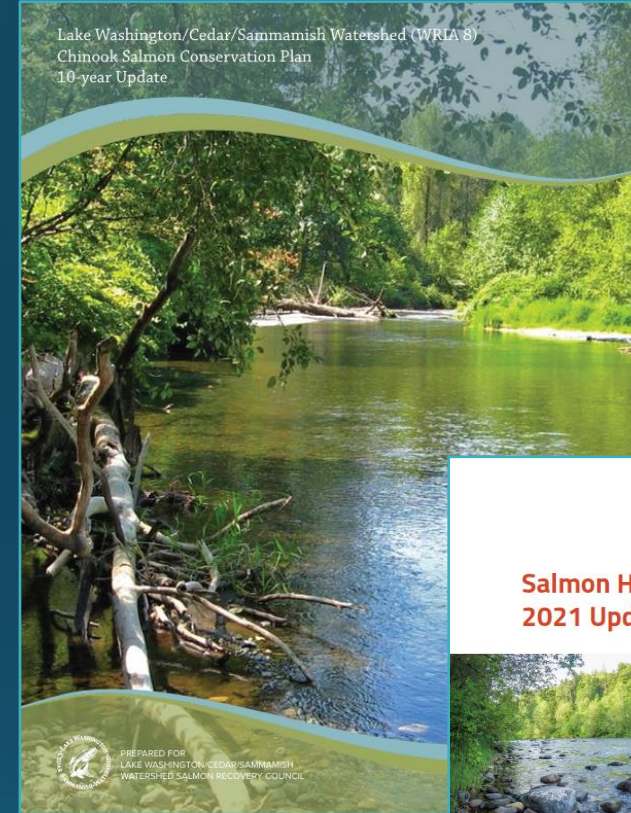
Best available science

Habitat goals

Recovery strategies

Capital project list

Monitoring & adaptive management



# 2025 Work Plans

Watershed coordination

Regional/State coordination

Legislative outreach

Project coordination & implementation

Monitoring & adaptive management



Fenster Levee Setback, Auburn



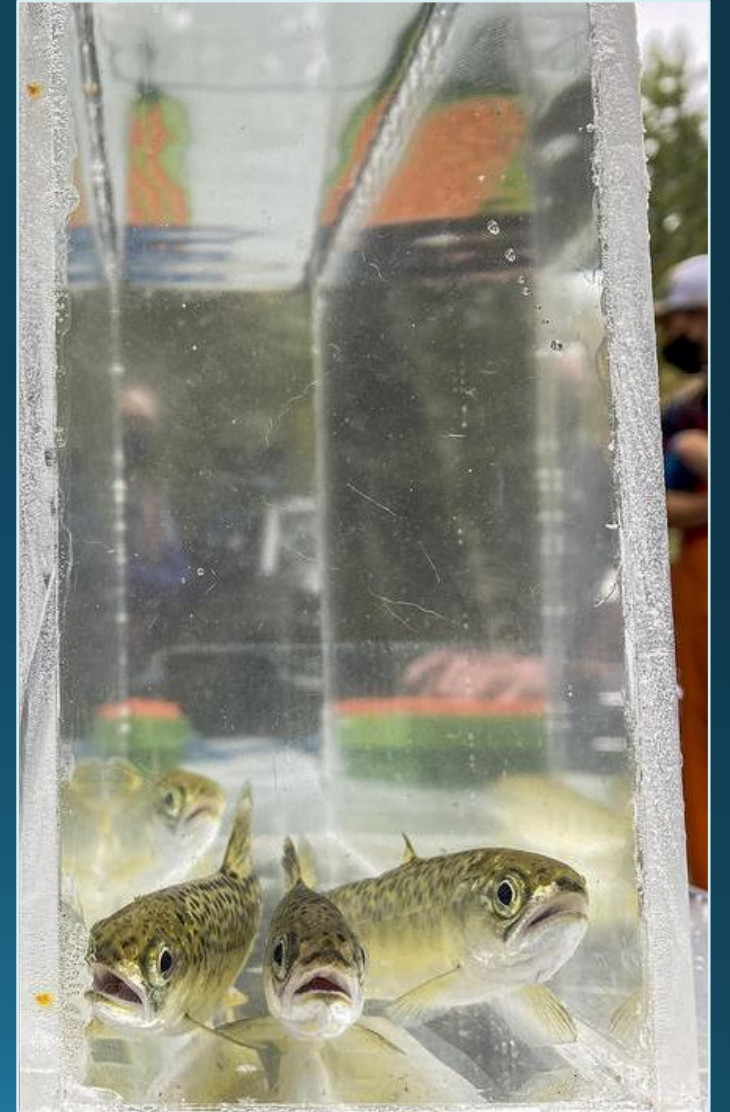
# Funding

## 2025 ILA Funding – WRIA programs

- WRIA 8 \$760,366 (\$193,716 Seattle)
- WRIA 9 \$606,781 (\$157,008 Seattle)
- Cost Share = Avg (% population + % assessed value + % area)

## Grant Funding – Pass through to partners

- \$4.2 Million (WRIA 8/9) Cooperative Watershed Management (King County Flood Control District)
- \$1.45 Million (WRIA 8) / \$1.1 Million (WRIA 9) Puget Sound Acquisition & Restoration
- \$526,634 (WRIA 8)/\$300,000 (WRIA 9) Salmon Recovery Funding Board





# Accomplishments (WRIA 8): 2016-2025

Over \$38 million awarded in grants

200 projects with 22 project sponsors

- 1.2 miles of levees removed or setback
- 70.3 acres floodplain reconnected
- 45.3 miles streamside revegetated

53 outreach & education grants with 13 sponsors

48 monitoring grants with 10 sponsors

---

11 Seattle/SPU Grant Awards

- 4 projects, \$5.8M funding



Upper Royal Arch Floodplain and Habitat Restoration Project – Cedar River



# Accomplishments (WRIA 9)

>\$200 Million of leveraged investments

- ~3.5 miles of levee setback
- >500 acres revegetated
- 1 mile of marine shoreline armor removed

7 Seattle/SPU Grant Awards

- \$1.49M funding (2016-2025)
- \$245k proposed (2025)



Lowman Beach, Seattle



# Questions and Discussion

