

SOUTH PARK PUBLIC SAFETY TASK FORCE: REPORT, RECOMMENDATIONS & IMMEDIATE NEXT STEPS

Gabriela Quintana, Gabriela Quintana Consulting

David B. Mendoza, Mayor's Office of Policy & Innovation

Duwamish Valley Youth Corps

- ▶ Paulina Lopez, *Community Engagement and Outreach Manager*
- ▶ Carmen Martinez, *DVYC Coordinator*
 - ▶ South Park Residents

South Park Neighborhood Association

- ▶ Lora Suggs, *President*
 - ▶ South Park Resident

Sea Mar Community Care Center and Medical Clinic

- ▶ Jorge Madrazo, *Vice President of Community Relations*

South Park Senior Center

- ▶ Dagmar Cronn, *Acting Director, South Park Senior Center,*
 - ▶ South Park Resident

South Park Retail Merchants Association

- ▶ Rocio Arriaga
- ▶ Reynaldo Franco

Latino Community Fund:

- ▶ Jose Manuel Vasquez, *Director of Leadership and Programs*
 - ▶ Former South Park Resident

South Park Information and Resource Center

- ▶ Analia Bertoni, *Program Manager,*
 - ▶ South Park Resident

Seattle Neighborhood Group

- ▶ Linda Spain

Concord Elementary PTA President

- ▶ Robin Schwartz
 - ▶ South Park Resident

TASKFORCE MEMBERS

- Seven of the taskforce members are current residents of South Park
- Five members work or own a business in the neighborhood
- 75% were women and 58% identified as Latinx (with the remaining 42% identifying as White)

METHODOLOGY CONTINUED

- Taskforce met a total of four times
- SWOT Analysis conducted at first meeting
- One on one meetings with city staff as well
- Three in-person meetings to develop recommendations

METHODOLOGY CONTINUED

A decorative graphic consisting of several parallel white lines of varying lengths, slanted upwards from left to right, located in the bottom right corner of the slide.

1) Building a Strong and Resilient Community

➤ *Recommendation A*

2) Physical Safety

➤ *Recommendations B, C, D, E*

3) Investing in Children & Youth

➤ *Recommendation F*

THREE PRIORITY AREAS



- Help navigate city services, departments
- Help build strong relationship with the police
- Convene active organizations in South Park to coordinate efforts
- Provide communications and information about financial opportunities available to the community (ex. Grants, funding opportunities, etc.)
- Coordinate training opportunities for community members
- Provide public safety data

RECOMMENDATION A:

FUND A PUBLIC SAFETY COORDINATOR

- The City has numerous staff whose focus is South Park, some having only recently started, whose purpose to engage with residents and respond to their needs.
- There is collaboration between the Office of Planning and Development and the Office Sustainability and Environment leading an interdepartmental team on the Duwamish Valley. The focus of this group is to develop mid and long term solutions to issues in South Park. Programmatic deliverables from this group will be released before the end of the year.

IMMEDIATE NEXT STEPS



City of Seattle
Mayor Edward B. Murray

- The Department of Neighborhoods (DON) has multiple staff focused on South Park.
 - A strategic advisor who has been assigned to be the “cog” for South Park, identifying and promoting resources.
 - The Community Engagement Coordinator program has a staffer assigned to the South sector which includes South Park. She is the liaison, eyes and ears, point person. DON recently updated these job descriptions to match community needs so public safety is an area where they can help.

IMMEDIATE NEXT STEPS



City of Seattle
Mayor Edward B. Murray

- Install crosswalks at the following intersections which do not have crosswalks at all:
 - Dallas & 14th Ave S./16th Ave S.
 - 12th Ave. S. & S. Cloverdale St.
- Install better signage to alert drivers about pedestrians at:
 - 10th Ave. S. & S. Cloverdale St.
 - 8th Ave. S. & S. Cloverdale St.
- Continue implementation of “Vision Zero” program in the South Park neighborhood

RECOMMENDATION B: IMPROVE PEDESTRIAN SAFETY

- Crosswalk installation at 12th and Cloverdale was selected for 2018 implementation through the *Your Voice, Your Choice* program. At the intersection of Dallas and 14th/16th, it would be difficult to provide a crosswalk due to the bridge configuration, but SDOT will collect data and see where this location prioritizes in our pedestrian master plan.
- SDOT will review the current signage on Cloverdale at 8th and 10th and update signs that are missing or do not meet current guidelines.
- SDOT will work with the community to review Vision Zero data and identify next steps.

IMMEDIATE NEXT STEPS



City of Seattle
Mayor Edward B. Murray

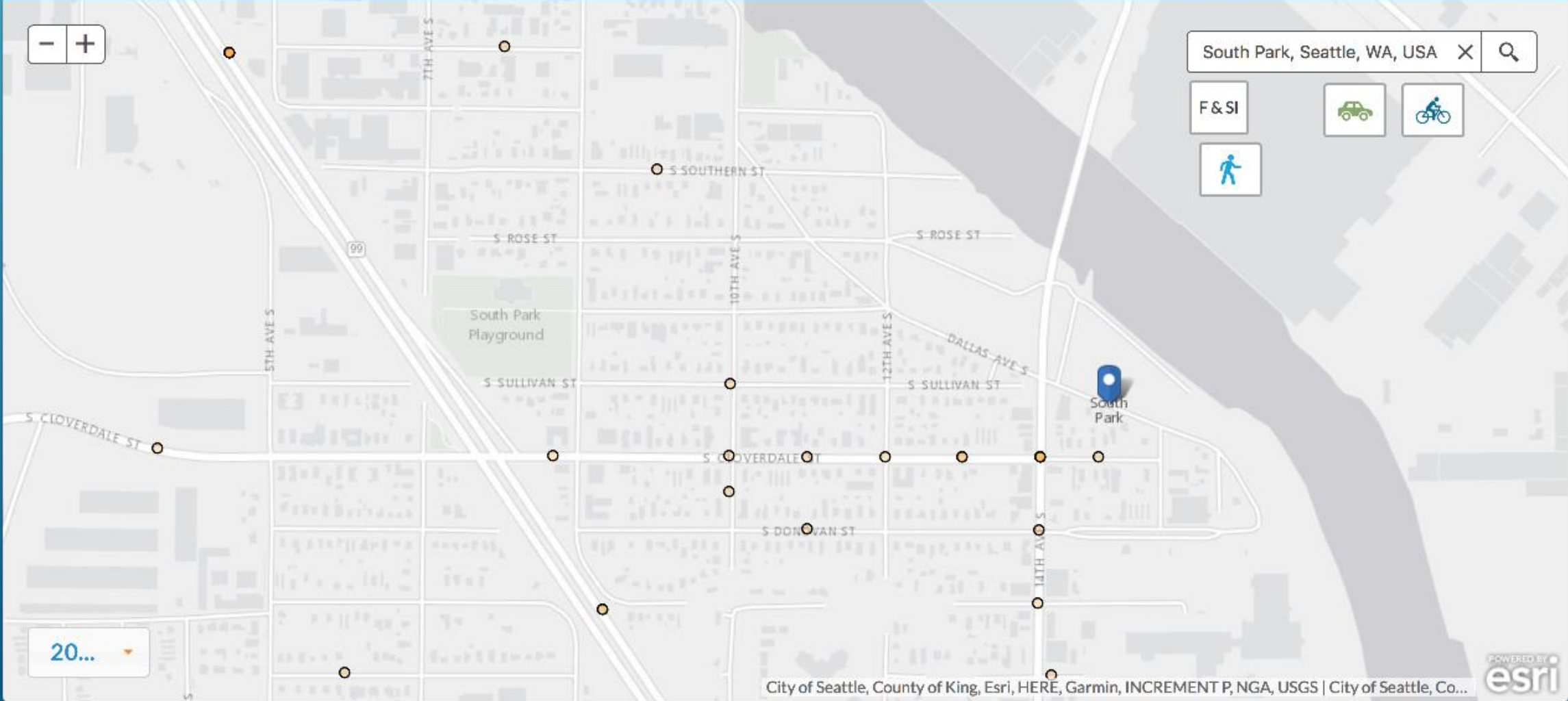


EXAMPLE OF THE NEED FOR BETTER SIGNAGE TO IMPROVE PEDESTRIAN CROSSING AT 10TH AVE. S. & S. CLOVERDALE ST.



Dashboard

Map



- Research possibilities of traffic calming options for large trucks and vehicles turning from the South Park bridge onto S. Cloverdale (south bound)
- Reduce speeding, particularly on S. Cloverdale, from 14th Ave. S. to the 8th Ave. S. entrance to Highway 99
- Install a speed tracker to show how fast cars are traveling
- More enforcement to target vehicles traveling at high speeds

RECOMMENDATION C:

IMPROVE TRAFFIC SAFETY/ENFORCEMENT

- SDOT is reviewing truck turning at this intersection to evaluate options to reduce encroachment on the sidewalk.
- SDOT will collect speed data on Cloverdale to evaluate vehicle speeds and identify next steps

IMMEDIATE NEXT STEPS



City of Seattle
Mayor Edward B. Murray



EXAMPLE OF LARGE VEHICLES TURNING
SOUTHBOUND FROM BRIDGE RUN VERY CLOSE TO
THE SIDEWALK AND BUILDING

- Light the 8th Ave Walking Trail (“scary trail”)
- From 8th Ave. S. to 14th Ave. S., light the two alleys that run between Cloverdale and Donovan
- Install lighting near the onramp to Highway 99 and the skate park

RECOMMENDATION D:
LIGHT DARK ALLEYS AND CRIME HOTSPOTS

- SDOT will work with SCL to review options for retrofitting the existing lighting along the 8th Avenue walkway.
- Requests for alley lighting to address criminal activity typically start with SPD. Once we receive lighting request, SDOT will work with SCL to review feasibility and plan for implementation.
- SDOT will work with WSDOT and SCL to review lighting near the onramp, and will research skate park ownership to determine who would be responsible for lighting there.

IMMEDIATE NEXT STEPS



City of Seattle
Mayor Edward B. Murray

- Figure out strategies with the community to clean up garbage “hot spots” at least twice a week, particularly on S. 96th St. at the intersections of 4th Ave S. & 8th Ave. S.
- Work with the community to figure out enforcement and outreach mechanisms to ensure that local businesses are also cleaning up their property

RECOMMENDATION E:

PROVIDE MORE FREQUENT GARBAGE PICKUP

- Seattle Public Utilities (SPU) has a team that cleans up illegal dumping, needles and graffiti on public property. SPU has heard about the garbage concerns from South Park and has responded with increased checks and cleaning of dumping hot spots.
 - The best way is to inform SPU of use the City's *Find It, Fix It* application. Illegal dumping on public property can be reported online. Graffiti on public property online or by phone.
- SPU regularly partners with the community to keep neighborhoods clean and storm drains clear. SPU runs *Adopt a Drain and Adopt a Street* programs which individuals or organizations can sign up to participate. In April and May each year, individuals or organizations can organize a Spring Clean and SPU will provide technical support and supplies!

IMMEDIATE NEXT STEPS



City of Seattle
Mayor Edward B. Murray



- Redirect priorities of current staffing at the community center to meet the needs of the young people.
- Work with the community to find ways to make the community center more accessible to residents, and the space should be more affordable and flexible to meet the community needs
- Ensure a police liaison works with youth to provide crime safety, crime prevention training, and work with youth to be ambassadors to the community

RECOMMENDATION F:

FUND OPPORTUNITIES FOR CHILDREN AND YOUTH IN THE COMMUNITY

- Community Center Programming
 - Seattle Parks and Recreation staff prioritize youth programming. The South Park Action agenda drove the new funding for the recreation specialist who now has a large roster of free or low cost programs for the community youth, with much fewer adult programs.
 - Free and accessible: 19 free programs and 12 low cost. 21 free programs for families. Increase in participation: 671 more youth participating – 716 more adult participating in program
 - Over 2,000 youth and young adults attending late night this year – an increase from last year.
- New park property purchased next to the bridge: design process will start in 2018. Working with community to activate the site to make it welcoming and to reflect the community.

IMMEDIATE NEXT STEPS



City of Seattle
Mayor Edward B. Murray

- Hours have been expanded in February 2017 to provide additional programming hours; from 45 to 61 hours per week. Monday – Thursday the center closes at 9:00pm. On Friday's the center closes at midnight staying open for late night programing, it closes at 5pm on Saturday. 5:00pm Since 2016, community visits to the center have increased 26% from 44,590 to 56,000.
- There is no charge for local South Park community meetings if space is available during operating hours. Parks provides the *Recreation for All* special grant funds to groups to provide community programs. In some case rental fees can be significantly reduced (\$15/hr vs. \$30/hr). When the community rents after hours, rental fees apply plus payment for staff person to be on site (\$25/hr).
- The City Council, not the Department of Parks and Recreation, is responsible for setting rental rates, so that there is consistency across the city.
- OPI will contact SPD to discuss the possibility of greater engagement with youth in South Park.

IMMEDIATE NEXT STEPS



City of Seattle
Mayor Edward B. Murray

- Provide employment opportunities, or monetary compensation, for youth to work in the community (be sensitive of immigration status and work with community to come up with strategies for payment)
- Provide more scholarships for the community center activities (including early learning programs) and make it more accessible to all, especially low income families.
- Change the criteria for scholarships to meet needs of youth who may be undocumented

RECOMMENDATION F:

FUND OPPORTUNITIES FOR CHILDREN AND YOUTH IN THE COMMUNITY

- Scholarship Program
 - Scholarship criteria aligns with all other city departments. Any changes would need to be approved by City Council as all city departments use the Federal Poverty guidelines.
 - If families are on the Utility Discount program they can bring in their bill and not have to repeat the paperwork. Parks has staff available to help parents fill out the documents.
 - The goal that of the Parks Departments focus on free programs at South Park Community Center is to help offset the scholarships needed. This year the scholarship program for summer camps was depleted citywide.
- 103 youth with paid internship programs – made solid partnership with Mayor’s summer youth employment program.

IMMEDIATE NEXT STEPS



City of Seattle
Mayor Edward B. Murray



AUGUST COMMUNITY MEETING: URGENCY AROUND PUBLIC SAFETY ISSUES