

north seattle industrial association

Serving a thriving maritime, fishing and industrial business community



north seattle industrial association

Serving a thriving maritime, fishing and industrial business community

Today's speakers:

- I. Eugene Wasserman, North Seattle Industrial Association
- II. Elliot Strong, Coastal Transportation
- III. Sarah Scherer, Seattle Maritime Academy
- IV. Ken Sanderson, Sanderson Marketing Group



north seattle industrial association

The premier business organization
for north seattle maritime, manufacturing and industrial support
businesses and its property owners.





Lake Washington Ship Canal Highway

Our Maritime, Fishing and Manufacturing Industry Matters.

Maritime industry: Annually worth \$30 billion to the state economy

Employs 57,700 workers

Average salary of \$70,800 – nearly \$20,000 above the state's median salary!

Fishermen's Terminal is home to about 400 boats and 3,400 jobs

Seattle's fishing fleet accounts for about 40% of the U.S. commercial fish catch every year

Our 36 seafood processing companies account for 82% of Alaska seafood production



north seattle industrial association goals:

- Continue the **economic viability** of businesses
 - Increase **economic growth** for our city
- Provide gainful employment and **family wage jobs**
- Be responsible members of our local communities
both **socially and environmentally**



north seattle industrial association focus:

Transportation, land use and environment issues that impact our members.

Shoreline Master Program Update ◇ Viaduct redevelopment/tolls ◇ Mercer Corridor development

Burke-Gilman bicycle trail ◇ New Ballard Bridge ◇ Homeless issues

Sound Transit service to the neighborhood

Port of Seattle development in Interbay ◇ Maintaining truck access on the Central Waterfront

Freight Master Plan Update ◇ City employee regulations and dozens of other important issues



north seattle industrial association

Serving a thriving maritime, fishing and industrial business community

Key Programs

- I. Monthly Membership meetings
- II. eNewsletters with policy background and issue statements
- III. Weekly traffic and construction updates
- IV. Initiatives to promote our industry and its businesses





Connecting
Western Alaska
to the World

Elliot Strong
Vice President of Freight Traffic
Coastal Transportation



Sarah Scherer
Director/Associate Dean
Seattle Maritime Academy

Who is SMA?

- Prof/Tech
- 1+ year
- Confident & Competent
- Filling the gaps
- Rebuilding the middle class



JOIN OUR CREW



SEATTLE
MARITIME
ACADEMY



SET A NEW COURSE!



For information on applying to SMA:
seattlecentral.edu/maritime/index.php

Seattle Maritime Academy
Seattle Central Community College
4455 Shilshole Avenue NW
Seattle, WA 98107-4645

206-934-2647

Seattle Maritime Academy (SMA) is Washington State's maritime school. SMA is located in the northwestern section of the city of Seattle in the Ballard neighborhood. The campus is situated on 2.2 acres of waterfront bordering Lake Washington Ship Canal adjacent to the northeast abutment of the Ballard Bridge.

Our campus office is open to the public
8:00 am to 5:00 pm Mon-Fri.

Photos courtesy of SMA graduate Jonathan Peirce

SMA - 2 Prof/Tech Programs

DECK

- Able Seaman-Special
- Lifeboatman
- RFPNW endorsements.
- To receive credit for a license as Master of Inland Steam or Motor Vessels of Not More Than 100 Gross Tons OR 240 days sea service credit towards a license as a Mate Coastal Steam or Motor Not more than 200 Gross Register Tons
- Qualify (receive 180 days sea service credit towards) for a license as Apprentice Mate (Steersman) of Near Coastal Uninspected Towing Vessels with an additional 12 months of service on board a towing vessel.

ENGINEERING

- QMED
- Ratings Forming Part of an Engine Room Watch endorsements.
- Ratings of oiler, junior engineer, refrigerating engineer, electrician, and pump man
- Eligible for fireman/water tender if their 60-day at-sea student internship is on steam vessels.
- Be eligible to take an examine for Designated Duty Engineer Limited – 1000 Horsepower w/4 months of sea service as QMED

Find us on:  



Assistant Engineer Uninspected Fishing Vessels

This course was specifically developed for individuals working in the fishing industry. The U.S. Coast Guard now requires there be at least one credentialed engineering officer aboard a fishing vessel if there are watch requirements. Successfully completing this course meets this requirements. This course is comprised of 3 two week modules. Registration is required. See contact info on tear off tabs.

May 9—May 20	Module 1: General, Electrical & Refrigeration Systems
May 23—Jun 6	Module 2: Marine Diesel Engines & Auxiliary Boilers
Jun 13—Jul 1	Module 3: Safety, Emergency Equipment & Lifesaving Devices

Cost for all 3 modules: \$2400

(Limited Scholarship \$ available through Port Jobs. Ask us how to get it!)

Seattle Maritime Academy
4455 Shilshole Ave NW
Seattle, WA 98107
206-934-2647


SEATTLE CENTRAL
COLLEGE
Seattle Maritime Academy

Uninspected Fishing Vessel Engineering License

Training Vessels



Future Programs

- Marine Engineering Apprenticeship
- Maritime Pre-Apprenticeship
- Experience Maritime Project



Community Outreach & Continuing Education





Copyright © 2016



Ballard Blocks – TJS,
Ross, etc

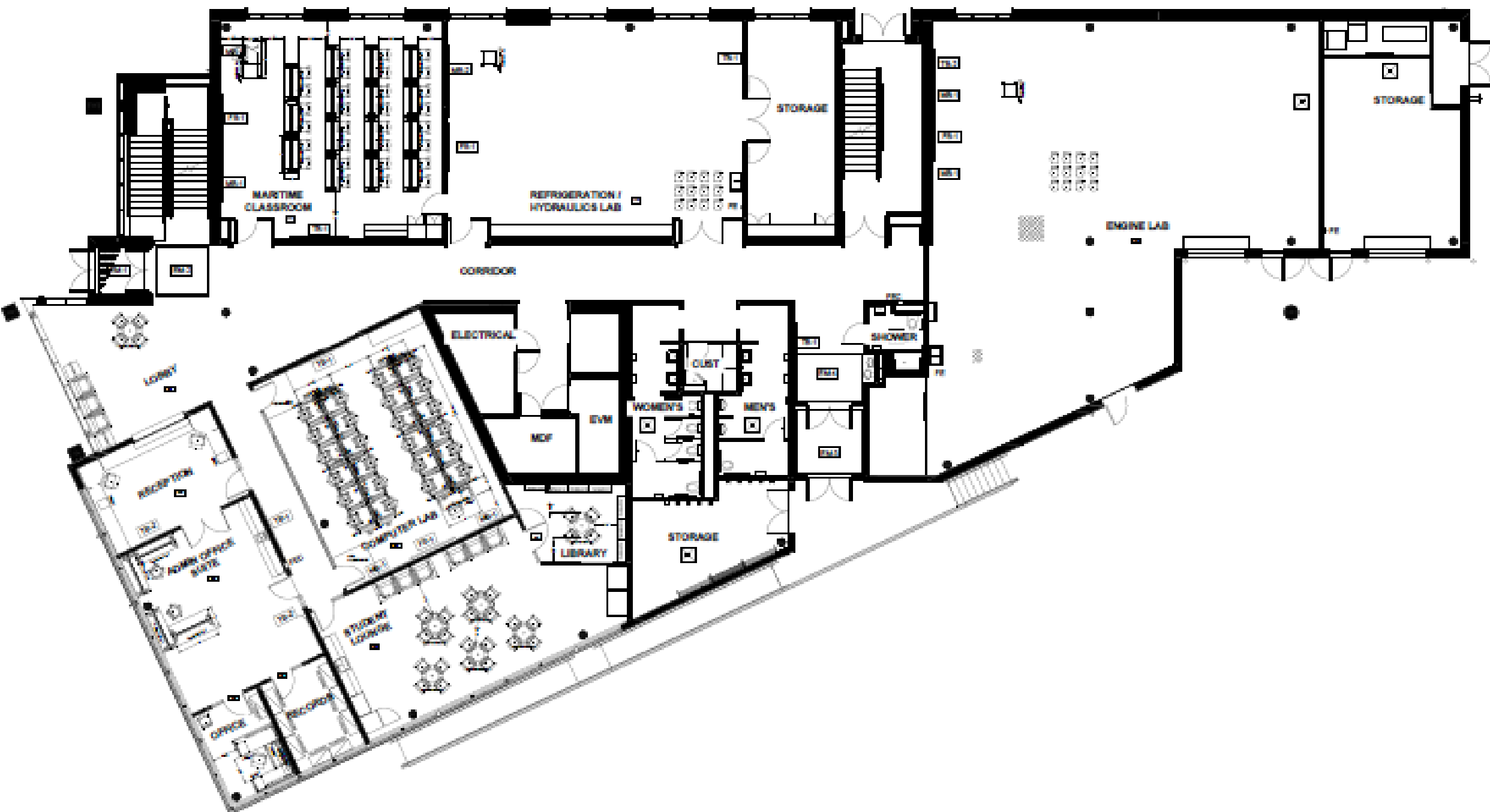
Public Boat Ramp – 14th

Shilshole Ave NW

SMA

Ballard Bridge – 15th

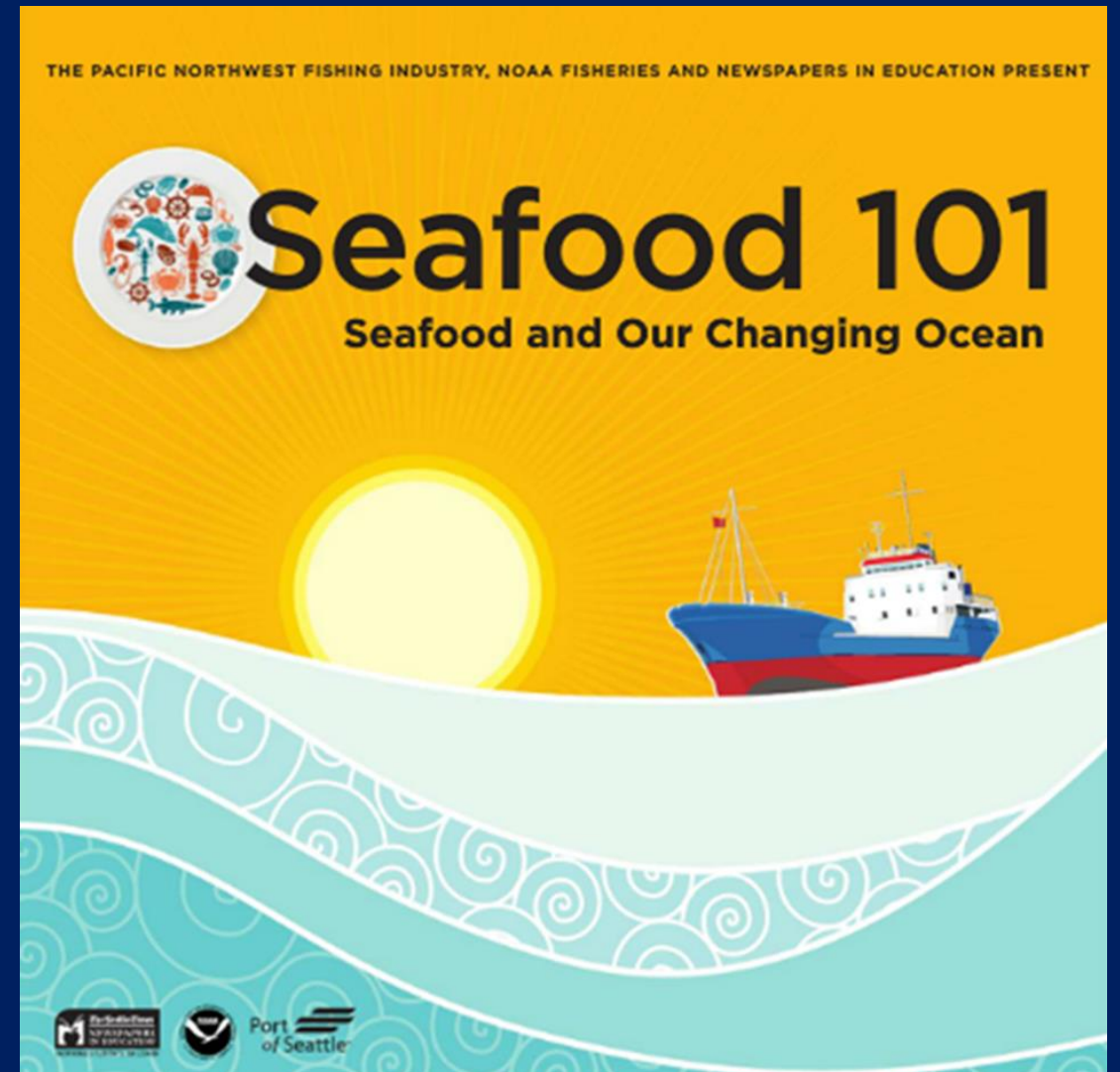
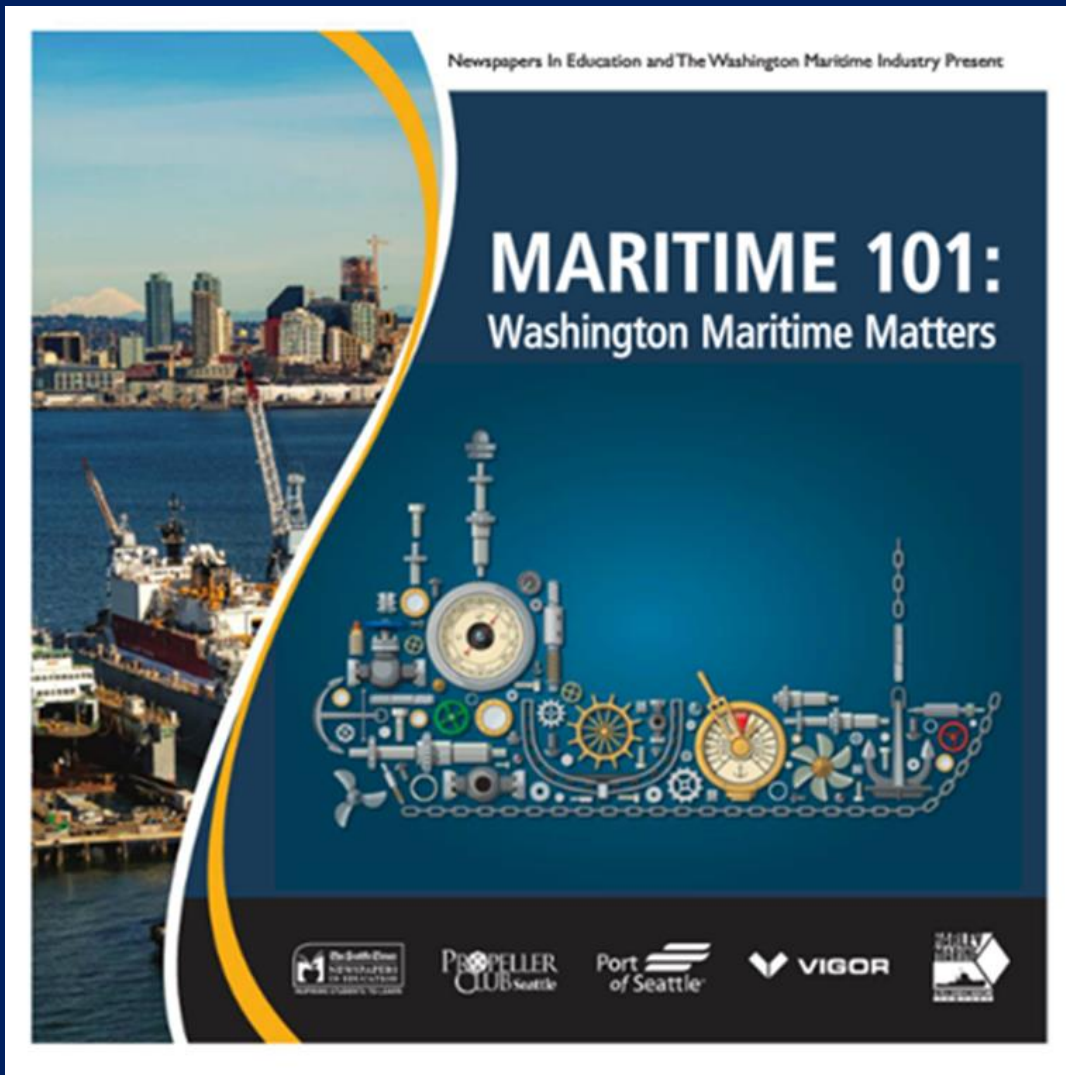






Seattle Maritime Academy





Ken Sanderson
Sanderson Marketing Group

north seattle industrial association

Serving a thriving maritime, fishing and industrial business community

Key Annual Educational Initiatives

- I. Maritime 101 Campaign: April - May
- II. Picnic in the Park: June
- III. Seafood 101 Campaign: October - November
- IV. Annual Maritime Economic Forecast Breakfast



north seattle industrial association

Serving a thriving maritime, fishing and industrial business community

www.NorthSeattleIndustrialAssociation.org

