

Georgetown Flume Property Transfer Ordinance

Presentation to City Council

Transportation and Utilities Committee

December 1, 2021



Seattle City Light

WE POWER SEATTLE

Last Council action in a series of steps to create off-leash area and trail in Georgetown

+ Prior Council steps:

- Approved Ordinance 126306 on April 12, 2021, to formalize Seattle Public Utilities' rights to maintain storm drain under the property
- Approved Ordinance 126328 on May 10, 2021, to authorize temporary easement to King County to resolve a small encroachment on the property
- Granted conditional approval for City Light's street vacation request in Clerk File 314451 on August 9, 2021

What this ordinance accomplishes

- + Declares the property surplus to City Light's utility needs
- + Makes minor correction in King County's temporary easement previously authorized by City Council
- + Transfers jurisdiction of the property to Parks and SDOT
- + Implements one of the major components of the requirements of City Light's previously approved street vacation
- + Allows Parks and SDOT to proceed with creating the off-leash area and trail for the community, on the property

Property location in Georgetown



Boeing Field

Boeing

Flume Property

East Marginal Way S

Georgetown

Ellis Ave S & S Myrtle St, Seattle, WA 98108

E Marginal Way S

Ellis Ave S

Flora Ave S

Carlton Ave

S Willow St

S Brighton St

S Orchard St

S Webster St

S Austin St

S Myrtle St

S Myrtle St

S Myrtle St

S Myrtle St

S Myrtle St

S Myrtle St

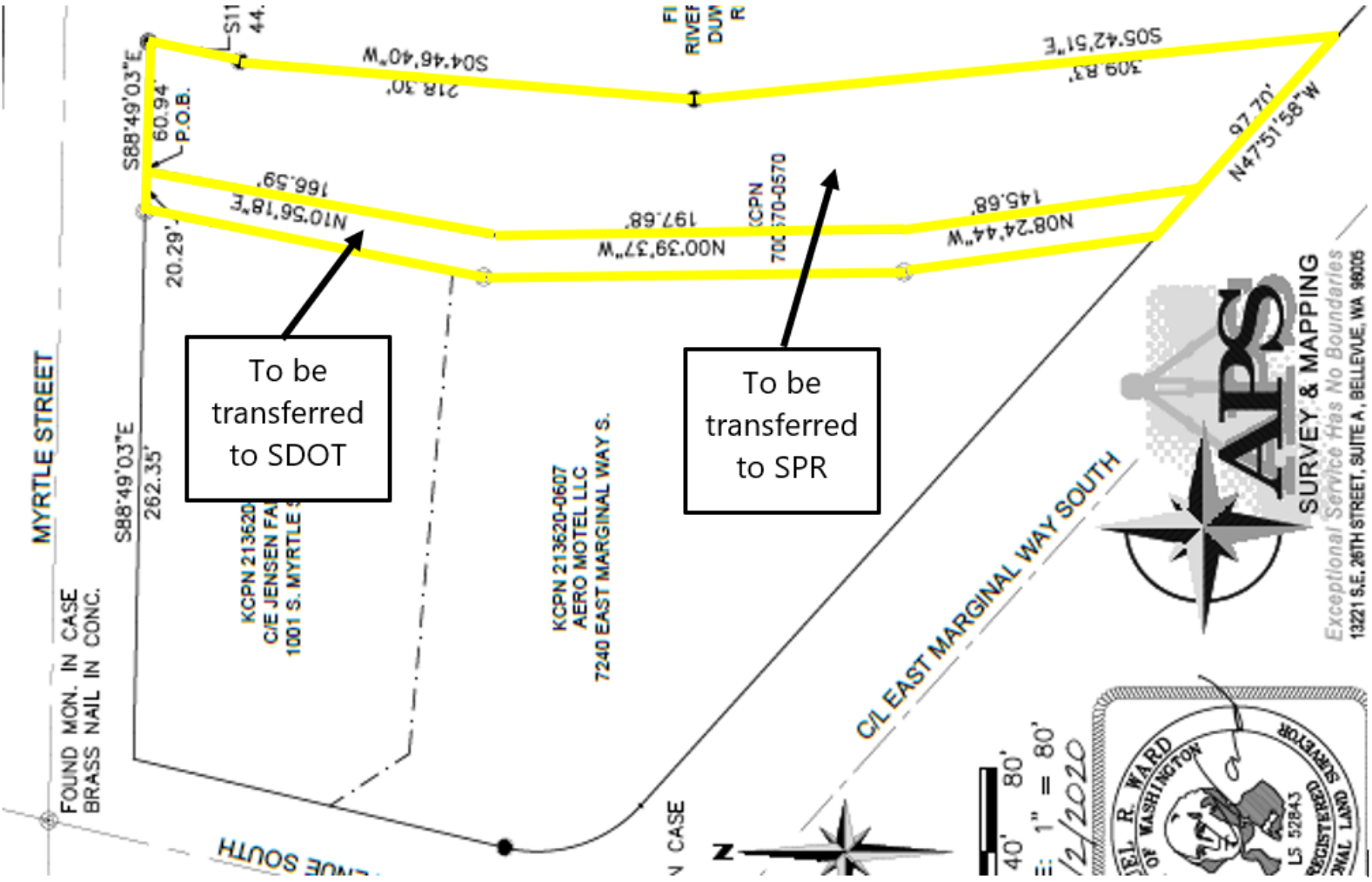
S Myrtle St

S Myrtle St

S Myrtle St



Parcels to be transferred



General depiction of off leash area & trail segment



THANK YOU



Seattle City Light