

KCRHA Spring 2022 Update

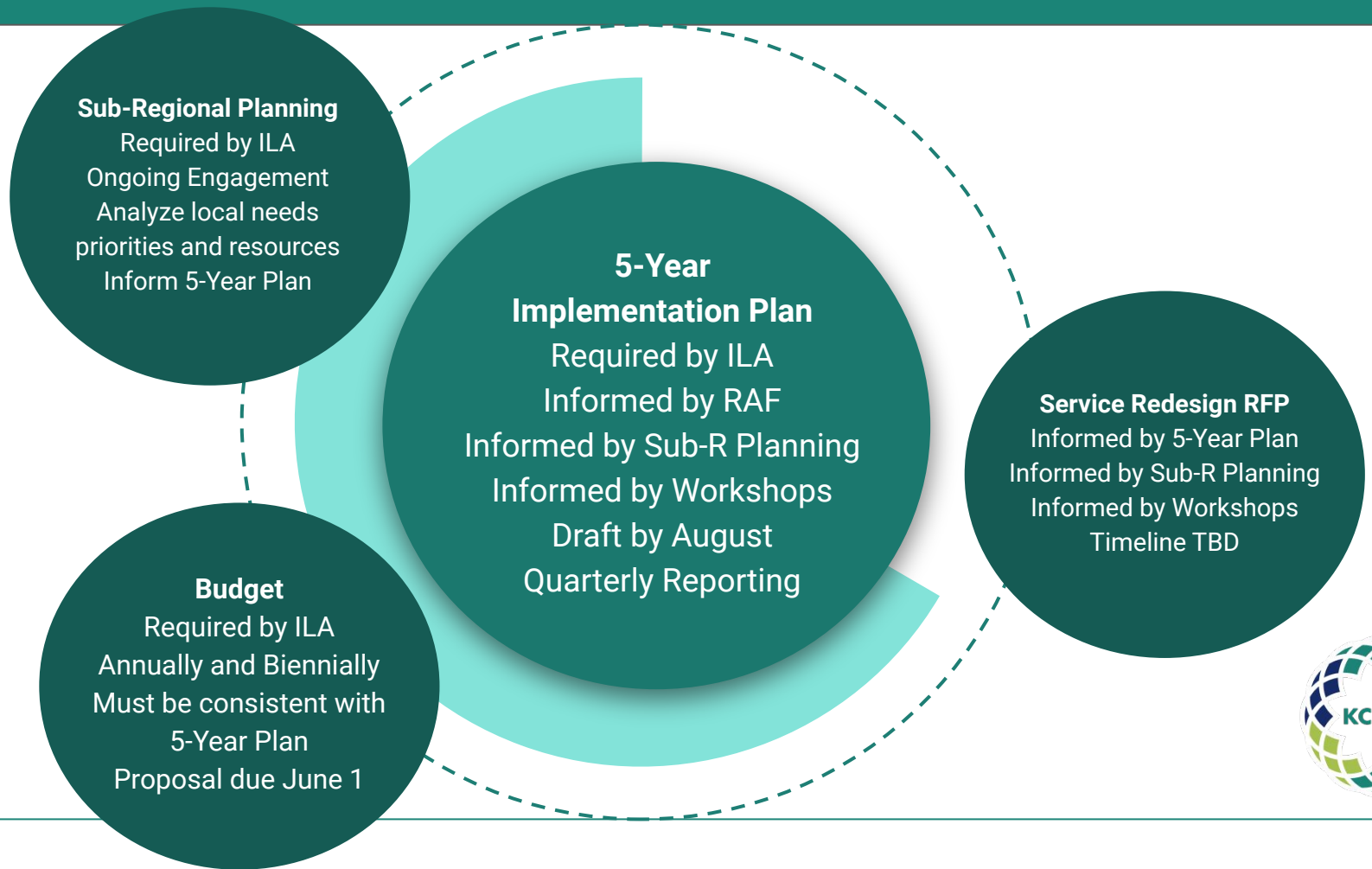
Seattle City Council Homelessness and Public Assets Committee
May 4, 2022



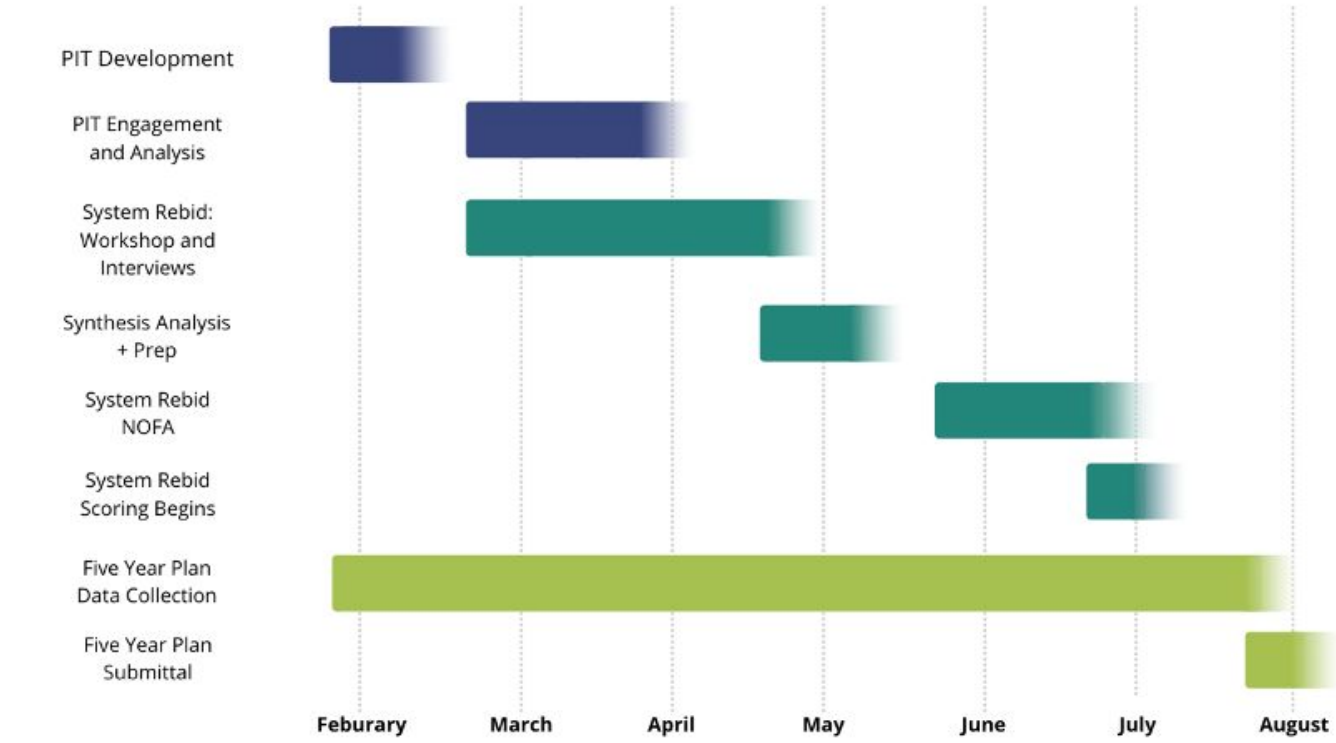
KCRHA
King County Regional Homelessness Authority

Budget and Five Year Plan





KCRHA Budget and Planning: Updated Timeline



KCRHA Budget

- Five Year Plan: August 2022
 - Informed by: Community Engagement Process
 - Includes: Subregional Planning
- Six Year Budget Development
 - Informed by: Community Engagement Process and 2023 budget
 - Includes: Projected budgets through 2028



Understanding Unsheltered Homelessness (UUHP)



Approach

- Conduct a head count of unsheltered individuals
- Conduct a count of people currently in shelters
- Develop a qualitative data collection strategy with customers, providers, and human services staff



Hub and Spoke Model: Wave Sampling



Interviewer conducts the initial interview and hands the person a gift card and a coupon.



Initial interviewee reaches out to their network to give them a coupon to bring to the Hub.



People with coupons bring them to the hubs to be interviewed and receive their gift cards.



Results

- Qualitative interviews with people who are living unsheltered in King County in month of March
 - Interview questions were developed through 12 design workshops with nearly 200 participants
 - Interviewers from LEC and RHA trained and in the field
- Unsheltered count to submit to HUD is built into methods and design of how we'll do interviews
 - Over 650 interviews with people who are living unsheltered in King County



Programs



Non-Congregate RFP

Awards:

- **Chief Seattle Club**
 - \$1.9m (\$1m development, \$900,000 operations and services)
 - 25 tiny house units
- **PDA**
 - \$1.5m - operations and services
 - 84 hotel rooms
- **Catholic Community Services**
 - \$471,550 (\$310,500 development, \$161,000 operations and services)
 - 25 Pallet shelters
- Awards affected by loss of Commerce funds are made whole with ESG-CV funds
- Total of 134 shelter beds
 - Could serve more people if spaces allow couples
 - Depending on program models



RV Safe Lot RFP

- 2020 Point-In-Time Count recorded 2,748 individuals living in vehicles. We believe this is an undercount
- An initial \$1.9m for site development, housing search services, on-site program operations, on-site behavioral health and support services for adults living in recreational vehicles
- KCRHA has increased the potential award to \$2.4 million using underspend



High-Acuity Shelter - Partnership with King County

- 5 year SODO lease approved by King County Council on 5/2
- Preserves existing 270 bed Salvation Army shelter
- Adds enhanced shelter and behavioral health services for up to 150 additional persons, including 40-60 beds for individuals with acute behavioral health needs
- Relocates the Sobering Center
- New safe parking and services for individuals living in RVs
- Seattle has historically funded the Salvation Army 270 bed shelter, and the Council's added \$5m to the 2022 budget will be used to support individuals with behavioral health needs



South End THV

Question: How to fund the \$500k in operating costs to get this THV operational?

- This proposal ranked fourth in our legally required competitive bidding process
- The proposal as submitted did not include the information that the THV was already built with donated funds
- We are evaluating a proposal from LIHI, and working to identify a source of funds



Camp Second Chance

- Funding for Camp Second Chance has been added to the program's Project Service Agreement
- KCRHA staff remain available to support the operator's development process



System Advocates/Peer Navigation

System advocacy is a key part of our Partnership for Zero plan

- Hired four Co-Directors, each with distinct expertise
- Hiring is underway for the team leads
- The team has been focused on developing program recommendations, operating protocols, and training materials for the peer navigators



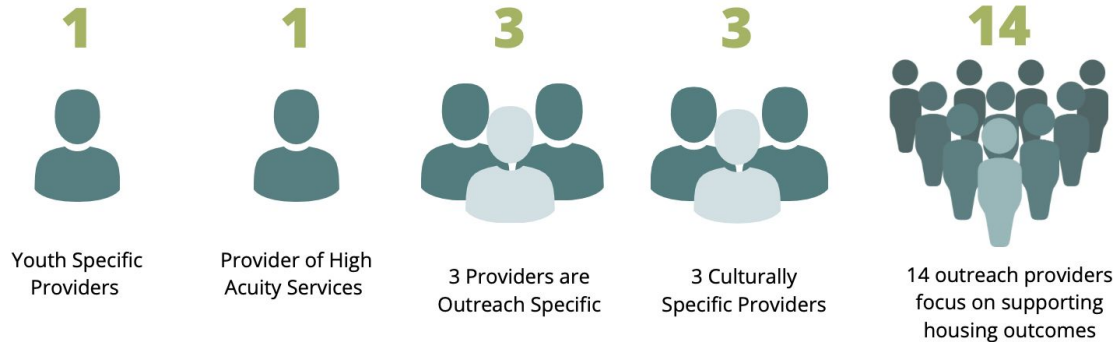
Outreach



Where are we now?

RHA currently holds 17 outreach contracts

- 1 serves the youth population
- 1 provider serves high acuity needs
- 3 providers are currently outreach specific
- 3 are culturally specific to address the needs of marginalized populations
- 14 outreach providers are centered to support the organization's housing program outcomes

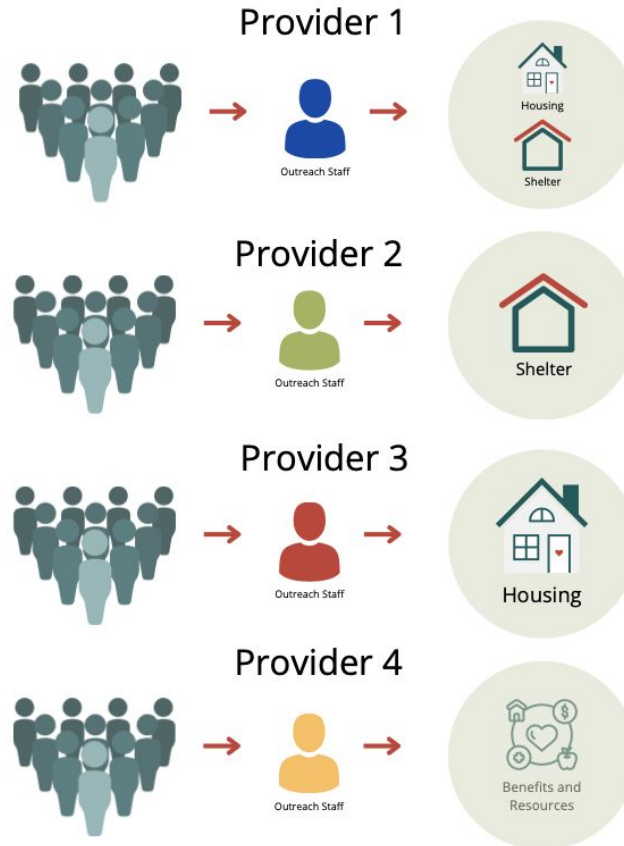


Current State

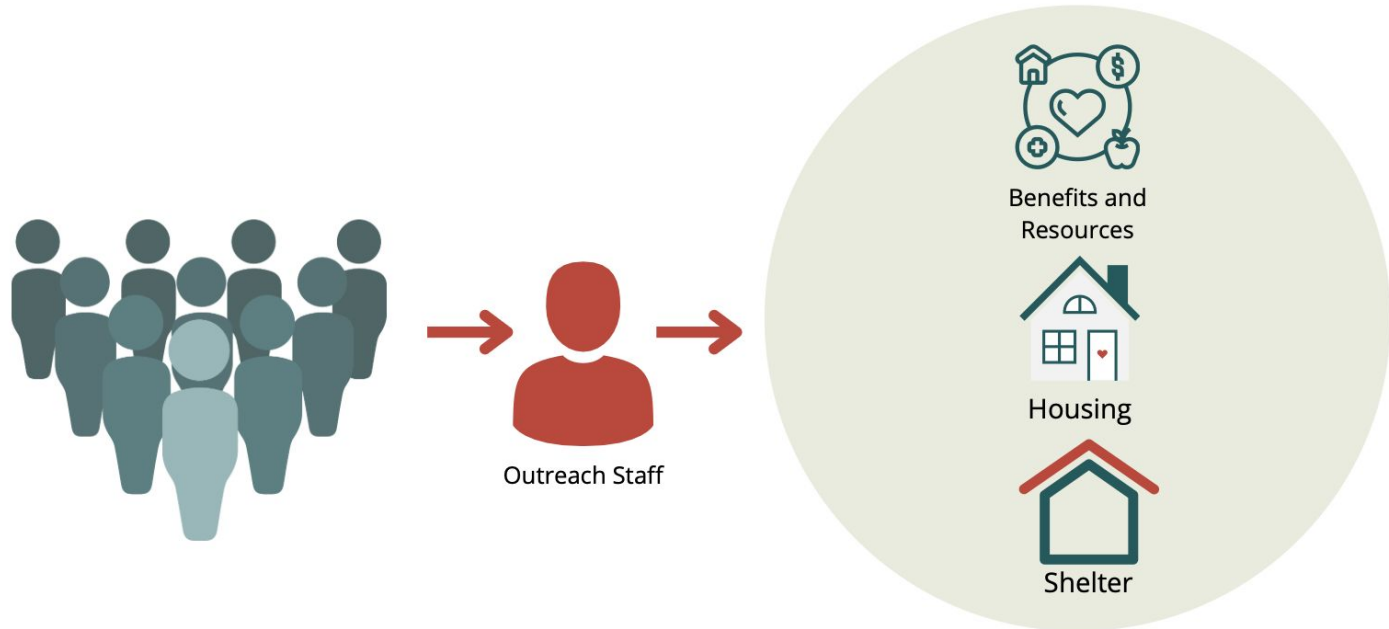
- Provider outreach contracts are set up as a branch of service to bridge to current housing contracts
 - For ex.
 - Housing Provider
 - Outreach provider engagement contract to drive the work of the provider
 - Shelter Placement
 - Transition Housing
 - Rapid Rehousing
 - Diversion Services



Outreach: Current System



Outreach: Future System



Thank You

www.KCRHA.org
info@kcrha.org
[@KC_RHA](#)