

The Role of Hospital

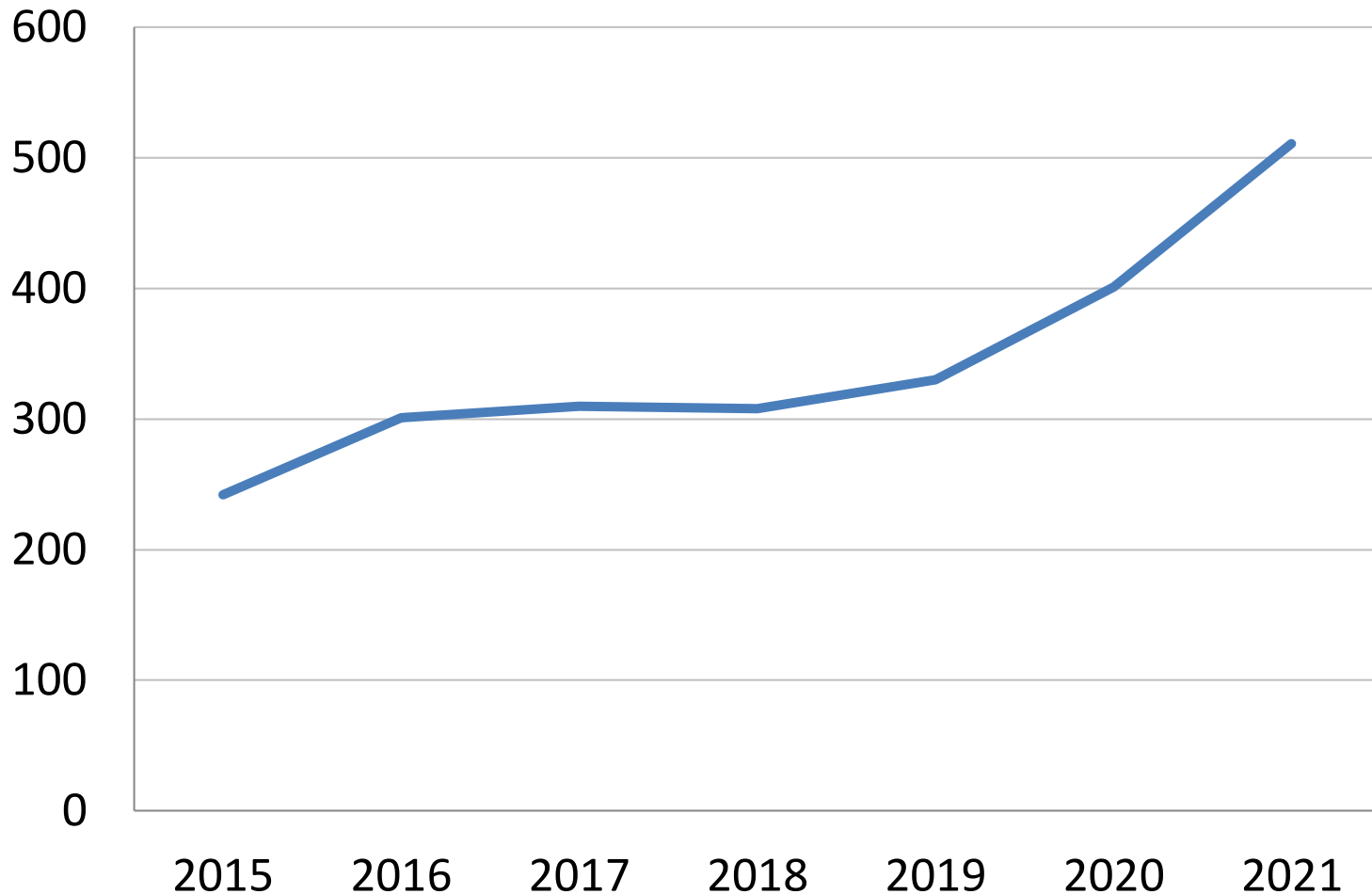
Harborview Hospital-Linked Violence Intervention Program and Community Partnership

Deepika Nehra, MD FACS
Assistant Professor of Surgery
Trauma/General Surgery, Surgical Critical Care
Harborview Medical Center
University of Washington



HARBORVIEW
INJURY PREVENTION
& RESEARCH CENTER

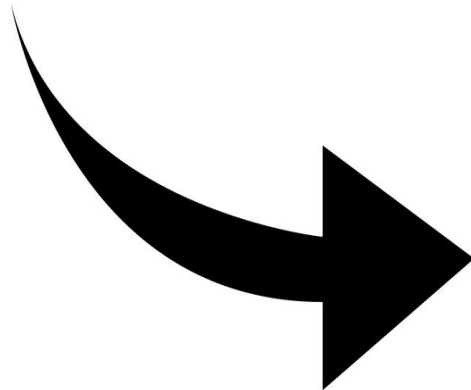
Harborview has felt the increase in gun violence we are seeing, especially over the last couple of years.



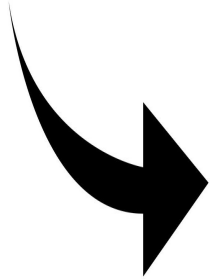
We need to **do better than just “treating and releasing”** survivors of gun violence . . .

there is **an opportunity to break the cycle** of violence and to change entire life trajectories which can impact entire families and communities.

Pilot Harborview Hospital-Linked Violence Intervention Program and Community Partnership



12-24 year olds
King County residents
Gun violence cared for at HMC
+ Younger siblings



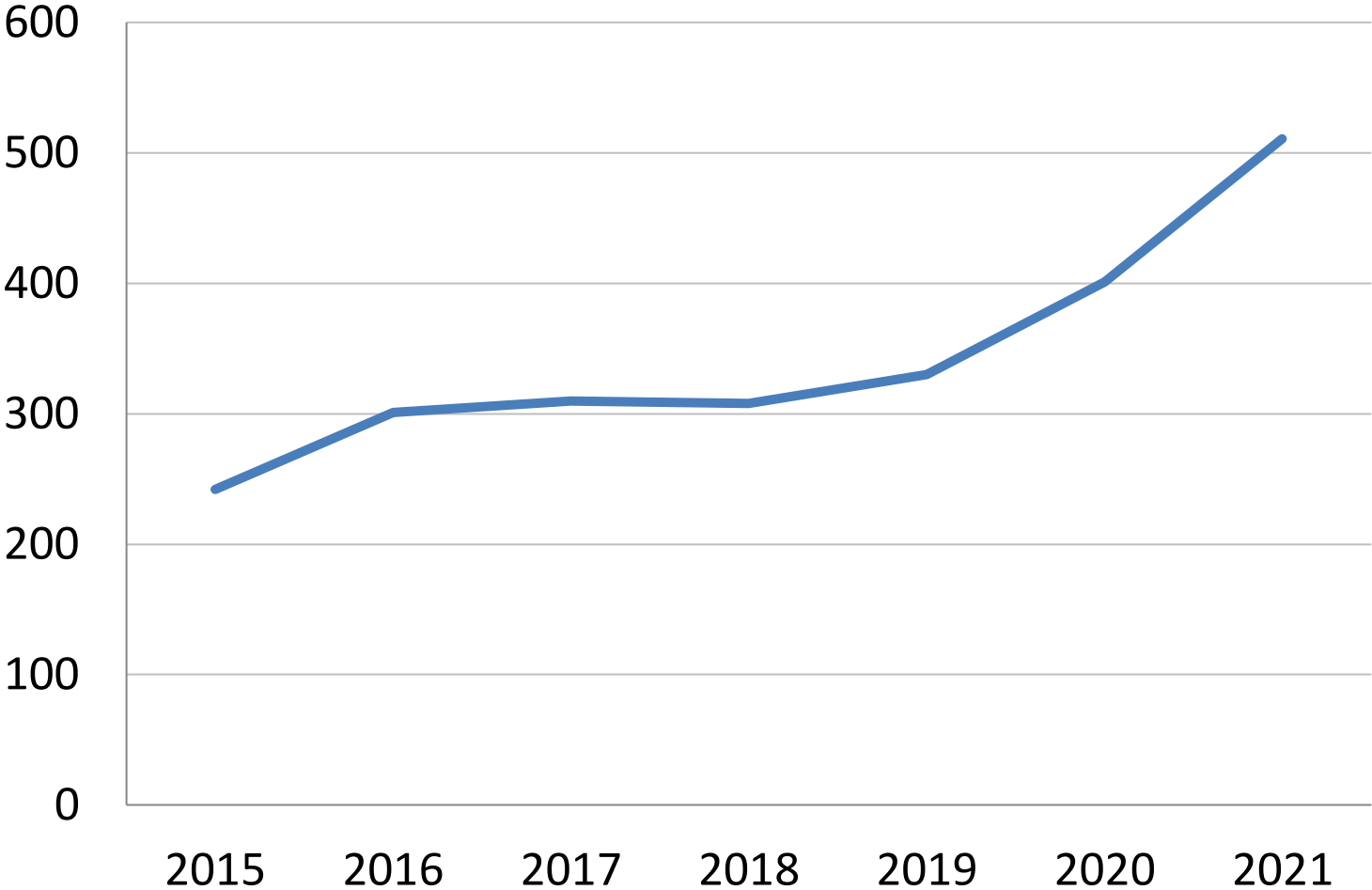
52 patients approached
35 referred for services



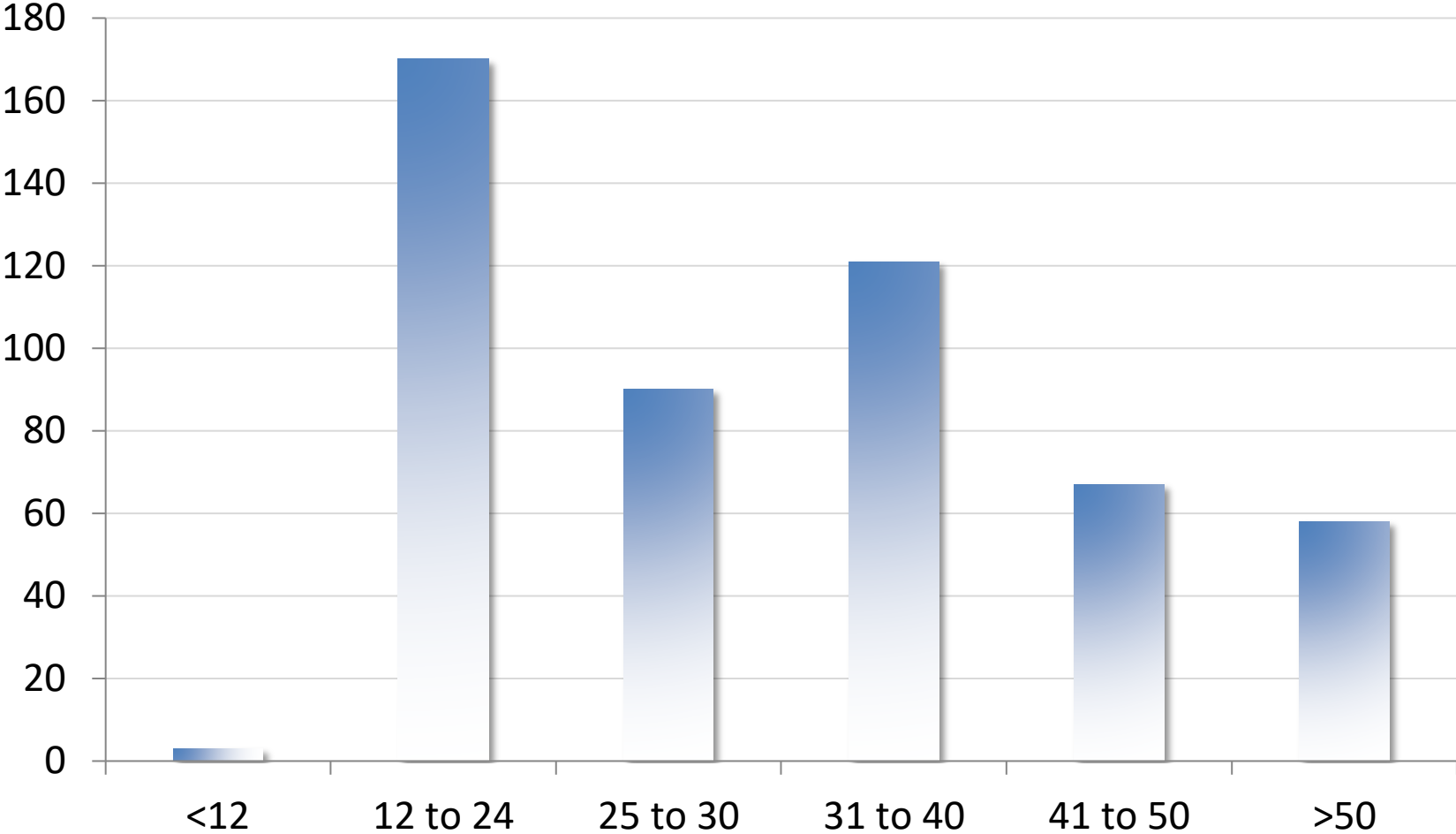
This program is a really **great collaborative start**
but,

there are a lot of ways in which
we need to expand and enhance.

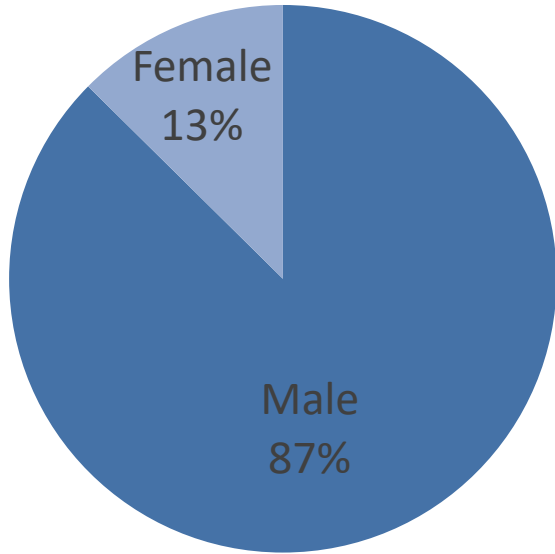
So let's take a deeper look at these individuals cared for at Harborview for injuries due to gun violence



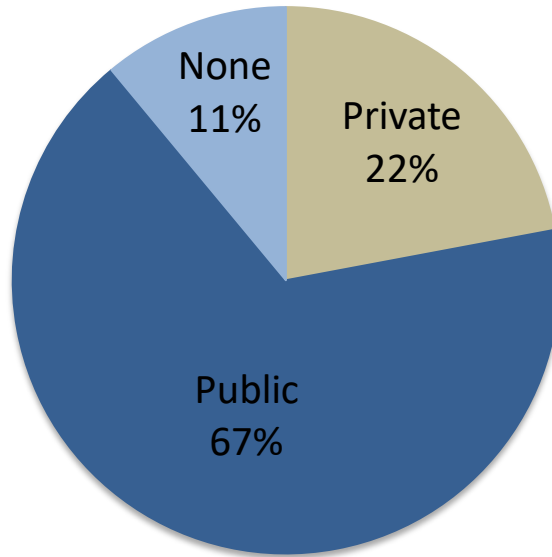
AGE



Sex



Insurance Status



Individuals of **color**
disproportionately
impacted

Expand the program . . .

Expand to older age groups (25-40 yo)

High-risk individuals from other counties

Mental health/substance abuse support

Multidisciplinary trauma clinic

Program evaluation

But what about the bigger picture . . .



+ Community
partnerships in other
high-risk counties
(Yakima, Pierce,
Spokane, etc)

