



# Crisis Care Centers Levy



*Creating a regional network of crisis care centers, preserving and increasing residential treatment beds, and investing in a robust behavioral health workforce.*

## Places to Go in a Crisis— Five New Crisis Care Centers Across the Region



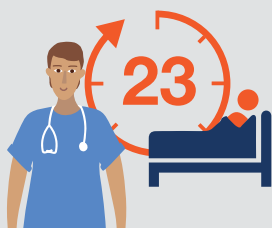
### What is a Crisis Care Center?

**A place for people to go in a behavioral health crisis for immediate treatment and care.** A regional network of five Crisis Care Centers will provide a nearby place that isn't the emergency room or jail where people in crisis can get same-day access to multiple types of behavioral health crisis stabilization services.

Right now, there is not a single walk-in behavioral health urgent care facility in King County. When people in crisis have no place to go for care, too many end up in jails or emergency rooms. Instead, a Crisis Care Center will provide a safe place in community specifically designed, equipped and staffed for behavioral health urgent care. These Centers will provide immediate mental health and substance use treatment and promote long-term recovery. First responders, mobile crisis teams, families, and people in crisis themselves need places that provide same-day, no-wrong-door crisis care.

### With the right care, people can and do get better. The five Crisis Care Centers will:

**Offer immediate on-site crisis support with 23-hour observation**



**Open 24 hours, seven days a week as a behavioral health urgent care clinic**



**Offer a multidisciplinary staff team, including peers with lived experience**



**Deliver on-site evaluation for involuntary treatment when necessary**



**Screen and triage treatment needs for people seeking care for themselves and for those referred by first responders, crisis response teams, and family members**



**Accept any person, with or without insurance**



**Provide a crisis stabilization bed for short-term behavioral health treatment for up to 14 days**

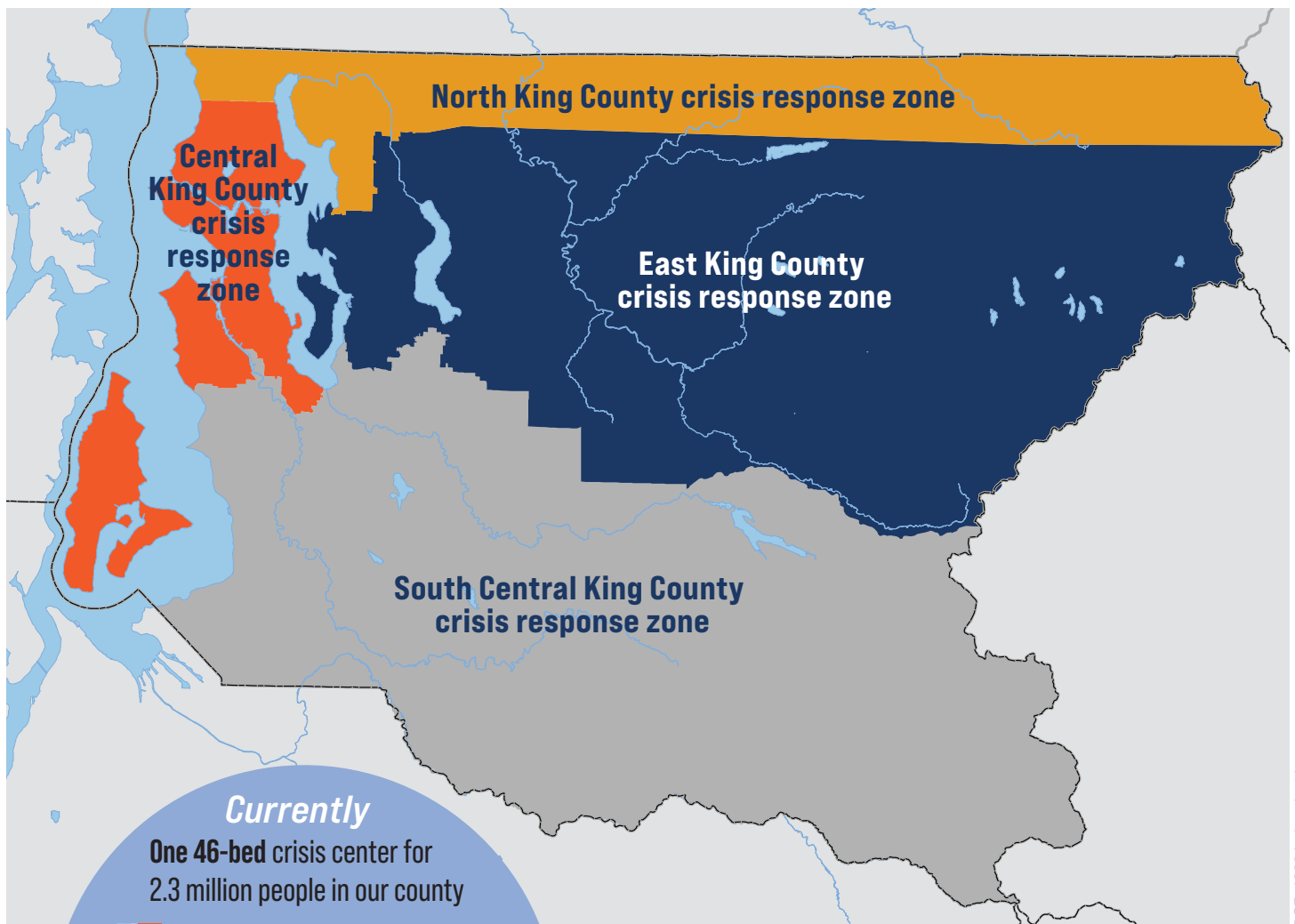


*The absence of walk-in, regionally distributed crisis care units leads to higher costs, unnecessary travel, long wait times, and delays to time-sensitive care.*

Without behavioral health urgent care, too often people must choose between no care or placement in jails or emergency rooms

## Geographic distribution of Crisis Care Centers

The five Crisis Care Centers will be distributed geographically across the county so that first responders, crisis response teams, families and individuals have a place nearby to turn to in a crisis. **One center will serve youth younger than age 19, and at least one will be established in each of these four subregional zones:**



DCE: 13064a-handout1