

Transformation is Possible:

Recommendations from
the Seattle Community
Responses to Domestic
Violence Workgroup

ACCOUNTABLE COMMUNITIES CONSORTIUM

Who We Are

- SURVIVORS, ADVOCATES, LOCAL LEADERS AND REPRESENTATIVES OF COMMUNITY-BASED AND CULTURALLY-SPECIFIC ORGANIZATIONS.
- INCLUDED PEOPLE WITH EXPERIENCE WORKING DIRECTLY WITH PEOPLE WHO HAVE CAUSED HARM OR ENGAGED IN PATTERNS OF ABUSIVE CONTROL.

Our Question:


WHAT COMMUNITY-BASED
SUPPORTS ARE AVAILABLE IN
THE SEATTLE METRO AREA FOR
PEOPLE WHO HAVE BEEN
ABUSIVE?

What We Learned

- Policymakers have generally favored funding community-based supports for survivors and criminal penalties for people who have been abusive
- For a person who is being abusive there are a very few non-criminalizing supports available to stop the abusive behavior and be accountable for the harm they have caused
- The City of Seattle does not currently fund non-criminal, community responses to DV that focus on reaching people who are being abusive in a romantic, intimate, or spousal relationship
- The need for framing of domestic violence as a pattern of power and control outside the criminal legal system definition

Framing the Issue

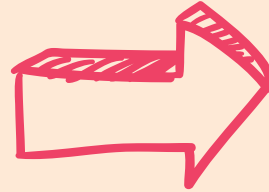
Someone who is using a pattern of power and control tries to turn a subject into an object

A large, abstract splash of red and orange watercolor paint is located on the left side of the slide, extending from the top left towards the center. The colors are vibrant and blend into each other, creating a textured, organic shape.

**Objectification and
dehumanization is the
core harm of
domestic violence**

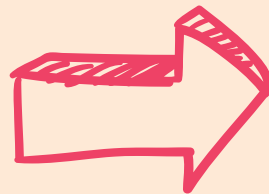
**The antidote to
objectification is
agency
(self-determination)**

For people experiencing a pattern of power, control & exploitation; "survivors"



Self-determination & Safety*

For people establishing a pattern of power, control & exploitation; "People who are abusive"



Accountability

*the order is important

COMMUNITY-BASED MODEL

**A person who
experiences a pattern
of power and control**

**A person who
establishes a pattern
of power and control**

Survivor

**A Person Who
Is Abusive**

In a Community-Based Model People Who Abuse their Partners:



**Establish a pattern of
control that occurs
24/7**



**Controls their
partner over
time**



**Use a number of tactics-
some of which are illegal,
most of which are legal**



**Rely on systems of
oppression and social
inequities to maintain their
control over their partner**

Criminal Legal Language

Victim

**A PERSON AGAINST
WHOM A CRIME HAS
BEEN COMMITTED**

Perpetrator

**A PERSON WHO
HAS BEEN ACCUSED
OR CONVICTED OF
A CRIME**

Criminal Legal System



Designed to address specific incidents & determine if they are illegal



Evaluates "moments in time," not patterns of power and control



Ignores bias and posits everyone as agents under the law-regardless of institutional inequities

COMMUNITY-BASED MODEL

A person who experiences a pattern of power and control

Survivor

A person who establishes a pattern of power and control

A Person Who Is Abusive

- Establish a pattern of control that occurs 24/7
- Controls their partner over time
- Use a number of tactics-some of which are illegal, most of which are legal
- Rely on systems of oppression and social inequities to maintain their control over their partner

Criminal Legal Language

Victim

A PERSON AGAINST WHOM A CRIME HAS BEEN COMMITTED

Perpetrator

A PERSON WHO HAS BEEN ACCUSED OR CONVICTED OF A CRIME

- Designed to address specific incidents & determine if they are illegal
- Evaluates "moments in time," not patterns of power and control
- Ignores bias and posits everyone as agents under the law-regardless of institutional inequities.

Recommendations for City of Seattle Part 1

- Establish durable public funding streams for community responses that reach people being abusive and are independent from the criminal legal system.
- Invest first in strategies developed by marginalized survivors of domestic violence and practiced in Black and Indigenous communities and other communities of color; lesbian, gay, bisexual, transgender, and queer communities; immigrant and refugee communities; and other communities who have been systematically harmed by the criminal legal system.

Recommendations for City of Seattle Part 2

- Start with a pilot phase including a community-directed funding process with sufficient funding for community organizations to plan, design, implement, and evaluate programs over a three year period.
- Protect community-ownership of programs including independent leadership and decision-making, reporting requirements that reflect community-driven evaluation criteria, and participant confidentiality.
- Demonstrate public leadership and transparency in the adoption of community responses to domestic violence.



Community Leadership

QUESTIONS

?

?

?

?

?

?

?

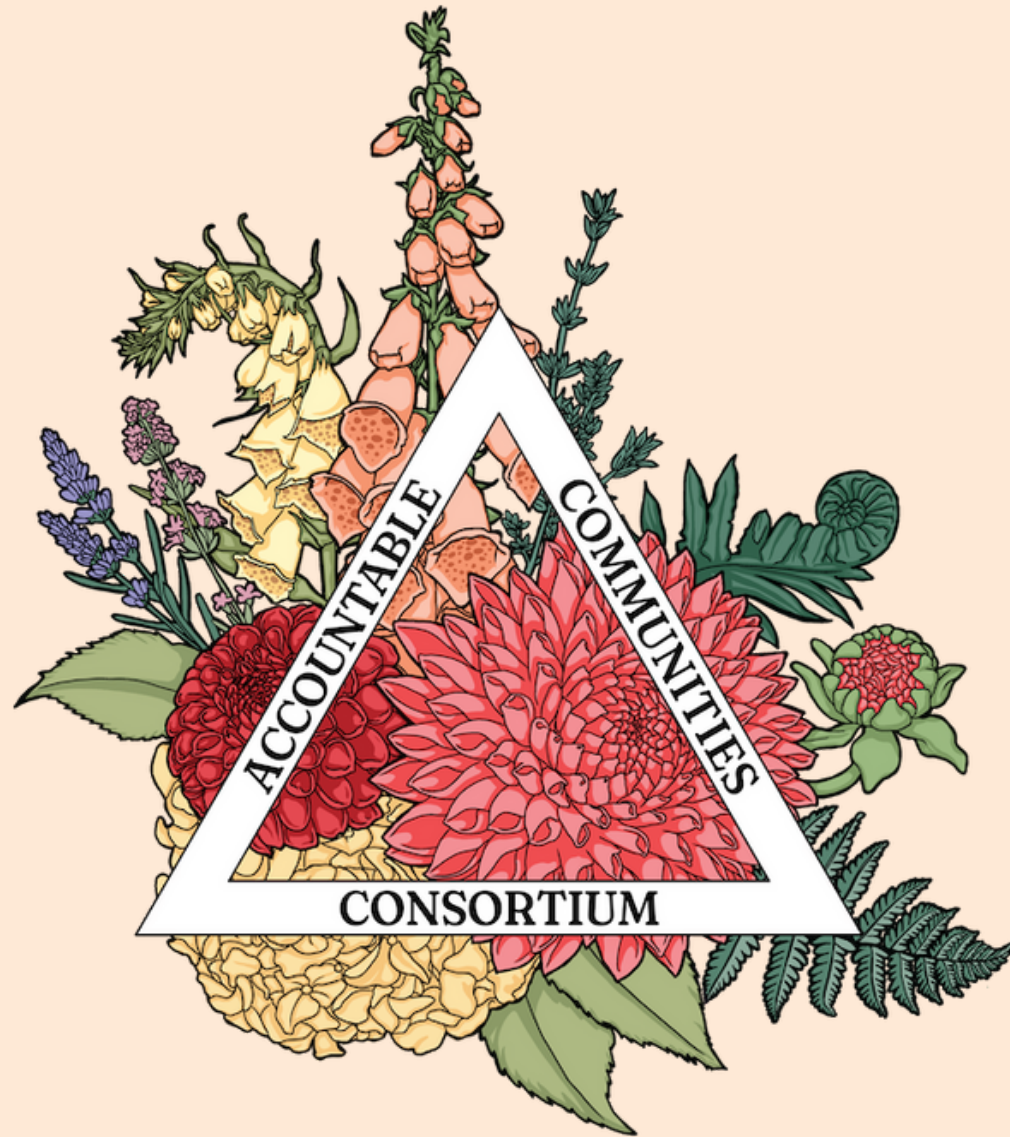
?

?

?

?

Thank you!



www.accountablecommunities.com