



# Levy to Move Seattle

Seattle City Council – Transportation Committee

February 2024

Francisca Stefan, SDOT

The Levy to

**MOVE SEATTLE**





# Outline

- **Levies as part of Transportation Budget**
- **Levy to Move Seattle**
  - Background
  - Achievements
  - Program status
  - Financial summary
  - Levy Oversight Committee
- **Reports and resources**



# Levies as Part of Seattle's Transportation Budget

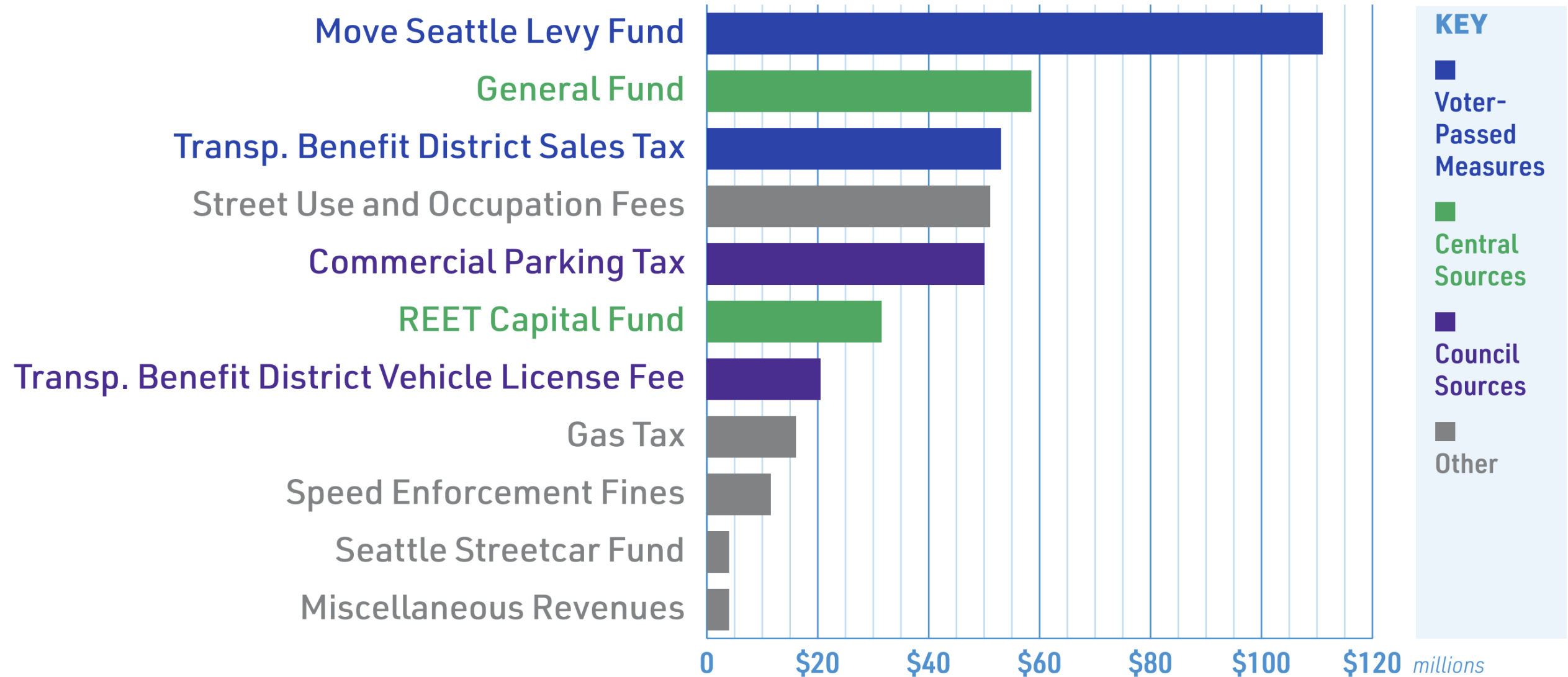


# Summary: Seattle's Transportation Levies

- **2006 Bridging the Gap Levy** was first real source of funding dedicated to maintaining our system while also funding new investments in sidewalks, bike facilities, transit reliability and access, along with funding to leverage federal grants necessary to design and construct major projects
- **2015's Levy to Move Seattle** doubled-down on maintenance and grew walk, transit, bike network to accommodate Seattle's fastest in the nation growth in jobs and population
- Levy to Move Seattle expires at end of year, funding ~30% of SDOT's maintenance, operations, and capital project budgets
- Mayor Harrell expects to send a proposal for a replacement levy to Council by late April/early May



# 2024 SDOT Budget by funding source



# Levy to Move Seattle





# Levy to Move Seattle Background

- Approved by 58% of voters in 2015; replaced "Bridging the Gap" levy
- 9-year property tax collection (2016-24)
- \$930M collection ceiling
- Funds about 30% of SDOT's capital, operations, and maintenance work
- Enabling legislation outlined 30 programs with specific deliverables, which SDOT has met through Levy, local, and leverage funding
- Overseen by Levy Oversight Committee, composed of 16 members (including 5 appointed by the Mayor and 5 by Council)

The Levy to

# MOVE SEATTLE



**Your tax dollars at work**

# Levy to Move Seattle Programs

## SAFE ROUTES

1. Safety Corridors
2. Safe Routes to School
3. Markings
4. Transportation Operations
5. Bicycle Safety
6. Sidewalk Safety Repair
7. Curb Ramps & Crossings
8. Neighborhood Street Fund



## MAINTENANCE & REPAIR

9. Arterial Roadway Maintenance
10. Paving Spot Improvements
11. Bridge Spot Repairs
12. Bridge Seismic
13. Fairview Bridge
14. Bridge Replacement, Planning & Design
15. Stairway Maintenance
16. Urban Forestry: Tree Trimming and Planting
17. Drainage Partnership, SPU South Park



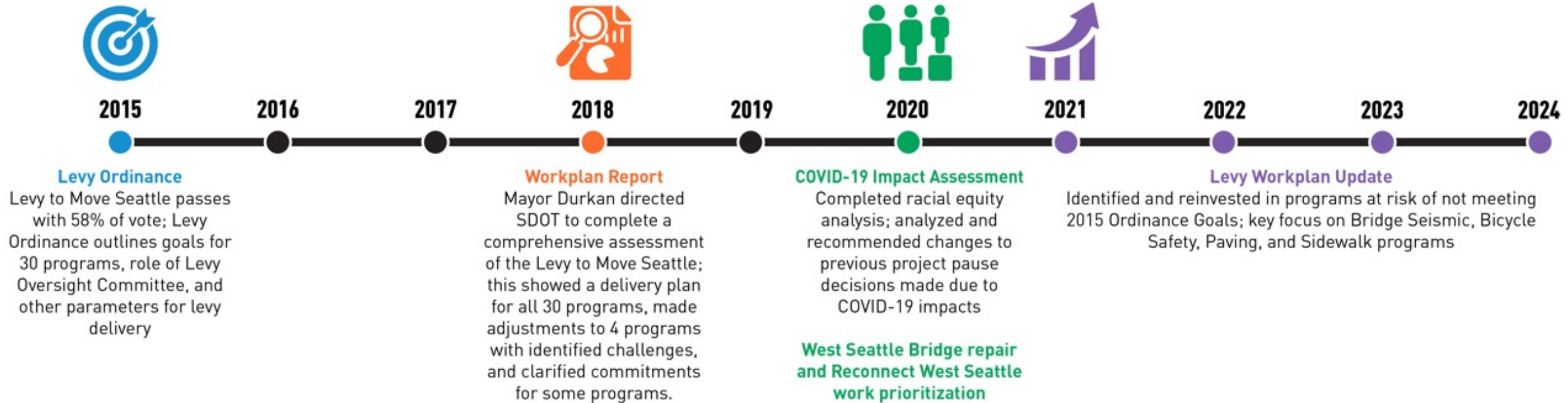
## CONGESTION RELIEF

18. Multimodal Improvements
19. Traffic Signal Timing Improvements
20. Intelligent Transportation System Improvements
21. Transit Spot Improvements
22. Light Rail Connections, Graham St
23. Northgate Bridge
24. Accessible Mt Baker
25. New Sidewalks and Crossing Improvements
26. SPU Partnership, Broadview
27. Bike Parking & Bike Spot Improvements
28. Partnership Improvements, Lander Overpass
29. Heavy Haul Network, East Marginal Way
30. Freight Spot Improvements





# Key Moments in Life of Levy



# Levy to Move Seattle Achievements Citywide 2016-2023



**25**

Major corridors improved with elements such as new crosswalks and crossing signals, new sidewalks, and improved ADA-accessible curb ramps



**130**

New painted crosswalks



**226**

Blocks of new sidewalks to connect to community spaces, transit, and more



**197**

Safe Routes to School projects to make it safer to walk, bike, and roll to school



**1,644**

New bike parking spots



**67**

Miles added to our citywide bicycle network, with more to come, for a total of 90-107 miles added to the network



**3**

New bridges for people walking, rolling, and biking



**45**

Stairways repaired and rehabilitated to connect Seattle neighborhoods



**7**

Transit-Plus Multimodal Corridor projects completed or planned to support connectivity and safety to and from transit for all travelers



**225**

Lane-miles repaved



**25**

Community-requested projects completed, with 9 more planned



**293**

Transit spot improvements



**85**

Spot improvements for bicycle safety



**1,500**

Crosswalks repainted annually to improve visibility of people crossing the street



# Building a transit-rich city

- ✓ 7 transit plus multimodal corridors in progress or completed, including 3 RapidRide projects
- ✓ 293 transit spot improvements
- ✓ New connections to transit for people walking, rolling, and biking





# Moving goods reliably

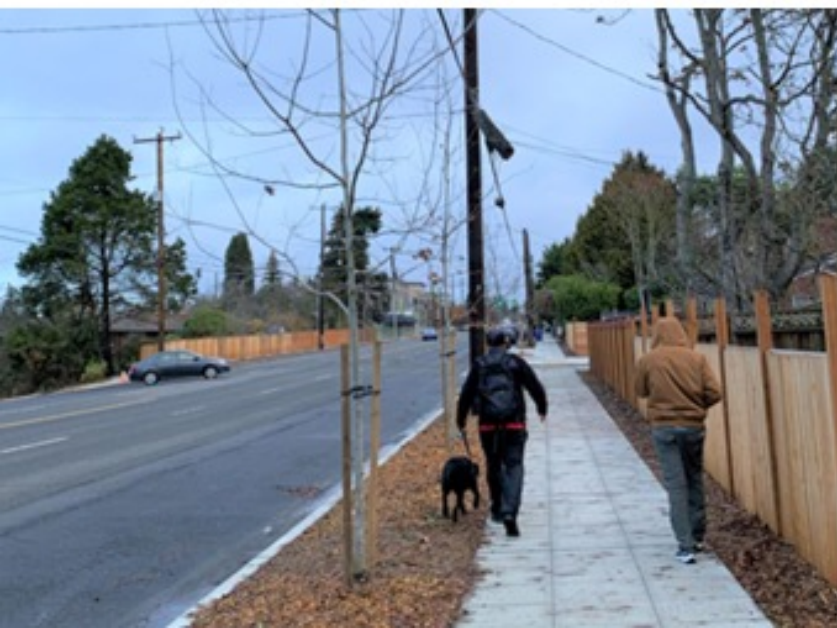
- ✓ Lander St Overpass
- ✓ East Marginal Way Corridor Project
- ✓ 44 spot improvements for freight mobility





# Supporting safe and sustainable transportation options

- ✓ 67+ miles added to the bicycle network
- ✓ Fairview Ave E Bridge replacement
- ✓ 226 blocks of new sidewalks
- ✓ 85 bike spot improvements
- ✓ 223 blocks of sidewalk repaired
- ✓ 25 Safety Corridor projects





# Connecting people to places and opportunities

- ✓ 25 community-requested projects
- ✓ John Lewis Memorial Bridge
- ✓ 193 Safe Routes to School Projects
- ✓ 45 rehabilitated/repared stairways
- ✓ John Lewis Memorial Bridge
- ✓ 193 Safe Routes to School Projects





# Investing in our assets

- ✓ Over 3,100 bridge spot repairs
- ✓ 216 lane-miles of repaved roads
- ✓ 16 bridge seismic reinforcements planned (4 completed)



# Impact on community

**15<sup>th</sup> Ave S:** "My family and I live a block away at 14th Ave S and S Oregon and use this intersection almost daily, primarily as pedestrians and bicyclists to get to MacPhersons' and to Jefferson Park. My son is a student at Mercer Middle School and walked to school daily when it was in session. My fiancé rides her bike daily to her business down in Columbia City. Having the intersections pedestrian and bicycling features improved will be a major upgrade for our daily life."

**23<sup>rd</sup> Ave E:** "The thing that has been so significant for our community is the realization of the pedestrian light at Lynn and 23rd. It's an intersection cars like to zoom through, and it's very hard to get people to stop long enough to cross safely. I personally am grateful for the safety I feel being able to use the ped light. I see kids using it to get to Montlake Elementary School. The safety it provides us contributes to the feeling of community along 23rd Avenue E."

**South Park sidewalks:** "I have lived and operated a small childcare on the corner of 8th Ave S and S Southern St for many years. The old sidewalks were in such bad shape that the preschool children and I would avoid using them because they often had standing water and the bumps and cracks made it difficult to push the stroller. Our new sidewalks are flat, dry & beautiful! Our little preschool group loved watching the construction. The cement trucks were definitely crowd pleasers. AND the beautiful new corner art is like the icing on the cake. Now everyone can see, what we in the neighborhood already knew, South Park is a very special and beautiful place."

**15<sup>th</sup> Ave NE:** "I wanted to reach out and say that I'm grateful for this project! I live in the area and am significantly impacted by the construction but in the end, it will all be worth it. The bike lanes are something that my family and I will use regularly. We also walk and drive in the area on a daily basis so are looking forward to a safer street overall, for all users. And in 4 short years my daughter will attend high school at Roosevelt and I will feel so confident in her ability to bike and walk to school."



# Levy to Move Seattle Programs - Expected Status

As of end of Levy (Levy spending could extend past 2024)

Pending adoption of future annual and supplemental budgets, administrative transfers, and future legislation.

<b>1</b> Safety Corridors	<b>2</b> Safe Routes to School	<b>3</b> Markings	<b>4</b> Transportation Operations	<b>5</b> Bicycle Safety
<b>6</b> Sidewalk Safety Repair	<b>7</b> Curb Ramps and Crossings	<b>8</b> Neighborhood Street Fund	<b>9</b> Arterial Roadway Maintenance	<b>10</b> Paving Spot Improvements
<b>11</b> Bridge Repair Backlog	<b>12</b> Bridge Seismic Improvements	<b>13</b> Fairview Bridge	<b>14</b> Bridge Replacement, Planning and Design	<b>15</b> Stairway Maintenance
<b>16</b> Tree Planting and Trimming	<b>17</b> SPU Drainage Partnership, South Park	<b>18</b> Multimodal Improvements (9 of 11 projects meeting goals)	<b>19</b> Traffic Signal Timing Improvements	<b>20</b> ITS Improvements
<b>21</b> Transit Spot Improvements	<b>22</b> Light Rail Connections, Graham St	<b>23</b> Northgate Bridge	<b>24</b> Light Rail Connections, Mt Baker	<b>25</b> New Sidewalks
<b>26</b> SPU Broadview	<b>27</b> Bike Parking and Spot Improvements	<b>28</b> Lander St Bridge	<b>29</b> East Marginal Way	<b>30</b> Freight Spot Improvements

- Meeting or exceeding 2015 Goals & 2018 Workplan Target
- Exceeding 2018 Workplan Target and taking action to get closer to 2015 Goals
- Not meeting 2015 Goals or 2018 Workplan Target due to project schedule changes

# Levy to Move Seattle Programs - Expected Status

As of end of Levy (Levy spending could extend past 2024)

Pending adoption of future annual and supplemental budgets, administrative transfers, and future legislation.

1 Safety Corridors	2 Safe Routes to School	3 Markings	4 Transportation Operations	5 Bicycle Safety
6 Sidewalk Safety Repair	7 Curb Ramps and Crossings	8 Neighborhood Street Fund	9 Arterial Roadway Maintenance	10 Paving Spot Improvements
11 Bridge Repair Backlog	12 Bridge Seismic Improvements	13 Fairview Bridge	14 Bridge Replacement, Planning and Design	15 Stairway Maintenance
16 Tree Planting and Trimming	17 SPU Drainage Partnership, South Park	18 Multimodal Improvements (9 of 11 projects meeting goals)	19 Traffic Signal Timing Improvements	20 ITS Improvements
21 Transit Spot Improvements	22 Light Rail Connections, Graham St	23 Northgate Bridge	24 Light Rail Connections, Mt Baker	25 New Sidewalk
26 SPU Broadview	27 Bike Parking and Spot Improvements	28 Lander St Bridge	29 East Marginal Way	30 Freight Spot Improvements

**Bicycle Safety**  
On track to build 90 -107 miles of bicycle facilities instead of the 2015 goal of 110.

**Multimodal Improvements**

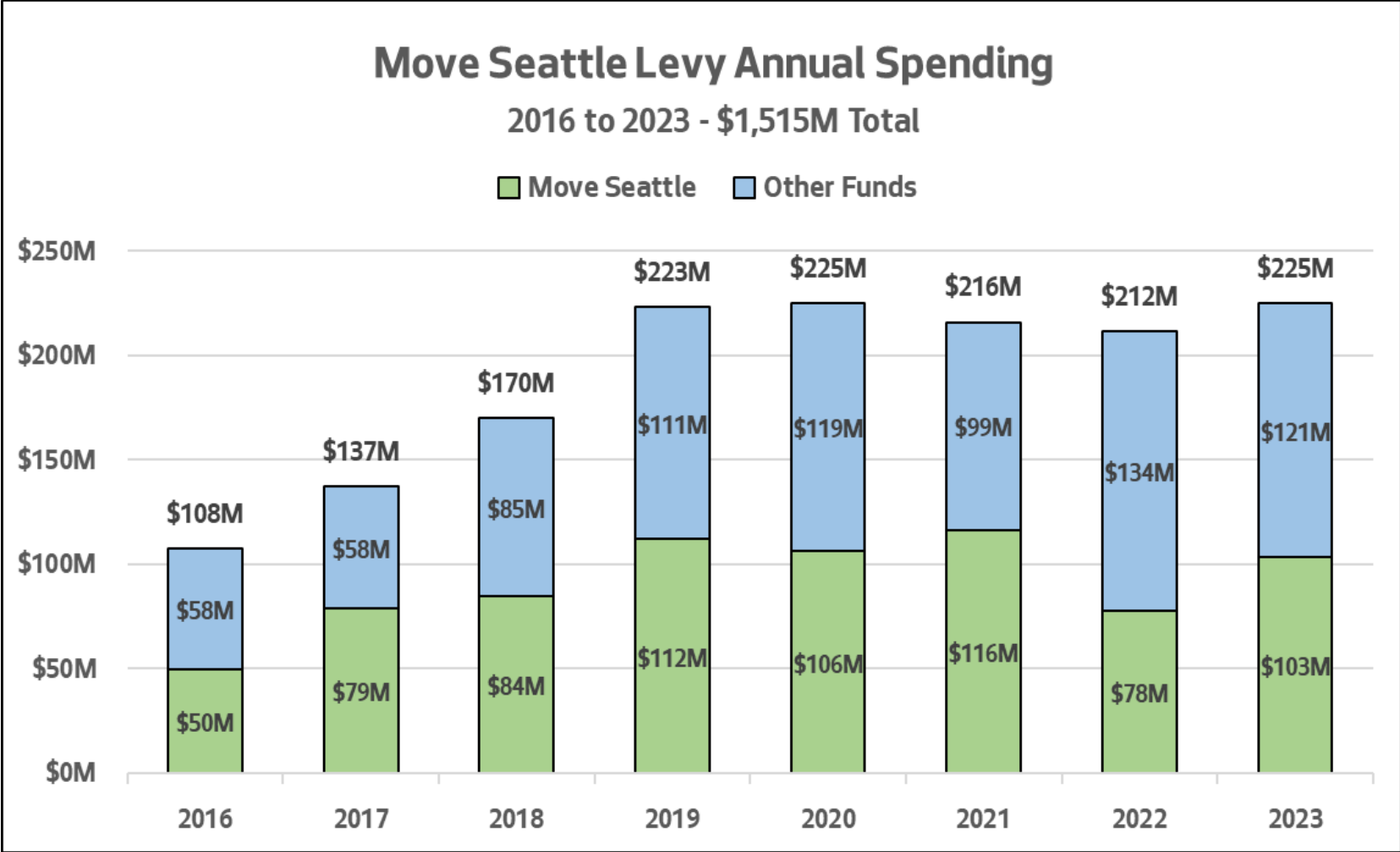
- ✓ **On track** to complete 7 transit plus multimodal corridors: Delridge RapidRide H, Madison RapidRide G, Roosevelt RapidRide J, and Routes 7, 40, 44, and 48
- ✓ **On track/complete:** Crossing on NE 45<sup>th</sup>, Aurora Planning Study
- **Delayed:** Burke Gilman Trail due to ongoing litigation
- **Paused:** Fauntleroy Blvd SW due to Sound Transit 3 planning

**Light Rail Connections, Graham St**  
**Delayed** due Sound Transit 3 planned station work for 2031.

- Meeting or exceeding 2015 Goals & 2018 Workplan Target
- Exceeding 2018 Workplan Target and taking action to get closer to 2015 Goals
- Not meeting 2015 Goals or 2018 Workplan Target due to project schedule changes



# Levy to Move Seattle Financial Summary

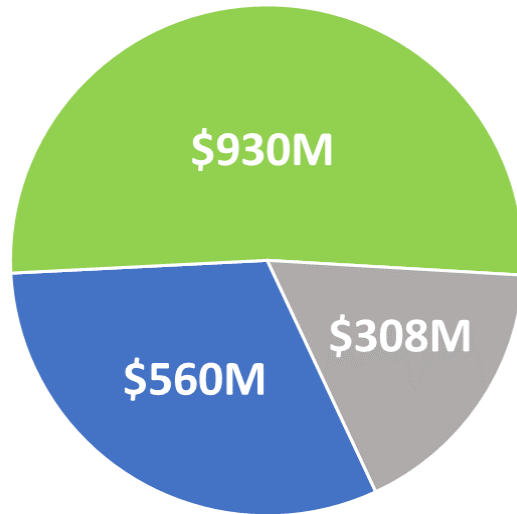


Since inception through 2023, \$728M of Levy funding has been spent

# Levy to Move Seattle Portfolio funding

Levy, local, and leverage funding

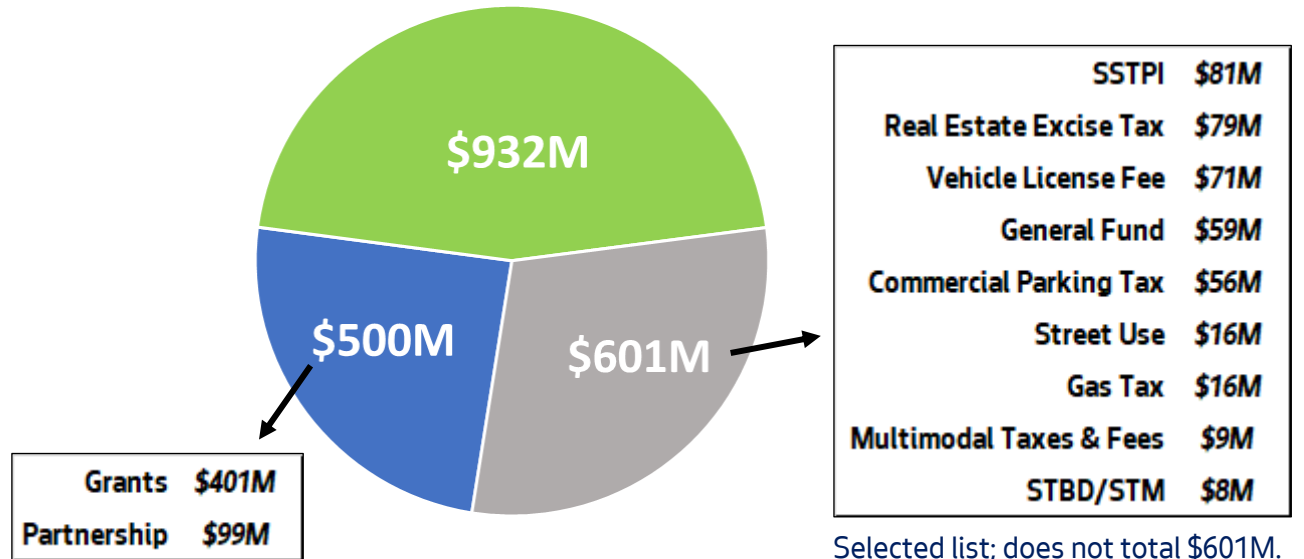
2015 Projection - \$1.8 Billion



■ Leverage (31%) ■ Levy (52%) ■ Local (17%)

Initial projection had an internal Leverage goal of \$400M in grants and \$160M in partnership funds.

Current Projection - \$2.0 Billion  
~\$220 million increase



Selected list; does not total \$601M.

■ Leverage (25%) ■ Levy (45%) ■ Local (30%)

Partnership funding was less than expected primarily due to King County scaling back plans on RapidRide deployment.

# More to come in 2024

- Breaking ground on the RapidRide J Line, Georgetown to Downtown Safety, and East Marginal Way Corridor Projects
- Beginning construction on 12 bridge seismic reinforcement projects
- Installing 10 community requested projects
- Safety corridor projects including installing leading pedestrian intervals and no turn on red signs; traffic calming on 10+ different arterials; improvements on Aurora Ave N, and more
- Adding up to 20+ miles of new Neighborhood Greenways
- Thousands of sidewalk repairs and hundreds of repairs to our city's bridges

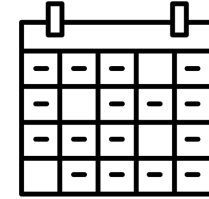
# Levy Oversight Committee role



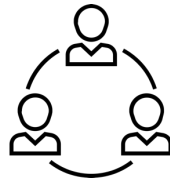
Monitors revenues, expenditures, and program and project implementation



May make recommendations to the Mayor and City Council regarding the spending of Levy Proceeds



Meets on the first Tuesday of each month in a hybrid setting, generally skipping January and July, to receive presentations on relevant topics from SDOT



Advises the City Council, the Mayor, and SDOT on responding to program and project cost savings or overruns



Annually reviews SDOT's program and project priorities, spending, and revised financial plans



# Links to Levy to Move Seattle reports and resources

- [2015 Levy Ordinance](#)
- [Annual and quarterly reports](#)
  - [2022 Annual Report](#) (2023 Annual report to be published in late March)
  - [Q3 2023 Report](#)
- [Levy Oversight Committee meeting materials and minutes](#)
- [Levy performance dashboard](#)

# Questions and Discussion





An aerial photograph of a large bridge spanning a wide waterway, likely a river or harbor. The bridge has a prominent arch structure and is supported by several concrete piers. In the background, a city with numerous buildings and houses is visible on a hillside. The water is dark blue, and there are several boats and structures in the harbor area. The entire image is overlaid with a semi-transparent blue filter.

# Thank you