

TRANSPORTATION LEVY TO MOVE SEATTLE



Seattle City Council
Scott Kubly, SDOT Director
May 12, 2015

Presentation

- Bridging the Gap
- Growing needs
- Community engagement
- Levy proposal
- Accountability
- Next steps



Our mission, vision, and core values

Mission: deliver a high-quality transportation system for Seattle

Vision: connected people, places, and products

Committed to **5 core values** to create a city that is:

- Safe
- Interconnected
- Affordable
- Vibrant
- Innovative

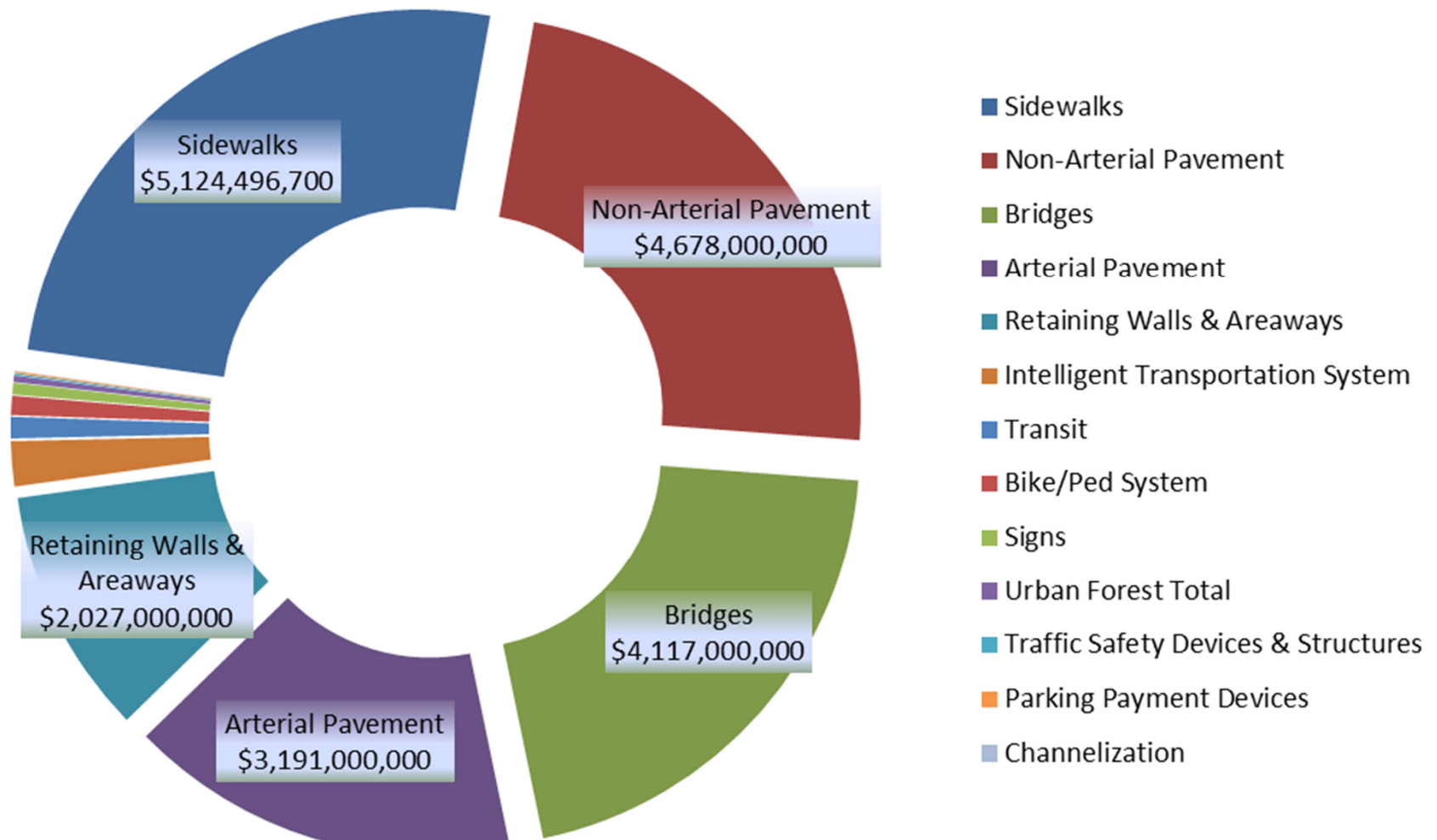
Yesterday, today, and tomorrow

Current levy – Bridging the Gap

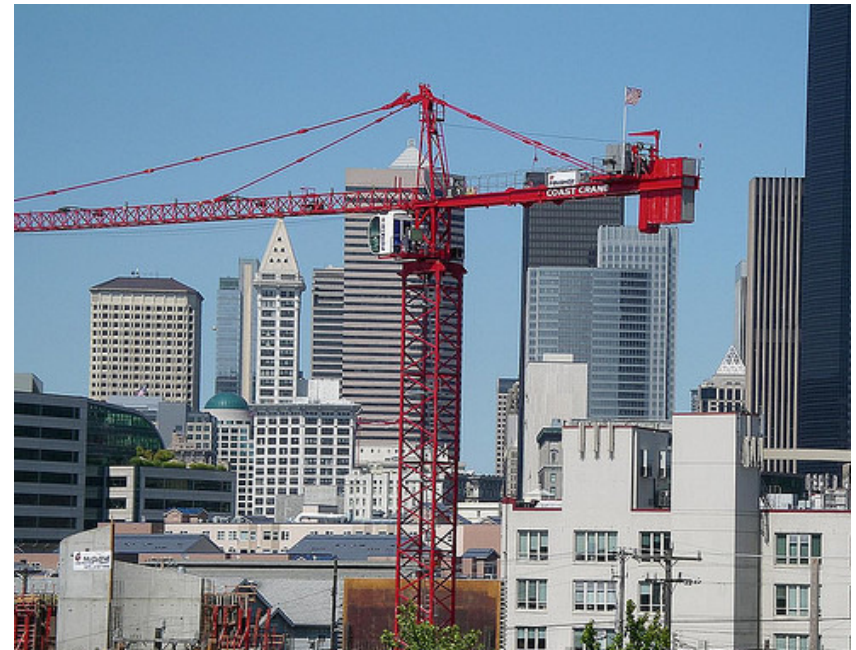
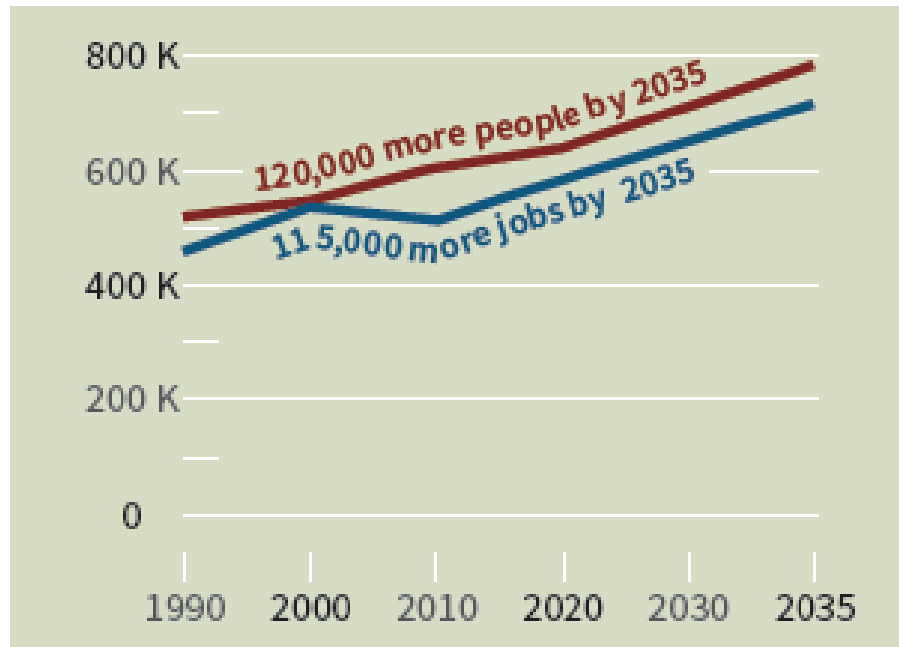


9-year,
\$365
million levy
expires in
2015

Current levy - asset management



Growing needs in a growing Seattle



Funding sources are not keeping up

Local News | Puget Sound | Transportation

As gasoline use drops, so does state revenue

Originally published December 27, 2010 at 8:15 pm | Updated December 27, 2010 at 10:16 pm

The trend toward lower gasoline consumption is like a flashing yellow light in the new 20-year plan from the Washington Transportation Commission.

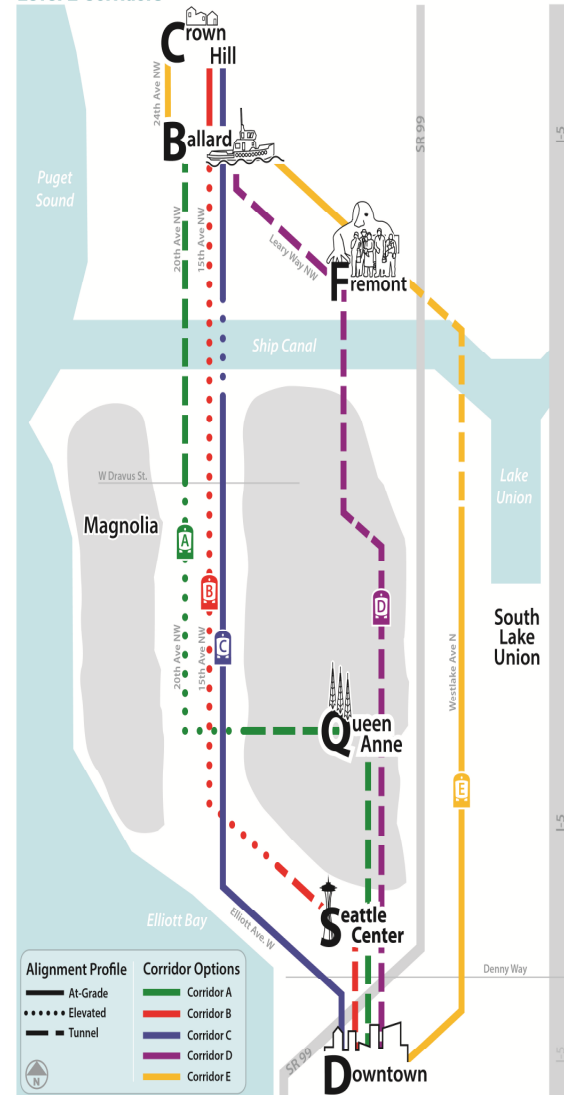
- Bridging the Gap
- Initiative 747
- Gas tax
- Impact fees
- Employee head tax
- Commercial parking tax

Regional and State investment

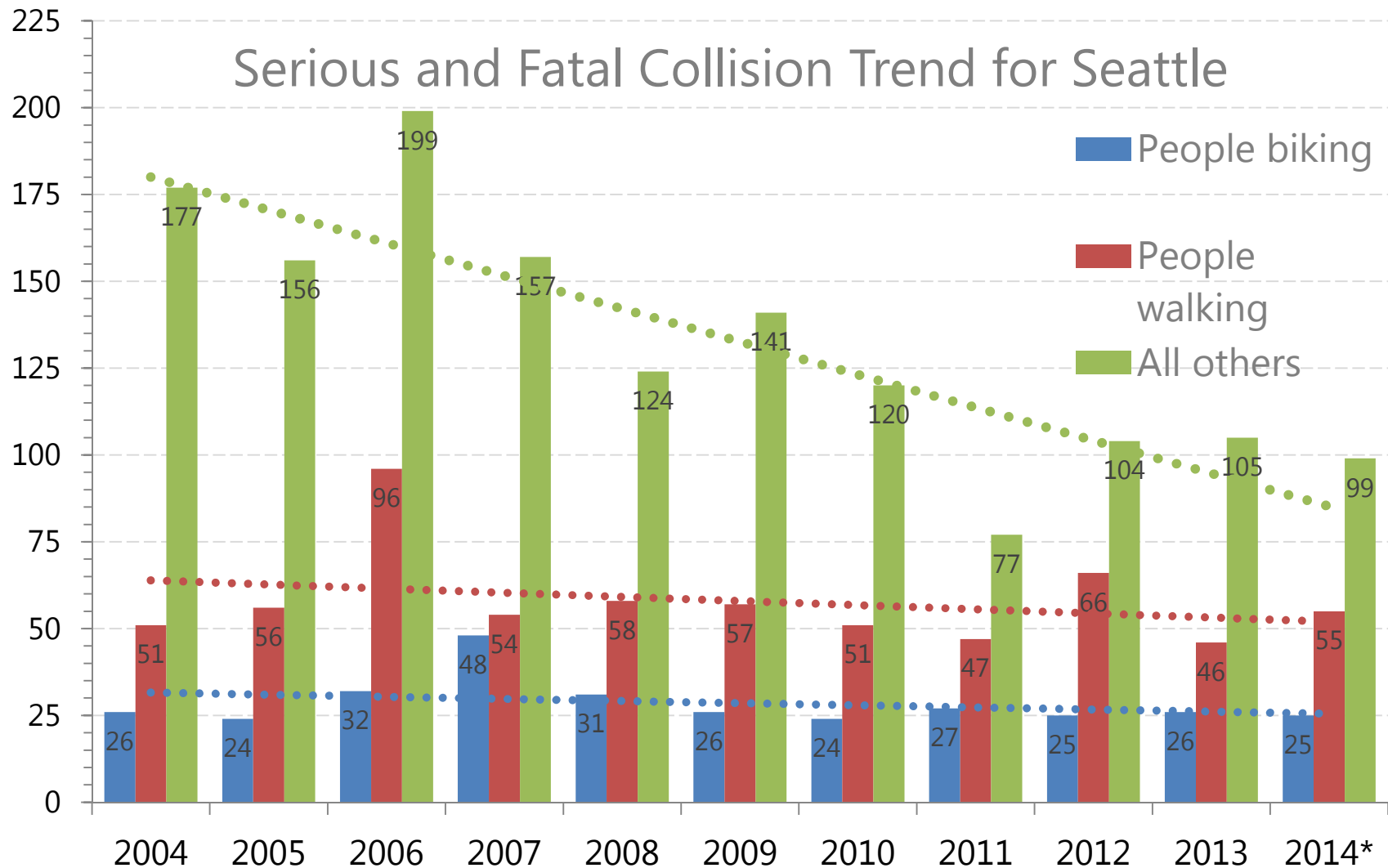
- 2014
Seattle Transit Benefit District Proposition 1
- 2015
Washington State Transportation Bill
- 2016
Sound Transit 3

Ballard to Downtown Seattle Transit Expansion Study

Level 2 Corridors



A growing Seattle needs to be safe

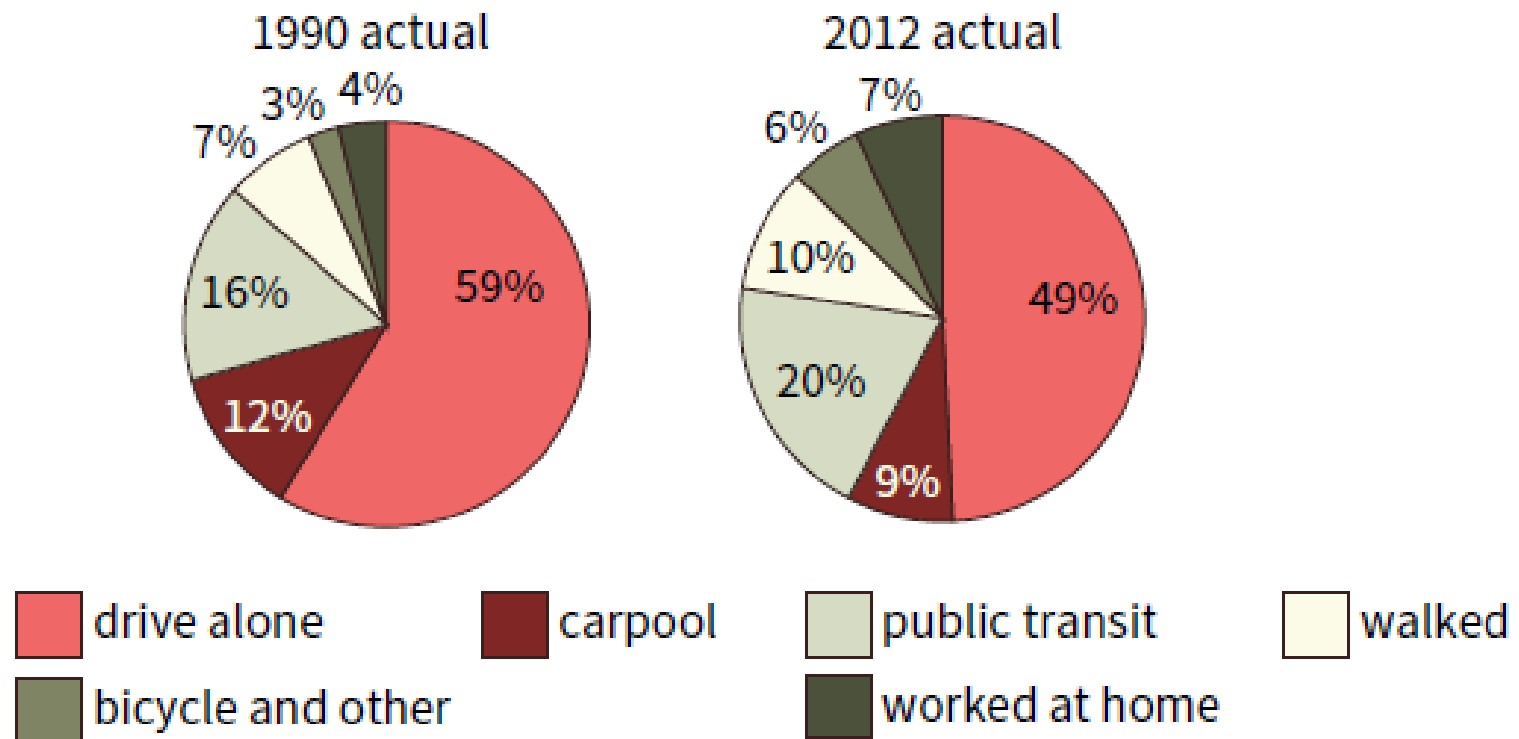


A growing
Seattle needs
to be safe

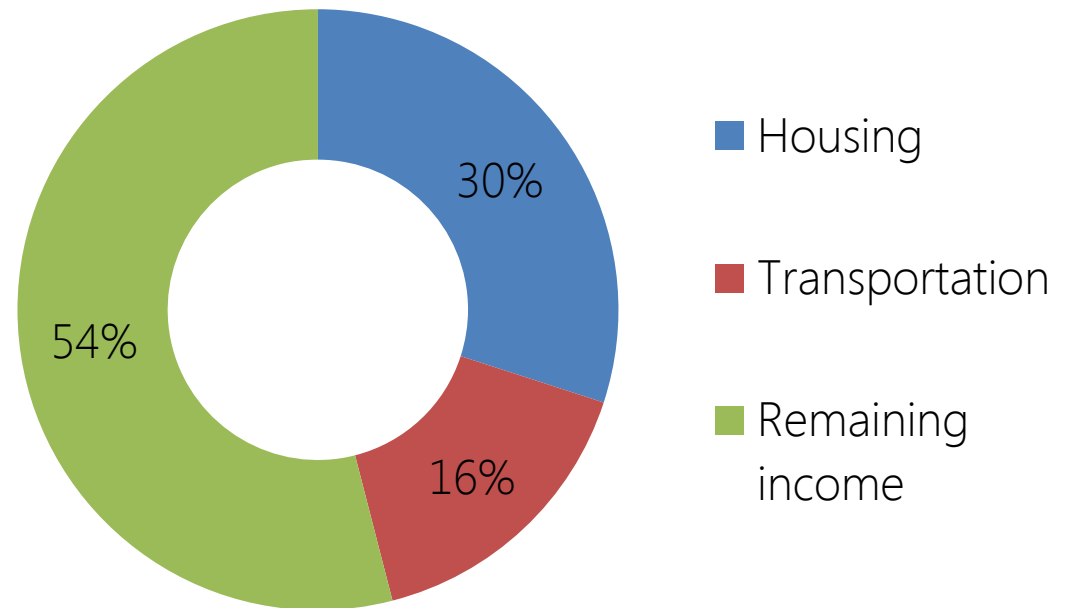


A growing Seattle needs to be interconnected

how Seattle residents commute to work



A growing Seattle needs to be affordable



A growing Seattle needs to be vibrant



Initial levy proposal

9-year funding breakdown

Safe City: \$350 M

Affordable City: \$275 M

Interconnected City: \$170 M

Vibrant City: \$105 M

9-year total \$900 M

Annual cost to
median home \$275



Outreach objectives

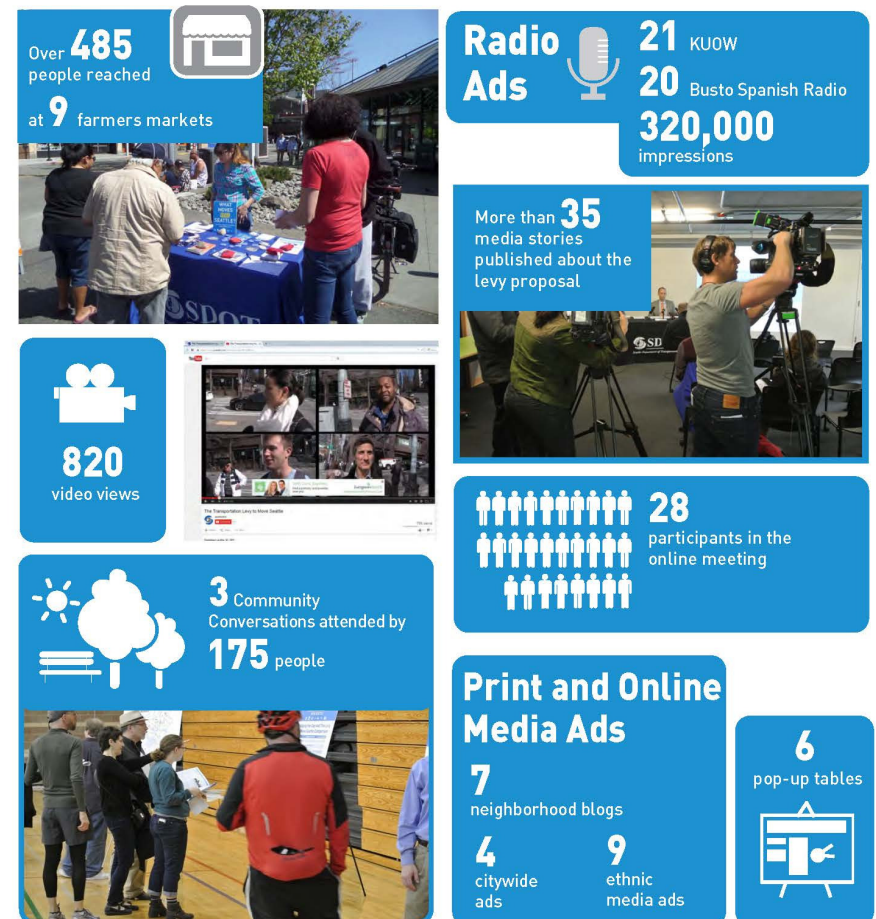
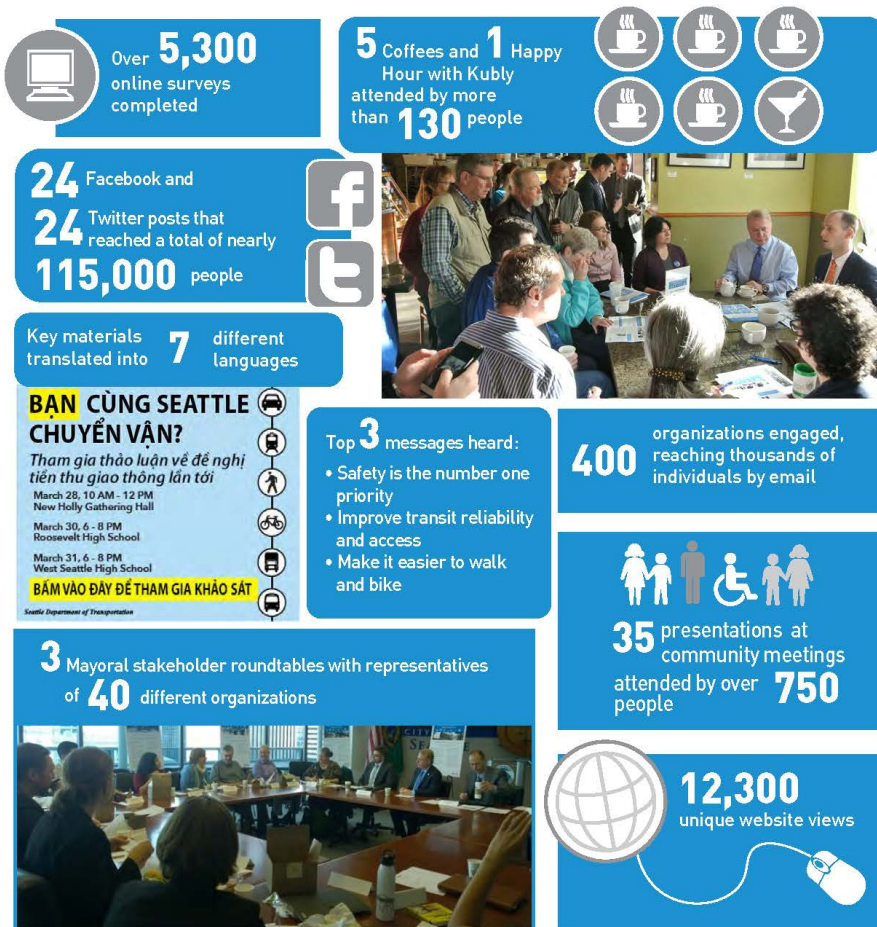
- Build public understanding of draft proposal and engagement process
- Gain better understanding of community needs
- Produce a final funding proposal that reflects community priorities



Outreach methods

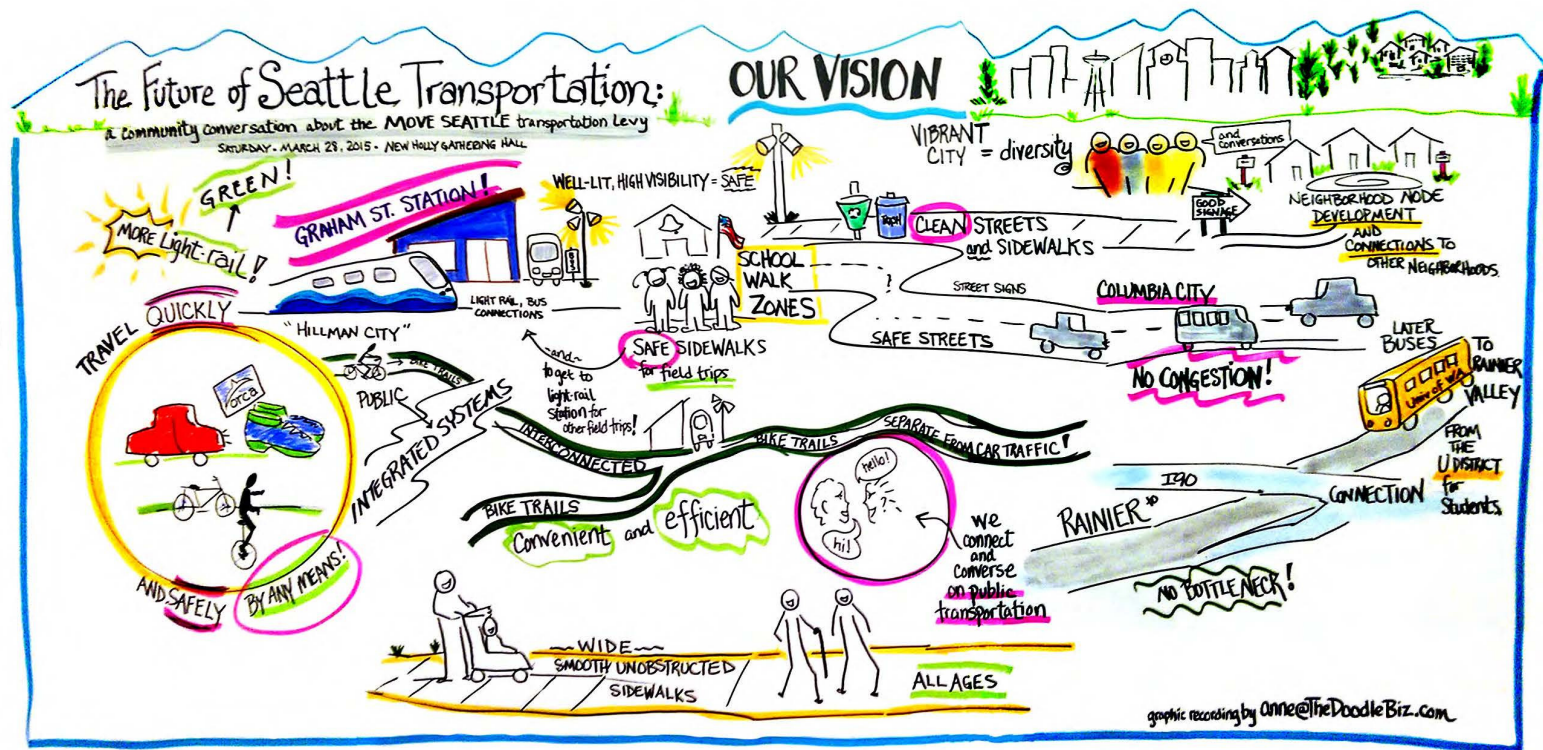


People reached



1. Safety is top priority
2. Increase transit reliability and access
3. Improve walkability

1. Safety is top priority
2. Increase transit reliability and access
3. Improve walkability



Final levy proposal

Key revisions:



Walking investments



Paving investments



Transit investments



New projects

- Fauntleroy Blvd SW
- Accessible Mt. Baker



Size of levy

A Safe City

Keep Seattle travelers safe by working to eliminate serious and fatal crashes and seismically reinforcing vulnerable bridges

Invest \$320 million over 9 years to:

- Implement Vision Zero, a program to eliminate serious and fatal crashes on Seattle streets
- Protect our most vulnerable travelers – people walking and biking, and our youngest and oldest residents
- Keep our bridges safe



An Affordable City

Invest in maintenance today to avoid increased expense for Seattle residents later and provide alternatives to car ownership, including more affordable travel options.

Invest \$250 million over 9 years to:

- Provide tools to help people get around without the expense of owning a car
- Maintain and modernize 250 lane miles of our hardest-working arterial streets



An Interconnected City

Provide an easy-to-use, reliable transportation system that gives travelers the options they want when they want them.

Invest \$260 million over 9 years to:

- Modernize outdated streets to give people convenient and affordable travel options
- Develop better connections to light rail
- Make it easier to walk and bike in Seattle

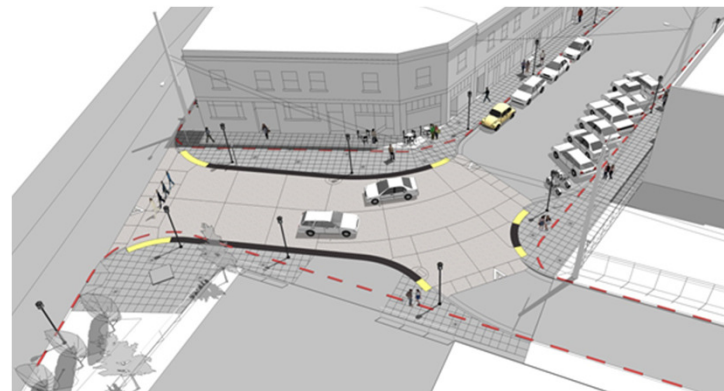


A Vibrant City

Invest in streets and sidewalks that hum with economic and social activity.

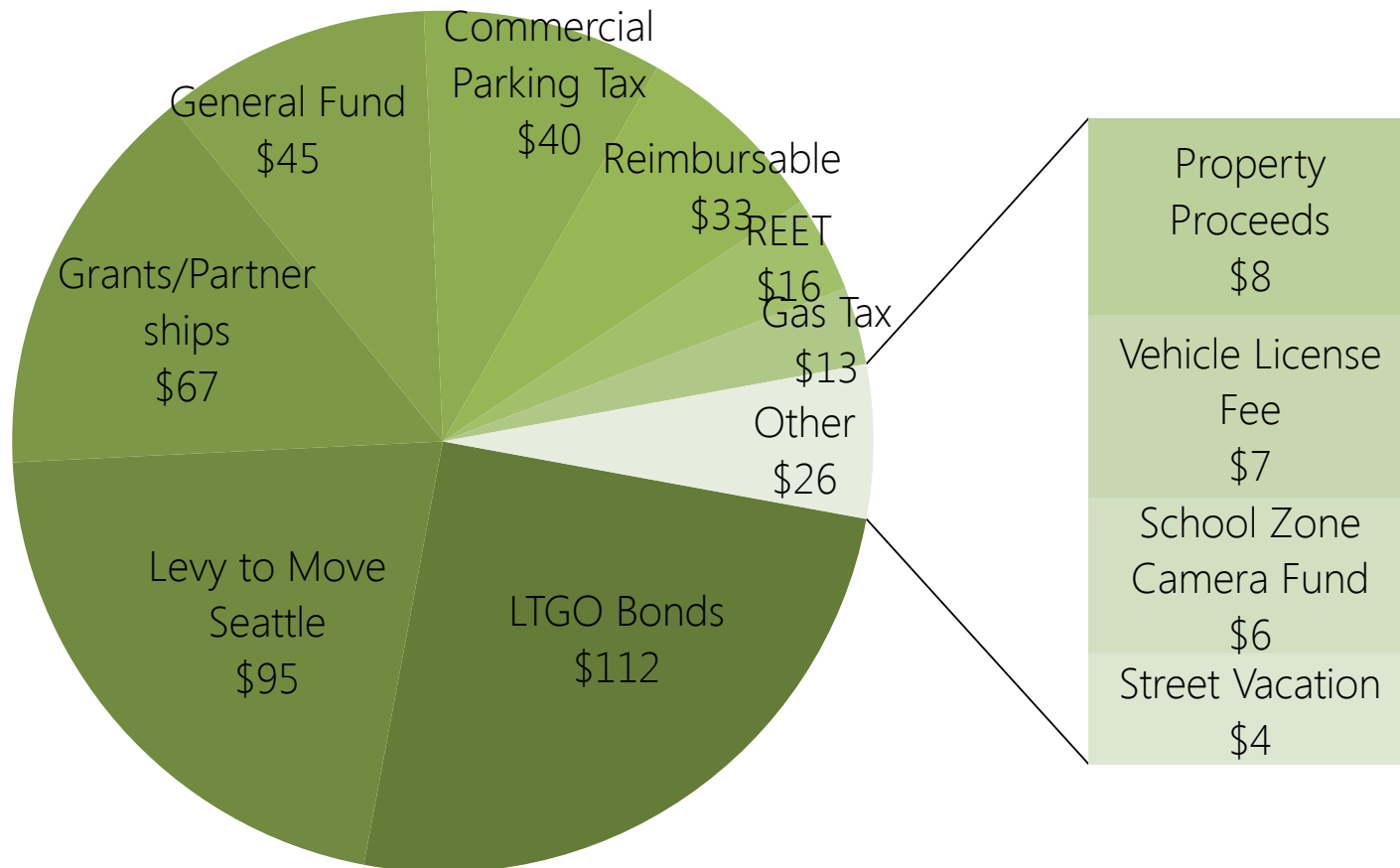
Invest \$100 million over 9 years to:

- Improve mobility for freight and delivery vehicles
- Invest in neighborhood priority projects
- Take care of our urban forest and improve drainage in flood-prone areas



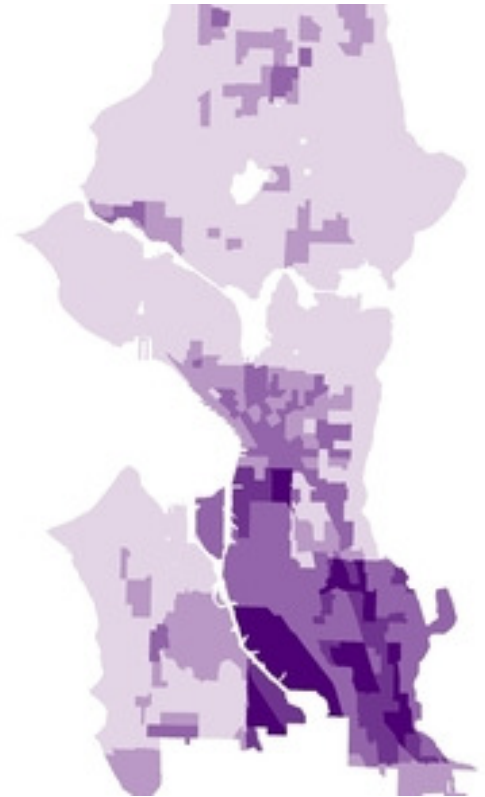
Budget context

2016 Endorsed Budget: Funding Sources with Levy to Move Seattle (in millions)



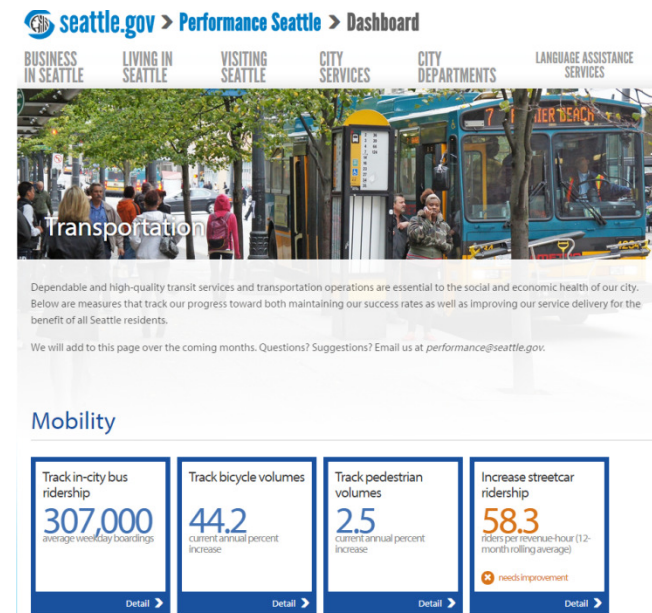
Equity

- Key criteria in developing our plans and project lists
- Racial Equity Toolkit and Race and Social Justice lens
- Outreach and engagement



Accountability

- Online performance dashboard monitoring
- Change controls and project tracking
- Levy oversight committee, appointed by Mayor and Council



PM

a

C

Seattle Department of Transportation

Project Status Report as of 3/19/15

Project-TC365440 AAC; Report Level-Management; Indicator-Red, Yellow, Green, Gray; All Milestones

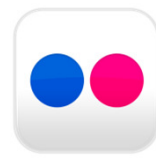
| Schedule | Cost | Scope | Subproject ID | Subproject Title | Total Cost Est | Current Milestone | Duration | Construction % Complete | Right-of-Way | Grant Funding |
|--------------|--------------|--------------|---------------|-------------------------------|----------------|-------------------|----------|-------------------------|--------------|---------------|
| <div>G</div> | <div>G</div> | <div>Y</div> | TC36544047 | AAC - 1st Ave | 254,467 | 90% | | | ROE | |
| <div>G</div> | <div>G</div> | <div>G</div> | TC36544055 | AAC - Renton Ave S - Phase I | 3,340,000 | 100% | 3 Mos | | None | FHWA |
| <div>G</div> | <div>G</div> | <div>G</div> | TC36544056 | AAC - Renton Ave S - Phase II | 3,935,000 | DS | 3 Mos | | | |
| <div>G</div> | <div>G</div> | <div>G</div> | TC36544050 | AAC - Roosevelt | 7,195,498 | 90% | 9 Mos | | TCE | FHWA |
| <div></div> | <div></div> | <div>G</div> | TC36544052 | AAC - Spokane St | 1,845,000 | DS | 3 Mos | | None | |

Next steps

| Date | Action |
|--------------|--|
| Mid-May 2015 | Mayor transmits legislation |
| May 29 | SDOT briefs City Council Select Committee |
| June 2 | Public Hearing, 5:30 PM, City Council Chambers |
| June 9 | SDOT briefs City Council Select Committee |
| June 23 | SDOT briefs City Council Select Committee |
| August 4 | King County Elections deadline |

Questions?

www.seattle.gov/LevytoMoveSeattle



Bridging the Gap and Levy to Move Seattle comparison table of commitments

| Category | Bridging the Gap | Levy to Move Seattle |
|--------------------------------------|------------------------|--|
| Paving | 200 miles | 250 miles |
| Seismic bridge retrofit | 5 | 16 |
| Rehab/replace bridges | 5 | 2 |
| Plan and design new bridges | Not a BTG commitment | 10 |
| Repair sidewalks | 144 blocks | 225 blocks |
| New sidewalks | 117 blocks | 100 + blocks in South Park and Broadview |
| Crossing improvements and curb ramps | Fund and implement PMP | 750 intersections |
| Stairway rehabilitation | 40-50 | 45 |
| Crosswalks (remarking) | 5,000 | 12,000 |
| Low-cost pedestrian improvements | Not a BTG commitment | 50-100 blocks |

Bridging the Gap and Levy to Move Seattle comparison table of commitments

| Category | Bridging the Gap | Levy to Move Seattle |
|------------------------------|---------------------------|---|
| Safe Routes to School | 30 schools | 81-108 (100% of Seattle public schools) |
| Safety corridors | Not a BTG commitment 3 | 12-15 |
| Multi-use paths | 4 miles | Burke Gilman – 1.5 miles |
| Bike lanes | Fund and implement BMP | 50 miles of protected bike lanes 60 miles of greenways |
| Bike accessibility (parking) | Not a BTG commitment | 1,500 spaces |
| Freight spot improvements | \$0 | \$13.5 M |
| New trees | 8,000 | 2,700 |
| Trees pruned | 25,000 | 27,000 |
| Optimize signals | 0 | 45 corridors |

Bridging the Gap and Levy to Move Seattle comparison table of commitments

| Category | Bridging the Gap | Levy to Move Seattle |
|-------------------------------------|---------------------------------|--|
| Multimodal corridors | 0 | 7-10 |
| Transit corridors | 3 | 7 |
| Access to transit | 1 (King St Station; CPT funded) | 2 (Graham St Station, Northgate ped/bike bridge) |
| Neighborhood Street Fund | 30 completed | 20-35 projects |
| Comprehensive drainage coordination | 0 | 2 neighborhoods (South Park and Broadview) |