

Accepting Tieback Easement Private Property adjacent to Seward Park

City Council

Seattle Public Utilities and Neighborhoods

Committee

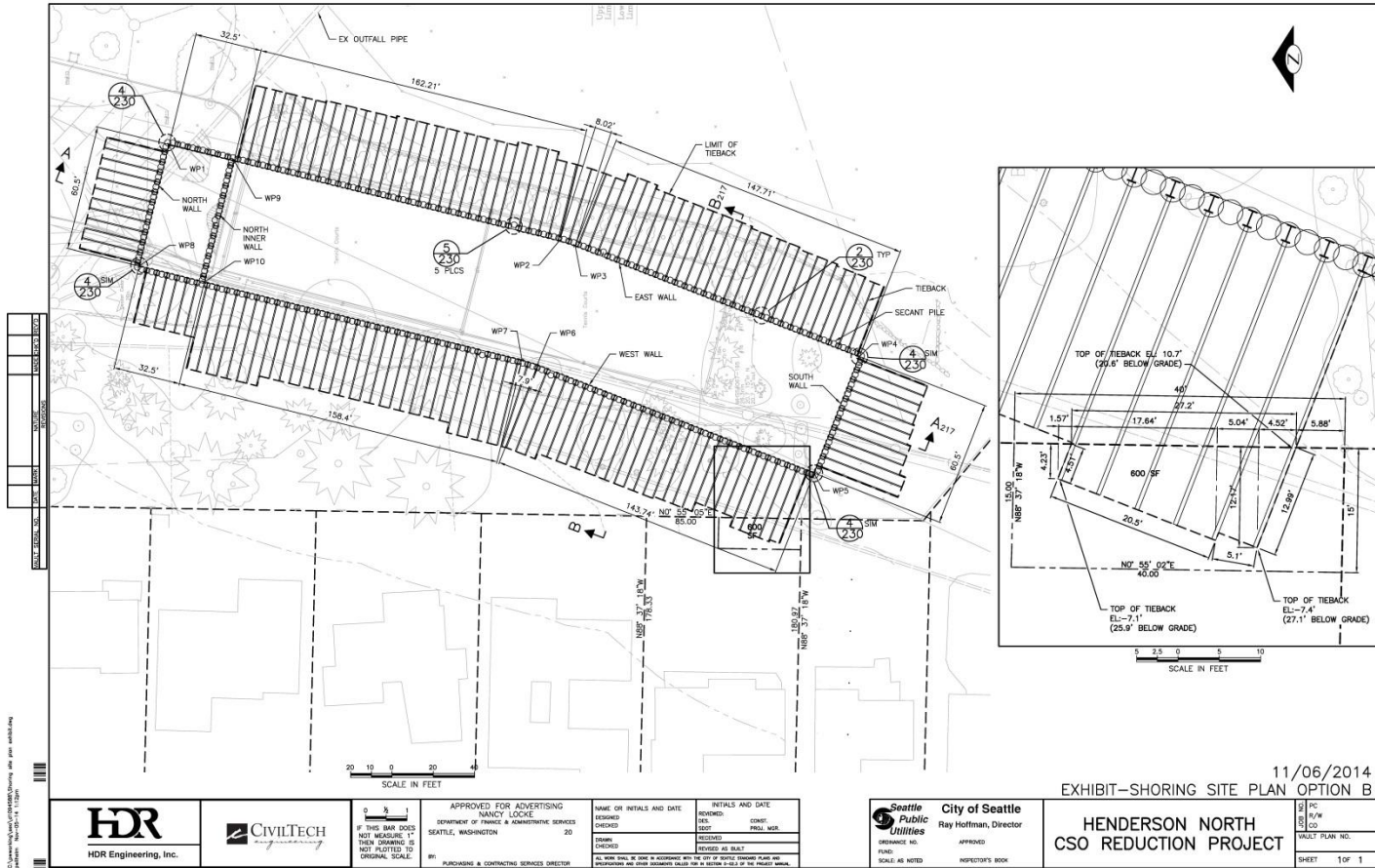
December 3, 2015

Seattle
 Public
Utilities

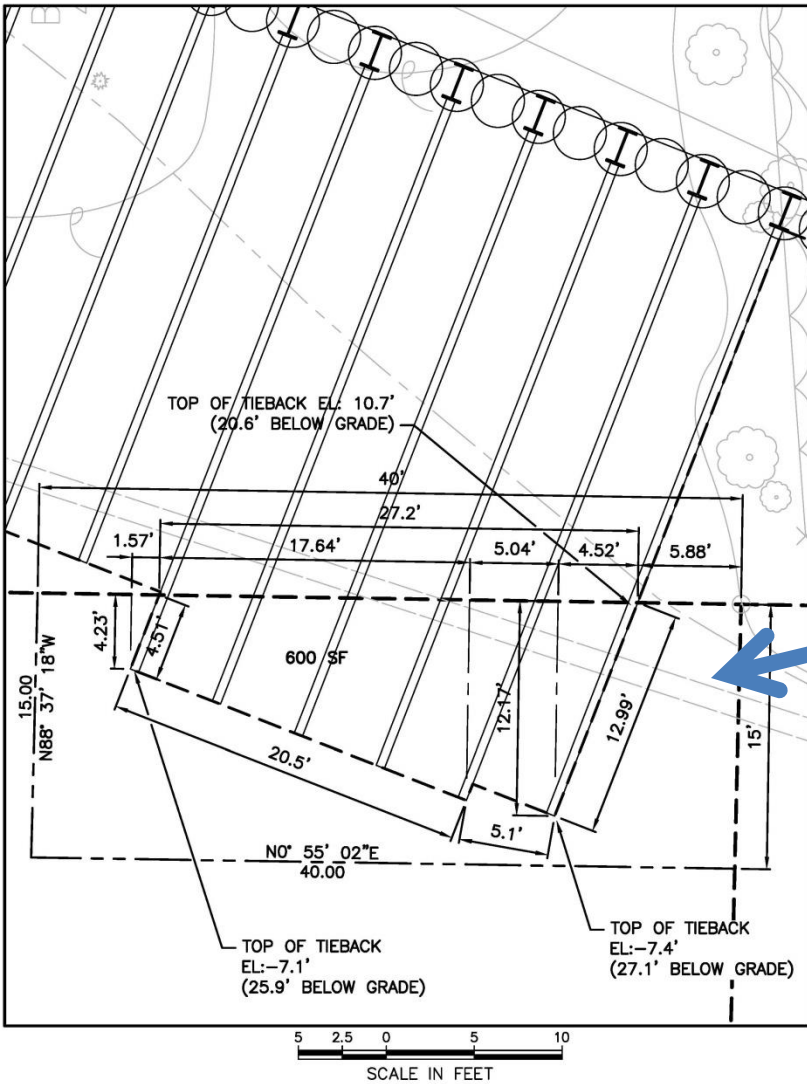
Overview

- Underground Combined Sewer Storage Tank under construction in Seward Park
- Use of tiebacks extending into private property reduce tank construction costs by \$205,000
- Property owner granted SPU a tieback easement for \$26,472

Engineering Plan



Detail showing tiebacks in private property



Today's Legislation

- Accepts Tieback Easement
- Places it under the jurisdiction of Seattle Public Utilities

Questions?