

# SPU Water Easements Acceptance Ordinance

Seattle City Council  
Civil Rights, Utilities, Economic  
Development and Arts Committee

*June 14, 2016*

Seattle  
 Public  
Utilities

# Background

- ❑ Authorizes acceptance of 12 Easements
- ❑ When private property owners develop or improve their property, they may be required to put SPU facilities on their private property
- ❑ To operate SPU facilities such as fire hydrants and water lines on or within private property, the City requires easements for access, operations and maintenance

# Bundling Acceptances

- Accepts permanent property rights in multiple locations
- Easements establish SPU's rights to operate City facilities on private property
- Easements were acquired at no cost to the City
- Batch ordinance saves time for Council and other departments

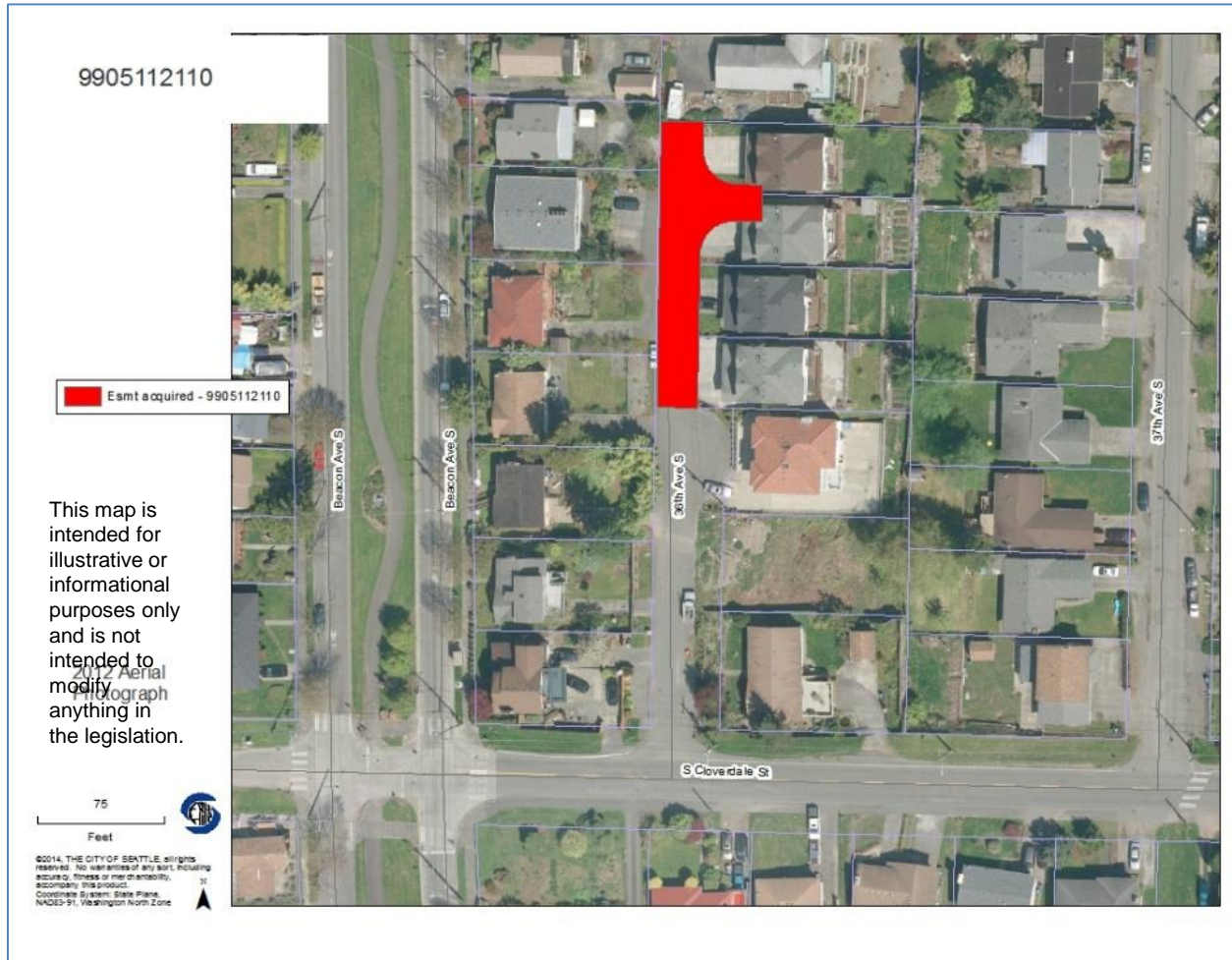
# Easement locations

- S Cloverdale St and 36th Ave S
- 9500 block of Myers Way S
- N 143rd St and Fremont Ave N
- S Holly Park Dr and S Myrtle St
- S King St and Occidental Ave S
- N 45th St and Stone Way N
- Columbia Road and NE Boat St
- S Willow St and Rainier Ave S
- S Graham St and Beacon Ave S
- 51st Ave S and S Bond St

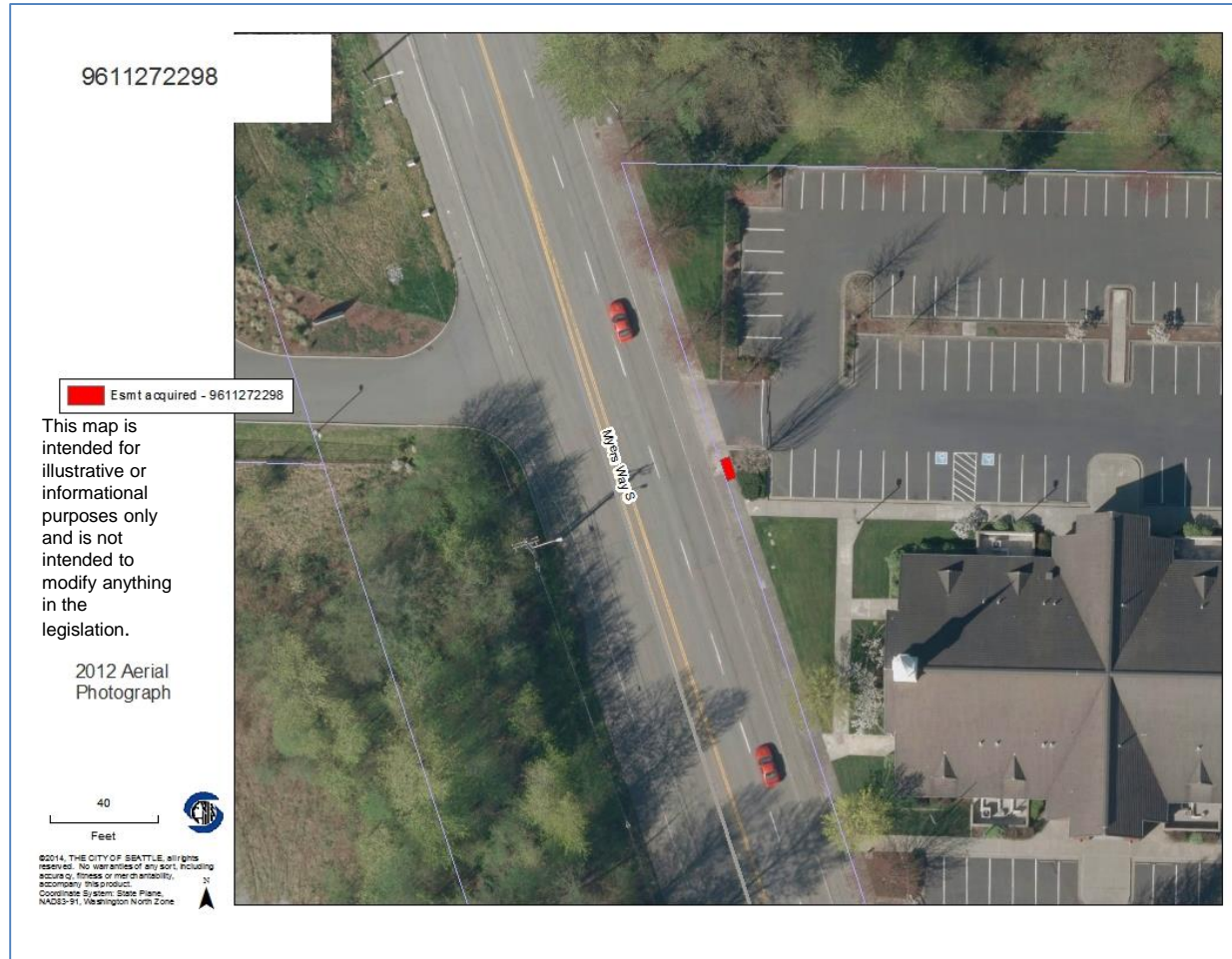
# Easement Locations



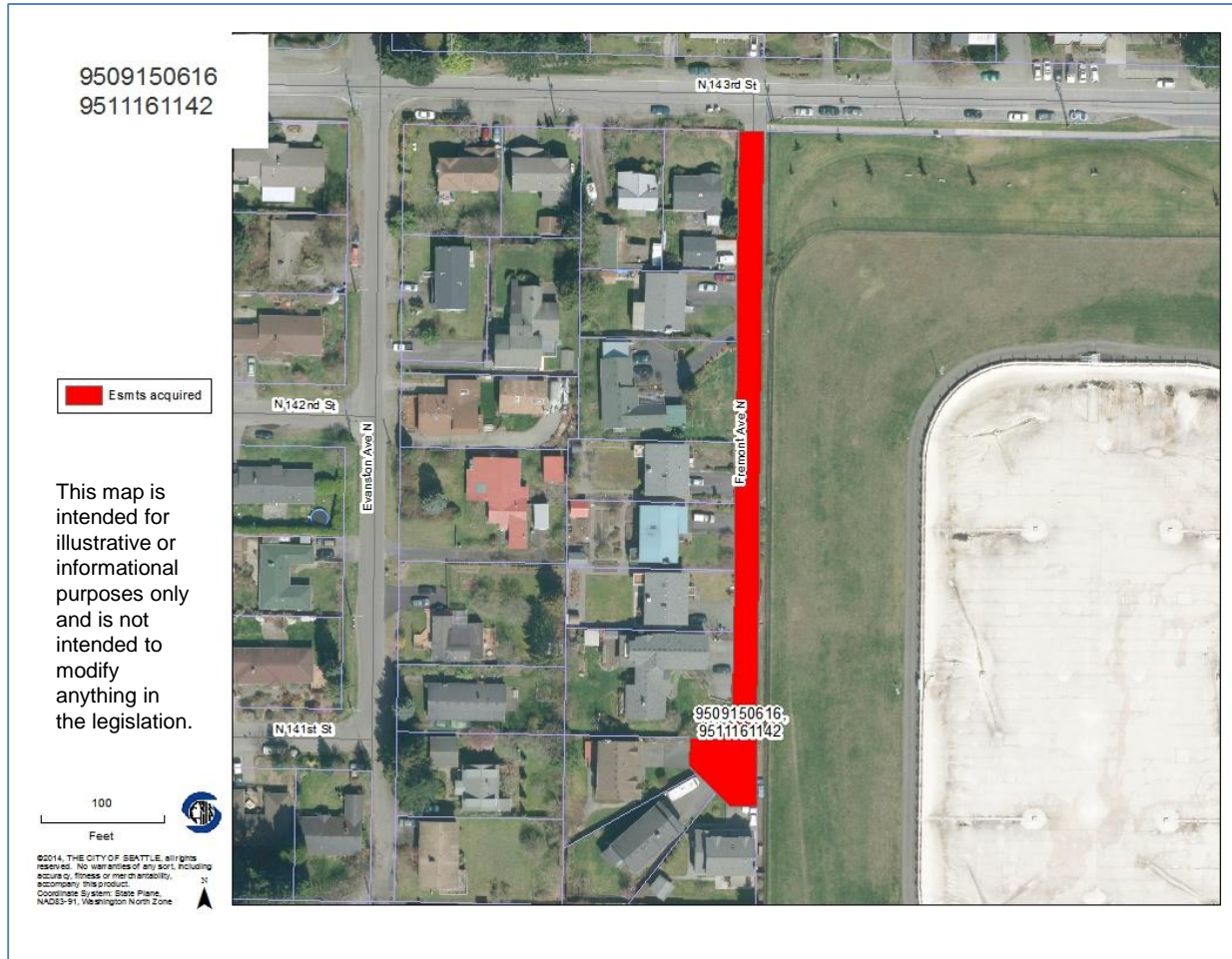
# S Cloverdale St and 36th Ave S



# 9500 block of Myers Way S

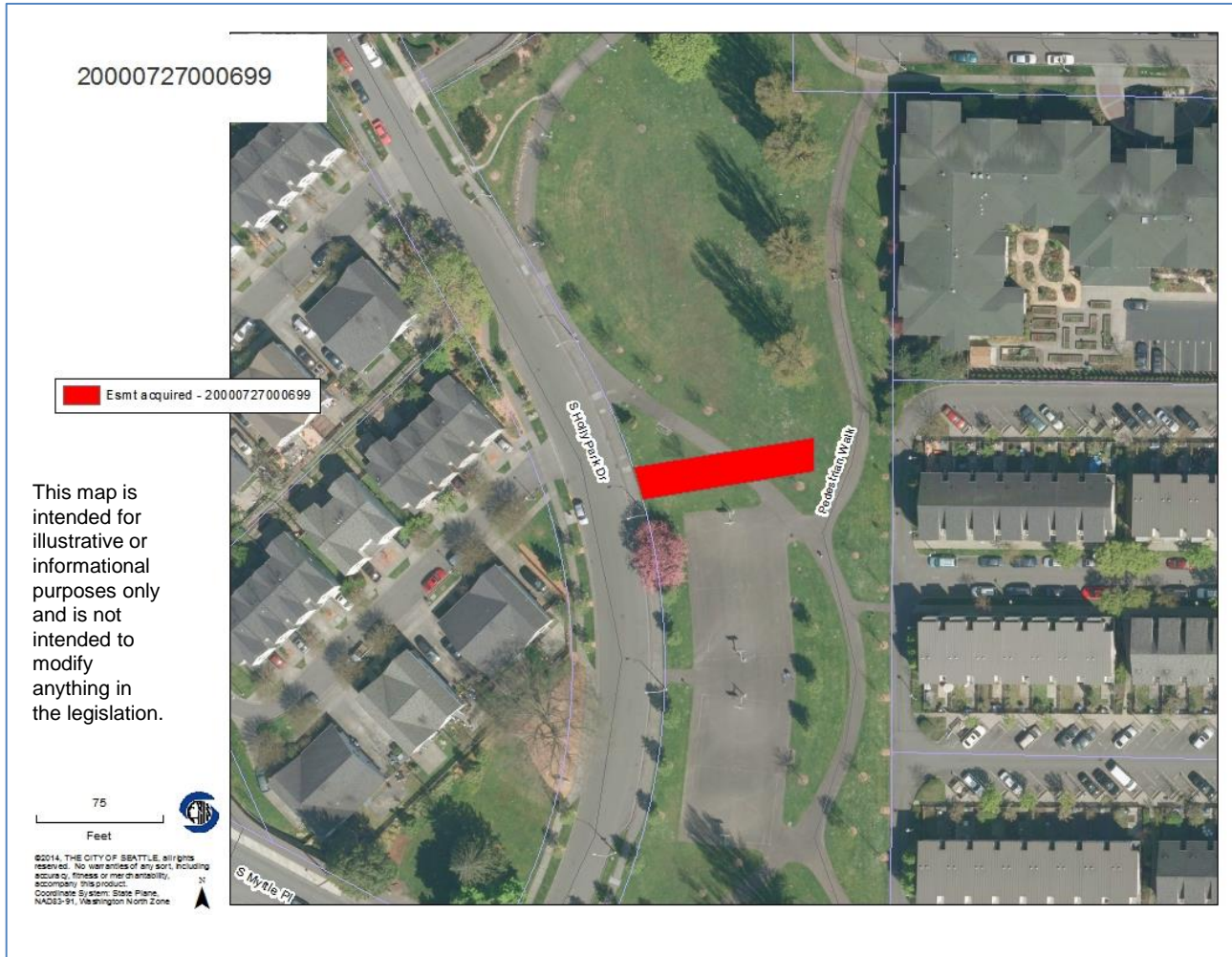


# N 143rd St & Fremont Ave N (two easements)

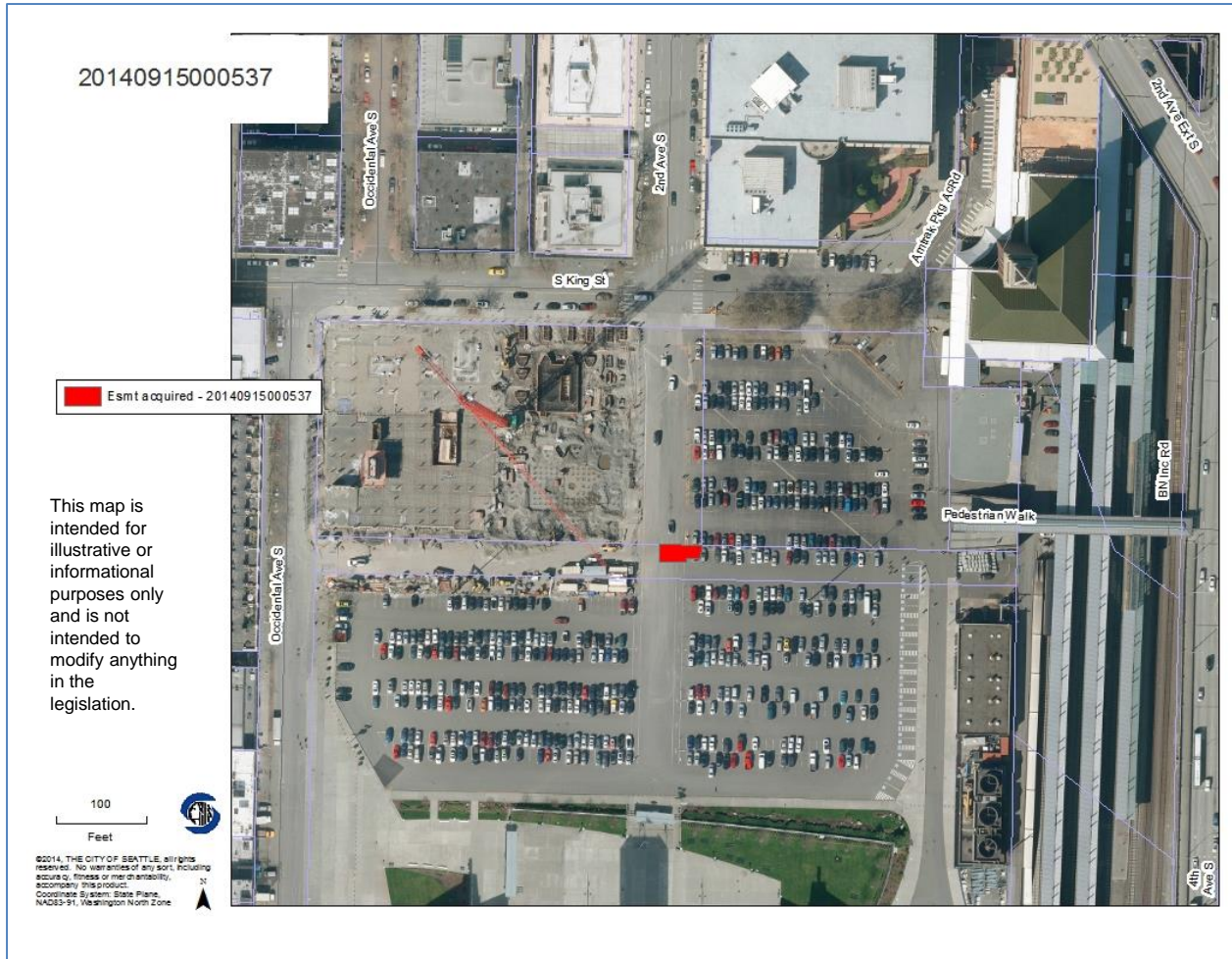




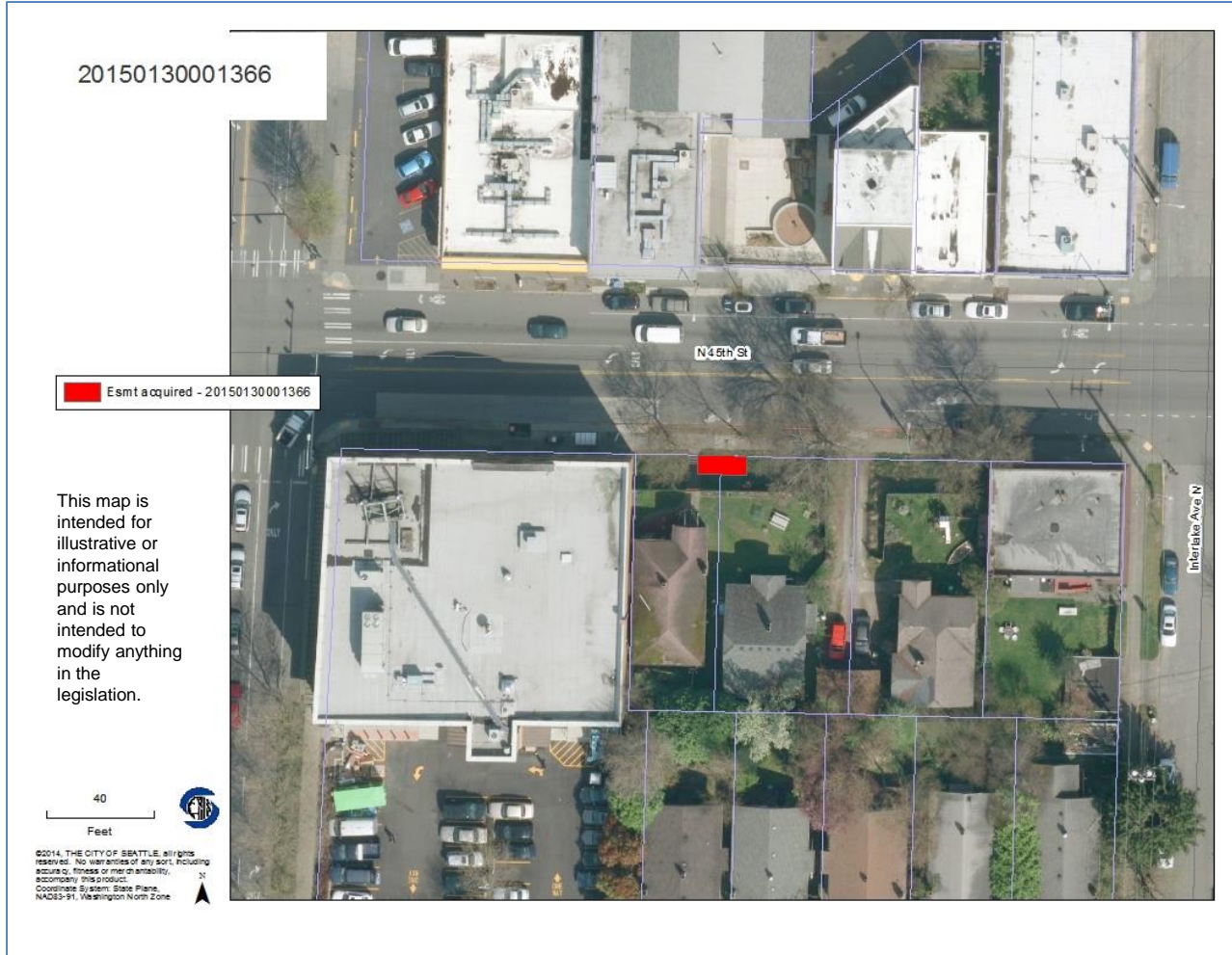
# S Holly Park Dr and S Myrtle St



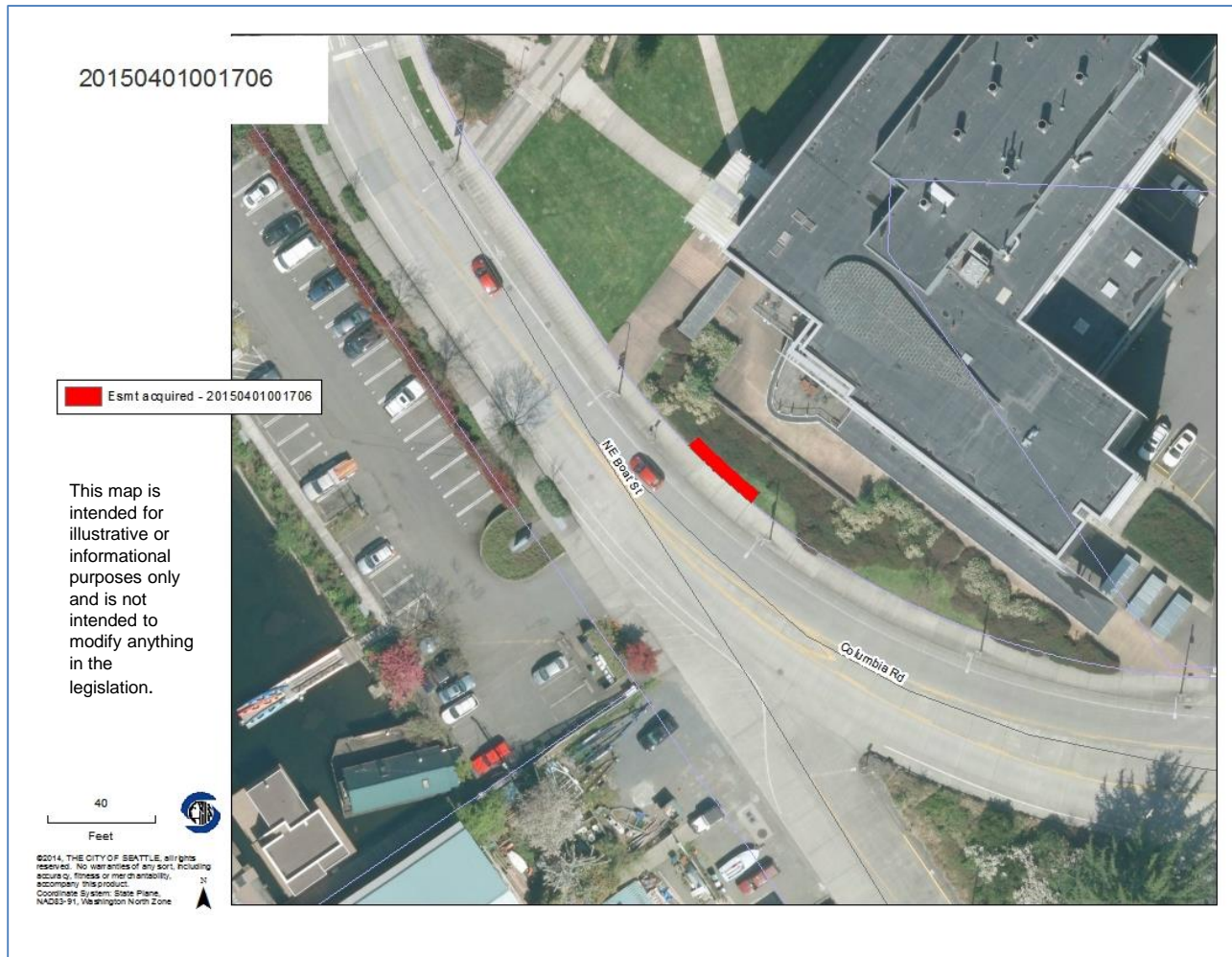
# S King St and Occidental Ave S



# N 45th St and Stone Way N



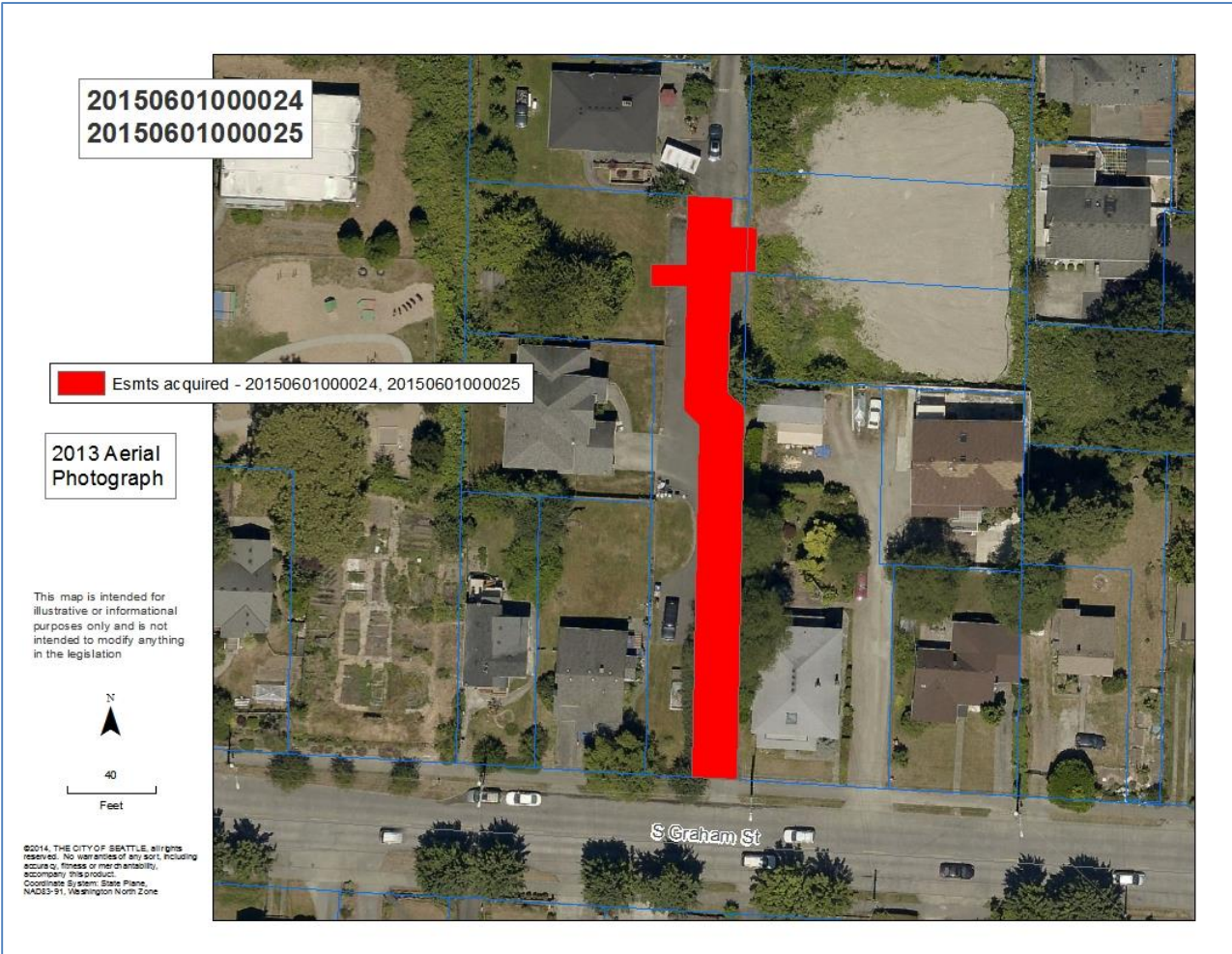
# Columbia Road and NE Boat St



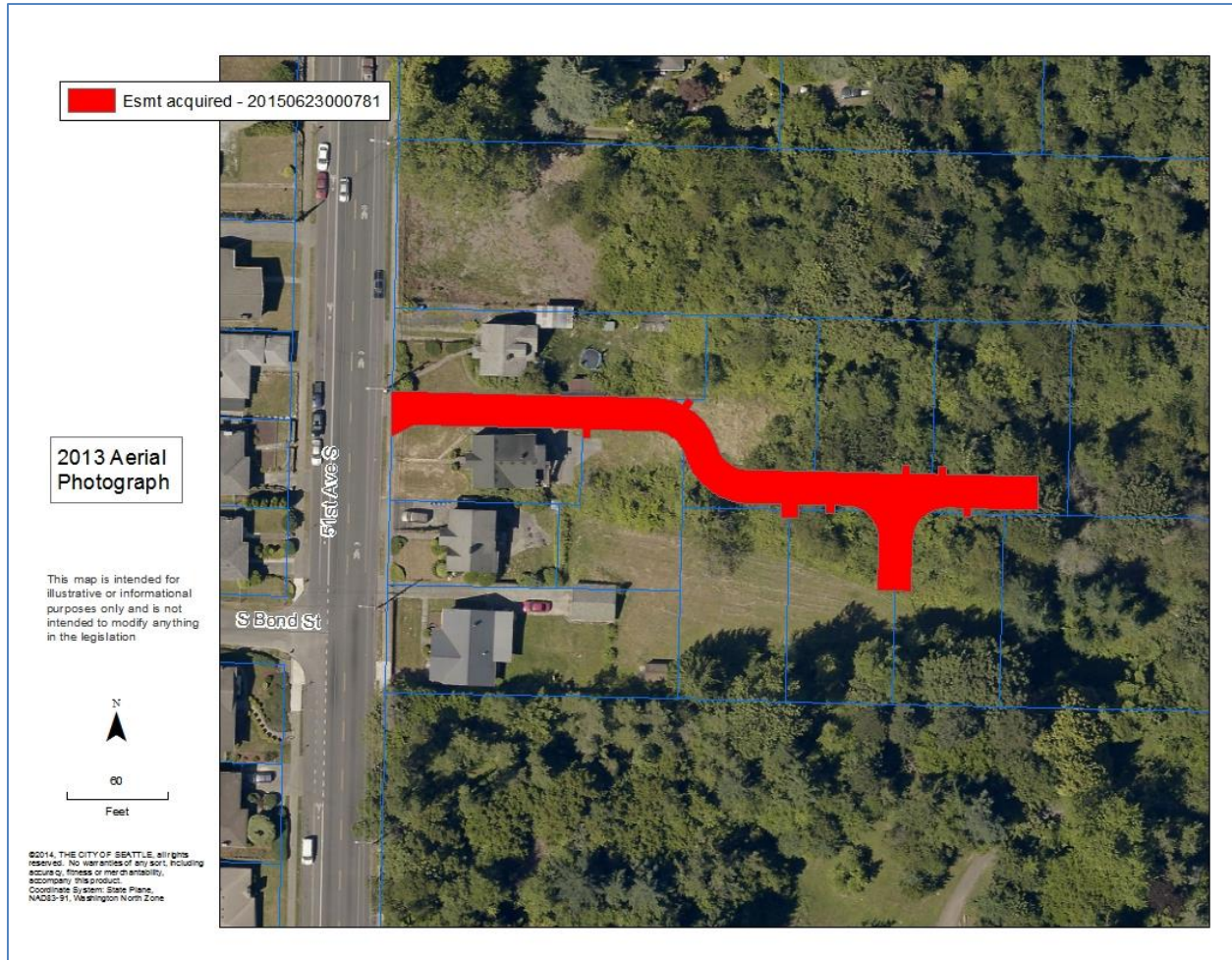
# S Willow St and Rainier Ave S



# S Graham St and Beacon Ave S (two easements)



# 51st Ave S and S Bond St



# Questions?