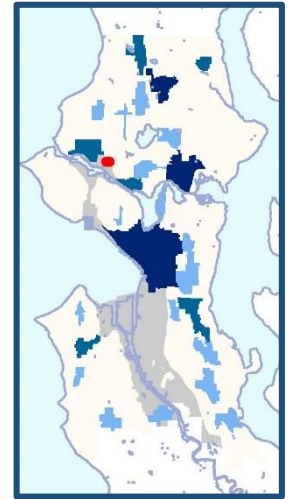
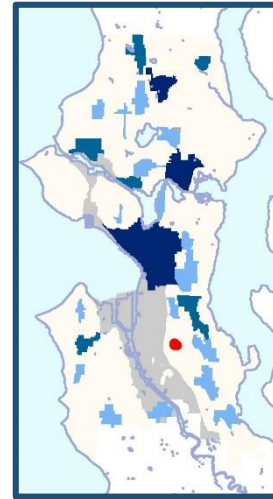
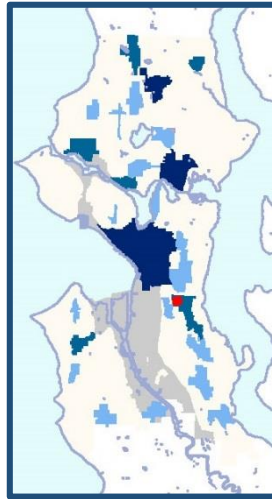
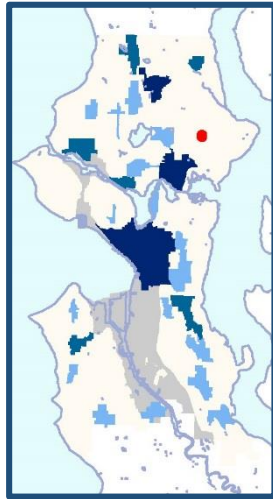
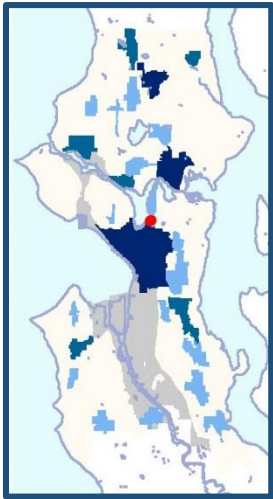


Planning, Land Use & Zoning Committee

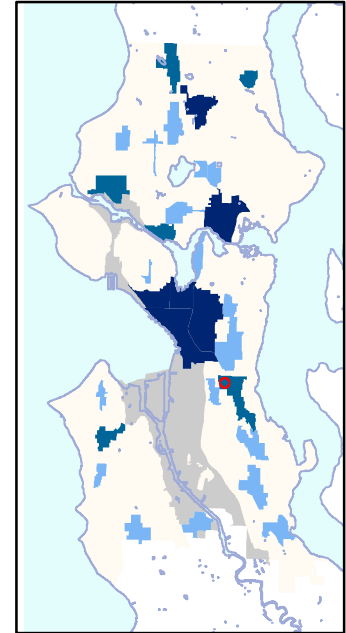
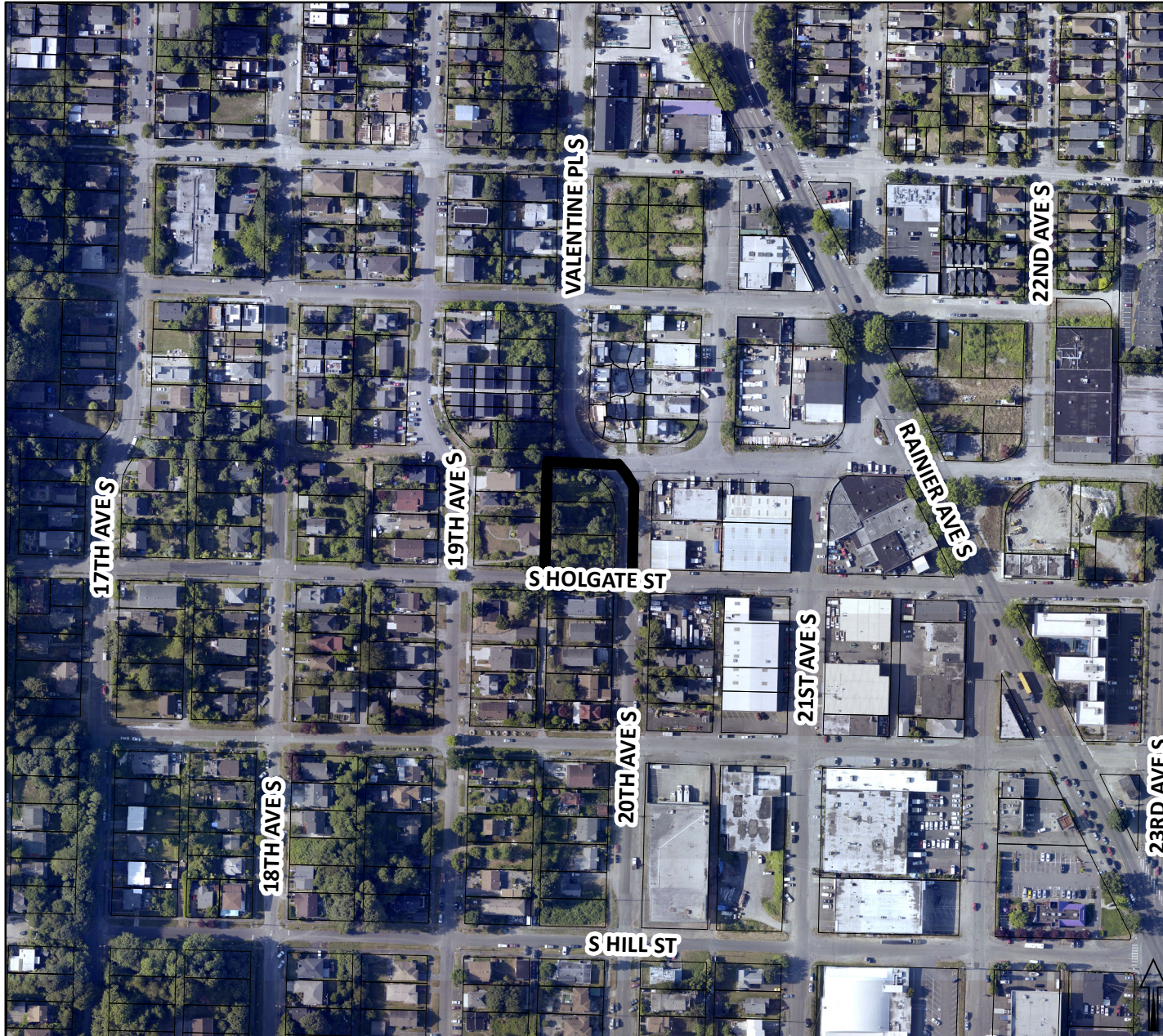


**LOCATIONS OF COMPREHENSIVE PLAN AMENDMENTS
PROPOSED FOR CONSIDERATION IN 2017**

from Clerk File 319807

Lish Whitson, Council Central Staff
July 19, 2016

PROPOSED FUTURE LAND USE MAP AMENDMENT S Holgate St/20th Ave S



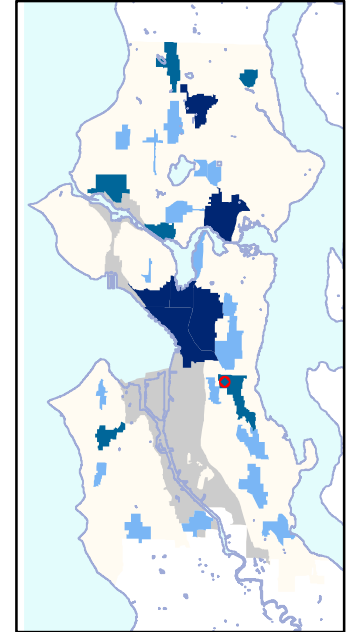
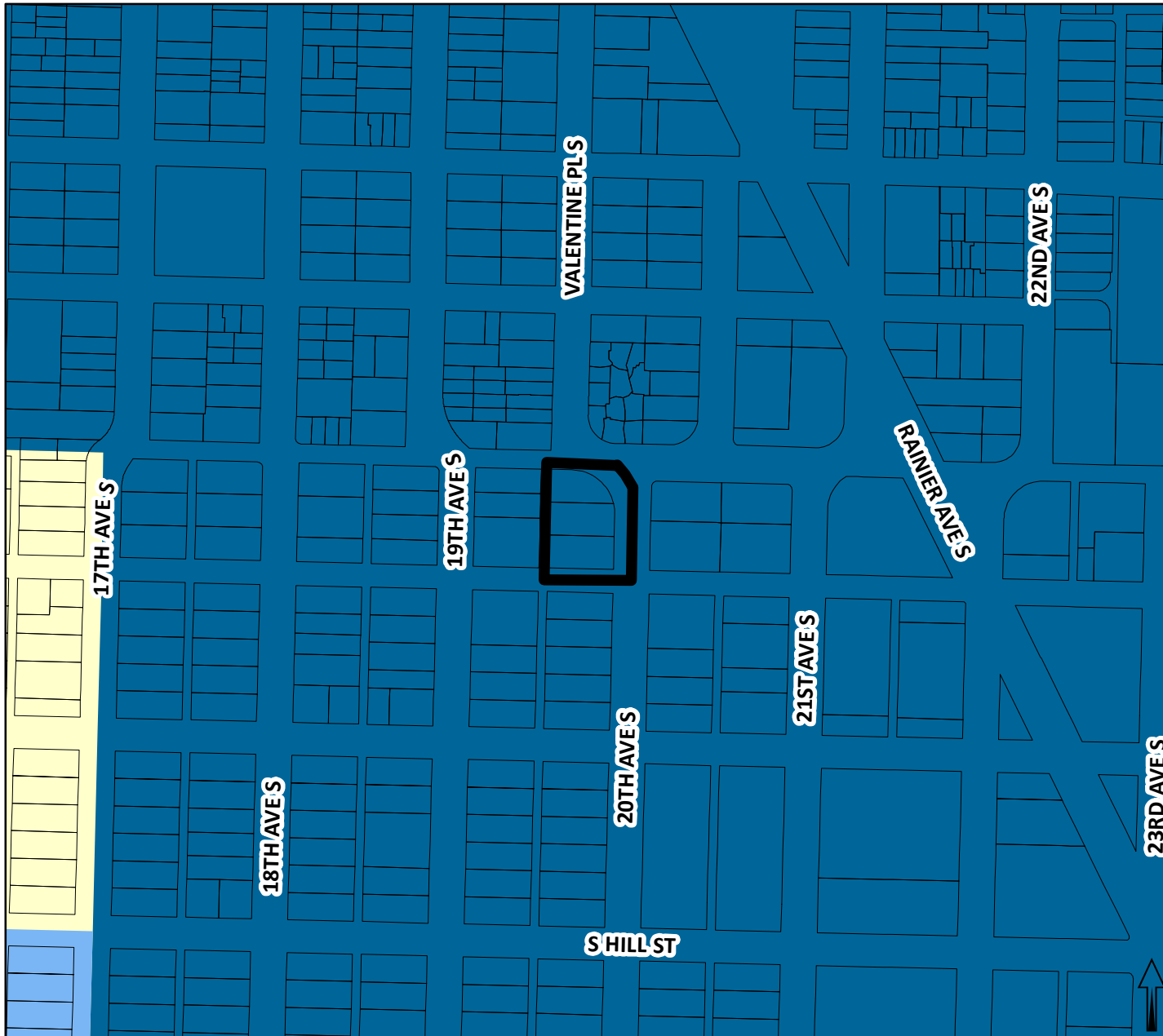
Prepared by:
Seattle City Council Central Staff
No warranties of any sort, including
accuracy, fitness or merchantability
accompany this product.

Copyright, City of Seattle
July 13, 2016

All rights reserved

0.1 Miles

PROPOSED FUTURE LAND USE MAP AMENDMENT S Holgate St/20th Ave S

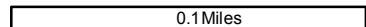


- Urban Center
- Hub Urban Village
- Residential Urban Village
- Manufacturing / Industrial Center
- Single Family Residential Areas
- Multi-Family Residential Areas
- Commercial / Mixed Use Areas
- Industrial Areas
- Major Institutions
- City-Owned Open Space

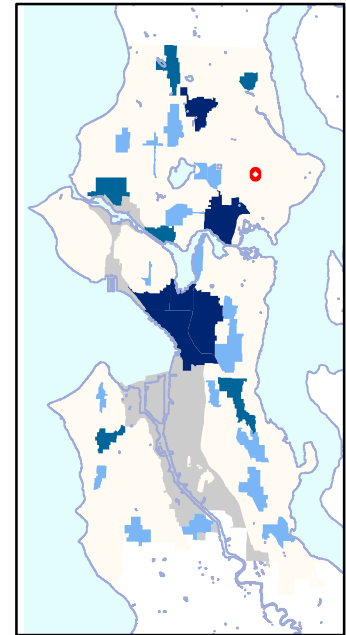
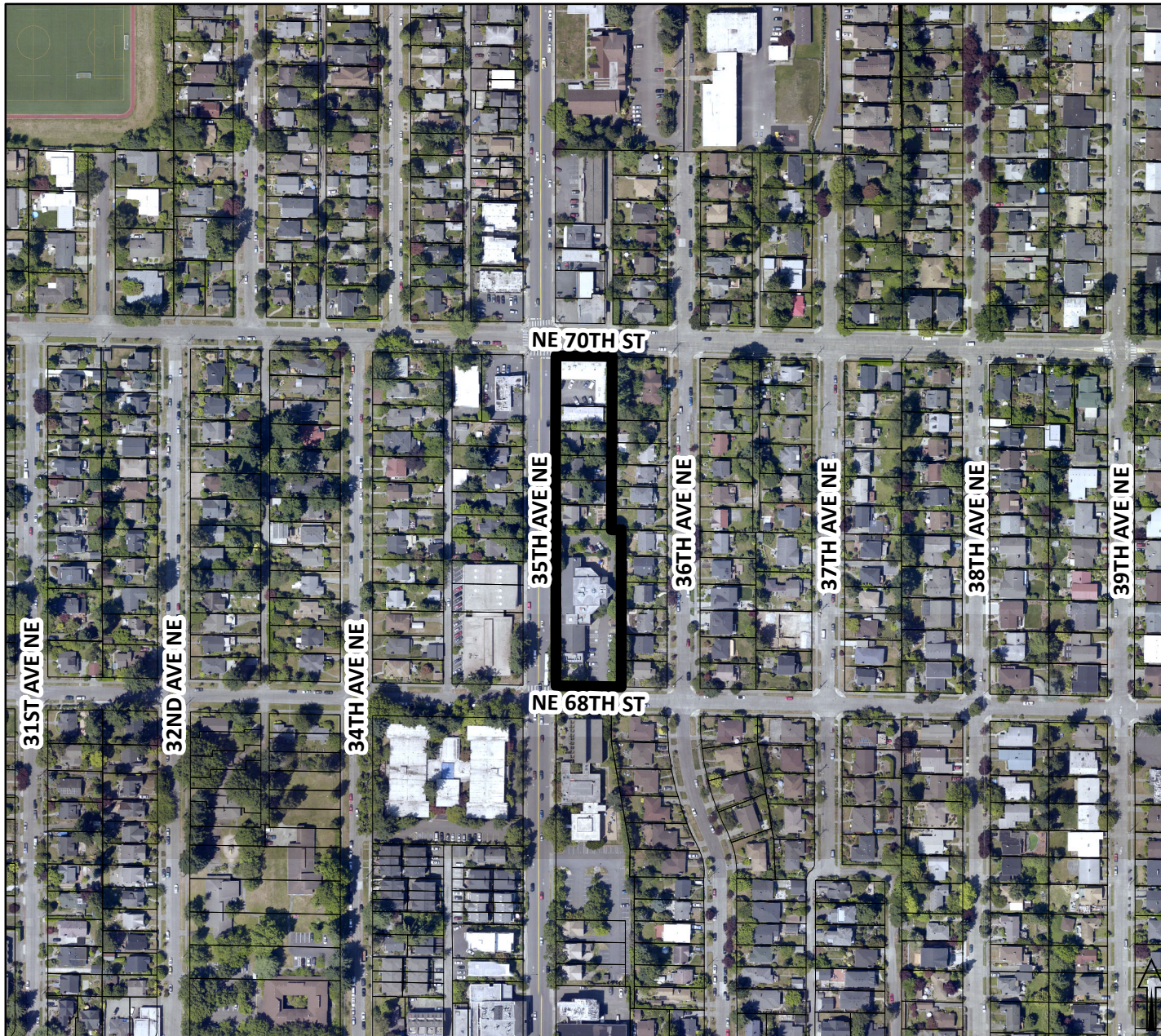
Prepared by:
 Seattle City Council Central Staff
 No warranties of any sort, including accuracy, fitness or merchantability accompany this product.

Copyright, City of Seattle
 July 13, 2016

All rights reserved



PROPOSED FUTURE LAND USE MAP AMENDMENT Congregation Beth Shalom



Prepared by:
Seattle City Council Central Staff
No warranties of any sort, including
accuracy, fitness or merchantability
accompany this product.

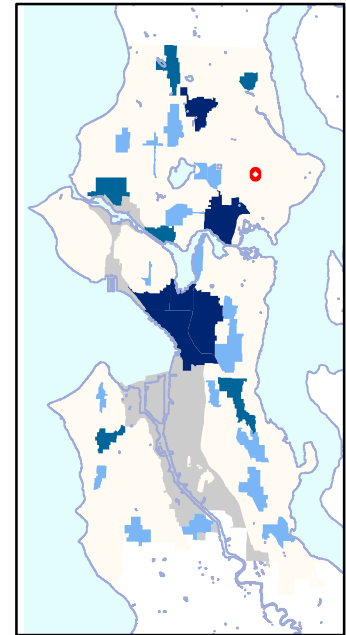
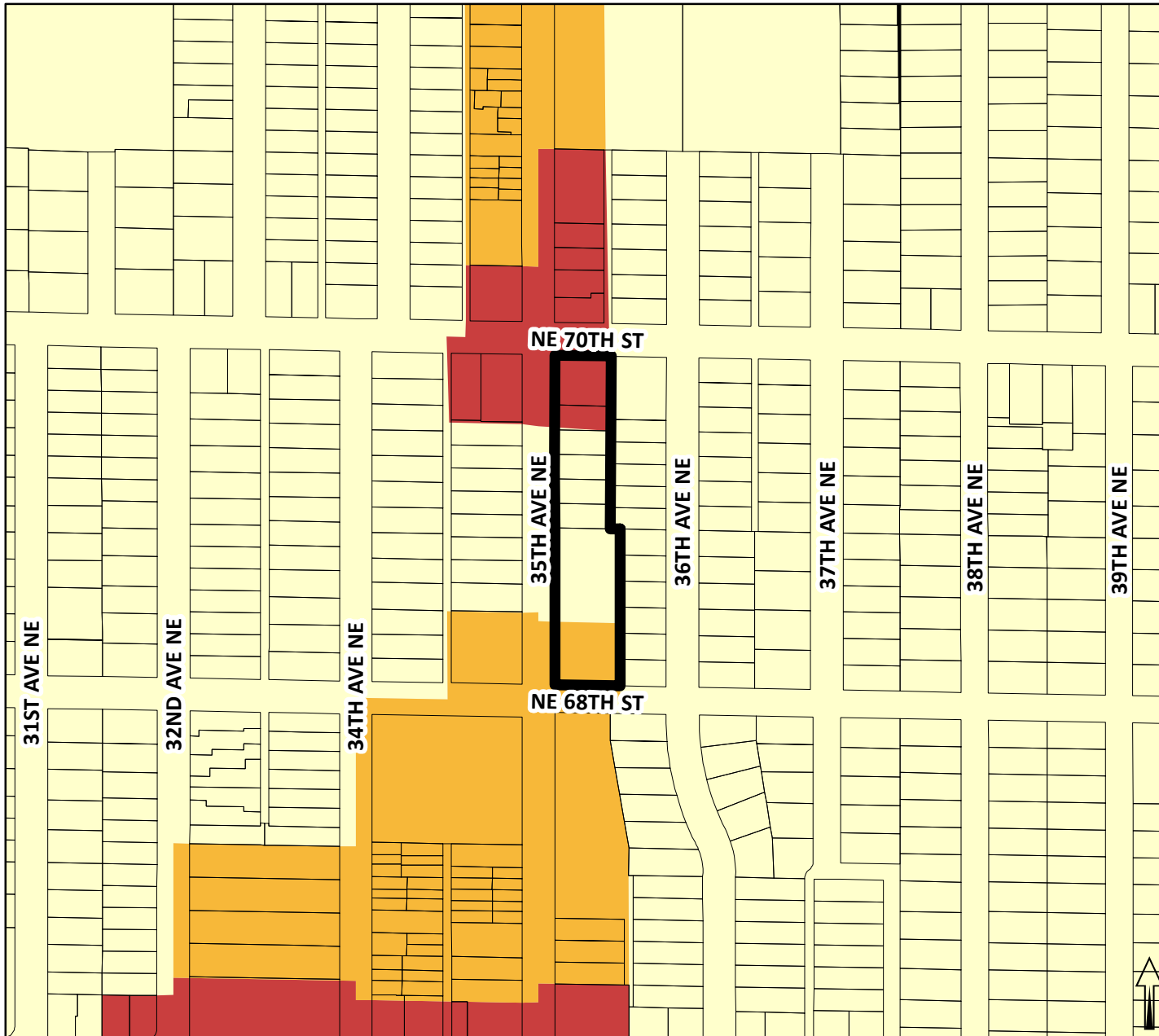
Copyright, City of Seattle
July 13, 2016

All rights reserved



0.1 Miles

PROPOSED FUTURE LAND USE MAP AMENDMENT Congregation Beth Shalom



- Urban Center
- Hub Urban Village
- Residential Urban Village
- Manufacturing / Industrial Center
- Single Family Residential Areas
- Multi-Family Residential Areas
- Commercial / Mixed Use Areas
- Industrial Areas
- Major Institutions
- City-Owned Open Space

Prepared by:
 Seattle City Council Central Staff
 No warranties of any sort, including accuracy, fitness or merchantability accompany this product.

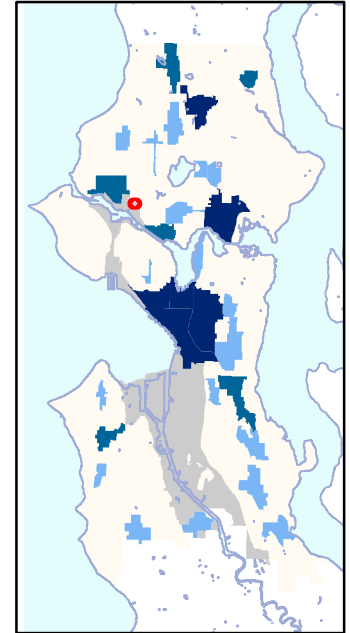
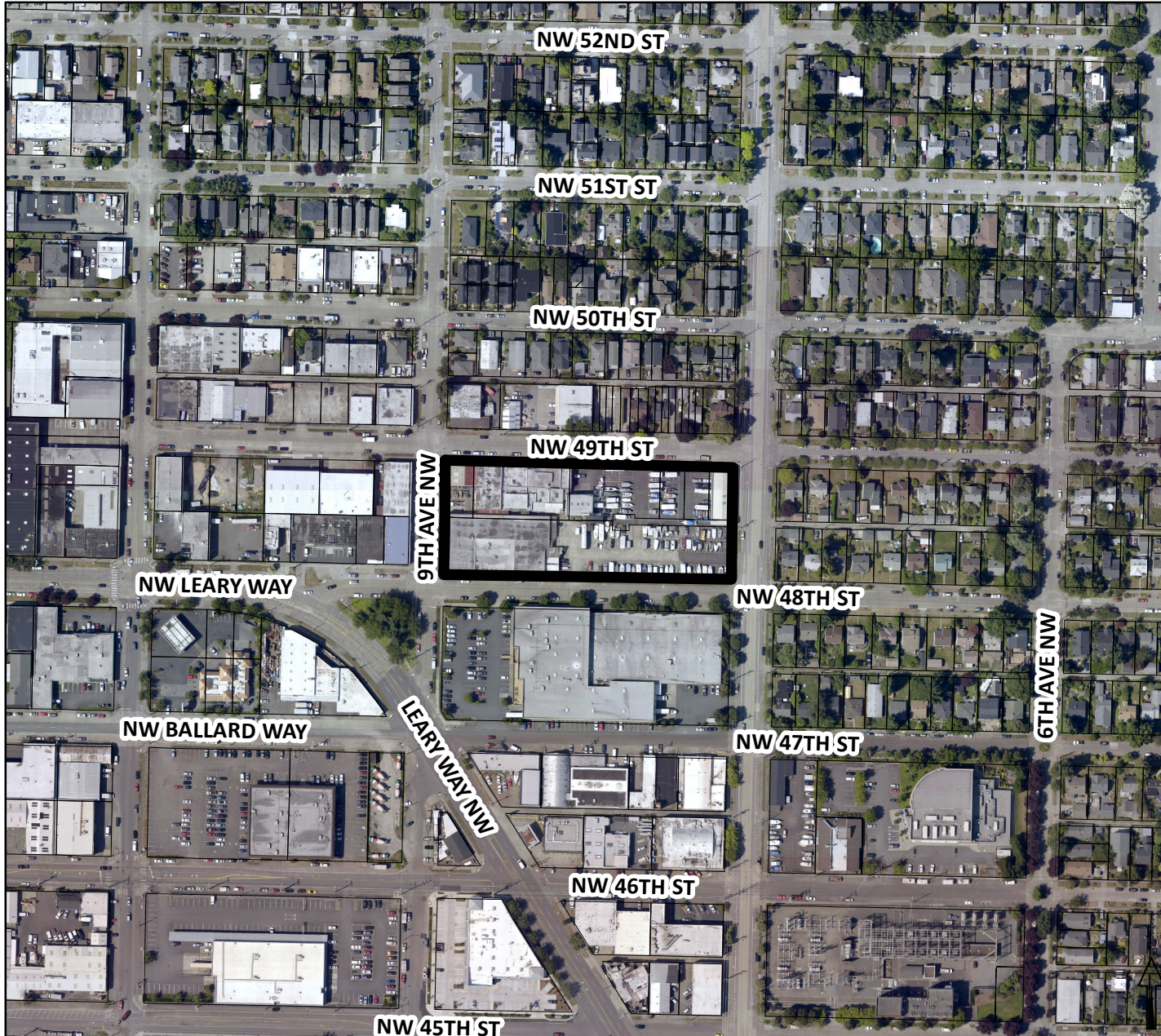
Copyright, City of Seattle
 July 13, 2016

All rights reserved



0.1 Miles

PROPOSED FUTURE LAND USE MAP AMENDMENT 844 NW 48th St



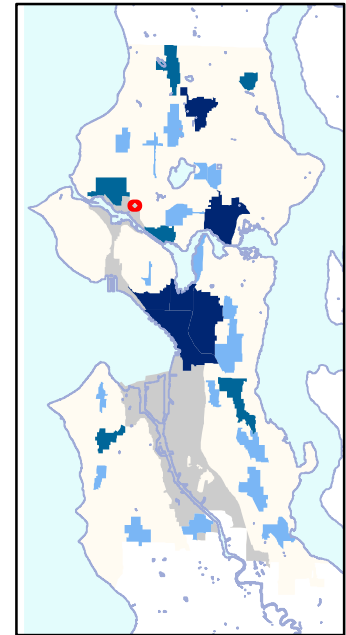
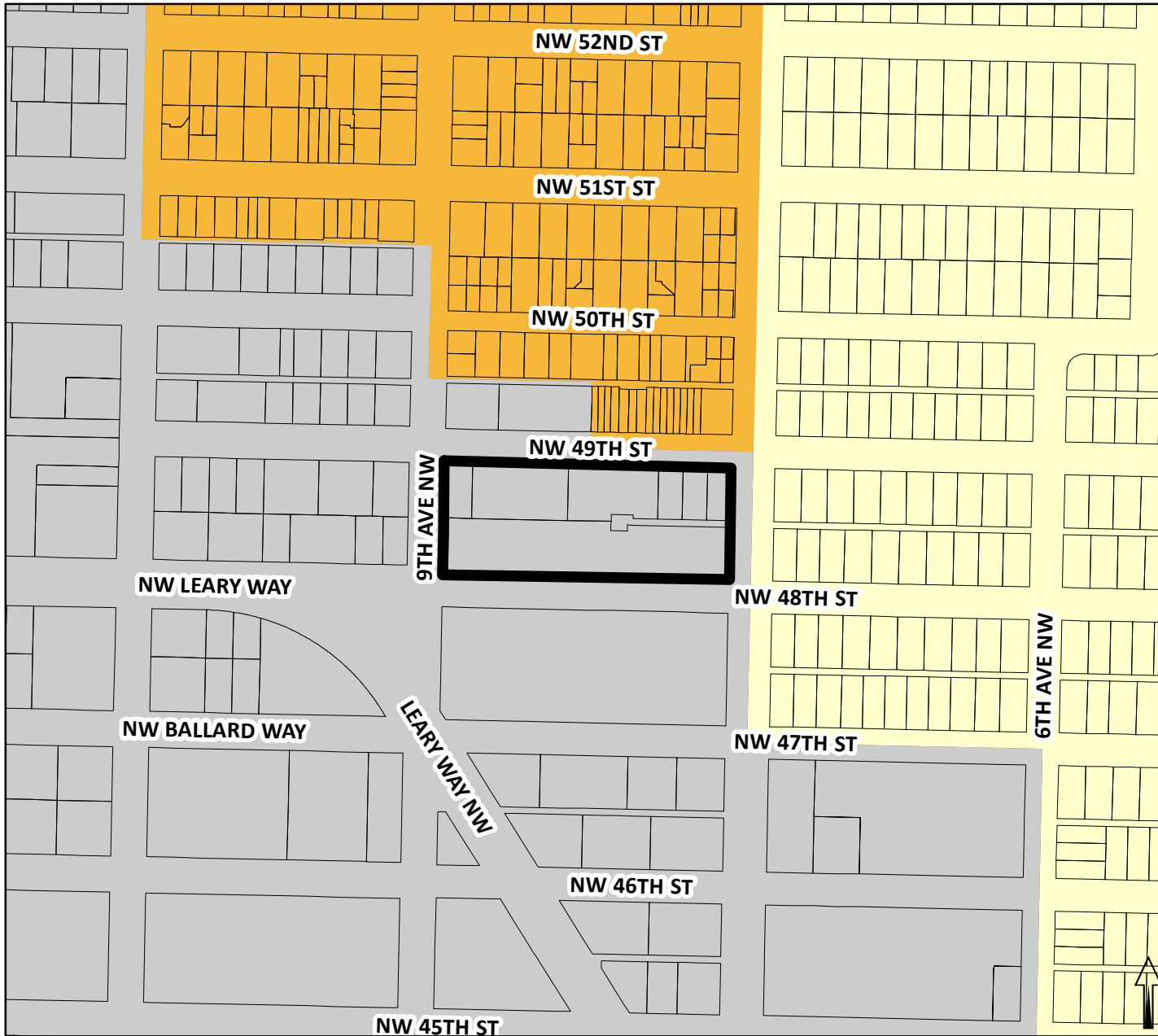
Prepared by:
Seattle City Council Central Staff
No warranties of any sort, including accuracy, fitness or merchantability accompany this product.

Copyright, City of Seattle
July 13, 2016

All rights reserved

0.1 Miles

PROPOSED FUTURE LAND USE MAP AMENDMENT 844 NW 48th St

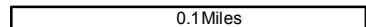


- Urban Center
- Hub Urban Village
- Residential Urban Village
- Manufacturing / Industrial Center
- Single Family Residential Areas
- Multi-Family Residential Areas
- Commercial / Mixed Use Areas
- Industrial Areas
- Major Institutions
- City-Owned Open Space

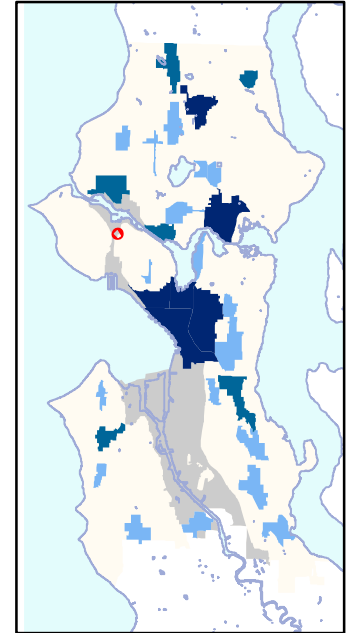
Prepared by:
 Seattle City Council Central Staff
 No warranties of any sort, including
 accuracy, fitness or merchantability
 accompany this product.

Copyright, City of Seattle
 July 13, 2016

All rights reserved



PROPOSED FUTURE LAND USE MAP AMENDMENT 1616 W Bertona St



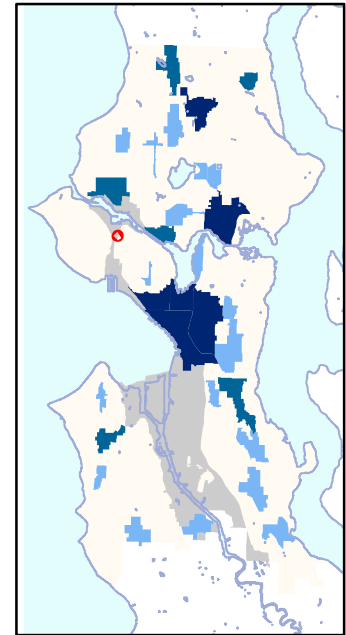
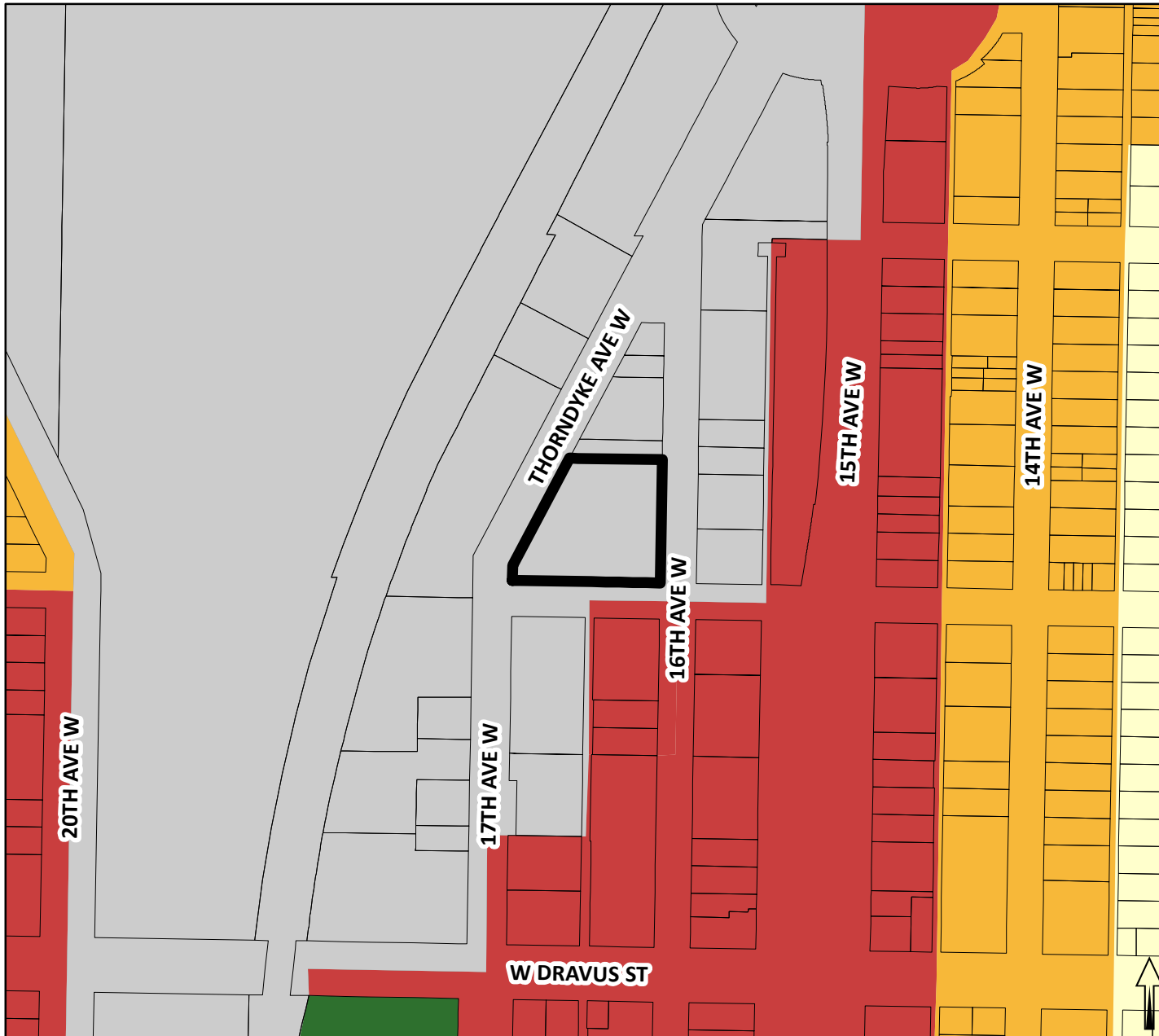
Prepared by:
Seattle City Council Central Staff
No warranties of any sort, including
accuracy, fitness or merchantability
accompany this product.

Copyright, City of Seattle
July 13, 2016

All rights reserved

0.1 Miles

PROPOSED FUTURE LAND USE MAP AMENDMENT 1616 W Bertona St

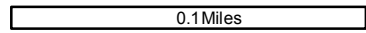


- Urban Center
- Hub Urban Village
- Residential Urban Village
- Manufacturing / Industrial Center
- Single Family Residential Areas
- Multi-Family Residential Areas
- Commercial / Mixed Use Areas
- Industrial Areas
- Major Institutions
- City-Owned Open Space

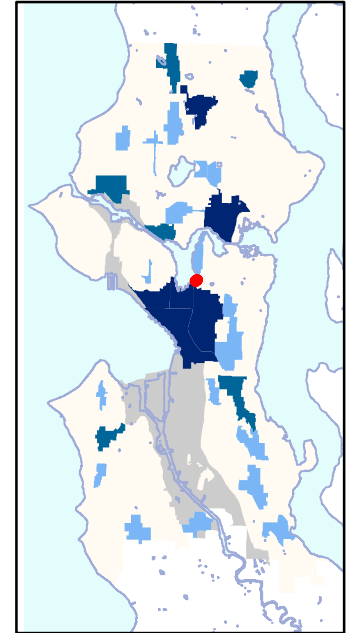
Prepared by:
 Seattle City Council Central Staff
 No warranties of any sort, including accuracy, fitness or merchantability accompany this product.

Copyright, City of Seattle
 July 13, 2016

All rights reserved



PROPOSED FUTURE LAND USE MAP AMENDMENT 1208 Eastlake Ave E



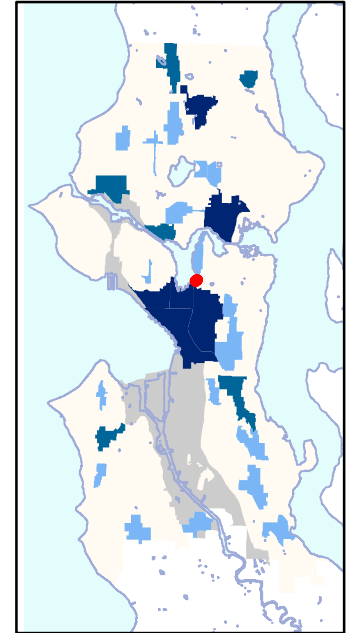
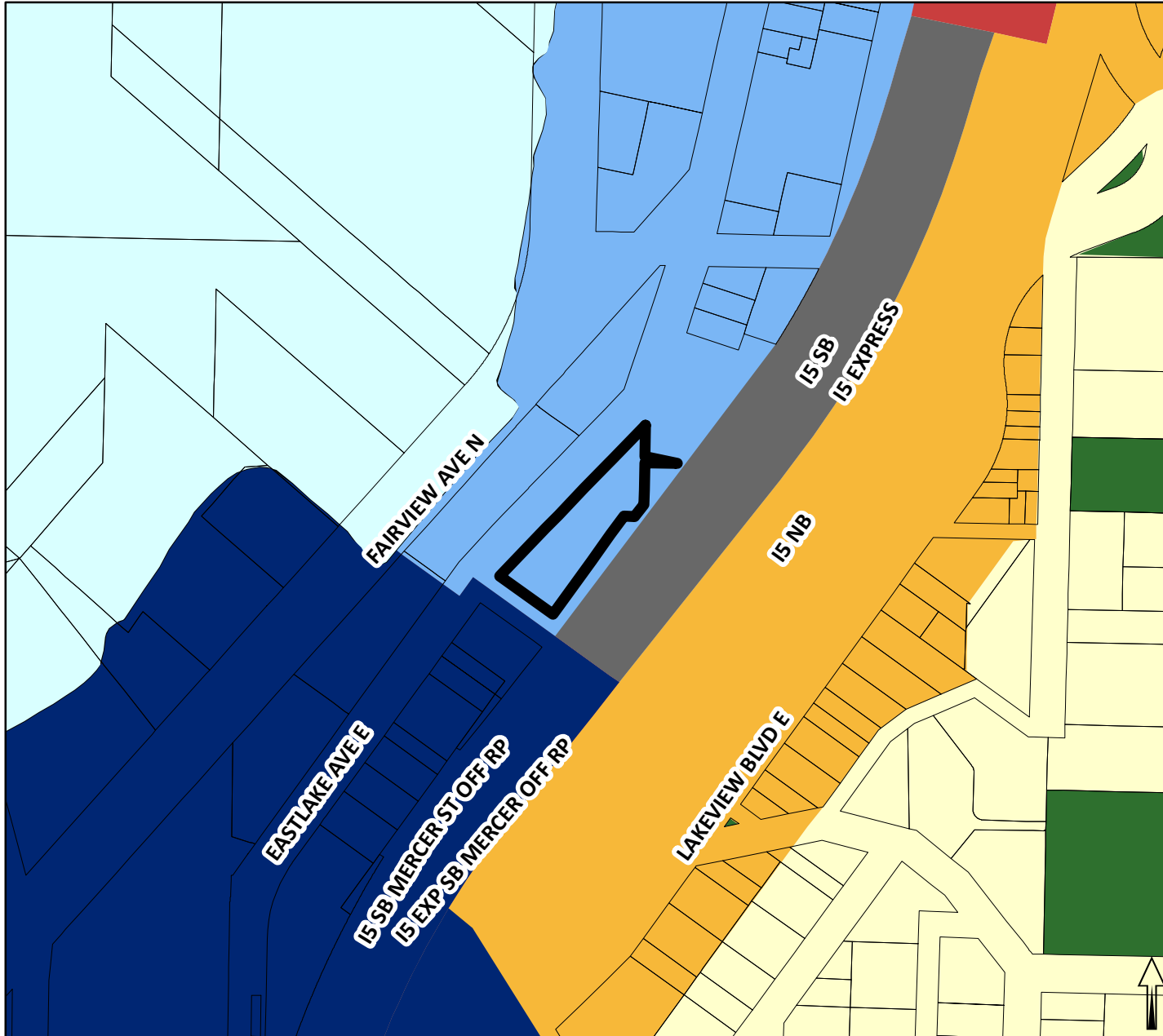
Prepared by:
Seattle City Council Central Staff
No warranties of any sort, including
accuracy, fitness or merchantability
accompany this product.

Copyright, City of Seattle
July 13, 2016

All rights reserved

0.1 Miles

PROPOSED FUTURE LAND USE MAP AMENDMENT 1208 Eastlake Ave E



- Urban Center
- Hub Urban Village
- Residential Urban Village
- Manufacturing / Industrial Center
- Single Family Residential Areas
- Multi-Family Residential Areas
- Commercial / Mixed Use Areas
- Industrial Areas
- Major Institutions
- City-Owned Open Space

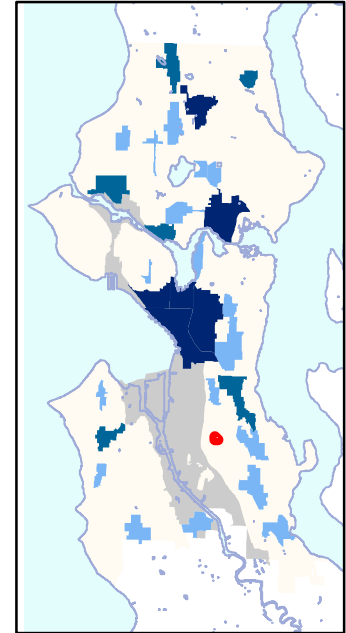
Prepared by:
 Seattle City Council Central Staff
 No warranties of any sort, including accuracy, fitness or merchantability accompany this product.

Copyright, City of Seattle
 July 13, 2016

All rights reserved

0.1 Miles

PROPOSED FUTURE LAND USE MAP AMENDMENT 125 S Columbian Way



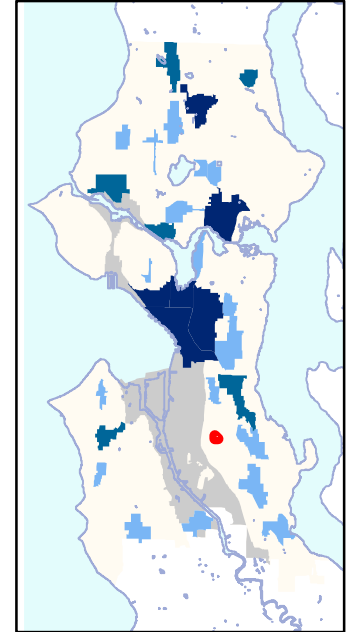
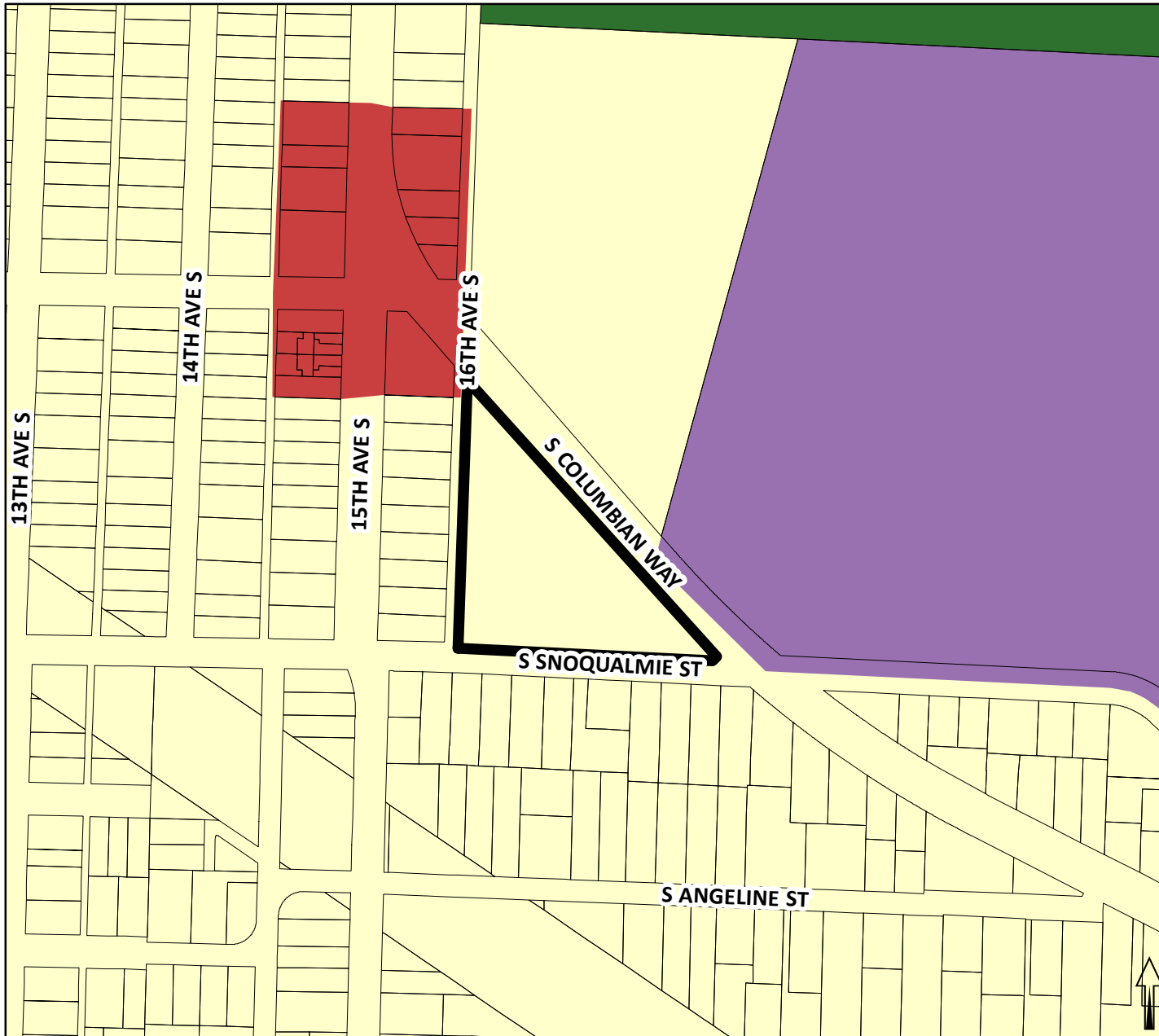
Prepared by:
Seattle City Council Central Staff
No warranties of any sort, including
accuracy, fitness or merchantability
accompany this product.

Copyright, City of Seattle
July 13, 2016

All rights reserved

0.1 Miles

PROPOSED FUTURE LAND USE MAP AMENDMENT 125 S Columbian Way



- Urban Center
- Hub Urban Village
- Residential Urban Village
- Manufacturing / Industrial Center
- Single Family Residential Areas
- Multi-Family Residential Areas
- Commercial / Mixed Use Areas
- Industrial Areas
- Major Institutions
- City-Owned Open Space

Prepared by:
 Seattle City Council Central Staff
 No warranties of any sort, including
 accuracy, fitness or merchantability
 accompany this product.

Copyright, City of Seattle
 July 13, 2016

All rights reserved

