

# Civil Rights, Utilities, Economic Development and Arts Committee

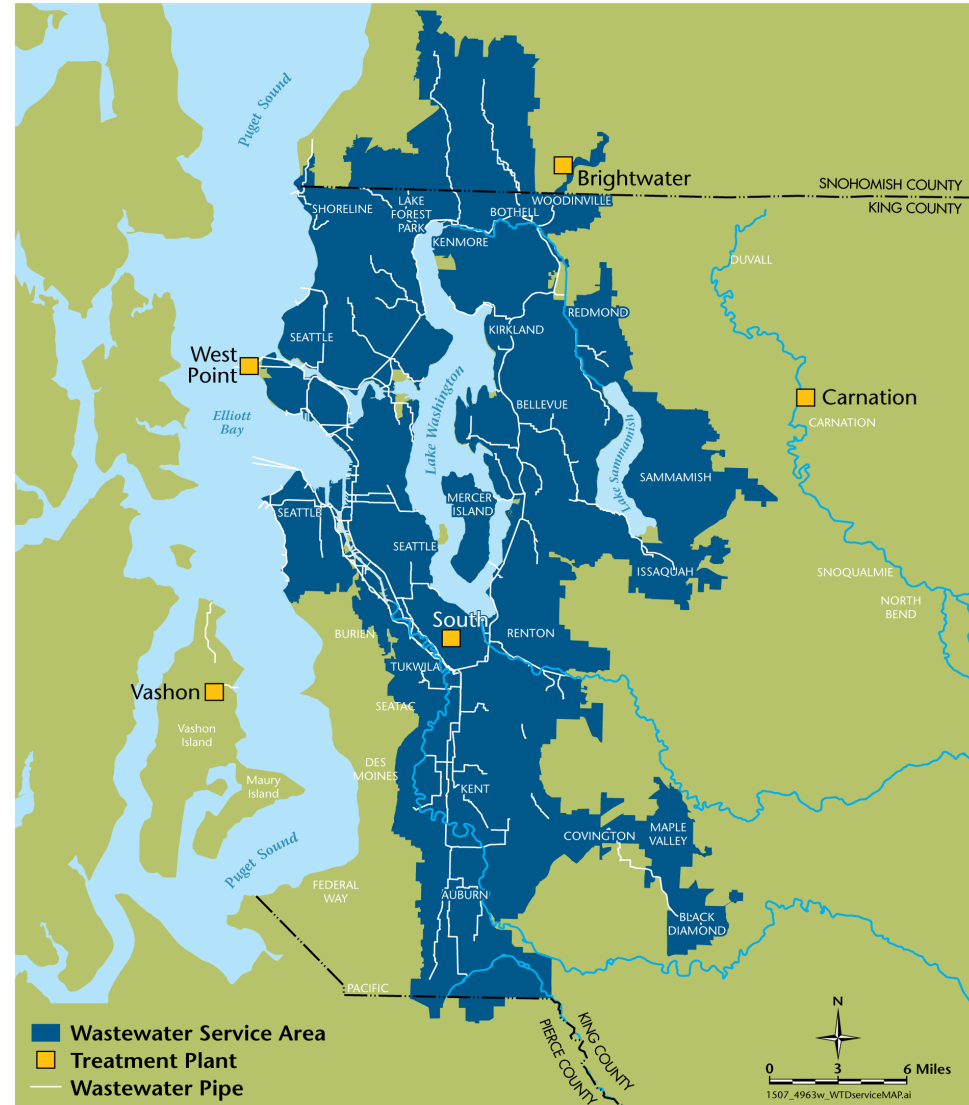
## **King County Grant to Seattle Public Utilities**

*August 9, 2016*



# King County WaterWorks Grant Program

- Support investments in projects that improve water in clean water quality in King County WTD service area.
- \$2 million in 2015-16 biennium
- 0.75 percent of annual King County WTD budget

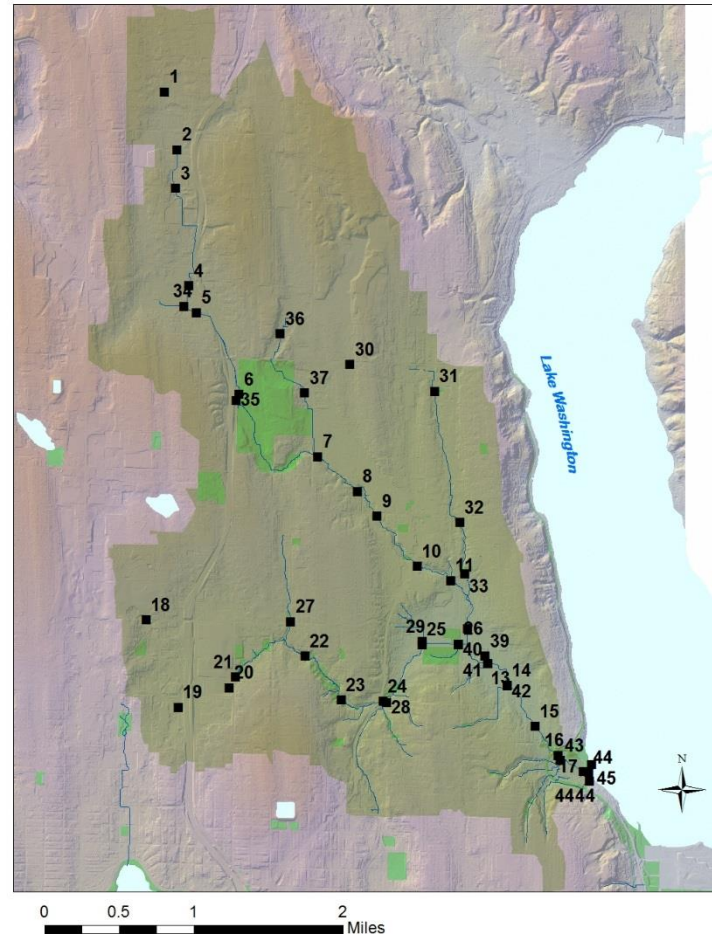


# Two Grants to SPU

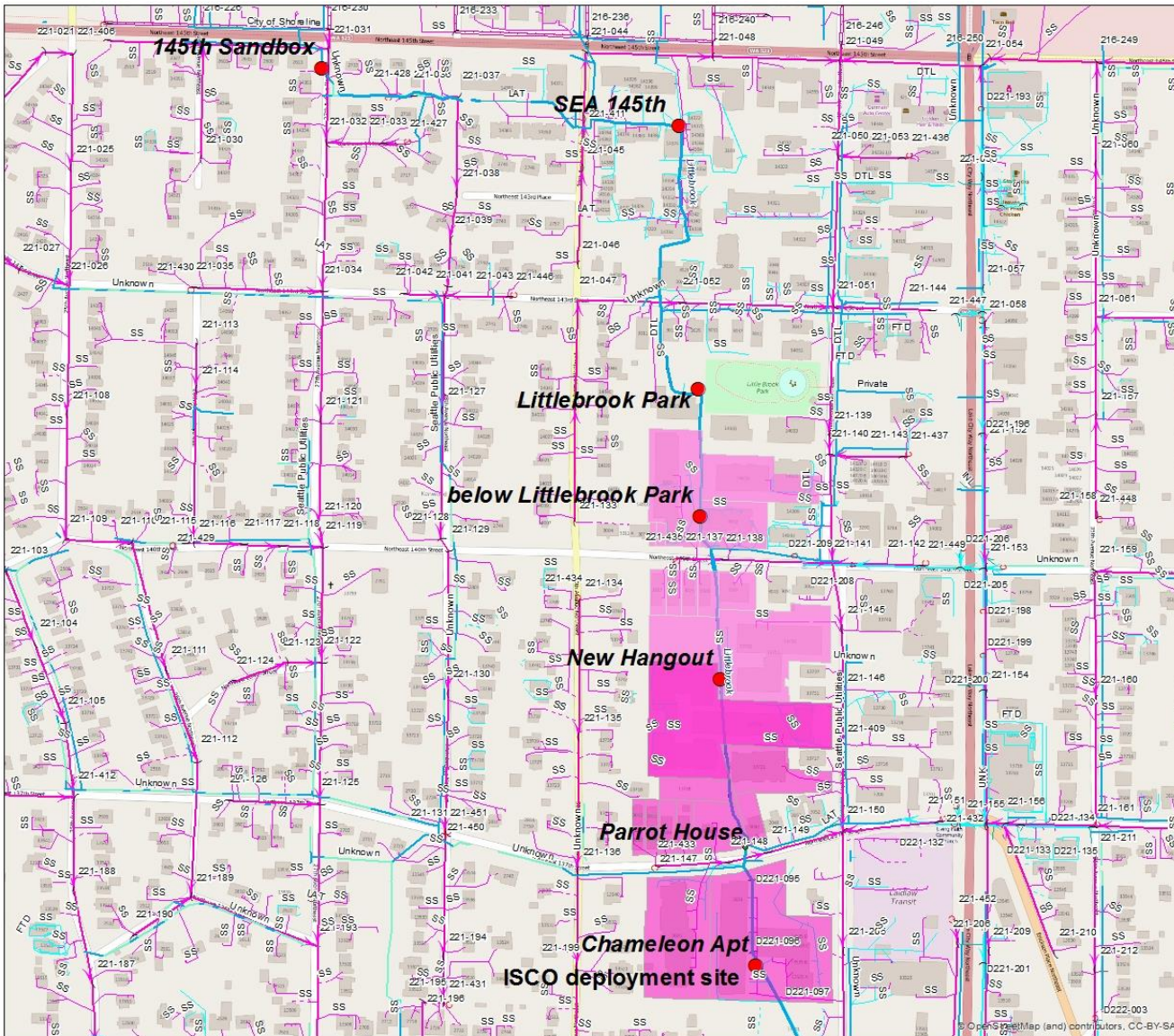
- \$320,000 and \$240,000 to identify and eliminate sources of fecal contamination.
  - Surface waters within Seattle
  - Watersheds draining to Seattle
  - Potential annexation areas

# Temperature and Conductivity as Surrogates

24 1 hour  
composite  
samples  
analyzed for  
*E. coli* and  
*Bacteroides*



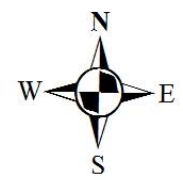
three teams sampled each site  
in the AM (8-noon) and PM (1-5)  
repeated on five sampling events

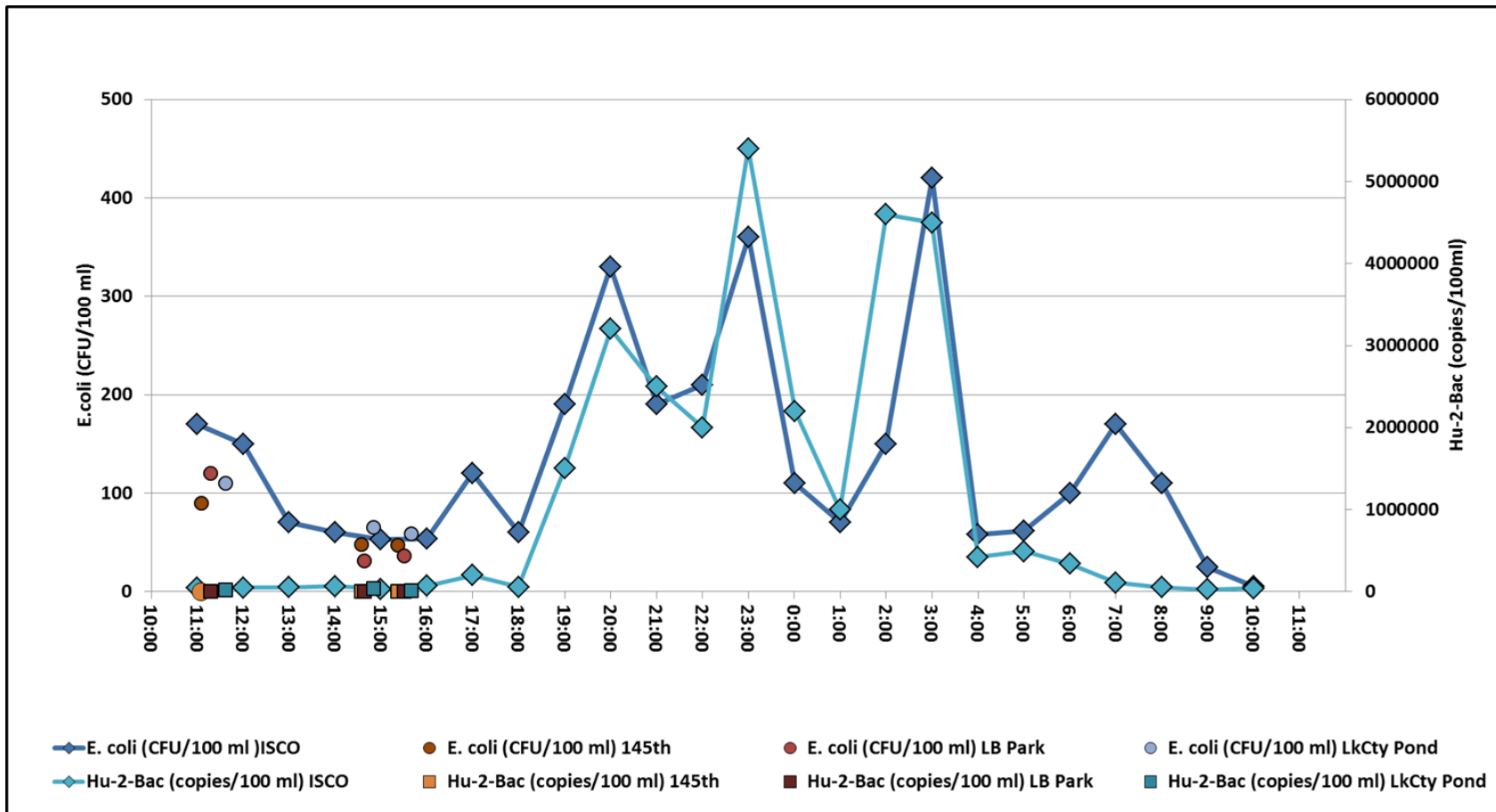


# Legend

thermistor deployment site

- 
- suspect\_parcels
- ThorntonCreek
- Culvert
- Ditch
- SPU Drainage Main
- SPU Sanitary Main
- SPU Combined Main
- King County Drainage Main
- King County Sewer Main
- Private Drainage Main
- Private Sanitary Main
- Private Combined Main





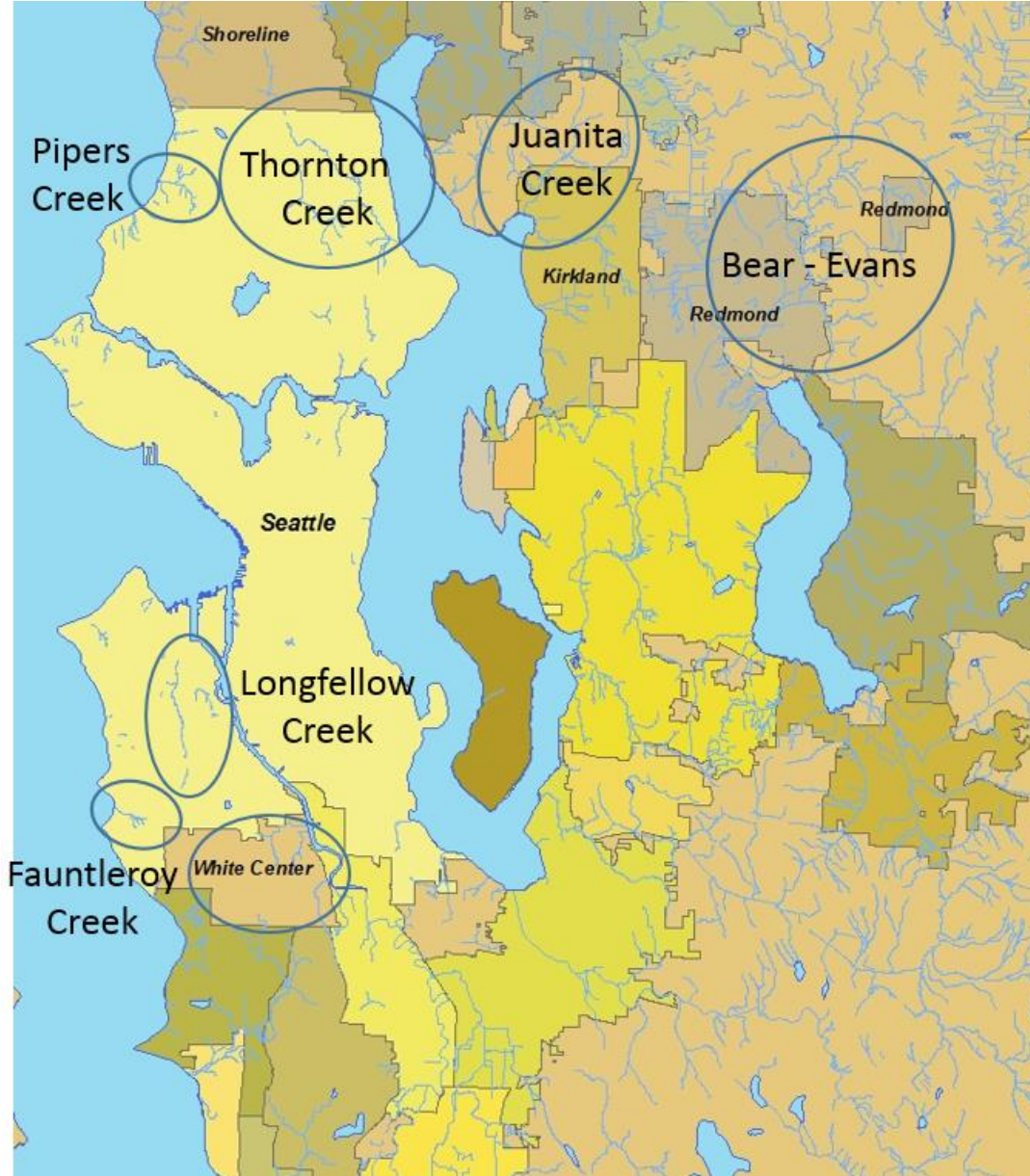
# Potential sewer break– South Fork of Thornton Creek



# Cross Connection – Littlebrook Creek



# Multi-Watershed Investigation



# Proposed Legislation:

Authorizes the SPU Director to accept two grants from King County and execute necessary grant agreements.