

High Point Stairway Deed Acceptance



Council Sustainability and
Transportation Committee
Gretchen Haydel and Lorelei Williams
July 7, 2017



Seattle
Department of
Transportation

Our mission, vision, and core values

Mission: deliver a high-quality transportation system for Seattle

Vision: connected people, places, and products

Committed to **5 core values** to create a city that is:

- Safe
- Interconnected
- Affordable
- Vibrant
- Innovative

For **all**

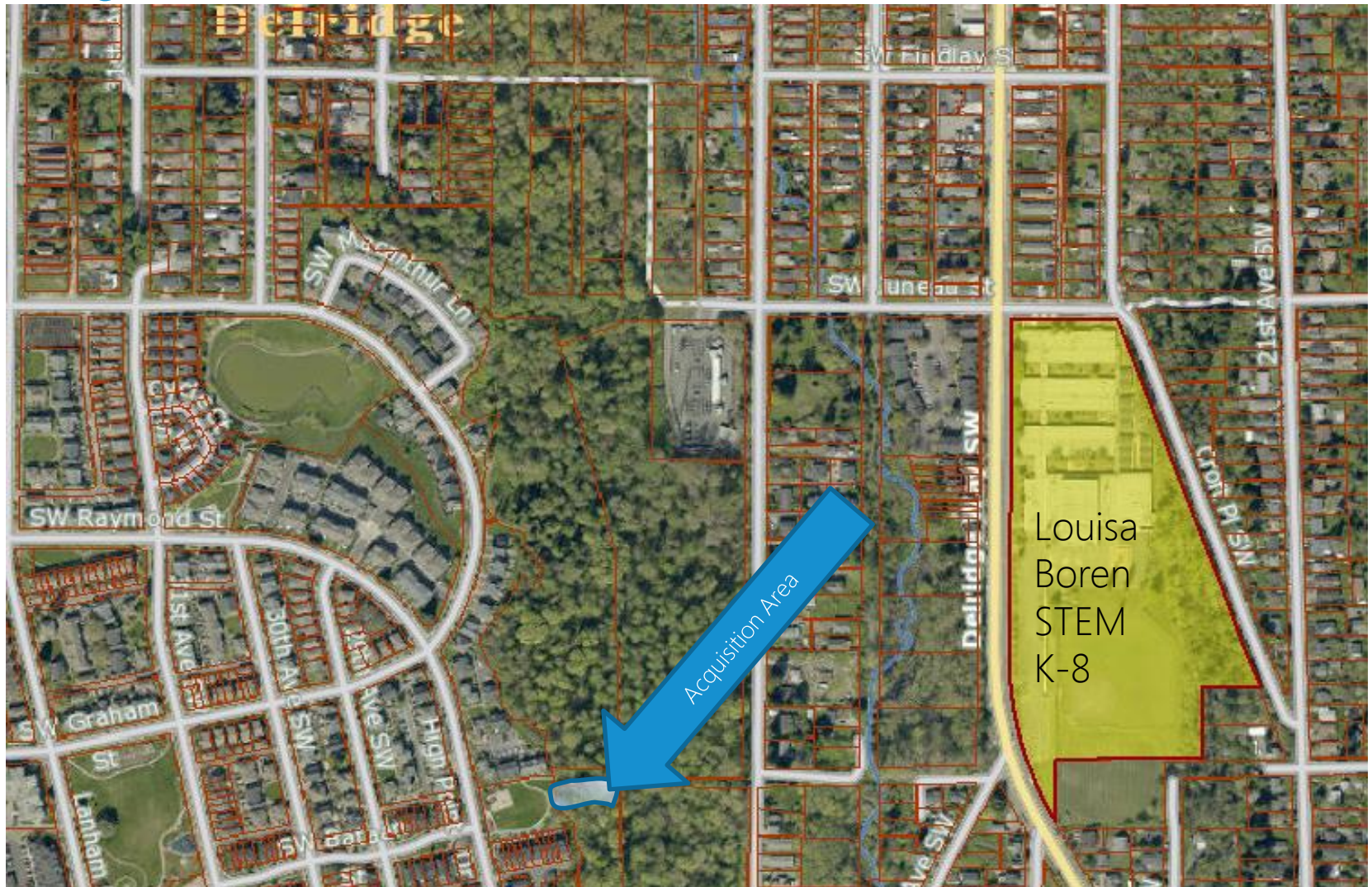
Background

- The Louisa Boren Junior High School, currently known as Louisa Boren STEM K-8, opened in September of 1963 in West Seattle
- Citizens petitioned the City to build a stairway through the wooded hillside leading to the school due to safety concerns
- The City built the stairway in 1970

Background (con't)

- In 2004, a portion of the city-owned stairway on SW Graham St was vacated in connection with the Seattle Housing Authority's High Point redevelopment project
- As a result of the project, the Seattle Housing Authority (SHA) took over maintenance responsibility
- SHA no longer has funding to maintain the stairway

Project Area



Acquisition Area



Existing Condition

Characteristics of stairway:

- Constructed of reinforced concrete
- 198 feet long
- Consists of 6 landings
- Includes a pipe railing and a drain gutter

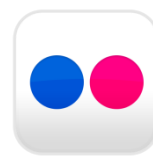
Proposal

- City acceptance of the approximately 8,800 square feet of stairway property
- Take over maintenance responsibility of the stairway

Questions?

Gretchen.Haydel@seattle.gov | (206) 233-5140

www.seattle.gov/transportation



Seattle
Department of
Transportation