



# ENDING HOMELESSNESS IN LOS ANGELES





1  
County



1  
County

8  
Regions

88  
Cities

4,000  
Square Miles

# WHAT WAS THE CONTEXT BEFORE HOME FOR GOOD?

---



## PROGRAMS VS. SYSTEMS

Lots of pilots, few broad based initiatives or systems



## MANAGING HOMELESSNESS

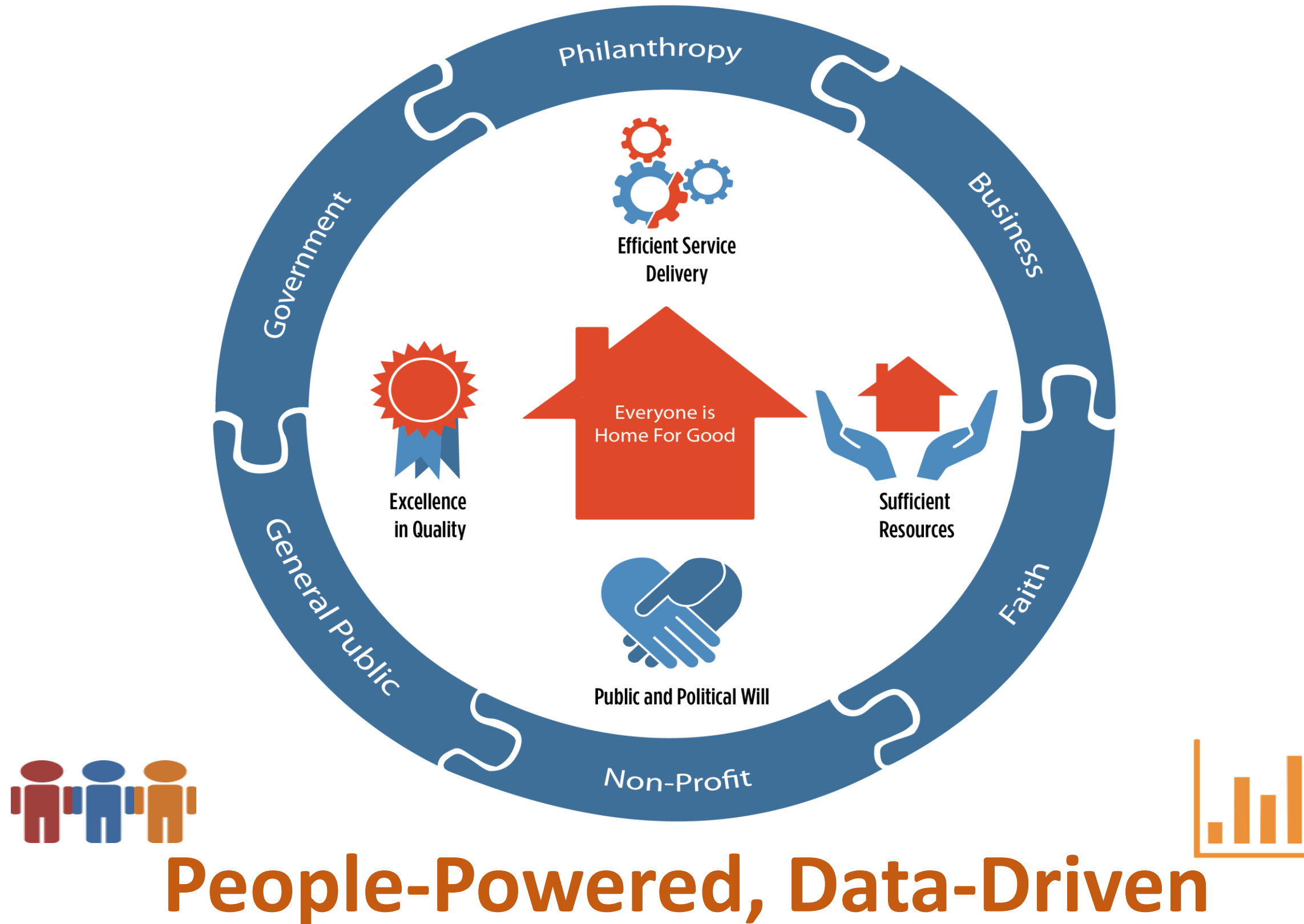
Lack of will for permanent solutions and no clear goals



## DISJOINTED PUBLIC RESOURCES

Smaller-scale, uncoordinated investment by City & County;  
Political tensions

# The Home For Good Approach





# HOME FOR GOOD

Ending Chronic & Homelessness by 2016

BUSINESS LEADERS TASK FORCE  
**HOME FOR GOOD**

BUSINESS LEADERS TASK FORCE  
**HOME FOR GOOD**

BUSINESS LEADERS TASK FORCE  
**HOME FOR GOOD**



# Motivation for the Home For Good Funders Collaborative

- Disjointed and small-scale public & private investments
- Multiplicity of outcomes
- Threat of decreased federal funds
- Inspiration from **SEATTLE**

BUSINESS LEADERS TASK FORCE  
HOME FOR GOOD

BUSINESS LEADERS TASK FORCE  
HOME FOR GOOD

BUSINESS LEADERS TASK FORCE  
HOME FOR GOOD

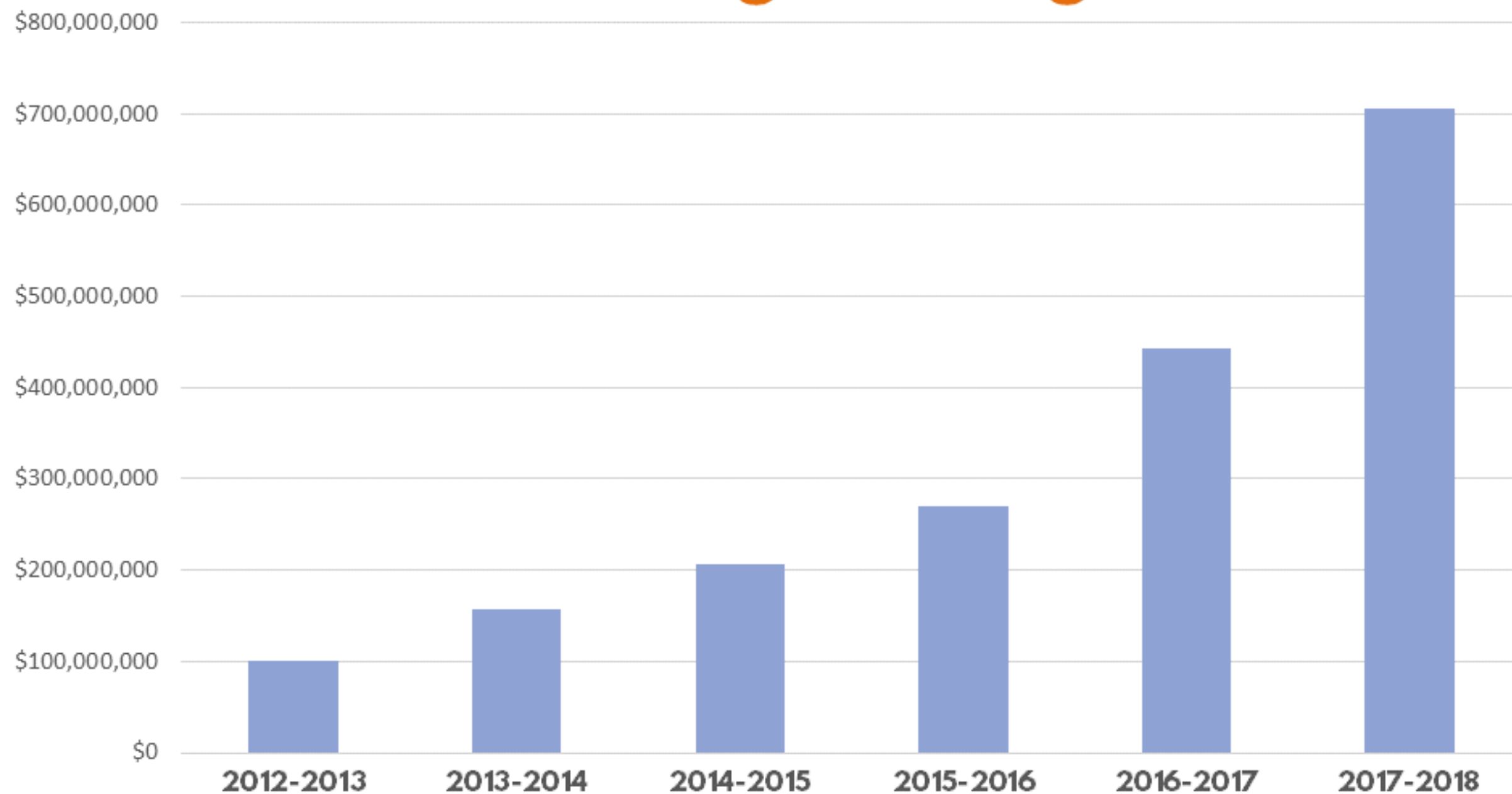
# Launching a Funders Collaborative

- Vision for collaboration & leverage
- Goal: \$5M philanthropic, \$35M public
- Conrad N. Hilton Challenge Grant
- Big Tent
- Question of the Day
- Take Action (6-month timeline)





# Growing Leverage



■ Private ■ Public



Bank of America.



**HARBOR FREIGHT TOOLS**  
Giving Back

Citi Foundation



PASADENA

CONRAD N.



FOUNDATION



The  
California Wellness  
Foundation  
*Grantmaking for a Healthier California*

**JPMorganChase**



**ballmer**  
GROUP

VA GREATER LOS ANGELES  
HEALTHCARE SYSTEM



A Division of VA Desert Pacific  
Healthcare Network



THE CARL & ROBERTA DEUTSCH  
FOUNDATION



**KAISER PERMANENTE®**



A Division of VA Desert Pacific  
Healthcare Network



**CEDARS-SINAI®**

**WELLS  
FARGO**

The  
California  
Endowment



**United  
Way**  
GREATER LOS ANGELES



**FUNDING PARTNERS**





## ALIGNED AND POOLED COLLABORATIVE FUNDERS *(2011-Present)*

### PRIVATE FUNDERS

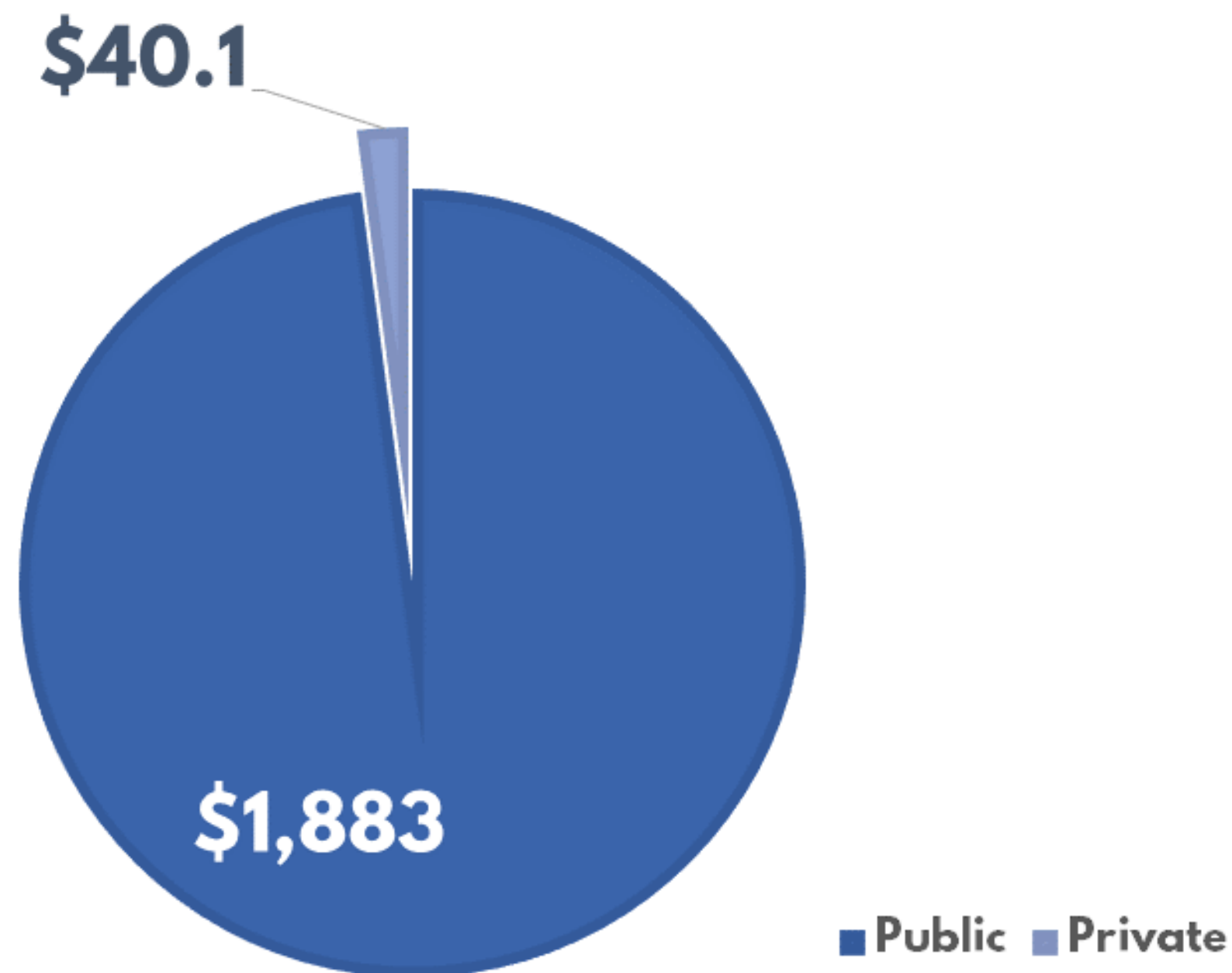
Aileen Getty Foundation  
Annenberg Foundation  
Anthony & Jeanne Pritzker Family Foundation  
Ballmer Group  
California Apartment Association  
California Community Foundation  
Cedars-Sinai  
City National Bank  
Conrad N. Hilton Foundation  
CSH  
Downtown Business Association  
Enterprise Community Partners  
Goldman Sachs  
Harbor Freight Tools  
J.P. Morgan Chase  
Jewish Community Foundation  
Kaiser Permanente  
Mayor's Fund for Los Angeles  
Pacific Western Bank  
Penta Group  
Real Change Movement  
Snak King Corporation  
Susan & Eric Smidt/Harbor Freight Tools Foundation  
The California Endowment  
The Carl and Roberta Deutsch Foundation  
The Reissa Foundation  
UniHealth Foundation  
United Way of Greater Los Angeles  
Wells Fargo Foundation  
W.M. Keck Foundation  
Weingart Foundation

### PUBLIC FUNDERS

City of Bellflower  
City of Burbank  
City of Carson  
City of Culver City  
City of Lynwood  
City of Los Angeles  
City of Norwalk  
City of Pasadena  
City of Pomona  
City of Redondo Beach  
City of Santa Monica  
City of West Hollywood  
Corporation for National & Community Service  
County of Los Angeles  
Housing Authority City of Los Angeles  
Housing Authority County of Los Angeles  
L.A. City Council, CD 14  
L.A. County Board of Supervisors, SD 2  
L.A. County Board of Supervisors, SD 3  
L.A. County Board of Supervisors, SD 4  
L.A. County Department of Health Services  
L.A. County Department of Mental Health  
L.A. County Department of Public Health  
L.A. Homeless Services Authority  
L.A. Housing and Community Investment Dept.  
U.S. Department of Housing and Urban Development  
V.A. Greater Los Angeles Healthcare System

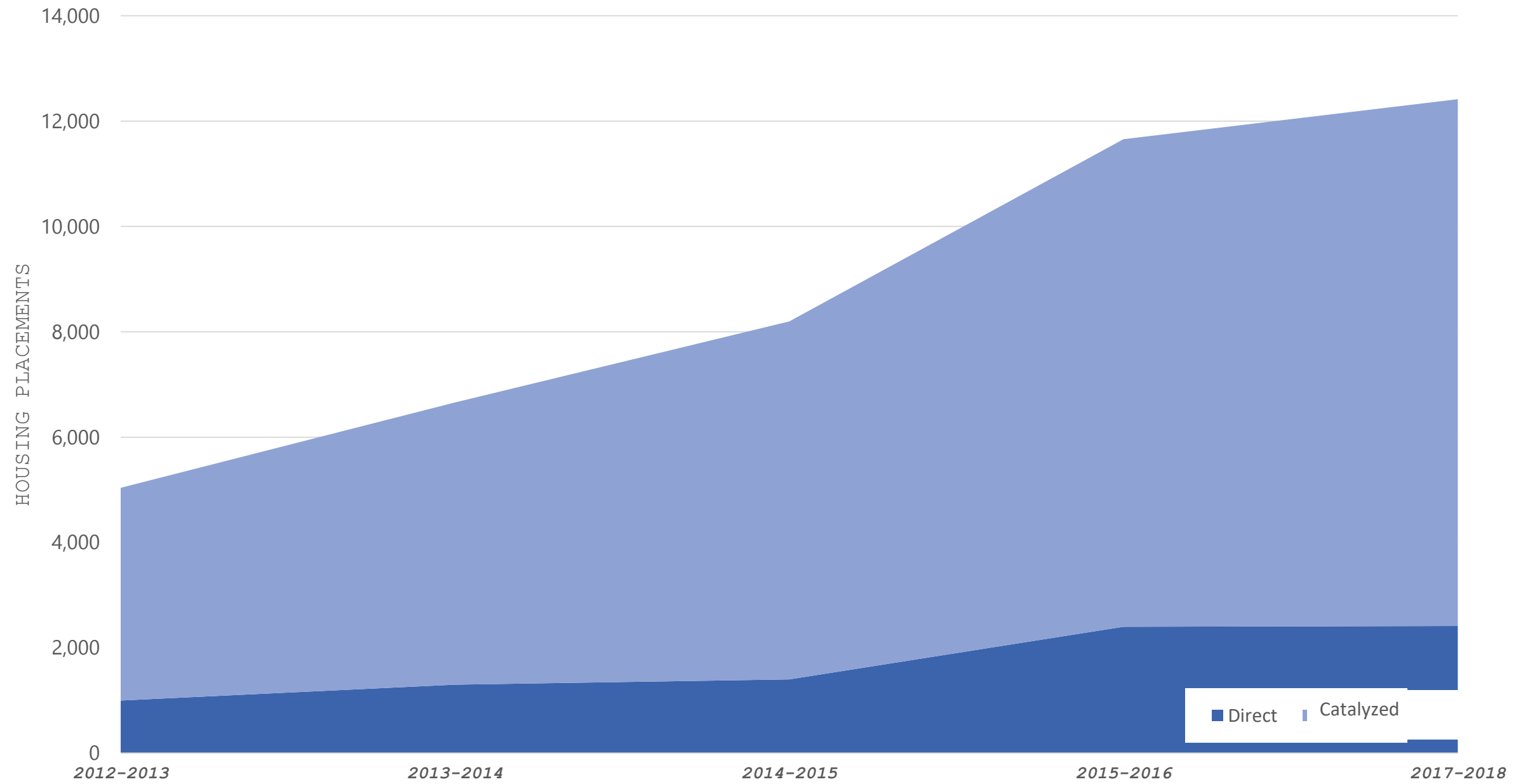
# Cumulative Leverage

(in \$ millions)

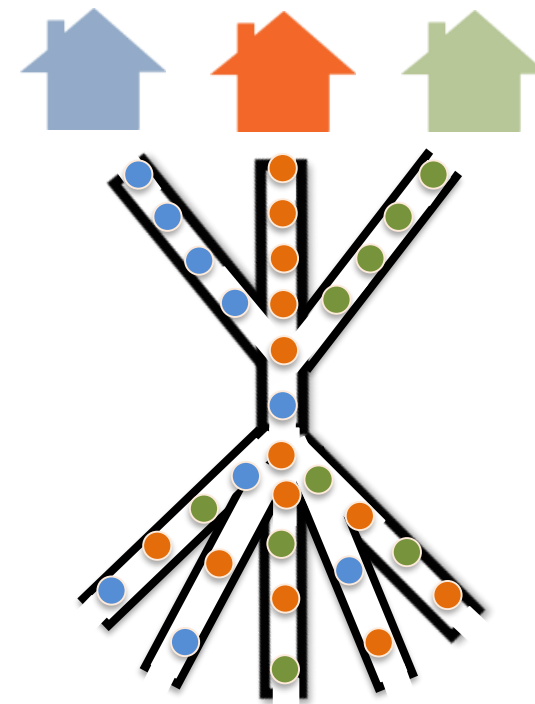
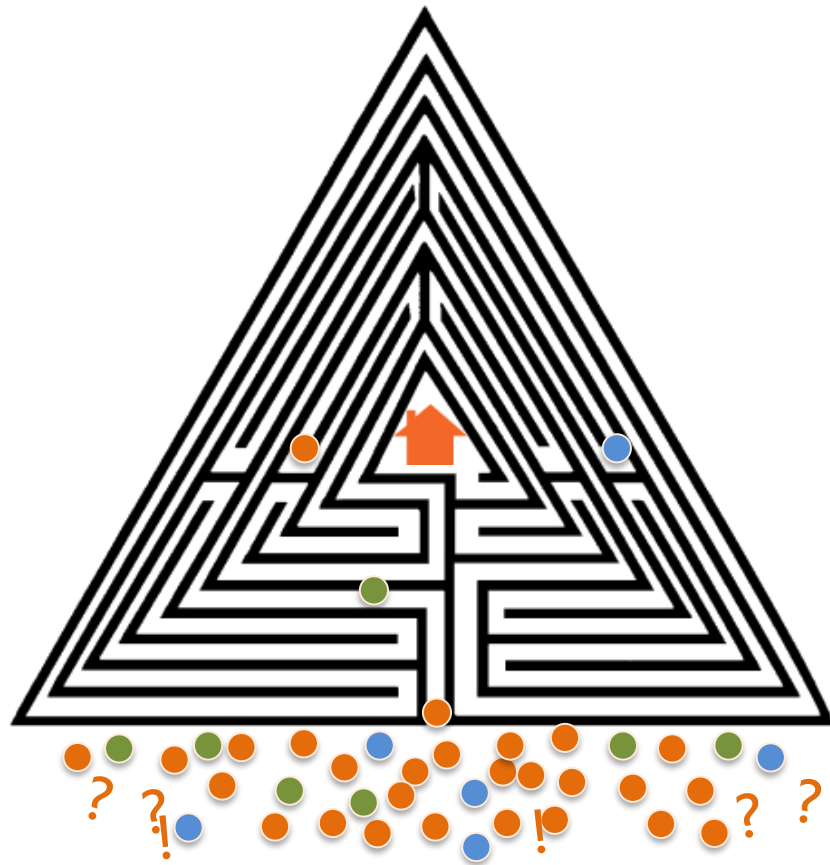




# Housing Placement



# Coordinated Entry System



- Developed ground-up
- One database
- Multiple interventions
- Multiple populations











# Housing Placement

## Chronically Homeless Persons Placed into Housing

**2,683** Chronically homeless persons placed into permanent housing in 2016

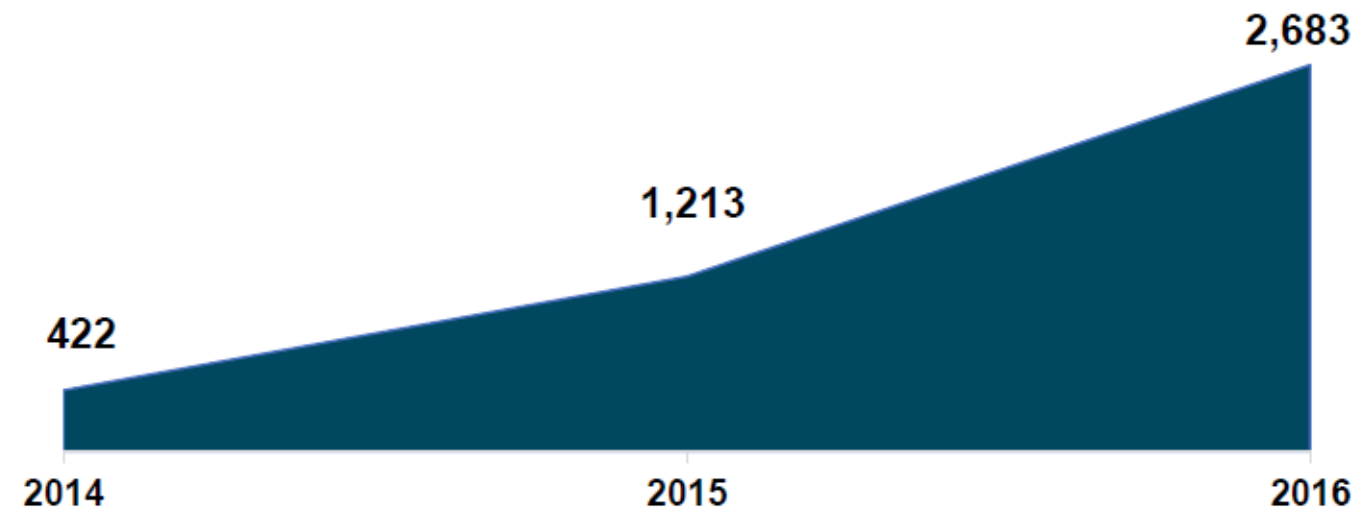
**121%** Increase from 2015

**536%** Increase from 2014

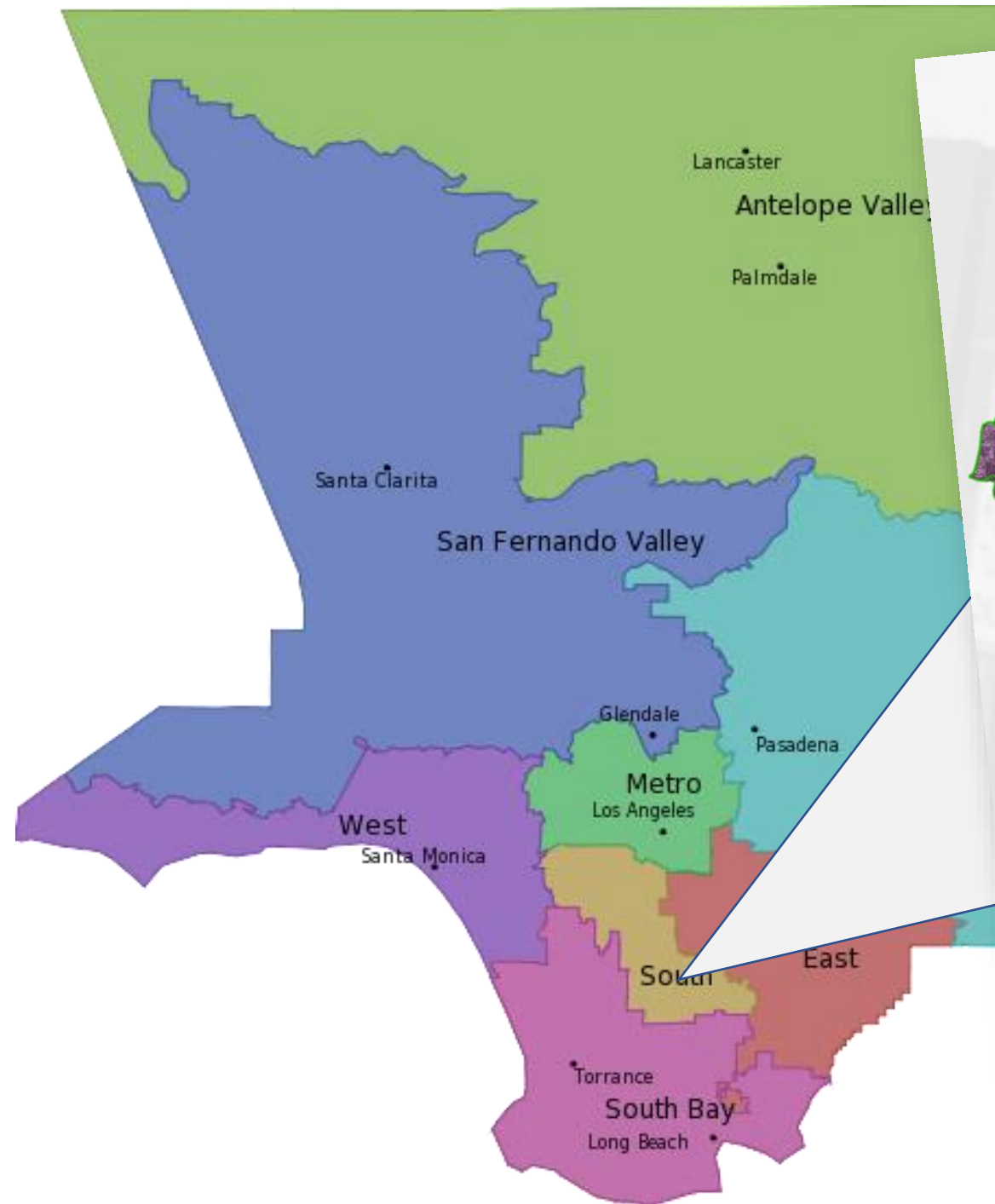
**Geography:**  
LA CoC

**Population:**  
Chronically  
Homeless

Chronically Homeless Persons Placed into Housing  
Los Angeles Continuum of Care, 2014 - 2016



LA CoC excludes Glendale, Pasadena, and Long Beach CoCs





# GROWING PUBLIC & POLITICAL WILL





# HomeWalk

85,000+ Walkers over 11 years





# Approved Strategies to Combat Homelessness



Los Angeles County  
Homeless Initiative



February 2016

Los Angeles County  
Chief Executive Office



## COMPREHENSIVE HOMELESS STRATEGY

### Comprehensive Homeless Strategy



CITY OF LOS ANGELES







# #EVERYONEIN

COUNT ME IN

COUNT ME IN

COUNT ME IN



Los Angeles County

COUNT ME IN

COUNT ME IN

ARE YOU IN?

#EVERYONEIN



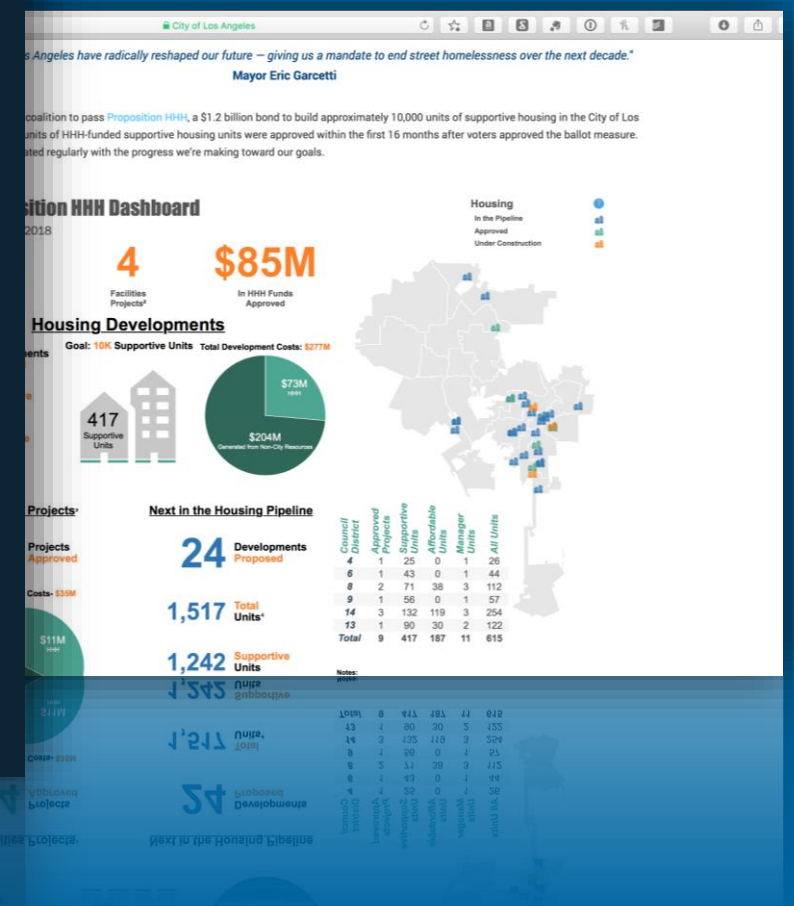
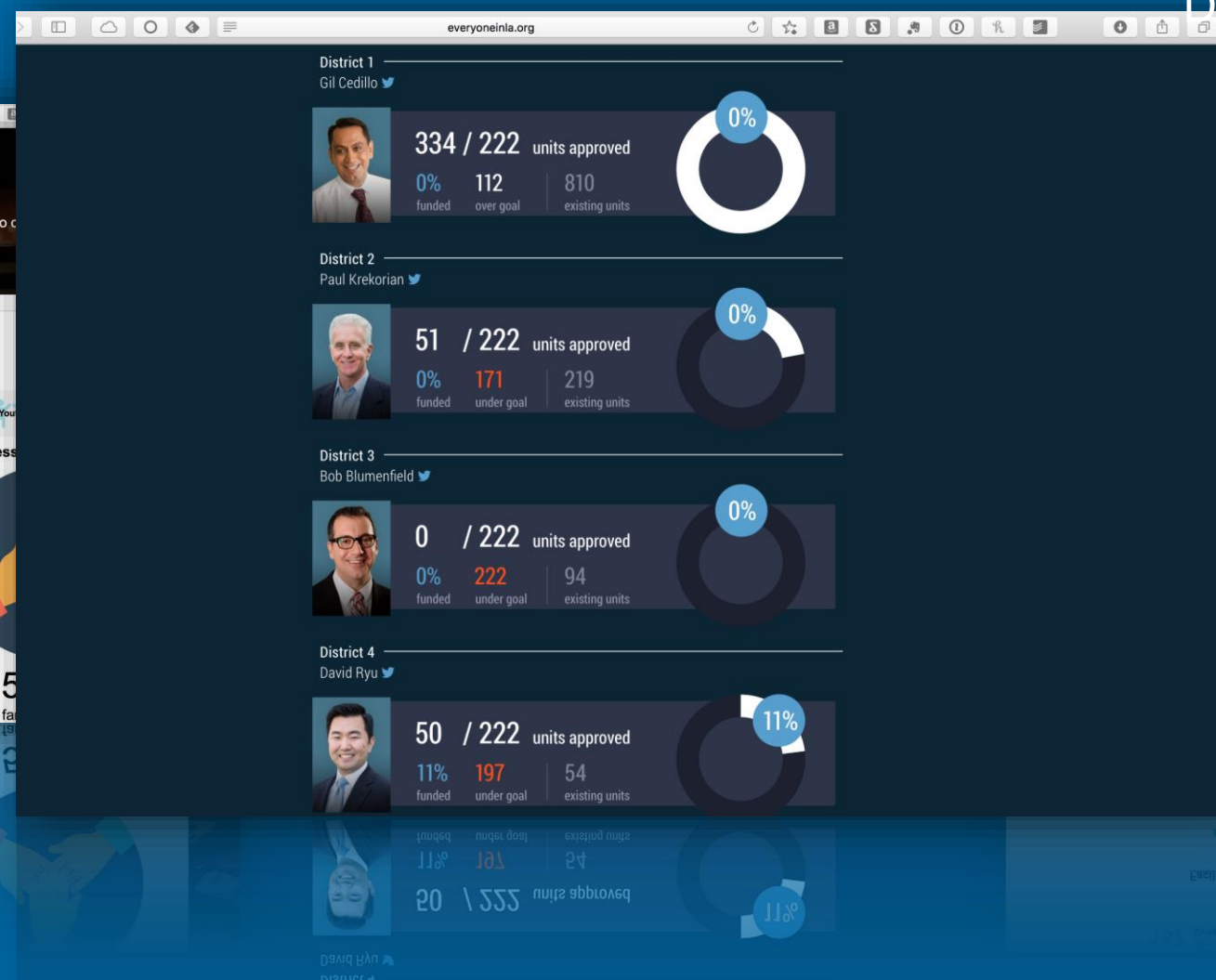
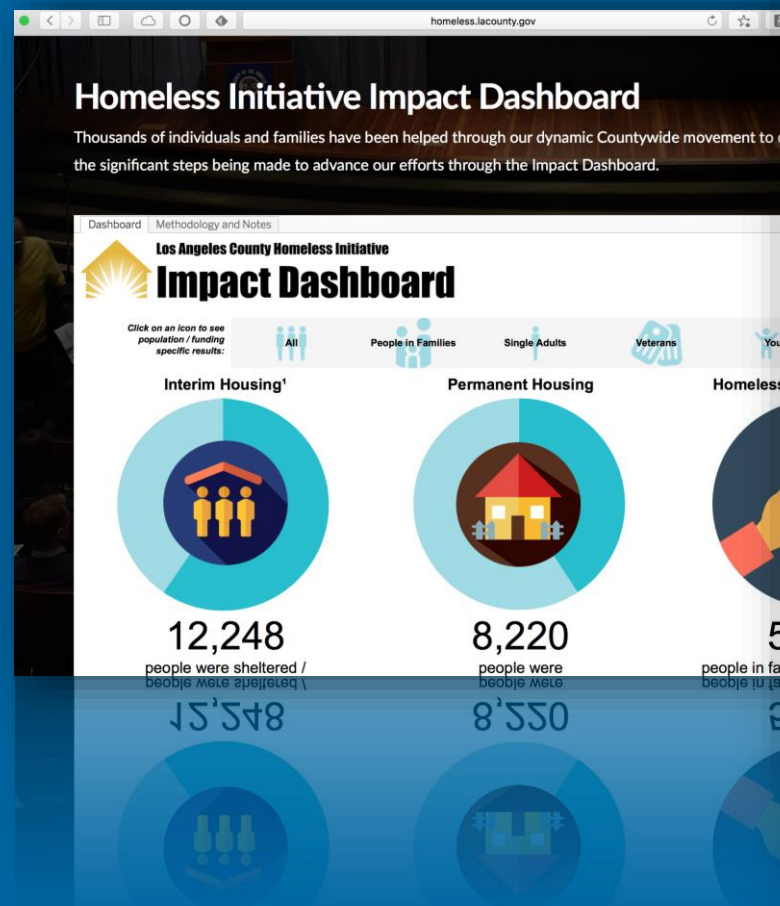


# Track the Progress.

COUNTY OF L.A.  
MEASURE H  
DASHBOARD

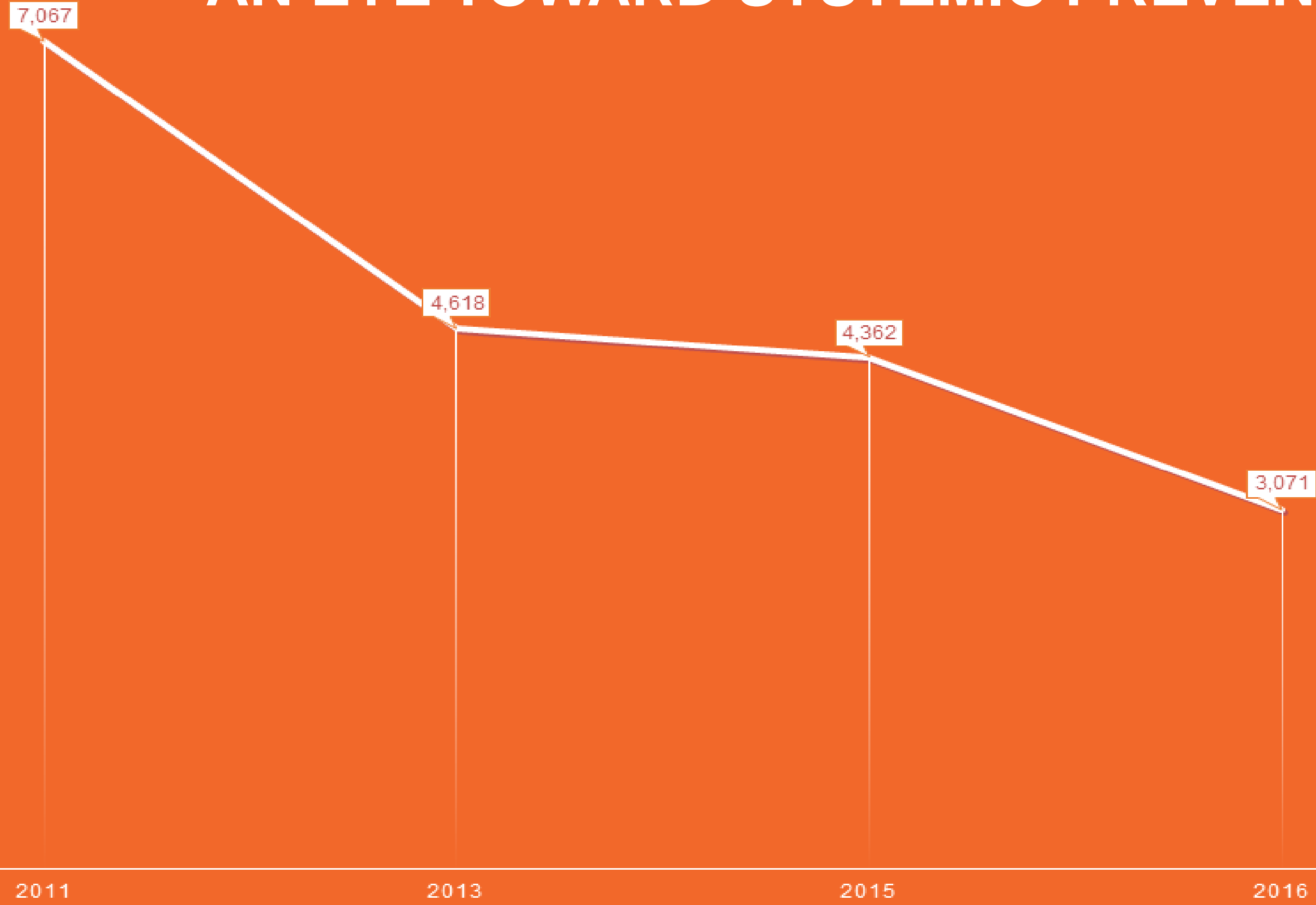
EVERYONE IN  
SUPPORTIVE HOUSING  
CITY OF L.A. / 222 TRACKER

CITY OF L.A.  
PROP HHH  
DASHBOARD



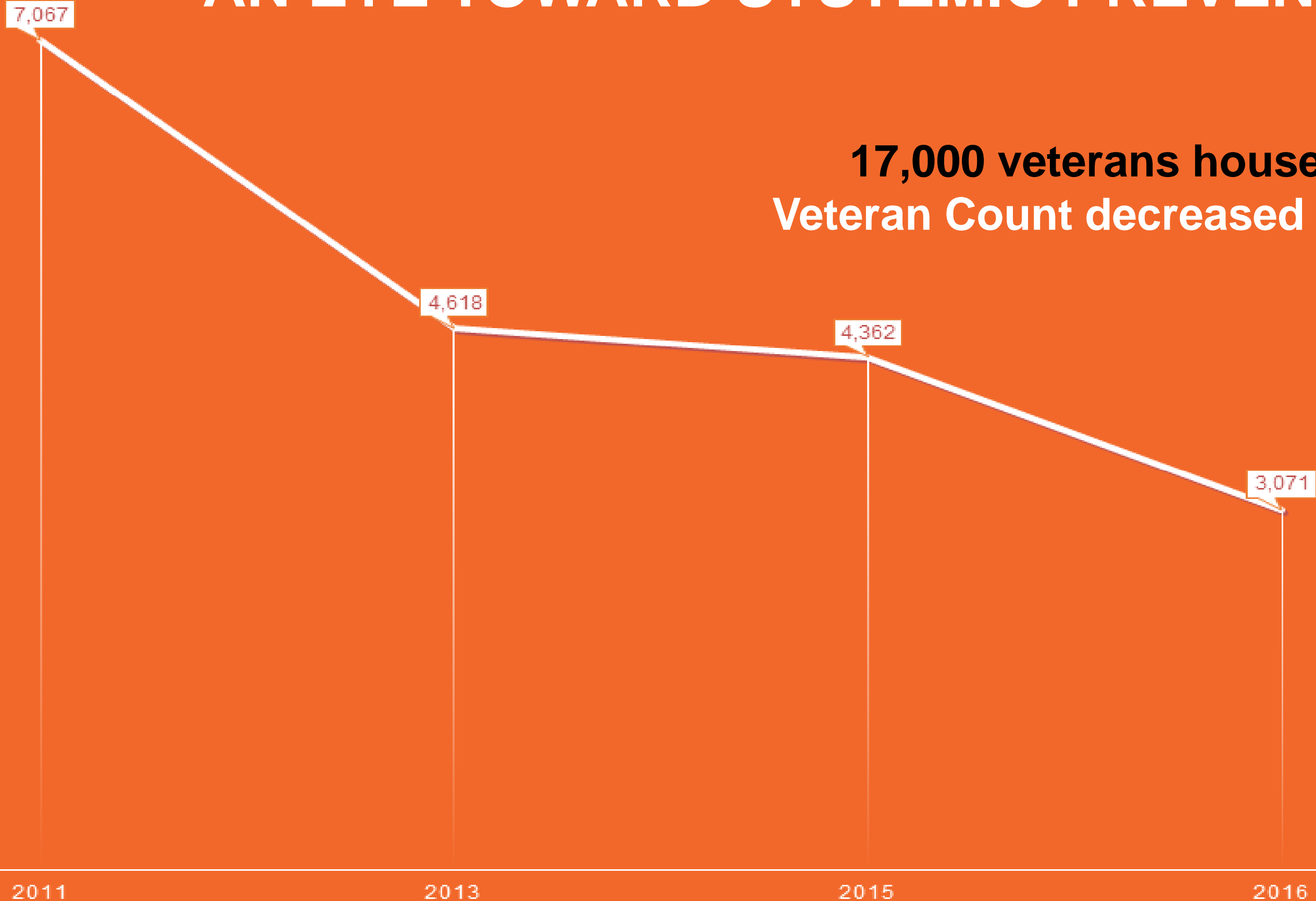


# AN EYE TOWARD SYSTEMIC PREVENTION



# AN EYE TOWARD SYSTEMIC PREVENTION

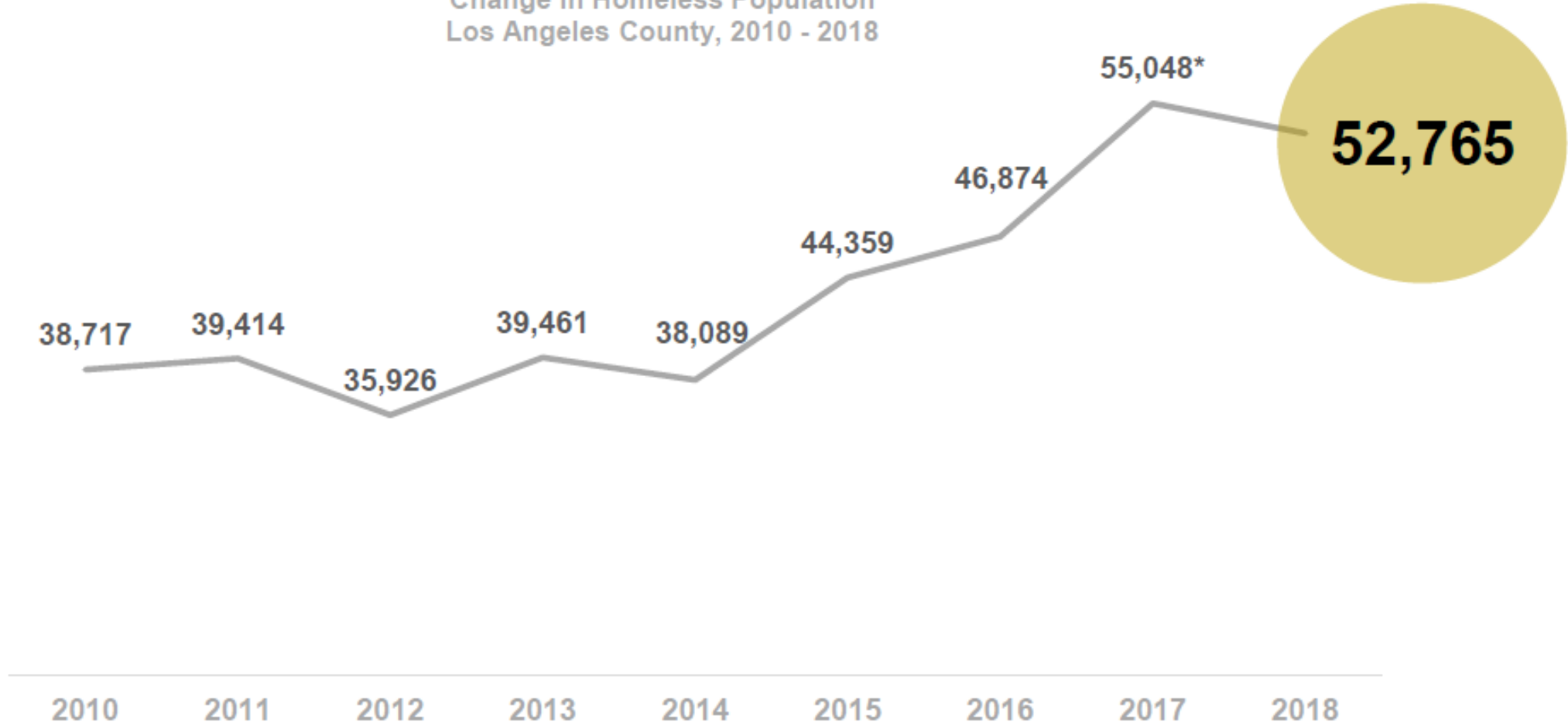
**17,000 veterans housed**  
**Veteran Count decreased 3,996**



For the first time in 4 years  
homelessness decreased

AN EYE TOWARD  
SYSTEMIC  
PREVENTION

Change in Homeless Population  
Los Angeles County, 2010 - 2018

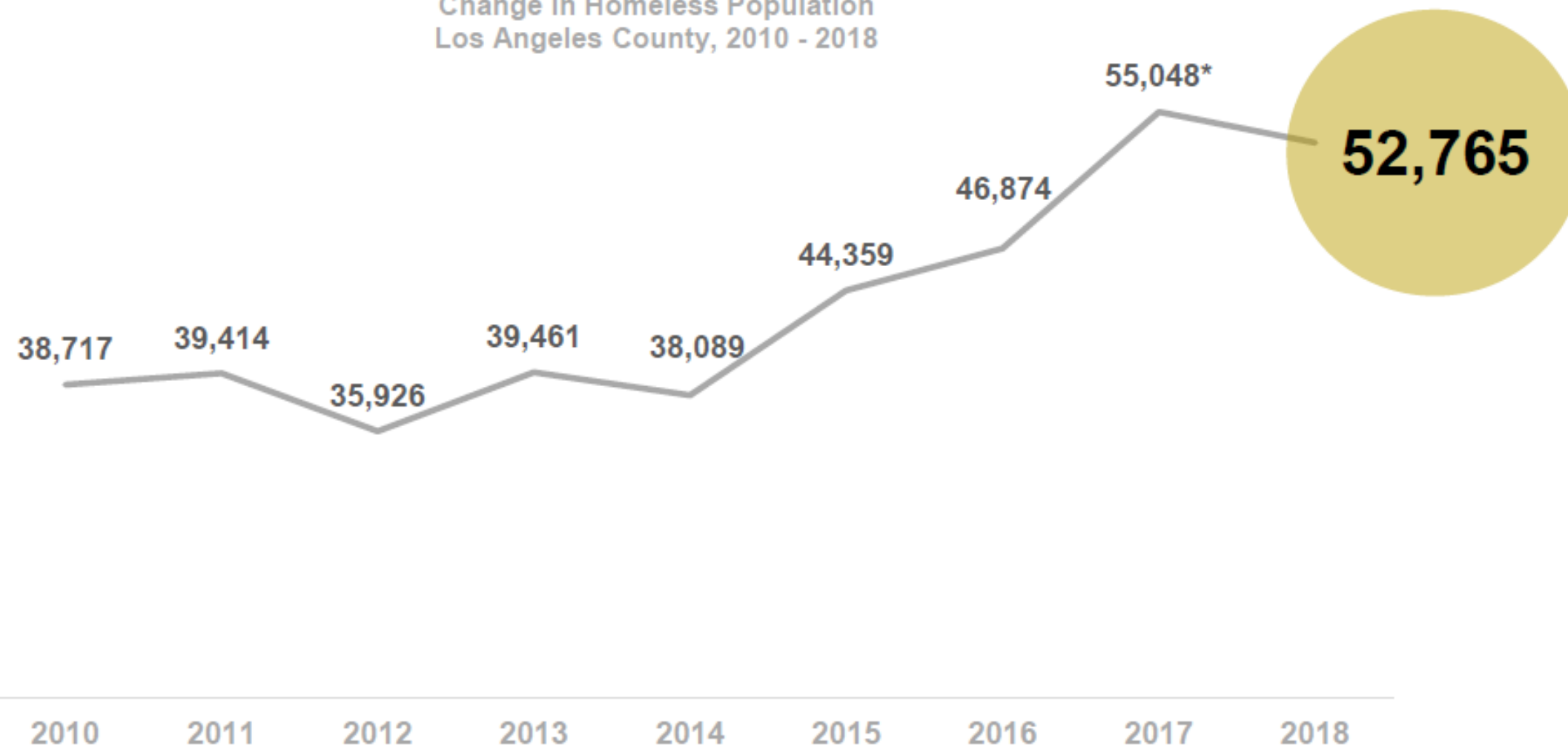




# For the first time in 4 years homelessness decreased

## AN EYE TOWARD SYSTEMIC PREVENTION

Change in Homeless Population  
Los Angeles County, 2010 - 2018



**16,500 people  
housed**

**Count  
decrease: 2,283**





**#EVERYONEIN**

## **For More Information:**

**Christine Margiotta**

Executive Director

Social Venture Partners LA

[cmargiotta@svpla.org](mailto:cmargiotta@svpla.org)

**Chris Ko**

Director, Home For Good  
United Way of Greater LA

[cko@unitedwayla.org](mailto:cko@unitedwayla.org)