



# SEATTLE CITY COUNCIL

## Legislative Summary

Res 31880

Record No.: Res 31880

Type: Resolution (Res)

Status: Adopted

Version: 1

Ord. no:

In Control: City Clerk

File Created: 03/12/2019

Final Action: 04/26/2019

**Title:** A RESOLUTION recognizing the efforts of the North Delridge community to prepare an action plan for their community; identifying a work program to implement the North Delridge Action Plan; and identifying proposed amendments to the Delridge Neighborhood Plan in the Comprehensive Plan for consideration in 2020.

**Notes:**

**Date**  
**Filed with City Clerk:** 4/26/2019

**Mayor's Signature:** 4/26/2019

**Sponsors:** Herbold

**Vetoed by Mayor:**

**Veto Overridden:**

**Veto Sustained:**

**Attachments:** Att A - North Delridge Action Plan, Att B - North Delridge Action Plan Priority Actions v2, Att C - Delridge Neighborhood Plan Amendments

**Drafter:** Emilia.Sanchez@seattle.gov

**Filing Requirements/Dept Action:**

### History of Legislative File

Legal Notice Published:

☐ Yes

☐ No

Version:	Acting Body:	Date:	Action:	Sent To:	Due Date:	Return Date:	Result:
1	City Clerk	03/13/2019	sent for review	Council President's Office			
	<b>Action Text:</b> The Resolution (Res) was sent for review. to the Council President's Office						
	<b>Notes:</b>						
1	Council President's Office	04/12/2019	sent for review	Planning, Land Use, and Zoning Committee			
	<b>Action Text:</b> The Resolution (Res) was sent for review. to the Planning, Land Use, and Zoning Committee						
	<b>Notes:</b>						
1	City Council	04/15/2019	referred	Planning, Land Use, and Zoning Committee			
1	Planning, Land Use, and Zoning Committee	04/17/2019	adopt				Pass

Action Text: The Committee recommends that City Council adopt the Resolution (Res).

In Favor: 2 Vice Chair O'Brien, Member Herbold

Opposed: 0

Abstain: 1 Alternate González

1 City Council 04/22/2019 adopted as  
amended

Pass

Action Text: The Motion carried, the Resolution (Res) was adopted as amended by the following vote, and the President signed the Resolution:

Notes: ACTION 1:

Motion was made by Councilmember Herbold, duly seconded and carried, to amend Resolution 31880, Attachment B, by substituting version 2 for version 1.

ACTION 2:

Motion was made and duly seconded to adopt Resolution 31880 as amended.

In Favor: 8 Councilmember Bagshaw, Councilmember González, Council President Harrell, Councilmember Herbold, Councilmember Juarez, Councilmember Mosqueda, Councilmember O'Brien, Councilmember Sawant

Opposed: 0

1 City Clerk 04/24/2019 submitted for Mayor  
Mayor's signature

1 Mayor 04/26/2019 Signed

1 Mayor 04/26/2019 returned City Clerk

1 City Clerk 04/26/2019 attested by City Clerk

Action Text: The Resolution (Res) was attested by City Clerk.

Notes:

---



**CITY OF SEATTLE**

**RESOLUTION 31880**

A RESOLUTION recognizing the efforts of the North Delridge community to prepare an action plan for their community; identifying a work program to implement the North Delridge Action Plan; and identifying proposed amendments to the Delridge Neighborhood Plan in the Comprehensive Plan for consideration in 2020.

WHEREAS, City Council Resolution 28966, adopted August 1, 1994, established a

Neighborhood Planning Program for The City of Seattle ("City") that identified the Delridge neighborhood as meeting the criteria for being considered a "distressed area" and therefore eligible for participation in neighborhood planning along with designated Urban Centers, Urban Villages, and Manufacturing/Industrial Centers; and

WHEREAS, in 1999, the community completed the Delridge Neighborhood Plan, and through Ordinance 119789 the City adopted the Delridge Neighborhood Plan goals and policies; and

WHEREAS, in 2008 assessments of the Delridge Neighborhood Plan identified strong community support for updating the 1999 Delridge Neighborhood Plan; and

WHEREAS, in 2013, the Department of Planning and Development (DPD) conducted a preliminary assessment of the Delridge area that identified community characteristics, a number of challenges including public health disparities, as well as opportunities for collaborative planning; and

WHEREAS, in 2014, DPD and the Department of Neighborhoods (DON) decided to undertake a community-based planning process in north Delridge; and

WHEREAS, in December 2014, DPD and DON recruited new and long-time community members to form the North Delridge Action Community Team (ACT), and to work in

1 partnership with the City and the community to balance different interests, advise on the  
2 planning process, and work together to oversee the creation and implementation of the  
3 North Delridge Action Plan (“Action Plan”), including proposed amendments to the  
4 Comprehensive Plan’s Delridge Neighborhood Planning Element; and

5 WHEREAS, from 2014 to 2016, DON, DPD, and DPD’s successor department, the Office of  
6 Planning and Community Development (OPCD), conducted significant public outreach  
7 in the North Delridge area, including DON’s Community Liaison program actively  
8 engaging Latinx, Somali, Vietnamese, and Cambodian community members who have  
9 historically been underrepresented in community planning processes; and

10 WHEREAS, under the ACT’s leadership across two years, over 400 residents, business owners,  
11 and stakeholders engaged in three public workshops and at community meetings to create  
12 the Action Plan; and

13 WHEREAS, this robust engagement process resulted in an Action Plan with six priorities:  
14 supporting diverse and engaged communities; developing dynamic neighborhood  
15 destinations; improving access to affordable, healthy food; creating active transportation  
16 choices; nurturing a healthy Longfellow Creek Watershed; and leveraging parks and  
17 cultural facilities to support a healthy community. The Action Plan seeks to coordinate  
18 existing and anticipated public and private investments and support community led  
19 efforts in the North Delridge to achieve the community’s vision; and

20 WHEREAS, the Seattle Department of Parks and Recreation has earmarked \$50,000 for a  
21 community planning process to examine enhancements to trail access points along  
22 SW Brandon Street as recommended in the Action Plan, and community engagement will  
23 begin in the second quarter of 2019; and

1 WHEREAS, the community engagement work will include design work for entries to the Camp  
2 Long trail at 29th Ave SW and to the Longfellow Creek Legacy Trail at SW Brandon  
3 Street that are more open and inviting to the public, improvements to the trail on the  
4 south side of SW Brandon Street between the Camp Long and Longfellow Creek trail  
5 entry points, and wayfinding elements to help pedestrians use SW Brandon Street as a  
6 route between High Point and Delridge; and

7 WHEREAS, the Delridge Neighborhoods Development Association and the Youngstown  
8 Cultural Arts Center are working in the Delridge neighborhood to implement the Action  
9 Plan by supporting diverse and engaged communities, providing dynamic neighborhood  
10 destinations, nurturing a healthy Longfellow Creek Basin, and leveraging parks and  
11 cultural facilities to support a healthy community; and

12 WHEREAS, Southwest Youth and Family Services is working to implement the Action Plan by  
13 supporting the diverse communities of Delridge; and

14 WHEREAS, the Delridge Grocery Cooperative is working to start a co-op in Brandon Junction;  
15 and

16 WHEREAS, a light rail station is planned to serve the Delridge neighborhood, and OPCD will  
17 work with the Delridge community on planning for the station; NOW, THEREFORE,

18 **BE IT RESOLVED BY THE CITY COUNCIL OF THE CITY OF SEATTLE,**  
19 **THE MAYOR CONCURRING, THAT:**

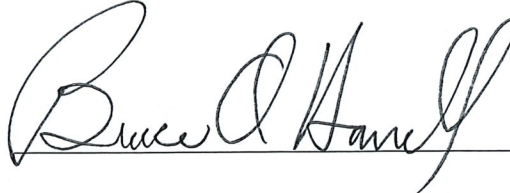
20 Section 1. **North Delridge Action Plan.** The City of Seattle ("City") recognizes the  
21 effort of the community members who participated in the creation of the North Delridge Action  
22 Plan, as shown as Attachment A to this resolution, as well as their deep commitment to the

1 Delridge community, and their collaborative work to bring about a shared vision for North  
2 Delridge.

3       Section 2. **Work Program.** The Executive is requested to work with the Delridge  
4 community to implement the priorities identified in Attachment B to this resolution. As the City  
5 works with the Delridge community, the Executive should work to integrate South Delridge into  
6 the implementation efforts, as appropriate.

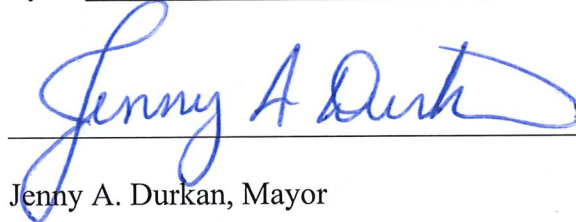
7       Section 3. **Comprehensive Plan.** The Council requests that the Office of Planning and  
8 Community Development review the draft Comprehensive Plan amendments included as  
9 Attachment C to this resolution, complete environmental review of the proposed amendments,  
10 and recommend amendments to the Delridge Neighborhood Plan goals and policies in the Seattle  
11 2035 Comprehensive Plan to implement the North Delridge Action Plan alongside any other  
12 Comprehensive Plan amendments docketed for consideration in 2020.

Adopted by the City Council the 22<sup>nd</sup> day of April, 2019,  
and signed by me in open session in authentication of its adoption this 22<sup>nd</sup> day of  
April, 2019.

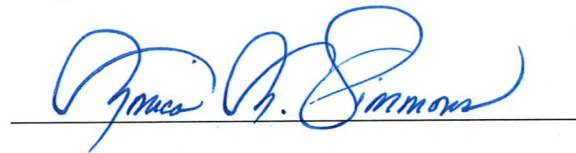


President \_\_\_\_\_ of the City Council

The Mayor concurred the 26<sup>th</sup> day of APRIL, 2019.

  
Jenny A. Durkan, Mayor

Filed by me this 26<sup>th</sup> day of April, 2019.



Monica Martinez Simmons, City Clerk

(Seal)

Attachments:

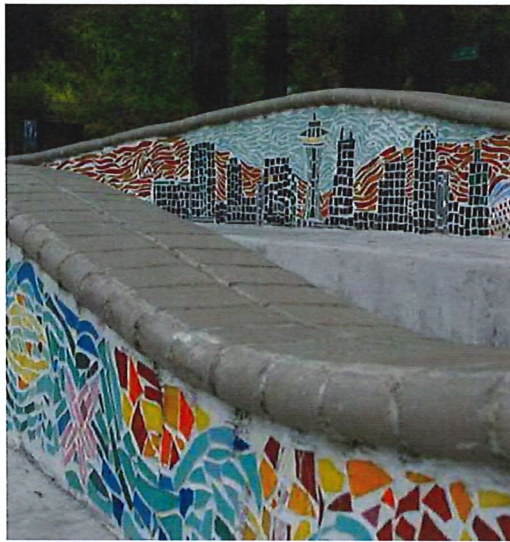
Attachment A - North Delridge Action Plan

Attachment B - North Delridge Action Plan Priority Actions

Attachment C - Delridge Neighborhood Plan Amendments



# North Delridge Action Plan



September 2018



# ACKNOWLEDGEMENTS

Our community, who has participated in this process to turn passion into action.

**North Delridge Action Community Team (ACT) Members,**  
working together to ensure that the project planning and implementation reflect the voices and balanced interests of the community:

<b>Nicholas Ames*</b>	Youngstown Flats	<b>Ann Jewitt</b>	Resident
<b>David Bestock</b>	Delridge Neighborhoods Development Assoc., Youngstown Cultural Arts Center	<b>Kim Justice*</b>	Pigeon Point
<b>Willard Brown</b>	Puget Ridge, Delridge Neighborhoods Development Assoc.	<b>Amanda Kirk</b>	Highland Park
<b>Lynda Bui</b>	Vietnamese Cultural Center	<b>Amanda Leonard</b>	North Delridge Community Council
<b>Parie Hines</b>	North Delridge Community Council	<b>Dorsal Plant*</b>	Highland Park
<b>Ranette Iding</b>	Delridge Grocery Cooperative	<b>Michael Taylor-Judd</b>	North Delridge Community Council
		<b>Carol Williams*</b>	Nature Consortium

\*Former members

## Participating Community Organizations:

Delridge District Council	Vietnamese Cultural Center
Delridge Neighborhoods Development Association	Food Empowerment Education and Sustainability Team (FEEST)
Youngstown Cultural Arts Center	Southwest Youth and Family Services
Nature Consortium	

## Community Liaisons:

<b>Paulina Lopez</b>	Latino Community	<b>Rich Summers</b>	Youth
<b>Hassan Wardere</b>	Somali Community	<b>Sokunthea Ok</b>	Cambodian Community
<b>Phung Nguyen</b>	Vietnamese Community	<b>Tuyet Dao</b>	Vietnamese Community

## City of Seattle and King County Lead Departments:

Seattle Department of Neighborhoods	Seattle Office of Planning and Community Development
Seattle Parks and Recreation	Seattle Office of Sustainability and the Environment
Seattle Department of Transportation	Seattle Public Utilities
Seattle Office of Economic Development	Public Health - Seattle & King County

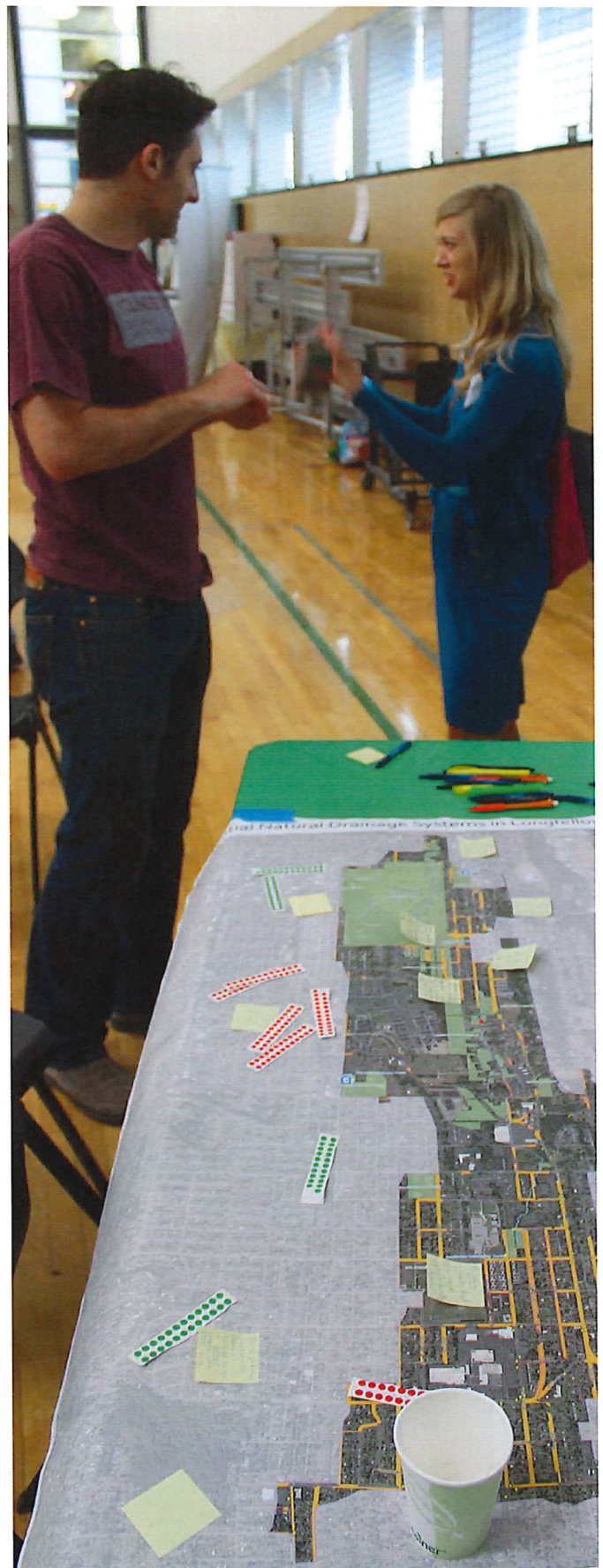
## Consultant Acknowledgements:

**Aileen Balahadia**, Advisory Committee Support  
**Brice Maryman & Lauren Squires**, MIG/SVR Design



# Contents

<b>Executive Summary</b>	<b>7</b>
<b>How the Plan is Organized</b>	<b>9</b>
<b>Introduction</b>	<b>10</b>
<b>Community Engagement</b>	<b>11</b>
<b>A Framework for Health and Equity</b>	<b>13</b>
<b>Goals, Policies and Strategies</b>	<b>15</b>
A. Diverse & Engaged Communities	17
B. Dynamic Neighborhood Destinations	25
C. Access to Affordable Healthy Food	35
D. Active Transportation Choices	39
E. A Healthy Longfellow Creek Basin	45
F. Supportive Parks and Cultural Facilities	49



## Dear Neighbors,

In a city of many neighborhoods, Delridge stands out as a unique community. It is blessed by beautiful parks and open spaces. It is home to assets like the Youngstown Cultural Arts Center and events like Arts in Nature and Delridge Day that celebrate the rich fabric of the community. The neighborhood is close to all the opportunities found in Downtown Seattle, and yet, historically, families of all kinds have found an affordable place to live in Delridge.

Together, the City and the neighborhood worked to produce the North Delridge Action Plan. Through an inclusive engagement process over two years, you identified many concerns and suggestions. Together, we identified both community-led and City-led strategies that will create positive change in the North Delridge Neighborhood. It is our shared commitment to racial and social justice that fuels our passion to address historic inequities and build economic opportunity.

This Action Plan builds on the themes of the 1999 Delridge Neighborhood Plan and responds to current challenges and opportunities. It combines the community's ambitious vision with policies and strategies we can use to achieve our bold goals in six priority areas: Diverse and Engaged Communities; Dynamic Neighborhood Destinations; Access to Affordable, Healthy Food; Active Transportation Choices; A Healthy Longfellow Creek Basin; and Supportive Parks and Cultural Facilities.

The Action Plan also integrates health equity as a guiding principal as we seek to create a neighborhood where all individuals have access to a healthy environment, jobs and services. We want to empower all residents to live to their fullest potential, regardless of race, ethnicity, gender, income, age, abilities, or other socially defined circumstances.

Our City team looks forward to working with you to implement the North Delridge Action Plan. Together, we will support a vibrant future for all who call Delridge home.

Sincerely,



A handwritten signature in black ink that reads "Jenny A. Durkan".

Mayor Jenny A. Durkan  
City of Seattle



# List of Acronyms

<b>ACT</b>	Action Community Team. The North Delridge Action Plan community advisory committee
<b>DGC</b>	Delridge Grocery Cooperative
<b>DNDA</b>	Delridge Neighborhoods Development Association
<b>DON</b>	Department of Neighborhoods
<b>FEEST</b>	Food Empowerment Education Sustainability Team
<b>HALA</b>	Housing Affordability and Livability Agenda
<b>HLA</b>	Healthy Living Assessment
<b>HSD</b>	Human Services Department
<b>KCD</b>	King Conservation District
<b>NDS</b>	Natural Drainage Systems
<b>NMF</b>	Neighborhood Matching Fund
<b>NPSF</b>	Neighborhood Parks and Streets Fund
<b>NSF</b>	Neighborhood Street Fund
<b>OED</b>	Office of Economic Development
<b>OH</b>	Office of Housing
<b>OPCD</b>	Office of Planning and Community Development
<b>OSE</b>	Office of Sustainability and the Environment
<b>PHSKC</b>	Public Health – Seattle & King County
<b>PICH</b>	Partnerships in Community Health
<b>SDCI</b>	Seattle Department of Construction and Inspections
<b>SDOT</b>	Seattle Department of Transportation
<b>SPR</b>	Seattle Parks and Recreation
<b>SPU</b>	Seattle Public Utilities
<b>SWYFS</b>	Southwest Youth and Family Services

## Partnerships to Improve Community Health (PICH) Grant

OPCD received a Partnerships to Improve Community Health (PICH) grant that enabled the City to hire a consultant and a community-based expert to engage disadvantaged people and communities in order to create a vision that identifies overall policies and practices that support the ability of the neighborhood's parks and cultural facilities to support the health of all Delridge's communities.



The North Delridge Action Plan confirms and updates priorities in the Delridge Neighborhood Plan, and identifies community and City steps to take action.

“Delridge is diverse,  
changing, and growing.”



Volunteers and students worked with artist Louis Chinn and others to design and paint the 210-foot retaining wall across from the Delridge Skate Park, adding depth, color and art along the busy thoroughfare.



# EXECUTIVE SUMMARY

## PLANNING FOR NORTH DELRIDGE

In 1999, the Delridge community worked together to create the Delridge Neighborhood Plan to support community development, manage growth and advocate for needed improvements. This North Delridge Action Plan (Action Plan) confirms the vision of the 1999 Neighborhood Plan, identifies current priorities and specifies steps the community, organizations and agencies can take to achieve the neighborhood vision. It also links the community's priorities to infrastructure initiatives in order to make the most of public investments.

The North Delridge Action Community Team (ACT) balanced community input, defined issues and priorities, and identified specific community and City actions addressing these issue areas.

## Supporting Diverse & Engaged Communities

Our vision is of a community where all people feel safe and welcome, have access to meaningful employment and have the opportunity to live their lives to the fullest potential, sustain their cultures, and meet their needs. Delridge is a neighborhood rich with people from many backgrounds who are eager to work together. We have collectively invested in developing strong community-oriented organizations. Neighborhood assets reflect the community and are equitably accessed.

## Developing Dynamic Neighborhood Destinations

We continue to work toward building neighborhood destinations where people gather, shop and get needed services. We have taken great strides by founding the Delridge Neighborhoods Development Association and developing places like the Youngstown Cultural Arts Center, Brandon Place, the Delridge Branch Library, and we have welcomed several new restaurants. We are ready to leverage our work and investments stimulate more economic development.

## Improving Access to Affordable, Healthy Food

Most Delridge residents are faced with the task of making long, multi-stop trips to gather healthy food. Community initiatives like the Delridge Grocery Cooperative, Little Red Hen Project and the Delridge P-Patch are helping to bring healthy, affordable food to Delridge. We seek to provide food security for all Delridge residents - where it is easy to get healthy, affordable and culturally appropriate food.

## Creating Active Transportation Choices

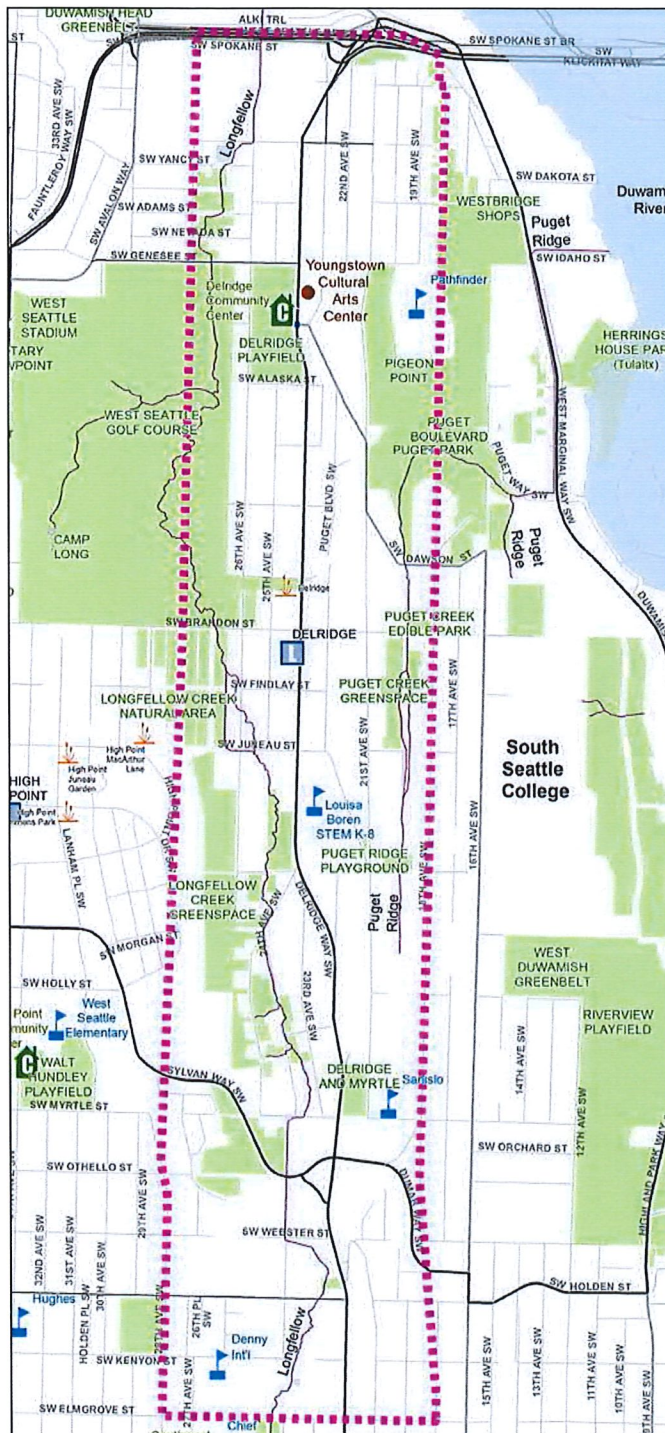
Delridge strives for a transportation network that links Delridge to surrounding areas, and that makes walking, biking and taking transit easy choices. New bike lanes, greenways and crosswalks have made it easier to get around. The City and Metro are planning to add RapidRide bus service, and with the passage of ST3, north Delridge is expected to be served by light rail starting in 2030.

## Nurturing a Healthy Longfellow Creek Watershed

The Longfellow Creek and its associated drainage basin are integral to the neighborhood's landscape. The City and neighborhood seek to coordinate efforts to address drainage and flooding issues by better guiding development, improving the Longfellow Creek Basin, creating green elements that welcome the rain – storing, draining, and cleaning it – to sustain the natural & built environments.

## Leveraging Parks & Cultural Facilities to Support a Healthy Community

Delridge is a community of different neighborhoods, knit together by its natural features, parks and trails. It also has many community and cultural organizations. Community initiatives and City levies have created substantial improvements like the Youngstown Cultural Arts Center, the Longfellow Creek Legacy Trail and Delridge Day Festival. We want to build on these to ensure that they take a lead role in meeting the needs of all people, and supporting active, healthy and fulfilling lives.



## Priority Actions

Diverse community members and local organizations expressed interest in working with the City to take on their near-term priorities to create lasting change.

1. **Economic Development:** Engage businesses and residents to create a business support and economic development strategy.
2. **Delridge - Where Nature, Art and Culture Collide:** Maximize the impact of community events like Delridge Day Festival, Art in Nature Festival, and DNDA's Cultural Series to engage Delridge's diverse communities and establish a strong identity for the community.
3. **Delridge Way SW RapidRide H Line Project:** Create a multimodal corridor that provides safe transportation connections to community destinations for people of all ages and abilities, supports economic development, and improves the character of Delridge and the community destinations along it.
4. **Access to Affordable, Healthy Food:** Support the Delridge Grocery Cooperative and other initiatives to establish a grocery store and other outlets that provide access to affordable, healthy food.
5. **Brandon Connector:** Improve SW Brandon Street to connect Camp Long with the east side of Delridge Way, and eventually to Puget Ridge and South Seattle College.
6. **Green Stormwater Infrastructure:** Implement natural drainage systems projects at key locations to improve drainage by installing roadside raingardens and sidewalks where there are none.

## Delridge Planning Area

The Delridge planning area, shown to the left, was defined by the community during its neighborhood planning effort in the late 1990s. It extends five blocks on either side of Delridge Way SW from the West Seattle Bridge to SW Elm Grove Street. Many aspects of the plan, such as human development, transportation, open spaces and trails, extend beyond these boundaries.





## HOW THIS PLAN IS ORGANIZED

### INTRODUCTION

Outlines why the community and City joined to create this Action Plan.

### COMMUNITY ENGAGEMENT

This section summarizes the process through which community members provided guidance and invaluable information. It includes the various methods used to reach out to and engage Delridge neighbors and stakeholders.

### HEALTHY LIVING FRAMEWORK

The framework describes the Healthy Living Framework and how the North Delridge Action Plan project uses this to inform community conversations, identify gaps and priorities in the community, and develop strategies that have tangible outcomes.

### GOALS, POLICIES, & STRATEGIES

The various components of the Action Plan will guide the City and community's work, as well as inform future development that occurs in the neighborhood. The Action Plan establishes six priorities including: supporting diverse and engaged communities; developing dynamic neighborhood destinations; improving access to affordable; healthy food; providing active transportation choices; nurturing a healthy Longfellow Creek watershed; and leveraging parks and cultural resources to support a healthy community. Each priority area includes a vision discussion, associated goals, policies and implementation strategies that build upon one another to help fulfill our shared vision for Delridge.

The 1999 Delridge neighborhood planning process identified goals and policies that the City integrated into its comprehensive plan. These remain relevant, and are included in the Action Plan with updated implementing strategies. The Action Plan also proposes new goals, policies and strategies that respond to current needs in the neighborhood and to the priorities of communities that had not engaged in previous planning. They are a distillation of multiple community conversations. For example, the Healthy Living Assessment, described on page 12, identified leading causes of death and health risk factors. This helped shape community conversations about cultural supports, transportation, access to food, and parks. The Action Plan anticipates that the City will consider amending the Comprehensive Plan to add the proposed new goals and policies to the existing Delridge neighborhood plan goals and policies.

### APPENDIX

Appendices are available on-line and includes these supporting documents:

- **Healthy Living Assessment:** evaluates indicators for food access, physical activity and equitable development.
- **Seattle's Community Toolkit - A handy Guide to City of Seattle Programs and Resources**

### MORE ABOUT THE PROJECT...

More information about the North Delridge Action Plan project, and Action Plan Appendices, can be found at

<http://www.seattle.gov/opcd/ongoing-initiatives/delridge-action-plan>



# INTRODUCTION

The North Delridge Action Plan is a place-based community development project. Through an inclusive community engagement process, it outlines a shared vision and creates a framework for actions that take advantage of City and private resources and investments.

## WHY THIS PROJECT?

It is important for the community and the City to work together to manage change and seize opportunities. This Action Plan articulates community goals so that the City, developers and neighborhood residents can work together to bring about a shared vision for Delridge. The Action Plan provides community direction and coordinated strategies to help direct the following City projects in Delridge. In addition to providing input into these specific projects, the plan is opportunistic, identifying community aspirations in order to inspire people to get grants, and help shape future funding decisions, influence routine actions, or take advantage of other opportunities that come along.

### Delridge RapidRide H Line Project

Delridge Way SW is a critical local and regional transportation corridor for all travel modes. It is home to some of Seattle's most diverse neighborhoods who could benefit from affordable and convenient transportation choices. The corridor project looks to transform the corridor into a safer and healthier public space with predictable network connections for all travelers, while supporting and initiating economic development and upgrading transit service.

### Community Health

Health data reveals that compared to other Seattle neighborhoods, people in the larger Delridge area suffer from higher rates of chronic disease and residents more often have a lower sense of wellbeing. As we have made progress fighting infectious diseases such as flu and small pox, chronic diseases like obesity, diabetes and cancer have become the leading causes of death in the United States. Community planning provides the opportunity to improve the social determinants of health in ways that can help reduce the occurrence and impact of chronic diseases: access to good jobs; availability of affordable healthy foods; intergenerational impacts of racism; access to parks and recreation facilities; and the quality of neighborhoods.

### Community Support

Community support for planning is key to the success of place-based community development. The North Delridge community advocated for the City to update their neighborhood plan during the Neighborhood Plan Status Checks in 2009. At that time, the City Council had prioritized planning for communities where light rail was scheduled to open in 2009. After completing those efforts, the City completed a preliminary issues and opportunity assessment in 2011 and began planning in 2012. Neighborhood organizations including the Delridge District Council and Delridge Neighborhoods Development Association provided early direction on the priorities that the planning should address.

### Sound Transit 3

In November 2016, voters of the Central Puget Sound region approved the Sound Transit 3 (ST3) ballot measure. The plan builds 62 new miles of light rail to form a 116-mile system. The West Seattle to Downtown Seattle Light Rail project will provide a light rail connection from Downtown to Alaska Junction, including a primarily elevated alignment and five stations. One station, near SW Andover Street, will serve the Delridge corridor. Planning for the alignment, station and surrounding area will begin in the upcoming years. This Action Plan identifies a shared vision and preliminary considerations to be addressed during that work.



## COMMUNITY ENGAGEMENT

Starting in mid-2014, City staff from the Office of Planning and Community Development (OPCD) and Department of Neighborhoods (DON) began working with a cross-section of community members to assess and address those conditions that have changed since the 1999 Neighborhood Plan. New community members worked with those who participated in the planning over twenty years ago. Through hands-on and interactive workshops, focus group meetings, individual workshops, in-person interviews, business canvassing, and online surveys, neighbors used a variety of ways to become and stay involved in the project.

Inclusive outreach and engagement was a primary objective of the planning process. A broad range of community stakeholders who live, work, play, attend school, own property, own a business, worship or have other personal and/or professional interest in the planning area engaged in the planning. Bicultural and/or bilingual Community Liaisons connected with five historically underrepresented communities to hear the voices of youth, Latino, Somali, Vietnamese and Cambodian communities. The liaisons helped to strengthen the bridge between the City, community members, organizations and businesses. This effort was necessary in order to build relationships with those who were new to the planning discussion, and to provide sufficient background information to help them participate effectively. Community Liaisons went beyond translation and interpretation to create culturally-appropriate opportunities for dialogue about planning, facilitate deeper understanding of community issues, and provide an atmosphere that promotes richer input.

At the initial phase of the project, from early June to November of 2014, the liaisons and City staff informed the community about the project, asked for input into the project objectives, and encouraged people to volunteer for the North Delridge Action Community Team (ACT). Individuals from a variety of backgrounds – community members, representatives from community-based organizations, business owners and historically underrepresented community members – provided input through various ways such as focus groups, in-person interviews, and community

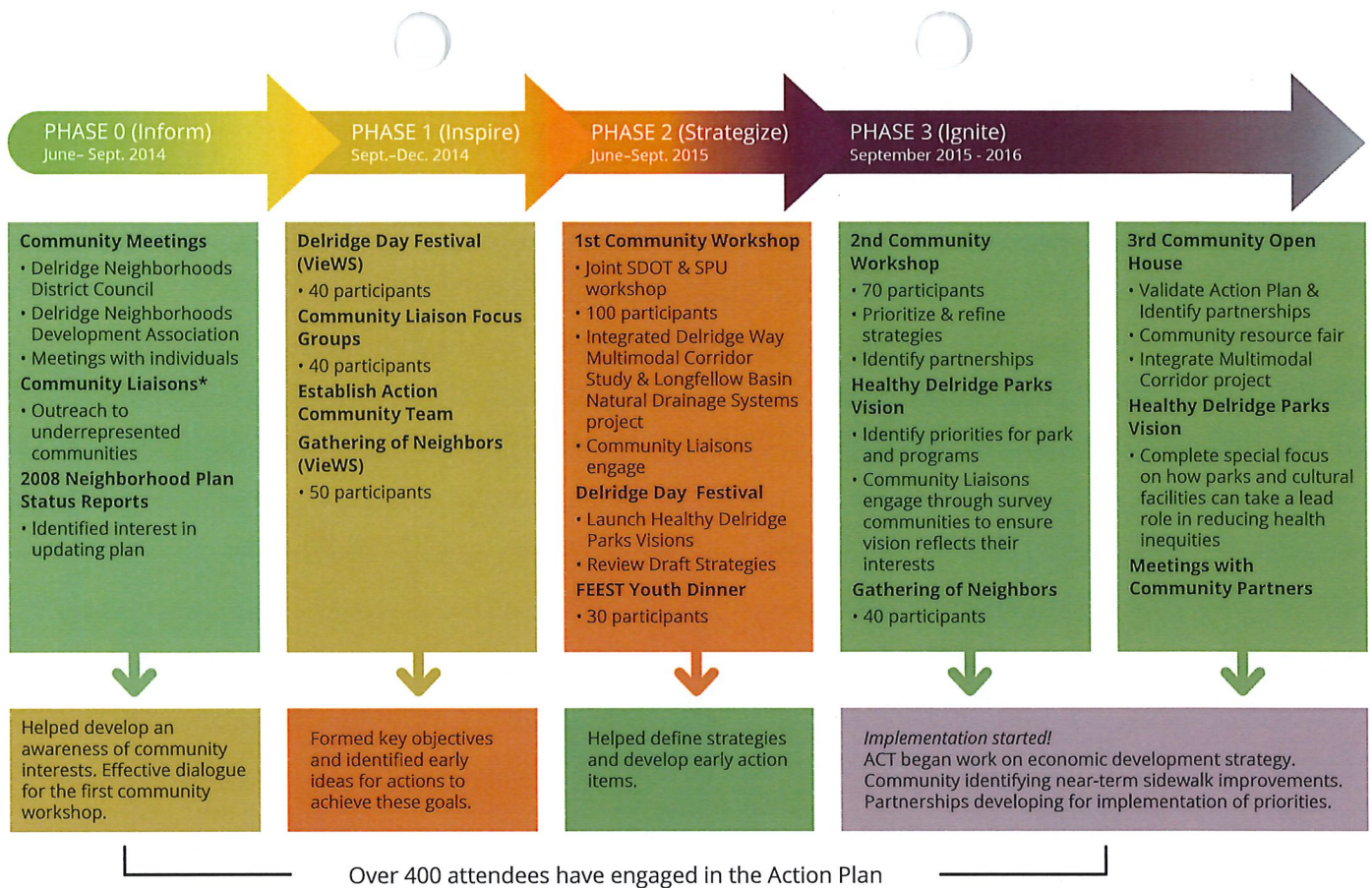
meetings. During this phase, approximately 50 individuals from historically underrepresented communities engaged with the Community Liaisons. Approximately 70 stopped by our booth at Delridge Day Festival\* to share what they love about Delridge, what Delridge needs and suggest things we should work on. At Gathering of Neighbors\*, about two dozen community members sat down at tables to map issues and opportunities, and provided information about the neighborhood through an audience response system. These conversations and feedback helped reach the broader Delridge community, and get a better understanding of the assets, issues, and opportunities to be explored.

The City formed the ACT to work in partnership with the City and the community to balance the different interests of the community with the goal of developing a shared vision and implementation plan. The ACT consists of local leaders representing different backgrounds and interests.

At the first community-wide workshop in June 2015, held at the Southwest Teen Life Center, 75 participants with diverse backgrounds, race, ages, and interests reviewed preliminary strategies that responded to their concerns and hopes for Delridge. The community priorities, associated goals, strategies and actions grew out of this phase.

\* Delridge Day Festival and Gathering of Neighbors are produced by VieWS (Visualizing Increased Engagement West Seattle). VieWS was founded in 2011 by a group of neighborhood council and community volunteers. Their vision is to create ways for all residents of West Seattle to come together to learn and to get involved.





\* This project's Community Liaisons included Vietnamese, Cambodian, Somali, Spanish-speaking, and youth communities.

During the summer and fall of 2015 - at the Delridge Day Festival, through Community Liaisons, at youth dinners hosted by Food Empowerment Education and Sustainability Team (FEEST) and a community-wide workshop – community members refined and prioritized strategies and began developing the Action Matrix. Through this phase, the community began considering who could take initiative and what partnerships they could build to take action.

In the fall of 2016, community members reviewed comments on the final draft of the action plan, and Community Liaisons provided detailed review to ensure this draft reflected ideas and priorities from their respective communities.





# A FRAMEWORK FOR HEALTH AND EQUITY

Factors like where we live, our environment, our income and education, and our social environment can impact our health to a greater degree than factors like access to health care services. These “social and physical determinants of health” reflect how significantly the environment in which people live, learn, work, and play can impact health outcomes.

## **Social determinants include:**

- Access to jobs that pay living wages
- Availability of affordable healthy food
- Impacts of racism or discrimination
- Public safety and exposure to crime
- Social connectivity
- Quality of schools

## **Physical determinants include:**

- Presence of active transportation options
- Access to parks and recreation facilities
- Quality of housing and neighborhoods
- Exposure to environmental hazards

Public health statistics show that chronic diseases and health issues are inequitably distributed, with low-income neighborhoods and communities of color bearing a greater burden and demanding greater attention. In response to this, the City used a Healthy Living Assessment (HLA) to assess neighborhood assets and gaps that are related to the social and physical determinants of health (see Appendix A). These include data like census, food access, transportation, goods and services, recreation, economic opportunities, and access to affordable housing. The HLA also incorporated a questionnaire and discussion questions focused on how people use their neighborhoods, where they go for shops and services, social gathering, how they get around the neighborhood, and to identify community-serving assets to preserve. The information helps us see interconnections between people and their neighborhood, and to recommend actions that can improve the people's health.

The HLA showed that Delridge is well-served with many assets and services, but a number of indicators show that health-supportive infrastructure or activities are missing.

- None of the Delridge planning area is within a half mile of a grocery store that accepts SNAP.
- Fewer people ride a bicycle, walk or take transit than the City as a whole (20% compared to 32%). About half of the (52%) road network has sidewalks on both sides.
- Eight of the 11 neighborhood services considered to be supportive of a complete neighborhood (e.g. childcare, library and schools) are present, but only five of the 13 shops (e.g. banks, pharmacy, food stores) are available.

- Delridge has many parks and recreation resources and 24% of the Delridge Health Reporting Area (HRA) are children 17 and younger, but only 42% of the area is within ¼ mile of a playground.
- Unemployment was higher than Seattle as a whole (9.4% versus 6.3%).
- Fewer Delridge residents have at least a bachelor's degree than citywide (37% versus 55% citywide).

Health data reveals that, compared to other Seattle neighborhoods, people in the larger Delridge area suffer from higher rates of chronic disease, and residents more often have a lower sense of wellbeing. People in the Delridge Health Reporting Area (HRA) more frequently report that their general health is fair or poor and they suffer from: highest rate of obesity; second highest rate of Cancer; highest rate of Chronic Lower Respiratory Disease; and second highest suicide rate. On average, a person in the Delridge HRA can expect to live almost 6 years less than someone in Northeast Seattle. Research has shown that these risk factors and health outcomes tend to be concentrated in low income, immigrant, and communities of color who experience inequity and the ongoing impacts of racism. It is therefore likely that people of color and low-income households in Delridge fare worse than White residents.

The interrelationships between these determinants of health influence a person's and a community's health. Therefore, actions that target several of these social and physical determinants are more likely to improve a community's health than actions that target just one determinant. Our planning strives to reduce inequities by connecting people and places, and making sure places support the health of people who live and work there. A healthy neighborhood includes strong community and organizations, healthy people and families, and a supportive environment.

## **Strong Communities & Organizations:**

A thriving, diverse and interconnected community, supported by strong social and cultural institutions and services.

## **Healthy People & Families:**

A neighborhood that provides access to resources, such as healthy food retail and parks, necessary to live a healthful life.

## **Supportive Physical Environment that Support our Community:**

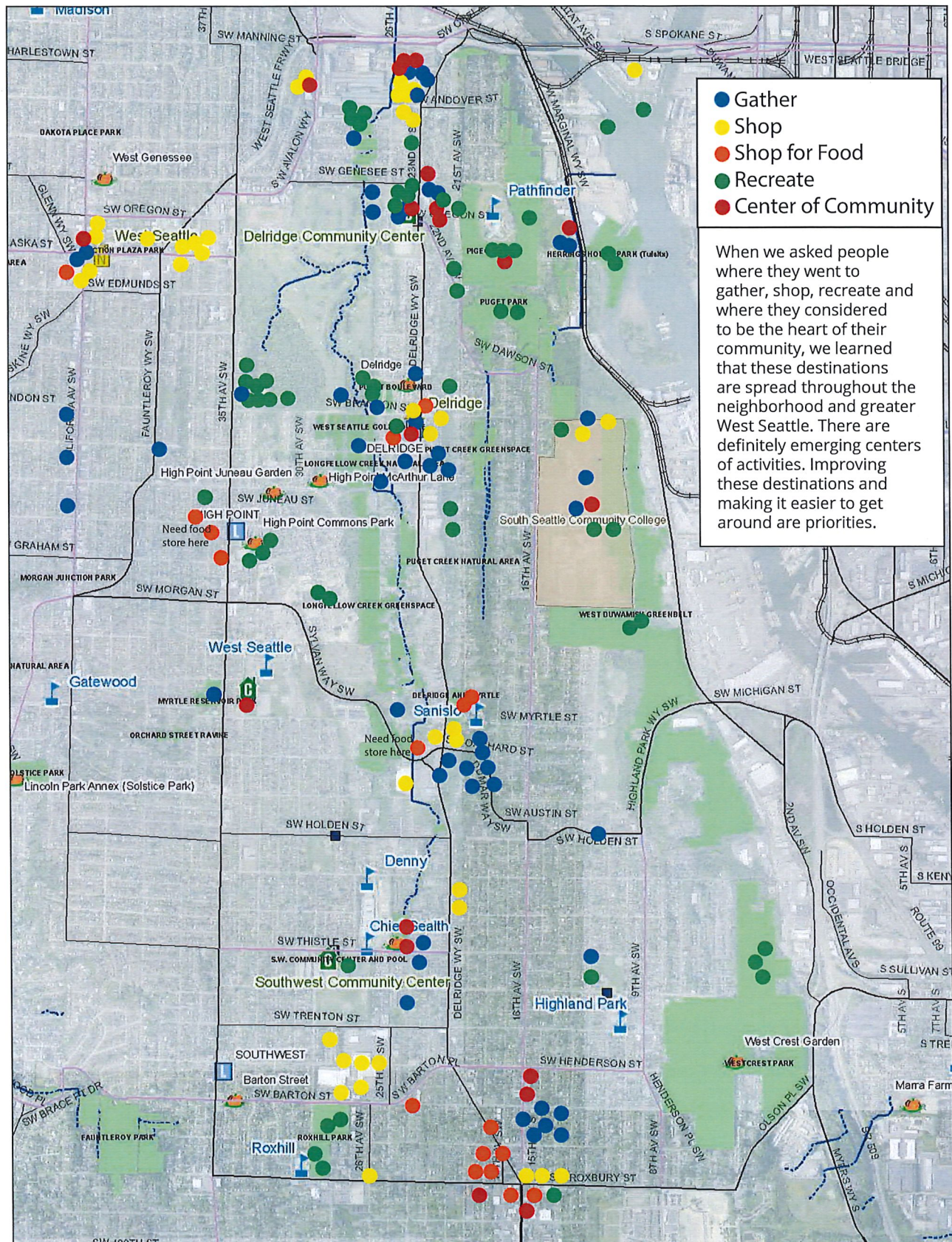
A neighborhood that has infrastructure to support healthy activities such as parks, sidewalks, transit, shops and services.

Using this framework for health and equity, and a combination of data and discussion, led to the six community priorities that together will support a healthy Delridge.

<sup>1</sup> <http://www.who.int/hia/evidence/doh/en/>



## MAPPING CONCENTRATIONS OF ACTIVITY





"Delridge has a caring community."



## OVERVIEW OF GOALS, POLICIES & STRATEGIES

The community identified six priorities areas:

### A. Supporting Diverse & Engaged Communities

Supports a diverse and resilient Delridge where people of all ages, backgrounds and cultures can find meaningful support, opportunities to give back to their community and spaces to build community. Supporting communities also requires economic opportunity and access to meaningful, living wage employment for all families to thrive & prosper.

### B. Dynamic Neighborhood Destinations

Prioritizes developing neighborhood nodes with: distinctive design; a mix of businesses, services, cultural and recreational opportunities, and homes; and excellent access.

### C. Access to Affordable Healthy Food

Seeks to support a healthy Delridge by increasing access to affordable healthy food for all families both within North Delridge and to other areas where people can buy food important to their culture.

### D. Active Transportation Choices

Promotes a healthy Delridge by ensuring Delridge Way SW and adjacent streets support safe and predictable movement of people and goods.

### E. A Healthy Longfellow Creek Watershed

Envisions creating green elements that welcome the rain – storing, draining, and cleaning it – to sustain the natural and built environments.

### F. Supportive Parks and Cultural Facilities

Promotes strategies that preserve, create and activate park and cultural facilities so they take a lead role in the health of Delridge's community, and environment.

This section of the Action Plan includes goals, policies and strategies arranged by each priority area. Delridge Neighborhood Plan Goals were The community confirmed and prioritized these through workshops exercises throughout the process.

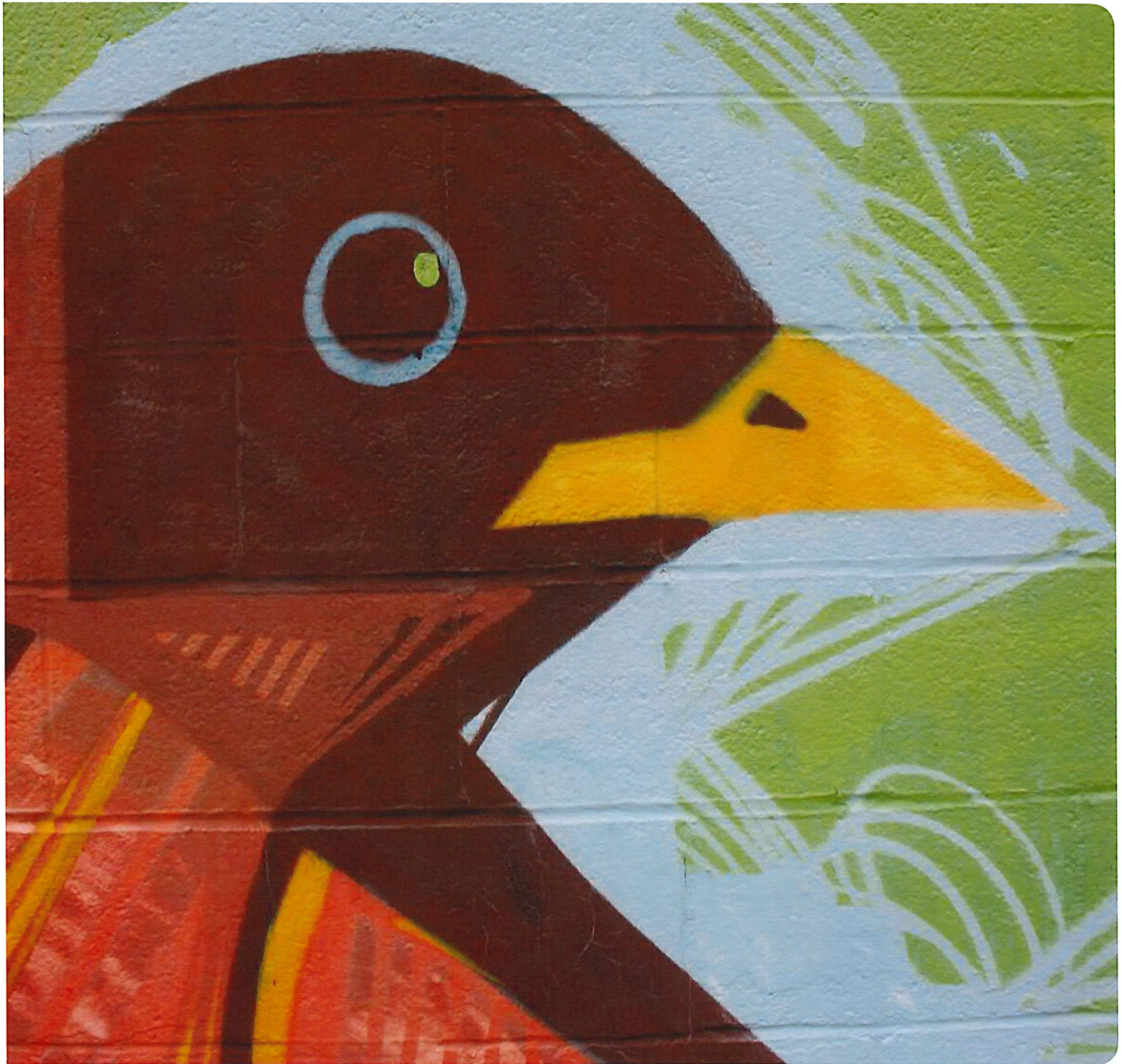
City staff and the ACT used the community suggestions and knowledge about the City and community organizations to develop Goals, Policies, Strategies and Actions for each priority. Goals are desired short-term or long-term outcomes that the City and the community are working toward. Policies are general principles to guide decisions and achieve goals.

- Goals and policies are adopted as part of the Comprehensive Plan Neighborhood Planning Element.
- Strategies are specific ways to achieve goals. They build upon one another to help fulfill the vision and priorities of the Delridge community.

The various components of the Action Plan will guide the City and community's work as well as inform future development that occurs in the neighborhood.

*Seattle's Community Toolkit: A Handy Guide to City of Seattle Programs and Resources* identifies resources and programs that can help implement community-led actions.





A portion of a DNDA-sponsored mural project that was part of a larger initiative to transform local corner stores into destinations where local residents have an option to purchase affordable, delicious, and healthy food for their families.



# A SUPPORTING DIVERSE & ENGAGED COMMUNITIES

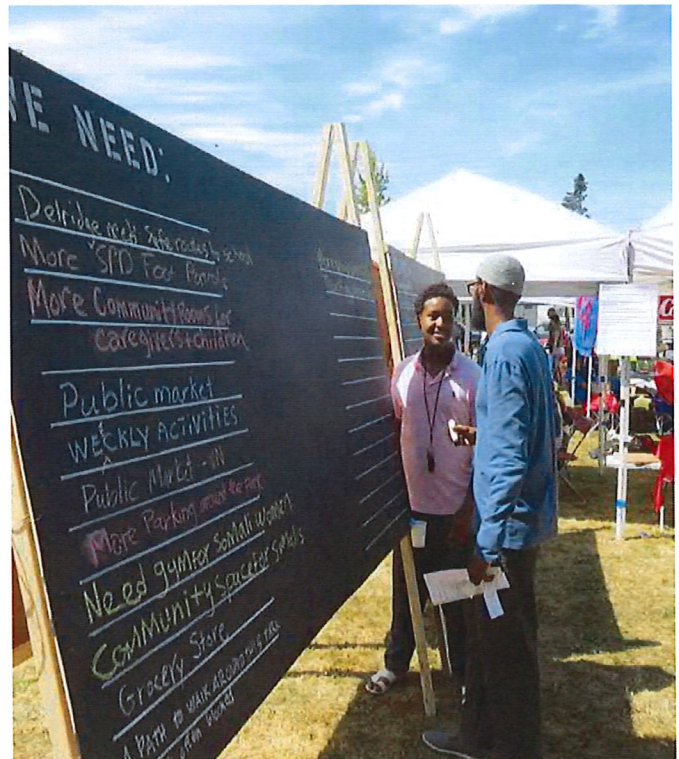
Support a diverse and vibrant neighborhood where people of all ages, backgrounds and cultures can find meaningful support, opportunities to give back to their community, and safe gathering spaces to build community.

## DISCUSSION

Delridge is a neighborhood with tremendous diversity: people from all cultures; long-time residents and newcomers; young and old; people who own and rent homes; and those who work in a variety of jobs. Our vision is of a Delridge community where all people feel safe and welcome, and have the opportunity to participate in community, express what is most important to them, and meet their social, economic, and recreational needs. This section identifies strategies that:

- Sustain the different cultures and traditions in Delridge;
- Create pathways to careers;
- Nurture a safe and welcoming neighborhood;
- Build a shared identity where people of all cultures and interests can come together; and
- Support great futures for Delridge's youth.

The Action Plan also seeks to promote a healthy Delridge by creating economic opportunity and access to meaningful, living wage employment for all families to thrive and prosper. This can be accomplished by improving awareness and access to career preparation programs, by providing transportation options to job centers, and by increasing the number of jobs by building businesses locally, as well as regionally.



“Make easy connections between residents & jobs.”



## GOALS

---

- A community with a range of household types, family sizes and incomes – including seniors and families with children. D-G6\*
- A community that preserves and enhances the residential character of single family neighborhoods within the Delridge community while providing a range of housing types to fit the diversity of Delridge households. D-G7
- A diverse community of neighborhoods with people from many cultures, long-time residents and newcomers, young and old, people who own and rent homes and who work in a variety of jobs. A community where all people feel safe and welcome, have the opportunity to participate in their community and express what is most important to them, and which meets its residents' social, economic, and recreational needs. D-G8
- A community fully involved in efforts to implement the neighborhood plan, and to maximize the efficient use of available resources. D-G9
- A community that offers pathways to jobs and wealth creation. (New)

## PRIORITY STRATEGIES (1-3 YEARS)

---

- Form a community organizational structure to steward the overall vision for Delridge in a manner that recognizes the existing organizational infrastructure and enfranchises historically underrepresented communities in Delridge.
- Broaden participation and sustain existing neighborhood events to create long-term identity of the neighborhood as "Delridge: Where nature art and culture collide."
- Raise awareness of local workforce training programs and employment opportunities.
- Support members of the ACT and DNDA with establishing an economic development strategy for Delridge that includes an element of local job creation.

## TAKING ACTION

---

- The ACT has started community-wide discussions about how to steward the vision for Delridge in a manner that recognizes the existing organizational infrastructure and enfranchises historically underrepresented communities in Delridge.
- A 16-member steering committee helped the Delridge Neighborhoods Development Association produce the Delridge Neighborhoods Cultural Events Series 2016 that held 10 cultural events.
- Delridge Day Festival and Arts in Nature organizers produce annual celebrations of art, nature and community.

\*Goals and Policies with a number (e.g. D-G6) are currently adopted in the Comprehensive Plan Neighborhood Planning element. Ones with (NEW) are proposed for addition to the Comprehensive Plan.



## POLICIES

### Housing

Seek to use regulatory tools or other means to preserve open space and natural features while increasing the variety of housing types available to the community.

D-P16



- Work with OPCD, DON, and the Office of Housing (OH) to identify appropriate strategies to preserve & create affordable housing.
- Promote more "workforce" housing.
- Seek to preserve existing affordable housing.

Encourage the rehabilitation of substandard housing.

D-P17



- Promote grants and programs like Rebuild Together and the West Seattle Tool Bank that provide weatherization, and rehabilitation assistance to low income households.



A partnership between DNDA, SWYFS and the Seattle Police established the Delridge Mural project to address gang-related graffiti plaguing Delridge. Since then, youth from the Seattle Youth Violence Prevention Initiative worked with artists to create a series of murals.



## POLICIES

### Community & Culture

Seek to involve the whole community to make services available to the broadest cross section of the community by developing programs that address the needs of individuals and families. D-P21



Seek to build community leadership and the capacity of Delridge-serving organizations. (NEW)

Promote inclusive civic engagement and community building to help enfranchise Delridge's diverse population. (NEW)

Use a race and social justice analysis, such as the Race and Social Justice Toolkit to establish racial equity outcomes when scoping capital projects and significant programs. (NEW)

Seek to provide opportunities for multicultural sharing, education, understanding, and celebration through inclusive engagement and appreciation efforts, and through the provision of public meeting facilities. D-P18 (EDITED)

Seek to develop cultural programs (such as art, music and theater), and support community programs. Seek to provide public facilities that support the cultural programs. D-P22

## STRATEGIES



- Support Delridge Day Festival as an opportunity for fun and to share information about supportive programs.
- Support Southwest Youth and Family Services (WSYFS), Youngstown Cultural Arts Center, Delridge Community Center, Delridge Branch Library and the Southwest Teen Life Center to offer coordinated services and programs.
- To the greatest extent feasible, contract with non-profit organizations serving underrepresented communities in order to build their capacity for developing and implementing programs.
- Support the Delridge Community Center with programming and raising funds.
- Work with DON to raise awareness and participation of immigrants, communities of color and religious communities in public services and public facilities.
- Consider a multicultural senior center or partnership with organizations like Asian Counseling and Referral Services to offer programs serving the Delridge area.



- Connect Delridge non-profits to capacity building programs, such as at Non-Profit Assistance Center or 501 Commons.
- Encourage participation, especially by people of color, in leadership programs, such as Puget Sound Sage Community Leadership Institute, Seattle's People's Academy for Civic Engagement, King County's Project LEAD, and Leadership Tomorrow. Work with these organizations to provide these programs in Delridge, and in several languages (e.g. Spanish, Vietnamese, and Somali).
- Work with organizations such as the Delridge Neighborhoods Development Association (DNDA), and SWYFS, and programs such as Leadership Tomorrow to identify community leaders and share connections.
- Work with Seattle's Race and Social Justice Initiative team in the Office of Civil Rights to provide trainings such as Race the Power of Illusion, Cracking the Code, and Leading with Race to advisory committees.



## POLICIES

Promote inclusive civic engagement and community building to help enfranchise Delridge's diverse population. (NEW)

Strengthen partnerships and work with communities of color, immigrants, refugees, native peoples, people with low incomes, youth and limited English proficiency individuals in Delridge when developing and implementing plans that affect the distribution of resources, and programs that serve the community. (NEW)

Seek to provide opportunities for multi-cultural sharing, education, understanding, and celebration through community participation and appreciation efforts, and through the provision of public meeting facilities. D-P18

Seek to develop cultural programs (such as art, music and theater), and support community programs. Seek to provide public facilities that support the cultural programs. D-P22



## STRATEGIES



- Develop volunteer opportunity database and raise awareness of opportunities to participate in organizations such as the Community Center Advisory Committee and DNDA Board.
- Work with Community Liaisons and DON to develop inclusive public engagement plans. Consider the following steps as cost-effective ways to engage a representative cross-section of community voices:
  - Broaden community engagement replicating examples such as the Yesler Terrace and International Children's Park.
  - Use project-specific public involvement as an opportunity to bring more people to the table, and engage them with other boards and commissions in the neighborhood
  - Work with city to use Community Liaisons more frequently in planning for and undertaking Delridge activities. Consider building on the capacity of SWYFS trusted advocates to be a community-based resource for engaging underrepresented communities
  - Work with organizations such as Neighborhood House, SWYFS and Vietnamese Cultural Center, and events such as Youngstown's Cultural Arts Series and Delridge Day Festival to reach communities where they gather, rather than making communities come to uncomfortable settings.
  - Consider using modest stipends to compensate time-burdened, lower-income community members for their participation in feedback events.



## POLICIES

Seek to provide opportunities for multi-cultural sharing, education, understanding, and celebration through community participation and appreciation efforts, and through the provision of public meeting facilities. D-P18

Seek to develop cultural programs (such as art, music and theater), and support community programs. Seek to provide public facilities that support the cultural programs. D-P22



Strive to build strong partnerships with local crime prevention efforts. D-P20

Seek to inventory and promote neighborhood-based emergency preparation plans. D-P19

## STRATEGIES

- Align Delridge's signature events including Delridge Day Festival, Art in Nature and the Delridge Cultural Series to engage all communities and establish Delridge as the place in Seattle where art, nature and culture collide.
- Establish Delridge's identity through signage, art and other communication to reflect its diversity.
- Work with youth & community to improve public spaces by installing and maintaining multicultural art, historical markers and/or murals in Delridge.
- Support community organizations and efforts like the Delridge Cultural series with securing sustainable funding to create and advertise social and multicultural events, such as the Tet celebration at the Vietnamese Cultural Center, or a new Dia de los Muertos at Delridge Community Center.
- Support & develop partnerships among existing cultural groups and programs like Van Lang Vietnamese School. The Van Lang Vietnamese School needs a permanent space to organize language classes for learners and activities. It is a volunteer-based organization that needs more funding to sustain its services to the community.

- Promote neighborhood block watches & attendance by local crime prevention Seattle Police Department (SPD). Advertise & recruit for SW Crime Prevention Council and/or ethnic specific councils for Delridge area.
- Partner with community organizations to expand crime prevention trainings especially non-English speaking communities.

- Encourage the Office of Emergency Management to orient Delridge's diverse communities about the Seattle Neighborhoods Actively Prepare (SNAP) program to help the neighborhood get organized around emergency preparedness. There is Community Emergency Hub at the Delridge P-Patch.
- Increase awareness and participation in programs to increase positive use of streets and community surveillance.



## Plan Stewardship

Promote partnerships with projects that can leverage City efforts toward the implementation of the Delridge neighborhood plan. D-P23

Support community-based efforts to implement and steward the plan D-P24



- Develop a stewardship group or structure to promote North Delridge Action Plan priorities that includes the voices of Vietnamese, Somali, Cambodian, Latino and other communities who are underrepresented.
- Consider the priorities in this Action Plan when developing the Capital Improvement Plan and ranking City grant applications.
- Support collaborations among organizations like the Camp Long Advisory Council, the DNDA Board, and neighborhood groups, to maintain and track progress on the North Delridge Action Plan.
- Strive to periodically update the implementation guide that identifies partnerships, organizations, agencies and funding sources for implementation.
- Sustain City grant sources for communities and secure other grant programs to support community implementation of their plans. Work with existing organizations and events to nurture the capacity of Delridge's communities to implement plan recommendations.
- Identify specific supports for historically underrepresented communities to participate in stewardship including City advisory councils, DNDA board, as well as neighborhood councils, neighborhood HUBs, and the Delridge District Council. Partner with training opportunities such as PACE or the Community Leadership Institute to develop capacity.
- Seek a grant to develop a Delridge Website as part of the Action Plan stewardship structure. Work with DNDA to host a community-wide website, calendar and kiosk.
- As part of Gathering of Neighbors (VieWS), or a similar event, host an annual State of Delridge discussion where organizations celebrate and share their accomplishments.
- Explore whether "push" alerts could be used to alert community members about events via the Find It, Fix It application, or through cell phone alerts.





## POLICIES

### Pathways to Careers


Seek to create greater employment and shopping opportunities within the Delridge neighborhood. D-P25


Encourage local business development opportunities, particularly for small businesses that may be owned by or employ Delridge residents. D-P27


Seek to participate with other public agencies and private interests in marketing projects, labor force training programs, and other efforts that support community residents in need of employment. D-P26

Seek to participate with other public agencies and private interests in marketing projects, labor force training programs, and other efforts that support community residents in need of employment. D-P26

## STRATEGIES

- 
- Establish an economic development strategy for Delridge that includes creating jobs by marketing the affordability of commercial space to attract craft business (brewing, or metal and woodworking). See economic development strategies in the Dynamic Neighborhood Destinations section.

- 
- Work with the Office of Economic Development (OED) to increase awareness of small business supports like Restaurant Success and Craft3.

- 
- If it meets the guidelines, to implement Priority Hire on Delridge RapidRide H Line project, and seek to maximize job training and small business opportunities on projects like the Longfellow Natural Drainage Systems improvements.
  - Convene specific discussions with OED, SWYFS, So. Seattle College about raising awareness of local workforce training programs and employment opportunities.
    - Work with City departments (e.g. Parks lifeguards, Earth Corps) to identify employment and training opportunities within Delridge that can increase access to workforce training for low income residents in Delridge.
    - Work with Seattle Jobs Initiative to engage and serve Delridge residents.
    - Advertise City programs like: Student Teen Employment Preparation; Pathways to Careers; Seattle Library's Student Assistance Program; and The Able Teens.
    - Advocate for sustaining the Seattle Youth Violence Prevention program and work with SWYFS to manage the program in collaboration with meaningful projects that support the goals of the North Delridge Action Plan.
  - Encourage volunteering with programs that support youth at Youngstown and SWYFS such as Arts Corps and the Service Board.
  - Review childcare providers to assess gaps.
  - Through the Delridge RapidRide H Line project, seek to improve access to jobs via all travel modes.



# B DYNAMIC NEIGHBORHOOD DESTINATIONS

## DISCUSSION

The Delridge neighborhoods in the eastern portion of West Seattle include a wide area of ridges and the dell along Longfellow Creek. The area is not well-connected to the more established West Seattle business districts. For many years, the Delridge community has worked to create four distinct neighborhood destinations along Delridge Way, focusing shops, entertainment, community facilities, and residences. These will be easily accessible by walking, biking, transit, and cars. The action plan combines land use, transportation and economic strategies in support of this objective.

### Overall Strategies

- Improve the sense of identity and place with a series of unifying and differentiating public elements including: distinctive gateway or entryway improvements; lighting, transit shelters and street trees; as well as distinctive designs for each of the neighborhood destinations.
- Create easy access to schools, transit, parks and food.
- Promote opportunities for economic development.
- Attract a grocery serving northern Delridge.
- Work through design review to build on streetscape improvements and encourage development that creates a strong visual identity.



"Recruit more small businesses."

### Andover Junction

- Improve access to existing businesses.
- Create a distinct entry to Delridge.
- Organize the community to engage in a station area planning to prepare for Sound Transit 3.
- Improve walking environment and connection to transit on SW Spokane Street.
- Improve short-term business parking.
- Consider zoning changes to encourage more dense, multifamily housing and businesses.

### Delridge Community Campus

- Expand culturally relevant programming.
- Improve the ability to walk between buildings and across Delridge Way SW.
- Incorporate public art and other features that reflect the cultures in Delridge and improve neighborhood visibility.
- Support collaboration between the Delridge Community Center, Southwest Youth and Family Services, Youngstown, Camp Long, and community groups.

### Brandon Junction

- Improve area to be North Delridge's neighborhood business district, and as a Seattle destination.
- Expand food and family-oriented businesses, and support existing businesses.
- Create long-term affordable farmers market or stand.
- Improve bus connections, bike and pedestrian safety, beautification projects and marketing.
- Construct sidewalk and drainage improvements - particularly along SW Brandon St.
- Activate parks and improve connections to Camp Long and Longfellow Creek Trail along SW Brandon Street.

### Sylvan Junction

- Improve the area to serve as an "international village center," supporting the Vietnamese Cultural Center and diverse communities in the surrounding areas by providing goods, food, & transit service.
- Improve connections to Longfellow Creek Legacy Trail.



## GOALS

- A series of mixed-use destinations or centers along Delridge Way clustering commercial, business, entertainment, community uses, and public facilities. D-G2.
- The mixed-use neighborhood destinations or centers provide services to residents in compact areas accessible from walkways, park trails, bikeways, transit routes, and local residential streets. D-G3

## PRIORITY STRATEGIES (1-3 YEARS)

- Create a partnership between community, businesses and agencies to support existing businesses and stimulate small business development in North Delridge.
- Support development of a grocery store that provides affordable, healthy food serving North Delridge. This priority is shared with the actions identified under "Accessing Affordable Healthy Food." It is important to locate a grocery store at either Brandon or Sylvan Junction in order to be convenient and to strengthen these areas as shopping destinations.
- Improve Delridge Way SW with safe pedestrian crossings, art, and fixtures that establish a strong identity.

## TAKING ACTION

- The ACT has identified business support and economic development as the number one priority for their implementation work, and is using Neighborhood Matching Fund and Only in Seattle grants and community in-kind work to: support outreach and survey of Delridge business and property owners; identify their needs; and prioritize key issues and define next steps.
- The Delridge Grocery Cooperative is working to start a co-op at the DESC building in Brandon Junction.
- Through the RapidRide H Line Project the community is working with the City to identify access improvements and improve the function and character of Delridge Way SW.

"We need more places to eat."

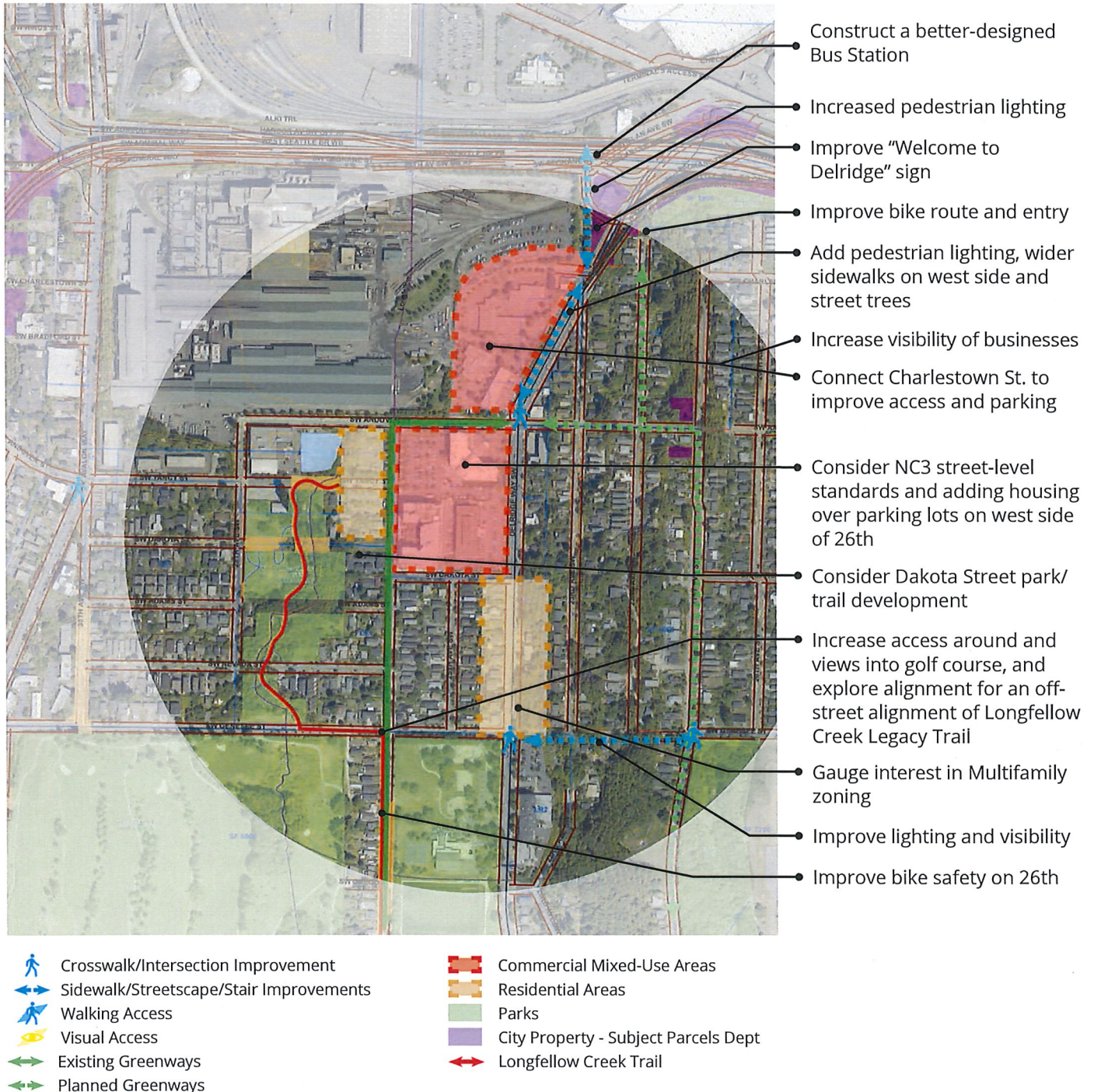




# ANDOVER JUNCTION KEY STRATEGIES

## Employment, Businesses and Neighborhood Shops & Services

- Complete specific Station Area Planning in coordination with the Sound Transit 3 project
- Create a welcoming and cohesive design for lighting, trees, way-finding, buildings, etc.
- Improve walking environment and connections to transit on SW Spokane St.
- Improve short-term business parking
- Support continued employment and encourage more neighborhood shops and services
- Consider zoning changes to encourage more dense, multifamily housing

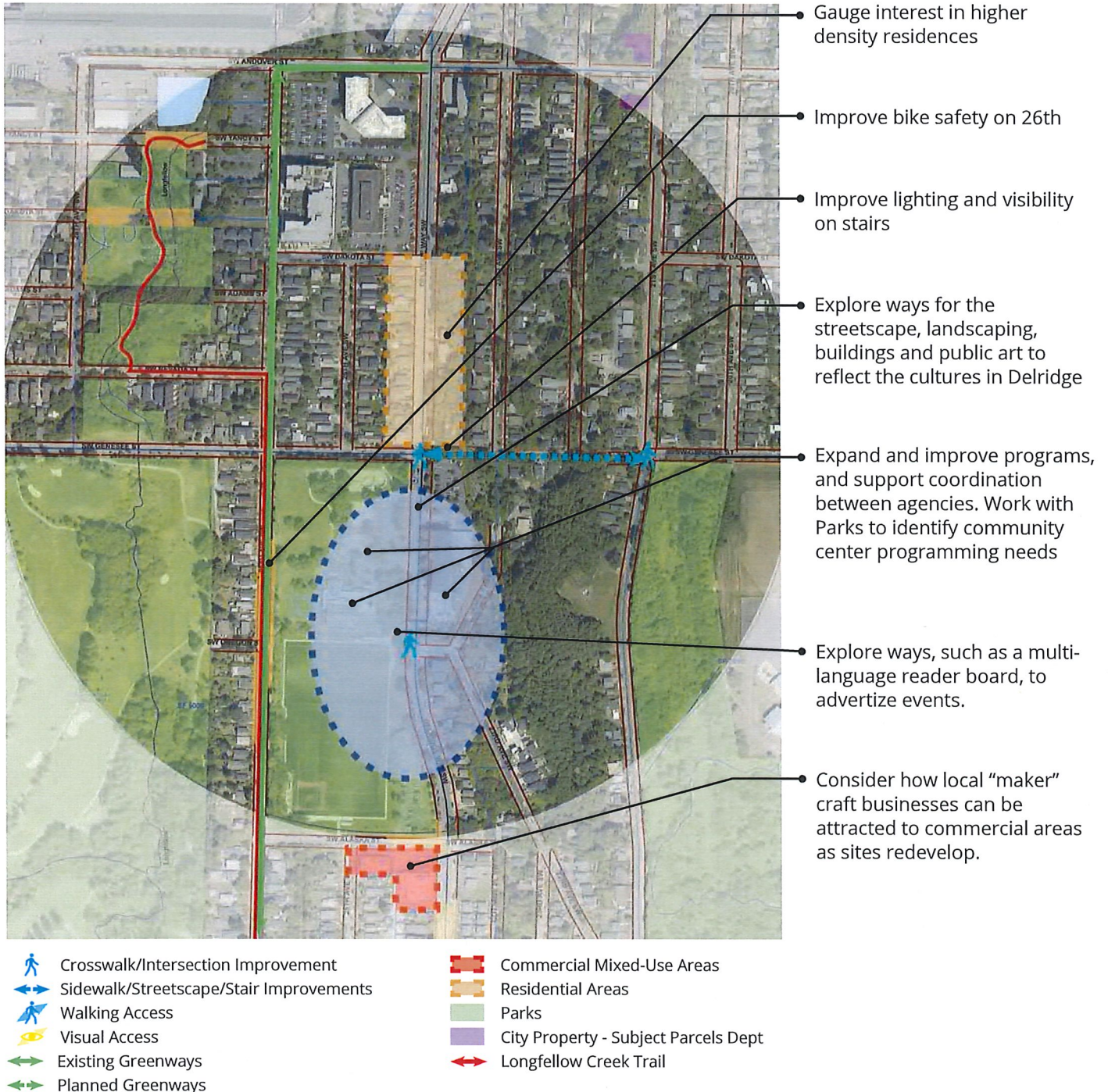




# DELRIDGE COMMUNITY CAMPUS KEY STRATEGIES

## Cultural Arts, Recreation & Services

- Complete specific Station Area Planning in coordination with the Sound Transit 3 project
- Improve visibility with design and art
- Focus programming and facilities to ensure they serve the entire community including historically underrepresented
- Improve physical connections (crossing of Delridge) between sites
- Support collaborations between the Delridge Community Center, Southwest Youth and Family Services, Youngstown, Camp Long and community groups

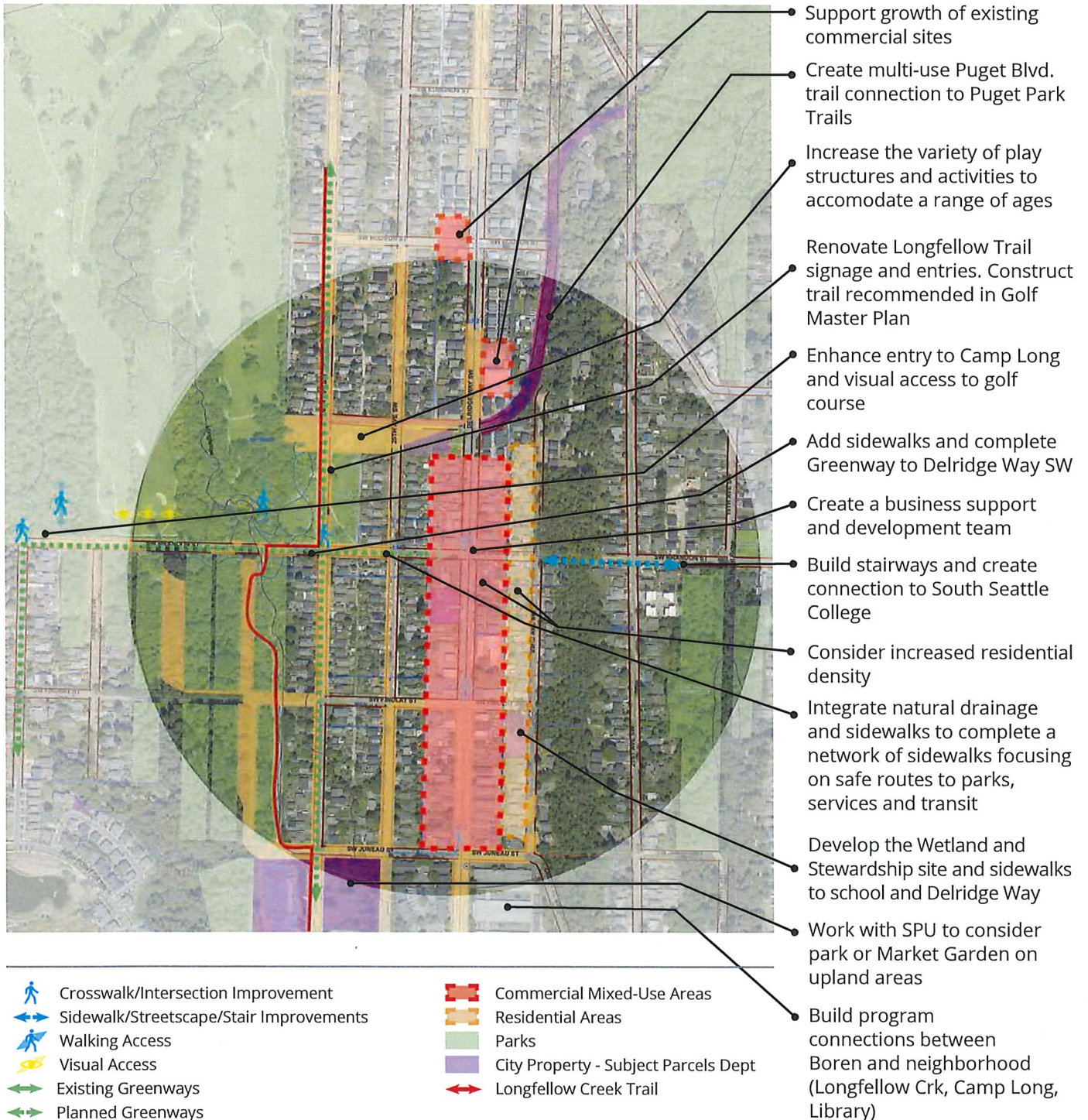




# BRANDON JUNCTION KEY STRATEGIES

## Community, Shops and Food Destination

- Create strong design identity with lighting trees, sidewalks and design guidelines, etc.
- Support Delridge Grocery, and OSE and HSD's continued work to increase affordable food access
- Create long-term seasonal affordable farmers market or stand
- Consider Market Garden element to augment P-Patch
- Support growth of food businesses like restaurants, Commissary Kitchen and Integrate food trucks into events
- Prioritize and focus sidewalk and green stormwater improvements along streets such as Brandon, 26th, Juneau & Findlay to make better connections to community destinations transit, parks, etc.

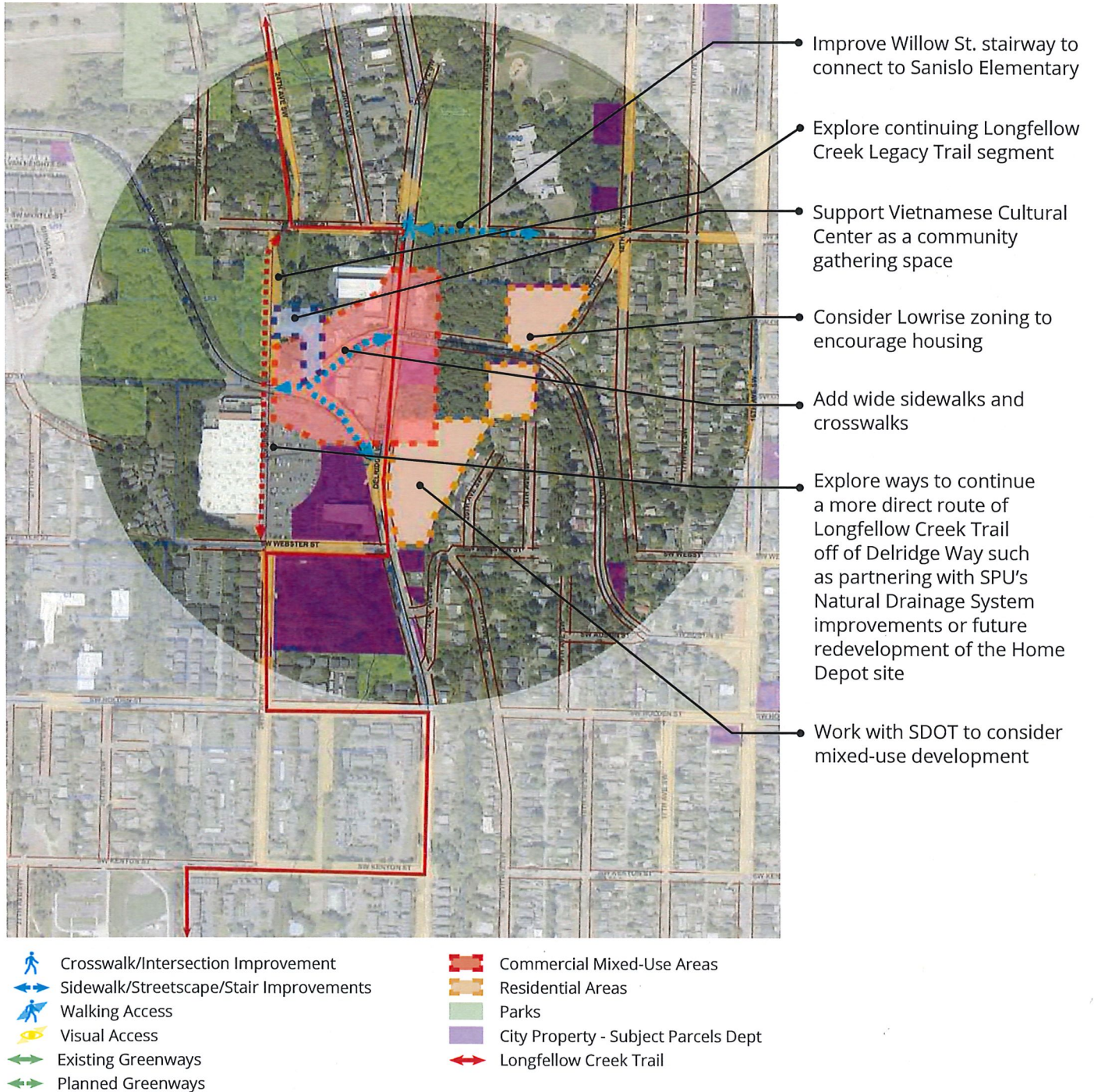




# SYLVAN JUNCTION KEY STRATEGIES

## Destination Commercial

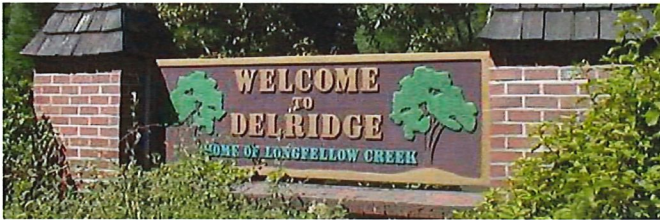
- Encourage new infill business development, and opportunities for pop-up retail or food trucks
- Improve Longfellow Creek Legacy Trail connections
- Consider options for SDOT parcels on east side of Delridge
- Support Vietnamese Cultural Center as gathering space
- Highlight and improve community policing, and continued interaction between Southwest Precinct and larger community





## Community Character & Identity

Seek to create special identities for unique districts or places, particularly the neighborhood anchors along Delridge Way, using distinctive and unique gateways, pedestrian amenities, streetscape, and other furnishings and designs. D-P5



The existing "Welcome to Delridge" sign greets people as they come off the West Seattle Bridge. Community member have suggested adding other signs at community entry points, and using a multi-lingual format to highlight that Delridge is home to many communities and cultures.

Strengthen the local Delridge business community by participating in public/private ventures to provide public benefits as appropriate to meet Delridge's long range goals. D-P6

Seek to develop a pedestrian oriented environment along Delridge Way that integrates adjacent storefront activities with transit, parking, bikeways, and walking areas. Seek to calm traffic on Delridge Way through the neighborhood anchors. D-P7

## Economic Development

Seek to create greater employment and shopping opportunities within the Delridge neighborhood. D-P25



- Through a community and City collaboration on the RapidRide H Line Project, or grant sources, design and fund a series of unifying and differentiating public design elements that reflect Delridge's diverse communities including:
  - Distinctive gateway or entry signage and improvements.
  - Overall design continuity by using shared streetscape elements such as lighting at transit stations, transit shelters and street trees; and
  - Designs and public art that reflect Delridge's cultural communities for each transit station using landscaping, furnishings, etc.
- Work through design review to complement the streetscape improvements by encouraging development that uses building materials or styles that create a strong visual identity that organizes the different elements of the neighborhood destinations into cohesive, pleasing identities.
- Improved access to transit stations for all travel modes; people walking, biking, and using transit.



- Assist business & land-owners to secure grants from OED and DON.



- Through the RapidRide H Line Project, explore opportunities for improved access to neighborhood destinations for all travel modes; people walking, biking, using transit & driving.



- Form an economic development committee that can act on the key issues and next steps identified by businesses through the business survey funded by the Neighborhood Matching Fund and Only in Seattle grant.



## POLICIES

Encourage local business development opportunities, particularly for small businesses that may be owned by or employ Delridge residents. D-P27

### Andover Junction

Seek to enhance pedestrian improvements and commercial services in the neighborhood anchor at Delridge and Andover. This anchor should serve as a major local employment center, while facilitating the flow of traffic through the node and onto the West Seattle bridge. D-P8

Undertake Sound Transit 3 station and station area planning and design to support equitable transit-oriented development including community-oriented commercial development, additional residential development, and improved access by biking, walking, and taking transit. A station access plan should also enable car drop-off at the station given the challenges to accessing the station by foot. (NEW)

### Delridge Community Campus

Seek to improve the "community campus" neighborhood anchor at Delridge and Genesee. This anchor should provide educational, recreational, cultural and social opportunities (and potentially increased housing) to the neighborhood, by sustaining, coordinating and improving programs offered by Youngstown Cultural Arts Center and its tenant organizations, Southwest Youth and Family Services, and Delridge Community Center. D-P9 Edited



Youngstown Flats is North Delridge's only new, large-scale apartment building. Community engagement in the design helps it successfully fit into the neighborhood.

## STRATEGIES

- Develop an organizational framework for businesses to collaborate.
- Work with OED to facilitate connections with West Seattle Chamber, Ethnic Business Coalition, and Greater Seattle Business Association, etc.

- Through landscaping improvements and signage, improve visibility of businesses in the office park.
- Explore ways to provide better access and shared parking.
- Consider, during station area planning, zoning to encourage more residences and shops.
- Seek to improve walking connection to the route 21 and 37 bus stops under the West Seattle Bridge.
- Work with the City and Sound Transit to plan for equitable transit oriented development around the Delridge light rail station.

- Improve at-grade access across Delridge Way SW at SW Oregon St. to better connect community destinations.
- Engage underrepresented communities to further identify and assist them with acting on their interests for programs and facilities.
- Support Youngstown Cultural Arts Center to provide culturally diverse programming.
- Identify ways to improve identity and reflect Delridge's cultures in public art, streetscape, and multilingual signage.
- Explore zoning changes to increase opportunity for business and higher-density residential development.
- Work with the community center, Youngstown and SWYFS to increase year-round, outdoor activities (e.g. Tet celebration, luminaires lighting).
- Construct a new "Campus" marquee (programmable in multiple languages) that enables SWYFS, Delridge Community Center and Youngstown Cultural Arts Center to advertise events.



## Brandon Junction

Seek to improve the neighborhood anchor at Delridge and Brandon, through means including the continuation of the neighborhood commercial zone in the vicinity, along Delridge Way SW to SW Juneau Street. This anchor should provide neighborhood-oriented retail and personal services in addition to neighborhood-based city services (such as the Library) for the nearby neighborhoods and existing neighborhood businesses. D-P10



To support the vision of the neighborhood anchor designated at Delridge and Brandon, moderate density multifamily zoning is appropriate along both sides of SW Brandon Street between 23rd Avenue SW and 26th Avenue SW and along both sides of SW Findlay Street between 23rd Avenue SW and 26th Avenue SW. D-P11



- Consider a focus (such as food) specific to Brandon – supporting existing efforts and businesses, growth of more international restaurants and stores, and explore creating food truck nights.
- Explore grants for amenities (i.e. signs, lighting, benches, etc.)
- Activate Puget Blvd. Park and develop a Puget Boulevard Trail connecting Brandon node to Puget Creek Trail.
- Provide more space and facilities for gathering at parks and restaurants.
- In coordination with the community organizations like the West Seattle Transportation Coalition and neighborhood councils, work with the RapidRide H Line Project, other SDOT programs such as Safe Routes to Schools, Your Voice - Your Choice, and Neighborhood Street Fund, and Seattle Public Utility's Natural Drainage Systems program to prioritize constructing sidewalks on all streets within one quarter mile of SW Brandon Street and Delridge Way SW. Complete improvements along SW Brandon Street that provide sidewalks and natural drainage between Camp Long Entrance at 30th Avenue SW and 23rd Avenue SW.
- Consider parking approaches including: short-term on-street parking, load zones and shared parking among businesses.
- Connect 26th Avenue SW greenway via SW Juneau Street to Delridge Way SW.
- Locate bus stops to provide optimal transit access to library, school and parks.



- Consider zoning to encourage more shops and residences.
- Work with the City to identify how application of the Mandatory Housing Affordability provisions can best support the community's desire for additional residents and businesses.



## POLICIES

### Sylvan Junction

Seek to improve the neighborhood anchor at Delridge and Sylvan/Orchard Ways, which will provide goods, services, entertainment, and transit services to the West Seattle area. D-P12

## STRATEGIES



- Install sidewalks on SW Sylvan and SW Orchard Street and improve the SW Willow Street stairway.
- Highlight & improve community policing & connectivity between SW Precinct & larger community.
- Increase the number and diversity of businesses.
- Create a better route for Longfellow Creek Legacy Trail.
- Work with private and public property owners to identify opportunities for additional businesses and homes.
- Support the Vietnamese Cultural Center as a community gathering space.
- Create multi-language wayfinding and "Welcome to Delridge" signage.



The area between the Vietnamese Cultural Center and adjacent bus stops would benefit from sidewalks and green stormwater improvements to ensure safety for all modes.



# C ACCESS TO AFFORDABLE, HEALTHY FOOD

Promote a healthy Delridge by increasing access to affordable healthy food for families of all incomes.

## DISCUSSION

Many in Delridge face geographic, transportation, and economic barriers to finding healthy food for themselves and their families. North Delridge has a rich community and many great assets, but does not have any grocery stores along the four-mile corridor. Transit service is limited, and the neighborhood itself is framed on the East and West by two tall ridges making it hard to walk or bike to and from the neighborhood.

Access to affordable healthy food is both an important element of reducing health inequities – along with community economic opportunity and opportunities for active living – and of creating the complete neighborhood that the community desires. The vision encompasses a range of approaches including gardening and education opportunities, retail outlets, improved transportation, and support services in order to establish a network of food access.

Many of the strategies in this section build on existing community-led efforts: the Delridge Grocery Cooperative; the Little Red Hen Project; the Delridge P-Patch; the Puget Ridge Edible Park; and the Delridge Wetlands and Stewardship project.



The Delridge Stockbox store (now closed) provided an array of groceries and home supplies. It opened as a temporary prototype in the Fall of 2011, running out of a 160 square foot container in the parking lot of the Westhaven Apartments.



"We just need a grocery store."



## GOALS

- A community where residents have the economic ability, mobility and choices to access healthy, affordable and culturally appropriate food. (NEW)

## PRIORITY STRATEGIES (1-3 YEARS)

- Support the development of a grocery store serving north Delridge.
- Work with Seattle's Human Services Division, West Seattle Food Bank, retailers and others to coordinate access to affordable healthy food.
- Support opportunities to learn about farming and cooking including the Little Red Hen project and the Delridge Wetlands and Stewardship project.

## TAKING ACTION

- The community came together in 2009 to form the Delridge Grocery Cooperative whose mission is to grow community by providing local, sustainably grown whole foods, at affordable prices, to the residents of the Delridge area. During the summers of 2015 and 2016 the Seattle Human Services Department provided assistance to the Co-op's summer farm staff. Community members can join the Co-op here - <http://delridgegrocery.coop/>
- OED, OSE, and OPCD are identifying resources and programs to support the Co-op.
- The Delridge P-Patch and Little Red Hen project offer opportunities for gardening and learning about growing food.
- The Delridge Wetlands and Stewardship project will engage youth in learning about gardening.
- Seattle Human Services Department has helped fund the Delridge Grocery Cooperative's farm stand for several years.

"Start a food truck night on Delridge Way."





## POLICIES

Strive to increase opportunities to access affordable healthy food along Delridge Way SW near Brandon Junction or Sylvan Junction. (New)



A survey of more than 500 Delridge community members demonstrated the willingness of Delridge residents to join a co-op and buy their fruits and vegetables from a produce stand instead of a full-service grocery store. The Delridge Co-op is currently working to secure funding and build out their retail space at the DESC building at Delridge Way SW and SW Findlay Street.

## STRATEGIES

- Convene an interdepartmental team that will work with the community to pursue development of a grocery store serving north Delridge.
  - Support Delridge Grocery Cooperative's efforts to develop its financial and operational feasibility.
  - Consider establishing a partnership with a non-profit that can receive public grants for aspects of the Co-op that benefit the community.
  - Interview smaller grocery outlets to understand locational and economic opportunities and barriers to opening a grocery store.
  - Identify City-owned and private sites appropriate for development of a grocery and other compatible co-located uses.
  - Review area zoning to determine if there is sufficient inventory of suitable sites, and review standards to identify those that would support a grocery or which might unintentionally support fast food establishments. Evaluate the feasibility of a "Grocery Store and Sit-Down Restaurant Incentive" package that creates economic incentives for attracting healthy food retailers.
- Pursue financing options such as the federal Healthy Food Financing Initiative (HFFI).
- Explore opportunities to assist markets that serve Vietnamese, Somali, Cambodian and Latino communities in the neighborhood.
- Work with grocery delivery businesses like Amazon and Safeway to deliver food in food deserts, to waive membership fees for low-income families, and to accept EBT for transactions.
- Explore the development of, or partnership with a Food Hub that could incubate food-related businesses in Delridge.
- Advocate for funding food programs Women Infant & Children (WIC) & Supplemental Nutrition Assistance Program (SNAP).
- Encourage collaboration among community resources (e.g. Delridge Grocery Cooperative, Little Red Hen Project, Delridge P-Patch) and agencies to develop short and long-term strategies to improve access to affordable, healthy food.



## POLICIES

Promote and support access to urban farming and education about growing food in ways that are accessible by Delridge's diverse cultures. (NEW)



The Little Red Hen Project provides the Delridge community with a way to grow and maintain a backyard food source. The Little Red Hen currently maintains plots at the Delridge Community Center.



The Delridge P-Patch was established in 1974. It provides 30 plots for community members to grow vegetables or flowers. Currently there is a 1 to 2 year wait for a plot.

## STRATEGIES

- Promote urban farming by creating a new farm, and education and assistance for farming.
  - Identify strategies to use city owned lands to expand Market Gardens (gardens where people can grow produce to sell).
  - Work with the Farmers' Market Alliance and others to create a centrally-located, affordable farmers market serving Delridge.
  - Integrate garden education programs into markets and gardens.
  - Work with DON and other organizations to consider expansion of the Delridge P-Patch along Puget Boulevard.
  - Support DNDA's work to establish and program the Wetlands and Stewardship project at the old Seattle City Light substation at SW Findlay Street and 23rd Avenue SW.
- Explore creating a food truck row on unused parking lot and include food trucks at community events.
- Use the Delridge Community Center kitchen to provide healthy food cooking instruction and community building.
- Support food programs especially focused on youth and health.
- Support "Fresh Bucks" for use at farmers markets and expand their use to include small retailers and co-ops.
- Support Youngstown's creation of a commercial and teaching kitchen.



# D ACTIVE TRANSPORTATION CHOICES

Ensuring Delridge Way SW & adjacent streets support safe & predictable movement of people & goods.

## DISCUSSION

Although Delridge Way SW is a defining element of the neighborhood, it is not the community's only focus for transportation improvements. Access east and west is greatly constrained by hillsides and greenbelts that limit travel. Only 52% of North Delridge streets have complete sidewalks. There are only five streets that link the 3-mile stretch of Delridge Way SW in the planning area to 35th Ave. SW.

The community seeks efficient, effective, and innovative solutions that make it easier for all to get to parks, friends, shops, regardless of how they travel to and through the area.

- Improve connections between Delridge and surrounding neighborhood business districts where residents shop and obtain needed services.
- Create frequent and reliable transit connections to employment centers.
- Provide safe routes to local schools, parks and food within the neighborhood.
- Increase the focus on transit, bicycle, and pedestrian opportunities within the community, knitting the neighborhood to all elements of the multimodal corridor.
- Manage on and off-street parking to provide access to businesses along Delridge Way.
- Transform Delridge Way SW into a safer and healthier public space with predictable network connections for all travelers, while supporting and initiating economic development and upgrading transit service.



"Delridge should be safer for people walking, biking and riding the bus."



## GOALS

- A transportation system that provides convenient access for local travel within the neighborhood, and access to principal employment, shopping and entertainment activities in the surrounding area. D-G4
- A community that provides safe, convenient, and efficient bikeway access to local and regional destinations. D-G5

## PRIORITY STRATEGIES (1-3 YEARS)

- Work with SDOT to complete the RapidRide H Line Project.
- Complete and connect neighborhood greenways as shown in the Bicycle Master Plan.
- Pursue Neighborhood Street Fund Program grant to improve SW Brandon Street between 23rd Avenue SW and Camp Long.
- Work with the City and Sound Transit on light rail station siting and station area planning.

## TAKING ACTION

Work through the RapidRide H Line Project, and grant sources, to design and implement transportation improvements that support Delridge's vision for community development, improved transit and non-motorized transportation choices.

- Prioritize pedestrian and bicycle connections to transit and community destinations.
- Explore feasibility of the community "boulevard" vision with center landscape islands in relation to mobility needs along the corridor.
- Retain frequent transit stops to offset the incomplete street and sidewalk network.
- Pursue grant funding to complete urban design elements not funded through the RapidRide H Line Project.
- Coordinate with SPU's Longfellow Creek Natural Drainage Systems project.

"Create an urban design plan for Delridge Way."





## POLICIES

Seek to design Delridge Way SW as a multimodal corridor that supports Delridge's vision for community development, with improved transit and non-motorized transportation choices. (NEW)



Community and agency staff discuss station siting options at a Sound Transit workshop

Encourage high quality bus service with effective and efficient transfer opportunities, and facilities that provide adequate safety and security. D-P13

Seek to use park-and-ride lots for multiple purposes such as serving as off-peak period recreational trailheads. D-P14

Strive for high quality roadway maintenance to ensure safe and efficient travel for pedestrians and vehicles. D-P15

## STRATEGIES

Work with SDOT to complete the RapidRide H Line Project to identify a preferred design that supports Delridge's vision for community development, improved transit and non-motorized transportation choices.

- Prioritize pedestrian safety near Delridge schools (Safe Routes to Schools program), to the services, parks and activities in the Delridge Community Campus, to major transit connections and to other community destinations.
- Explore feasibility of the community "boulevard" vision with center landscape islands in relation to mobility needs along the corridor.
- Coordinate RapidRide H Line Project with SPU Longfellow Creek Natural Drainage Systems project.
- Identify funding and potential phased implementation of improvements that are not funded through the Move Seattle Levy, including urban design elements and signage that reinforce the four neighborhood destinations.

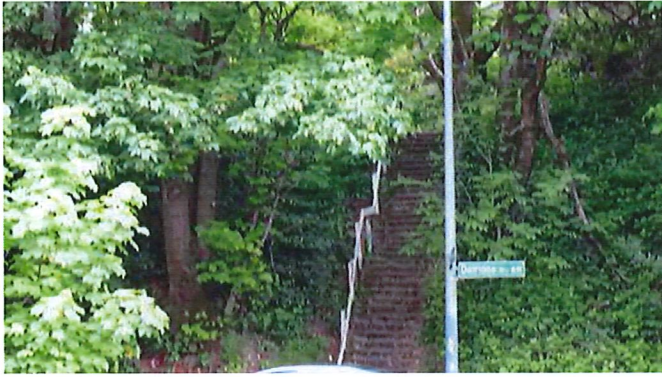
- Through the RapidRide H Line Project, improve transit service that achieves Bus Rapid Transit frequency & reliability.
- Engage in and advocate for (testify at Sound Transit Board and King County Council discussions) transit and non-motorized access to the planned Sound Transit 3 station at the north end of Delridge Way SW, and to integrate RapidRide and other bus connections.
- Advocate for any bus hour reallocations associated with RapidRide, and future light rail service to be retained in the neighborhood and serve to improve east/west connections
- Improve transit routes linking Delridge to surrounding areas – especially east/west corridors.

- Report vegetation, trash and other conditions that create obstacles to using sidewalks to SDOT's Street Maintenance Division at (206) 386-1218, SDOT's Illegal Dumping Hotline at (206) 684-7587. Or download the Find-it-Fix-it App.



## POLICIES

Maintain and improve unopened rights-of-way to provide walking and biking connections where roads are not feasible. (NEW)



## STRATEGIES

- Work with the City grant and levy programs to implement community priorities including:
  - Maintaining and upgrading existing stairs on SW Genesee Street, SW Juneau Street, SW Holly Street, SW Myrtle Street, SW Holden Street; and the Bataan Park stairs that connect High Point, Delridge and Boren K-8 STEM;
  - Improving vegetation management to increase visibility of stairways and along stairs.
  - Building a stairway on SW Brandon Street, east of 23rd Avenue SW, connecting Brandon Junction to the Puget Ridge Edible Park.
  - Opening SW Charlestown Street west of Delridge Way for walking and biking access to the industrial park.
  - Encouraging stewardship of Genesee, Juneau, Bataan, Holly, Holden and Myrtle street stairs, working with neighborhood groups, Boy Scouts and other community organizations.

Increase the number of streets with sidewalks, implementing the Pedestrian Master Plan and community priorities for new sidewalks. (NEW)

- Work with grant opportunities and capital projects to complete sidewalk improvements that provide connections to transit and other community destinations, such as schools, shops and services, parks and activities.
- Pursue Neighborhood Street and Park Fund and Your Voice, Your Choice grants to complete construction of sidewalks and drainage along SW Brandon Street between 23rd Avenue SW and Camp Long, and along SW Sylvan and SW Orchard Streets between the Vietnamese Cultural Center, the adjacent bus stops and Delridge Way SW..
- Work with the Safe Routes to School Program to fund safety improvements on school walk routes.
- Seek to create an SDCI/OPCD/SDOT working committee to consider options for designing, funding and constructing sidewalks along streets where individual, small developments have "no-protest agreements" to participate in future sidewalk Local Improvement Districts, and for minimizing future occurrences where such agreements are allowed in place of providing sidewalks at the time of construction.



## POLICIES

## STRATEGIES

Implement a complete network of all ages and abilities bicycle facilities that provide connections to local and regional destinations. (NEW)



- Enhance the 17th/21st Avenue SW Greenway connection to the West Seattle Low Bridge trail by widening the intersection of the trail and street at north end of 22nd Avenue SW or improving visibility.
- Develop new bicycle facilities on unopened roads such as 24th Avenue SW near SW Sylvan Street

Maintain and expand trails in Delridge to provide additional connections to parks and other destinations throughout the neighborhood. (NEW)



- Create a path along Puget Blvd. that links Longfellow Creek Legacy Trail and Cottage Grove Park through Puget Park to Puget Ridge, Puget Creek, the West Seattle Greenbelt, and Herring House Park.
- Build on neighborhood greenways objectives by making clear and safe connections to Pathfinder, Sanislo and Boren schools, the Delridge Branch Library, Youngstown Cultural Arts Center, Southwest Teen Life Center and SWYFS.
- Create safe and clear connections between the Greenways and Delridge Way SW.
- Working with Nature Consortium, Duwamish Alive and other organizations, encourage, promote and train neighbors to steward trails. Encourage a focus on trails that connect neighborhood destinations.

Partner with organizations such as Feet First school-based programs and the community center to offer culturally responsive programs that promote bicycling and walking. (NEW)



- Build a resource of Delridge Neighborhood Walking Ambassadors to increase walking, and visibility of walkers. Network with non-English speaking communities, and perhaps offer financial incentives, to conduct walks with native-speakers.
- Refer to the 2009 walk audit completed by FEET First and residents.
- Promote the programs, such as the Cascade Bicycle Club's Major Taylor Project at Chief Sealth High School and Denny International Middle School, to introduce youth of color to cycling and create an inclusive bicycling culture.
- Work with the Delridge Community Center Advisory Council to include bicycle education programming.
- Develop safe bicycle routes through parks and provide "end-of-ride" facilities at park destinations (e.g. bike racks, covered areas, tool stations).



Page intentionally blank



# E A HEALTHY LONGFELLOW CREEK WATERSHED

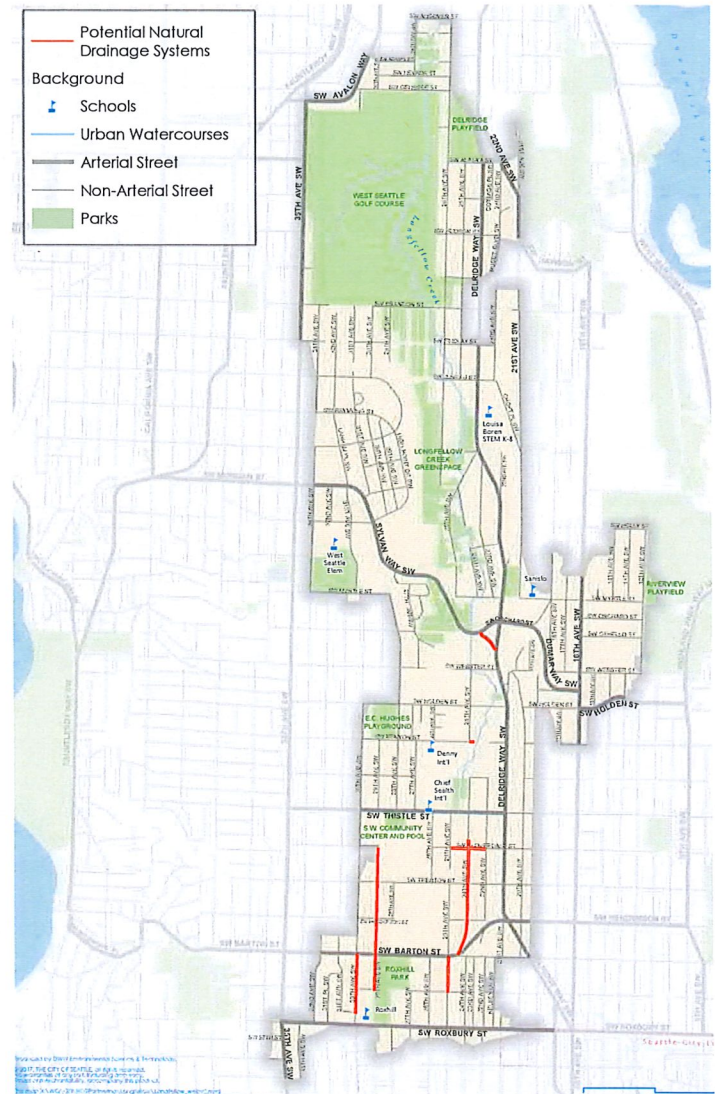
Create green elements that welcome the rain: storing, draining, & cleaning it, sustaining the natural & built environments.

## DISCUSSION

Delridge is a place where the community and the natural environment are integrated. Many of the hillsides have wet areas, and the Longfellow Creek Watershed has been susceptible to flooding. In most of the Longfellow Creek Watershed, pollutants enter the creek every time it rains, and in some parts of the watershed, the combined sewer system, on average, exceeds the number of overflows allowed under Federal regulations. The city has responded by developing the Plan to Protect Seattle's Waterways.

The community, in partnership with the city, takes pride in and provides the stewardship needed to help maintain this natural environment. This partnership also fosters education opportunities for children and students who use places in the watershed as "natural classrooms". Our goal is to complete and improve the open space network in Delridge in a way that integrates the residential and business environments with natural areas for public access and wildlife habitat. Natural Drainage Systems (NDS) can also be integrated with the right-of-way network to provide safer, more attractive corridors for many modes of travel while treating pollution from road runoff.

## Longfellow Natural Drainage Systems: Opportunities



"Address flooding along neighborhood roadways."



## GOALS

- A Delridge community that is integrated with the natural environment, where open space and natural areas are preserved, interconnected, well maintained, and safe for wildlife and residents including children. D-G1

## PRIORITY STRATEGIES (1-3 YEARS)

- Apply City regulations and coordinate infrastructure improvements to ensure that rainwater and surface water along hillsides and adjacent to Longfellow Creek are handled and conveyed to reduce impacts and protect the environment.
- Prioritize Natural Drainage System improvements to improve drainage and pedestrian connections to neighborhood destinations like schools, parks and transit.
- Celebrate its 25th Anniversary by renewing the Longfellow Creek Watershed Action Plan as a community and City partnership for improving the health of the watershed.

## TAKING ACTION

- Neighbors are working with Seattle Public Utilities' (SPU) NDS project (part of the Plan to Protect Seattle's Waterways) to identify priorities for eight to ten blocks to construct natural detention facilities and accompanying sidewalks where they currently don't exist.
- Homeowners along 24th Avenue SW, south of SW Graham Street are working with SDOT, SPU, and Seattle Parks and Recreation (SPR) to design and construct improved driveway crossings of Longfellow Creek as well as improve the flow of the creek.
- As part of the Wetlands and Stewardship Project, DNDA and community members are working with SPU and SDOT to address drainage and sidewalks along 23rd Avenue SW and SW Juneau Street.

"Renew the Longfellow  
Creek Action Plan."






## POLICIES


Seek to protect from development: natural open space areas, wetlands, drainage corridors, and woodlands that contain prime wildlife habitat along the Longfellow Creek, Puget Creek, and Duwamish River drainage corridors and valley hillsides. D-P2


Work with community groups and neighborhood stakeholders to provide stewardship of the natural environment using appropriate city resources in partnership with community organizations, schools, and others. D-P4

Seek to reduce pollution into Longfellow Creek by installing Natural Drainage Systems in the public right-of-way, where feasible, as part of the Integrated Plan. (NEW)

## STRATEGIES

- 
- Work with Seattle Department of Construction and Inspections (SDCI) to get timely notice of development.
  - Encourage and incentivize natural drainage & other innovations to address impacts of new development.
  - Work with SDCI to identify solutions to minimize downhill flooding risks resulting from new development on undeveloped hillsides.

- 
- Reconvene a Longfellow stewardship group and create a program to celebrate the 25th anniversary of the Longfellow Creek Watershed Action Plan and renew it as a community and City partnership to improve its health.
  - Work with community partners (e.g. Duwamish Alive, Green Corps, Green Seattle Partnership, Puget Soundkeeper Alliance and the Nature Consortium) to identify projects and funding partnerships that improve Longfellow Creek, Puget Creek and other habitat areas.
  - Foster partnerships with schools, like the one with Boren K-8 STEM developed as part of DNDA's Wetlands and Stewardship Project, to build support and expand education about environmental stewardship and growing food.
  - Work with the SPU, SPR, King Conservation District – Seattle Community Partnership Grant, the Neighborhood Matching Fund & others to develop and finance projects that improve natural environment and raise awareness about environmental stewardship.
  - Identify ways to provide Delridge youth with opportunities through the Youth Green Corps and other avenues to explore career paths, and gain practical experience and job training.
  - Spread information about neighborhood clean-up days at community events.

- 
- Where possible through the NDS Program, prioritize locations where drainage & walking improvements link to transit, schools and other community destinations.



## POLICIES

Seek to increase construction, by new development, of right-of-way improvements that collect and convey stormwater, and improve pedestrian mobility. (NEW)

## STRATEGIES



- Advertise how and where to report drainage issues to the City, such as Find-it-Fix-it App.
- Mitigate drainage/flooding implications when issuing land use and street improvement permits in priority areas.
- Explore ways to coordinate public street improvements with private development to expand sidewalk and drainage projects.
- Coordinate Delridge Way SW Multimodal Corridor Study with SPU Longfellow Creek Natural Drainage Systems project & the Healthy Delridge Parks Plan to create integrated networks.



SDCI's stormwater code protects people, property, and the environment by controlling how rain water runs off of streets, buildings, and parking lots. Stormwater runoff can cause flooding, landslides, and erosion that can damage our homes, businesses, and property. Runoff carries oil and grease, fertilizers, pesticides and other toxic chemicals to our waterways. In 2016, SDCI updated the code to:

- Improve stormwater management for new development, including on-site stormwater management;
- Improve the Construction Site Stormwater Runoff Controls requirements;
- Clarify Pollution Prevention and Operation and Maintenance; and
- Update the Source Control and Water Quality Treatment Practices.



# F SUPPORTIVE PARKS & CULTURAL FACILITIES

Preserve, create & activate parks and cultural facilities for the health of Delridge's community and environment.

## DISCUSSION

Delridge's parks and cultural facilities are the neighborhood's strongest assets. Preserving and strengthening these increases opportunities for residents to lead active lives, and supports social cohesion - factors that support the health of the Delridge community. This section identifies strategies that will help Delridge's parks and cultural facilities play a lead role in reducing health inequities.

From the beginning of the planning process, people talked about how much they value their parks and cultural facilities. They also shared ideas about how these facilities could better meet their needs and support whole community health. Specific themes emerged through engaging historically underrepresented and highlight opportunities to reduce the health inequities they experience. People value community and public facilities such as Vietnamese Cultural Center, Youngstown Cultural Arts Center, the Delridge Community Center, Camp Long and Delridge Library, as well as open spaces, parks and trails. People of color provided specific ideas about how parks and cultural facilities could better meet their needs, such as lower fees for classes and easier scholarship applications, and producing more cultural events. Youth shared several common concerns about safety - especially at night, and improve access to Delridge sports facilities by local sports leagues focused on immigrant youth. We also learned that some non-English speaking residents were unaware of many parks resources.

## VISION FOR PARKS AND CULTURAL SPACES

Delridge's Parks, open spaces, trails, community centers, cultural and art facilities are incredible assets that are cherished and supported by the community and City. They play a lead role in supporting healthy individuals and families, resilient communities, and a sustainable and supportive environment for all residents of Delridge.

Parks, playgrounds, playfields and facilities are located nearby residents. They are accessible by safe and attractive walking, biking and transit routes. Playgrounds at schools or in parks are within walking distance for most residents.

Park facilities make it easy to lead a physically active life. Play and exercise equipment attract tots, teenagers, parents, and seniors. Picnic benches, playgrounds, and water parks are located to promote gatherings and enable different ages to



Delridge Community Center is a powerful resource providing a number of supportive recreational, educational and cultural programs.

play near one another. Athletic fields, ball courts, and the golf course users reflect the local community by supporting local leagues and providing affordable rentals.

The Delridge Community Center, Youngstown Cultural Arts Center, Southwest Youth and Family Services, Camp Long and Delridge Branch Library host complimentary services, classes and cultural activities. Classes and programs respect the cultures and interests in Delridge. They are enjoyed by people of different ages and from different backgrounds. Diverse communities are engaged in developing classes and fee structures support broad participation. Cultural celebrations and activities sustain communities and create opportunities to bring different cultures together and strengthen the broader neighborhood.

Well used and maintained trails link Delridge's parks and open spaces and link Delridge to surrounding neighborhoods and the West Duwamish waterway. Healthy open spaces support habitat and offer local learning places for school kids. Opportunities for gardening, food production, and learning about urban agriculture are integrated to provide recreation, connect neighbors and sustain diverse sources of healthy food.

A network of community and City partnerships and financial resources provide the support needed to program, manage and maintain these assets. The community partners come from a variety of backgrounds and youth groups play a large role.

Pages 52 and 53 illustrate the overall vision and a more specific focus on the Brandon Junction area.



## FRAMEWORK FOR ACTIONS

The recommendations in this section follow an organizational structure developed by Change Lab Solutions, a non-profit focused on policies, strategies, and environmental changes that improve health outcomes. By pursuing integrated actions in each of these areas, Delridge's parks and cultural facilities are more likely to improve health outcomes for all residents.

### ENGAGE

Engage all community members, and specifically articulate the interests of marginalized people and communities who may bear the effects of health inequity.

Engagement produces outcomes that are better tailored to the needs and interest of all communities, and supports social cohesion. Social cohesion is the ties we have to others in our communities. Numerous studies have suggested that strong social ties are associated with better health and longevity, and can offer valuable protection against depression and mental illness.

City departments – especially Seattle Parks and Recreation (SPR) and its partners – have undertaken several recent initiatives that serve as models of inclusive engagement. The City should continue to expand efforts and partnerships that engage historically underrepresented communities in the development, programming maintenance and management of parks, green spaces, and cultural facilities.

The Diverse and Engaged Communities section includes many relevant strategies.

### SAFE ROUTES TO PARKS

Increase accessibility to parks and cultural spaces by foot, bicycle and transit.

Unfortunately, many of North Delridge's streets lack sidewalks. Scores of streets end at the edge of steep hillside, or large parks and open spaces. There are only three east-west through streets between SW Genesee Street and SW Orchard Street that connect the dell around Longfellow Creek with the ridges on either side.

Many of the ways to increase safe, active transportation options to Delridge's parks and cultural facilities, and other community destinations are integrated into the Active Transportation Section.

### LOCATE

Every resident should live within walking distance of a park, open space, or green space.

Delridge is a community with a greater percentage of children than most other Seattle neighborhoods. Overall, Delridge is well-served by open space, however only 45% of the planning area is within a quarter mile of a playground. Further, walking is inhibited in many areas due to missing sidewalks and discontinuous street network. Consequently, it is desirable that recreation opportunities are nearby.

### ACTIVATE

Successful parks in Delridge are ones that can be used and enjoyed by the whole community. They should provide a range of programs and amenities to serve all populations.

Careful selection of amenities like play features, benches, paths, and lighting can encourage use by a range of people. Community members specifically mentioned that the group of parks in the Brandon Junction area including Greg Davis, Cottage Grove and Puget Boulevard Parks would benefit from a greater variety of amenities to attract a more diverse set of users. Programmed activities and art installations also increase the use of facilities. Events can bring people to parks periodically as well as encourage them to visit a new park, and art—particularly social media-friendly installations—are ways to make parks more magnetic. Ongoing programming can create long-term use and activation. Together, physical improvement and programming can bring health benefits to users and participants, and can encourage more use by creating positive activity that deters misuse of parks.



## GROW

Parks that are ecologically healthy are also healthy for people in Delridge. Delridge has both an amazing wealth of natural areas and a history of community activism that stewards the health of these resources. Organizations Like Nature Consortium and Duwamish Alive bring citywide attention to them, and local organizations like Puget Ridge Community Council and North Delridge Community Council provide important partnerships and volunteer pools.

A Healthy Longfellow Creek Watershed, outlines many strategies to sustain this work. Delridge also has growing urban agriculture programs and spaces. The Puget Ridge Edible Garden, the Little Red Hen space at the Community Center, the Delridge P-Patch and the proposed Wetland and Garden offer opportunities to learn and garden. There is a growing awareness that gardening is one of the most popular recreational activities as well as a way to eat healthy.

## PROTECT

Residents living in "greener" surroundings experience "lower levels of fear, fewer incivilities, less aggressive and violent behavior" and fewer total crimes. This potential can be realized by improving activation, lighting and creating safe routes to parks. Delridge has great resources but community members have expressed concerns about safety in open spaces, and along trails and stairways that provide important connections and opportunities for exercise.

## FUND

A successful parks system and sustained cultural facilities and programs for Delridge need sufficient resources to support development, maintenance, programming and management. Given the amount of existing facilities, the need for acquisition funding will likely be less significant than funds for smaller scale physical improvements and sustaining facilities and programs.

Facilities like Camp Long, the Youngstown Cultural Arts Center, and the Delridge Playfield provide citywide as well as local benefits and should be supported by citywide funding sources. Citywide and local community investment in these facilities should support the local use. This means finding ways to orient programs to the interests and cultures in Delridge, schedule fields and facilities to be available to local groups, and offer rates that are affordable to residents.

## CONSIDERING DESIGN THAT AFFIRMS

The physical aspects of the built environment—although critical to a place's success—should be viewed alongside and perhaps even secondarily, to the creation of a welcoming social or cultural space. The most successful multicultural public spaces are not only the ones with that embrace good design and amenities, they are also ones that affirm people's identities and makes them feel welcome. A 'successful' multicultural environment is one where various group's sense of comfort is combined with good physical design to create an atmosphere that can nurture many preferences - a place that fosters social interaction while simultaneously creating distinct "spaces" where people can express their individual cultures. This supports expanded use of parks and cultural facilities, and increased opportunities for physical activity. It will also broaden the effect of these resources on reducing stress and promoting social cohesion and wellbeing.



"I love the kiddie pool"



## GOALS

- A Delridge community that is integrated with the natural environment, where open space and natural areas are preserved, interconnected, well maintained, and safe – for wildlife, and residents including children. D-G1
- Parks and recreation resources that meet the needs of all Delridge communities and provide opportunities to address health inequities. (NEW)

## PRIORITY STRATEGIES (1-3 YEARS)

- Establish Delridge as the place in Seattle where art, nature and culture collide, by coordinating and promoting Delridge Day, Arts in Nature and the Delridge Cultural Community Series.
- Foster partnerships between Seattle Parks and Recreation, and community organizations to expand awareness, and participation in parks and cultural facilities.
- Create a continuum of recreation and cultural opportunities for youth of all ages.
- Increase Delridge Community Center fundraising to broaden access to scholarships that help families access preschool and recreational programs.
- Improve walking access to Camp Long from SW Brandon Street, improve visual access to the West Seattle Golf Course, and construct the perimeter trail recommended in the Golf Course Master Plan.
- Support DNDA's work to build the wetland and agriculture education park on the Delridge substation site. Partner with Boren K-8 STEM to program the education components.
- Assist Delridge's diverse communities with sustaining their organizations, and developing cultural programs at the Community Center and Youngstown Cultural Arts Center.
- Improve trails and stairways to provide opportunities for physical activity, improve mobility, and enhance access throughout Delridge and to the West Duwamish natural areas.
- Work through capital projects and grants to increase safe routes to parks.
- Increase the diversity of play equipment and activities at Greg Davis and Cottage Grove Parks.

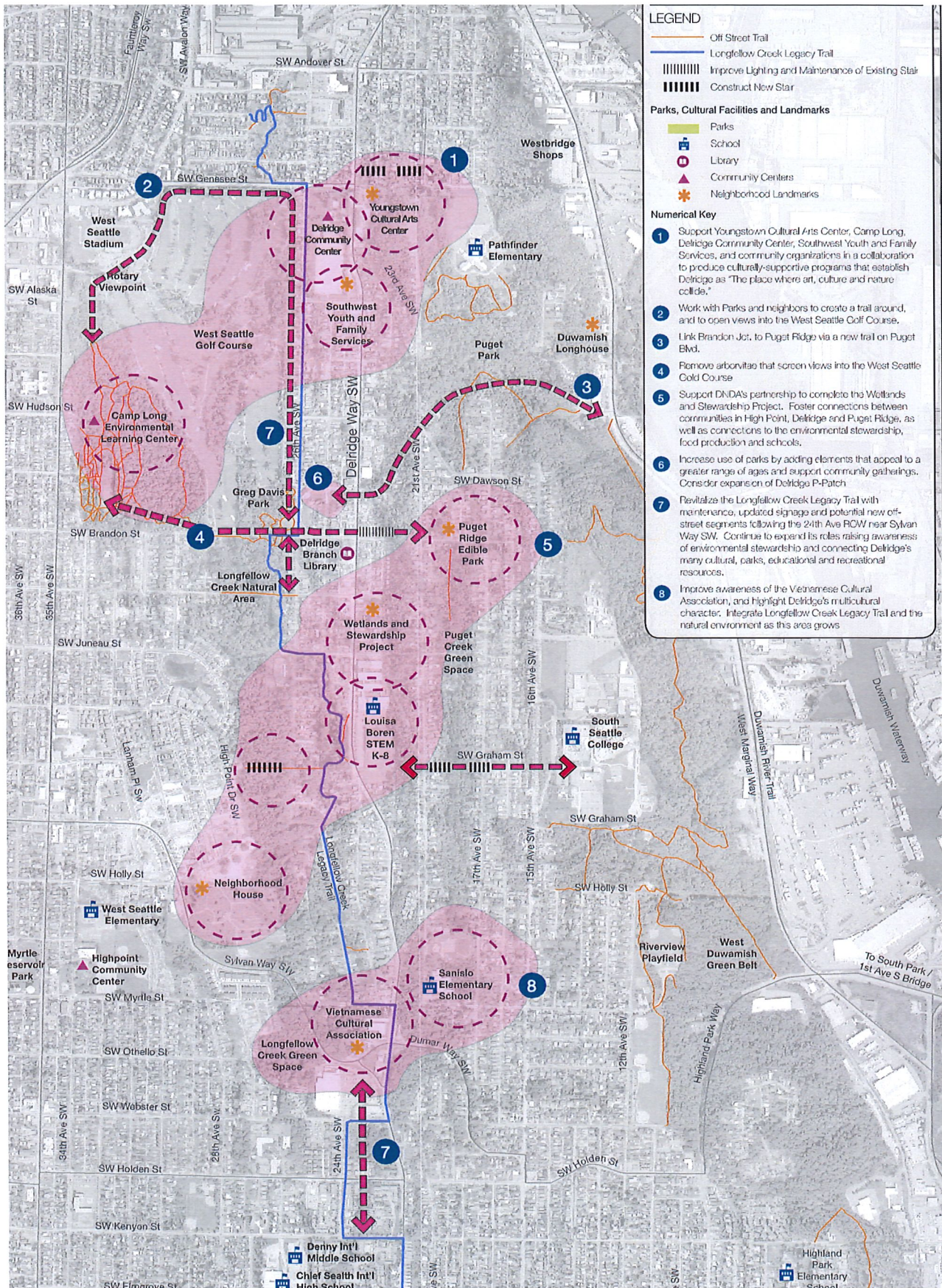
## TAKING ACTION

The Delridge Vision identifies strategies for parks, cultural facilities, and programs to address health inequities that are often concentrated in minority, immigrant and low-income communities.

- Delridge Day, Arts in Nature, and Delridge Neighborhoods Cultural Events Series organizers have begun discussion to coordinate their events throughout the year in order to engage all communities and raise the profile of all events.
- The Parks District provides funding for scholarships. The Delridge Community Center initiated an event to help low-income and non-English speaking households apply for scholarships .
- DNDA has acquired and is develop a vacant SCL substation for wetland, and is partnering with Boren K-8 STEM for urban agriculture learning.
- The Nature Consortium is launching restoration projects at several locations along Longfellow Creek.

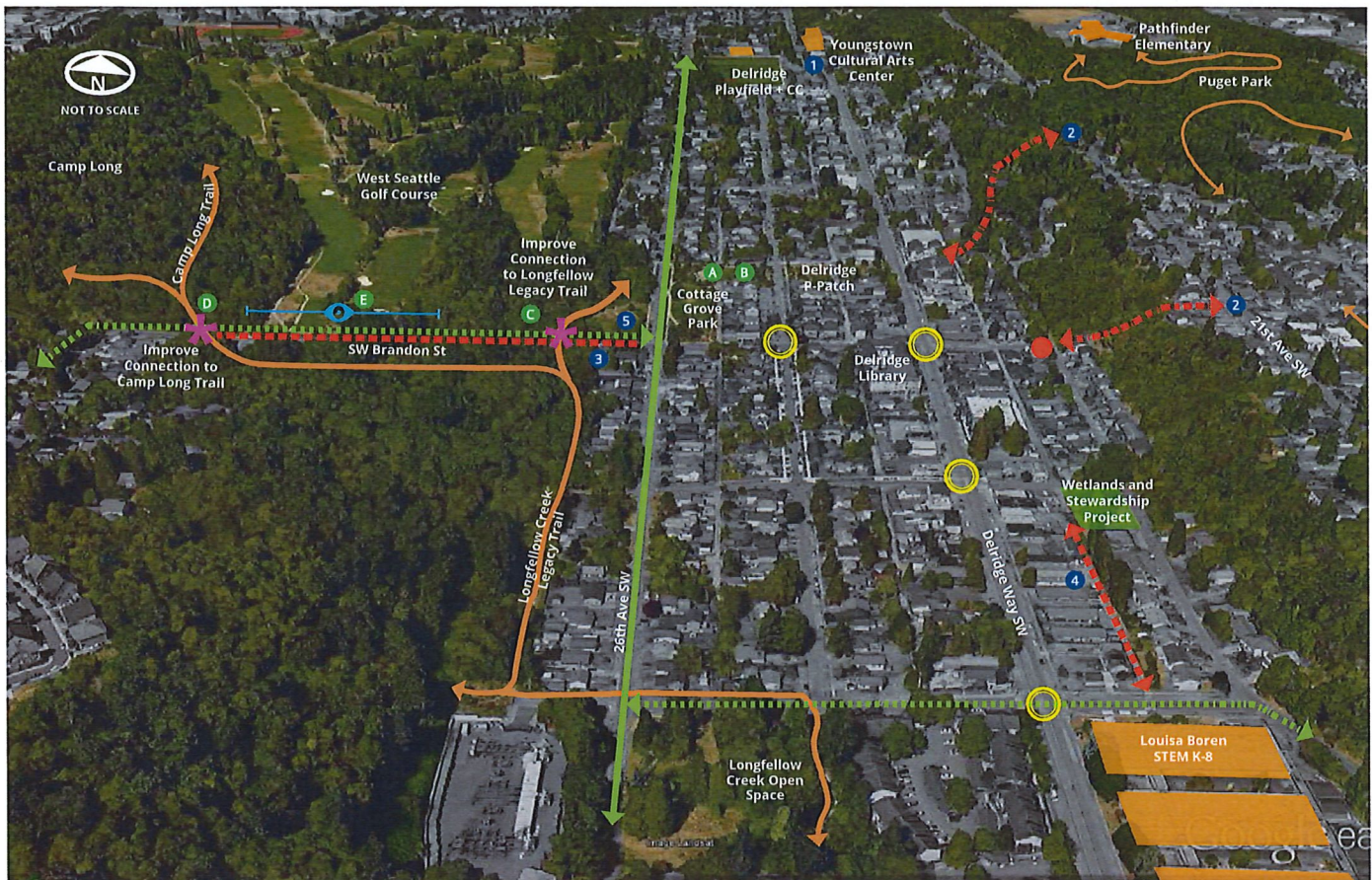


## OVERALL PARKS & SPACES VISION





## BRANDON JUNCTION FOCUS AREA



### LEGEND

	Existing Neighborhood Greenway		Off Street Trail		Schools & Community Hubs
	Planned Neighborhood Greenway		Priority Pedestrian Intersection Improvements		Increase Visual Access
	Potential Healthy Connectors		Improve Connection		Construct New Stair

- 1 Install crosswalks at SW Oregon St. to connect Youngstown Cultural Arts Center, Southwest Youth and Family Services and Delridge Community Center
  - 2 Work with Parks, SDOT and neighbors to link Brandon Jct. to Puget Ridge via a new SW Brandon St stairs and a trail on Puget Blvd.
  - 3 Complete trails and sidewalks along SW Brandon St. to link the Junction with Camp Long, parks and Longfellow Legacy Trail
  - 4 Make safe walking connections between the Wetlands and Stewardship Project, Boren STEM and Longfellow Creek and Open Space
  - 5 Complete the greenway connection along 30th Ave. SW and SW Brandon St.
- A Increase use of parks by adding elements that appeal to a greater range of ages and support community gatherings
  - B Consider expansion of Delridge P-Patch
  - C Increase visibility of entry to Longfellow Creek Legacy Trail
  - D Redesign entry and trail to Camp Long to strengthen its connection to Delridge
  - E Remove arborvitae that screen views into the West Seattle Golf Course. Construct perimeter trail in the Golf Master Plan.



## Inclusion & Capacity

Support year-round programming to help sustain Delridge's identity as a neighborhood where art, nature and culture are shared and sustained. (NEW)



Community member identifying priorities for parks and cultural spaces at Delridge Day.

## Grow



- Establish an identity of Delridge as "The Place where Art, Nature and Culture Collide." Coordinate and align Arts in Nature, Delridge Day, DNDA's Cultural Events Series and other Youngstown Cultural Arts Center events to establish year-round programs that sustain this identity.
  - Continue and expand Delridge Day as a signature event that draws visitors and raises awareness of parks and cultural assets.
  - Identify sustained funding sources for each event.
  - Work with the DNDA's Cultural Events Series steering committee to identify strategies that expand participation.
  - Consider integrating elements (like a 6k race) that can be a substantial revenue source for the Community Center Advisory Council.
- Use Public Involvement Plans to identify way to contract with organizations supporting marginalized communities. Consider the following steps as cost-effective ways to engage a representative cross-section of community voices:
  - Continue yearly Scholarship Application Nights, using Community Liaisons to conduct outreach, translations, and interpretation. Support fund raising to offer scholarships through DNDA, Youngstown and other cultural organizations.
  - Periodically review whether the community's programs are fully-accessible to people with mobility challenges, vision impairments, mental health conditions including drug and alcohol dependency and autism spectrum disorders.
  - Improve the affordability of programs to broaden participation.
  - Support fund raising to offer scholarships through DNDA, Youngstown and other cultural organizations.

- Support community awareness, and community and City stewardship of Delridge's parks and greenspaces.
- Strive to increase access to children's play areas and flexible play spaces that serve children.
- Partner with Seattle Public Schools to expand playgrounds in the neighborhood.
- Support partnerships between SPR and Seattle Public Utilities that can increase parks and open space.



## Communication



Volunteers work to clear invasive plants for the Wetlands and Stewardship Project

- Construct a new “Campus” marquee (programmable in multiple languages) that enables SWYFS, Community Center and Youngstown to advertise events.
- Hold orientation nights where interpreters can bring community members on tours of facilities, share programming opportunities, and answer questions.
- Build on Nature Consortium’s example of working with Neighborhood House to spread the word among East African women about a “Camp Out” at Camp Long, and Southwest Youth and Family Services’ “trusted advocates” who are employed to engage diverse communities.
- Reach out to organizations like the Vietnamese Boy Scout troop to engage them in activities at Camp Long as well as volunteer opportunities through programs like the Green Seattle Partnership.
- Build on racially and culturally diverse committees, like the one DNDA assembled for the Delridge Cultural Series, to strengthen relationships and communication among Delridge’s communities.
- Raise awareness about free community center and recreation field drop-in programs.
- Increase awareness of park and cultural facilities among non-English speaking communities.
  - Continue to translate fliers and advertising materials for parks and cultural facility events.
  - Invite non-English speaking community members to contribute to parks programs through food, music or other programs.
  - Hold orientation nights where interpreters can bring community members on tours of facilities, share programming opportunities, and answer questions.
  - Bring citywide attention to organizations and programs that support healthy living.



## POLICIES

### Locate

Use existing public spaces to provide recreational opportunities (especially play areas) for a range of children and youth. (NEW)



Community members stop by a display at Delridge Day to give their priorities for parks and cultural spaces.

Improve walking routes to playgrounds especially where playgrounds are located on school grounds where improvements can enhance safe school access. (NEW)

### Activate

Work with communities to add programming or improvements that are appropriate for the character of each park to increase overall use and opportunities for physical activity. (NEW)

## STRATEGIES



- Work with Pathfinder and Boren K-8 STEM to expand community use of their fields that are suitable for youth soccer and other sports.
- Broaden the types of play structures in Puget Boulevard Park to appeal to different ages.
- Work with the community to consider play elements at the Puget Ridge Edible Park.
- Work with Parks to identify ways to increase access by newer sports organizations (such as the East African Basketball League) to affordable indoor basketball courts so that youth do not need to travel out of their neighborhood as often.
- Work with the Southwest Teen Life Center, Youngstown Cultural Arts Center, Delridge Community Center and SWYFS to coordinate programs and hours so that there are options throughout the week and year.
- Pursue partnerships to add parks within SPR's identified "Gaps."
- Pursue development of the SW Dakota Street end to link to Longfellow Creek Legacy Trail and Dragonfly Park.
- Identify if each apartment complex has a play area and encourage development where there are none.



- Continue to work with SDOT's Safe Routes to Schools and Adaptive Streets programs to improve walkways and crosswalks.



- Expand active uses in Greg Davis and Cottage Grove/ Puget Blvd. Park. Coordinate with the Southwest Early Learning Bilingual Preschool and the Delridge P-Patch.
- Work with SPR staff and Citizens for Off Leash Areas (COLA) to consider locations in North Delridge for off-leash areas.
- When SPR upgrades or renovates the Delridge Playfield wading pool, integrate other nearby recreation elements to create a "whole family" inclusive play and gathering space.



## POLICIES



Participants at Gathering of Neighbors identify where they go to gather, recreate, and shop.

## STRATEGIES

- Add outdoor electrical service to support events on the lawns north of the Delridge Community Center.
- Work with former Longfellow Creek Stewardship Council, Nature Consortium, and Camp Long to revive stewardship of Longfellow Creek and celebrate the 25th Anniversary of the Action Plan.
  - Promote participation in Longfellow Creek work parties led by the Nature Consortium.
  - Seek funding to renovate signage, especially at crossings with streets and entry points.
  - Consider completing a connection along the 24th Avenue SW right-of-way, working with properties owners and the Vietnamese Cultural Center.
  - Work with the philanthropic partners such as the Home Depot Foundation to develop a partnership with the Longfellow Creek Legacy Trail to create a safe walkway through the Home Depot parking lot. Explore ways to integrate signage and awareness about environmental stewardship.
  - Create clear connections/signage to Denny Middle School and Chief Sealth High School, Southwest Teen Life Center and Pool, Delridge Community Center, and Camp Long.
- Build on and expand relationships with communities of color (e.g. Somali, Vietnamese, Hispanic/Latino, Cambodian) to lead design for renovating and heating the cabins to accommodate year-round use.
- Improve the entry to Camp Long from the intersection of 30th Avenue SW and SW Brandon Street. Consider additional improvements (such as upgrades to the cabins) to increase use during the upcoming planning for Camp Long.
- Maximize the impact of parks by offering orientations to different language and cultural communities, and by including orientations specifically for mothers
- Schedule orientations in different languages to the new Fitness Zone at Delridge Playfield.
- Offer periodic Community Center Orientations in native languages.
- Promote in Delridge the Big Day of Play which grew out of SPR's Healthy Parks and Healthy You initiative, and include activities oriented to different language and cultural communities.



## POLICIES

Support the Delridge Community Center, the Southwest Teen Life Center, and organizations like Youngstown Cultural Arts Center in providing a range of culturally supportive programming. (NEW)



Community members expressed strong interest in expanding the range of activities at Cottage Grove, Puget Boulevard and Greg Davis parks in order to encourage more use.

Increase use of Delridge's park and cultural facilities by engaging historically underrepresented communities, and using a multicultural design process in identifying parks and recreation needs and defining physical and programmatic improvements. (NEW)

## STRATEGIES

- Support designation of the Delridge Community Center as a Tier 1 center that is open seven days a week.
- Work with the Delridge Community Center Advisory Council to broaden their offering of culturally diverse programming. Pursue Get Moving Fund and Recreation for All grants. Examples and communities who raised the ideas include:
  - Female-centric activities (Somali)
  - Drop-in fitness classes
  - Partner with groups such as Asian Referral, Immigrant & Refugee Committee and West Seattle Senior Center to create affordable senior classes. (Vietnamese)
  - Culturally-relevant cooking classes (Vietnamese)
  - Art Classes (Somali)
  - Dance (Cambodian & Vietnamese)
  - Sustain a "Women of the World" program at Southwest Pool to increase access to swimming and water recreation among culturally diverse and low income children and families. (all)
  - Classes to teach youth their language and culture (Vietnamese & Somali)
  - Work with the Van Lang Vietnamese School to find a permanent space to organize language classes for learners and activities. This volunteer-based organization needs more funding to sustain its services to the community.
  - Affordable active classes like yoga, belly dancing and Zumba (all)
  - Interpreter, Adult English as a Second Language classes (Somali)
- Consider partnerships with organizations like Asian Counseling and Referral Center, Horn of Africa, the Vietnamese Cultural Center and El Centro de la Raza to help identify how community spaces can better accommodate cultural programming.

- Expand the Nature Consortium's partnership with Neighborhood House and Camp Long to produce "Overnight Family Campout" with families of color at High Point. This free event introduced immigrant and refugee families to Camp Long through a sleep-over in a cabin with music, campfire stories, sports, and art activities.
- Develop more partnerships to host events tailored for different groups like the Vietnamese Story Hour at the Delridge Library.



## POLICIES



Skateboard event as part of Delridge Day.

## Protect

## STRATEGIES

- Raise awareness about Parks' Healthy Parks, Healthy You program within underrepresented communities in Delridge.
- Partner with non-profits and school to increase affordable programming at the community center, and educational and recreational use of parks.
- Work with the Advisory Council to make participation easier, for example, having longer Community Center hours, offering punch cards, or providing easy to access low-income rates.
- Replicate efforts like the Neighborhood House's partnership with Parks for the "Be Active Together" that started a popular fitness program offered free to High Point's SHA residents.
- Support Youngstown Cultural Arts Center, Delridge Community Center, Southwest Youth and Family Services, Southwest Teen Life Center, and Delridge Library meet periodically to consult and coordinate.
- Sustain the partnership with Boren K-8 STEM to program the Delridge Wetlands and Stewardship Project. Work with schools to hold field trips consisting of walks and activities on Longfellow Creek Legacy Trail and Puget Creek Trail.
- Work with schools to ensure they are funded for yearly trips to Camp Long.

- Meet with SPD to periodically review criminal activity in the public realm to identify enforcement emphasis areas.
- Consider periodic, focused outreach to youth to identify areas of concern and opportunities to improve positive activity.
- Improve public safety in/near parks and discourage gang activity:
  - Improve visibility with lighting and selective pruning of plants.
  - Consider emphasis patrols.



## POLICIES



West Seattle Golf Course abuts SW Brandon Street, a key connection in the Brandon Junction. Removing the arborvitae trees and improving the fencing in coordination with sidewalk improvements would better integrate this park with the neighborhood.

## Fund

Seek grants and build partnerships to develop, manage, program, and as needed, acquire parks and cultural facilities. (NEW)



Children celebrated Tet Nhi Dong Children's Moonlight Festival as part of the DNDA Cultural Event Series. Photo by Nelson Lu

## STRATEGIES

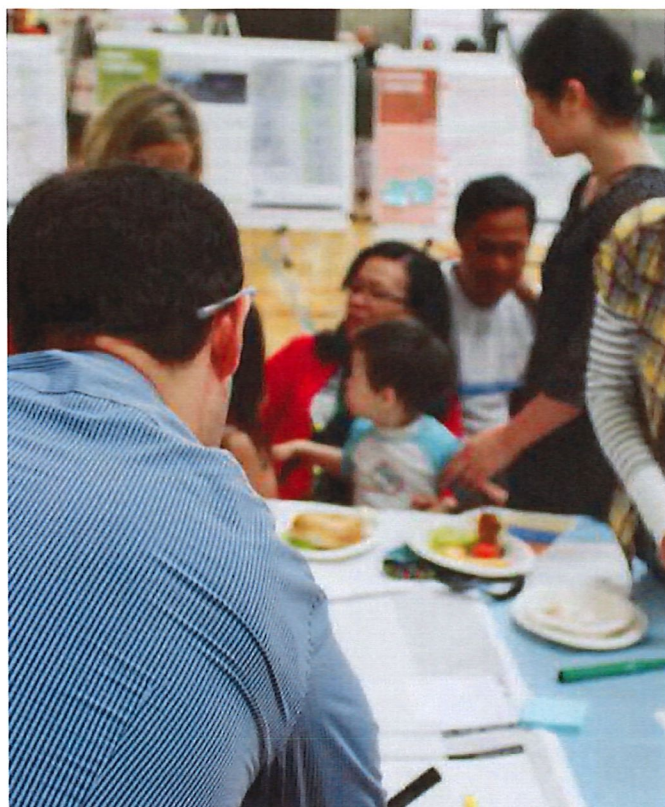
- Create clear, well-lit routes between bus stops and parks, cultural facilities and services (Delridge Community Center and Playfield, Camp Long, SW Teen Life Center and schools).
  - Improve visibility with lighting and selective pruning of plants.
  - Install multilingual signs that provide clear directions and raise awareness of facilities.
- Conduct inclusive outreach to raise participation in Block Watch, Neighborhood Play Streets and Neighborhood Night Out
- Seek to provide several attractions in each park, and identify programming and management actions that could increase positive use.
- Work with Community Liaisons, and other organizations to encourage communities of color to organize "Play Street Program" and "Night Out" events, and other SDOT programs, where they live.
- Consider a big Day of Play in the Delridge neighborhood to raise awareness about parks and cultural facilities and reinforce a culture of active transportation and recreation.



- Consider integrating into Delridge Day and Arts in Nature activities, an element (like a 6k race) that can be a substantial revenue source for the Community Center Advisory Council, and to fund scholarships and underwrite programs that benefit disadvantaged communities.
- Diversify and expand partnerships like the Camp Long and the Community Center advisory councils, and community organizations that are working with Duwamish Alive on the West Duwamish Greenbelt.
- Work with the Seattle Parks Foundation, Trust for Public Land and Forterra to raise awareness of community priorities, and to establish funding partnerships for community priorities.
- Continue DNDA's successful strategy of securing grant funding and establishing partnerships with Boren K-8 STEM to develop the Delridge Wetlands and Stewardship Project.



## POLICIES



### Design That Affirms

## STRATEGIES

- Pursue Get Moving grant for projects offering innovative and culturally relevant events and/or projects to increase participation in community sports, recreation and physical fitness activities that serve under-resourced communities.
- When developing programming ideas for parks and cultural facilities consider the process used for the Rainier Beach Community Center, where Parks solicited proposals from community partners to operate the community center. SPR then contracted with Bike Works; Southeast Seattle Community Youth Orchestra; Atlantic Street Center; and East African Community Services to expand services.
- Work with groups such as the West Seattle Senior Center, Asian Counseling and Referral Center, Horn of Africa, the Vietnamese Cultural Center, El Centro de la Raza to solicit proposals for programs that meet the needs of communities of color.

- Look for opportunities to replicate the Yesler Terrace park design process that used extensive engagement and interpretation to build a park that reflected the people of Yesler Terrace.
- Engage Community Liaisons during development of SPR plans and drafting design programs.
- Seek opportunities to budget public involvement as part of design consultant contracts for projects in Delridge to include engagement of Somali, Vietnamese, Latino, Cambodian and youth.
- Support Youngstown Cultural Arts Center's work to engage youth artists to bring local art throughout Delridge through projects like the Delridge Mural Project, a multi-year community art venture in conjunction with the Work Readiness Art Program.
- Coordinate and promote Delridge Day, Arts in Nature and the Delridge Cultural Community Series.
- Work with underrepresented communities to include their voices in the development, production and participation in these.



## POLICIES

Consider the health inequities reported in the Delridge Health Reporting Area when selecting physical improvements and programs, paying special attention that the improvements provide increased opportunity to those experiencing health inequities. (NEW)



Seek to create a comprehensive open space network in Delridge that integrates the residential and business environments with natural areas for public access and wildlife habitat. D-P1

## STRATEGIES



- Consider how the programming of parks facilities can support Delridge's diverse cultures and support the social cohesion of all communities in Delridge.
  - Continue to engage historically underrepresented communities to identify unmet needs, including needs for classes that respect/sustain their cultures.
  - Establish gathering place(s) for community/cultural events such as Cambodian Dances, Tet celebrations, etc.
  - Work with Delridge's communities to identify community partners and locations for offering for language and culture classes.
  - Coordinate programs among Community Center, Youngstown Cultural Arts Center and Southwest Youth & Family Services
  - Raise awareness among non-English speaking communities of Seattle Parks and Recreation's programs and facilities, and scholarships available through Recreation for All.
  - Seek to establish programs and facilities that reflect the high percentage of youth, as well as those that serve elders.

- Refer to the North Delridge Action Plan as a source for understanding Delridge's priorities for parks, community programs and trails, and addressing health inequities that are often concentrated in immigrant, low-income and communities of color.
- Encourage active and healthy living through Seattle Parks and Recreation programs.
- Pursue partnerships with Trust for Public Land and Seattle Parks Foundation who make health-promoting investments such as Fitness Zone.



- Support DNDA's work develop former Seattle City Light substation at SW Findlay Street and 23rd Avenue SW as the Wetlands and Stewardship Project.
- Better integrate Camp Long and West Seattle Golf Course into Delridge.
  - Expand and/or create new entries, integrate trails (such as recommended in the Golf Master Plan), improve views into the golf course, and support greater participation (e.g. programs in native languages.)
  - Develop partnerships to increase community ownership and maintenance of parks and trails.



## POLICIES

## STRATEGIES

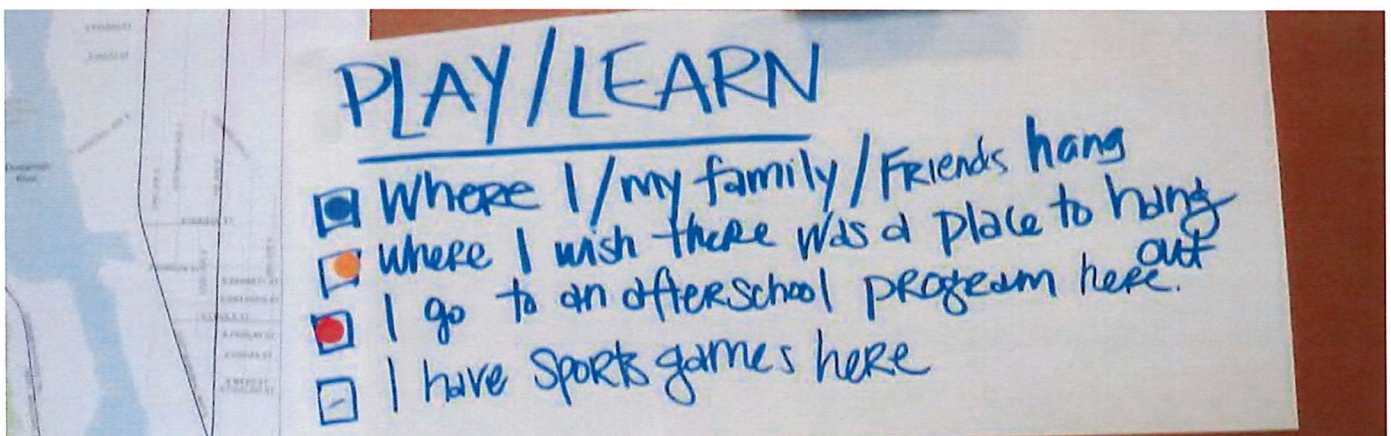
Strive to create a comprehensive system of trails for recreational hikers, walkers, and joggers, linking residential areas to parks and community facilities, schools, business nodes, and transit systems. D-P3

Youth at a FEEST dinner identified places where they gathered to play or learn.

- Increase park use by including features such as play equipment, electricity to support events, and field upgrades.
  - Explore more active programming at Greg Davis Park and Puget Boulevard Park such as an outdoor classroom, more play features, and picnicking facilities.
  - Develop partnership to add, program and maintain new parks such as at Dakota Place near Youngstown Flats and at the Seattle City Light surplus property.
  - Establish a process to work with Seattle Parks and Recreation to identify an appropriate location and develop an off-leash park in north Delridge.



- Integrate parks and trails to create “linear parks” such as improving Puget Boulevard to connect Longfellow Creek Legacy Trail, Brandon Junction, Puget Creek Trail and the Duwamish Longhouse and Herring House Park.
  - Identify and prioritize needed maintenance for community trails.
  - Work with community partners (e.g. Green Seattle Partnership, Duwamish Alive and the Nature Consortium) to update the Longfellow Creek Action Plan.
- Provide attractive, safe pedestrian and bike connections to parks.
- Work with SPR and the Green Seattle Partnership to engage the community in identifying habitat restoration priorities and the appropriate types and location of trails and other activities in Delridge’s undeveloped parks and greenspaces.





# APPENDICES

Appendices and additional information and background material used to develop the North Delridge Action Plan are located at: <http://www.seattle.gov/opcd/ongoing-initiatives/delridge-action-plan>

**A: Delridge Healthy Living Assessment**

**B: Seattle's Community Toolkit - A Handy Guide to City of Seattle Programs and Resources**



## **North Delridge Action Plan Priority Actions**

The North Delridge Action Plan calls for the following strategies to be implemented in the next 1-3 years.

### **A. Supporting Diverse and Engaged Communities**

Support a diverse and vibrant neighborhood where people of all ages, backgrounds and cultures can find meaningful support, opportunities to give back to their community, and safe gathering spaces to build community.

- Form a community organizational structure to steward the overall vision for Delridge in a manner that recognizes the existing organizational infrastructure and enfranchises historically underrepresented communities in Delridge.
- Broaden participation and sustain existing neighborhood events to create long-term identity of the neighborhood as "Delridge: where nature art and culture collide."
- Raise awareness of local workforce training programs and employment opportunities.
- Support members of the ACT and DNDA with establishing an economic development strategy for Delridge that includes an element of local job creation.

### **B. Dynamic Neighborhood Destinations**

- Create a partnership between community, businesses and agencies to support existing businesses and stimulate small businesses in North Delridge.
- Support development of a grocery store that provides affordable, healthy food serving North Delridge. This priority is shared with the actions identified under "Accessing Affordable Healthy Food." It is important to locate a grocery store at either Brandon or Sylvan Junction in order to be convenient and to strengthen these areas as shopping destinations.
- Improve Delridge Way SW with safe pedestrian crossings, art, and fixtures that establish a strong identity.

### **C. Access to Affordable, Healthy Food**

Promote a healthy Delridge by increasing access to affordable healthy food for families of all incomes.

- Support the development of a grocery store serving north Delridge.
- Work with Seattle's Human Services Division, West Seattle Food Bank, retailers and others to coordinate access to affordable healthy food.
- Support opportunities to learn about farming and cooking including the Little Red Hen project and the Delridge Wetlands and Stewardship project.

### **D. Active Transportation Choices**

Ensuring Delridge Way SW & adjacent streets support safe & predictable movement of people & goods.



- Work with SDOT to complete the RapidRide H Line Project.
- Complete and connect neighborhood greenways as shown in the Bicycle Master Plan.
- Pursue Neighborhood Street Fund Program grant to improve SW Brandon Street between 23rd Avenue SW and Camp Long.
- Work with the City and Sound Transit on light rail station siting and station area planning.

### **E. A Healthy Longfellow Creek Watershed**

Create green elements that welcome the rain: storing, draining, & cleaning it, sustaining the natural & built environments.

- Apply City regulations and coordinate infrastructure improvements to ensure that rainwater and surface water along hillsides and adjacent to Longfellow Creek are handled and conveyed to reduce impacts and protect the environment.
- Prioritize Natural Drainage System improvements to improve drainage and pedestrian connections to neighborhood destinations like schools, parks and transit.
- Celebrate its 25th Anniversary by renewing the Longfellow Creek Watershed Action Plan as a community and City partnership for improving the health of the watershed.

### **F. Supportive Parks & Cultural Facilities**

Preserve, create & activate parks and cultural facilities for the health of Delridge's community and environment.

- Establish Delridge as the place in Seattle where art, nature and culture collide, by coordinating and promoting Delridge Day, Arts in Nature and the Delridge Cultural Community Series.
- Foster partnerships between Seattle Parks and Recreation, and community organizations to expand awareness, and participation in parks and cultural facilities.
- Create a continuum of recreation and cultural opportunities for youth of all ages.
- Increase Delridge Community Center fundraising to broaden access to scholarships that help families access preschool and recreational programs.
- Improve walking access to Camp Long from SW Brandon Street, improve visual access to the West Seattle Golf Course, and construct the perimeter trail recommended in the Golf Course Master Plan.
- Support DNDA's work to build the wetland and agriculture education park on the Delridge substation site and specifically coordinate efforts with City departments to address the maintenance and performance of the surrounding bioswales and culverts. Partner with Boren K-8 STEM to program the education components.
- Assist Delridge's diverse communities with sustaining their organizations and developing cultural programs at the Community Center and Youngstown Cultural Arts Center.
- Improve trails and stairways to provide opportunities for physical activity, improve mobility, and enhance access throughout Delridge and to the West Duwamish natural areas.
- Work through capital projects and grants to increase safe routes to parks.
- Increase the diversity of play equipment and activities at Greg Davis and Cottage Grove Parks.



## **Delridge Neighborhood Plan Amendments**

The North Delridge Action Plan overwhelmingly confirms the existing Neighborhood Plan Goals and Policies and proposed addition that reflect new priorities of Delridge’s community.

### **Delridge Neighborhood Plan Proposed Goals and Policies**

#### **PARKS & OPEN SPACE GOAL**

- D-G1** A Delridge community that is integrated with the natural environment, where open space and natural areas are preserved, interconnected, well maintained, and safe for wildlife and residents including children.
- D-G2** Parks and recreation resources that meet the needs of all Delridge communities and provide opportunities to address health inequities.

#### **PARKS & OPEN SPACE POLICIES**

- D-P1** Seek to create a comprehensive open space network in Delridge that integrates the residential and business environments with natural areas for public access and wildlife habitat.
- D-P2** Seek to protect from development: natural open space areas, wetlands, drainage corridors, and woodlands that contain prime wildlife habitat along the Longfellow Creek, Puget Creek, and Duwamish River drainage corridors and valley hillsides.
- D-P3** Strive to create a comprehensive system of trails for recreational hikers, walkers, and joggers, linking residential areas to parks and community facilities, schools, business nodes, and transit systems.
- D-P4** Work with community groups and neighborhood stakeholders to provide stewardship of the natural environment using appropriate city resources in partnership with community organizations, schools, and others.
- D-P5** Support year-round programming to help sustain Delridge’s identity as a neighborhood where art, nature and culture are shared and sustained.
- D-P6** Use existing public spaces to provide recreational opportunities (especially play areas) for a range of children and youth.
- D-P7** Improve walking routes to playgrounds especially where playgrounds are located on school grounds where improvements can enhance safe school access.



- D-P8**      Work with communities to add programming or improvements that are appropriate for the character of each park to increase overall use and opportunities for physical activity.
- D-P9**      Support the Delridge Community Center, the Southwest Teen Life Center, and organizations like Youngstown Cultural Arts Center in providing a range of culturally supportive programming.
- D-P10**     Increase use of Delridge’s park and cultural facilities by engaging historically underrepresented communities, and using a multicultural design process in identifying parks and recreation needs and defining physical and programmatic improvements.
- D-P11**     Seek grants and build partnerships to develop, manage, program, and as needed, acquire parks and cultural facilities.
- D-P12**     Consider the health inequities reported in the Delridge Health Reporting Area when selecting physical improvements and programs, paying special attention that the improvements provide increased opportunity to those experiencing health inequities.
- D-P13**     Seek to reduce pollution into Longfellow Creek by installing Natural Drainage Systems in the public right-of-way, where feasible, as part of the Integrated Plan.

#### **LAND USE GOALS**

- D-G((2))3**      A series of mixed-use activity nodes or centers along Delridge Way clustering commercial, business, entertainment, community uses, and public facilities.
- D-G((3))4**      The mixed-use neighborhood anchors provide services to residents in compact areas accessible from walkways, park trails, bikeways, transit routes, and local residential streets.

#### **LAND USE POLICIES**

- D-P((5))14**     Seek to create special identities for unique districts or places, particularly the neighborhood anchors along Delridge Way, using distinctive and unique gateways, pedestrian amenities, streetscape, and other furnishings and designs.
- D-P((6))15**     Strengthen the local Delridge business community by participating in public/private ventures to provide public benefits as appropriate to meet Delridge’s long-range goals.



- D-P((7))16** Seek to develop a pedestrian-oriented environment along Delridge Way that integrates adjacent storefront activities with transit, parking, bikeways, and walking areas. Seek to calm traffic on Delridge Way through the neighborhood anchors.
- D-P((8))17** Seek to enhance pedestrian improvements and commercial services in the neighborhood anchor at Delridge and Andover. This anchor should serve as a major local employment center, while facilitating the flow of traffic through the node and onto the West Seattle bridge.
- D-P((9))18** Seek to improve the “community campus” neighborhood anchor at Delridge and Genesee. This anchor should provide educational, recreational, cultural, and social opportunities (and potentially increased housing) to the neighborhood, by ~~((preserving and redeveloping the Old Cooper School and by coordinating, expanding, and improving programs between the local agencies))~~ sustaining, coordinating, and improving programs offered by Youngstown Cultural Arts Center and its tenant organizations, Southwest Youth and Family Services, and the Delridge Community Center.
- D-P((10))19** Seek to improve the neighborhood anchor at Delridge and Brandon, through means including the continuation of the neighborhood commercial zone in the vicinity, along Delridge Way south to SW Juneau Street. This anchor should provide neighborhood-oriented retail and personal services and neighborhood-based city services (such as a neighborhood service center and library) for the nearby neighborhoods and existing neighborhood businesses.
- ~~**((D-P11** To support the vision of the neighborhood anchor designated at Delridge and Brandon, LDT zoning is appropriate, along both sides of SW Brandon Street between 23rd Avenue SW and 26th Avenue SW; and along both sides of SW Findlay Street between 23rd Avenue SW and 26th Avenue SW.))~~
- D-P((12))20** Seek to improve the neighborhood anchor at Delridge and Sylvan/Orchard Ways, which will provide goods, services, entertainment, and transit services to the West Seattle area.
- D-P21** Seek to increase construction, by new development, of right-of-way improvements that collect and convey stormwater, and improve pedestrian mobility.
- D-P22** Undertake Sound Transit 3 station and station area planning and design to support community-oriented commercial development, additional residential development, and improved access by biking, walking, and taking transit. A station access plan should also enable car drop-off at the station given the challenges to accessing the station by foot.



## TRANSPORTATION GOALS

- D-G((4))5** A transportation system that provides convenient access for local travel within the neighborhood, and access to principal employment, shopping, and entertainment activities in the surrounding area.
- D-G((5))6** A community that provides safe, convenient, and efficient bikeway access to local and regional destinations.

## TRANSPORTATION POLICIES

- D-P((13))23** Encourage high-quality bus service with effective and efficient transfer opportunities, and facilities that provide adequate safety and security.
- D-P((14))24** Seek to use park-and-ride lots for multiple purposes such as serving as off-peak period recreational trailheads.
- D-P((15))25** Strive for high-quality roadway maintenance to ensure safe and efficient travel for pedestrians and vehicles.
- D-P26** Seek to design Delridge Way SW as a multimodal corridor that supports Delridge’s vision for community development, with improved transit and non-motorized transportation choices.
- D-P27** Maintain and improve unopened rights-of-way to provide walking and biking connections where roads are not feasible.
- D-P28** Increase the number of streets with sidewalks, implementing the Pedestrian Master Plan and community priorities for new sidewalks.
- D-P29** Implement a complete network of all ages and abilities bicycle facilities that provide connections to local and regional destinations.
- D-P30** Maintain and expand trails in Delridge to provide additional connections to parks and other destinations throughout the neighborhood.
- D-P31** Partner with organizations such as Feet First, school-based programs, and the community center to offer culturally responsive programs that promote bicycling and walking.



## HOUSING GOALS

- D-G(~~(6)~~)7** A community with a range of household types, family sizes, and incomes—including seniors and families with children.
- D-G(~~(7)~~)8** A community that preserves and enhances the residential character of single-family neighborhoods within the Delridge community while providing a range of housing types to fit the diversity of Delridge households.

## HOUSING POLICIES

- D-P(~~(16)~~)32** Seek to use regulatory tools or other means to preserve open space and natural features while increasing the variety of housing types available to the community.
- D-P(~~(17)~~)33** Encourage the rehabilitation of substandard housing.

## COMMUNITY & CULTURE GOALS

- D-G(~~(8)~~)9** A diverse community of neighborhoods with people from many cultures, longtime residents, and newcomers, young and old, people who own and rent homes and who work in a variety of jobs. A community where all people feel safe and welcome, have the opportunity to participate in their community and express what is most important to them, and which meets its residents' social, economic, and recreational needs.

## COMMUNITY & CULTURE POLICIES

- D-P(~~(18)~~)34** Seek to provide opportunities for multicultural sharing, education, understanding, and celebration through ((~~community participation~~)) inclusive engagement and appreciation efforts, and through the provision of public meeting facilities.
- D-P(~~(19)~~)35** Seek to inventory and promote neighborhood-based emergency preparation plans.
- D-P(~~(20)~~)36** Strive to build strong partnerships with local crime prevention efforts.
- D-P(~~(21)~~)37** Seek to involve the whole community to make services available to the broadest cross section of the community by developing programs that address the needs of individuals and families.



**D-P((22))38** Seek to develop cultural programs (such as art, music, and theater), and support community programs. Seek to provide public facilities that support the cultural programs.

**D-P39** Strengthen partnerships and work with communities of color, immigrants, refugees, native peoples, people with low incomes, youth and limited English proficiency individuals in Delridge when developing and implementing plans that affect the distribution of resources, and programs that serve the community.

**D-P40** Seek to build community leadership and the capacity of Delridge-serving organizations.

**D-P41** Use a race and social justice analysis, such as the Race and Social Justice Toolkit, to establish racial equity outcomes when scoping capital projects and significant programs.

#### **PLAN STEWARDSHIP GOAL**

**D-G ((9))10** A community fully involved in efforts to implement the neighborhood plan, and to maximize the efficient use of available resources.

#### **PLAN STEWARDSHIP POLICIES**

**D-P ((23))42** Promote partnerships with projects that can leverage City efforts toward the implementation of the Delridge neighborhood plan.

**D-P((24))43** Support community-based efforts to implement and steward the plan.

#### **ECONOMIC DEVELOPMENT GOAL**

**D-G11** A community that offers pathways to jobs and wealth creation.

#### **ECONOMIC DEVELOPMENT POLICIES**

**D-P((25))44** Seek to create greater employment and shopping opportunities within the Delridge neighborhood.

**D-P((26))45** Seek to participate with other public agencies and private interests in marketing projects, labor force training programs, and other efforts that support community residents in need of employment.

**D-P((27))46** Encourage local business development opportunities, particularly for small businesses that may be owned by or employ Delridge residents.



**ACCESS TO AFFORDABLE, HEALTHY FOOD GOALS**

**D-G12**      A community where residents have the economic ability, mobility, and choices to access healthy, affordable, and culturally appropriate food.

**ACCESS TO AFFORDABLE, HEALTHY FOOD POLICIES**

**D-P47**      Strive to increase opportunities to access affordable healthy food along Delridge Way SW near Brandon Junction or Sylvan Junction.

**D-P48**      Promote and support access to urban farming and education about growing food in ways that are accessible by Delridge’s diverse cultures.