

Duwamish Waterway Park Acquisition

Civic Development, Public Assets and Native Communities Committee

July 31, 2019

Seattle Parks and Recreation



City of Seattle

Background

- Location: 7900 10th Ave. S in South Park
- The City has operated the park for more than 40 years
- 1.26 acres of existing 1.38-acre park is King County-owned land maintained by City via special use permit
- The City has worked with the South Park community, King County, and Seattle Parks Foundation on a vision for future development of the park: acquisition of this parcel, permitting, then construction
- Ordinance authorizes acquisition



Duwamish Waterway Park Acquisition

Size: 54,947 square feet (1.26 acres)

Purchase Price: \$1 million (Park District)

Plans: King County reduced the purchase price by \$100,000 to cover the cost of site remediation

Benefit: Consolidation of City ownership will ensure this park will serve the South Park community for years to come

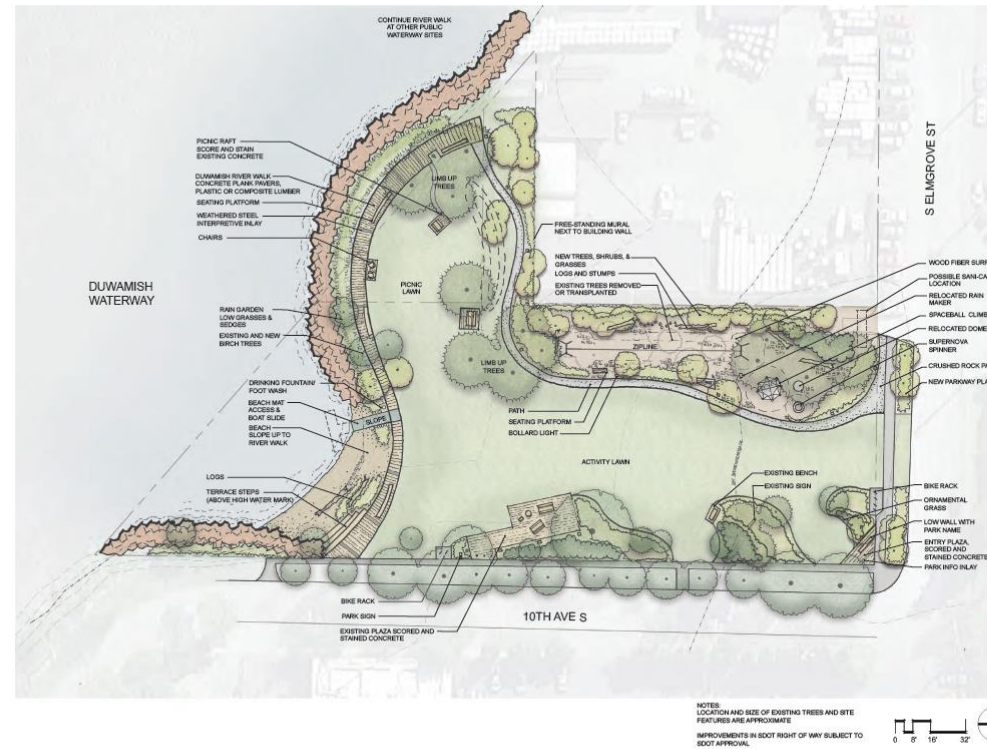


Future Improvements

Concept Plan

Possible elements

- Landscaping
- New vegetation
- Play elements
- Pathways



CONCEPT STATEMENT

RECALLING THE BRAIDED CHANNEL OF THE HISTORIC DUWAMISH RIVER, THE DESIGN ESTABLISHES A FLOWING MOTION FROM THE COMMUNITY TOWARD THE WATERWAY. AT THE WATERWAY'S EDGE, A RIVER WALK MADE OF PAVERS, PLASTIC LUMBER, OR METAL CREATES A PRIMARY CIRCULATION ROUTE AND A PLACE TO SIT AND GATHER. TEXT INLAYS WITHIN THE RIVER WALK TELL THE HISTORY OF THE DUWAMISH WATERWAY, AND ADDITIONAL LOCATIONS ALONG THE RIVER MAY CONTINUE THE STORY. SCULPTURAL PLAY ACTIVITIES RECALLING THE CRANES, TRESTLES AND GEARS FAMILIAR TO SOUTH PARK ARE NESTLED INTO NEW PLANT BEDS. A NEW RAIN GARDEN ALONG THE NORTH EDGE OF THE PARK CAPTURES RAIN WATER WHILE STABILIZING THE SOIL ALONG THE EXISTING RIP RAP EDGE.



Duwamish Waterway Park
South Park, Seattle



Questions?

