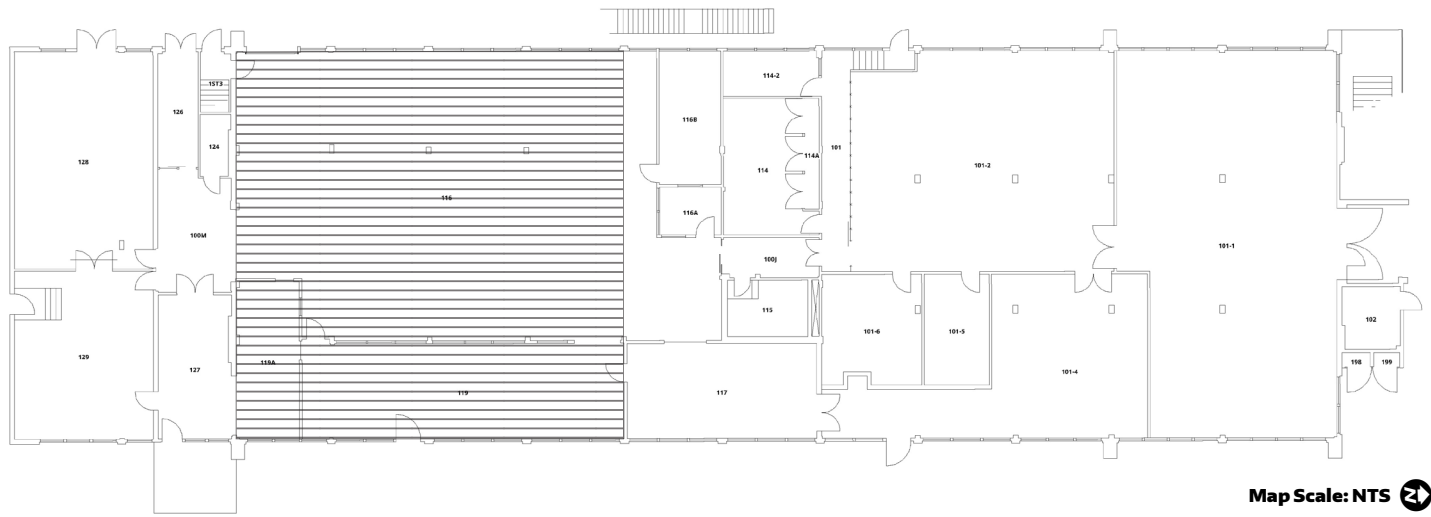


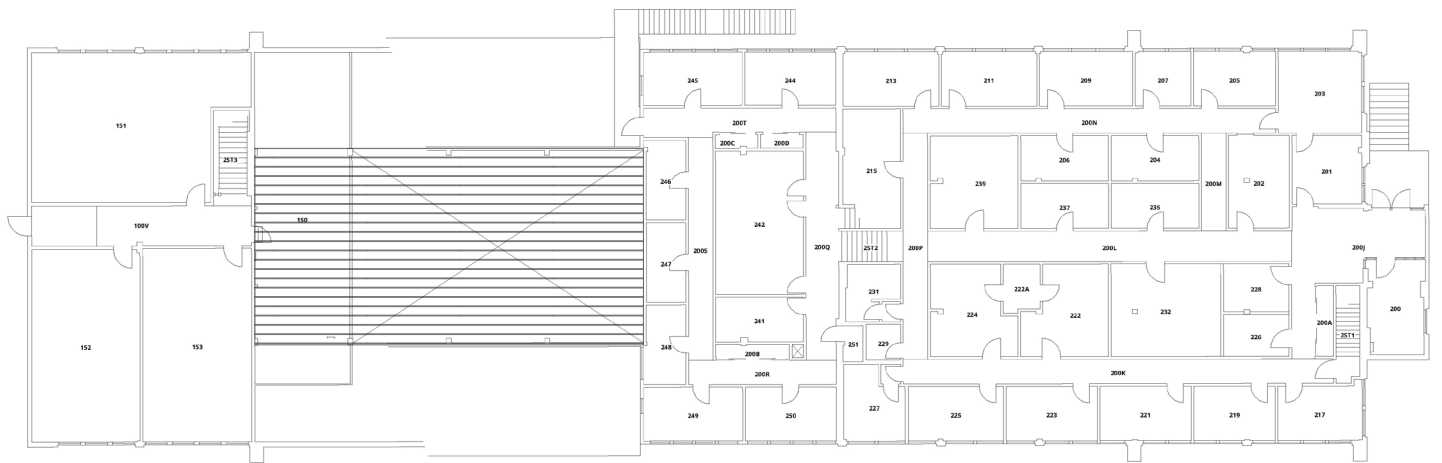
University of Washington Engineering Annex / Alaska-Yukon-Pacific Exposition Foundry
3902 East Stevens Way NE

Attachment A




Map Scale: NTS 

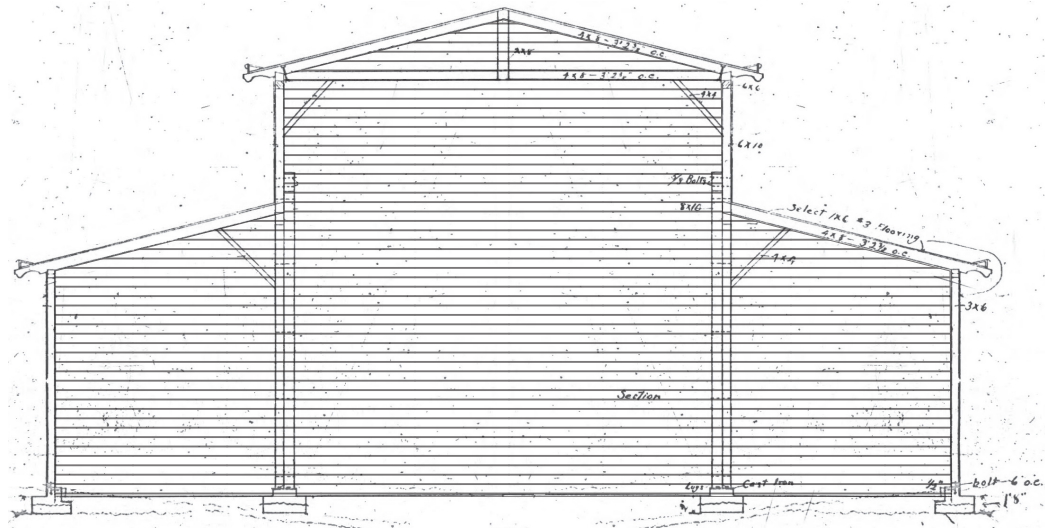
First Floor. Base map Floor ID 1182_01 printed on 8/14/2018, source University of Washington Facility Library.



Second Floor. Base map Floor ID 1182_02 printed on 12/14/2017, source University of Washington Facility Library.

Map Scale: NTS 

 Indicates the portion of the building interior including the high-bay shop space volume and heavy timber framing.



Transverse Section. Base 1909 section prepared by W. N. G. Place, building architect. Original drawing had north and south half sections, NWV deleted the north half and duplicated and flipped horizontally the south half to provide a single section for the high-bay shop space volume. Source University of Washington Facility Library.