



A Community-Led Alternative to Sweeps, Jails, and Abandonment

# JustCARE's Strategy

Prioritizing meaningful community improvement

- Honoring both public safety and client needs
- Maintaining intensive communication with community stakeholders

# JustCARE's Strategy

Addressing the complex causes of homelessness and subsequent public safety issues

- Trauma informed
- Long-term solutions
- Housing first



# JustCARE's Strategy

## Inter-agency collaboration

- Initial Outreach: REACH, CoLEAD
- Placement Agencies: Asian Counseling and Referral Services, Chief Seattle Club, CoLEAD
- Wheeler Davis safety team
- Long-Term Case Management: LEAD

# Who is JustCARE?



# Who is JustCARE?





# Who is JustCARE?



# Who is JustCARE?





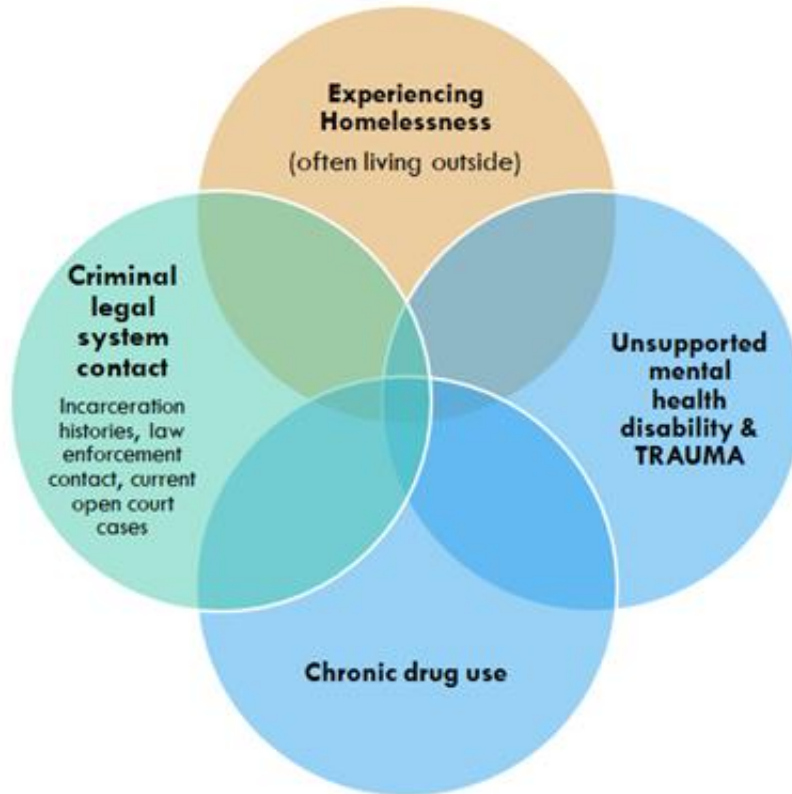
# Who is JustCARE?

“The partnership with PDA has given us the ability to bring back staff members who were unemployed due to the pandemic including positions in housekeeping, maintenance and front desk. The support and partnership with PDA and ACRS has allowed our team to grow and gain valuable interpersonal life skills that will better serve a future community.”

-Anne Johnson

General Manager | Kimpton Palladian Hotel

# Target Population



# JustCARE Outcomes

- The myth of “service-resistant clients”
- Counteracting systemic racism
- Solving chronic homelessness
- Setting up permanent stability

# JustCARE Outcomes



# JustCARE Outcomes

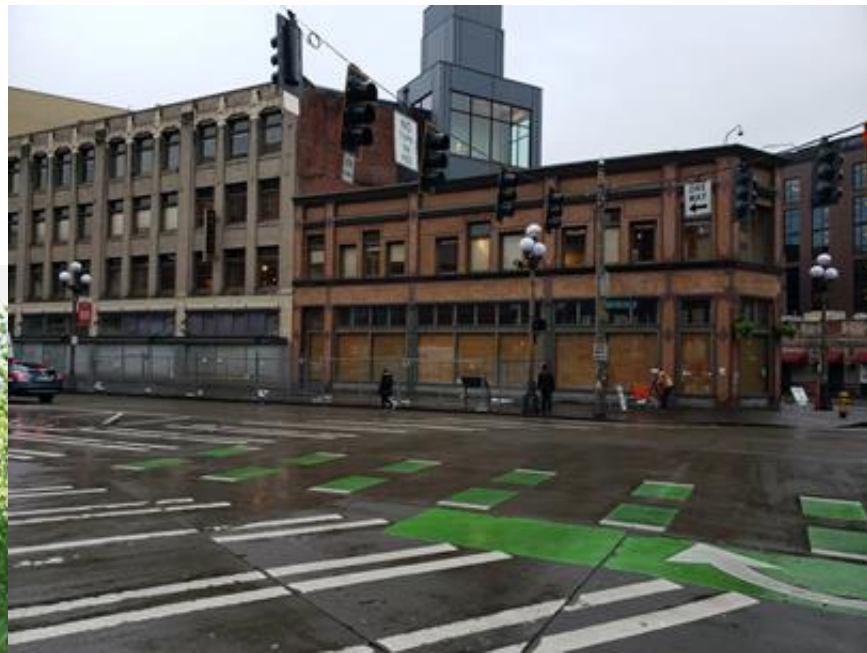




# JustCARE Outcomes



# JustCARE Outcomes



# JustCARE Outcomes



