

# Woodland Park Property Exchange

Seattle Parks and Recreation  
Seattle Department of Transportation

City Council Public Assets and Native Communities Committee

June 4, 2021

Seattle Parks and Recreation



City of Seattle

# Woodland Park Property Exchange: Overview

- Legislation authorizes property exchange between Seattle Parks and Recreation (SPR) and Seattle Dept. of Transportation (SDOT) within Woodland Park.
- SDOT has made street improvements along E Green Lake Way N including bike lane partly on SPR property.
- In exchange, SPR would receive a larger property along Whitman Ave. N on west side of park adjacent to SR99.
- Exchange complies with Initiative 42, which helps preserve City parkland.



# Multi-Modal Project & Property Exchange

- SDOT's Green Lake and Wallingford Paving & Multi-Modal Improvements Project
- Street widening and new bike lanes required 3' from SPR grass strip – NE 50<sup>th</sup> to 57<sup>th</sup> streets
- Exchange includes property trade & SDOT planting of 50 new trees along parking strip



## Narrow park median by 3'

From 12' to 9' wide

## Upgrade all bike lanes to 1-way PBLs.

Per the Bike Master Plan

## Add a new signal at Golf.

Transition from 1-way to 2-way PBLs  
End at N 46th St Greenway

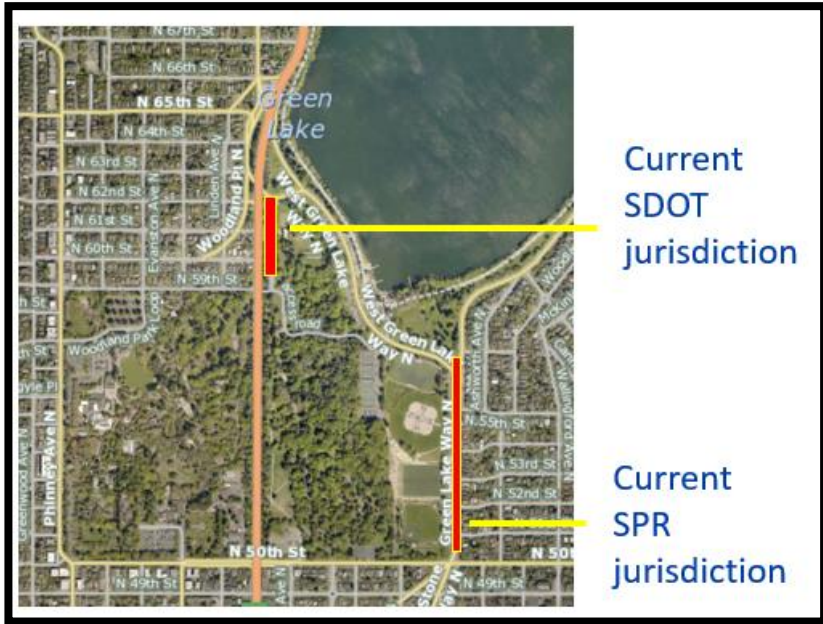
## Pros

- Streamline PBLs and transition.  
No additional signal needed at 52nd (cost savings)
- Retain 48 parking spaces.  
North of 50th: 24 parking spaces (lose 11)  
South of 50th: 23 parking spaces (lose 18)
- Enhance green space in park median and at major intersections (at 50th and at Golf).
- Maintain turn lanes.



# Woodland Park Exchange

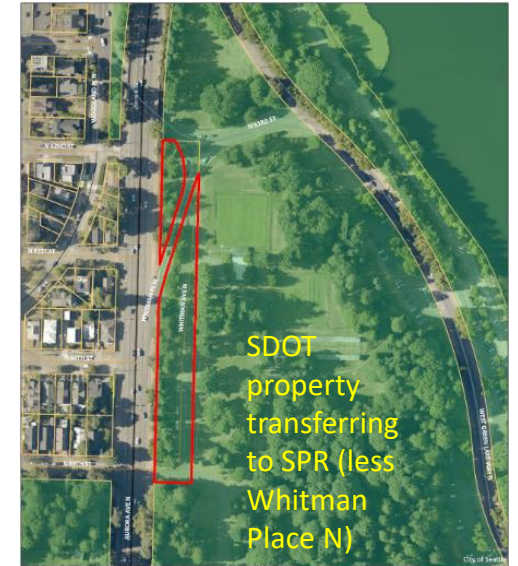
## Current jurisdiction



## SPR strip along E Green Lake Way to SDOT



## SDOT Whitman Ave N prop. to SPR



# Questions?

