



# SEATTLE CITY COUNCIL

## Transportation Committee

### Agenda

**Tuesday, February 18, 2025**

**9:30 AM**

**Council Chamber, City Hall  
600 Fourth Avenue  
Seattle, WA 98104**

**Rob Saka, Chair  
Joy Hollingsworth, Vice-Chair  
Robert Kettle, Member  
Alexis Mercedes Rinck, Member  
Dan Strauss, Member**

**Chair Info: 206-684-8801; [Rob.Saka@seattle.gov](mailto:Rob.Saka@seattle.gov)**

**[Watch Council Meetings Live](#) [View Past Council Meetings](#)**

**Council Chamber Listen Line: 206-684-8566**

The City of Seattle encourages everyone to participate in its programs and activities. For disability accommodations, materials in alternate formats, accessibility information, or language interpretation or translation needs, please contact the Office of the City Clerk at 206-684-8888 (TTY Relay 7-1-1), [CityClerk@Seattle.gov](mailto:CityClerk@Seattle.gov), or visit <https://seattle.gov/cityclerk/accommodations> at your earliest opportunity. Providing at least 72-hour notice will help ensure availability; sign language interpreting requests may take longer.



# SEATTLE CITY COUNCIL

## Transportation Committee

### Agenda

### February 18, 2025 - 9:30 AM

**Meeting Location:**

Council Chamber, City Hall, 600 Fourth Avenue, Seattle, WA 98104

**Committee Website:**

<https://www.seattle.gov/council/committees/transportation-x154110>

---

This meeting also constitutes a meeting of the City Council, provided that the meeting shall be conducted as a committee meeting under the Council Rules and Procedures, and Council action shall be limited to committee business.

Members of the public may register for remote or in-person Public Comment to address the Council. Details on how to provide Public Comment are listed below:

Remote Public Comment - Register online to speak during the Public Comment period at the meeting at

<https://www.seattle.gov/council/committees/public-comment>

Online registration to speak will begin one hour before the meeting start time, and registration will end at the conclusion of the Public Comment period during the meeting. Speakers must be registered in order to be recognized by the Chair.

In-Person Public Comment - Register to speak on the Public Comment sign-up sheet located inside Council Chambers at least 15 minutes prior to the meeting start time. Registration will end at the conclusion of the Public Comment period during the meeting. Speakers must be registered in order to be recognized by the Chair.

Pursuant to Council Rule VI.C.10, members of the public providing public comment in Chambers will be broadcast via Seattle Channel.

Please submit written comments to all Councilmembers four hours prior to the meeting at [Council@seattle.gov](mailto:Council@seattle.gov) or at Seattle City Hall, Attn: Council Public Comment, 600 4th Ave., Floor 2, Seattle, WA 98104.

*Please Note: Times listed are estimated*

**A. Call To Order**

**B. Approval of the Agenda**

**C. Public Comment**

**D. Items of Business**

**1. Regional Transit Security Roundtable**

Supporting  
Documents:

[Central Staff Presentation](#)

[King County Metro Presentation](#)

[City of Seattle Presentation](#)

**Briefing and Discussion**

**Presenters:** Michelle Allison, General Manager, and Neil Crosier, King County Metro Transit; Todd Morrell, Police Chief, Metro Transit Police Department; Moises Gutierrez, Deputy CEO/Chief Agency Oversight Officer, Sound Transit; Natalie Walton-Anderson, Chief Public Safety Officer, Seattle Mayor's Office; Adiam Emery, Interim Director, Seattle Department of Transportation (SDOT); Greg Woodfill, Amalgamated Transit Union (ATU) Local 587; Jon Scholes, Downtown Seattle Association (DSA); Calvin Chow, Council Central Staff

**2. Proposed SDOT 2025 Levy Delivery Plan**

Supporting  
Documents:

[2025 SDOT Transportation Levy Delivery Plan](#)

[SDOT Presentation](#)

**Briefing and Discussion**

**Presenters:** Adiam Emery, Interim Director, Francisca Stefan, and Meghan Shepard, Seattle Department of Transportation (SDOT)

**E. Adjournment**



## Legislation Text

---

**File #:** Inf 2628, **Version:** 1

---

Regional Transit Security Roundtable

# Recent Seattle Legislative Actions

---

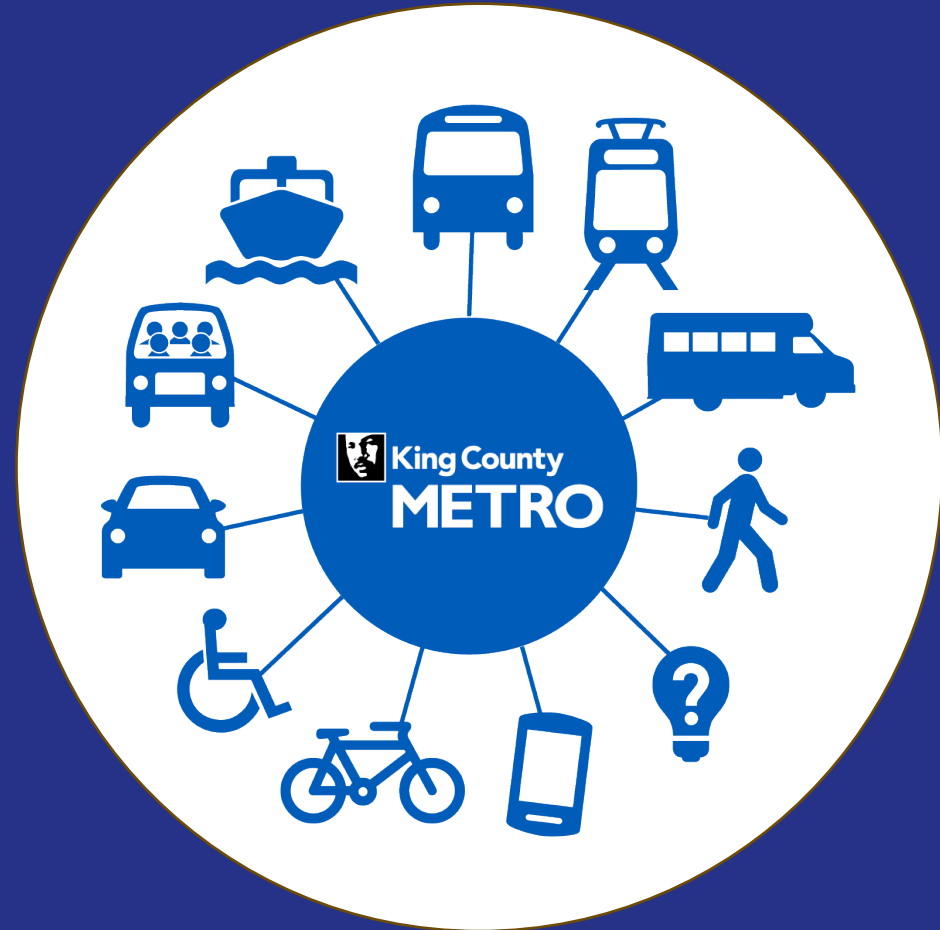
Voter-approved **Transportation Levy** included \$9 million (over 8 years) to invest in strategies that increase transit rider safety and security, including transit and public safety personnel services

Seattle's **2025 Adopted Budget** included \$1 million to support King County Metro's Transit Center Ambassador Program and King County's Behavioral Health Team deployed on transit

**Council Statement of Legislative Intent** (SDOT-107-A) requests that SDOT produce a report on implementing transit security improvements and services by June 2, 2025

# Metro Transit Safety

Seattle City Council  
Transportation Committee  
February 18, 2025





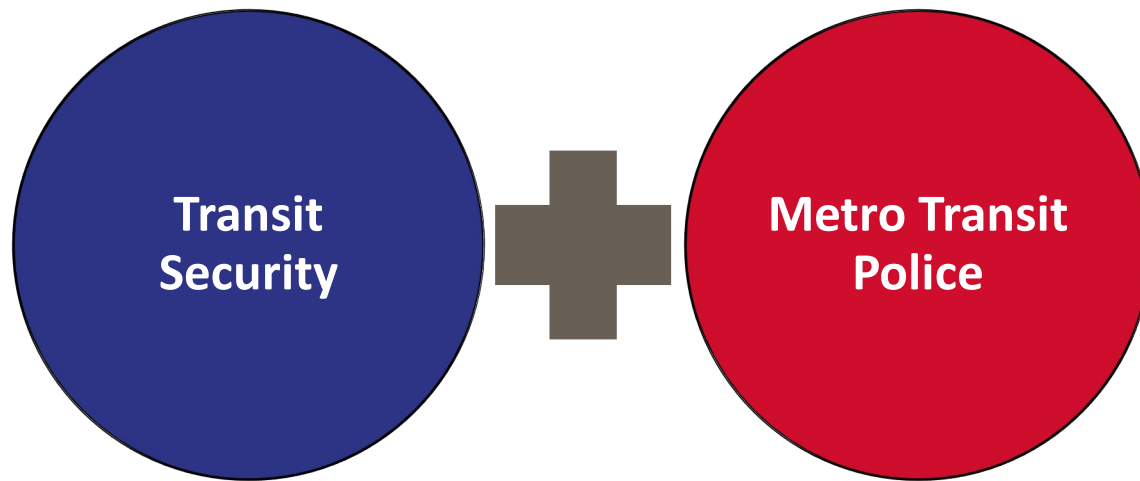
**Shawn Yim**

1965–2024

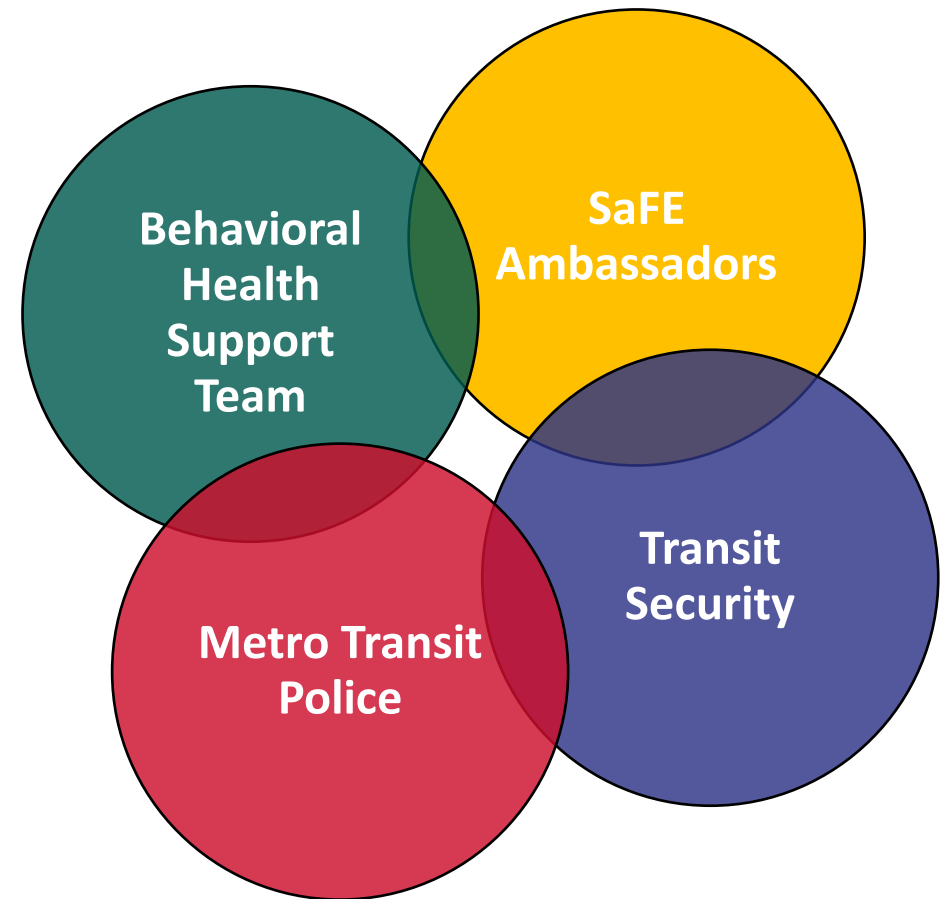
#21882



## Public Safety Model



## Care and Presence Model



# Overall Safety Trends



# Resetting Rider Expectations

- **Updated Code of Conduct** on all buses, refreshed with visuals and clear language to prioritize what matters most to operators and riders.
- **Metro's fare education campaign** reminds riders that fares help keep transit moving and that we offer free or reduced fares for those who qualify based on ability, age, or income.
- **Fare Inspection and Enforcement** returns to uphold transit's fare collection in a safe, equitable way.

### Please follow Metro's Code of Conduct





Pay the right fare.



Be respectful.



Wear headphones.



Do not harass the driver or riders.



Do not smoke, vape, use drugs, eat, or drink alcohol.



Do not lie down.



Thank you for riding and reporting:



TELL your driver



GO TO [kingcounty.gov/metro/ride](https://kingcounty.gov/metro/ride) or call 206-553-3000



CALL or TEXT 911 if there is an emergency

### King County Metro will ask you for proof of fare payment starting March 31, 2025



Fares help pay for transit  
Every time you remember to pay, you improve Metro service for everyone!  
Visit [kingcounty.gov/metro/FareEducation](https://kingcounty.gov/metro/FareEducation)



Find the fare that's right for you  
You may qualify for a reduced fare based on ability, age or income.  
Visit [ReducedFare.kingcounty.gov](https://ReducedFare.kingcounty.gov)



REMEMBER TO PAY

Don't have proof of payment?



First and second times:  
Warning



Subsequent times:  
Fines or alternative resolutions



# What Metro is doing to improve safety for operators

- **Hiring additional** Metro Transit Police and Transit Security Officers.
- **Installing operator safety partitions** that provide additional protection for bus operators.
- Better equipping operators with the tools to handle difficult situations through **training**.

Hiring Metro Transit Police and security personnel



Operator Safety Partitions



Training





## Operation Safe Transit



# What's next to improve safety at Metro



**\*New and Continued partnerships** with partners from around the region



**\*Scaled alternate responses** to match the needed support with the right response



**\*Investments in the Built Environment** continued cleaning, lighting, and maintenance investments around stops and stations for enhanced rider safety



**Community support** in resetting behavior on our transit system



**Participate** in the Regional Round Table on Transit Safety

*\*Current and future City of Seattle investments*

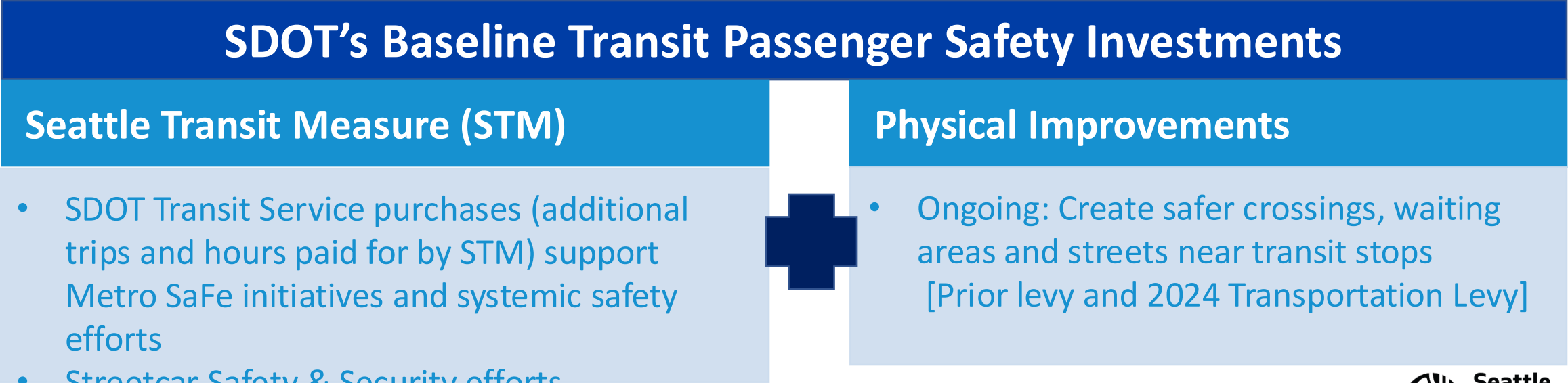
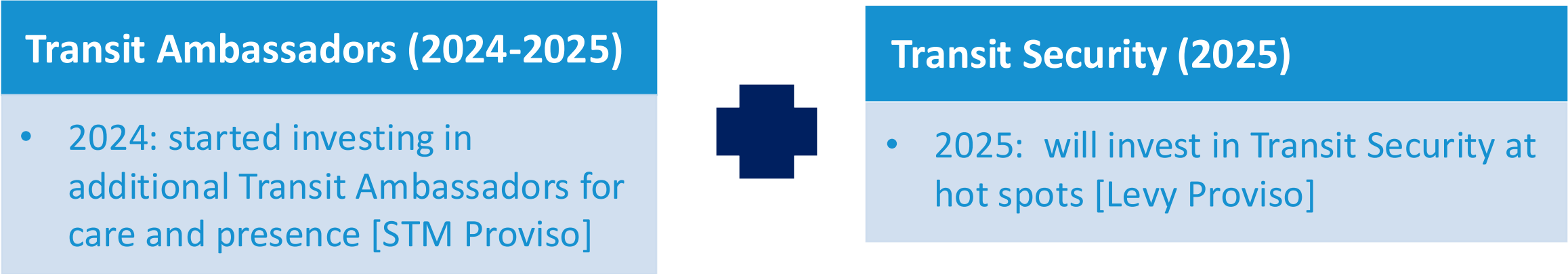




# Transit Passenger Safety Seattle Department of Transportation

# SDOT Support for Transit Passenger Safety

*Increasing Investments*





# Seattle Transit Measure-Funded Transit Safety

SDOT *purchases transit service* from Metro; funds Metro transit safety & security program costs for added service

- 2023: STM contributed \$1.3 million
- 2025: SDOT's contribution is estimated ~ \$3.5 million

SDOT *invests in Transit Ambassadors*, a complement to Metro Transit Security Officers (TSOs)

- Provide customer service on buses or near stops, wayfinding, fare questions, and general information
- In 2024, added transit ambassadors at:
  - Central District: 5th & Jackson to 23rd & Cherry
  - Rainier Ave Corridor: Mt Baker Transit Center to Columbia City
  - Seattle Center: 3rd & Bell to 5th Ave N & Mercer
- This year, working with Metro to execute agreement to solidify up to 3 new locations based on need and impact



# Transit Passenger Safety (Transportation Levy-Funded)

- Transportation Levy includes \$9M towards Transit Passenger Safety
- Executing agreement with Metro now to invest \$1M this year per Council Proviso
- Investments will support transit security personnel at hot spots and known problem areas
- Includes data-driven efforts to expand the hours of Transit Security Officers (TSOs), locations in Seattle



Metro Transit Security officers (King County Metro website)



# Streetcar Safety and Security

SDOT Funded investments include:

- TSO patrols for streetcars up to 8 hours per day to enforce the Code of Conduct and deter unsafe behaviors
- Streetcar Supervisors provide additional level of staffing on vehicles
- Adding lighting at 8 shelter locations this year
- On board video cameras record incidents for safety investigations



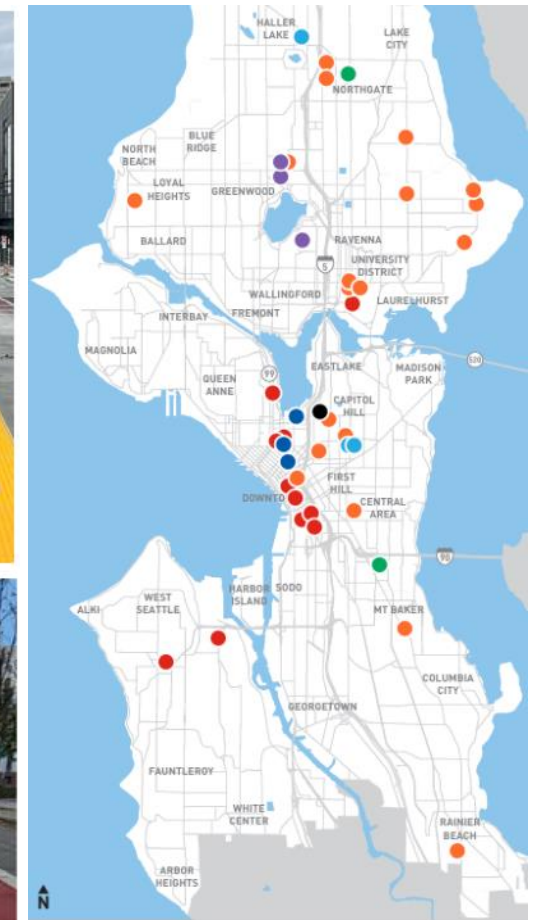
# Physical Improvements

Passenger Safety Investments focus on:

- Making passengers and stops more visible
- Fostering a sense of safety for waiting passengers
- Creating safer crossings and streets near transit stops
- 2024 Transportation Levy will invest \$27M in Transit Spot Improvements
- Project types include:
  - Pedestrian lighting
  - Bus zone expansion and bus benches
  - Crosswalks, crossing signals, and accessible curb ramps



## 2024 Transit Spot Improvements



- Red Bus Lanes
- Bus Zone Improvements (rear door, bus benches, and bus shelter pads)
- Asphalt and Concrete Overlays
- Signal Upgrades
- Curb Space and Lane Markings
- Streetcar Safety Improvements
- Safety and Maintenance

# Other City Safety Initiatives

## Downtown Activation Team Pilot

*To restore and sustain a vibrant Seattle, we will address the challenge of clean, safe, and revitalized neighborhood and downtown with a compassionate, coordinated, and place-based approach.*

PUBLIC SAFETY RESPONSE	VIBRANT NEIGHBORHOODS	ECONOMIC RECOVERY	COMMUNITY WELL-BEING
Reduced violent crime, high-impact crime, crisis, and street disorder	Healthy, vibrant, inclusive and activated public spaces	Strong and sustainable economic activity and business engagement	Holistic, supportive, and coordinated services that address root causes
Goal: Reduced Crime and Improved Perceptions of Safety	Goal: Increase in Foot Traffic and Positive Activity	Goal: Reduced Vacancy and Turnover	Goal: Coordinated response matching services to the demand (root causes)



# Questions and Discussion Thank you



## Legislation Text

---

**File #:** Inf 2629, **Version:** 1

---

Proposed SDOT 2025 Levy Delivery Plan





## 2024 SEATTLE TRANSPORTATION LEVY

# 2025 Annual Delivery Plan



Published January 31, 2025



**Seattle**  
Department of  
Transportation



# 2024 Seattle Transportation Levy

Seattle voters approved the eight-year \$1.55 billion Transportation Levy in 2024. This levy provides funding to maintain and modernize the City’s transportation infrastructure by building sidewalks, paving streets, repairing bridges, and improving transit connections. These investments are in support of the goals set forth in the Seattle Transportation Plan, a 20-year vision for the future of our transportation system:

- Prioritize safety for travelers in Seattle, with no serious injury or fatal crashes
- Co-create with community and implement restorative practices to address transportation-related inequities
- Respond to climate change through innovation and a lens of climate justice
- Provide reliable and affordable travel options that help people and goods get where they need to go
- Reimagine city streets as inviting places to linger and play
- Improve city transportation infrastructure and ready it for the future

The Seattle Department of Transportation (SDOT) is committed to meeting goals outlined to voters in the 2024 Seattle Transportation Levy legislation [Attachment A](#). As further described in Attachment A, the Levy is organized into 11 program areas. Also shown in this table is the 2025 appropriation for each of these program areas.

Levy Program	8-Year Appropriation	2025 Appropriation
Vision Zero, School and Neighborhood Safety	\$160.5 million	\$16.1 million
Street Maintenance and Modernization	\$403 million	\$43.0 million
Bridges and Structures	\$221 million	\$19.0 million
Transit Corridors and Connections	\$151 million	\$12.6 million
Pedestrian Safety	\$189 million	\$28.9 million
Signals and Operations	\$100 million	\$11.7 million
Bicycle Safety	\$133.5 million	\$16.3 million
People Streets and Public Spaces	\$66.5 million	\$10.2 million
Climate and Resiliency	\$69 million	\$11.0 million
Freight and Goods Movement	\$45 million	\$3.7 million
Good Governance and Equitable Implementation Initiative	\$7.5 million	\$2.2 million
Council District Fund*	\$4 million	\$2.0 million
<b>Total</b>	<b>\$1.55 billion</b>	<b>\$176.8 million</b>

*\*The Council District Fund CIP (MC-TR-C155) has an appropriation of \$4M of Transportation Levy Funds; delivery plan still to be determined*

Each year, SDOT will provide updates on progress toward levy goals, funded by Transportation Levy revenue. Voters approved an eight-year period for property tax collection, though property tax collection can take several more years, and SDOT can only use the funds once they have been collected. Additionally, large capital projects that begin during the collection period may continue to spend levy funds past the collection period. In conclusion, levy spending is expected to continue beyond the eight-year collection period, a standard practice for transportation levies.

# Annual Delivery Plan Purpose

The Annual Delivery Plan (delivery plan) outlines SDOT's plan for work funded by transportation levy dollars each year. SDOT is committed to delivering levy projects as outlined in the delivery plan, and the plan outlined below identifies projects for which the department plans to start building, designing, and planning for in 2025. Due to the complex nature of capital project delivery and unforeseen risks, adjustments to the delivery plan may be necessary to account for changes in project timelines.

## Prioritizing Levy Work and Selecting New Projects

To determine which projects will receive funding through the 2024 Transportation Levy, SDOT used the framework provided by the 20-year Seattle Transportation Plan, a data-driven prioritization process described below, Seattle's Racial and Social Equity Index and Transportation Equity Framework, and community input. SDOT will use this same guidance to continually identify additional Transportation Levy projects across the 11 Levy program areas.

SDOT's data-driven prioritization process is guided by several key factors:

- Program goals, for example, focusing pedestrian improvements in areas with higher demand for walking and rolling and near sensitive land uses, informed by the Seattle Transportation Plan, One Seattle Comprehensive Plan, and SDOT's Asset Management Strategy
- Number of people who could benefit, investing where there is demonstrated need to serve a large number of people and modes of travel
- Geographic distribution, balancing investments where they are most needed around the city
- Optimal investment timing to extend the life of our highest-value transportation assets
- Equity, with a focus on mobility for all people and an emphasis on those who are most vulnerable
- Opportunity to co-create with community or to align with nearby investments
- Leveraging opportunities from a grant or partner investment

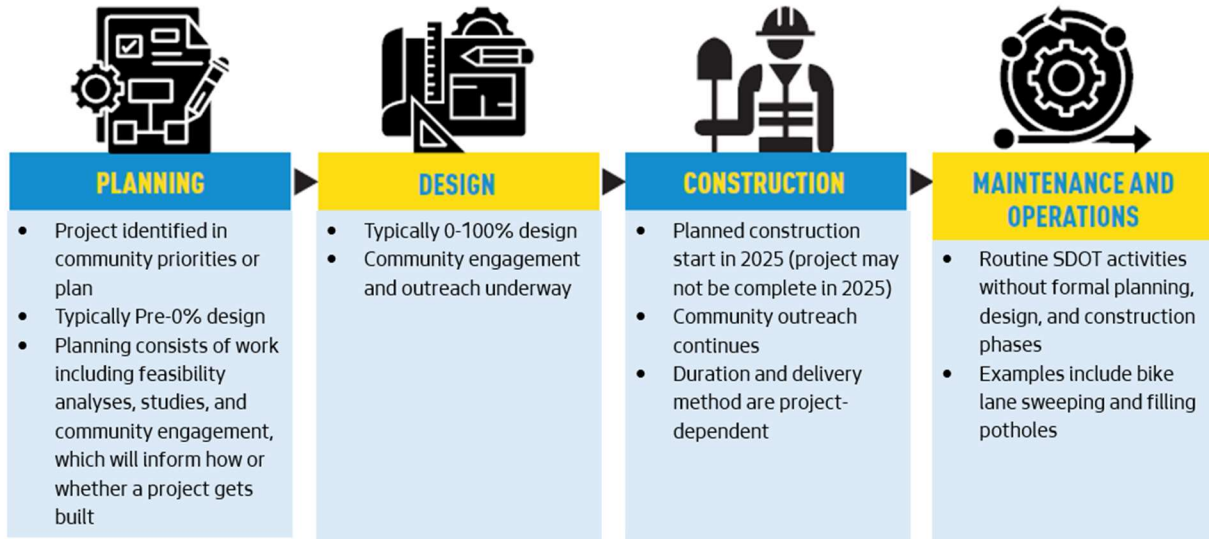
## Expecting and Planning for Changes in the Delivery Plan

Modifications to project timelines can be common, especially on large capital projects with numerous steps required before construction can start. We expect certain risks with every project, and below are several of the common reasons that affect project schedules:

- During the design phase, projects changes or feedback from community outreach can change project schedules
- Prolonged approvals from regional, state, or federal agencies can significantly delay project timelines
- Discovering unexpected geotechnical issues, utility conflicts, or environmental hazards during construction can disrupt schedules
- Delays in securing grant funding or receiving higher-than-expected contractor bids can cause project slowdowns or pauses
- Extreme weather can halt or delay construct activities
- Project schedules can also be reprioritized to address emerging needs and new priorities

## Reading the Delivery Plan

This delivery plan shows planned projects and priorities for 2025. The delivery plan categorizes projects as either scheduled for SDOT to start planning, start designing, or start construction in 2025. The various stages of project delivery are outlined in the chart below.



Additionally, in several areas of the delivery plan some projects are listed under multiple program areas. To maximize the work completed with levy dollars and find efficiencies, multiple programs often contribute funding to individual projects. An example of this is under program area 1.1, (Vision Zero, School and Neighborhood Safety Programs) where the Highland Park Way SW Safety Corridor project will be delivered in partnership with program areas 7.4 and 7.5 (Bicycle Safety Programs).

# Transportation Levy Priorities In 2025

SDOT is launching projects and programs funded by the 2024 Seattle Transportation Levy beginning with the start of revenue collection in 2025. Efforts in the first year are focused on developing new programs, positioning initial levy projects for early 2025 construction, and prioritizing early work on the largest capital projects that require years to develop and construct.

The 2025 Levy Delivery Plan is informed by the [2024 Levy Readiness and Action Approach](#) and the [early actions for three new programs](#): Transit Passenger Safety, Electric Vehicle Charging, and the Neighborhood Initiated Safety Partnership Program.

## 2025 Transportation Levy Priorities

### ***Expanded Vision Zero Work***

- Advance Aurora Avenue N planning in partnership with the Washington State Department of Transportation (WSDOT) and King County Metro (KCM) to identify a preferred alternative and phasing plan that will drive the implementation schedule
- Program the expanded Vision Zero work citywide on high-injury network corridors and intersections and expand Leading Pedestrian Intervals and safer crossings

### ***New Sidewalks***

- Hold community walks to select new sidewalk projects for the first four years of the levy
- Conduct outreach and scope new sidewalks, develop an accelerated sidewalk delivery team, and develop methods to increase sidewalk repair

### ***Bridges and Structures***

- Issue Requests for Proposals and begin design of mechanical and electrical repair packages for Fremont, University and Ballard bridges, program crew-delivered bridge repairs, and initiate Project Readiness bridge studies

### ***Maintenance and Modernization***

- Start design on major corridor maintenance and modernization projects, with early focus on corridors with secured grant funding such as Roosevelt Way NE, Pinehurst Way NE, and E Marginal Way

### ***Downtown Activation***

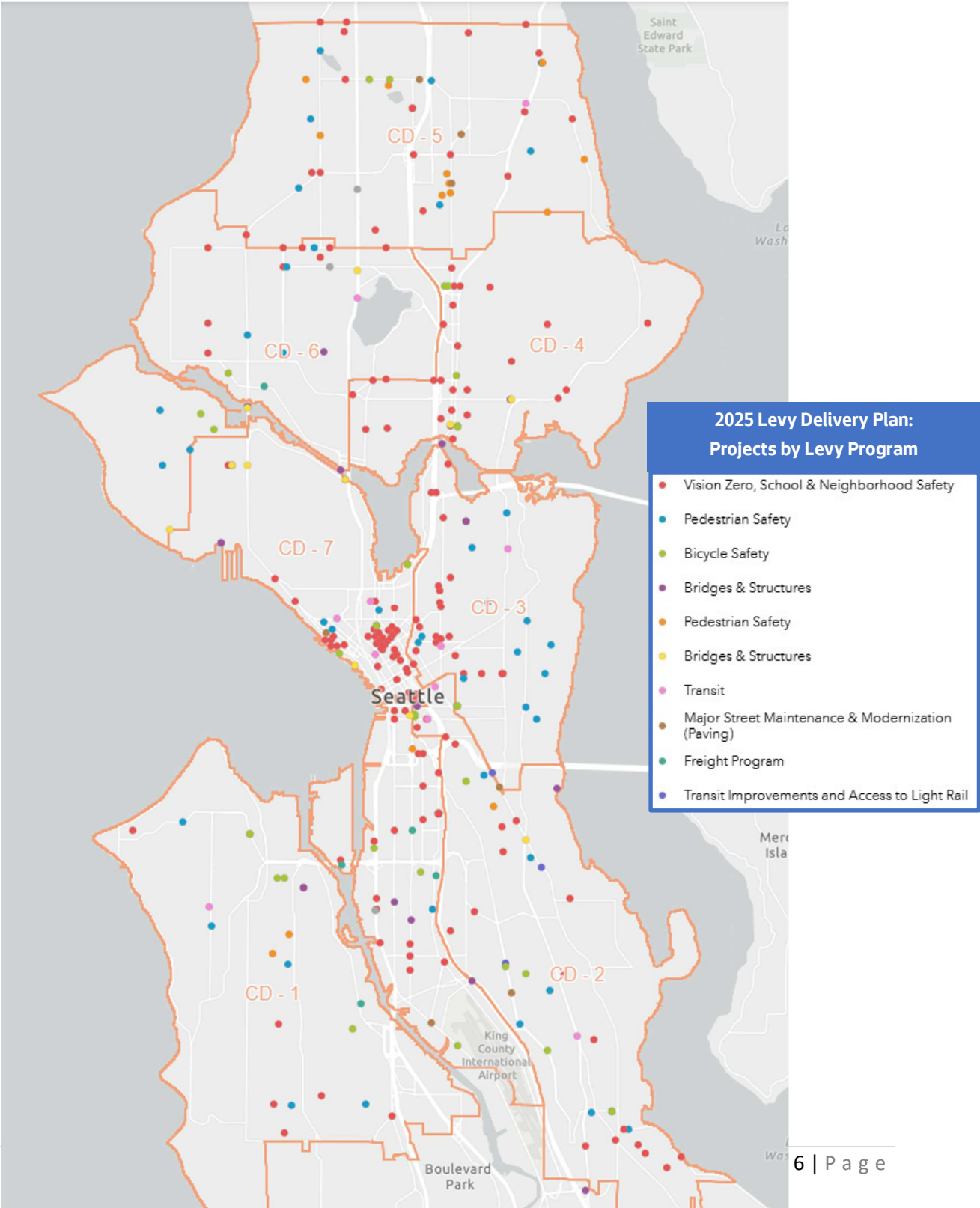
- Continue Downtown Activation and People Streets and Public Spaces investments on 3<sup>rd</sup> Avenue, Fortson Square, Occidental Promenade, and other key locations in advance of major events, in alignment with other organizations and agencies

### ***New Levy Programs***

- Launch new programs including the Neighborhood-Initiated Safety Partnership, Bridge, Preventative Maintenance, Transit Passenger Safety, Bike Lane Maintenance, People Streets and Public Spaces, Climate and Electrification, and the Good Governance and Equitable Implementation Initiative programs

# Map of Signature Projects Planned in 2025

*Note: Map is for illustrative purposes. It denotes known project locations but does not represent all planned 2025 levy projects or routine maintenance activities.*



## Appendix A: Estimated 2025 Levy Investments

<b>1: Vision Zero, School and Neighborhood Safety:</b> Make targeted and community-requested improvements to streets, sidewalks, intersections, and crossings to reduce traffic collisions, severe injuries, and fatalities.		
<b>Program</b>	<b>Cumulative Estimated Levy Investments</b>	<b>2025 Estimated Levy Investments</b>
Vision Zero	<p><b>(1.1) Safety redesign projects</b> on up to 12 corridors on the High Injury Network</p> <p><b>(1.2) Responsive safety projects</b> at up to 40 high-collision locations</p> <p><b>(1.3) Leading pedestrian intervals</b> at 280 intersections</p> <p><b>(1.4) Traffic calming</b> on 50 corridors</p> <p>Anticipated initial Vision Zero projects on:</p> <ul style="list-style-type: none"> <li>• Aurora Ave N</li> <li>• N/NE 85th St</li> <li>• S Othello St</li> <li>• N 105th St/Holman Rd NW</li> <li>• Dexter Ave N</li> <li>• Lake City Way NE</li> <li>• 4<sup>th</sup> Ave S</li> <li>• MLK Jr Way S</li> <li>• Rainier Ave S</li> <li>• Lakeside Ave S at Lake Washington Blvd</li> <li>• N/NE 50th St</li> <li>• Other projects as identified in Vision Zero work plans</li> </ul>	<p><b>(1.1) VISION ZERO CORRIDOR PROJECTS ON HIGH INJURY NETWORKS</b></p> <p><b>Start Construction:</b></p> <ul style="list-style-type: none"> <li>• N 130<sup>th</sup> St Phase 1 Safety Corridor</li> <li>• S Henderson St Safety Corridor</li> </ul> <p><b>Start Design:</b></p> <ul style="list-style-type: none"> <li>• Rainier Ave S Safety Corridor (North Segment)</li> <li>• Renton Ave S Safety Corridor</li> </ul> <p><b>Start Planning:</b></p> <ul style="list-style-type: none"> <li>• 12th Ave S Safety Corridor</li> <li>• S Jackson St Safety Corridor</li> <li>• S Othello St/S Myrtle St Safety Corridor</li> <li>• Spring St Safety Corridor</li> </ul> <p><b>(1.2) HIGH-COLLISION SAFETY PROJECTS</b></p> <p><b>Start Construction:</b></p> <ul style="list-style-type: none"> <li>• 1st Ave S and S Spokane St</li> <li>• 5th Ave and Marion St</li> <li>• 5th Ave and Pike St</li> <li>• E Marginal Way S and S Dawson St (Phase 1)</li> <li>• NE Northgate Way and 1st Ave NE</li> <li>• Broadway and E Pike St</li> <li>• Broadway and E Union St</li> <li>• Burke-Gilman Trail and 30th Ave NE</li> <li>• Eastlake Ave E and Fuhrman Ave E</li> <li>• Harvard Ave and E Pike St</li> </ul>

		<ul style="list-style-type: none"> <li>• <i>Rainier Ave S (S Bayview to S McClellan)</i></li> <li>• <i>Rainier Ave S (S Charlestown to S Andover) Mid-Block</i></li> <li>• <i>Rainier Ave S and S Othello St</i></li> <li>• <i>Roosevelt Way NE and NE 42nd St</i></li> <li>• <i>Roosevelt Way NE and NE 47th St</i></li> <li>• <i>Sylvan Way SW (High Point Dr to Sylvan Heights Dr) Mid-Block</i></li> <li>• <i>University Way NE and NE 50th St</i></li> </ul> <p><b>(1.3) INTERSECTIONS WITH LEADING PEDESTRIAN INTERVALS (LPI)</b>  <b>Start Construction:</b> <i>LPIs</i></p> <p><b>(1.4) TRAFFIC CALMING PROJECTS</b>  <b>Start Construction:</b></p> <ul style="list-style-type: none"> <li>• <i>16th Ave SW – SW Brandon St (Trailhead) to SW Henderson St</i></li> <li>• <i>26th Ave SW – SW Barton St to SW Roxbury St</i></li> <li>• <i>62nd Ave S/64th Ave S – Waters Ave S to S Prentice St</i></li> <li>• <i>Airport Way S – S Holgate St to I-90</i></li> <li>• <i>Fuhrman Ave E – Franklin Ave E to E Shelby St</i></li> <li>• <i>Greenwood Ave N – Holman Rd N to Phinney Ave N</i></li> <li>• <i>MLK Jr Way S – S Ryan Way to S Henderson St</i></li> <li>• <i>Sand Point Way NE – NE 115<sup>th</sup> St to NE 123<sup>rd</sup> St</i></li> <li>• <i>S Roxbury St – Renton Ave S to Waters Ave S</i></li> <li>• <i>SW Trenton St – 35<sup>th</sup> Ave SW to Delridge Way SW</i></li> </ul>
Safe Routes to School	<b>(1.5)</b> Contribute to up to 70 projects to improve safety and fund safety education programs at public schools	<p><b>(1.5) SAFE ROUTES TO SCHOOLS PROJECTS</b>  <b>Start Construction on improvements at schools including:</b></p> <ul style="list-style-type: none"> <li>• <i>13th Ave and E Yesler Way – Bailey Gatzert Elementary</i></li> <li>• <i>Aki Kurose Middle School</i></li> <li>• <i>Beacon Hill Elementary</i></li> <li>• <i>Bertschi School</i></li> <li>• <i>Coe Elementary</i></li> <li>• <i>Concord Elementary</i></li> <li>• <i>Franklin High School</i></li> <li>• <i>Hawthorne Elementary</i></li> </ul>

		<ul style="list-style-type: none"> <li>• Highland Park Elementary</li> <li>• Ingraham High School</li> <li>• James Baldwin Elementary</li> <li>• Jane Addams Middle School</li> <li>• John Muir Elementary</li> <li>• Kimball Elementary</li> <li>• Lafayette Elementary</li> <li>• Lakeridge Elementary (Renton School District)</li> <li>• Madison Middle School</li> <li>• Magnolia Elementary</li> <li>• Maple Elementary</li> <li>• Nathan Hale High School</li> <li>• Pathfinder K-8</li> <li>• Rainier Beach High School (S Henderson St School Safety Project between the Chief Sealth Trail and Seward Park Ave S)</li> <li>• Rainier View Elementary</li> <li>• Sand Point Elementary</li> <li>• Summit Sierra Charter School</li> <li>• View Ridge Elementary</li> <li>• Viewlands Elementary</li> <li>• West Seattle Elementary</li> </ul> <p><b>Start Design on improvements at schools including:</b> Olympic Hills</p>
Aurora Avenue N Safety	(1.6) Aided by state and federal leverage funds, install sidewalks along Aurora Ave N from N 115th St to N 145th St and implement safety improvements including pedestrian lighting and plant trees along Aurora Ave N	<p><b>(1.6) AURORA AVE N SAFETY PROJECT</b></p> <p><b>Continue planning and engagement with WSDOT and King County Metro to identify a preferred alternative.</b></p>
Neighborhood-Initiated Safety Partnership Program	(1.7) Build at least 10 neighborhood-initiated and co-created projects, focusing on community priorities across all districts with an emphasis on equity. This could include	<p><b>(1.7) NEIGHBORHOOD INITIATED SAFETY PARTNERSHIP PROGRAM</b></p> <p><b>Start Planning</b></p> <ul style="list-style-type: none"> <li>• Launch new program</li> </ul>



	safety and mobility enhancements like new sidewalks, crossings, and transit access	
Neighborhood Scale Traffic Safety Programs	(1.8) Address community priorities for neighborhood scale traffic safety improvements. This could include safety and mobility enhancements like traffic calming, new sidewalks, crossings, and transit access.	<p><b>(1.8) NEIGHBORHOOD SCALE TRAFFIC SAFETY IMPROVEMENTS</b></p> <p><b>Start Construction:</b></p> <p><i>Alki Traffic Calming</i></p> <ul style="list-style-type: none"> <li>• 60th Ave SW from SW Admiral Way to Alki Ave SW</li> <li>• 61st Ave SW from SW Admiral Way to Alki Ave SW</li> <li>• 62nd Ave SW from SW Admiral Way to Alki Ave SW</li> </ul> <p><i>Bitter Lake Traffic Calming</i></p> <ul style="list-style-type: none"> <li>• Dayton Ave N from N 143<sup>rd</sup> St to N 145<sup>th</sup> St</li> <li>• Evanston Ave N from N 143<sup>rd</sup> St to N 145<sup>th</sup> St</li> <li>• N 143rd St from Greenwood Ave N to Aurora Ave N</li> <li>• Phinney Ave N from N 143<sup>rd</sup> St to N 145<sup>th</sup> St</li> </ul> <p><i>Little Brook Traffic Calming</i></p> <ul style="list-style-type: none"> <li>• NE 137th St from 30<sup>th</sup> Ave NE to 37<sup>th</sup> Ave NE</li> <li>• NE 140th St from 30<sup>th</sup> Ave NE to 37<sup>th</sup> Ave NE</li> <li>• NE 143rd St from 30<sup>th</sup> Ave NE to Lake City Way NE</li> </ul> <p><i>Northgate Traffic Calming</i></p> <ul style="list-style-type: none"> <li>• 8th Ave NE from NE 96<sup>th</sup> St to NE 103<sup>rd</sup> St</li> <li>• NE 95th from 1st to 5th Ave NE</li> <li>• NE 95th from 8th Ave NE to Roosevelt Way</li> <li>• NE 100th St from 5<sup>th</sup> Ave NE to Roosevelt Way NE</li> </ul> <p><i>Rainier Beach Traffic Calming</i></p> <ul style="list-style-type: none"> <li>• 54th Ave S from S Roxbury St to Renton Ave S</li> <li>• 57th Ave S from S Roxbury St to Renton Ave S</li> <li>• S Norfolk St from Renton Ave S to 59<sup>th</sup> Ave S</li> </ul> <p><b>Start Planning:</b></p> <ul style="list-style-type: none"> <li>• 8<sup>th</sup> Avenue NW at NW 51<sup>st</sup> St, NW 53<sup>rd</sup> St and NW 70<sup>th</sup> St</li> <li>• 49<sup>th</sup> Ave SW and SW Graham St</li> <li>• NE 77<sup>th</sup> St and 21<sup>st</sup> Ave NE</li> <li>• SW Henderson at West Crest Park</li> </ul>
2025 Levy Appropriation		\$16.1M

2: Street Maintenance and Modernization: Repave arterial streets that carry the most buses, trucks, and cars, and improve infrastructure for people walking, rolling, biking, and taking transit.		
Program	Cumulative Estimated Levy Investments	2025 Estimated Levy Investments
Arterial Roadway Maintenance	<p><b>(2.1)</b> Repave approximately 15 major corridors. This will include a combination of roadway reconstruction and preservation projects. Initial projects are anticipated to include portions of the following:</p> <ul style="list-style-type: none"> <li>• N 130th St: 1st Ave NW to I-5</li> <li>• Roosevelt Way NE: NE 92nd St to Pinehurst Way NE</li> <li>• E Marginal Way S: 1st Ave S to 16th Ave S</li> <li>• Rainier Ave S: S Walden St to S Jackson St</li> </ul> <p>Additional corridors that will be evaluated for specific paving extents through a design process include:</p> <ul style="list-style-type: none"> <li>• 15th Ave NE: Pinehurst Way NE to NE 145th St</li> <li>• Pinehurst Way NE: Roosevelt Way NE to 15th Ave NE</li> <li>• NE 65th St: 2nd Ave NE to 35th Ave NE</li> <li>• NW Market St: 15th Ave NW to 24th Ave NW</li> <li>• 23rd Ave E/24th Ave E: E John St to Lake Washington Blvd</li> <li>• Elliott Ave/Western Ave: Bell St to Thomas St</li> <li>• James St: 3rd Ave to Broadway</li> </ul>	<p><b>(2.1) MAJOR CORRIDORS REPAVED</b></p> <p><b>Start Design:</b></p> <ul style="list-style-type: none"> <li>• E Marginal Way S: 1st Ave S to 16th Ave</li> <li>• N 130th St: 1st Ave NW to I-5</li> <li>• Pinehurst Way NE: Roosevelt Way NE to 15th Ave NE</li> <li>• Roosevelt Way NE: NE 92nd St to Pinehurst Way NE</li> </ul> <p><b>Start Planning:</b></p> <ul style="list-style-type: none"> <li>• Beacon Ave S: 14th Ave S to 39th Ave S and 12th Ave S and 14th Ave S: Jose Rizal Bridge to Beacon Ave S</li> <li>• Elliott Ave and Western Ave: Bell St to Thomas St</li> <li>• Rainier Ave S: S Walden St to S Jackson St</li> </ul>

	<ul style="list-style-type: none"> <li>• Beacon Ave S to support Route 36 improvements</li> <li>• 35 Ave SW: SW Alaska St to SW Morgan St</li> <li>• S Albro Pl, Corson Ave S, and Ellis Ave S: E Marginal Way S to I-5</li> <li>• Olson Pl SW/1st Ave S: 2nd Ave SW to SW Cloverdale St</li> <li>• S Henderson St: MLK Jr Way S to Seward Park Ave S</li> <li>• Fauntleroy Way SW: 35th Ave SW to SW Alaska St, to keep roadway functional during light rail construction by making street repairs and spot improvements</li> </ul>	
Paving Spot Improvements	<p><b>(2.2)</b> Repair approximately 400 locations, totaling about 50 lane-miles of pavement on arterial streets</p> <p><b>(2.3)</b> Fill 80% of reported potholes within 72 hours</p>	<p><b>(2.2) SPOT IMPROVEMENTS</b></p> <p><b>*Start Construction on Asphalt Paving, including:</b></p> <ul style="list-style-type: none"> <li>• 3rd Ave W – W Barrett St and W Dravus St</li> <li>• 12th Ave S – Golf Dr S and S Judkins St</li> <li>• 19th Ave E – E Harrison St and E Thomas St</li> <li>• 30th Ave NE – NE 127th St and NE 125th St</li> <li>• 35th Ave SW - SW 106th St and SW 108th St</li> <li>• James St – 7th Ave and 8th Ave</li> <li>• Lake Park Dr S – S McClellan St and Lake Washington Boulevard</li> <li>• Latona Ave NE – NE 52nd St and NE 54th St</li> <li>• N 35th St at Troll Ave N and Albion Pl N</li> <li>• NE 92nd St – 2nd Ave NE and 1st Ave NE</li> <li>• S Holgate St – 6th Ave S and SODO Busway</li> <li>• SW Orchard St – Delridge Way SW and Dumar Way SW</li> <li>• Thorndyke Ave W – W Crocket St and W Plymouth St</li> <li>• Wall St – 4th Ave and 5th Ave</li> </ul> <p><b>* Concrete Paving or Panel Replacement, including:</b></p>

		<ul style="list-style-type: none"> <li>• 16th Ave SW – SW Myrtle St and SW Holly St</li> <li>• 40th Ave NE – NE 51st St and NE 52nd Pl</li> <li>• Delridge Way SW – SW Genesee St and SW Dakota St</li> <li>• East Montlake Place E – E Roanoke St and E Louisa St</li> <li>• Sand Point Way NE – NE 65th St and NE 70th St</li> <li>• SW Alaska St – Fauntleroy Way SW and 38th Ave SW</li> </ul> <p>*The list of planned projects is subject to change due to emerging pavement needs at other locations, unrestored utility trenches and private development conflicts at planned project locations, and other potential extenuating circumstances.</p>
Markings	(2.4) Remark up to 3,600 crosswalks and refresh pavement markings on at least 2,100 miles of roadway	<b>(2.4) CROSSWALKS REMARKED</b> <ul style="list-style-type: none"> <li>• Refresh lane-miles</li> <li>• Remark crosswalks</li> </ul>
<b>2025 Levy Appropriation</b>		<b>\$43.0M</b>

### 3: Bridges and Structures: Keep bridges and structures in reliable working condition and prepare for future bridge projects.

Program	Cumulative Estimated Levy Investments	2025 Estimated Levy Investments
Bridge Structural Repairs and Upgrades	<p><b>(3.1)</b> Upgrade electrical and mechanical systems on moveable Ship Canal Bridges: Ballard Bridge, Fremont Bridge, University Bridge</p> <p><b>(3.2)</b> Make structural repairs on: Ballard Bridge, including potential pedestrian improvements Magnolia Bridge, including potential type/size/location studies for replacement, seismic improvements, and/or improving emergency access to Magnolia</p>	<p><b>(3.1) MOVEABLE SHIP CANAL BRIDGE ELECTRICAL/MECHANICAL UPGRADES</b>  <b>Start Design:</b></p> <ul style="list-style-type: none"> <li>• Ballard Bridge</li> <li>• Fremont Bridge</li> <li>• University Bridge</li> </ul> <p><b>(3.2) BRIDGE STRUCTURAL REPAIRS</b>  <b>Start Design:</b></p> <ul style="list-style-type: none"> <li>• Ballard Bridge</li> <li>• Magnolia Bridge</li> </ul>
Bridge Preventative Maintenance	<p><b>(3.3)</b> <i>Implement preventative maintenance for the City's 134 bridges, making optimum preservation-focused treatment schedules for deck and joint replacement, bridge cleaning and painting, and spot repairs</i></p>	<p><b>(3.3) BRIDGE PREVENTATIVE MAINTENANCE</b>  <b>Start Design</b></p> <ul style="list-style-type: none"> <li>• 4<sup>th</sup> Ave S Over Argo Bridge Preservation</li> <li>• Abandoned Timber Trestle Decommission</li> <li>• Albro Pl/Airport Way S Bridge Repair and Preservation</li> <li>• MLK Ped Bridge Preservation</li> <li>• N 79th St Ped Tunnel Decommission</li> <li>• Phinney Ave N/N 57th St Bridge Upgrade and Preservation</li> <li>• Roosevelt/Campus Pkway Bridge Upgrade and Preservation</li> <li>• S Main St /RR Bridge Preservation</li> <li>• University Bridge Preservation</li> <li>• Yesler Way/5th Ave S Bridge Upgrade and Preservation</li> <li>• W Dravus St and 15th Ave W Bridge Preservation</li> <li>• W Howe St Bridge Preservation</li> </ul> <p><b>Conduct additional maintenance including bridge cleaning and minor repairs</b></p>

Project Readiness	<p><b>(3.4)</b> Advance 6 structures in preparation to seek funding partnerships for future replacement:</p> <ul style="list-style-type: none"> <li>• Elliott Bay Seawall Phase II (north segment)</li> <li>• 1st Ave S Bridge over Argo Railyard</li> <li>• 4th Ave S Bridge over Argo Railyard</li> <li>• W Dravus Street over Railyard</li> <li>• NE 45th St Viaduct Central Span</li> <li>• Magnolia Bridge Replacement Alternatives Cost Estimate updates</li> </ul>	<p><b>(3.4) ADVANCE STRUCTURES IN PREPARATION FOR FUNDING PARTNERSHIPS</b></p> <p><b>Start Planning Studies</b></p> <ul style="list-style-type: none"> <li>• <i>1st Ave S Bridge over Argo Railyard Planning Study</i></li> <li>• <i>4th Ave S Bridge over Argo Railyard Alternative Evaluations</i></li> <li>• <i>Elliott Bay Seawall Planning and Design (environmental permit update)</i></li> <li>• <i>NE 45th St Viaduct Central Span Alternative Evaluations W Dravus St over Railyard Planning Study</i></li> <li>• <i>Magnolia Bridge Cost Estimate update</i></li> </ul>
Areaways	<p><b>(3.5)</b> Improve data collection, strengthen public-private partnerships, pursue grants, and advance repairs</p>	<p><b>(3.5) Areaways</b></p> <ul style="list-style-type: none"> <li>• <i>Start 25 inspections of areaways with limited information and establish a process for researching and documenting ownership of areaways. Identify condition state and owner/maintenance responsibilities for areaways.</i></li> </ul>
<b>2025 Levy Appropriation</b>		<b>\$19.0M</b>

**4: Transit Corridors and Connections:** Connect people safely to transit hubs, including Link light rail stations and bus stops; and reduce delays on bus routes.

Program	Cumulative Estimated Levy Investments	2025 Estimated Levy Investments
Transit Spot Improvements	<p><b>(4.1)</b> Implement 160 projects citywide to improve bus reliability, access, equity, and safety with a focus on performance pinch points affecting multiple routes, such as:</p> <ul style="list-style-type: none"> <li>• SW Oregon St between 44th Ave SW and California Ave SW along routes 50 and 128</li> <li>• MLK Jr Way S between S Myrtle St and S Othello St along Route 106</li> <li>• E Jefferson St between 9th Ave and 12th Ave along routes 3 and 4</li> <li>• W Nickerson St between 3rd Ave W and 4th Ave N along routes 31 and 32</li> </ul>	<p><b>(4.1) TRANSIT SPOT IMPROVEMENTS</b></p> <p><b>Start Construction on spot improvements including:</b></p> <ul style="list-style-type: none"> <li>• <i>Install up to 20 bus benches at various locations</i></li> <li>• <i>Complete Route 125 bus zone Improvements</i></li> <li>• <i>Expand Aurora Ave N bus lane operations between N 38th and N 115th streets</i></li> <li>• <i>Sidewalk repair at bus stops at various locations</i></li> <li>• <i>Conduct historic shelter maintenance - Rainier Ave and S Wildwood St, and Westlake Ave N and Dexter Ave N</i></li> <li>• <i>3rd Ave Reconstruction between Stewart and Virginia streets.</i></li> </ul> <p><b>Start Design on spot improvements including:</b></p> <ul style="list-style-type: none"> <li>• <i>24th Ave Bus Only Lane</i></li> <li>• <i>30th Ave NE Paving and Bus Improvements</i></li> <li>• <i>Broadway Safety Improvements</i></li> <li>• <i>E Jefferson St/9th to 12th Re-channelization</i></li> <li>• <i>Jackson Street Safety Improvements</i></li> <li>• <i>MLK Jr Way S/S Myrtle to S Othello Safety Improvements</i></li> <li>• <i>N 92nd St Bus Bulbs</i></li> <li>• <i>Route 8 Improvements</i></li> <li>• <i>SW Oregon St Asphalt Overlay</i></li> <li>• <i>W Nickerson St/3rd Ave W Re-channelization</i></li> </ul>
Transit Passenger Safety	<p><b>(4.2)</b> Invest in strategies that increase transit rider safety and security, including transit and public safety personnel services in coordination with King County Metro, Sound Transit, and/or other transit agencies</p>	<p><b>(4.2) TRANSIT PASSENGER SAFETY</b></p> <p><b>Launch new transit passenger safety initiatives</b></p>

Transit Improvements and Access to Light Rail	<p><b>(4.3)</b> Make transit improvements on streets with high- ridership bus routes with a focus in equity priority areas, including:</p> <ul style="list-style-type: none"><li>• Rainier Ave S</li><li>• Beacon Ave S</li><li>• Aurora Ave N (funded via Program 1)</li><li>• Denny Way/Olive Way</li></ul> <p><b>(4.4)</b> Build access projects to Link light rail stations such as enhanced bus stops, sidewalks, crossings, bike lanes, and/or lighting:</p> <ul style="list-style-type: none"><li>• N 130th St</li><li>• S Henderson St</li><li>• Judkins Park Station Connections</li></ul> <p><b>(4.5)</b> Advance key connections to future Link light rail stations in coordination with partner agencies:</p> <ul style="list-style-type: none"><li>○ NE 145th St</li><li>○ SW Alaska St</li><li>○ 4th Ave S</li><li>○ S Graham St</li><li>○ East-West South Lake Union Transit Connections</li></ul> <p>Make access improvements to Sound Transit 3 light rail stations and future Sound Transit system expansion</p> <p>Support community-based planning and improvements around the future Graham light rail station and Chinatown/ International District light rail station</p>	<p><b>(4.3) TRANSIT IMPROVEMENTS ON STREETS WITH HIGH RIDERSHIP ROUTES</b></p> <p><b>Start Planning:</b></p> <ul style="list-style-type: none"><li>• Rainier Ave S – S Walden to S Jackson St</li><li>• Rapid Ride R</li><li>• Beacon Ave S</li></ul> <p><b>(4.4) ACCESS PROJECTS TO LINK LIGHT RAIL STATIONS</b></p> <p><b>Start Design:</b></p> <ul style="list-style-type: none"><li>• 130th - Bitter Lake to Haller Lake Mobility Improvements</li></ul> <p><b>Start Planning:</b></p> <ul style="list-style-type: none"><li>• S Henderson St</li></ul> <p><b>(4.5) ADVANCE KEY CONNECTIONS TO FUTURE LINK LIGHT RAIL STATIONS</b></p> <p><b>Start Design:</b></p> <ul style="list-style-type: none"><li>• Harrison St/Mercer St</li></ul>
2025 Levy Appropriation		\$12.6M



**5: Pedestrian Safety: Build and repair sidewalks, crossings, and curb ramps so people walking and rolling can safely get to where they need to go.**

Program	Cumulative Estimated Levy Investments	2025 Estimated Levy Investments
New Sidewalks and Sidewalk Alternatives	<p><b>(5.1)</b> Support construction of at least 350 blocks of new sidewalks, including:</p> <ul style="list-style-type: none"> <li>320 blocks of new sidewalks and sidewalk alternatives, with 250 of these blocks complete or in construction by 2029</li> <li>30 blocks of new sidewalks located on the frequent transit network, separate from sidewalks delivered as part of the Aurora Avenue N Safety project</li> <li>Build any new sidewalks and sidewalk alternatives within: the 1-mile walkshed network of any school (K- 12) and/or local transit stop (transit that runs every half an hour)</li> </ul> <p>Anticipated initial projects include:</p> <ul style="list-style-type: none"> <li>1st Ave NE: NE 120th St – NE 130th St</li> <li>SW Brandon St: 26th Ave SW to 30th Ave SW</li> <li>NE Ravenna Blvd: 12th Ave NE to Brooklyn Ave NE</li> <li>Renton Ave S: 35th Ave S to S Dawson St</li> <li>Greenwood Ave N: N 112th St to N 117th St</li> <li>Gilman Ave W: W Manor Pl to 28th</li> </ul>	<p><b>(5.1) SIDEWALK CONSTRUCTION</b>  <b>Start Construction on new sidewalks and sidewalk alternatives at locations including:</b></p> <ul style="list-style-type: none"> <li>4th Ave S between S Royal Brougham Way and I-90 Off-Ramp</li> <li>13th Ave NW between NW 85th St and NW 90th St</li> <li>21st Ave S between S Bayview St and S Walker St</li> <li>26th Ave S between S Plum St and S Holgate St</li> <li>31<sup>st</sup> Ave NE between NE 110<sup>th</sup> St and NE 115<sup>th</sup> St</li> <li>37th Ave S between S Court St and S Andover St</li> <li>43rd Ave S between S Genesee St and Lake Washington Blvd S</li> <li>Corliss Ave N between N 117th St and N 120th St</li> <li>Gilman Ave W between W Emerson St and 28th Ave W</li> <li>Lake Washington Blvd and S Adams St</li> <li>N 120th St west of 1st Ave NE</li> <li>N 128th St between Meridian Ave N and Densmore Ave N</li> <li>NE 114th St between Roosevelt Way NE and Pinehurst Way NE</li> <li>NE 135th St between 35th Ave NE and Lake City Way NE</li> <li>NE Ravenna Blvd between 12th Ave NE and Brooklyn Ave NE</li> <li>NW 130th St between 1st Ave NW and 3rd Ave NW</li> <li>S Avon St between Beacon Ave S and 56th Ave S</li> <li>S Juneau St between 46th Ave S and 47th Ave S</li> <li>S Juneau St between Martin Luther King Jr Way S and 39<sup>th</sup> Ave S</li> </ul> <p><b>Start Design on new sidewalks and sidewalk alternatives at locations including:</b></p> <ul style="list-style-type: none"> <li>1st Ave NE between N 120th St and N 130th St</li> <li>8th Ave NE between NE 96th St and NE 103rd St</li> <li>Greenwood Ave N between N 112th St and N 117th St</li> </ul>

	<p>Ave W</p> <ul style="list-style-type: none"> <li>• NE 130th St Light Rail Station walkshed</li> <li>• 30th Ave NE: complete missing sections between NE 127th St to NE 145th St</li> </ul> <p><b>(5.2)</b> A minimum of 36% of new sidewalks and sidewalk alternatives delivered by this program will be in District 5. A minimum of 17% will be in District 2. A minimum of 22% will be in District 1.</p>	<ul style="list-style-type: none"> <li>• NE 100th St between 5th Ave NE and 15th Ave NE</li> <li>• NE 103rd St between 5th Ave NE and 15th Ave NE</li> <li>• NE 105th St between 8th Ave NE and Roosevelt Way NE</li> <li>• SW Brandon St between 30th Ave SW and Longfellow Creek Trail and 25th Ave SW and Longfellow Creek Trail</li> <li>• SW Hudson St between Delridge Way SW and 26th Ave SW</li> </ul> <p><b>(5.2) Track geographic distribution of new sidewalks and sidewalk alternatives over the life of the levy.</b></p>
Sidewalk Safety Repair	<p><b>(5.3)</b> Make up to approximately 34,000 spot repairs to sidewalks</p>	<p><b>(5.3) SIDEWALK SAFETY REPAIR</b>  <b>Start Construction on sidewalk repairs at locations including:</b></p> <ul style="list-style-type: none"> <li>• 19th Ave E between E Harrison St &amp; E John St</li> <li>• 35<sup>th</sup> Ave NE between NE 100<sup>th</sup> St and NE 105<sup>th</sup> St</li> <li>• 100 N 85th St</li> <li>• 301 Virginia St</li> <li>• 414 E Pine St</li> <li>• 1117 26th Ave</li> <li>• 1422 34th Ave</li> <li>• 1508 22nd Ave S</li> <li>• 2345 31st Ave S</li> <li>• 2408 24th Ave E</li> <li>• 3016 1st Ave</li> <li>• 6111 15th Ave NW</li> <li>• 9420 Rainier Ave S</li> <li>• Airport Way S between S Snoqualmie and S Oregon St</li> <li>• California Ave SW and SW Edmunds St</li> <li>• E Pike St &amp; Bellevue Ave E</li> <li>• E Yesler Way between MLK Jr Way S and 28th Ave S</li> <li>• Holman Rd NW &amp; 3rd Ave NW</li> <li>• MLK Jr Way between E Howell and E John St</li> </ul>

		<ul style="list-style-type: none"> <li>• <i>S Massachusetts St between Rainier Ave S &amp; 19th Ave S</i></li> </ul>
ADA Program	<p><b>(5.4)</b> Contribute to building 10,000 new ADA-accessible curb ramps citywide (combines with other funds and projects to reach 1,250 annual ramps required by Consent Decree)</p>	<p><b>(5.4) CURB RAMP CONSTRUCTION</b>  <b><i>Start Construction on between 1 and 8 new curb ramps at locations including:</i></b></p> <ul style="list-style-type: none"> <li>• <i>3rd Ave and Stewart St</i></li> <li>• <i>3rd Ave NW and NW 43rd St</i></li> <li>• <i>4th Ave NW and NW 43rd St</i></li> <li>• <i>5th Ave NE and NE 145th St</i></li> <li>• <i>5th Ave NW and NW 43rd St</i></li> <li>• <i>6th Ave NW and NW 43rd St</i></li> <li>• <i>8th Ave W and W Garfield St</i></li> <li>• <i>9th Ave NW and NW 56th St</i></li> <li>• <i>11th Ave NW and NW 58th St</i></li> <li>• <i>14th Ave E and E Thomas St</i></li> <li>• <i>15th Ave E and E Denny Way</i></li> <li>• <i>15th Ave E and E Mercer St (North Leg)</i></li> <li>• <i>15th Ave E and E Mercer St (South Leg)</i></li> <li>• <i>15th Ave NE and NE 145th St</i></li> <li>• <i>16th Ave SW and South Seattle College</i></li> <li>• <i>16th Ave SW and SW Brandon St</i></li> <li>• <i>16th Ave SW and SW Holden St</i></li> <li>• <i>17th Ave NE and NE 145th St</i></li> <li>• <i>18th Ave E and E Thomas St</i></li> <li>• <i>20th Ave NE and NE 145th St</i></li> <li>• <i>20th Ave W and W Dravus St</i></li> <li>• <i>23rd Ave NW and NW 83rd St</i></li> <li>• <i>25th Ave NE and NE 70th St</i></li> <li>• <i>25th Ave NE and NE 145th St</i></li> <li>• <i>30th Ave NE and NE 145th St</i></li> </ul>

		<ul style="list-style-type: none"> <li>• 30th Ave NW and NW 57th St</li> <li>• 30th Ave NW and NW 58th St</li> <li>• 36th Ave SW and SW Andover St</li> <li>• 37th Ave S and S Andover St</li> <li>• 38th Ave W and W Prosper St</li> <li>• 39th Ave SW and SW Genesee St</li> <li>• 39th Ave W and W Prosper St</li> <li>• 46th Ave SW and SW Raymond St</li> <li>• 47th Ave SW and SW Frontenac St</li> <li>• 55th Ave SW and SW Manning St</li> <li>• 60th Ave SW and SW Admiral Way</li> <li>• Boren Ave and Seneca St</li> <li>• Broadway E and E Roy St (West Leg)</li> <li>• Greenwood Ave N and N 54th St</li> <li>• Interlake Ave N and N 48th St</li> <li>• Lake City Way NE and NE 125th St</li> <li>• Lake City Way NE and NE 127th St</li> <li>• MLK Way E and E Thomas St</li> <li>• Roosevelt Way NE and NE 79th St</li> <li>• University Way NE and NE 40th St</li> <li>• W 33rd Ave and W Smith St</li> <li>• Westmont Way W and Morley Pl W</li> </ul>
Stairways	(5.5) Complete up to 9 stairway repairs or expansions	<b>(5.5) STAIRWAY REPAIRS/EXPANSIONS</b> <b>Start Design:</b> <ul style="list-style-type: none"> <li>• 15th Ave and Boston - Howe</li> <li>• 21st Ave SW and SW Dakota St</li> <li>• Garfield St and 5th Ave N</li> <li>• S Brandon St and 39th Ave S</li> <li>• S Atlantic and 15th Ave S</li> </ul>

Crossing Improvements	<p><b>(5.6)</b> Make improvements at street crossings, including upgraded crosswalks, visibility improvements, pedestrian crossing signals, and more. Initial projects are expected to include:</p> <ul style="list-style-type: none"> <li>○ 5th Ave NE and NE Banner Way</li> <li>○ Rainier Ave S and S Henderson St</li> <li>○ 35th Ave NE</li> <li>○ 11th Ave E and E Aloha St</li> <li>○ N 137 St and Roosevelt Way N</li> </ul>	<p><b>(5.6) CROSSING IMPROVEMENTS</b>  <b>Start Construction:</b></p> <ul style="list-style-type: none"> <li>● 1st Ave NE and NE 92nd St</li> <li>● 1st Ave NE and NE 95th St</li> <li>● 7<sup>th</sup> Ave and Lenora St</li> <li>● 10<sup>th</sup> Ave E and E Highland Dr</li> <li>● 10th Ave E and E Yesler</li> <li>● 11th Ave E and E Aloha</li> <li>● 12th Ave NE and NE 43rd St</li> <li>● 12th Ave NE and NE 47th St</li> <li>● 14th Ave and E Alder St</li> <li>● 14th Ave and E Marion Stv</li> <li>● 14th Ave and E Spring St</li> <li>● 14th Ave E and E Remington</li> <li>● 14th Ave S and S Massachusetts St</li> <li>● 34th Ave W and W Amour St</li> <li>● 34th Ave W and W Ruffner</li> <li>● 34th Ave W and W Thurman</li> <li>● 35<sup>th</sup> Ave NE and NE 100<sup>th</sup> St</li> <li>● 43rd Ave E and E Blaine</li> <li>● 43rd Ave E and E Howe St</li> <li>● 43rd Ave E and E Madison</li> <li>● 50<sup>th</sup> Ave S and S Ferdinand St</li> <li>● 51<sup>st</sup> Ave S and S Creston St</li> <li>● Alaskan Way and Wall St</li> <li>● Beacon Ave S and S 27th Ave</li> <li>● Beacon Ave S and S 28th Ave</li> <li>● Beacon Ave S and S Bennett St</li> <li>● Beacon Ave S and S Brandon St</li> <li>● Beacon Ave S and S Holly St</li> <li>● Bellevue Ave E and E Republican St</li> <li>● Bellevue Ave E and E Thomas St</li> <li>● Boren Ave and Columbia St</li> </ul>
-----------------------	--	---

		<ul style="list-style-type: none"> <li>• <i>Delridge Way SW and SW Alaska St</i></li> <li>• <i>Fremont Ave N and N 43rd St</i></li> <li>• <i>Greenwood Ave N and N 76<sup>th</sup> St</i></li> <li>• <i>Greenwood Ave N and N 77<sup>th</sup> St</i></li> <li>• <i>Greenwood Ave N and N 81<sup>st</sup> St</i></li> <li>• <i>Greenwood Ave N and N 83<sup>rd</sup> St</i></li> <li>• <i>Greenwood Ave N and N 95<sup>th</sup> St</i></li> <li>• <i>Lake Washington Blvd</i></li> <li>• <i>NE 50th St and 20th Ave NE</i></li> <li>• <i>NE 70th St and Oswego Pl NE</i></li> <li>• <i>NE Brooklyn and NE 42<sup>nd</sup> St</i></li> <li>• <i>NE Brooklyn and NE 52<sup>nd</sup> St</i></li> <li>• <i>NW 46<sup>th</sup> St between 14<sup>th</sup> Ave NW and 15<sup>th</sup> Ave NW</i></li> <li>• <i>Rainier Ave S and S Cooper St</i></li> <li>• <i>Rainier Ave S and S Henderson St</i></li> <li>• <i>Rainier Ave S and S Kenyon St</i></li> <li>• <i>Rainier Ave S and S Norfolk St</i></li> <li>• <i>Rainier Ave S and S Redwing St</i></li> <li>• <i>Rainier Ave S and S Spencer St</i></li> <li>• <i>Rainier Ave S and S Thistle St</i></li> <li>• <i>S Charlestown St and 34th Ave S</i></li> <li>• <i>S Genesee St and 43rd Ave S</i></li> <li>• <i>S Genesee St and 46th Ave S</i></li> <li>• <i>SW Brandon St and 29th Ave SW</i></li> <li>• <i>SW Henderson St and 9th Ave SW</i></li> <li>• <i>SW Thistle St and 28th Ave SW</i></li> </ul> <p><b>Start Design:</b></p> <ul style="list-style-type: none"> <li>• <i>3<sup>rd</sup> Ave NW between NW Market St and Holman Rd</i></li> <li>• <i>5th Ave NE and Banner</i></li> <li>• <i>5<sup>th</sup> Ave NE and NE 70<sup>th</sup> St</i></li> <li>• <i>5<sup>th</sup> Ave NE and NE 71st St</i></li> <li>• <i>15th Ave NE and NE 85th St</i></li> </ul>
--	--	--

		<ul style="list-style-type: none"> <li>• 23<sup>rd</sup> Ave S between S Jackson St and S Massachusetts St</li> <li>• 35<sup>th</sup> Ave NE and NE 120<sup>th</sup> St</li> <li>• 35<sup>th</sup> Ave NE and NE 123<sup>rd</sup> St</li> <li>• Delridge Way SW and SW Cloverdale St</li> <li>• Greenwood Ave N and N 134<sup>th</sup> St</li> <li>• Magnuson Park along 62<sup>nd</sup> Ave NE, NE 65<sup>th</sup>, and NE 74<sup>th</sup></li> <li>• NE 95<sup>th</sup> St between Ravenna Blvd and 35<sup>th</sup> Ave NE</li> <li>• NW 39<sup>th</sup> Ave St between Leary Way and Fremont Ave N</li> <li>• Rainier Ave S and S Cornell St</li> <li>• Rainier Ave S and S Henderson St</li> <li>• Ravenna Blvd and NE 54<sup>th</sup> St/NE 55<sup>th</sup> St/22<sup>nd</sup> Ave NE</li> <li>• Roosevelt Way and NE 137<sup>th</sup> St</li> <li>• Stone Way between N 36<sup>th</sup> St and N 45<sup>th</sup> St</li> <li>• S Genesee St and 43<sup>rd</sup> Ave S</li> <li>• S Genesee St and 46<sup>th</sup> Ave S</li> <li>• S Genesee St and between 43<sup>rd</sup> Ave S and 45<sup>th</sup> Ave S</li> <li>• S Massachusetts St between Rainier Ave S and 23<sup>rd</sup> Ave S</li> <li>• Waters Ave S and S Fletcher St</li> </ul>
<b>2025 Levy Appropriation</b>		<b>\$28.9M</b>

<b>6: Signals and Operations:</b> Install, maintain, and upgrade traffic signals for safe, reliable movement; improve pedestrian and bike accessibility signals; and support traffic operations during large events, incidents, and for trips in and out of the port.		
<b>Program</b>	<b>Cumulative Estimated Levy Investments</b>	<b>2025 Estimated Levy Investments</b>
Traffic Signal Timing	<p><b>(6.1)</b> Complete 40 corridor signal timing adjustment projects</p> <p><b>(6.2)</b> Implement up to 4 Intelligent Transportation System projects</p>	<p><b>(6.1) SIGNAL TIMING ADJUSTMENT PROJECTS</b>  <b>Start Construction:</b></p> <ul style="list-style-type: none"> <li>• 1st Ave S retiming</li> <li>• Broadway North retiming</li> <li>• North Aurora Ave N retiming</li> <li>• South Aurora Ave N retiming</li> </ul> <p><b>(6.2) ITS PROJECTS</b>  <b>Start Design:</b></p> <ul style="list-style-type: none"> <li>• 80th and 85th ITS Improvements</li> <li>• Phase 1 and 2 of the Downtown Modernization (ITS Network Capital Improvement)</li> </ul> <p><b>Start Construction:</b></p> <ul style="list-style-type: none"> <li>• Phase 1 Downtown Modernization (ITS Network Capital Improvement)</li> <li>• Fiber Network Expansion - SW Admiral Way and 47<sup>th</sup> Ave SW (ITS Spot Capital Improvement)</li> <li>• SMART Phase 1 MLK/Sound Transit</li> </ul>
Traffic Signals and Maintenance	<p><b>(6.3)</b> Design and install traffic signals at up to 10 locations</p> <p><b>(6.4)</b> Complete major maintenance on 40 traffic signals</p> <p><b>(6.5)</b> Add accessible pedestrian signals for at least 50 crossings</p> <p><b>(6.6)</b> Conduct preventative</p>	<p><b>(6.3) NEW TRAFFIC SIGNALS</b>  <b>Start Construction:</b></p> <ul style="list-style-type: none"> <li>• 15th Ave NW and NW 51st St</li> <li>• Aurora Ave N and N 137th St</li> <li>• Boren Ave and Columbia St</li> </ul> <p><b>(6.4) SIGNAL MAJOR MAINTENANCE</b>  <b>Start Construction:</b></p> <ul style="list-style-type: none"> <li>• 3rd Ave NW and NW Market St</li> <li>• 15th Ave S and Lucille St</li> </ul>



	maintenance at traffic signals	<ul style="list-style-type: none"> <li>• 26<sup>th</sup> and Roxbury</li> <li>• California Ave SW and SW Erskine/Edmunds St</li> <li>• S Cloverdale St and Renton Ave S</li> </ul> <p><b>(6.5) ACCESSIBLE PEDESTRIAN SIGNALS</b>  <b>Start Design:</b></p> <ul style="list-style-type: none"> <li>• Aurora Ave N and N 137th St</li> <li>• Boren Ave and Columbia St</li> </ul> <p><b>Start Construction:</b></p> <ul style="list-style-type: none"> <li>• 3rd Ave NW and NW Market St</li> <li>• 4th Ave S and Lucille St</li> <li>• 15th Ave NW and NW 51st St</li> <li>• 15th Ave S and Lucille St</li> <li>• California Ave SW and SW Erskine/Edmunds St</li> <li>• S Cloverdale St and Renton Ave S</li> </ul> <p><b>(6.6) SIGNAL PREVENTATIVE MAINTENANCE</b>  <i>Continued annual preventative maintenance at traffic signals</i></p>
Sign Maintenance	<b>(6.7)</b> Replace at least 5,500 signs	<p><b>(6.7) SIGN REPLACEMENT</b>  <i>Continued annual sign maintenance and replacement projects</i></p>
Transportation Operations	<p><b>(6.8)</b> Research and respond to approximately 24,000 constituent operational complaints and questions</p> <p><b>(6.9)</b> Maintain 24/7 service in the Transportation Operations Center</p>	<p><b>(6.8) CONSTITUENT OPERATIONAL COMPLAINT/QUESTION RESPONSES</b>  <i>Research and respond to complaints and questions</i></p> <p><b>(6.9) TRANSPORTATION OPERATIONS CENTER SERVICE</b>  <i>Maintain 24/7 service in the Transportation Operations Center</i></p>
<b>2025 Levy Appropriation</b>		<b>\$11.7M</b>

<b>7: Bicycle Safety:</b> Expand Seattle’s protected bike lane network; connect schools to bike lanes, paths, and neighborhood greenways; and maintain and upgrade existing bike lanes		
<b>Program</b>	<b>Cumulative Estimated Levy Investments</b>	<b>2025 Estimated Levy Investments</b>
Complete the Burke-Gilman Trail Missing Link	<b>(7.1)</b> Support design and construct completing the Burke-Gilman Trail Missing Link along NW Market St and Leary Way NW	<b>(7.1) BURKE-GILMAN TRAIL MISSING LINK</b> <b>Continue Design:</b> <ul style="list-style-type: none"> <li>• “Missing Link” Bike Route on NW Market St - Leary Ave NW</li> </ul>
Neighborhood Greenways	<b>(7.2)</b> Create bicycle connections for all ages and abilities with at least 5 new neighborhood greenways on residential streets with a focus on K-8 public schools and south Seattle connections. Initial projects include NW 6th Ave from NW 58th St to Carkeek Park	<b>(7.2) NEIGHBORHOOD GREENWAYS</b> <b>Start Construction:</b> <ul style="list-style-type: none"> <li>• 12th Ave NE - Roosevelt Connection</li> <li>• Alki Point - Phase 2</li> <li>• Central Area Healthy Street – Columbia Street</li> <li>• Georgetown Loop Healthy Street &amp; Neighborhood Greenway</li> <li>• Othello Healthy Street</li> </ul> <b>Outreach, Start Design, and Start Planning:</b> Future Projects
Bike Lane Maintenance	<b>(7.3)</b> Maintain existing protected bike lanes with regular sweeping and barrier repair	<b>(7.3) BIKE LANE MAINTENANCE</b> <i>Maintenance includes tuff post replacement and sweeping</i>
Protected Bike Lanes	<b>(7.4)</b> Add concrete-protected bike lanes as part of paving projects, closing gaps in all ages and abilities bicycle network with a focus on improving bicycle connections throughout South Seattle. Initial projects include segments along the following corridors: <ul style="list-style-type: none"> <li>○ N 130 St</li> <li>○ S Henderson St</li> <li>○ Beacon Ave S (Middle and Southern segments)</li> <li>○ Highland Park Way SW</li> <li>○ Cleveland High School Swift Ave S protected bike lane and</li> </ul>	<b>(7.4) NEW PROTECTED BIKE LANES</b> <b>Start Construction:</b> <ul style="list-style-type: none"> <li>• N 130 St (Stone to 1<sup>st</sup> Ave N)</li> <li>• S Henderson St</li> </ul> <b>Start Design:</b> <ul style="list-style-type: none"> <li>• 8th Ave (Westlake to Bell St) PBL</li> <li>• Beacon Ave S Middle Segment</li> <li>• Beacon Ave S Southern (S Myrtle St to 39th Ave S)</li> <li>• Highland Park Way SW (W Marginal Way SW to SW Holden St)</li> </ul> <b>Start Planning protected bike lanes at locations including:</b> <ul style="list-style-type: none"> <li>• 4th Ave PBL between Dilling and Main St</li> </ul>

	<p>Georgetown S Albrow Pl Connection</p> <ul style="list-style-type: none"> <li>○ Chief Sealth Trail: S Myrtle St to S Webster St</li> <li>○ 12th Ave/12th Ave S: E Madison St to Jose Rizal Bridge</li> <li>○ Protected Bike Lane Project in West Seattle to be named in honor of Steve Hulsman</li> </ul>	<ul style="list-style-type: none"> <li>• 12th Ave/12th Ave S between Madison St and Jose Rizal</li> <li>• 14<sup>th</sup> Ave S between S Director St to South Park Bridge at Dallas</li> <li>• 520 Bridge Connections - 10<sup>th</sup> Ave E between E Miller St and Broadway</li> <li>• 520 Bridge Connections - Roanoke between I-5 and Eastlake</li> <li>• Georgetown Connections Study/Albro to Cleveland HS</li> <li>• NE 47th St Bike/Ped Bridge Study</li> <li>• Rapid Ride R Bicycle Facility Alternatives Analysis (Rainier Ave S between MLK Jr. Way S and S Jackson St)</li> </ul>
Upgraded Bike Lanes	<p><b>(7.5)</b> Upgrade 30% of existing protected bike lanes with improved barriers or buffer areas</p>	<p><b>(7.5) PROTECTED BIKE LANE UPGRADES</b></p> <p><b>Start Construction on upgrades at locations including:</b></p> <ul style="list-style-type: none"> <li>• 5th and Main to Jackson</li> <li>• Banner Way between NE 77th St and NE Banner Place</li> <li>• Gilman Ave W/20<sup>th</sup> Ave W</li> <li>• NE Campus Parkway</li> <li>• Ravenna between E Green Lake Way N and 15th Ave NE</li> <li>• SW Admiral Way between SW Spokane St and SW Olga St</li> <li>• SW Andover St between Delridge Way SW and SW Avalon Way</li> <li>• Yesler Way - Boren to 14th</li> </ul> <p><b>Start Design:</b></p> <ul style="list-style-type: none"> <li>• 9<sup>th</sup> Ave Between Bell St and Westlake Ave</li> <li>• Union Street between 14th Ave S and MLK Way Jr S</li> <li>• Wilson Ave S between S Dawson St and S Morgan St</li> <li>• Western Ave between Virginia St and Union St</li> </ul>
Bike Spot Improvements	<p><b>(7.6)</b> Make safety improvements to existing bike lanes, trails and neighborhood greenways</p>	<p><b>(7.6) BIKE SPOT IMPROVEMENTS</b></p> <p><b>Start Construction on improvements at locations including:</b></p> <ul style="list-style-type: none"> <li>• Initial NE 130th Street Protected Bike Lane phase</li> <li>• Microprojects including “Except Bikes” signage retrofits, under Ballard Bridge pathway repair, Queen Anne Ave PBL, and more</li> <li>• Trail pavement repairs and vegetation mitigation</li> <li>• Yesler Way PBL gap between Western and Occidental</li> </ul>

		<p><b>Start Design:</b></p> <ul style="list-style-type: none"> <li>• 1<sup>st</sup> Ave N Trail connection to N 130<sup>th</sup> Street</li> <li>• Chief Sealth Trail - S Juneau St Gap</li> <li>• Melrose Connector Trail and Burke Gilman Drainage Improvements</li> </ul> <p><b>Start Planning:</b></p> <ul style="list-style-type: none"> <li>• 14<sup>th</sup> Ave S Trail gap between S Director St and S Dallas Ave</li> <li>• Chief Sealth Trail gap between S Myrtle St and S Webster Street</li> </ul>
<b>2025 Levy Appropriation</b>		<b>\$16.3M</b>

<b>8: People Streets and Public Spaces:</b> Activate public spaces and improve lighting in partnership with business districts and community organizations so people can enjoy unique and vibrant neighborhoods and business districts.		
<b>Program</b>	<b>Cumulative Estimated Levy Investments</b>	<b>2025 Estimated Levy Investments</b>
People Streets Capital Projects	<p><b>(8.1)</b> Design, implement, and co-create People Street Projects to activate business districts and community spaces, with a focus on high equity priority areas. Improvements could include redesigned streets, seating, wayfinding, lighting, and activation. Anticipated initial projects include:</p> <ul style="list-style-type: none"> <li>• S Henderson St</li> <li>• Occidental Promenade</li> <li>• Chinatown/International District Alley Activation</li> <li>• E Union St Revival Corridor</li> <li>• NE 42nd St Green Street Improvements</li> </ul> <p>Additional projects identified with business districts and community organizations</p>	<p><b>(8.1) PEOPLE STREETS PROJECTS</b>  <b>Start Planning:</b></p> <ul style="list-style-type: none"> <li>• <i>Launch new program</i></li> </ul> <p><b>Start Design and Construction:</b></p> <ul style="list-style-type: none"> <li>• <i>Fortson Square Redesign</i></li> <li>• <i>Occidental Promenade Interim Improvements</i></li> </ul>
Downtown Activation	<p><b>(8.2)</b> Invest in near-term maintenance and placemaking improvements, construction coordination, and advancement of a longer-term vision for 3rd Ave</p>	<p><b>(8.2) 3rd Ave Revitalization Planning and Seed Funds - Construction</b>  <b>Start Design and Construction:</b></p> <ul style="list-style-type: none"> <li>• <i>Art, wayfinding, lighting, enhanced bus shelters, and other amenities to improve the pedestrian and transit user experiences of 3<sup>rd</sup> Ave and downtown in preparation for the FIFA World Cup</i></li> </ul>
Lid I-5 Private Funding Study	<p><b>(8.3)</b> Explore the feasibility of private funding strategies for lidding Interstate 5 between NE 45th St and NE 65th St and around the NE 130th St Light Rail Station</p>	<p><b>(8.3) Lid I-5 Studies</b>  <b>Start Planning:</b></p> <ul style="list-style-type: none"> <li>• <i>Launch new program</i></li> </ul>
People Streets and	<p><b>(8.4)</b> Provide maintenance for existing activation projects and citywide wayfinding</p>	<p><b>(8.4) People Street Projects and Wayfinding Maintenance</b>  <b>Start Design and Construction:</b></p>

Wayfinding Maintenance	system	<ul style="list-style-type: none"> <li><i>Maintenance of existing “pavement-to-parks” locations and wayfinding sign maintenance</i></li> </ul>
Pedestrian Lighting	<b>(8.5)</b> Install pedestrian lighting leading to transit stops	<b>(8.5) Pedestrian Lighting</b> <b>Start Planning:</b> <ul style="list-style-type: none"> <li>Update Pedestrian Lighting Action Plan</li> </ul>
<b>2025 Levy Appropriation</b>		\$10.2M

<b>9: Climate and Resiliency:</b> Address climate change directly, reducing air pollution and making sustainable transportation options more available.		
Program	Cumulative Estimated Levy Investments	2025 Estimated Levy Investments
Climate and Electrification Program	<p><b>(9.1)</b> Support Seattle City Light’s expansion of electric vehicle charging stations to libraries, community centers and parks</p> <p><b>(9.2)</b> Support partnerships and pursue grants that help electrify the transportation system</p>	<p><b>(9.1) (9.2) ELECTRIFICATION</b></p> <p><b>Start Planning:</b></p> <ul style="list-style-type: none"> <li>• <i>Launch new program</i></li> <li>• <i>Evaluate Curbside Electric Vehicle (EV) Charging Pilot</i></li> </ul>
Low Pollution Neighborhoods	<p><b>(9.3)</b> Partner with at least 3 neighborhoods on low pollution pilot projects, which could include low-emissions goods delivery in areas most impacted by climate change</p>	<p><b>(9.3) LOW POLLUTION NEIGHBORHOODS</b></p> <p><b>Continue low-pollution neighborhood planning</b></p>
Urban Forestry	<p><b>(9.4)</b> Plant and maintain trees, meeting the Mayor’s Executive Order for 3 to 1 tree replacement</p> <p><b>(9.5)</b> Expand tree species diversity in areas that historically have had less investment in tree planting and care</p> <p><b>(9.6)</b> Support maintenance and plant establishment for landscape elements of the Central Waterfront Project, including Pioneer Square connections, and Pike/Pine Corridor in coordination with Seattle Center</p>	<p><b>(9.4) (9.5) (9.6) DEVELOP EXPANDED TREE PROGRAM</b></p> <p><b>Start Pruning:</b></p> <ul style="list-style-type: none"> <li>• 3<sup>rd</sup> Avenue Corridor comprehensive tree pruning</li> <li>• Beacon Ave S and Rainier Ave S spot safety pruning</li> </ul>
<b>2025 Levy Appropriation</b>		<b>\$11.0M</b>

<b>10: Freight and Goods Movement:</b> Make freight improvements to support trucks delivering goods and providing services		
<b>Program</b>	<b>Cumulative Estimated Levy Investments</b>	<b>2025 Estimated Levy Investments</b>
Freight Spot Improvements	<b>(10.1)</b> Make at least 32 investments to support the freight network, including adjustments to improve truck movement, intersection upgrades, and additional truck parking	<b>(10.1) FREIGHT SPOT IMPROVEMENTS</b> <b>Start Construction:</b> <ul style="list-style-type: none"> <li>• <i>Airport Way S Rail Crossing Removals</i></li> <li>• <i>Diagonal Ave S Rail Removal</i></li> <li>• <i>Industrial Area Right of Way Activation (signs, striping, ecology block removal, etc.)</i></li> </ul> <b>Start Planning and Design:</b> <ul style="list-style-type: none"> <li>• <i>Holgate Rail Crossing Elimination Study</i></li> <li>• <i>Signal concept for 4th Ave S and S Forest St</i></li> <li>• <i>S Manning St UP Rail Crossing Improvements</i></li> </ul>
Heavy Haul Network	<b>(10.2)</b> In partnership with the Port of Seattle and alignment with the Heavy Haul Network agreement, identify and pave streets that carry the heaviest truck traffic	<b>(10.2) HEAVY HAUL NETWORK INVESTMENTS</b> <b>Start Planning and Design:</b> <ul style="list-style-type: none"> <li>• <i>Harbor Island Scoping and Preliminary Design/Planning</i></li> </ul>
Freight Program	<b>(10.3)</b> Freight improvements to support trucks delivering goods & providing services	<b>(10.3) FREIGHT IMPROVEMENT PROJECTS</b> <b>Start Planning</b> <ul style="list-style-type: none"> <li>• <i>Launch new program</i></li> </ul>
Port Connection to I-90/I-5	<b>(10.4)</b> Implement spot or corridor improvements connecting Port of Seattle facilities through SODO to Interstate 90 and/or Interstate 5	<b>(10.4) PORT SPOT/CORRIDOR IMPROVEMENT PROJECT(S)</b> <ul style="list-style-type: none"> <li>• <i>Start Planning for Port Connection to I-90/I-5</i></li> </ul>
Leary Way Industrial Zone Safety Improvements	<b>(10.5)</b> Implement spot or corridor improvements connecting Maritime, Manufacturing & Logistics (MML) Zones within the Ballard Interbay Northend Manufacturing & Industrial Center (BINMIC) to Interstate 5 and/or SR99	<b>(10.5) LEARY WAY SPOT/CORRIDOR IMPROVEMENTS</b> <ul style="list-style-type: none"> <li>• <i>Develop modal needs and goals along this corridor</i></li> </ul>
<b>2025 Levy Appropriation</b>		<b>\$3.7M</b>



11: Good Governance and Equitable Implementation Initiative		
Program	Cumulative Estimated Levy Investments	2025 Estimated Levy Investments
Oversight Committee Auditing and Professional Services	(11.1) Provide auditing and professional services support for the Levy Oversight Committee	(11.1) Respond to requests from the new LOC for auditing and professional services support.
Property Tax Relief Outreach and Education	(11.2) Support public outreach and education on property tax relief programs	(11.2) Support public outreach and education on property tax relief programs in collaboration with other agencies, and update SDOT website with information and references.
Durable Infrastructure Solutions	<p>(11.3) By January 1, 2029, investigate and propose a comprehensive long-range strategy to:</p> <ul style="list-style-type: none"> <li>• Achieve and maintain an FHWA rating of Good for at least 30% of vehicle bridges and a rating of Fair for at least 60% of vehicle bridges;</li> <li>• Achieve and maintain an average Pavement Condition Index of 80 for arterial streets; and</li> <li>• Complete the missing sidewalk network Tier 1 through Tier 5.</li> </ul> <p>Investigate Transportation Impact Fees as a funding strategy for meeting sidewalk, bridge, and pavement needs and make recommendations for a Transportation Impact Fee proposal.</p>	<p>(11.3) Per Resolution 32145, convene a Transportation Funding Task Force to evaluate and recommended potential policy changes and funding strategies that will improve and maintain the City's transportation infrastructure, with a particular focus on bridges, pavement condition, and sidewalks. In 2025, solicit consultant facilitator, recruit Task Force members, begin Task Force meetings with first six-month report due to the Mayor and the City Council.</p> <p><i>Work with the Mayor's Office and Council to assemble the Transportation Fund Task Force and begin regular meetings and onboarding. Solicit consultant facilitator, recruit Task Force members, begin Task Force meetings with first six-month report due to the Mayor and the City Council.</i></p>
2025 Levy Appropriation		\$2.2M

If you need assistance or translation of this material, please contact us at [MoveSeattle@seattle.gov](mailto:MoveSeattle@seattle.gov) or 206-684-7623.

Servicios de traducción e interpretación disponibles bajo petición 206-684-7623.

요청하시면 번역이나 통역을 제공해드립니다 206-684-7623.

Matutulungan ka naming maintindihan kung hihingi kang tulong 206-684-7623.

Dịch và thông dịch viên sẵn sàng nếu có sự yêu cầu 206-684-7623.

Haddii aad dooneyso turjubeen fadlen wac 206-684-7623.

The Seattle Department of Transportation  
700 5th Ave, Suite 3800  
PO Box 34996  
Seattle, WA 98124-4996  
(206) 684-ROAD (7623)  
[www.seattle.gov/transportation](http://www.seattle.gov/transportation)



**Seattle**  
Department of  
Transportation



# 2025 Levy Delivery Plan

## *Seattle Transportation Levy*

Transportation Committee Briefing  
February 18, 2025



**2024 SEATTLE  
TRANSPORTATION  
LEVY**



**Seattle**  
Department of  
Transportation

# Levy Proviso Lift

- Proviso lift legislation forthcoming for Select Budget Committee consideration
- Increased level of detail in Levy Delivery Plan compared with previous annual levy workplans
- Significant Council input received before Delivery Plan was finalized

23 **BE IT ORDAINED BY THE CITY OF SEATTLE AS FOLLOWS:**  
 24       Section 1. The restrictions imposed by the following budget proviso are removed and  
 25 they are no longer restrictions for any purpose including for subsection 1(b) of Ordinance  
 26 127156:

Template last revised December 9, 2024

1

Bill LaBorde  
SDOT Transportation Levy Proviso Lift ORD  
D1

1

Item	Department	Council Budget Action	Proviso	Fund
1.1	Seattle Department of Transportation	SDOT-002-A-2025	"No more than \$89,000,000 of the Transportation Levy Fund (10399) appropriations in the 2025 budget for the Seattle Department of Transportation (SDOT) may be spent until authorized by future Council action. Council anticipates that such authorization would be granted after SDOT has proactively engaged the Council in the development of detailed spending plans for Transportation Levy programs."	Transportation Levy Fund (10399)

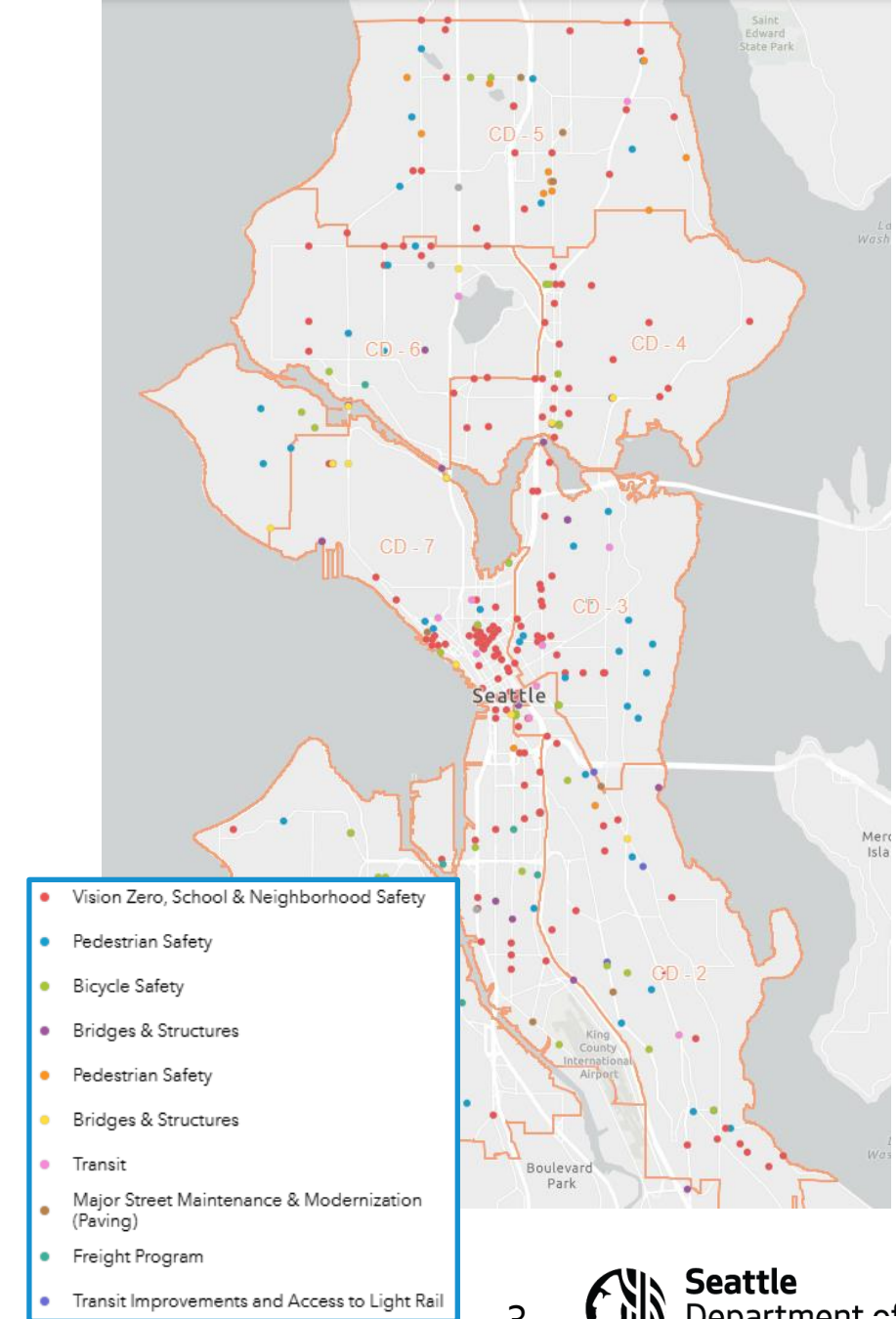
2



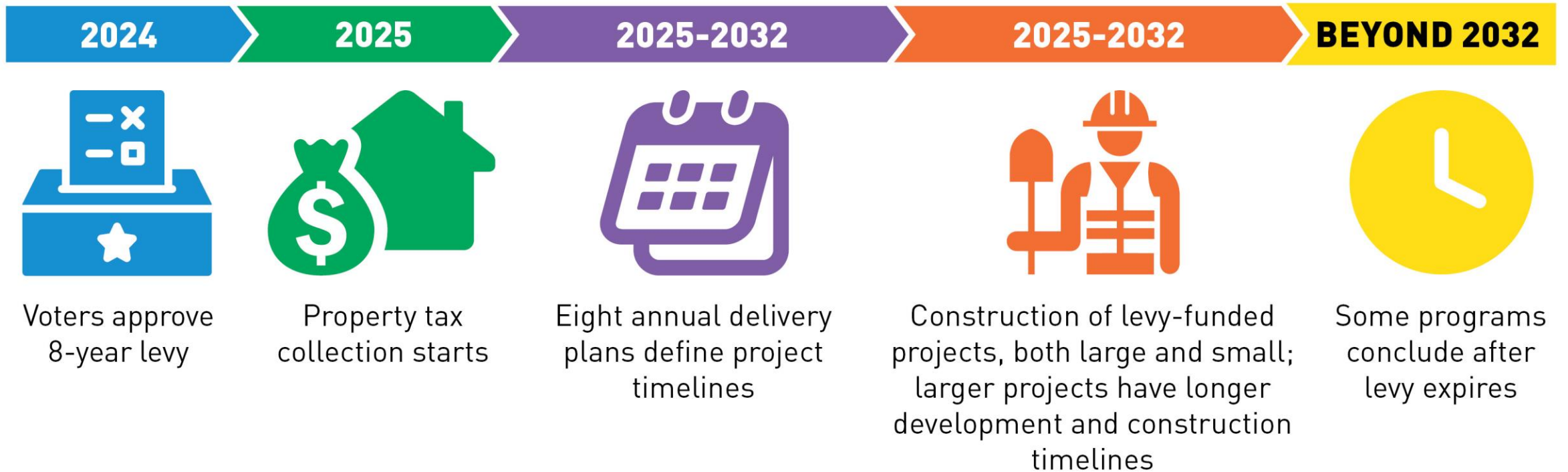
# Today's focus

## 2025 Levy Delivery Plan

- First of eight annual plans
- Plan highlights and examples
- Funding by program
- Large project development
- Next steps



# The life of a levy and levy delivery plan role





# 2025 Transportation Levy highlights

- Expanding Vision Zero work
- Scoping, designing and building new sidewalks and sidewalk alternatives
- Establishing design contracts for bridges and structures
- Designing first maintenance and modernization corridor projects
- Investing in pre-Seattle FIFA World Cup 26™ & Downtown activation
- Launching new levy programs



## Program 5 – Pedestrian Safety

*Pinehurst New Sidewalk Walk on January 25. The first of 10 community walks to identify 250 new blocks of accelerated sidewalks or walkways to build in the first four years of the levy.*

# Examples of initial work in 2025

## Vision Zero, School, and Neighborhood Safety



*Starting construction on safety corridor projects such as on N 130<sup>th</sup> and S Henderson St; safety projects at schools, traffic calming in West and North Seattle, and more*

## Bridges and Structures



*Design bridge structural repairs and upgrades, including on Ship Canal Bridges; continued maintenance on bridges such as cleaning*

## Transit Corridors and Connections



*Transit spot improvements and design of improvements on high-ridership bus routes such as on Rainier Ave S and Beacon Ave S*



# Examples of initial work in 2025

## Street Maintenance and Modernization



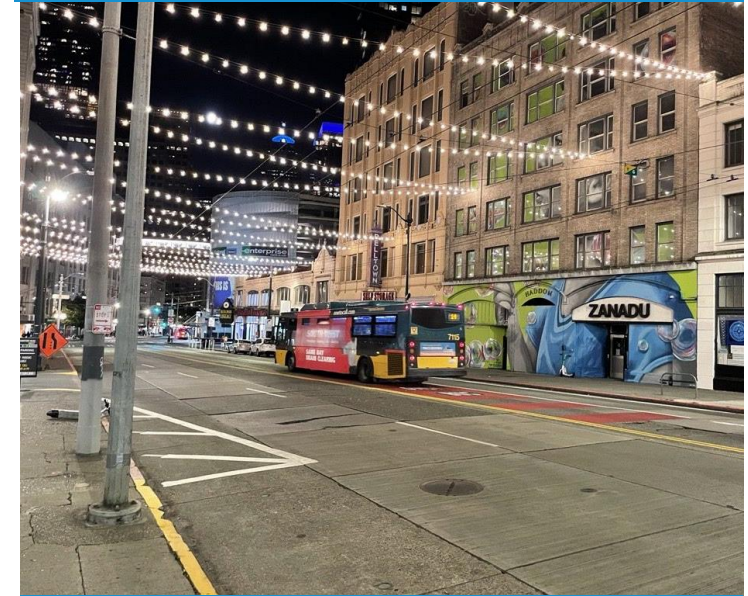
*Maintenance paving, such as panel replacements and filling potholes*

## Bicycle Safety



*Regular bike lane maintenance and improved bike lane barriers at locations including 5th and Main to Jackson, Banner Way, and Gilman Ave W*

## People Streets and Public Spaces



*Symphony Block artist selection and early art delivery. (Catenary lights on the Pine to Stewart block)*

# Transportation levy funding by program

Levy Program	8-Year Appropriation	2025 Appropriation
Vision Zero, School and Neighborhood Safety	\$160.5 million	\$16.1 million
Street Maintenance and Modernization	\$403 million	\$43.0 million
Bridges and Structures	\$221 million	\$19.0 million
Transit Corridors and Connections	\$151 million	\$12.6 million
Pedestrian Safety	\$189 million	\$28.9 million
Signals and Operations	\$100 million	\$11.7 million
Bicycle Safety	\$133.5 million	\$16.3 million
People Streets and Public Spaces	\$66.5 million	\$10.2 million
Climate and Resiliency	\$69 million	\$11.0 million
Freight and Goods Movement	\$45 million	\$3.7 million
Good Governance and Equitable Implementation Initiative	\$7.5 million	\$2.2 million
Council District Fund*	\$4 million	\$2.0 million
<b>Total</b>	<b>\$1.55 billion</b>	<b>\$176.8 million</b>



# Project selection

SDOT's data-driven prioritization process is guided by:

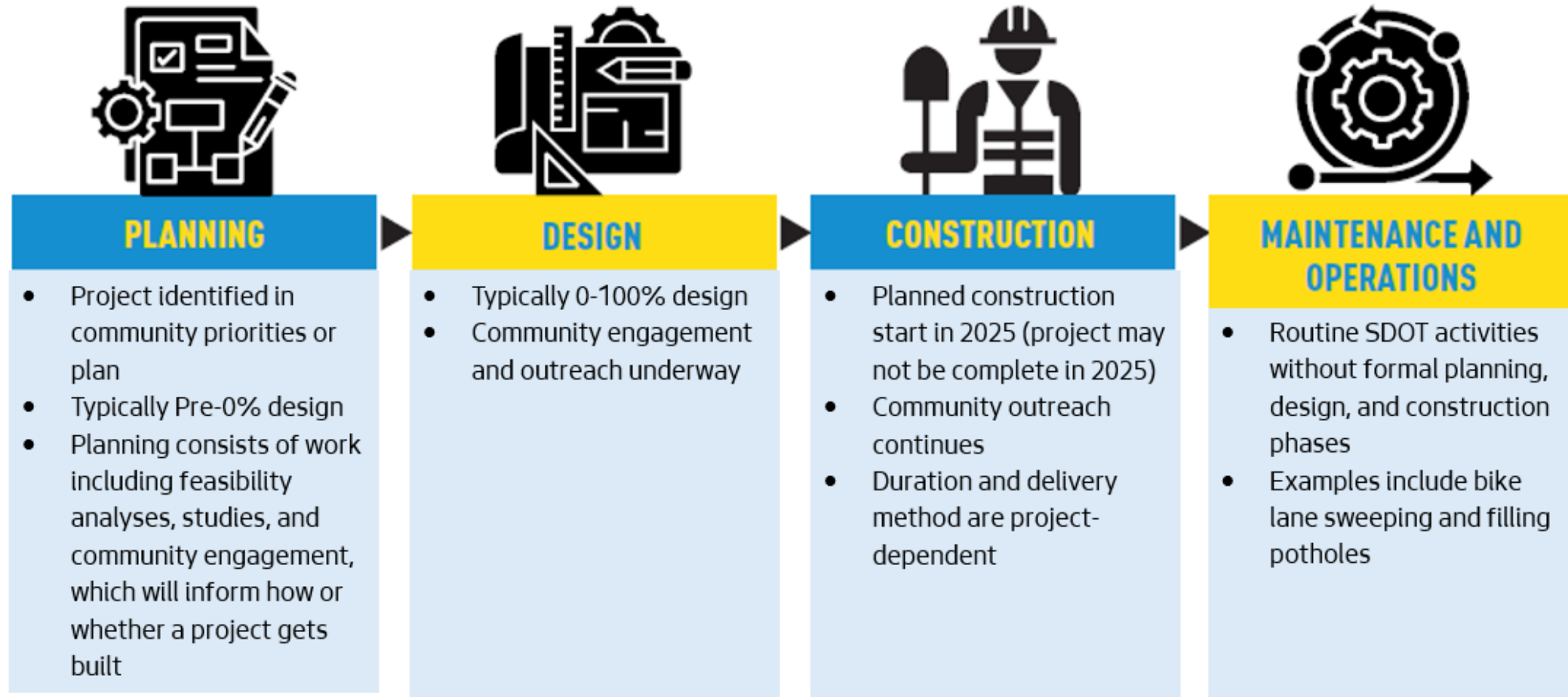
- Program goals informed by the Seattle Transportation Plan, One Seattle Comprehensive Plan, and our asset management strategy
- Equity
- Number of people who benefit
- Geographic distribution
- Optimal investment timing and leveraging opportunities
- Community co-creation opportunity

Plans and policies guiding program goals and priorities:

- One Seattle Comprehensive Plan
- Seattle Transportation Plan
- SDOT's Asset Management Strategy
- SDOT's Transportation Equity Framework

# Setting the foundation for large projects

The Levy Delivery Plan shares projects starting planning, design, construction, or maintenance in 2025. Because some projects take 3+ years from inception through construction, work in 2025 lays the foundation for next 8 years.






# Next steps

## 2025 Levy Delivery Plan

- Proceed with next steps to lift levy budget proviso
- Select Levy Oversight Committee (LOC) members (recruitment underway)
- Plan, design and build projects





A blue-tinted photograph of a city street in Seattle. In the foreground, a group of pedestrians is walking on a sidewalk. A light rail tram is moving along the street, featuring a colorful advertisement for the 'Jim Henson Exhibition' at the 'MUSEUM OF POP CULTURE'. The tram's destination sign reads 'LAKE UNION'. In the background, there are modern buildings, a construction crane, and traffic lights.

**For more information:**  
**[Seattle.gov/transportation/levy](https://seattle.gov/transportation/levy)**