

SCL Easement Conveyances to King County and Puget Sound Energy ORDs

Parks and City Light Committee Meeting

May 20, 2026



SCL Easement Conveyances

- Seattle City Charter grants City Council powers by ordinance for acquisition or disposition of real property on behalf of the City government ([City Charter Article IV, Section 14](#), Subsection 4).
- Authorizes SCL GM/CEO to execute easements with King County and Puget Sound Energy.
- Enables partner projects to move forward with no impact to SCL operations.

Easement Conveyance to King County

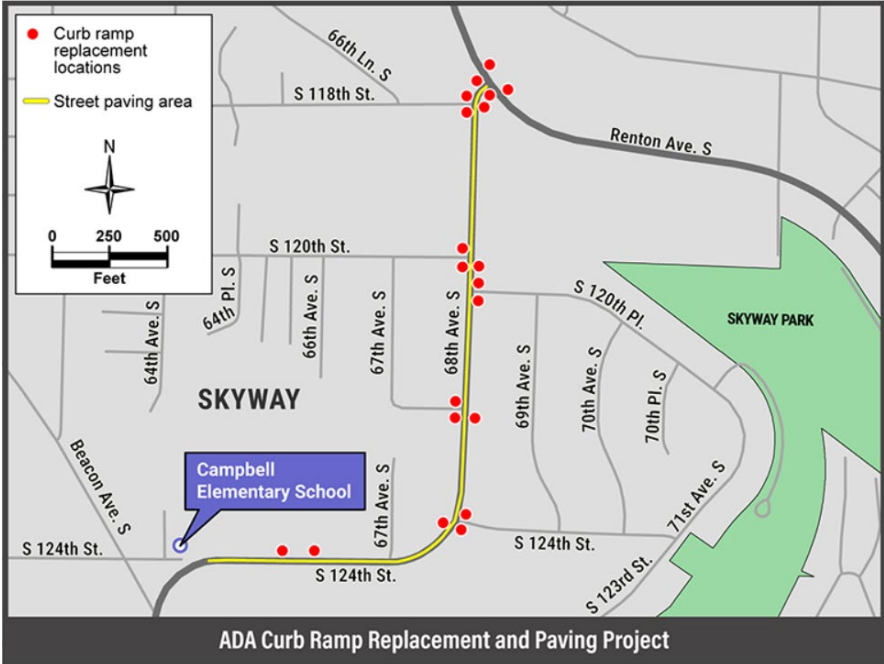
- SCL-owned parcel in Unincorporated King County (Skyway)
- Part of transmission corridor.



Easement Conveyance to King County Project



Project location map



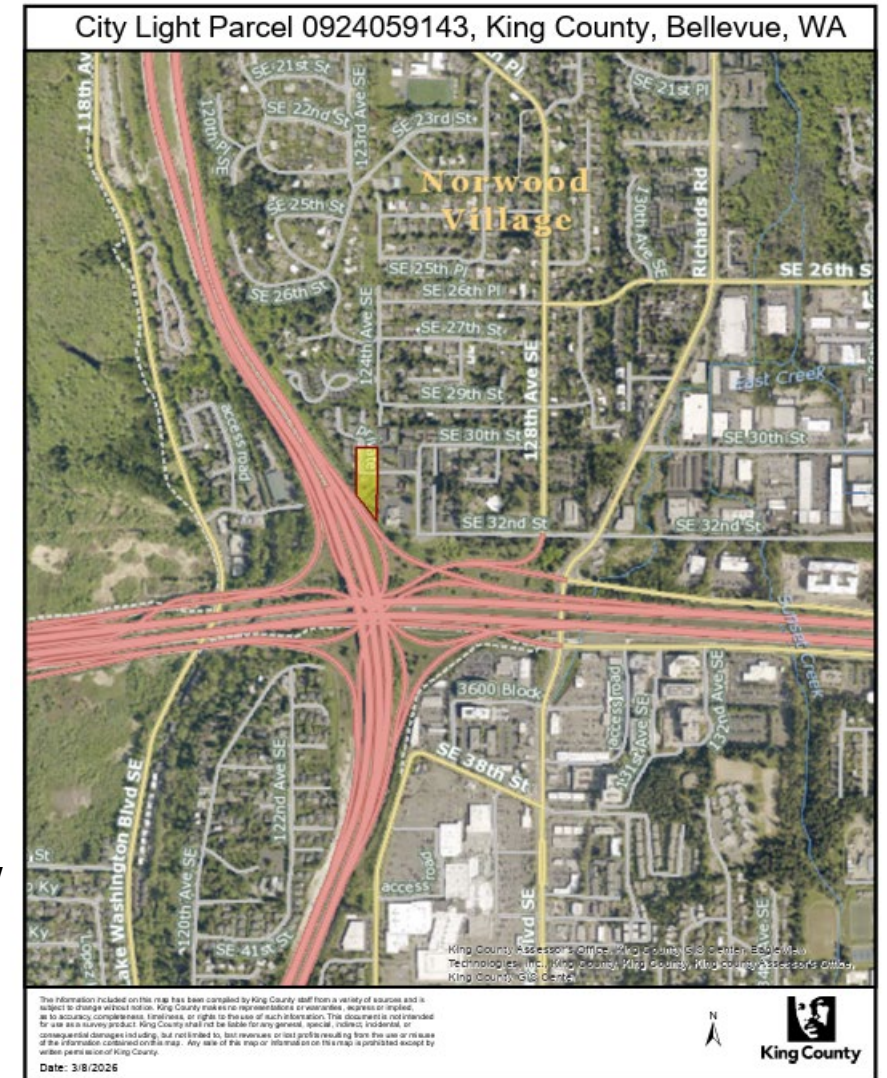
- King County project to improve sidewalk safety and accessibility at seven intersections along 68th Ave S/S 124th St

Easement Conveyance to Puget Sound Energy

- SCL parcel in Bellevue near I-90 & I-405 interchange.
- Existing T-Mobile equipment on SCL transmission pole.
- Upgrades require generator power from nearby Puget Sound Energy gas line.

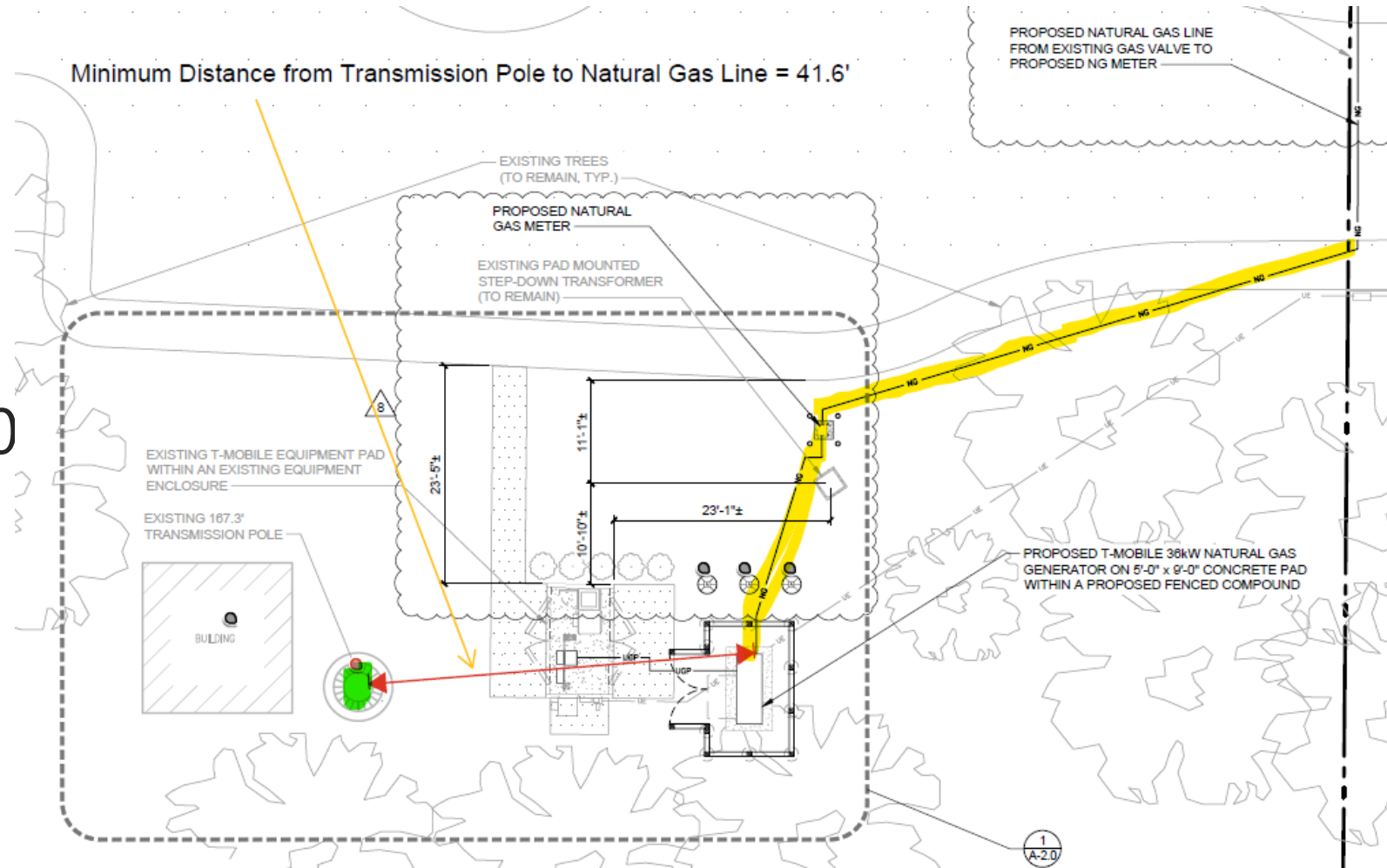


Google street view



Easement Conveyance to Puget Sound Energy

- Easement enables PSE gas line to support T-Mobile equipment
- 10' x 90' easement area (900 SF)
- Fair market value: \$6,800
- No impact to SCL operations



THANK YOU



Seattle City Light



Seattle City Light

seattle.gov/city-light



Mission, Vision & Values

Mission

Seattle City Light provides our customers with affordable, reliable and environmentally responsible energy services.

Vision

Create a shared energy future by partnering with our customers to meet their energy needs in whatever way they choose.

Values



Customers First



Environmental Stewardship



Equitable Community Connections



Operational and Financial Excellence



Safe and Engaged Employees



Seattle City Light

WE POWER SEATTLE