

Seattle Neighborhood Impact Framework

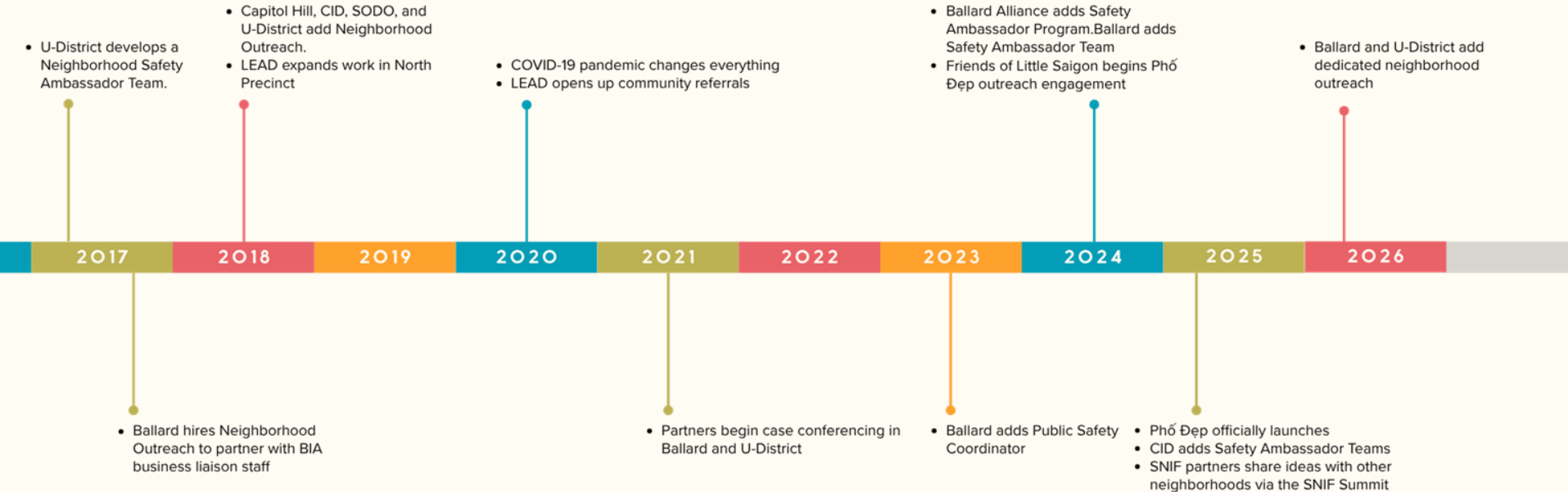
Presented By:



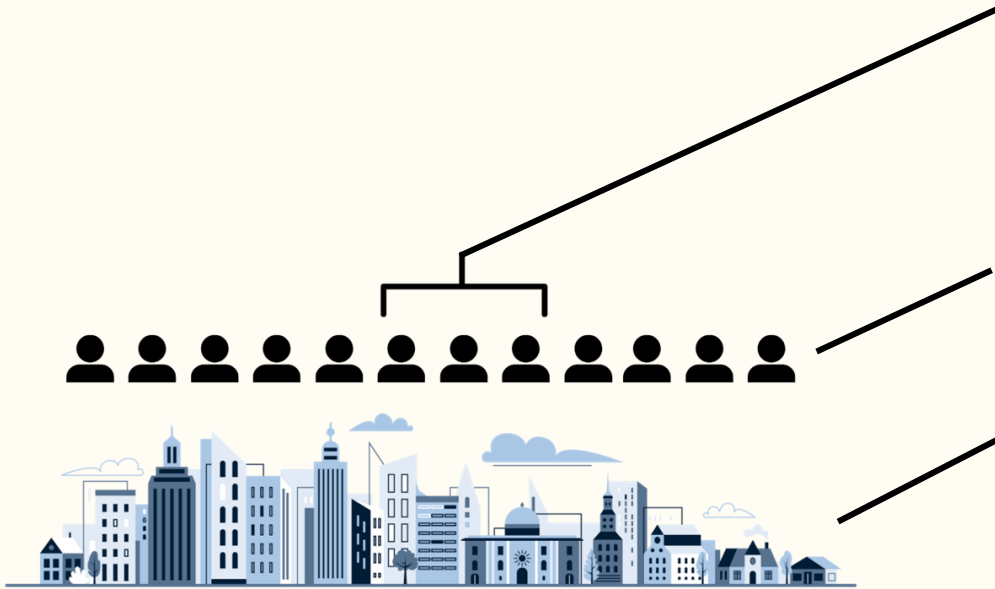
NEIGHBORHOOD IMPACT PRIORITIES

- Identifying and prioritizing perceived and actual public safety concerns
- Close coordination between SNIF partners to more effectively respond to concerns
- Create an efficient “front door” to long-term care strategies, allowing SNIF partners to prioritize scarce resources for issues of the greatest community concern

EVOLVING COMMUNITY RESPONSES



CRITICAL COMPONENTS (THE WHO)



INTENSIVE CASE MANAGEMENT

- Intensive case management and care planning for smaller number of high priority individuals with complex needs
- Specialized by program

NEIGHBORHOOD OUTREACH

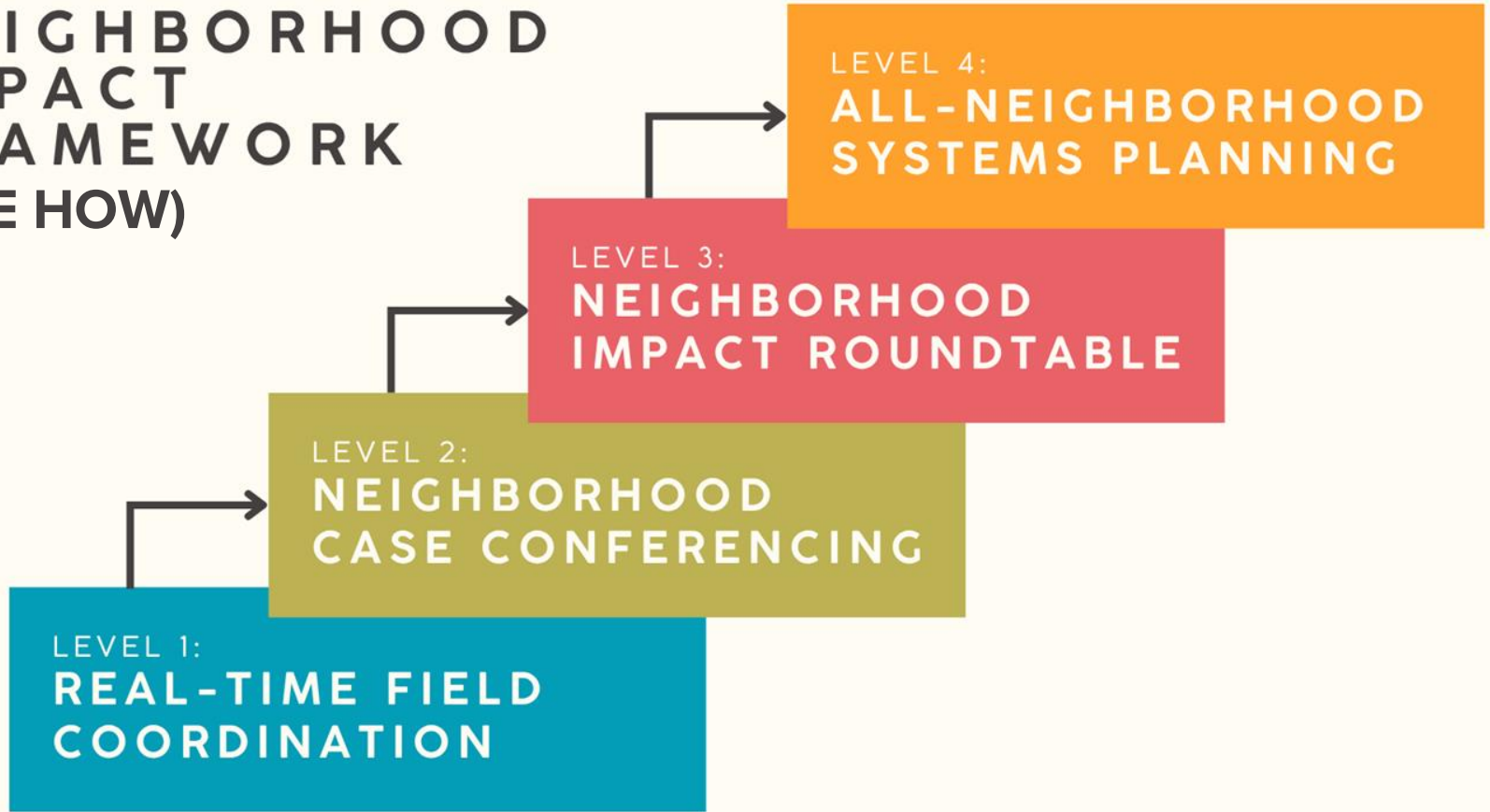
- Relationship building, needs assessments, light touch support for population encountered in neighborhood
- Coordination with neighborhood stakeholders around public health outcomes

PUBLIC SAFETY COORDINATOR + AMBASSADORS

- Neighborhood issue identification and prioritization
- Ambassadors provide business/resident response, deescalation, and ongoing milieu management

*PROJECT MANAGEMENT facilitates coordination framework

NEIGHBORHOOD IMPACT FRAMEWORK (THE HOW)



CASE STUDY: A FRONT DOOR FOR LONG-TERM CARE STRATEGIES

- In the Chinatown-International District, Ambassador teams have logged over 6000 encounters between over 1100 unique individuals
- A relatively small number of individuals comprise a disproportionate number of encounters
- Unique opportunity in summer of 2025: SNIF partners connect priority individuals to CoLEAD low-barrier/high-support shelter



CASE STUDY: A FRONT DOOR FOR LONG-TERM CARE STRATEGIES

- 41 individuals connected to CoLEAD high-support shelter via SNIF coordination
 - 95% have achieved recovery-related outcomes
 - 90% have achieved housing-related outcomes
 - Over a 50% decrease in Ambassador encounters for this cohort
- Connections to long-term care strategies continuing at the rate of resource availability
- Resources prioritized based on ongoing impact data collection and in close collaboration with Phổ Đẹp



SNIF Implementation Spectrum

Building the front door

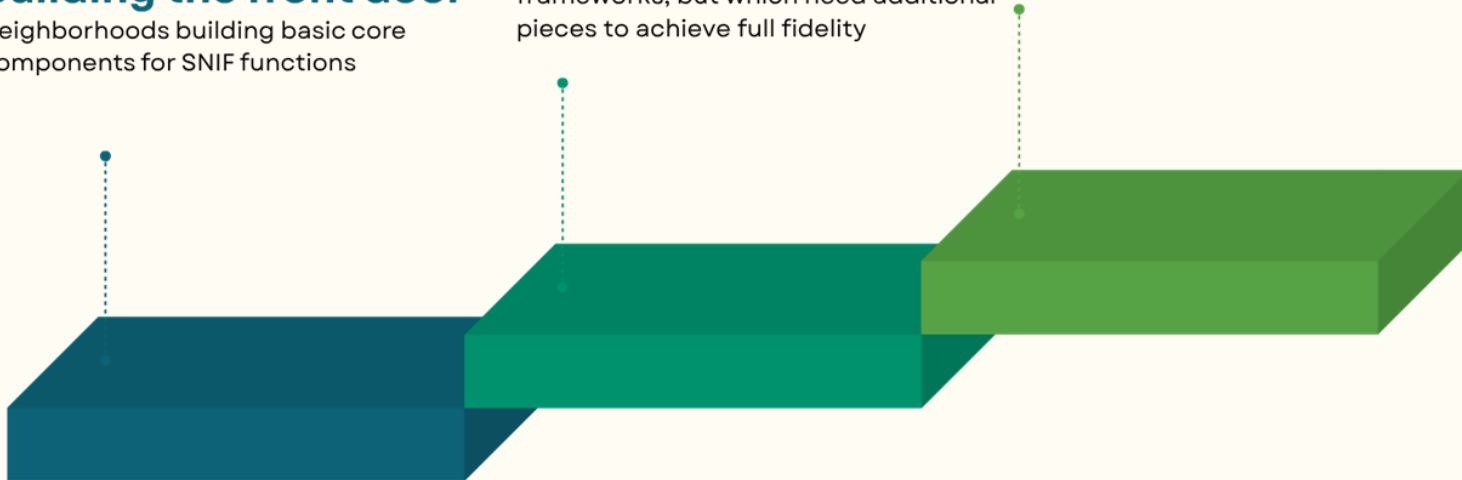
Neighborhoods building basic core components for SNIF functions

Filling in the gaps

Neighborhoods with operating SNIF frameworks, but which need additional pieces to achieve full fidelity

Functioning at fidelity

Neighborhoods with pieces in place, whose remaining limitations stem from lack of access to long-term care resources like mobile behavioral health supports, intensive case management, or low-barrier/high-support shelter



NEXT STEPS

BUILD NEIGHBORHOOD IMPACT FRAMEWORKS

- Building core functions in neighborhoods new to SNIF
- Addressing needed components in existing SNIF neighborhoods, including dedicated neighborhood outreach
- Continued investment in SNIF components where already funded

ALIGN WITH LONG-TERM CARE

- Invest in long-term care strategies, including
 - Low-barrier/high-support shelter units
 - LEAD case management
 - HOST case management
 - Mobile behavioral health support
- Align long-term care strategies with SNIF framework