

Office of Sustainability & Environment Introduction

Lylianna Allala
Acting Director, OSE

4/29/2026



Seattle
Office of Sustainability
& Environment

Agenda

- About the Office of Sustainability & Environment
- How We Approach Our Work
- Core Policies & Programs
- Looking Ahead to 2026



About the Office of Sustainability & Environment



Seattle
Office of Sustainability
& Environment

Meet the Office of Sustainability & Environment

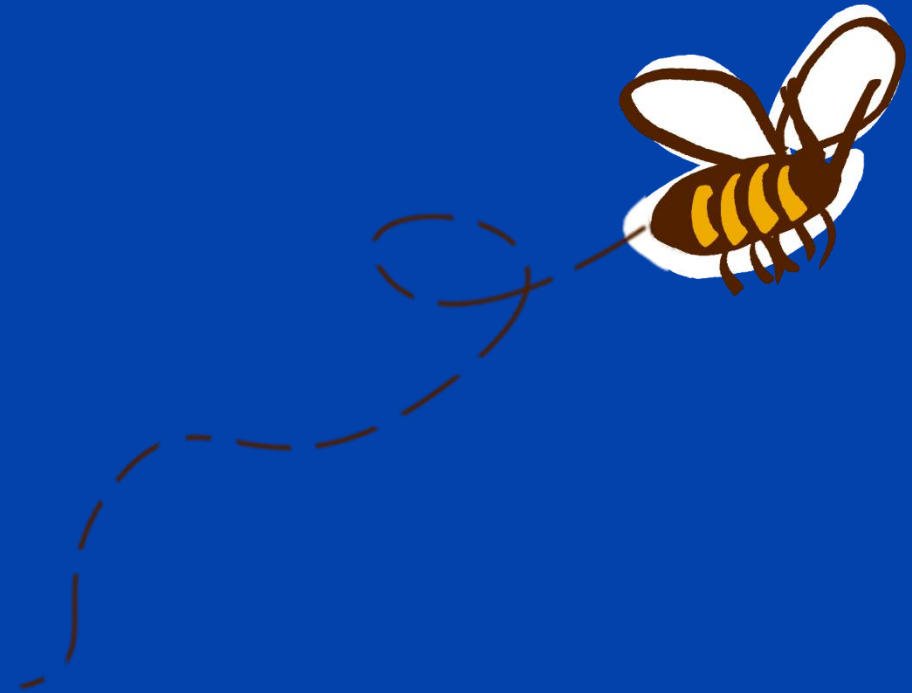


OSE works to ensure a clean and healthy environment for all Seattle residents.

- We **prioritize those currently and historically harmed by racial, economic, and environmental injustice.**
- We serve as cross-departmental and community **collaborators, innovators, and drivers of cutting-edge policy.**
- We contribute to a Seattle where communities and the environment are **healthy and free of fossil fuel pollution.**



How We Approach Our Work



Seattle
Office of Sustainability
& Environment

We prioritize those currently and historically harmed by racial, economic, and environmental injustice.

The **Equity & Environment Agenda** is a blueprint for advancing race and social justice in Seattle's environmental work.

We intentionally embed these values throughout our work.



We use science, data, and storytelling to drive innovative policies in service to improving health and environmental outcomes.

Science-based Approach

- Understanding how climate change is impacting the region and people's health.

Tracking Data & Impact

- Reporting GHG emissions, canopy cover, air quality metrics, and more.

Storytelling & Direct Engagement

- Understanding the people behind the numbers through community and cross departmental partnerships

We drive collaboration across departments and with leaders across Seattle



We work across sectors and with state and regional and international partners

- Leverage **Climate Commitment Act (CCA)** funding to invest in clean energy, electrification and community resilience.
- Working with Puget Sound Clean Air Agency, King County, Washington State going to be convening partners at a regional level to inform our **Climate Action Plan**.
- Work with OIR to support standards under the **Clean Energy Transformation Act (CETA)**, **Clean Fuel Standard** to cut transportation emissions, and **Healthy Environment for All (HEAL)** Act.
- **Milan Urban Food Policy Pact** committing to 'developing sustainable food systems



We uplift community-driven solutions and expertise



Green New Deal Oversight Board



Urban Forestry Commission

- | | | | | | |
|--|--|--|--|--|--|
|  |  |  |  |  | |
| Joey Lu
#1: Food Access | Barbara Baquero
#2: Food Access | Nurhaliza Mohamath
#3: Food Access | Bilan Aden
#4: Community | Tanika Thompson Bird
#5: Community | |
|  |  |  |  |  |  |
| Angie S. Wood
#6: Public Health Nutrition | Yamila Sterling-Baker
#7: Public Health Nutrition | Jen Moss
#8: Public Health Nutrition | Barbara Rockey
#9: Public Health Nutrition | Laura Nicholson
#10: Early Learning | Dan Torres
#11: Early Learning |

Sweetened Beverage Tax Community Advisory Board

OSE Core Programs & Policies



Seattle
Office of Sustainability
& Environment

OSE's Primary Areas of Work

Citywide
Climate
Action Plan
Update

Advancing
Environmental
Justice

Reducing Climate
Pollution

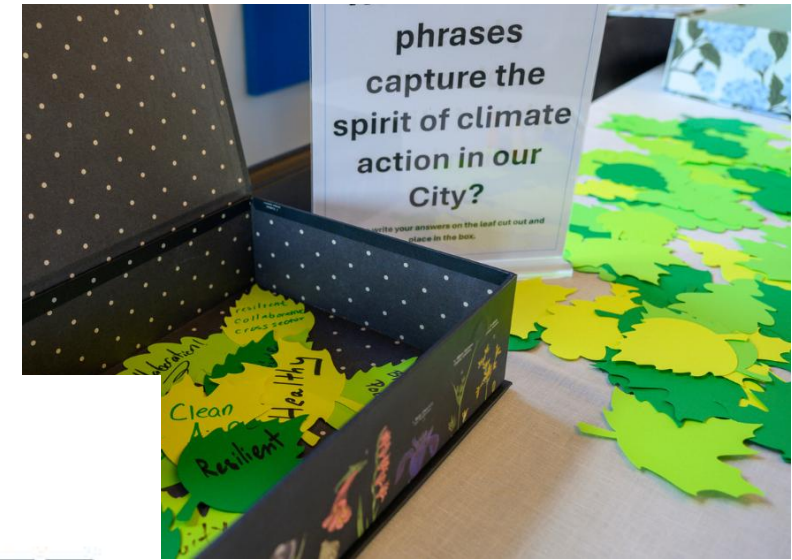
Growing and
Stewarding
Seattle's Trees

Increasing Food
Access and
Sustainability



Citywide Climate Action Plan Update

- Seattle's **Climate Action Plan (CAP)** is a coordinated strategy for reducing GHG emissions, adapting to our changing climate, and supporting community wellbeing, resilience, and environmental justice.
- OSE is leading **cross departmental workgroups** and **Directors Forum**, convening and collaborating with **regional partners**, and hosting **community assemblies** to center feedback from community-led organizations most impacted by climate change.
- Stay tuned for our deep dive coming up next!



Seattle **CLIMATE ACTION PLAN**



Advancing Environmental Justice

- OSE manages the **Environmental Justice Fund** and recently partnered with Seattle Foundation to launch the **First People's Climate Fund**, a one-time investment of \$5.5M to support indigenous sustainability leadership.
- We are building an **inclusive climate workforce** that creates equitable pathways into the green economy to ensure a just transition away from fossil fuels.
- OSE oversee the City's **Green New Deal Oversight Board** and works closely with communities that are most overburdened by the consequences of climate change for a holistic approach to environmental sustainability and social justice.



Youth observing beach and tide pool creatures as part of EJ Fund grantee Sea Potential's work to teach kids about marine biology. Photo by Sea Potential.



Advancing Environmental Justice

- Building **climate resilience** to support city and communities before, during, and after climate emergencies.



Community partners gather in a pilot of the Climate Ready Curriculum focused on how to prepare for extreme heat and wildfire smoke in the Seattle area.

- The **Duwamish Valley Program** advances environmental justice, equitable development, and climate resilience where residents are hit hardest by climate and environmental impacts.



First-of-its-kind map tracks City-funded projects improving affordability, green spaces, transportation, and climate readiness

Reducing Climate Pollution

Building Emissions

- OSE leads the **Building Emissions Performance Standards**, which requires large buildings to reach net zero emissions by 2050.
- The **BEPS Navigator** program provides grants and assistance to help under resourced buildings reduce fossil fuels.
- Working to increase energy efficiency and eliminate fossil fuels in all **City-owned buildings** by 2042.
- On track to eliminate heating oil by 2030 through the **Clean Heat Program**. More than 300 homes have converted from oil heat to energy efficient heat pumps and more than 2,000 since program started in 2017!



“ My favorite thing about my heat pump is it’s clean. As we’re getting older, clean air is very important. ”

Bonnie Thompson
Seattle Resident

Clean Heat program participant, Bonnie Thompson, appreciates the clean air from the heat pump.



Reducing Climate Pollution Transportation

- Advance the **TE Blueprint** which includes six ambitious goals to reduce emissions from transportation.
- Partner with SDOT and C40 to design and implement **Low Pollution Neighborhoods**
- **Heavy Duty Electric Trucks** program is partnering with Zeem Solutions to help bring new electric drayage trucks to the port of Seattle.



"Through our partnership with the City of Seattle we can help small fleet operators tap into funding opportunities and overcome the upfront cost barrier to electrification."

-Paul Gioupis, founder and CEO of Zeem Solutions

Increasing Food Access and Sustainability

- Work is guided by the **Food Action Plan**
- **Fresh Bucks** program is highly effective and impactful in increasing access to fresh fruits and vegetables. This year, the program was expanded to 17,000 households
- The **Fresh Fruit & Vegetable Program** provided 489,000+ servings of fruits and vegetable to 5,400 students at 27 schools in 2025
- **Buying with purpose** supports shifting purchasing towards food that is local, fair, sustainable, nutritious, equitable, and culturally relevant
- *Staff Sweetened Beverage Tax Community Advisory Board, which makes recommendations about SBT-funded programs and services*



HC Grocery in Seattle's Beacon Hill neighborhood. Owner Anna Chen showing her yu choy mieu produce, a delicate leafy green essential to Chinese cuisine.



Increasing Food Access and Sustainability

These deep partnerships and relationships were critical when response mobilized to provide food boxes to families when SNAP benefits were paused during the government shutdown.

8,800 food boxes were distributed to families at 98 SPS sites over three weeks.



*"The boxes met the needs for our families during an uncertain time. Also – we had an amazing group of parent volunteers distributing the boxes."
-SPS Principal*

Growing and Stewarding Seattle's Trees



- OSE leads Citywide coordination, data, and reporting, including a **Canopy Cover Assessment** every five years and coordination and implementation of the **Urban Forest Management Plan**.
- Advancing **Tree Equity** to grow and maintain urban forest in neighborhoods that need it most
- Launched **Foreesting Seattle** Initiative focused on community-based approaches to closing canopy equity gaps in C-ID and Beacon Hill
- *Staff the Urban Forestry Commission, who makes recommendations on policy & programs issues related to trees in Seattle*



Kick off meeting with Neighborhood Team in the C-ID brainstorming tree equity solutions together

Building on Progress: 2026 Priorities



2026 Key Priorities:

1. Expand Access to Healthy & Affordable Food and Build a Sustainable Food System

- **Connect City & school food buyers with values-aligned suppliers** through Buying with Purpose guide and technical assistance.
- **Provide Fresh Bucks benefits to 17,000 households**, boosting sales for small retailers and increasing access to fresh produce.
- **Engage on grocery access & stabilization policy** with OPCD & OED.
- **Engage in state and federal policy** to support food security, grocery access, and universal meals with OIR.

2. Close Tree Canopy Gaps in Priority Neighborhoods

- **Release Seattle's Tree Equity Plan** identifying priority neighborhoods experiencing disparities in tree canopy cover and impacts of high heat and air pollution and engaging with communities to identify solutions.
- **Collaborate with communities** in the Duwamish Valley, Chinatown-International District, and Beacon Hill to plant and steward trees in areas with the least amount of existing canopy.



2026 Key Priorities Pt 2:

3. Advance an Equitable Clean Energy Transition off Fossil Fuels

- **Expand Clean Heat rebates, education, and outreach** to help Seattle residents transition off oil heat and onto electric heat pumps in their homes.
- **Launch new customer support and technical assistance program** to help building owners meet the new 2027 Building Emissions Performance Standard target.
- **Grow an inclusive climate workforce** through investments in clean energy training programs, intern partnerships with South Seattle College, and piloting of a new Climate Fellows program.



2026 Key Priorities Pt 3:

4. Invest in Seattle's Climate and Environmental Leaders

- **Call for proposals** for the Environmental Justice Fund and BEPS Building Navigator to fund community-driven solutions to the climate crisis.
- **Launch the First People's Climate Fund in partnership with The Seattle Foundation** to support Tribal sovereignty and traditional ecological knowledge in Seattle's climate action.
- **Continued support for youth led climate programs** like the Duwamish Valley Youth Corps and other green jobs programs.

5. Advance Leading Edge Citywide Climate Action while Measuring Impact

- Publish Seattle's bi-annual Greenhouse Gas Inventory showing progress toward reducing emissions across buildings, transportation, and waste sectors.
- **Develop and release Seattle's Climate Action Plan Update, paired with systems and recommendations for monitoring and tracking progress.**



Seattle
CLIMATE
ACTION
PLAN

Stay Up-to-Date by Following OSE

- Blog: www.Greenspace.seattle.gov
- Socials @SeattleOSE



Greenspace

Office of Sustainability & Environment



How the Seattle Aquarium is Reducing Fossil Fuels and Keeping Thousands of Aquatic Animals Happy and Healthy

December 1, 2025

The Seattle Aquarium knows firsthand that climate change, which brings warmer waters, more acidic oceans, habitat destruction, and much more, threatens our marine environments. OSE is working hard to reduce pollution from City-owned buildings by swapping fossil-fuel appliances for clean energy alternatives, and also supporting other large buildings across Seattle.... [[Keep reading](#)]

Filed Under: [Climate Action](#), [Greenspace](#)
Tagged With: [Building Emissions](#), [Clean Energy](#), [Climate Change](#), [Greenhouse Gas \(GHG\) Emissions](#)



Coming Together to Support Students and Neighbors During the Government Shutdown

November 26, 2025

Over 8,800 food boxes distributed to families at 98 Seattle Public Schools sites When federal funding for the Supplemental Nutrition Assistance Program (SNAP) abruptly lapsed on Nov. 1 due to the Trump administration's refusal to release dollars from SNAP's contingency fund during the partial government shutdown, tens of thousands of... [[Keep reading](#)]

Filed Under: [Greenspace](#)
Tagged With: [Food Access and Security](#), [Locally Sourced Food](#), [Seattle Public Schools \(SPS\)](#)



The Hidden Risks Beneath Your Yard: How retiring your oil heating tank and transitioning to electric heat protects our homes, water, and climate

November 5, 2025

As the crisp fall weather settles in, households with oil heating are making plans to refill their oil tanks. While burning oil was once a common way to heat homes, aging tanks present serious risks to health and safety, property value, and neighborhood water resources. Burning fossil fuels like oil... [[Keep reading](#)]

Filed Under: [Greenspace](#)



Possible Delay in November SNAP Benefits Due to Federal Government Shutdown

October 29, 2025

Updates Friday, October 31, 2025, 5 p.m. — The City of Seattle launched the Seattle and King County Emergency Food Resources webpage for the most up-to-date information (this blog is not live updated). The search tool provides information on the nearest food banks and meal programs based on your address.... [[Keep reading](#)]

Filed Under: [Food Policies and Programs](#), [Greenspace](#)
Tagged With: [Food Access and Security](#), [Seattle Public Schools \(SPS\)](#)



Seattle
Office of Sustainability
& Environment

Contacts:

Lylianna Allala

Lylianna.Allala@Seattle.gov

Website: www.seattle.gov/environment

Blog: Greenspace.seattle.gov



Seattle
Office of Sustainability
& Environment

Climate Action Plan Update

Lylianna Allala (she/her/ella), Acting Director, OSE
Narita Ghumman (she/her), Climate Action Plan Project Manager
OSE



Seattle
Office of Sustainability
& Environment

Seattle
**CLIMATE
ACTION
PLAN**

What We'll Cover Today

1. The CAP Update: Purpose & Goals
2. Timeline and Engagement Overview
3. Next Steps & Timeline

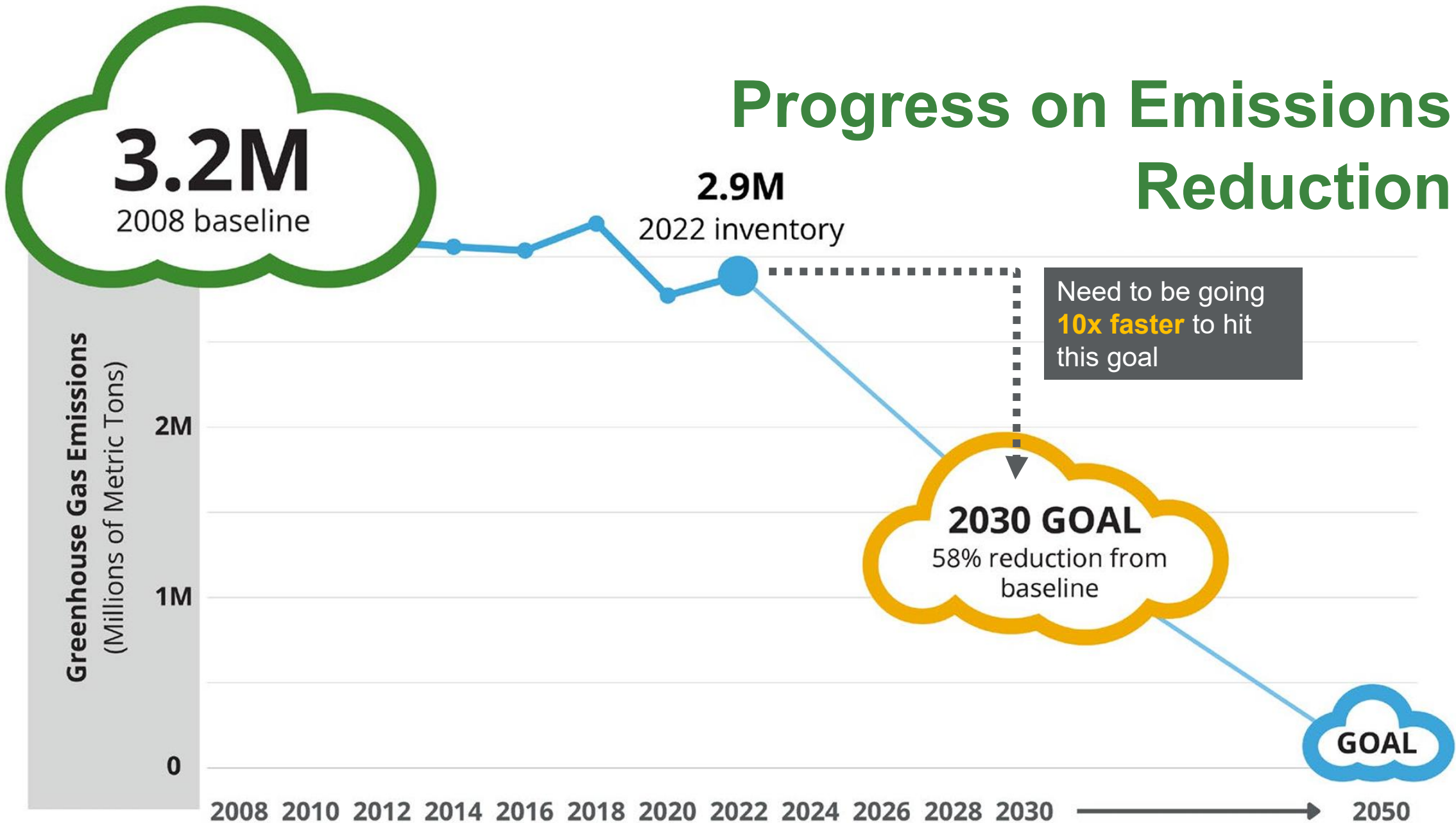
CAP Deliverables

2013 CAP Progress Report

Seattle Climate Action Plan

Tracking Framework

Progress on Emissions Reduction



Note: Greenhouse gas emissions are measured in Metric Tons or Megagrams of CO₂e (carbon dioxide equivalent).

CAP Update: Goals



Protect the health and safety of all Seattle communities

Strengthen natural systems and community resilience

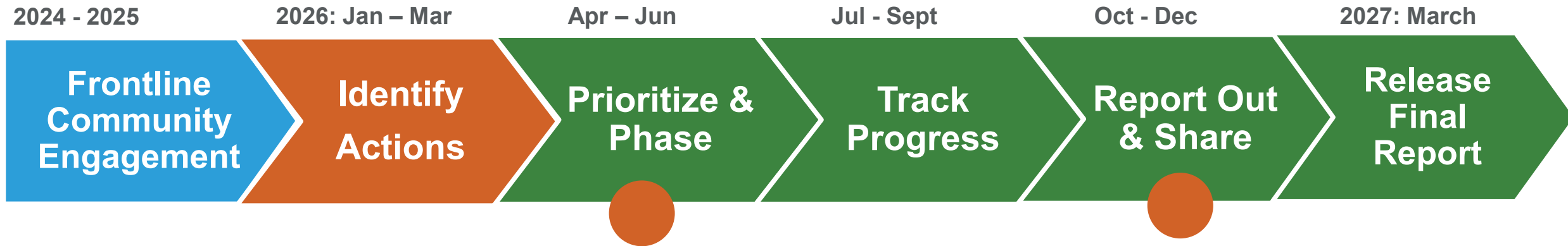
Make our homes, transportation, and energy cleaner and more affordable


Build an inclusive green economy

Integrate climate accountability across City government



CAP Update Timeline





 Public engagement opportunities

Climate Community Assemblies

Partner-led forums centering frontline voices. Community Assemblies began in 2024 and **completed in 2025.**

What we're hearing:

-  **Community Leadership:** To lead decisions and share power through community-driven policies, investments, and governance.
-  **Climate and Everyday Realities:** Climate is not viewed in isolation, it connects directly to housing, stability, public health, food access, and economic displacement.
-  **Climate-Ready Labor and Workforce Equity:** Ensuring frontline workers are protected and prioritized in the shift to a green economy.
-  **Resilience Infrastructure and Community Protection:** Investing in place-based infrastructure and systems that protect communities during extreme weather.



CAP City Work Group

Engaging **18 departments** to align efforts and drive coordinated progress. The Work Group **launched in December 2025 and convenes monthly.**

Emerging Themes:

- Advance **community-centered planning** and **build local capacity** while strengthening partnerships with community based organizations
- Strengthen **preparedness and resilience efforts** to protect health and safety from extreme weather
- Create a coordinated strategy to **reduce GHG emissions** across key sectors (i.e.: food waste prevention, building decarbonization and transportation electrification)
- **Bundle City resources** for greater impact (i.e.: improve housing and utility affordability)

Director's Forum

Convene Department Directors at key milestones to gather insights, creativity, and good ideas. **Meetings will begin this May.**

- Foster collaboration across departments
- Build alignment and buy-in for bold climate actions
- Advance and endorse cross-department solutions



Seattle Regional Partners Forum

Bring together local and regional partners to coordinate on climate priorities and advance collaborative solutions.
Regional partners will meet twice: in June and August.

- **Business & Industry:** Seattle Chamber of Commerce, Microsoft
- **Labor:** MLK Labor, IBEW Local 46
- **Healthcare & Public Health:** Seattle King County Public Health, Providence, Community Health Worker Coalition for Migrants and Refugees
- **Non-profit Organizations:** Duwamish River Community Coalition, Climate Solutions, Smart Buildings Center
- **Philanthropy:** Seattle Foundation, Satterberg Foundation
- **Academic Institutions:** University of Washington
- **Tribal & Indigenous Partners:** United Tribes of All Indians, Feed 7 Generations
- **Govt & Regional Partners:** Department of Natural Resources and Parks, Port of Seattle, Sound Transit, Puget Sound Clean Air Agency

CAP Survey – Just Released!

Multi-month survey to get feedback from residents to inform the Climate Action Plan.

- Running online ads to reach targeted audiences prioritizing environmental justice communities.
- Will be translating promotional materials and working on an in-language strategy.
- OSE is working with other departments to share out the survey and encourage broad participation.

**Help create Seattle's
Climate Action Plan.
Take our survey.**

Seattle
**CLIMATE
ACTION
PLAN**



Seattle
Office of Sustainability
& Environment

Seattle
**CLIMATE
ACTION
PLAN**

Thank you!

Lylianna Allala, Acting Director, OSE
Narita Ghumman, CAP Project Manager, OSE

Seattle
**CLIMATE
ACTION
PLAN**

